



Shenzhen Wonderful Digital Technology CCIPTU Smart Wifi Camera 2MP Pan/Tilt User Manual

[Home](#) » [Shenzhen Wonderful Digital Technology](#) » Shenzhen Wonderful Digital Technology CCIPTU Smart Wifi Camera 2MP Pan/Tilt User Manual 



SHENZHEN

Smart Wifi Camera 2MP Pan/Tilt User Manual

Please read the instruction manual carefully before using the product

Thank you for purchasing a Smart Camera. Get started using your new devices by downloading TuyaSmart, one convenient app that manages everything straight from your phone. Easily connect to your home Wi-Fi and control multiple devices from the touch of your fingertips

Contents

- [1 What's in the Box](#)
- [2 Get Ready](#)
- [3 Frequently Asked Questions](#)
- [4 System Requirements](#)
- [5 Technical Specifications](#)
- [6 Documents / Resources](#)
- [7 Related Posts](#)

What's in the Box

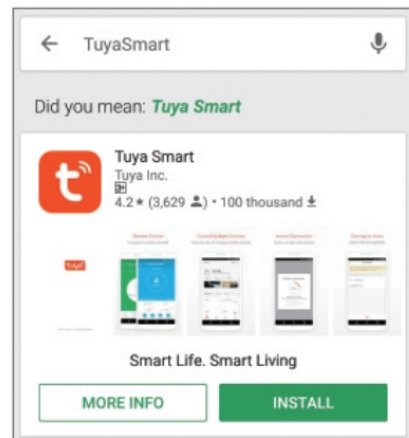
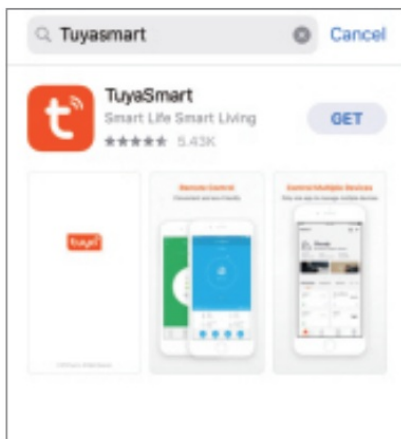
- Smart Camera x1
- USB Cable x1
- User Manual x1

- Mounting Bracket x1 ‘
- Adapter x1
- Screw bag x1
- *: Different products have different accessories, please refer to physical packing.

Get Ready

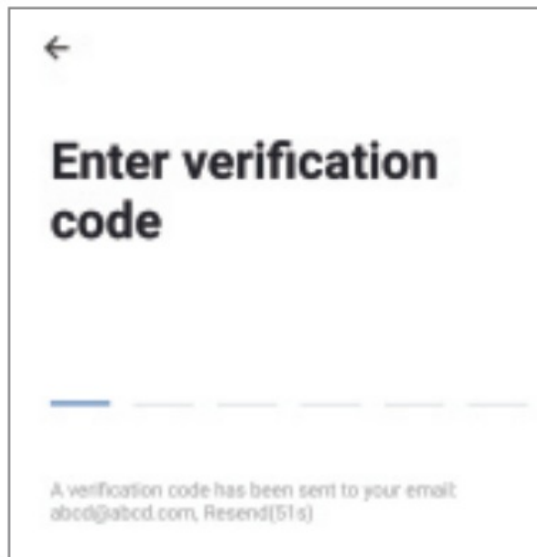
- Know your WI-Fi network and password
- Make sure your mobile device is running iOS 9 or higher or Android™ 4.1 x or higher
- Make sure you're connecting to a 2.4GHz Wi-Fi network (It can't connect to 5GHz networks)

1. Download the TuyaSmart app from App Store or Google Play.



2. Register an account on your TuyaSmart app

STEP 1. Enter your mobile phone number or email address.



STEP 2. Enter the verification code and create a password.

3 Plug in

How do I reset my device?

use the middle long-press Reset key for 5 seconds, then wait about 20 seconds for restart. Then the camera will auto-check for 30 seconds, then inform you " wait for wifi connection "

Product details

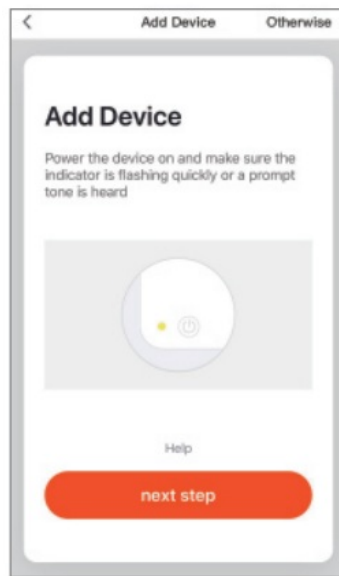


Long press reset for 5s to reset

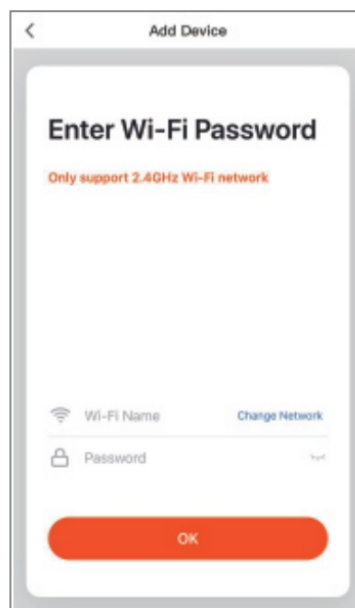


4 Add device

Open Tuya smart APP, click "+" on the right corner of the Home page, then select "Security & Video surveillance ", then "Smart Camera ". Then choose " Make sure the indicator is flashing quickly or a prompt tone is heard, then click "Next"



Enter your “Wi-Fi network and password”, click “OK”.



4 Add device

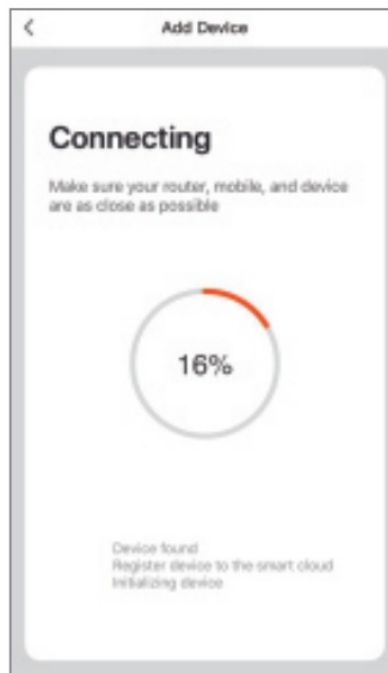
Read the instruction about “Scan with the camera”, click “Continue”.



Scan the QR Code on your phone with a camera. Heard a prompt tone, click “Heard the beep”.



When the indicator light on the device turns from flashing red light to steady green light, the network configuration is complete.



‘Please refer to the specific APP Interface if there are any differences.

Frequently Asked Questions

1. Can I then with family and friends?

Yes, you can share your cameras with family and friends who will have access to view the camera and control your bulbs, plugs, and other devices. In the app, press the Profile button and click on the ‘Home Management’ button, and you will be able to give or revoke sharing permissions. In order to share, the other user should already have downloaded the app and registered a new account.

2. What’s the Wireless Range?

The range of your home Wi-Fi is heavily dependent on your home router and the conditions of the room. Check with your router specifications for exact range data.

3. The device appears offline or unreachable?

Make sure your 1M-Fi muter is online and ti range. Make sure you have the latest app functionality by clicking 'Check for firmware update" in your device settings.

4. Cannot connect to your Wi-Fi network.

Make sure you entered die correct wi-Fi password during the Wi-F1 setup, check whether there are any Internet connection problems. Il the 1M-Fi signal ks too weak. reset yaw IM-F1 router and by again.

5. How many cameras can I control?

TuyaSmart app can control an unlimited amount of devices online. ed amount of locals. Yow router may have a limit of how many devices can be connected to one router.

System Requirements

- Mobile device running CS' 8 or higher or Arrirod '4.1x or
- Existing Wi-FiNetaork

Technical Specifications

- Audio. Internal Speaker and microphone
- Storage: %Worts up to 1286 Mao SD card (not included)
- IEEE 802.11b/g/n. 2.4Glinot compatible with 56Hz Wi-Fi networks)


This device complies with Part 15 of the FCC Rules. Operation is subject to the following two conditions: (1) this device may not cause harmful interference, and (2) this device must accept any interference received, including interference that may cause undesired operation

NOTE: This equipment has been tested and found to comply with the limits for a Class B digital device, pursuant to Part 15 of the FCC Rules. These limits are designed to provide reasonable protection against harmful interference in a residential installation. This equipment generates, uses, and can radiate radio frequency energy and, if not installed and used in accordance with the instructions, may cause harmful interference to radio communications. However, there is no guarantee that interference will not occur in a particular installation. If this equipment does cause harmful interference to radio or television reception, which can be determined by turning the equipment off and on, the user is encouraged to try to correct the interference by one or more of the following measures:

- Reorient or relocate the receiving antenna.
- Increase the separation between the equipment and receiver.
- Connect the equipment into an outlet on a circuit different from that to which the receiver is connected.
- Consult the dealer or an experienced radio/TV technician for help.

Warning: Changes or modifications not expressly approved by the party responsible for compliance could void the user's authority to operate the equipment

Documents / Resources

	Shenzhen Wonderful Digital Technology CCIPTU Smart Wifi Camera 2MP Pan/Tilt [pdf] Us er Manual K1, 2ARU5-K1, 2ARU5K1, CCIPTU, Smart Wifi Camera 2MP Pan Tilt, CCIPTU Smart Wifi Ca mera 2MP Pan Tilt
---	---