



Shenzhen Verto Technology C6S WiFi Smart Camera Instruction Manual

[Home](#) » [Shenzhen Verto Technology](#) » Shenzhen Verto Technology C6S WiFi Smart Camera Instruction Manual



Contents

- [1 Shenzhen Verto Technology C6S WiFi Smart Camera](#)
- [2 Instruction](#)
- [3 AP quick configuration](#)
- [4 Documents / Resources](#)
- [5 Related Posts](#)

Shenzhen

Shenzhen Verto Technology C6S WiFi Smart Camera

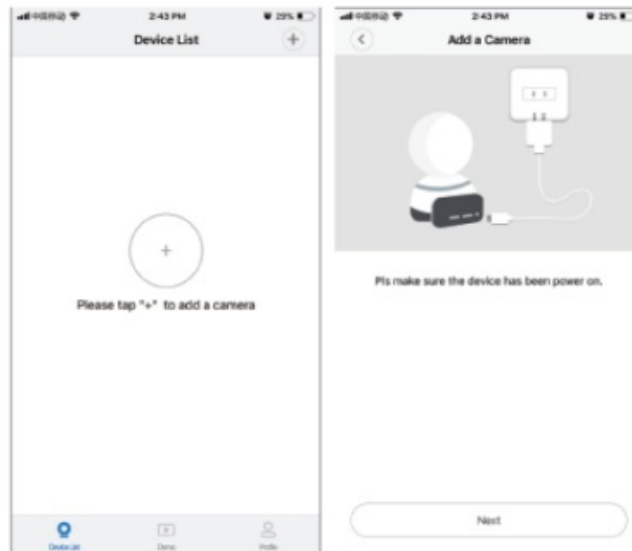


Instruction

When you unbox the device, your first step should be to use the included AC adapter and Micro-USB cable to plug your V380 camera in, and follow these steps to complete your setup Note: The camera requires a SD card to store video recordings, accessories do NOT include any SD cards, please purchase one separately. Getting started Scan the below QR code with mobile phone to download “V380 Pro” , besides, it’s available to install v380 Pro through Google Play Store or App Store.

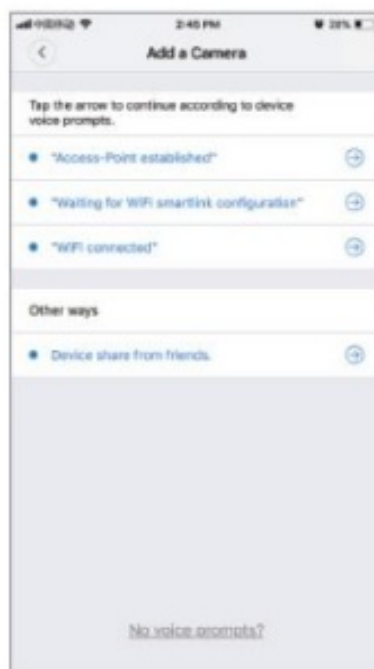


Once the camera is power on, follow the steps below to complete the setup: 1. Tap “+” and then tap ” Next



2. Wait until you hear “Access-Point established” or “Waiting for Wifi smartlink configuration” now you can start connecting the camera to Wi-Fi.

•



If you hear the camera voice prompt “Access-Point established”, choose method A or B to configure the camera.

- 4.If you hear the camera voice prompt “Waiting for WiFi smartlink configuration”, choose method C to configure the camera.

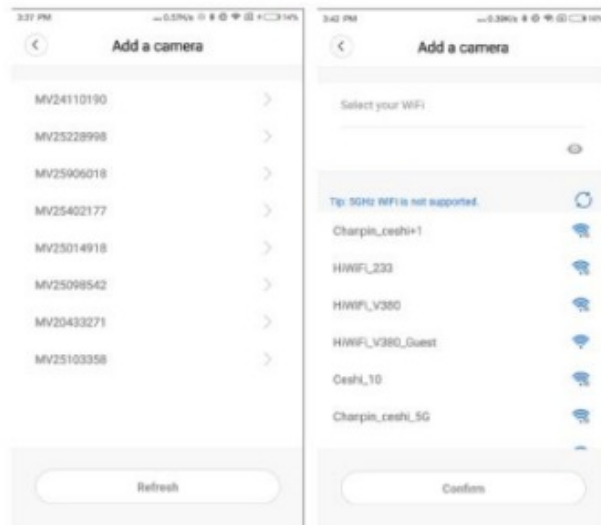
AP quick configuration

Android:

- Tap “Access-Point established”, MV+ID will be shown, tap it to proceed.
- Choose your Wi-Fi network, enter the password, tap “Confirm”, and the camera will start

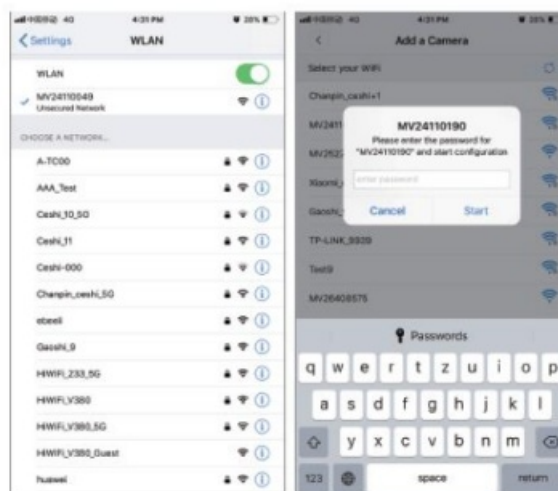
connecting Wi-Fi.

- Once you hear the camera voice prompt “Wifi connected” , it will be shown on device list.
- The last step for setting up your camera is to set a password for the camera.



iOS:

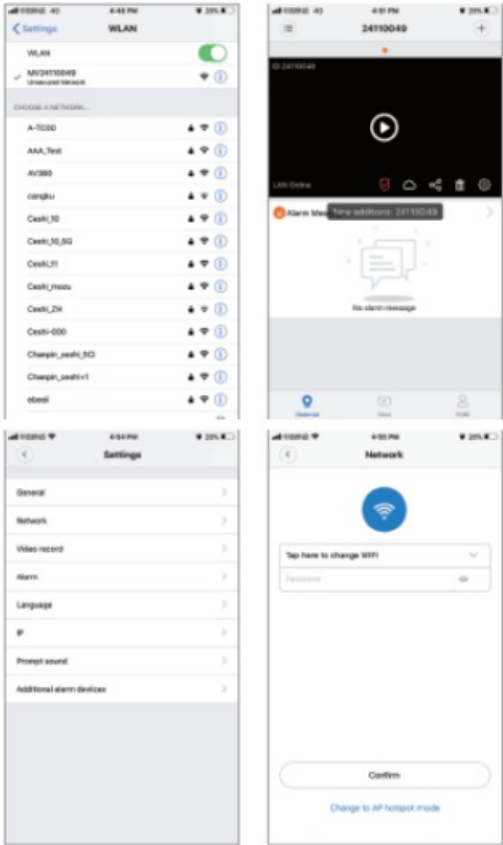
- Tap “Access-Point established”, go to your Phone settings, tap Wi-Fi” and connect “MV+ID”
 - Wait for the status bar to display “wifi icon, and then return to the App, tap “Next”
 - Choose your Wi-Fi network, enter the password, tap “Confirm” , and the camera will start connecting Wi-Fi.
- Once you hear the camera voice prompt “Wifi connected” , it will be shown on device list.
- The last step for setting up your camera is to set a password for the camera.




AP Hot spot configuration

Go to your phone settings, tap “Wi-Fi” and connect “MV+1D” Wait for the status bar to display “wifi” icon, and then return to the App, pull down the device list, the device will be shown on the list. You are now able to view live stream on LAN, but in order to achieve remote view, you need to proceed the following steps: Tap “settings”network””change to wi-fi station mode”, then choose your Wi-Fi network, enter the password, tap

“confirm, and the camera will start connecting Wi-Fi. Once you hear the camera voice prompt “WiFi connected”, the camera is ready to use.



Documents / Resources

	<p>Shenzhen Verto Technology C6S WiFi Smart Camera [pdf] Instruction Manual C6S, 2AYGI-C6S, 2AYGIC6S, C6S WiFi Smart Camera, WiFi Smart Camera</p>
---	--