



Shenzhen Ustellar Technology NTF77 Smart LED Flood Light User Manual

[Home](#) » [Shenzhen Ustellar Technology](#) » Shenzhen Ustellar Technology NTF77 Smart LED Flood Light User Manual 

Contents

- [1 Shenzhen Ustellar Technology NTF77 Smart LED Flood Light](#)
- [2 Instructions](#)
- [3 Limitation of Indoor and Outdoor Use](#)
- [4 Part Two – How to pair the light to Smart Life app?](#)
- [5 Documents / Resources](#)
- [6 Related Posts](#)



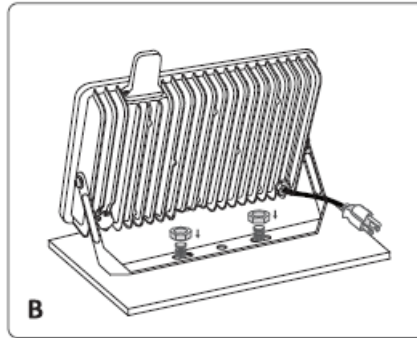
SHENZHEN

Shenzhen Ustellar Technology NTF77 Smart LED Flood Light

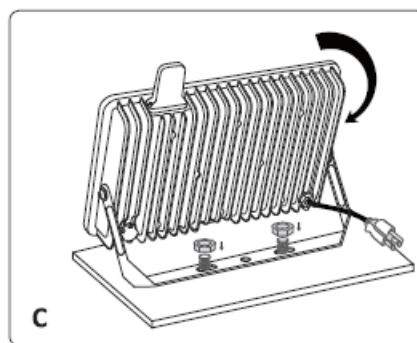


Instructions

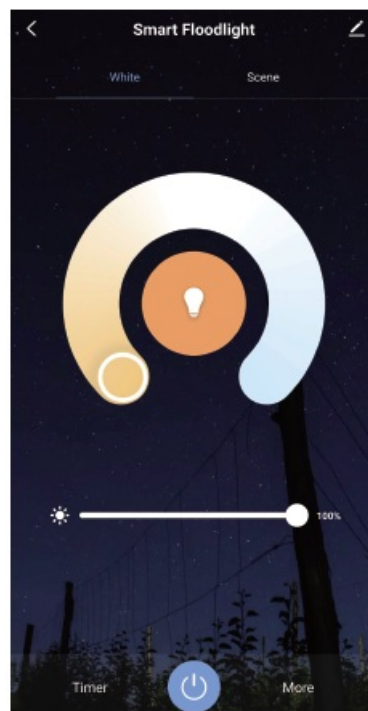
- Step A: Aim the bracket at the holes and fix it with two bolts.



- Step B: Adjust the lighting direction up or down as per your need and plug in to power the light on.

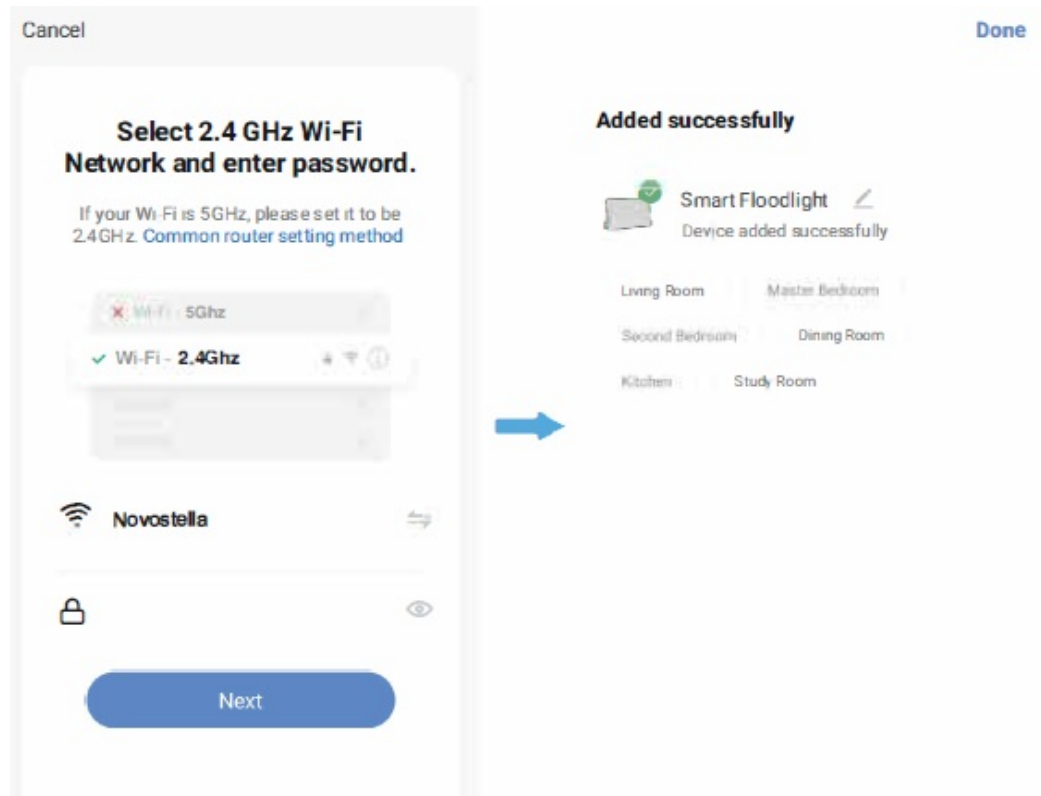


- Step C: Give a name to the light.
 - A simple name is recommended for easier voice recognition with Alexa or Google Assistant.
 - The name given to the light will be the same for voice control on Alexa or Google Assistant.
- Step D: The named light will be shown on the app homepage. Now you can control the light(turn on/off, change color temperature, adjust brightness ect) with Smart Life on the setting page.

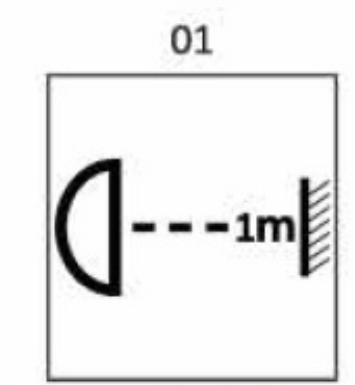


Choose you WiFi network, enter your password, and tap the 'Next' button. Then give a name to the light and tap

the 'Done' button.



Note: Make sure that the distance between the light and the object being lit is more than 1 meter, so as to avoid high temperature caused by short distance.



The light source of this luminaire is not replaceable.

Limitation of Indoor and Outdoor Use

FCC ID: 2AWONNTF77

This device complies with part 15 of the FCC rules. Operation is subject to the following two conditions: (1) this device may not cause harmful interference, and (2) this device must accept any interference received, including interference that may cause undesired operation.

This equipment complies with FCC radiation exposure limits set forth for an uncontrolled environment. This transmitter must not be co-located or operating in conjunction with any other antenna or transmitter.

- Reorient or relocate the receiving antenna.
- Increase the separation between the equipment and receiver.
- Connect the equipment into an outlet on a circuit different from that to which the receiver is connected.
- Consult the dealer or an experienced radio/TV technician for help.

Caution: Any changes or modifications to this device not explicitly approved by manufacturer could void your authority to operate this equipment.

This device complies with part 15 of the FCC Rules. Operation is subject to the following two conditions: (1) This device may not cause harmful interference, and (2) this device must accept any interference received, including interference that may cause undesired operation.

RF Exposure Information

This equipment complies with FCC radiation exposure limits set forth for an uncontrolled environment. This equipment should be installed and operated with minimum distance 20cm between the radiator and your body.

Part Two – How to pair the light to Smart Life app?

Before starting the pairing, please make sure to turn on the Bluetooth and WiFi on your phone.

The smart light only supports 2.4GHz WiFi network, not 5.0GHz. Please make sure your working network is 2.4GHz, and your phone is connected to it. If your WiFi router supports both 2.4GHz and 5.0GHz, please separate the two frequency bands in the router settings, and select the 2.4GHz for connection.

• Step A: Smart Life app installation

Please choose either way below to download and install the app.

- As per your phone system, choose the QR code to scan.



iOS



Android

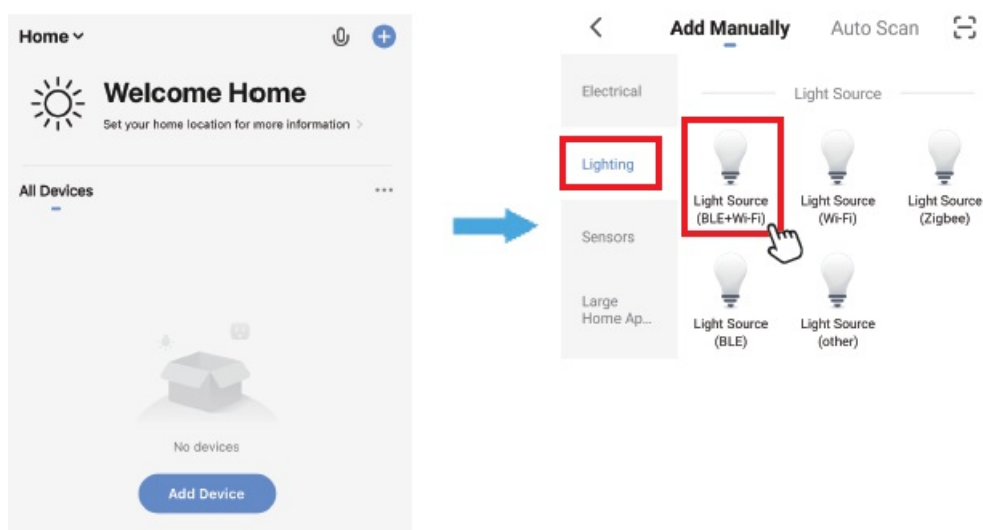
- Search keyword 'Smart Life' in Apple Store or Google Play.

• Step B: Create an account on Smart Life and login.

Note: Please keep your account and password in mind for Alexa or Google Assistant App pairing later.

• Step C : Add the light to Smart Life App

- Tap '+' button on top right corner to add devices. Tap 'Lighting', then choose 'PIR Light (BLE+Wi-Fi)' to add the lights.



- Power on the light with your own switch. Repeatedly turn on-off-on-off-on-off-on switch (3 times) to activate the light into rapid blinking status (about 0.5s per blink). Please make sure to keep an interval over 2 seconds between each turn-on and turn-off. Then click the 'Next' button on this page. Find the

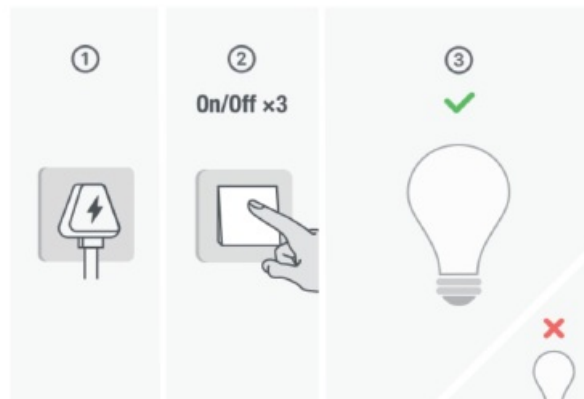
lighting devices and click '+'.

Reset the device first.

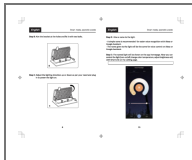
If the light is blinking rapidly, pls skip the reset step:

- ① Power on the device;
- ② Turn on-off-on-off-on (Subject to the user manual);
- ③ Ensure the light is blinking rapidly;

Note: please complete the network districution within 3 minutes after resetting the device.



Documents / Resources



[Shenzhen Ustellar Technology NTF77 Smart LED Flood Light](#) [pdf] User Manual
NTF77, 2AWONNTF77, NTF77 Smart LED Flood Light, NTF78, Smart LED Flood Light