



Shenzhen Unisheen Technology HEVC H.265 MPGE4 FHD Video/Audio Live Encoder Instruction Manual

[Home](#) » [Shenzhen Unisheen Technology](#) » Shenzhen Unisheen Technology HEVC H.265 MPGE4 FHD Video/Audio Live Encoder Instruction Manual 

Contents

- [1 Shenzhen Unisheen Technology HEVC H.265 MPGE4 FHD Video/Audio Live Encoder](#)
- [2 Interface](#)
- [3 Specification](#)
- [4 System Setting](#)
 - [4.1 Main Stream Encoding Setting](#)
- [5 System Settings](#)
- [6 FCC Statement](#)
- [7 Documents / Resources](#)
- [8 Related Posts](#)

SHENZHEN

Shenzhen Unisheen Technology HEVC H.265 MPGE4 FHD Video/Audio Live Encoder



Interface



Power: DC 9-12V 1A

ANT: HG WIFI

HDMI IN: HDMI Video Input Port Power: Power Light(Red)

Reset: Recovery to Default setting LAN: Lan Status Light(Green)

LAN: 1000M Ethernet Port Video: Video Signal Light(Blue)

WIFI: it is AP when it is blink,it is connected it is always bright.

Instructions:

A. Power —9-12 V/DC 1A;

B. Reset— it is used to reset the equipment; after the equipment is started, press the button for 10 seconds, the equipment IP is recovery to the default IP, 192.168.1.168.

C. Video input — it is used to input high-definition HDMI

D. LAN — 100M or 1000M Ethernet connection.

Specification

Input

Video	1.4 HDMI HDCP
HDMI resolution ratio	1920x1200_60P,1920x1080_50/60P,1920x1080_50/60i, 1280x720_50/60p 720x576i/p 720x480i/p.
Encoding	H.265 HEVC or H.264 AVC Profile 4.2
Bitrate	16kbit/s 32Mbit/s

Bitrate control	CBR/VBR
GOP	Adjustable

Audio:

Encoding	AAC AAC+ AAC++ MP3 MP2 AC3 G.711A/U
Re-Sampling rate	44100/48000
Bitrate	48K 64K 96K 128K 160K 192K 256K
Sampling precision	24 bit
Bitrate	64Kb/s~384Kb/s

System:

Network	100M/1000M Base-T Ethernet /WIFI 2.4G
Stream	UTP,HTTP,FLV,HLS,RTSP,RTMP RTP UDP(Multicast,Unicast) and ONVIF
Configuration interface	WEB operation interface or CGI Command
Updating	Software update

General

Size	89*103*29mm
Net Weight	0.3KG
Temperature range	-20~55°C(workable)
Power supply	9-12V/1A or 5V/2A
Power consumption	5W

System Setting

Reset

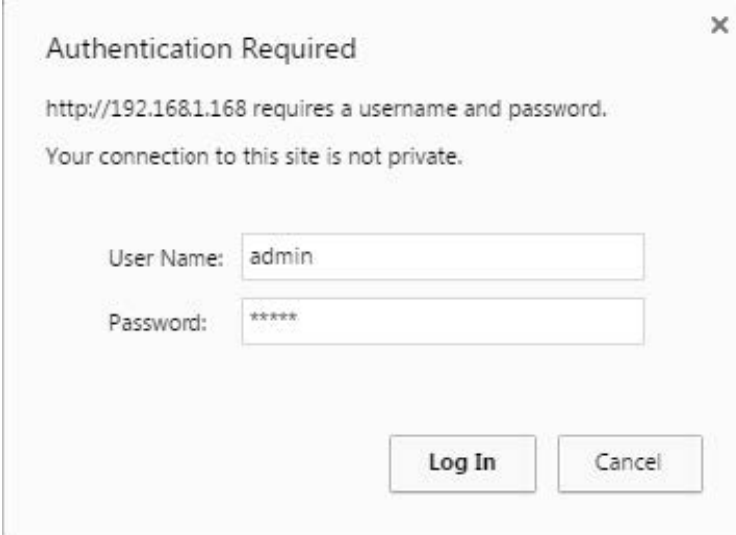
there is a RST hole on the front panel which is used to conduct initialization reset for the high-definition encoder. When the equipment is powered on, press the button and hold for 12 Seconds, when the power light is off, release the button, and all the parameters will be initialized. The initialized IP is 192.168.1.168.

Computer IP Address Setting

Computer IP can be set as 192.168.1.*. Note: anyone from 1 254, except for 168

Open IE Explorer

Fill http://192.168.1.168 to address bar, Default user name: admin Pass: admin



Status Display

status: when there is video input, it will display resolution of the input, and if there is not status info, input is not correct, please check your video source or video cable.

Status

Running Time: 0000-00-00 00:05:49
Device Time: 2018-03-23 06:28:11(Sync Time To Device)
CPU Usage: 22%
Memory Usage: 16.8M/89.1M
Input Size: 1920x1080p@60
Collected Video Frames: 20890
Lost Video Frames: 2
Audio Samplerate: 48000
Collected Audio Frames: 16328
Net Packet Sent: 17
Net Packet Dropped: 0

mainstream: it shows main Stream Encoding Type, Resolution, Bitrate and access address.

Main Stream

Encoding Type: H.264
Encoded Size: 1920x1080@30
Bitrate(kbit): 2800
TS URL: http://192.168.1.168/0.ts
HLS URL: http://192.168.1.168/0.m3u8
FLV URL: http://192.168.1.168/0.flv
RTSP URL: rtsp://192.168.1.168/0
RTMP URL: Disable
RTMP PUSH URL(Not Connected): rtmp://192.168.1.50/live/0
Multicast URL: udp://@238.0.0.1:1234
[Preview----->Click](#)

Substream: it shows Sub-Stream Encode Type, Resolution Bitrate and access address.

Substream1

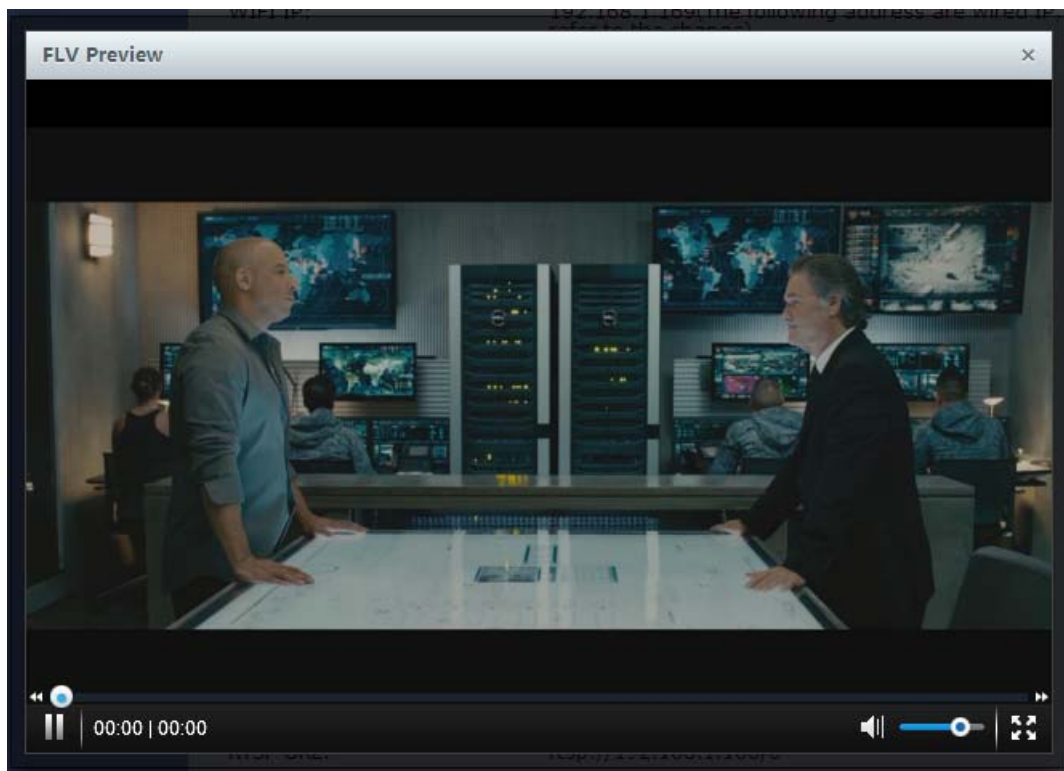
Encoding Type: H.264
Encoded Size: 1280x720@30
Bitrate(kbit): 1800
TS URL: http://192.168.1.168/1.ts
HLS URL: http://192.168.1.168/1.m3u8
FLV URL: http://192.168.1.168/1.flv
RTSP URL: rtsp://192.168.1.168/1
RTMP URL: rtmp://192.168.1.168/live/1
RTMP PUSH URL: Disable
Multicast URL: Disable
[Preview----->Click](#)

Preview:

1. Click Preview ,it will play stream in browser

Main Stream

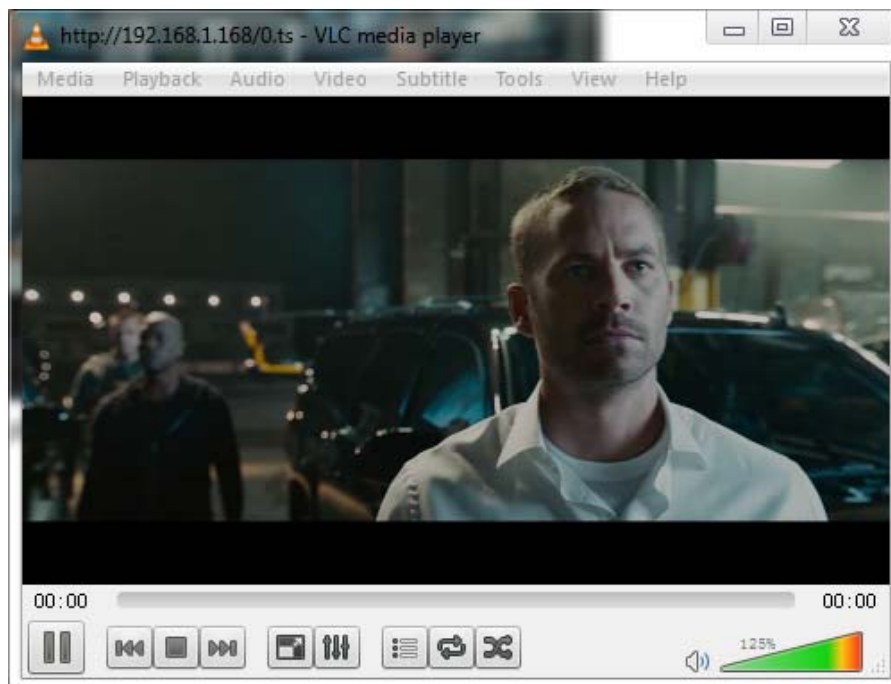
Encoding Type: H.264
Encoded Size: 1920x1080@30
Bitrate(kbit): 2800
TS URL: http://192.168.1.168/0.ts
HLS URL: http://192.168.1.168/0.m3u8
FLV URL: http://192.168.1.168/0.flv
RTSP URL: rtsp://192.168.1.168/0
RTMP URL: Disable
RTMP PUSH URL(Not Connected): rtmp://192.168.1.50/live/0
Multicast URL: udp://@238.0.0.1:1234
[Preview----->Click](#)



2. open VLC software to play stream

default http stream address: <http://192.168.1.168/0.ts>

default rtsp stream address: <rtsp://192.168.1.168/0>



Network Setting

Ethernet Port

Network

LAN

DHCP:

Disable ▾

IP:

192.168.1.168

Netmask:

255.255.255.0

Gateway:

192.168.1.1

MAC:

00:13:14:01:3A:4D

DNS

DNS1:

8.8.8.8

DNS2:

8.8.4.4

NTP

NTP Enable:

Disable ▾

NTP Server:

time.windows.com

Time Zone:

UTC+8 ▾

Port

HTTP Port:

8080

[1-65500]

RTSP Port:

8554

[1-65500]

Apply

Instructions: in terms of IP address of the equipment, the factory default is 192.168.1.168. If you forget the IP address after modification, you can reset the equipment by pressing the rest button for 12 seconds when the equipment is powered on, and restore the factory default ip.

WIFI/AP SETTING

AP Mode

WIFI

WIFI

Wifi:

Wifi mode:

AP

Wifi Essid:

Wifi password:

Wifi band:

Wifi channel:

AP Access Point mode is default wireless status.

Default AP name is AP_Encoder_XXXX,you can search hotspot on smartphone or laptop.Default pass is 12345678.

Wifi band supports 2.4G/5.8G

Wifi channel: if wireless transmit is jam,you can try to switch channel

WIFI Status

WIFI SSID: AP_Encoder_47752

WIFI IP: 192.168.8.8

WIFI MAC: 7C:A7:B0:35:5C:1C

You also can check ap information on status page.

WIFI Mode

WIFI

WIFI

Wifi:

Wifi mode:

WIFI Main Profile

Wifi List: [Refresh](#)

Wifi Essid:

Wifi password:

Wifi DHCP:

Wifi IP:

Wifi netmask:

Wifi gateway:

Select WIFI mode,you can click Refresh to scan hotspot after reboot. Fill correct hotspot name and pass and wifi ip.Click Apply botton,reboot You will check the connection information on status page.

WIFI Status

WIFI: COMPLETED

WIFI SSID: HUAWEI-040M0N_5G

WIFI IP: 192.168.0.168

WIFI MAC: 7C:A7:B0:35:5C:1C

WIFI Level: 71%

WIFI Freq: 5.745 GHz

WIFI Max Bit Rate: 270 Mb/s

If the wifi level is under 60%,please check environment,it is better to visual range away from router.

Main Stream Encoding Setting

Encoding Setting of Main Stream

Main stream

Encoding Type:
H.264

FPS:
30
[5-60]

GOP:
30
[5-300]

Bitrate(kbit):
2800
[32-32000]

Encoded Size:
same as the input

H.264 Level:
baseline profile

Bitrate Control:
cbr

TS URL:
/0.ts
Enable

HLS URL:
/0.m3u8
Disable

FLV URL:
/0.flv
Enable

RTSP URL:
/0
Enable

RTMP URL:
/0
Disable

RTMP/RTSP PUSH URL:
rtmp://192.168.1.50/live/0
Disable

Multicast IP:
238.0.0.1
Disable

Multicast Port:
1234
[1-65535]

Apply

1. Encoding Type: H.264 or H.265 or Mjpeg
2. Encode level: baseline profile / main profile / high profile
3. Encoding frame rate: 5-60 frames it can output 60p When Input is 60p)
4. Bitrate control: VBR(quality priority) and CBR(bandwidth Priority)
5. GOP: 30
6. Encoding size: 1920×1080, 1680×1050,1280×720, 1024×576,850×480,720×576, 720×540,720×480,720×404,704×576,640×480,640×360,608×488, 544×480,480×480,480×384,480×360,480×320,480×272,480×720,400×320, 400×224,352×480,352×228,320×256,320×240,320×180,240×180,176×144
7. Video bit rate: 16-32000K

Main Stream Protocol Setting

- UTP protocol(Private) ,Default address <http://192.168.1.168/0.utp>
- HTTP protocol,Default address <http://192.168.1.168/0.ts>
- HLS protocol,Default address <http://192.168.1.168/0.m3u8>
- FLV protocol,Default address <http://192.168.1.168/0.flv>
- RTSP protocol,Default address <rtsp://192.168.1.168/0>
- RTMP pull stream address: Default address <rtmp://192.168.1.168/live/0> default port :1935
- RTMP push stream address: <rtmp://ip:port/xxx/xxx> or <rtmp://user:pass@ip:port/xxx/xxx>

- RTMP default port: 1935
- A multicast protocol, Default address UDP://@238.0.0.1:1234
- Unicast protocol, Default address: UDP://@192.168.1.50:1234 (**Note:**192.168.1.50 is received device)

OSD Setting

Main stream	
Alpha:	<input type="text" value="100"/> [0-128]
Zone 1	
Zone:	<input type="text" value="Enable"/>
Type:	<input type="text" value="txt"/>
X:	<input type="text" value="10"/> [0-1920]
Y:	<input type="text" value="10"/> [0-1080]
Text:	<input type="text"/>
Font Size:	<input type="text" value="36"/> [8-72]
Background Color:	<input type="text" value="white"/>
Color:	<input type="text" value=""/> select color
Zone 2	
Zone:	<input type="text" value="Disable"/>
Zone 3	
Zone:	<input type="text" value="Disable"/>
Zone 4	
Zone:	<input type="text" value="Disable"/>
<input type="button" value="Apply"/>	

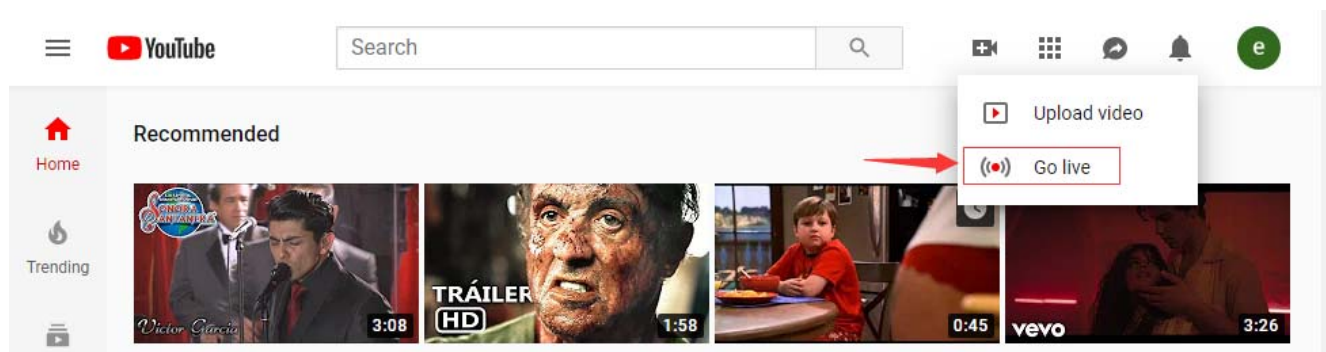
1. Zone 1-4, you can enable max to 4 image or txt Text, support English/number Character Image, support 24bit BMP file ,less than 500KB, transparency color is R:241
G:241 B:241
2. X coordinate: the left and right positions displayed by 0-1920 text. Y coordinate: the up and down positions displayed by 0-1080 text.
3. font: the size of 8-72 text display in the display screen.
4. Alpha: 0-128 , transparency
5. Logo: select logo files

Sub Stream Encoding Setting

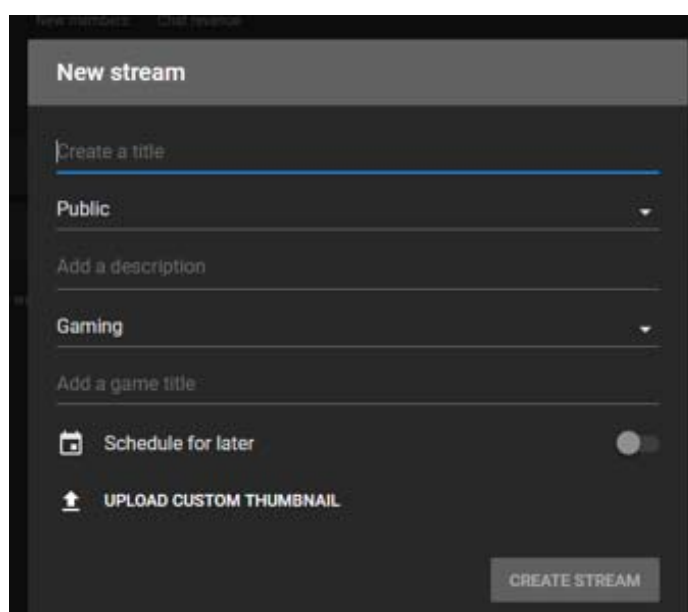
Note: the setting method is as same as that of main stream

Instructions for Youtube Streaming

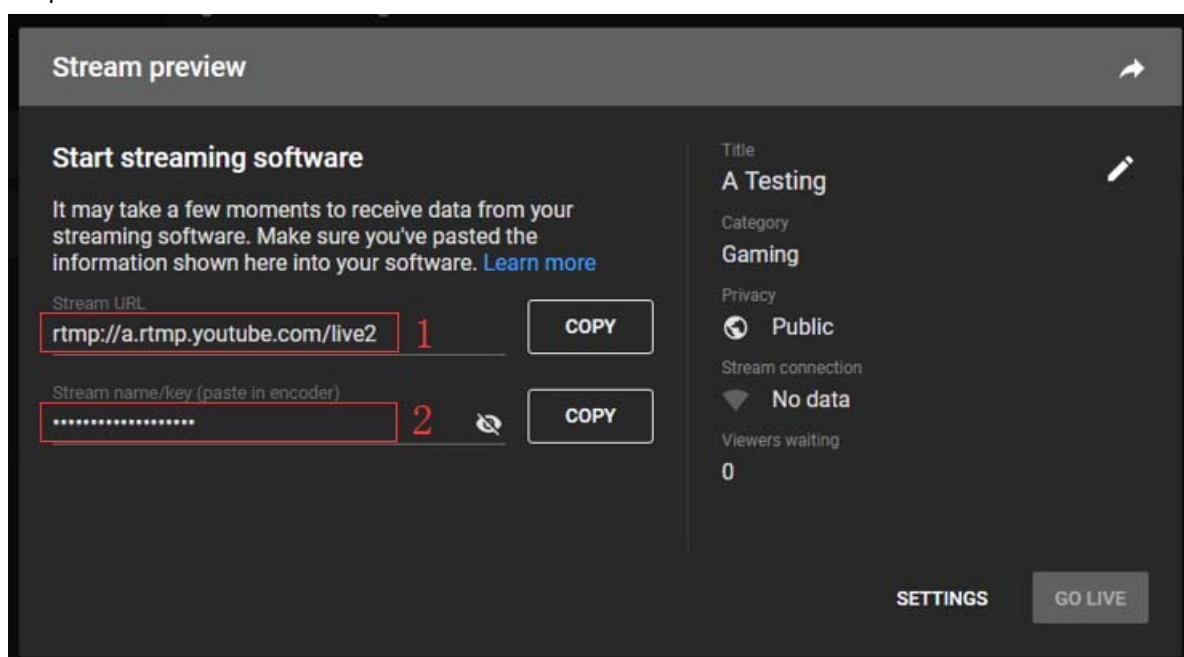
1. Open live streaming page on Youtube



2. Create a live stream channel



3. Copy rtmp address from Youtube



The whole address(part 1+part 2) is <rtmp://a.rtmp.youtube.com/live2/87gg-dtd0-7atc-8zwu>

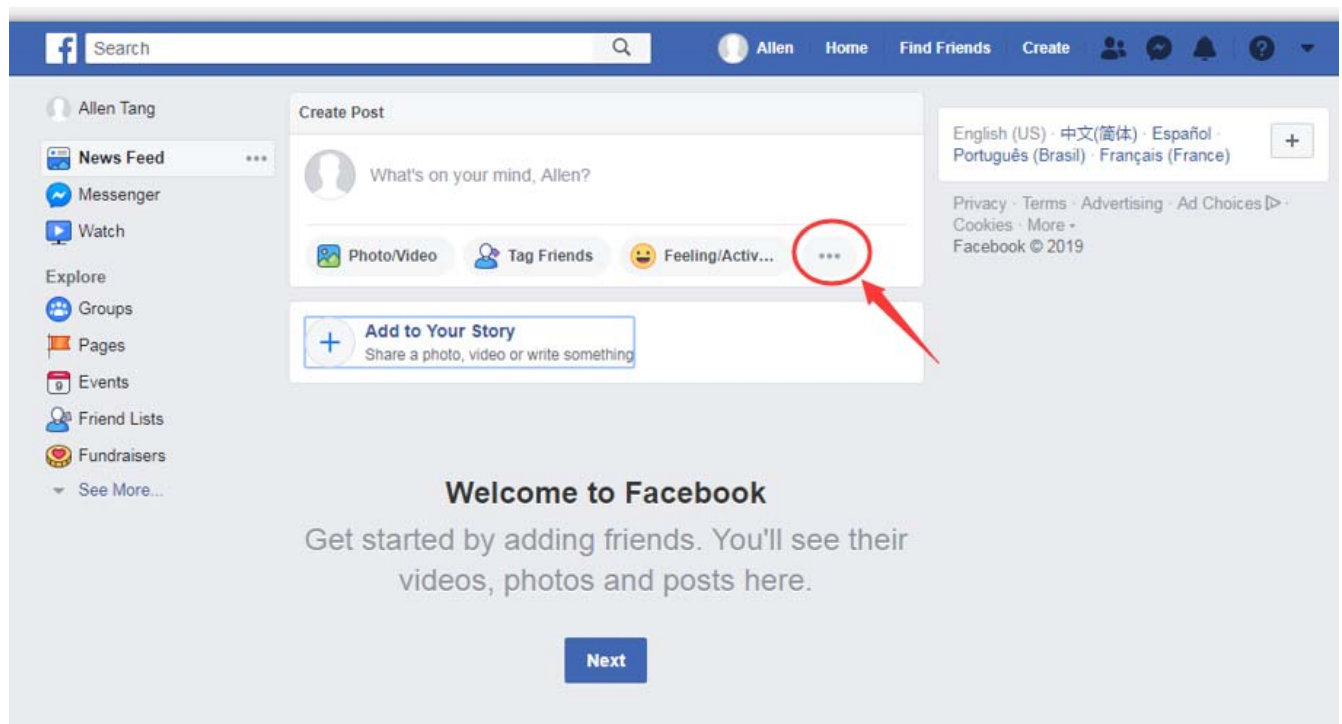
4. Paste whole rtmp address into encoder

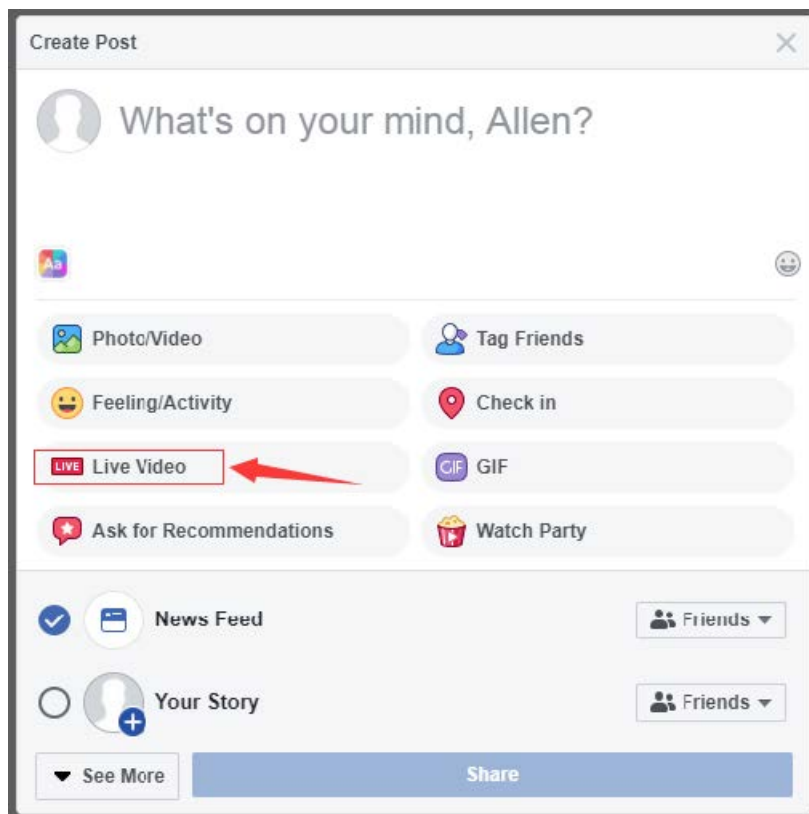
TS URL:	<input type="text" value="/0.ts"/>	Enable ▾
HLS URL:	<input type="text" value="/0.m3u8"/>	Disable ▾
FLV URL:	<input type="text" value="/0.flv"/>	Enable ▾
RTSP URL:	<input type="text" value="/0"/>	Enable ▾
RTMP URL:	<input type="text" value="/0"/>	Disable ▾
RTMP/RTSP PUSH URL:	<input type="text" value="rtmp://a.rtmp.youtube.com/live2/87gg-dtd0-7at"/>	Enable ▾
Multicast IP:	<input type="text" value="238.0.0.1"/>	Disable ▾
Multicast Port:	<input type="text" value="1234"/>	[1-65535]
<input type="button" value="Apply"/>		

Paste whole rtmp address Enable it Click Apply button

Instructions for Facebook Streaming

1. Open live streaming page on Youtube





2. Copy rtmp address from Facebook

Connect Your Live Stream to the Live API

Use live streaming software or a hardware encoder. [Learn more](#)

1. Choose where you want to post your broadcast on the right.
2. Preview your broadcast with a stream key or paired encoder.

☒ Stream Key ☐ Paired Encoder

Enter the information below into your software's settings.

☒ Use a secure connection (SSL) ⓘ

☐ Use a persistent stream key ⓘ

☐ Use a backup stream ⓘ

Server URL ⓘ

1

Stream Key ⓘ

2

3. Select Go Live in the bottom right corner.

The whole address(part 1+part 2) is [rtmps://live-api-s.facebook.com:443/rtmp/143998560119176?s_bi=1&.....DIGXA](rtmps://live-api-s.facebook.com:443/rtmp/143998560119176?s_bi=1&s_sml=0&s_sw=0&s_vt=api-s&a=AbzfZ1RvAAuDIGXA)

TS URL:	<input type="text" value="/0.ts"/>	Enable ▾
HLS URL:	<input type="text" value="/0.m3u8"/>	Disable ▾
FLV URL:	<input type="text" value="/0.flv"/>	Enable ▾
RTSP URL:	<input type="text" value="/0"/>	Enable ▾
RTMP URL:	<input type="text" value="/0"/>	Disable ▾
RTMP/RTSP PUSH URL:	<input type="text" value="rtmps://live-api-s.facebook.com:443/rtmp/14399"/>	Enable ▾
Multicast IP:	<input type="text" value="238.0.0.1"/>	Disable ▾
Multicast Port:	<input type="text" value="1234"/>	[1-65535]

Apply

Audio Bit rate: 48K, 64K, 96K, 128K, 160K, 192K and 256K

Audio type: AAC,AAC+,MP3, MP2,AC3,G711A,G711U

Audio resample: 44100,48000

System Settings

1. User name and password change

Password

Old password:

New password:

Confirm new password:

Apply

2. Software upgrade

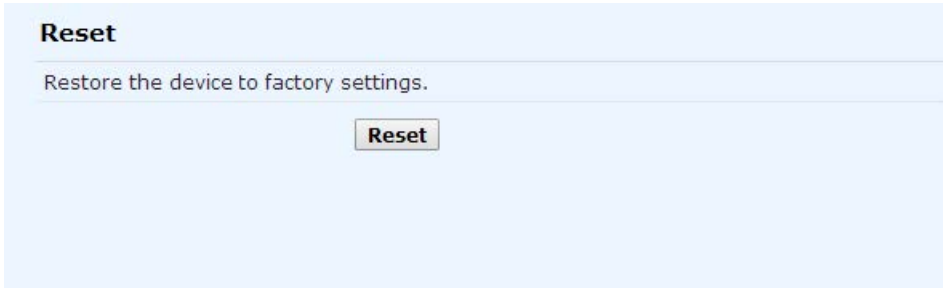
Language: ▾

Version : 3.34

Upgrade: 未选择任何文件 (Upgrade file name is up.bin.Please don't upload by different people at the same time,don't power off or refresh the page during upload.)

Upload

3. **System settings:** Device reset and initialization default settings



FCC Statement

This device complies with part 15 of the FCC Rules. Operation is subject to the following two conditions:

- 1. This device may not cause harmful interference, and
- 2. this device must accept any interference received, including interference that may cause undesired operation.
 - Reorient or relocate the receiving antenna.
 - Increase the separation between the equipment and receiver.
 - Connect the equipment into an outlet on a circuit different from that to which the receiver is connected.
 - Consult the dealer or an experienced radio/TV technician for help.

Any Changes or modifications not expressly approved by the party responsible for compliance could void the user’s authority to operate the equipment.

Note: This equipment has been tested and found to comply with the limits for a Class B digital device, pursuant to part 15 of the FCC Rules. These limits are designed to provide reasonable protection against harmful interference in a residential installation. This equipment generates uses and can radiate radio frequency energy and, if not installed and used in accordance with the instructions, may cause harmful interference to radio communications. However, there is no guarantee that interference will not occur in a particular installation. If this equipment does cause harmful interference to radio or television reception, which can be determined by turning the equipment off and on, the user is encouraged to try to correct the interference by one or more of the following measures: This equipment complies with FCC radiation exposure limits set forth for an uncontrolled environment. This equipment should be installed and operated with minimum distance 20cm etween the radiator & your body.

Documents / Resources

	<p>Shenzhen Unisheen Technology HEVC H.265 MPGE4 FHD Video/Audio Live Encoder [pdf]] Instruction Manual BM3380G-H, BM3380GH, 2A442-BM3380G-H, 2A442BM3380GH, H.265 HEVC, H.264 AVC, MPGE4, HEVC H.265 MPGE4 FHD Video Audio Live Encoder</p>
--	---