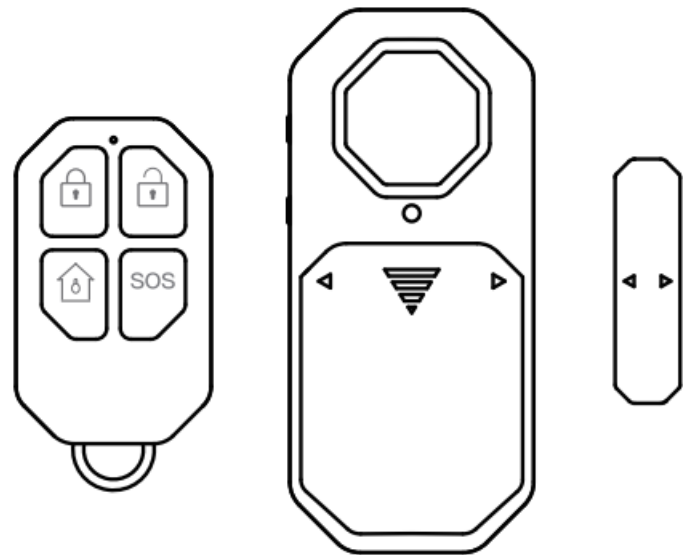




Shenzhen Smart Tech Security SM-06 Door and Window Alarm User Manual

[Home](#) » [Shenzhen Smart Tech Security](#) » Shenzhen Smart Tech Security SM-06 Door and Window Alarm User Manual 



SM-06 Door and Window Alarm
User Manual

Contents

- [1 Instruction](#)
- [2 Standard packing list](#)
- [3 Specifications:](#)
- [4 Functions](#)
- [5 Structure](#)
- [6 How to use](#)
- [7 FCC Statement](#)
- [8 Documents / Resources](#)
- [9 Related Posts](#)

Instruction

Thank you for your purchase and placing your trust in Smate Security. Please read the instruction carefully before using the device for the first time and keep it for future reference.

Standard packing list

Instructions * 1
Door/Window Alarm *1
Remote-controller*1
AM battery*2
3M tape *1

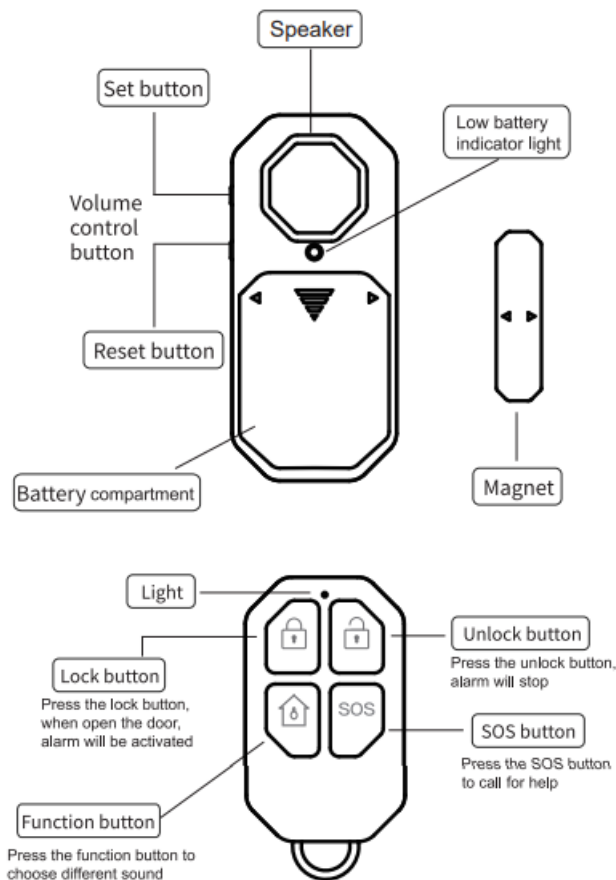
Specifications:

MHZ:	433.9109MHz
Environment humidity:	< 90%
Working temperature:	-10-60°C
Decibel:	140dB
Battery in Alarm device:	2 pcs AAA battery
Battery in Remote-controller device :	1pcs CR2032 battery
Remote control distance:	≥25m
Alarm device Standby:	1year
Remote-controller device Standby:	1year
Remote-controller device weight :	15g
Alarm device weight :	69g
Alarm device size :	100*45*22mm
Magnet size :	45*12*17mm
Remote-controller device size :	60*36*14mm

Functions

- A) Door/Window Burglar alarm
- B) Doorbell C) SOS

Structure



How to use

1. Arm

1. After installation, only closes the door/window, press the lock button, one beep sound, and light flashes, and an alarm is armed. when opening the door or window, there will emit a loud sound 30s and a light flash.
2. The device cannot be armed when the door/window is opened, the light flash and emits a rapid “beep, beep, beep...sound”, Indicating that the arming failed.

2. Function mode

Press the unlock button and then press the function button, the door sensor will emit a corresponding prompt sound 4. flashing light, and switch to the corresponding mode.

1. Doorbell mode: “ding dong sound” and flashing light, enter doorbell mode, when opening the door/window, there will be “Ding Dong, Ding Dong” sounds, and the light flash;
2. Alarm mode: ” beep sound” and flashing light, enter alarm mode when the door/window is opened, The device emits an “alarm sound” and light flash quickly, both off when the door/window is closed or disarmed,
3. Reminder mode: “high and low Volume beep sound” with flashing light, enter the reminder mode, When the door/window is opened, the door sensor emits ” high and low Volume beep sound “with flashing light, both off when the door/window is closed or disarmed, ;



situation 1



situation 2



situation 3

3. SOS button

In any situation, press the SOS button, there will emit a siren sound for 30s.



When encountering danger, press the SOS alarm button to sound an alarm

4. unlock button

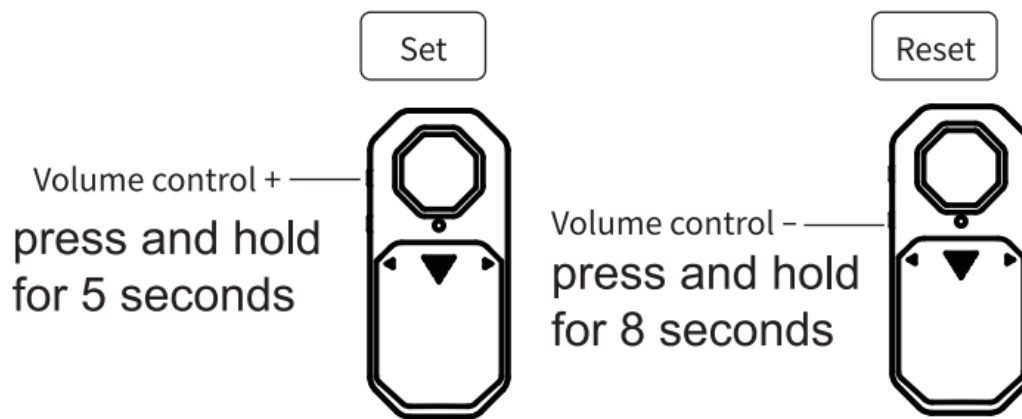
Press the unlock button and the door sensor emits a beep sound with flashing light to exit the current state and enter the disarmed state.

5. Volume setting

1. Click the volume increase button and the door sensor emits a beep sound with flashing light, the volume increases by one level; when emits a continuous beep sound and flashing light to indicate the loudest sound.
2. Click the volume decrease button and the door sensor emits a beep sound with flashing light, a the volume is reduced by one level, when emits a continuous beep sound and flashing light to indicate the minimum volume

6. Learning remote control and elimination

1. connect the remote with alarm: press and hold the volume increase button for 5 seconds light flashes, release after the light flash stop, press any any button on the remote-controller, there will emit a beep sound, means the alarm connect with the remote-controller successfully
2. disconnect the remote with alarm: press and hold the volume decrease button for 8 seconds light flashes, release after the light off, means the alarm and the the remote-controller disconnect.



7. Low Power warning

There will emit “DI DI.” sound when battery voltage is lower than 2.1v. Replace the batteries as soon as possible

FCC Statement

This equipment has been tested and found to comply with the limits for a Class B digital device, pursuant to part 15 of the FCC Rules. These limits are designed to provide reasonable protection against harmful interference in a residential installation. This equipment generates, uses and can radiate radio frequency energy and, if not installed and used in accordance with the instructions, may cause harmful interference to radio communications. However, there is no guarantee that interference will not occur in a particular installation. If this equipment does cause harmful interference to radio or television reception, which can be determined by turning the equipment off and on, the user is encouraged to try to correct the interference by one or more of the following measures:

- Reorient or relocate the receiving antenna.
- Increase the separation between the equipment and receiver.
- Connect the equipment into an outlet on a circuit different from that to which the receiver is connected.
- Consult the dealer or an experienced radio/TV technician for help.

Caution: Any changes or modifications to this device not explicitly approved by manufacturer could void your authority to operate this equipment.

This device complies with part 15 of the FCC Rules. Operation is subject to the following two conditions: (1) This device may not cause harmful interference, and (2) this device must accept any interference received, including interference that may cause undesired operation.

RF Exposure Information

The device has been evaluated to meet general RF exposure requirement. The device can be used in portable exposure condition without restriction.

Documents / Resources

	Shenzhen Smart Tech Security SM-06 Door and Window Alarm [pdf] User Manual DWA-01, DWA01, 2A7UA-DWA-01, 2A7UADWA01, SM-06 Door and Window Alarm, SM-06, Door and Window Alarm
---	--