



Shenzhen Share Vision 2AKFO-F8 Dome Surveillance Camera User Guide

[Home](#) » [Shenzhen Share Vision](#) » Shenzhen Share Vision 2AKFO-F8 Dome Surveillance Camera User Guide 

Contents

- [1 Shenzhen Share Vision 2AKFO-F8 Dome Surveillance Camera](#)
- [2 Packing List](#)
- [3 Appearance](#)
- [4 Installation Guide](#)
- [5 APP INSTALLATION](#)
- [6 APP REGISTRATION](#)
- [7 USING THE APP](#)
- [8 Documents / Resources](#)
- [9 Related Posts](#)



Shenzhen Share Vision 2AKFO-F8 Dome Surveillance Camera

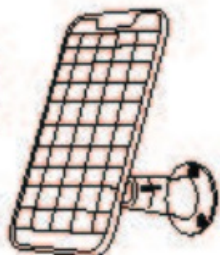


Packing List

After opening the package, please check the low-power wireless battery camera (the “Equipment”) to verify whether the following parts are complete.



Equipment



Solar panel



Bracket



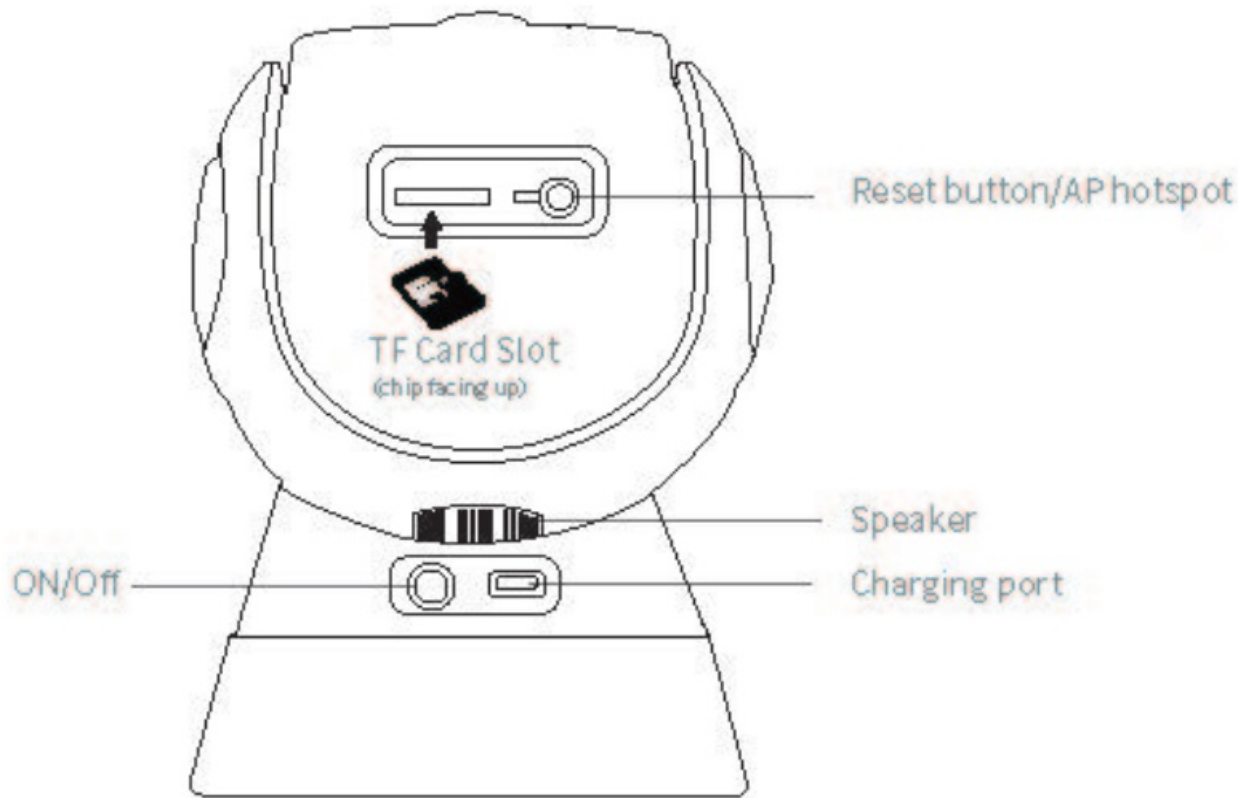
Screw Bag



User manual

Appearance

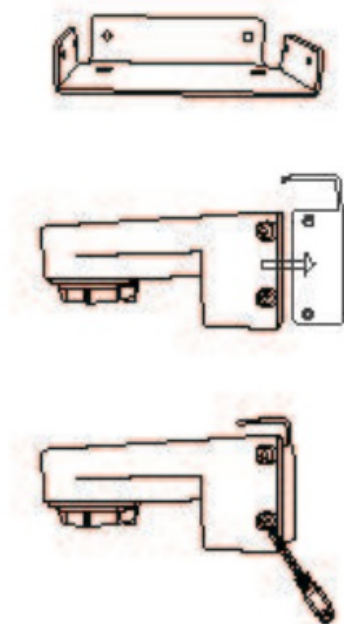
WiFi function introduction



- **Reset the button AP hotspot** Press and hold for around 5 Secs, and let it go when hearing a “beep” sound, the device restores factory settings: Press and hold for around 8 secs and hear 2” beeps”, and then let it goes, the device switches to AP hotspot mode, Hotspot password: 12345678
- **charging port** Type-C power supply and solar panel charging port
- **Speaker** Used to send out a system prompting sound and achieve voice dialogue
- **TF Card Slot** The user can insert 8G, 18G, 32G 64G 128G SD card (Please use a branded card with C10 and above) to store video image files

Installation Guide

As shown in the figure, install the stand



1. Please install and fixed the metal bracket well on the wall
2. Adjust and match the camera bracket hole to the metal bracket hole
3. Screw the camera bracket and fixed it

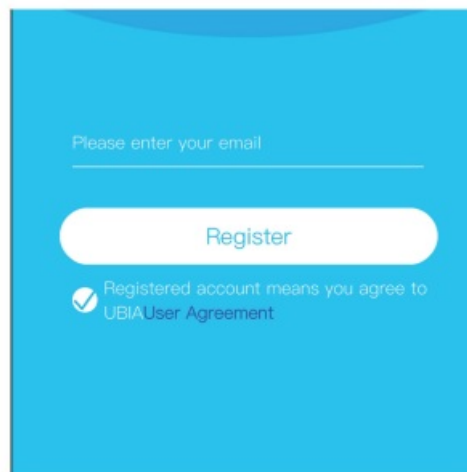
APP INSTALLATION

1. Scan the following QR codes or search for “UBox from the App Store(for iOS devices) or Google Play Store (for Android smartphones) to download and install the app.

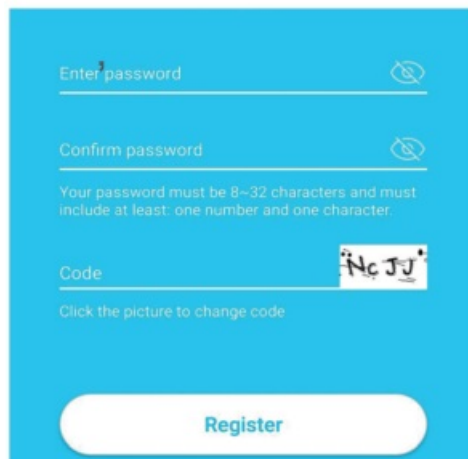


APP REGISTRATION

1. Open the app then input your E-mail address then press 'Register'. Check and select to agree on the agreement then your E-mail box will get a verification mail. (For better user experience, please allow to open all permissions to avoid missing any notifications from the app.)

A screenshot of a mobile app's registration screen. The background is a solid light blue. At the top, there is a white text input field with the placeholder text "Please enter your email". Below the input field is a white rounded rectangular button with the word "Register" in blue. Underneath the button, there is a small blue checkmark icon followed by the text "Registered account means you agree to UBIA User Agreement".

2. Set the login password and confirm the login password. Then press Register to the next step. (For your password safety the password requires more than 8 characters plus a combination of letters)



Enter password

Confirm password

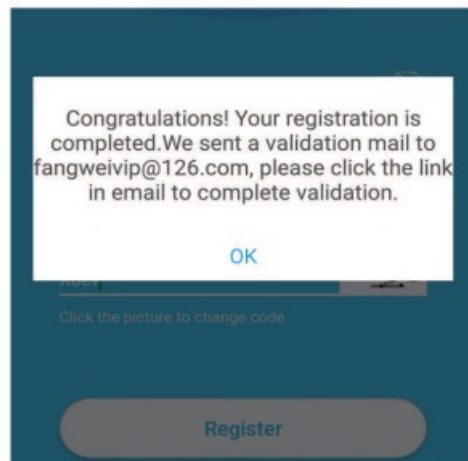
Your password must be 8~32 characters and must include at least one number and one character.

Code

Click the picture to change code

Register

3. We send a verification mail to you, go to your mailbox and click the link to complete the verification.



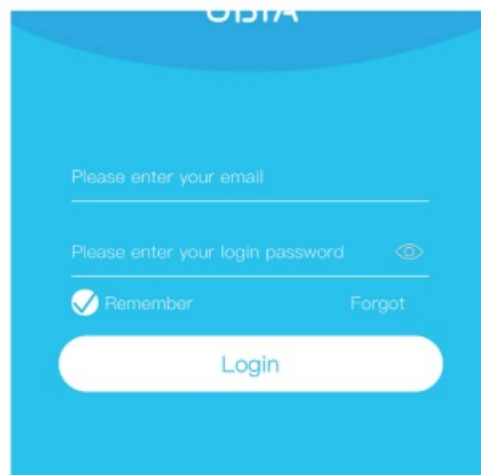
Congratulations! Your registration is completed. We sent a validation mail to fangweivip@126.com, please click the link in email to complete validation.

OK

Click the picture to change code

Register

4. Enter your E-mail address, and password, and click log in. (APP will auto-fill the account information)



Please enter your email

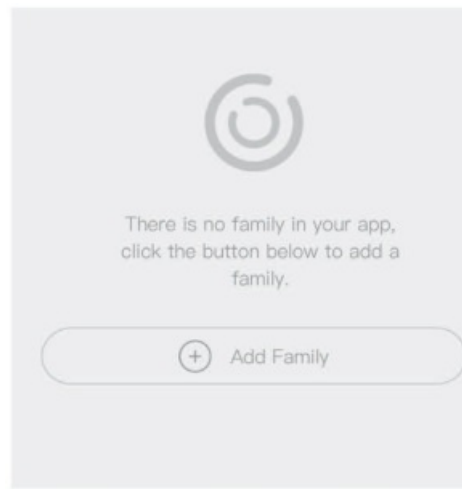
Please enter your login password

☒ Remember [Forgot](#)

Login

WI-FI CONNECTION

1. Press 'Add Family' then set the room or position as per reminders.

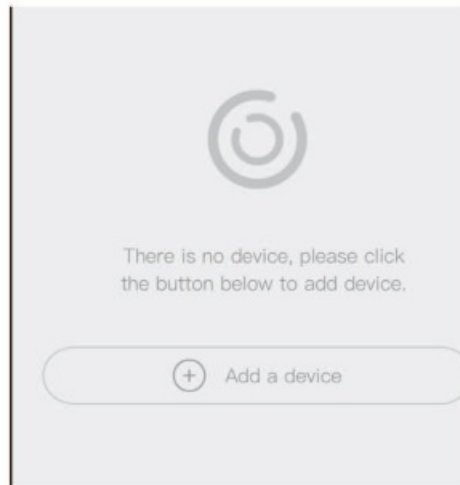


2. Enter your family name and then press 'Next'.



3. Input the necessary information just like Country, Province, then press 'Done'.

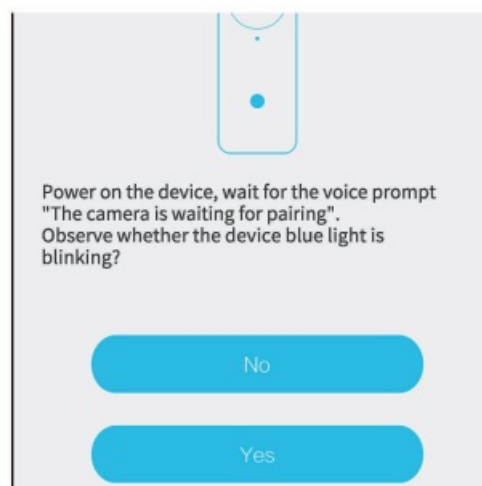
4. Press 'Add a device' to add a smart device



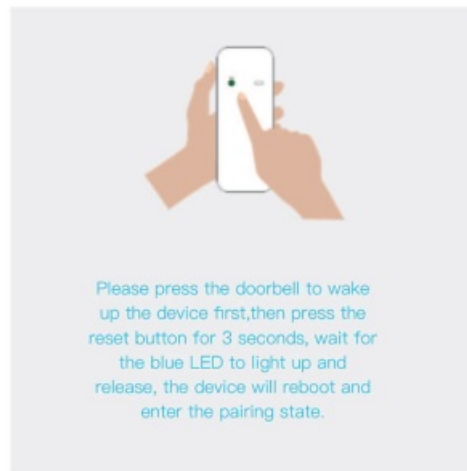
5. Connect the device with a power supply, and make sure your mobile phone is connected to available Wi-Fi. Then press 'Setup device'



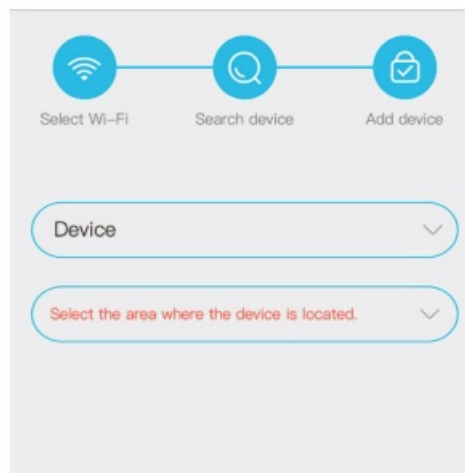
6. After the power on the device, wait for the device's blue LED is blinking Which means your device is in pairing mode



7. If the device blue are not blinking, please press the power/Call key to wake up the device first, then hold and press the RESET button until the blue indicator lights up and then release. The device will reboot and enter the pairing state.



8. Give the device a name and select the device address before setup the APP has a default name. after confirmed, go to the next step.



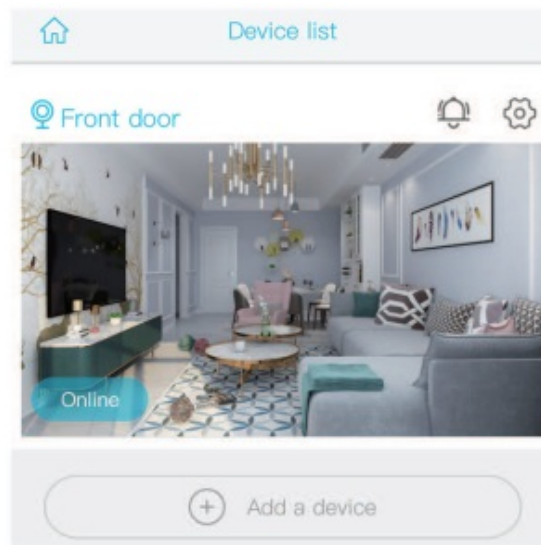
9. The app will input the Wi-Fi name automatically, please input the correct Wi-Fi Password. Then you can choose the 'QR code configuration' or 'Sound wave configuration'.



10. QR Code configuration: select the QR code configuration then the mobile phone display a QR code. Use the device to scan the QR code 10cm away from the mobile phone.



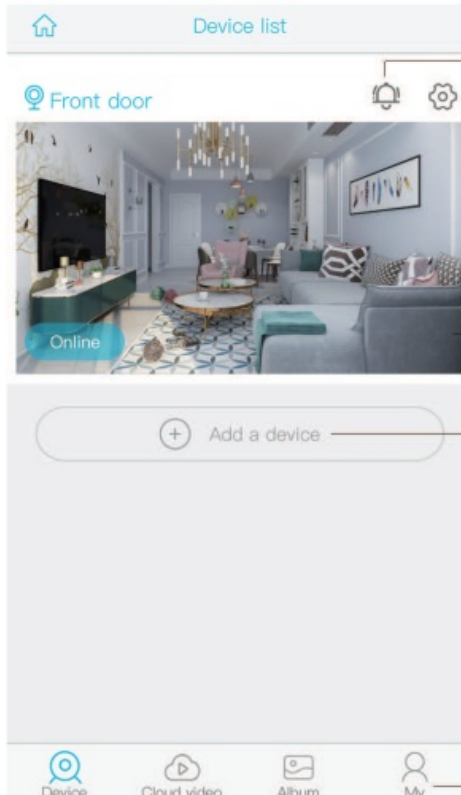
11. The device will enter to the device list automatically. Setup success! The device is ready to use.



12. Notes about PIR detection

- Users can change the PIR detection sensitivity in device settings we recommend setting the sensitivity at “Disabled” or “Low” to reduce false alert and save the battery power in noisy environments.
- **Disabled:** disabled PIR detection.
- **Low:** delay 7 seconds PIR detects a moving
- **Medium:** delay 5 seconds PIR detects a moving.
- **High:** delay 1 second PIR detects a moving.

USING THE APP



Enter to select your family or smart device location

Turn on/off the push notification.


Settings: Sharing, Cloud storage, Delete the device..

Press to enter the preview section.

Press to add a smart device

Account and value-added account management

Documents / Resources

<div><div>Dome surve illance camera</div><div>Quick Guide</div><div><small>* Before using the product, please read the Quick Guide carefully and keep it handy.</small></div><div></div><div>EN CH</div><div><small>** This quick guide manual is for reference only.</small></div></div>	<p>Shenzhen Share Vision 2AKFO-F8 Dome Surve illance Camera [pdf] User Guide</p> <p>F8, 2AKFO-F8, 2AKFOF8, 2AKFO-F8 Dome Surve illance Camera, 2AKFO-F8, Dome Surve illance Camera, Surve illance Camera, illance Camera, Camera</p>
--	--