



# Shenzhen Sei Robotics SN8BKCX Remote Control User Guide

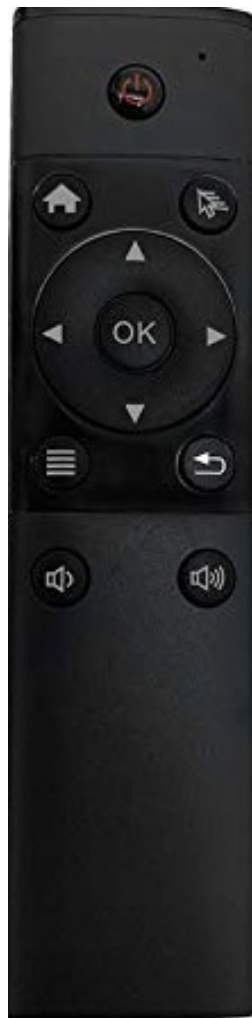
[Home](#) » [Shenzhen Sei Robotics](#) » Shenzhen Sei Robotics SN8BKCX Remote Control User Guide 

## Contents

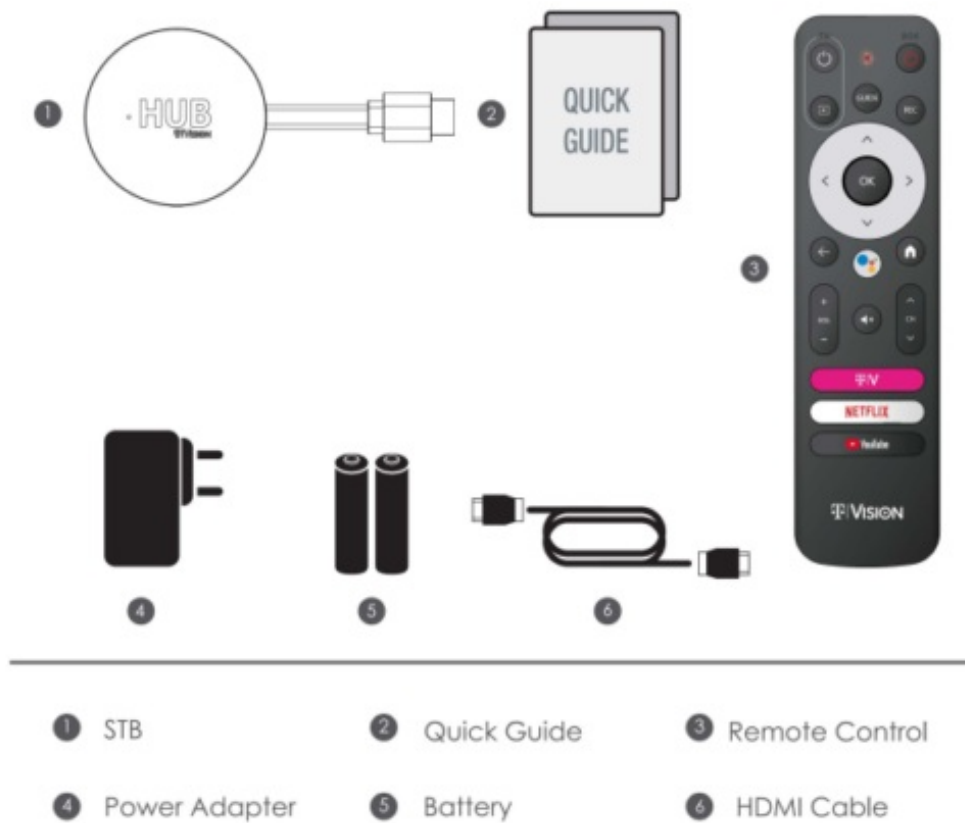
- [1 Shenzhen Sei Robotics SN8BKCX Remote Control](#)
- [2 QUICK GUIDE](#)
- [3 DEVICE INFORMATION](#)
- [4 SETUP DIAGRAMREMOTE CONTROL](#)
- [5 ANDROID TV](#)
- [6 SPECIFICATION](#)
- [7 SAFETY INFORMATION](#)
- [8 FCC Rules](#)
- [9 Documents / Resources](#)
- [10 Related Posts](#)



**Shenzhen Sei Robotics SN8BKCX Remote Control**

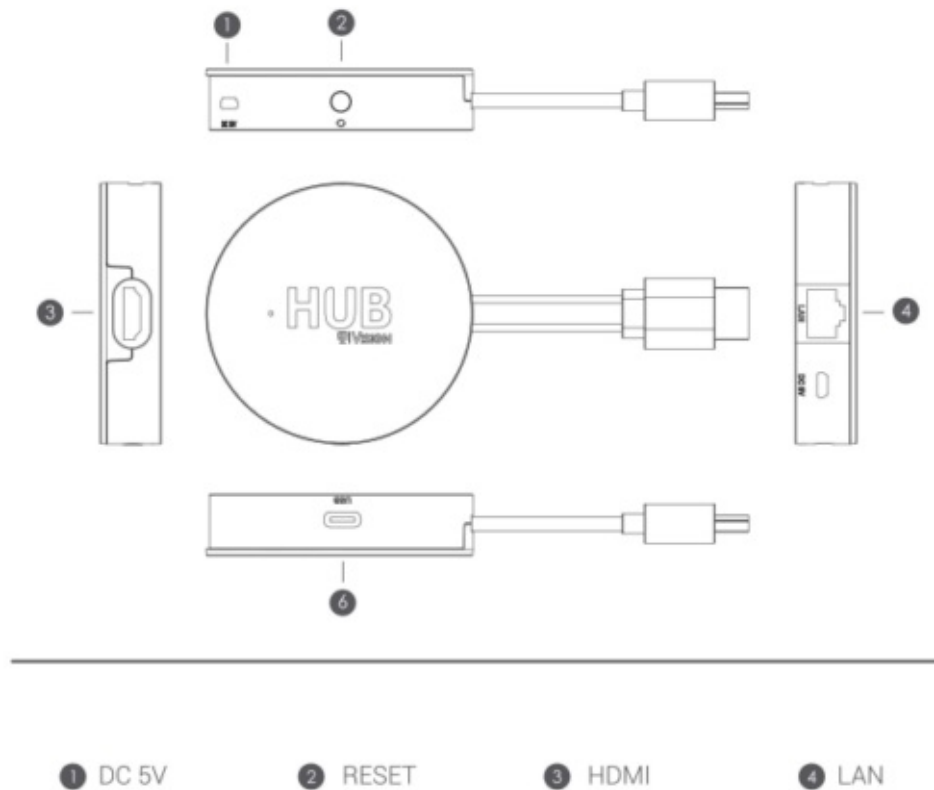


## QUICK GUIDE



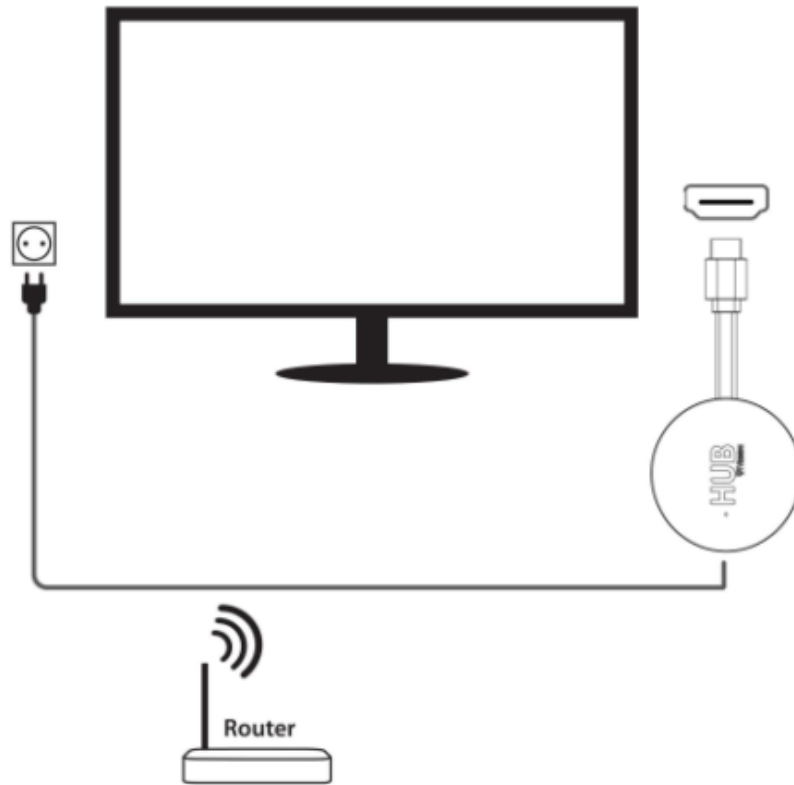
1. STB
2. Quick Guide
3. Remote Control
4. Power Adapter
5. Battery
6. HDMI Cable

## DEVICE INFORMATION



1. DC 5V
2. RESET
3. HDMI
4. LAN

## SETUP DIAGRAM



## REMOTE CONTROL

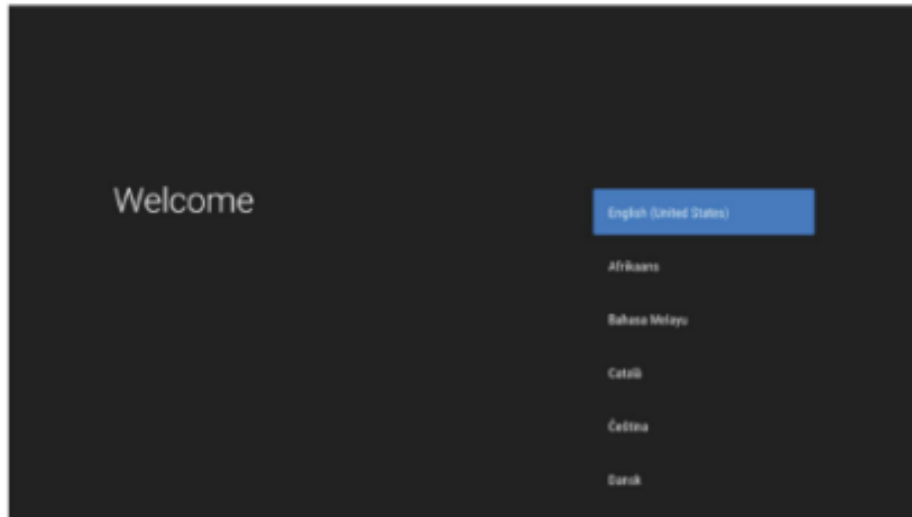
### Do more on your TV with your voice

OK Search for shows, get recommendations, and even control your TV faster – with your voice. Ask Google for a little help on your big screen.

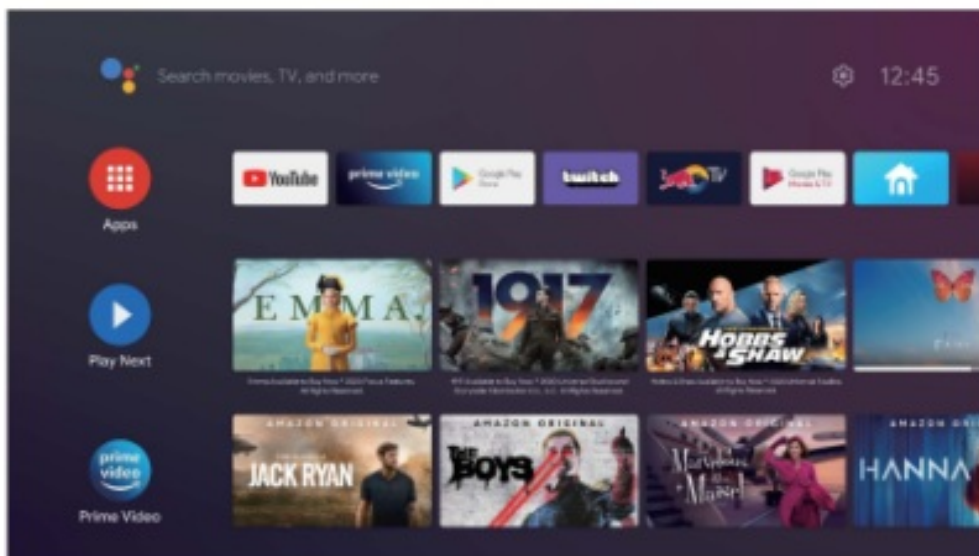
### Pairing guide

Long press the Back+Home button at the same time, until the red light flashes quickly, then release, that means RCU enters the pairing mode. Waiting for a few seconds and stop pressing any buttons, until it pops up the message of pairing successfully.

## ANDROID TV



Complete the on-screen setup Follow the on-screen instructions using your remote to navigate through The setup process.



Android TVIM brings a world of content to your biggest screen. Ask Google to search for the latest blockbuster, stream showS, or open multiplayer games. Have if dim the lights by connecting smart home devices. Manage flasks and see your calendar. Or ask it questions and see the answers on your TV. Press the Google Assistant button on your remote to talk to Google.

## SPECIFICATION

Hardware	
Chipset	Quadcore ARM A55 2.0GHz 24000DMIPS
RAM	2GB DDR
Flash	eMMC 8GB
Video	
Video Decoding	AV1 MP-10@L5.1 up to 4Kx2K@60fps VP9 Profile-2 up to 4Kx2K@60fps H.265 HEVC MP-10@L5.1 up to 4Kx2K@60fps AVS2-P2 Profile up to 4Kx2K@60fps H.264 AVC HP@L5.1 up to 4Kx2K@30fps H.264 MVC up to 1080P@60fps MPEG-4 ASP@L5 up to 1080P@60fps (ISO-14496) WMV/VC-1 SP/MP/AP up to 1080P@60fps AVS-P16(AVS+) /AVS-P2 JiZhun Profile up to 1080P@60fps MPEG-2 MP/HL up to 1080P@60fps (ISO-13818) MPEG-1 MP/HL up to 1080P@60fps (ISO-11172) RealVideo 8/9/10 up to 1080P@60fps
Video File Format	Support *.mkv, *.wmv, *.mpg, *.mpeg, *.dat, *.avi, *.mov, *.iso, *.mp4, *.rm, *.jpg, *
Video Output	HDMI 2.1 , HDCP2.2
Aspect Ratio	Auto, Full screen
Video Resolution	480i/p, 576i/p, 720p, 1080i/p and 4Kx2K
Power	
DC Input Range	5V 1A
Power Consumption	Maximum 5W

## SAFETY INFORMATION

**NOTICE:** To prevent fire and electric shock, do not expose this device to rain or moisture. In order to avoid any possible risk of electric shock, never attempt to open the unit. In case of the unit breaking down, repair of the unit should be carried out by qualified technicians.

**No CAUTION!** part of this unit should be repaired by users.

## WARNING!

- Place the device in a well-ventilated location to prevent the accumulation of internal heat.
- Protect the device from high temperatures, humidity, water, and dust.
- Do not place any objects that might damage your unit near it (e.g. liquid filled objects or candles).

Google, Google Play, YouTube, Android TV, and other marks are trademarks of Google LLC. Google Assistant is not available in certain languages and countries.

## FCC Rules

This device complies with Part 15 of the FCC Rules. Operation is subject to the following two conditions:

1. this device may not cause harmful interference, and
2. this device must accept any interference received, including interference that may cause undesired operation.

Changes or modifications to this unit not expressly approved by the party responsible for compliance could void the user's authority to operate the equipment. NOTE: This equipment has been tested and found to comply with the limits for a Class B digital device, pursuant to Part 15 of the FCC Rules. These limits are designed to provide reasonable protection against harmful interference in a residential installation. This equipment generates, uses, and can radiate radio frequency energy and, if not installed and used in accordance with the instructions, may cause harmful interference to radio communications. However, there is no guarantee that interference will not occur in a particular installation. If this equipment does cause harmful interference to radio or television reception, which can be determined by turning the equipment off and on, the user is encouraged to try to correct the interference by one or more of the following measures:

- Reorient or relocate the receiving antenna.
- Increase the separation between the equipment and receiver.
- Connect the equipment into an outlet on a circuit different from that to which the receiver is connected.
- Consult the dealer or an experienced radio/TV technician for help.

This device and its antenna(s) must not be co-located or operated in conjunction with any other antenna or transmitter. Radiation Exposure Statement To maintain compliance with FCC's RF exposure guidelines, This equipment should be installed and operated at a minimum distance of 20cm from your body.

## Documents / Resources



[Shenzhen Sei Robotics SN8BKCX Remote Control](#) [pdf] User Guide  
SN8BKCX, 2AOVU-SN8BKCX, 2AOVUSN8BKCX, SN8BKCX Remote Control, Remote Control