



Shenzhen Rigugangyan Technology SQ11 Wifi Camera Instruction Manual

[Home](#) » [Shenzhen Rigugangyan Technology](#) » Shenzhen Rigugangyan Technology SQ11 Wifi Camera Instruction Manual 

Contents

- [1 Shenzhen Rigugangyan Technology SQ11 Wifi Camera](#)
- [2 Documents / Resources](#)
- [3 Related Posts](#)

Shenzhen

Shenzhen Rigugangyan Technology SQ11 Wifi Camera



Download and install JXLCAM. IOS searches for “JXLCAM” download directly at the Apple App Store. For convenience, please scan the download and installation of the QR code below.

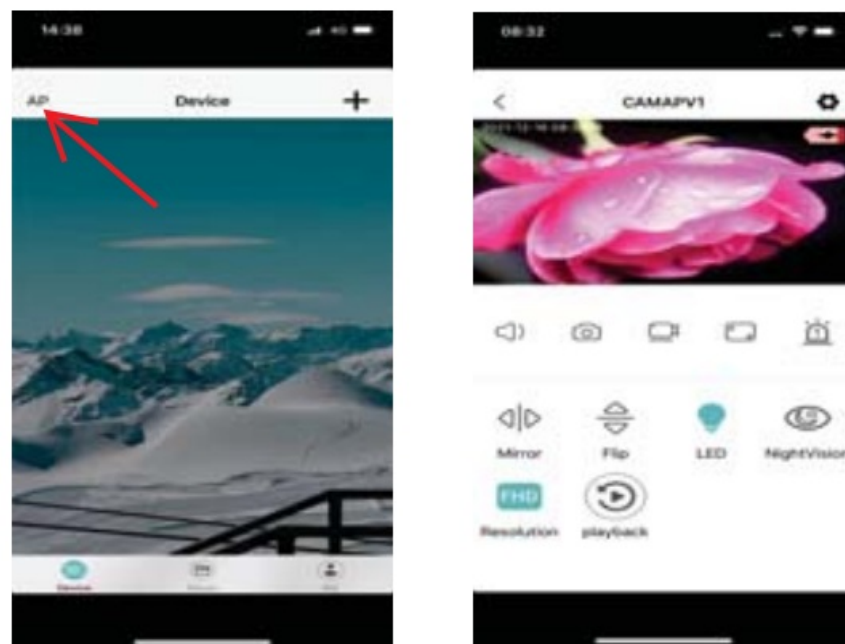
Note: during installation, all permissions of the JXLCAM APP need to be allowed, otherwise the APP will not work properly.



Please select APP to download



Open the list of mobile phones WIFI, connect to B/xCCQ..., open the APP page after success, click “AP” as shown in the figure below, and watch the video.

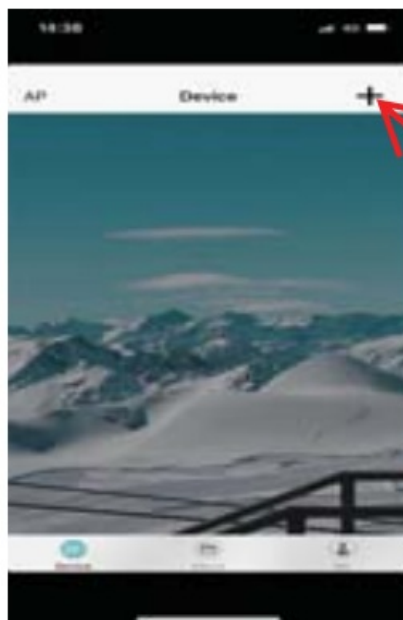


Note: when there is no WIFI in the environment, you can use AP mode to connect, which is valid for no more than 10m, which can achieve localized video viewing.

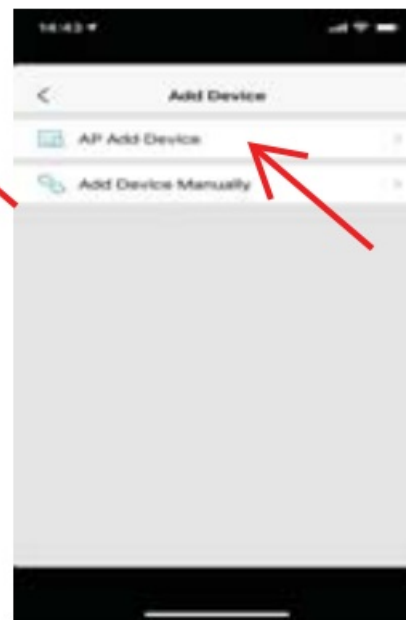
- First confirm that there is a available WIFI near the device, turn on the device, flash the blue indicator light quickly, and the device is in a state to be connected. (Note: WIFI signals supported only in the 2.4G band)
- You can't successfully distribute the network when the power is insufficient.
- When wiring, please try to bring the device close to the router. When the nearby WIFI signal is weak, the image will be stuck if the network is not successful or the network is successful.



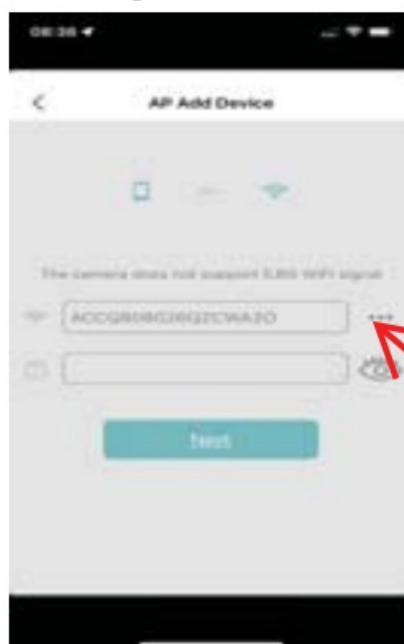
- Open the APP  and follow these steps:



①Click“+”



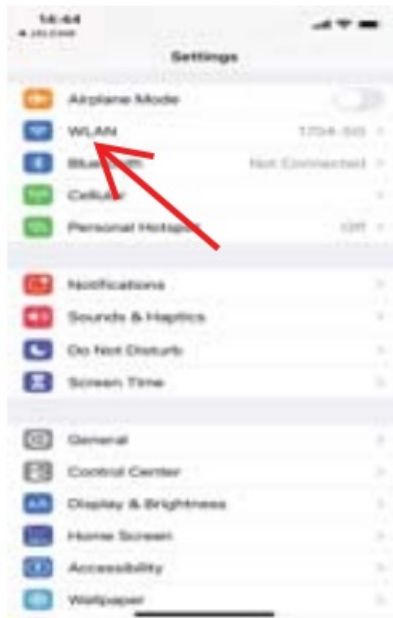
②Click "AP add Device"



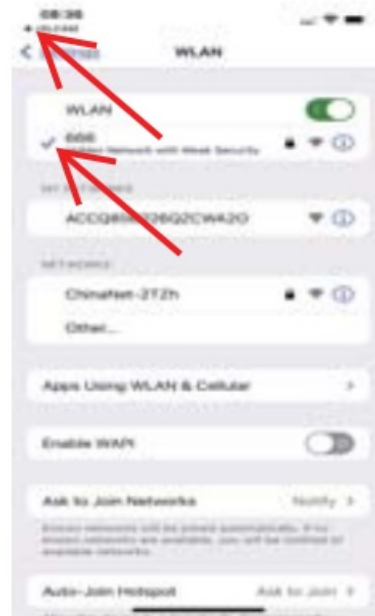
③Click "..."



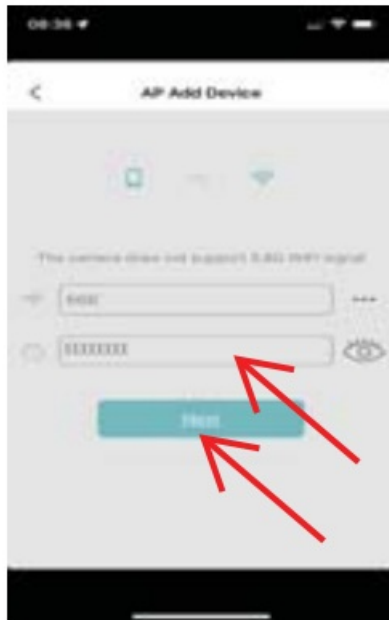
④Click “Settings”



⑤.Click "WLAN"



⑥Select to connect your 2.4G band WIFI, and then click JXLCAM in the upper left corner to return to the APP.



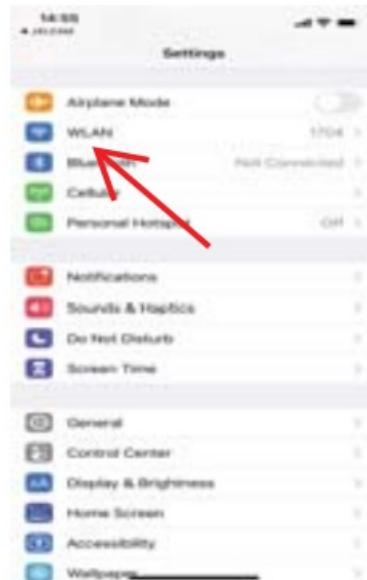
⑦Enter the correct WIFI password and click "Next"



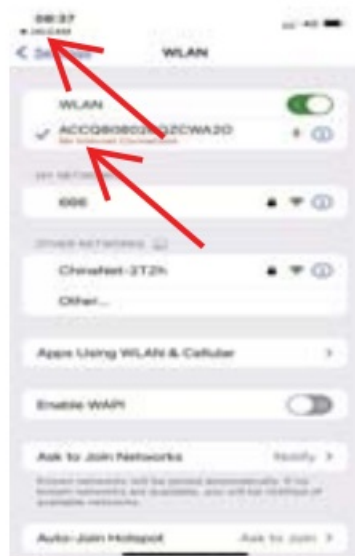
⑧.Click "..."



⑨Click "Settings"



⑩Click"WLAN"



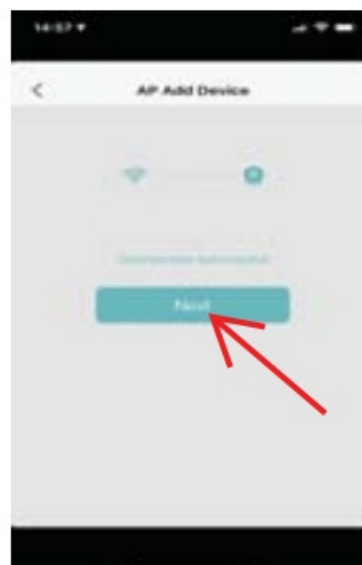
⑪Connect to the device hotspot "B/XCCQ..."
Then click JXLCAM in the upper left corner
to return to APP.



⑫Click"Add Device"



⑬Wait for distribution network.



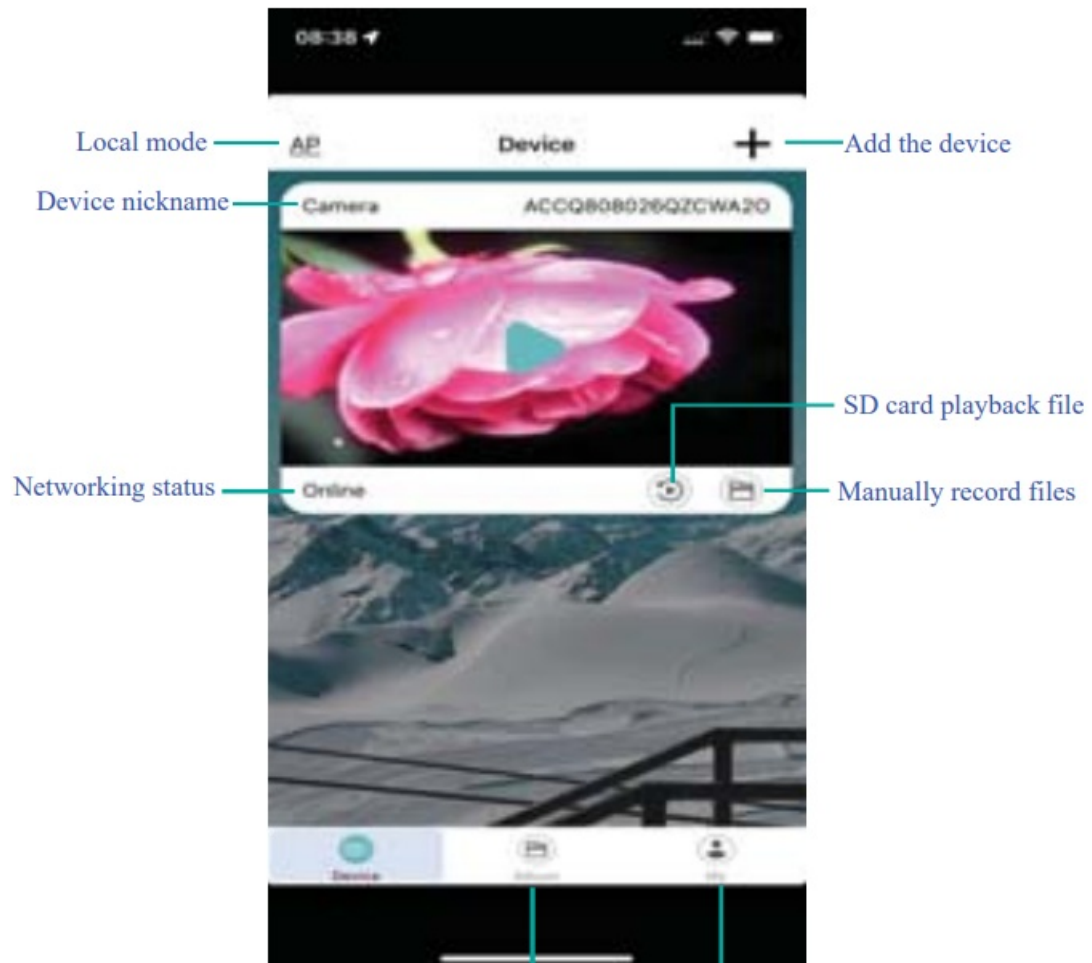
⑭After seeing the success of the
distribution network, click"Next" .

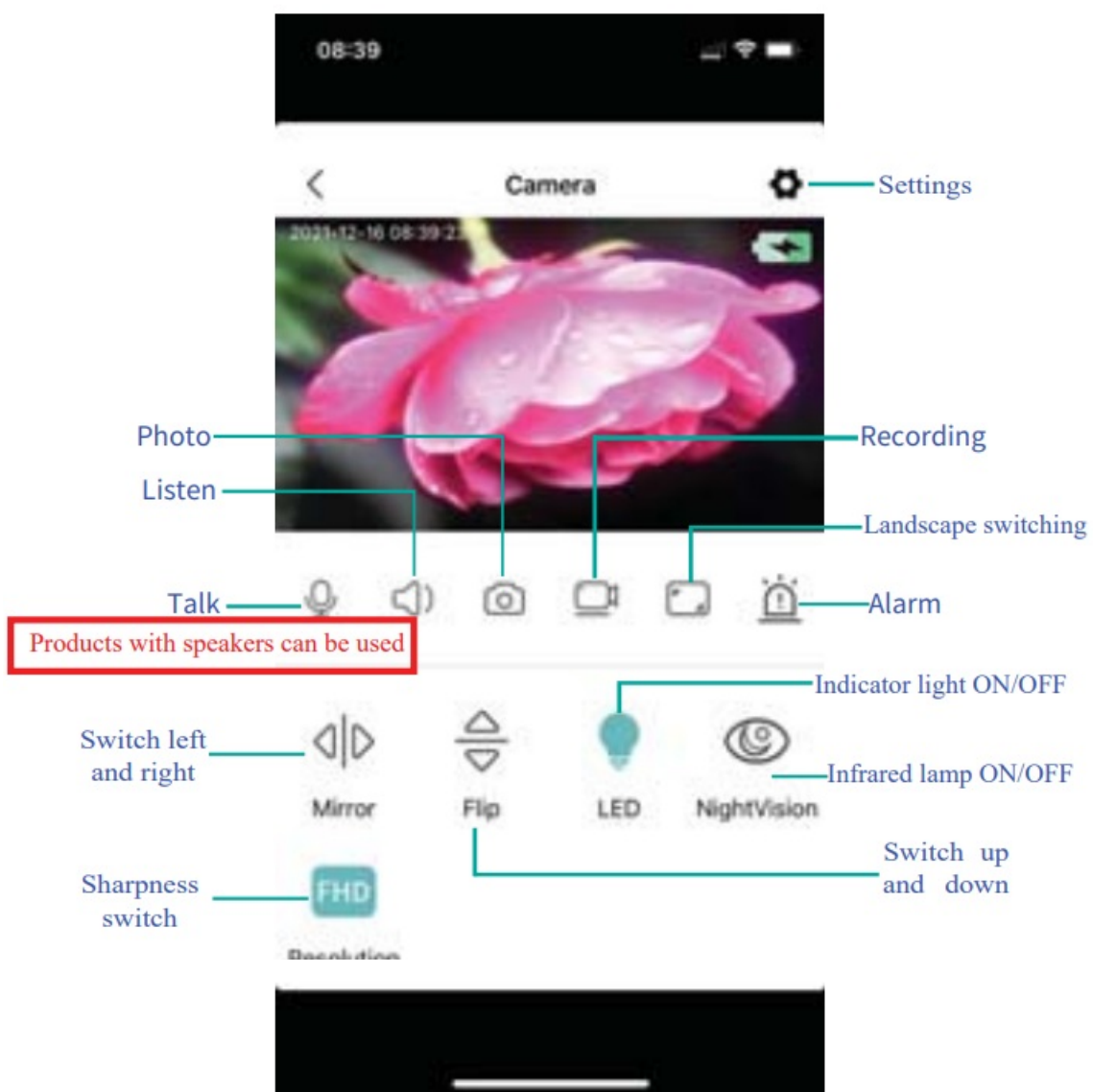
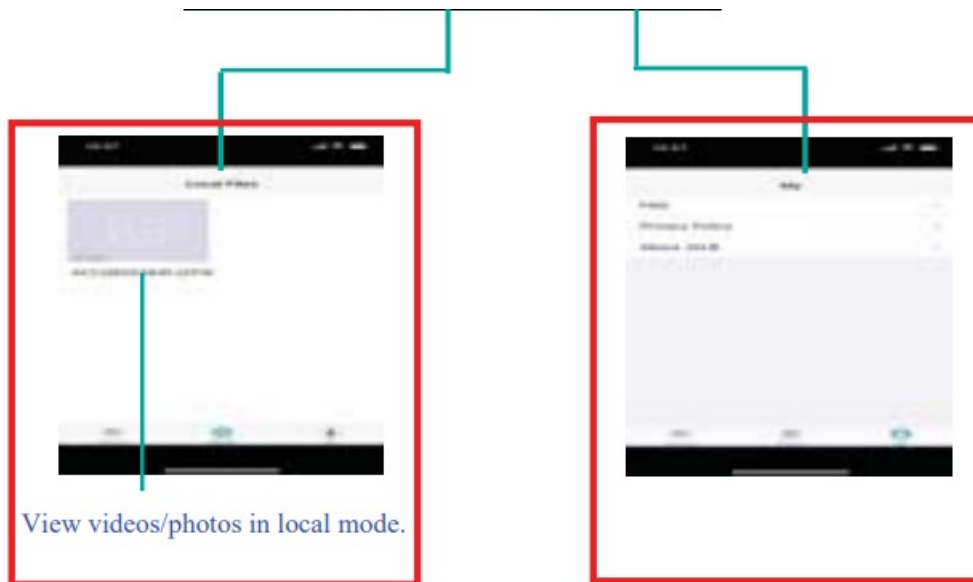


⑮ Customizable name, click “next”

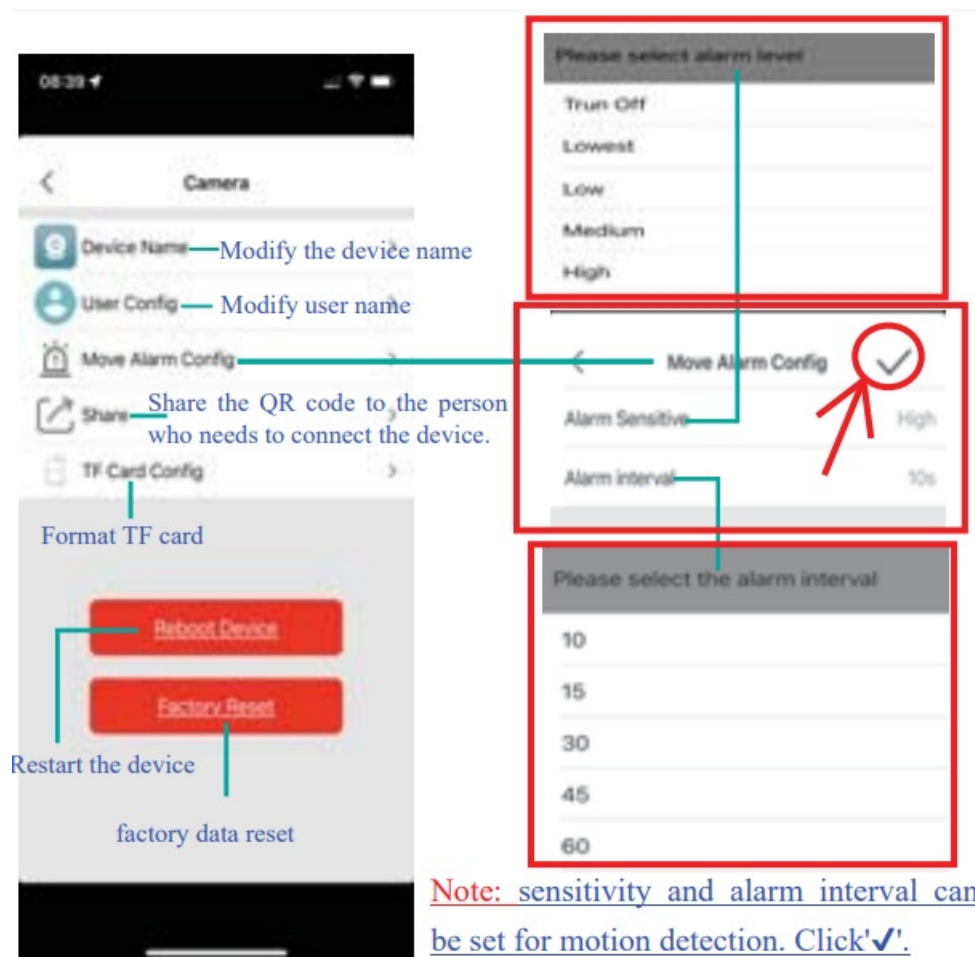


⑯ You can view the camera preview page on the home page.






If you need to store video content, you need to install an SD card. This machine supports loop video recording



Note: sensitivity and alarm interval can be set for motion detection. Click'✓'.

1. When the device fails to configure the network, please check whether the router and WiFi password are configured correctly (the device does not support WiFi signals in the 5.8G band). After confirming that it is correct, you can press and hold the reset button until the device indicator flashes quickly, restore the factory settings, and reconfigure network.
2. When the software homepage shows that the device is offline, you can check whether the device is normally powered on, and click the refresh icon in the upper right corner to refresh.
3. The initial password of the device is admin.

Documents / Resources

	<p>Shenzhen Riguangyan Technology SQ11 Wifi Camera [pdf] Instruction Manual SQ11, 2A46Y-SQ11, 2A46YSQ11, SQ11 Wifi Camera, Wifi Camera</p>
---	--