



# Shenzhen Qi Yuan Science Technology FFRC10A FIFISH Communication Station User Manual

[Home](#) » [Shenzhen Qi Yuan Science Technology](#) » Shenzhen Qi Yuan Science Technology FFRC10A FIFISH Communication Station User Manual 

## Shenzhen

### FFRC10A FIFISH Communication Station User Manual Model: FFRC10A

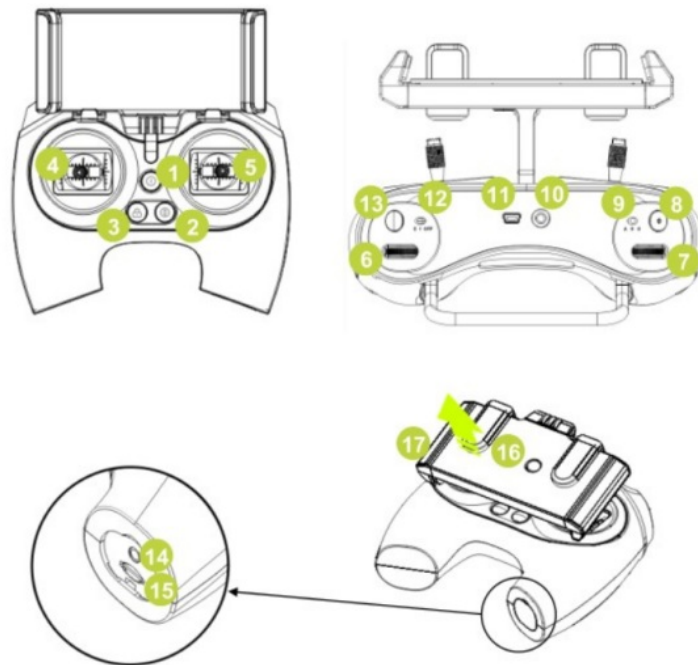
The Communication Station FFRC10A is used for the FIFISH series robot of QINGDAO QIYUAN CXIN KEJI and Shenzhen QIYUAN technology limited company.

It works as a video/image signal repeater station by achieving signal reception between robot and mobile devices.

#### Contents

- [1 Communication Station](#)
- [2 RF Specification](#)
- [3 Documents / Resources](#)
  - [3.1 References](#)
- [4 Related Posts](#)

#### Communication Station



1. ON/OFF	10. Tether Port
2. Depth Holding (ON/OFF)	11. Ethernet port
3. LOCK/UNLOCK	12. LED Brightness (OFF. 1, 2)
4. Left Stick	13. Photo (As default can be
5. Right Stick customized defined)	14. Charging Port
6. Right Wheel	15. Micro SD Slot
7. Left Wheel	16. Clamp Release Button
8. Video Record/Stop	17. Clamp for Smart Device
9. Modes (Attitude/Sport/Combine)	

1. **ON/OFF:** Power on/off-key.
2. **Depth (ON/OFF):** Depth information on/off
3. **Lock/unlock:** Lock and unlock the imaging
4. **Left stick:** choose the left side of the video or image.
5. **Right stick:** choose the right side of the video or image
6. **Right wheel:** choose upside of video or image
7. **Left wheel:** choose the downside of the video or image
8. **Video record/stop:** Video record key
9. **Mode select:** change video or image modes.
10. **Tether port:** insert the hole of the communication tether.
11. **Ethernet port:** an Ethernet output port.
12. **LED brightness:** brightness of the LED.
13. **Photo:** press to take a photo.
14. **Charging port:** insert the 5V/3A adapter to charge the battery
15. **Micro SD slot:** can insert a micro SD card to download the data from the internal camera of the robot.
16. Button to adjust holder width.

## 17. Holder for mobile phone or pad

Note: The device is restricted to indoor use only when operating in the 5150 to 5250MHz frequency range.

When it works, the router processor will broadcast an SSID: FIFISHRC\_xxxx; in the mobile device's wifi setting, choose to connect to this SSID, then launch FIFISH APP and can see the camera image. The signal transmission path can refer to the block diagram above: Image from the Camera of the Robot go through PLC modem and PHY via Ethernet to arrive at the router processor, processor then forward these data to 5GHz Radio chip via PCI-E, in the end, the Radio chip sends the image and video to a mobile device using a PCB antenna for wireless communication.



**FCC Caution:** Any changes or modifications not expressly approved by the party responsible for compliance could void the user's authority to operate this equipment.

This device complies with part 15 of the FCC Rules. Operation is subject to the following two conditions: (1) this device may not cause harmful interference, and (2) this device must accept any interference received, including interference that may cause undesired operation.

This device and its antenna(s) must not be co-located or operating in conjunction with any other antenna or transmitter.

**NOTE:** This equipment has been tested and found to comply with the limits for a Class B digital device, pursuant to Part 15 of the FCC Rules. These limits are designed to provide reasonable protection against harmful interference in a residential installation. This equipment generates, uses and can radiate radio frequency energy and, if not installed and used in accordance with the instructions, may cause harmful interference to radio communications. However, there is no guarantee that interference will not occur in a particular installation.

If this equipment does cause harmful interference to radio or television reception, which can be determined by turning the equipment off and on, the user is encouraged to try to correct the interference by one or more of the following measures:

- Reorient or relocate the receiving antenna.
- Increase the separation between the equipment and receiver.
- Connect the equipment into an outlet on a circuit different from that to which the receiver is connected.
- Consult the dealer or an experienced radio/TV technician for help.

The device has been evaluated to meet general RF exposure requirements. The device can be used in portable exposure conditions without restriction

This device contains license-exempt transmitter(s)/receiver(s) that comply with Innovation, Science and Economic Development Canada's license-exempt RSS(s). Operation is subject to the following two conditions:

1. This device may not cause interference.
2. This device must accept any interference, including interference that may cause undesired operation of the

device.

## RF Specification

Function	Operation Frequency	Max RF output power:	Limit
Wi-Fi 5.2G(802.11a/n20/n40/ ac20/ac40/ac80)	802.11a/ n20/ac20:5180MHz~5240MHz 802.11 n40/ac40:5190MHz~5230MHz 802.11ac80:5210MHz	14.48 dBm	23dBm.

## EU Declaration of Conformity

We,

QINGDAO QIYUAN CXIN KEJI CO., LTD(No. 111 Daoli Street Tianheng Town Jimo District Qingdao, Shandong, P.R. China) hereby declares that this Communication Station is in compliance with the essential requirements and other relevant provisions of Directive 2014/53/EU.

According to Article 10(2) of Directive 2014/53/EU, the FFRC10A can be used in Europe without restriction.

### Warning:

**RED**

**Manufacturer's Name:** QINGDAO QIYUAN CXIN KEJI CO., LTD

**Product Name:** Sigur MR100-Multi reader

**Model number:** Communication Station

**Operating Temperature:** -10°C to 40°C

This product can be used across all EU member states.

Hereby, QINGDAO QIYUAN CXIN KEJI CO., LTD declares that this Communication Station product is in compliance with the essential requirements and other relevant provisions of Directive 2014/53/EU. A copy of the Declaration of

Conformity can be found at the Website: <http://www.qysea.com>

The device complies with RF specifications when the device is used at 20cm from your body.


Care for the environment! Must not be discarded with household waste!

### Restrictions in the 5 GHz band:

According to Article 10 (10) of Directive 2014/53/EU, the packaging shows that this radio equipment will be subject to some restrictions when placed on the market in Belgium (BE), Bulgaria (BG), the Czech Republic (CZ), Denmark (DK), Germany (DE), Estonia (EE), Ireland (IE), Greece (EL), Spain(ES), France (FR), Croatia (HR), Italy (IT), Cyprus (CY), Latvia (LV), Lithuania(LT), Luxembourg (LU), Hungary (HU), Malta (MT), Netherlands (NL), Austria(AT), Poland (PL), Portugal (PT), Romania (RO), Slovenia (SI), Slovakia (SK), Finland (FI), Sweden (SE), the United Kingdom (UK), Turkey (TR),

Norway(NO), Switzerland (CH), Iceland (IS), and Liechtenstein (LI).

The WLAN function for this device is restricted to indoor use only when operating in the 5150 to 5250 MHz frequency range.

	ES	LU	RO	CZ	FR	HU	SI
	DK	HR	BE	BG	DE	EE	IE
	EL	IT	Cy	LV	LT	SK	MT
	NL	AT	PL	PT	FI	SE	UK
	TR	NO	CH	IS	LI		

Documents / Resources

<div>FFRC10A FIFISH Communication Station</div> <div>User Manual</div> <div>Model FFRC10A</div>	<a href="#">Shenzhen Qi Yuan Science Technology FFRC10A FIFISH Communication Station</a> [pdf] Us er Manual FFRC10A, 2AONKFFRC10A, FFRC10A FIFISH Communication Station, FFRC10A, FIFISH Co mmunication Station
---	--

References

- 
[QYSEA: Underwater Remote Operated Robot, ROV Vehicle, 4K Drone & Camera Manufacturer](#)