



Shenzhen Powerqi Technology LC01 Alarm Clock Wireless Charger User Manual

[Home](#) » [Shenzhen Powerqi Technology](#) » Shenzhen Powerqi Technology LC01 Alarm Clock Wireless Charger User Manual 

SHENZHEN

POWERQI

Product Colour, Material & Finishing Specifications

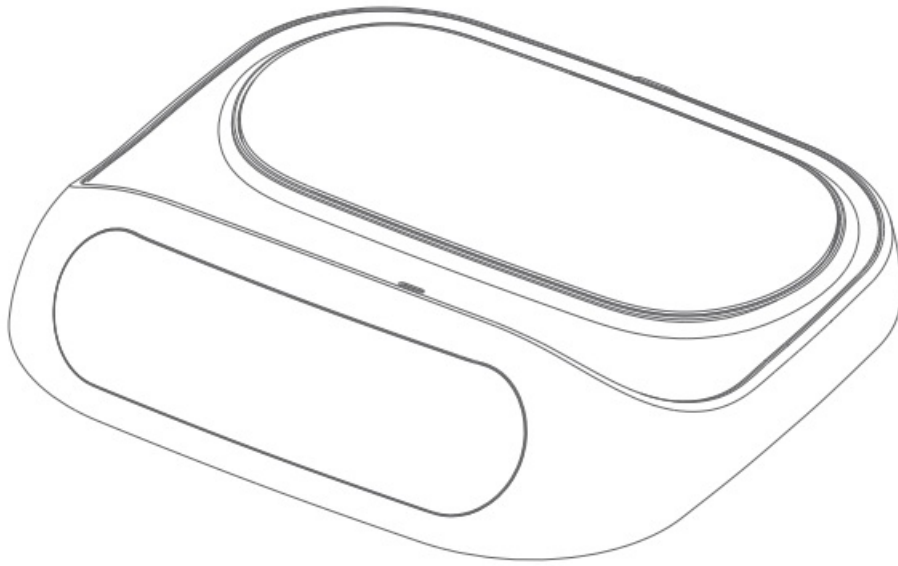
Product Model	LC03	Brand		Job No.	
Product Type		Description	/	Revision	
Dimension	85*65mm	Original Designer		Date	7/7/2021
Scale	1:01	Technology	128g	Verifying	/

Alarm Clock Wireless Charger User Manual

User Manual

Thanks for using this product, this is an Alarm Clock Wireless Charger, allowing users to enjoy the digital products' wireless charging unlimited fun.

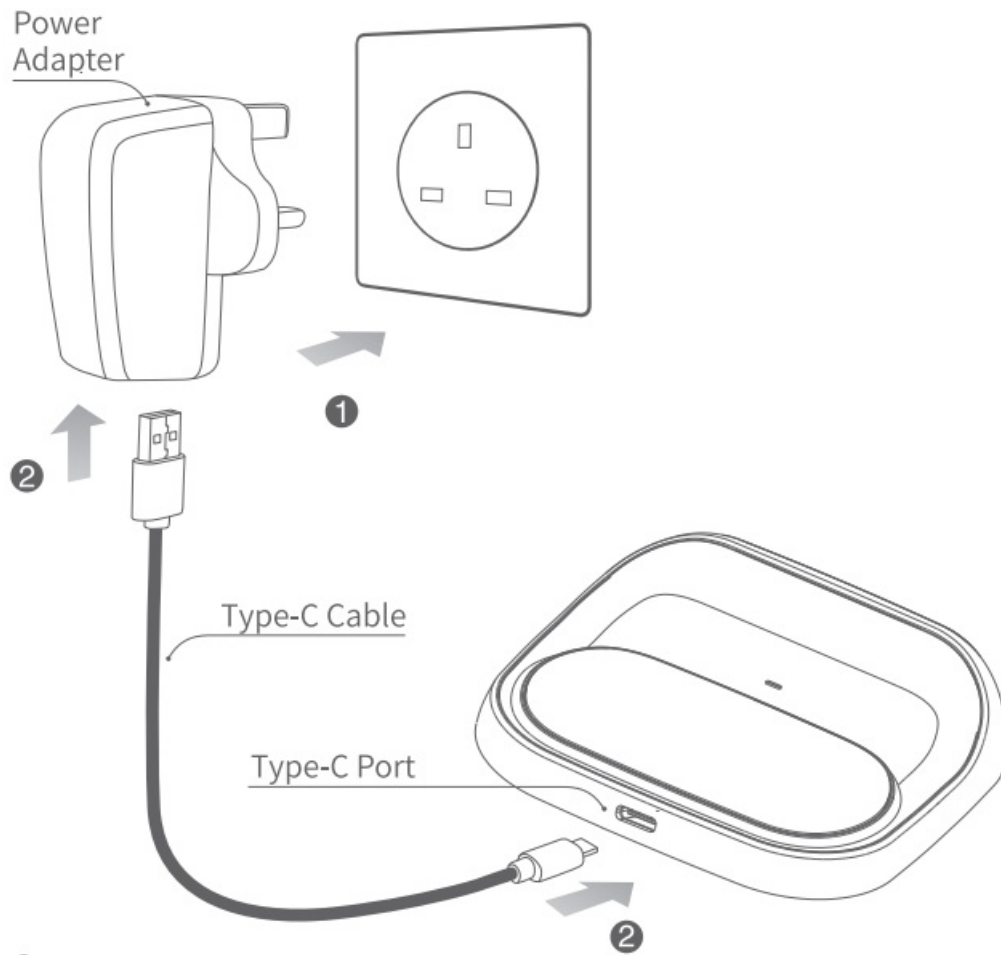
Please read this manual carefully and keep it properly for reference before using the Alarm Clock Wireless Charger.



Contents

- [1 Connect to Power Adapter](#)
- [2 Usage of Alarm Clock](#)
- [3 Charge the phone wirelessly](#)
- [4 FCC Warning](#)
- [5 FCC RF exposure statement:](#)
- [6 Specification](#)
- [7 Documents / Resources](#)
- [8 Related Posts](#)

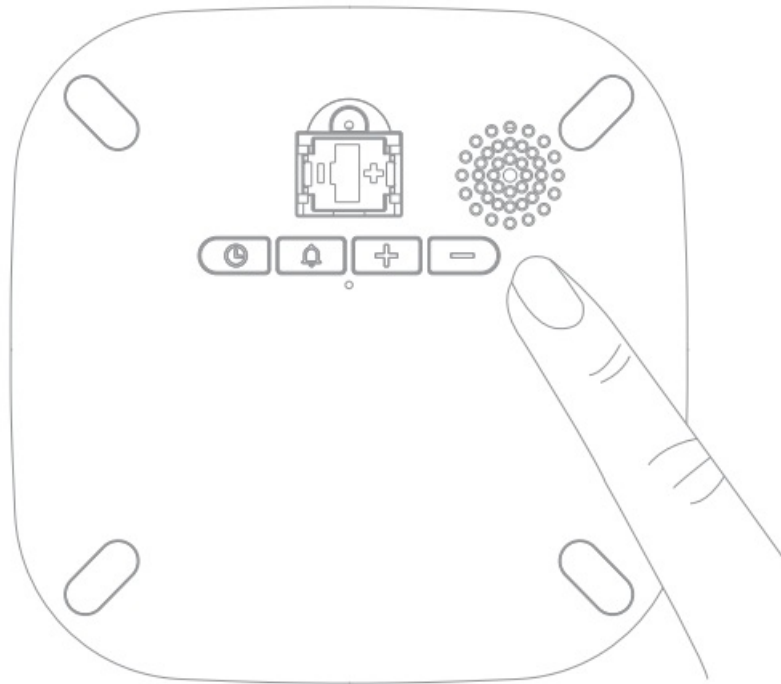
Connect to Power Adapter



1. Connect the power adapter to the socket.
2. Connect the adapter to the Type-C interface, the other Type-C to pad.

Note: This product works with Type-C to Type-C charging cable. Only QC 2.0 or QC3.0 standard power adapter supports this product's quick charge function. You need to buy a power adapter separately. Type-(to Type-C charging cable and power adapter need to buy separately.

Usage of Alarm Clock



Clock key: short press this button to view the date, time, long press 1 seconds 12/24 h/year/month/day/time
Corresponding flicker and then press + / – 12/24 set h/year/month/day/time.

Alarm key: short press time, see have set a good alarm clock, long press 1 seconds to enter the alarm Settings State, enter the alarm state and then press the alarm can be set up three groups of alarm.

Each alarm can be set separately.

+ button: time/year/month/day

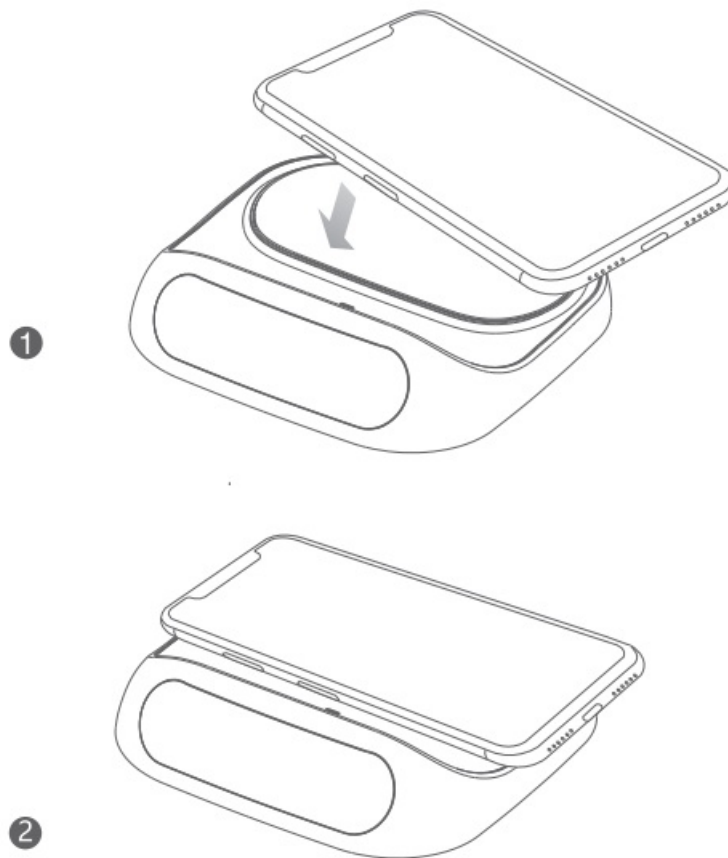
– key: time/year/month/day

Reset button: restore to The original state.

After the alarm clock rang, tap the product shell, enter a state of “sleep”, displays on the right side of the alarm icon are flashing, the interval of five minutes, the alarm sounded again, five times to sleep. If you need to shut the alarm, press the “alarm” button, the alarm icon still, waiting for the next cycle.

- The machine should be installed button battery to save Settings time, button batteries need to purchase.

Charge the phone wirelessly



1. Make sure the wireless charger dock connects to the power supply.
2. Put the Qi-enabled smartphone properly on the transmitter and starts recharging.

FCC Warning

This device complies with part 15 of the FCC Rules. Operation is subject to the following two conditions:(1) This device may not cause harmful interference, and (2) this device must accept any interference received, including interference that may cause undesired operation.

Any Changes or modifications not expressly approved by the party responsible for compliance could void the user's authority to operate the equipment. This equipment has been tested and found to comply with the limits for a Class B digital device, pursuant to part 15 of the FCC Rules. These limits are designed to provide reasonable protection against harmful interference in a residential installation. This equipment generates uses and can radiate radio frequency energy and, if not installed and used in accordance with the instructions, may cause harmful interference to radio communications. However, there is no guarantee that interference will not occur in a particular installation. If this equipment does cause harmful interference to radio or television reception, which can be determined by turning the equipment off and on, the user is encouraged to try to correct the interference by one or more of the following measures:

- Reorient or relocate the receiving antenna.
- Increase the separation between the equipment and receiver.
- Connect the equipment into an outlet on a circuit different from that to which the receiver is connected.
- Consult the dealer or an experienced radio/TV technician for help.

FCC RF exposure statement:

The equipment complies with FCC radiation exposure limits set forth for an uncontrolled environment. During the operation of the device, a distance of 15 cm surrounding the device and 20 cm above the top surface of the device must be respected.

Specification

Input: DC5V/2A,DC9V/1.67A,DC12V/1.5A
Output: 5W/7.5W/10W/15W
Frequency: 115-205KHZ
Dimensions: 115×115×30mm
Charging distance: ≤10mm
Conversion: ≥72%
NW.: 100g

Documents / Resources

	<p>Shenzhen Powerqi Technology LC01 Alarm Clock Wireless Charger [pdf] User Manual LC03, 2AFP2LC03, LC01 Alarm Clock Wireless Charger, Alarm Clock Wireless Charger, Wirele ss Charger, Charger</p>
---	---