

# Shenzhen Nanxin Technology SK26 Smart Star Projector User Manual

[Home](#) » [Shenzhen Nanxin Technology](#) » Shenzhen Nanxin Technology SK26 Smart Star Projector User Manual

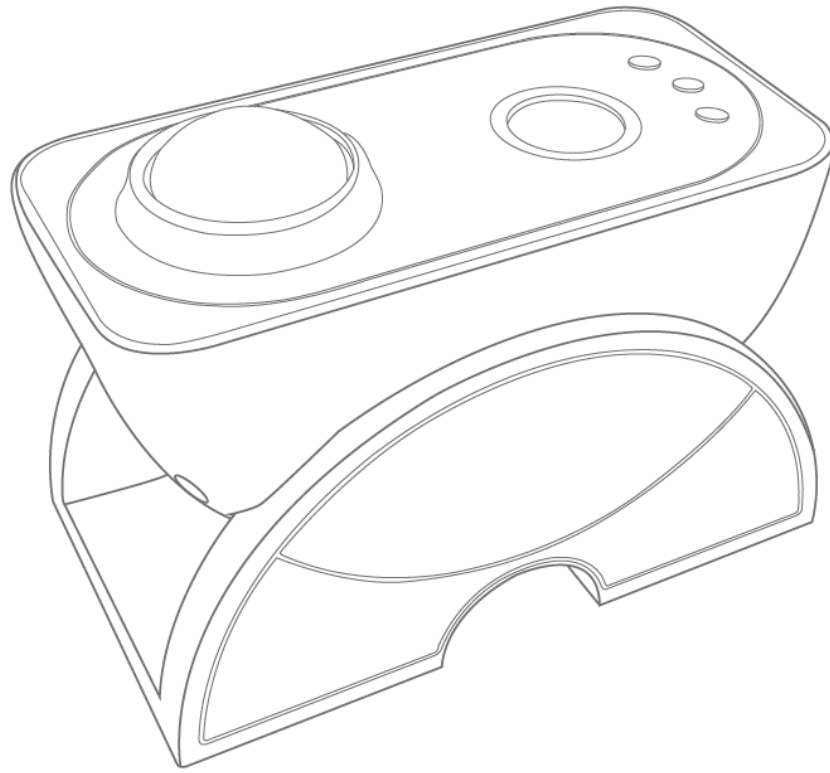


## Contents

- [1 Shenzhen Nanxin Technology SK26 Smart Star Projector](#)
- [2 NOTICE](#)
- [3 INTRODUCTION](#)
- [4 SPECIFICATION](#)
- [5 PARTS LIST](#)
- [6 BEFORE USE](#)
- [7 How to begin?](#)
- [8 Quick Mode Configuration](#)
- [9 How to connect Smart Star Projector to Amazon Alexa.](#)
- [10 How to connect Smart star projector to Google Home](#)
- [11 FAQ](#)
- [12 FCC Statement](#)
- [13 Documents / Resources](#)
- [14 Related Posts](#)

Shenzhen

Shenzhen Nanxin Technology SK26 Smart Star Projector



## NOTICE

- Please keep the product away from open flames.
- Please keep away from water to avoid damage.
- Please keep out of reach of children. Children may use it under adult supervision.
- Please cut off power supply if a hazard occurs
- Please use the product in line with instructions.
- Do not look directly at the laser to avoid damaging your eyes.
- Do not point the light into the sky within 10 nautical miles(18.5km) of an airport.
- Do not disassemble and assemble it by yourself.
- For indoor use only.(Works better in a dark environment)

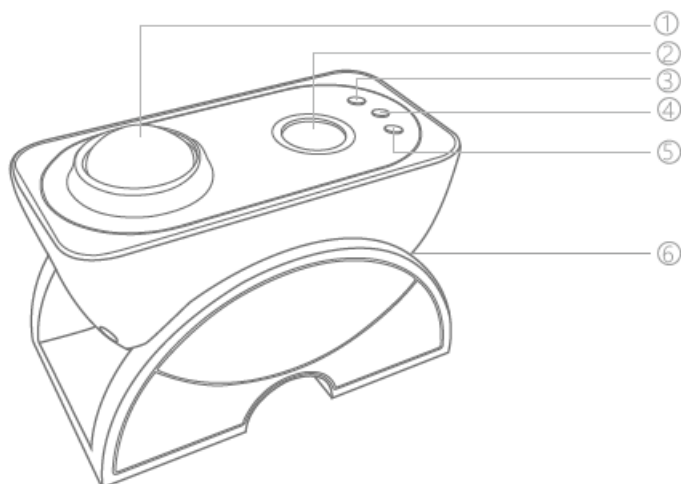
## INTRODUCTION

The smart star projector is an entertaining electronic device and able to project the starry sky on your ceiling with floating clouds that have a lot of changeable colors, with thousands of stars filling the ceiling, it will give you the best visual experience of milky way and Nebula without having to step one foot Outside of your room. Applying to multiple and create a romantic and dreamy atmosphere easily. sleep under the stars and enjoy the starry sky that now belongs to you. We hope you have a great experience with this incredible product.

## SPECIFICATION

Power Input	5V 1A
Classification of lasers	Class 1
Work Temperature	14~104°F(-10~40°C)
Wireless Type	WiFi 2.4G 1T1R
Laser color	Green,515-520nm/Blue,450nm
Nebula color	Colorful,450nm
Shell Material	Flame Retarding V0 Class ABS+PC
Application	Indoor(Home/Cafe/Bar/motor homes)
Certificate	FDA,FCC,CE,ROHS
Control by	Amazon Alexa, Google Home, Smart Life APP
Timing	Flexible timing
Dimensions(cm)	16.0L*9.0W*11.9H
Net Weight	0.5KG
Power cord length	1.8m

## PARTS LIST



1. O LED light
2. Starry light
3. Scene switch button
4. Switch button
5. Music button
6. MIC

### Button function:

Switch button: Turn on/off.

Music button: By short pressing the button, you can switch six kind of music modes.

Scene switch button: Press the first time: Blue light +Stars breathing blinking.

Press the second time: Nebula color + Stars breathing flashing.

Press the third time: Nebula color + Stars always on.

Press the fourth time: Nebula color.

Press the fifth time: Stars breathing flashing (Turn off for 5 seconds before starting).

Press the sixth time: Blue light + Stars always on.

#### **Note:**

1. The breathing and flashing period of the stars is 10 seconds.
2. Since the button has power-off memory function, when you use the switch button to turn off the device and then turn on the device again, it will return to the last state before turning it off.
3. Please wait 3-5 seconds to press the button after the device is powered on.

#### **BEFORE USE**

- Inside packaging:
- Smart star projector X1po
- User Manual X1pc
- Accessory X1 set

#### **How to begin?**

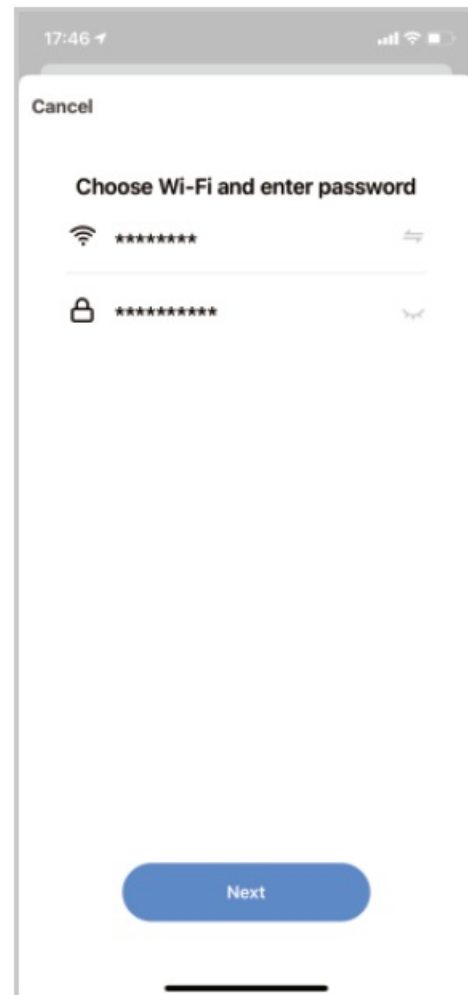
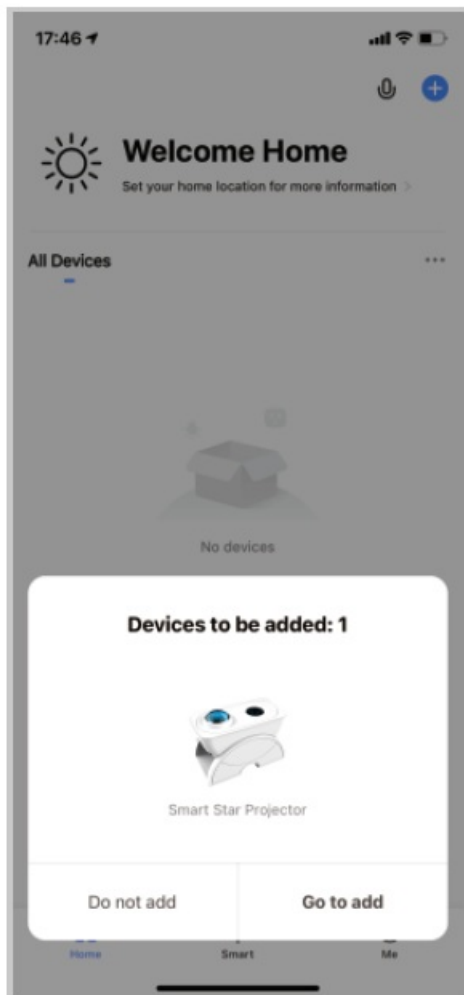
1. Connect the power supply into an available standard electrical outlet.
2. Connect to WIFI.

#### **How to connect to Wi-Fi network?**

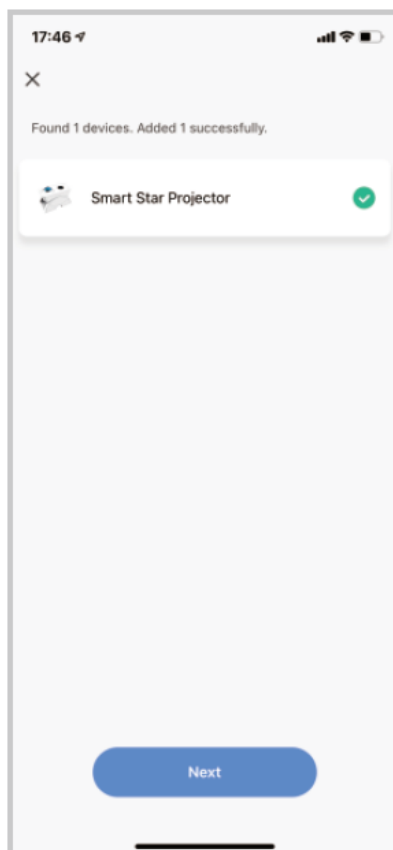
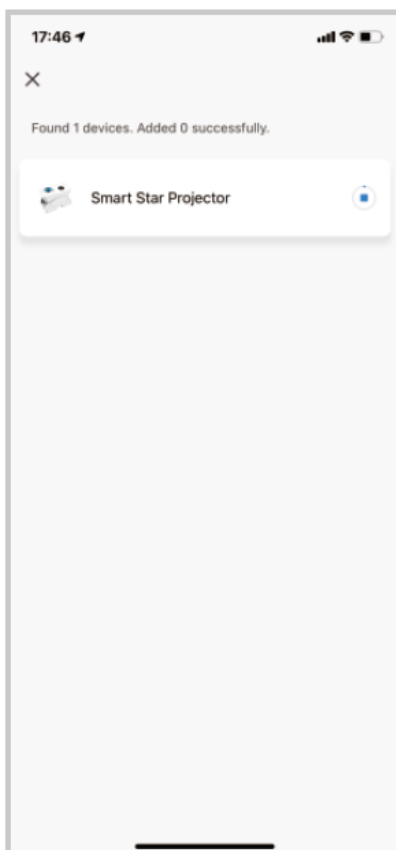
1. Download Smart Life from App Store and the or ANDROID Google Play or scan the QR code and install the Smart Life App for either iOS or Android. Once downloaded, the app will ask you to register your device. Enter your phone number or email which one makes you feel comfortable and select the country you live in. If use phone you will receive a text with a registration code. If you choose email you will then create a password.

#### **Bluetooth Mode Configuration (Common)**

1. Turn on your phone's Bluetooth, press and hold the switch button on the Smart Star Projector for 5 seconds until the projector light blinks red rapidly. Enter the add device interface. It automatically says "Devices to be added" then press "Go to add".

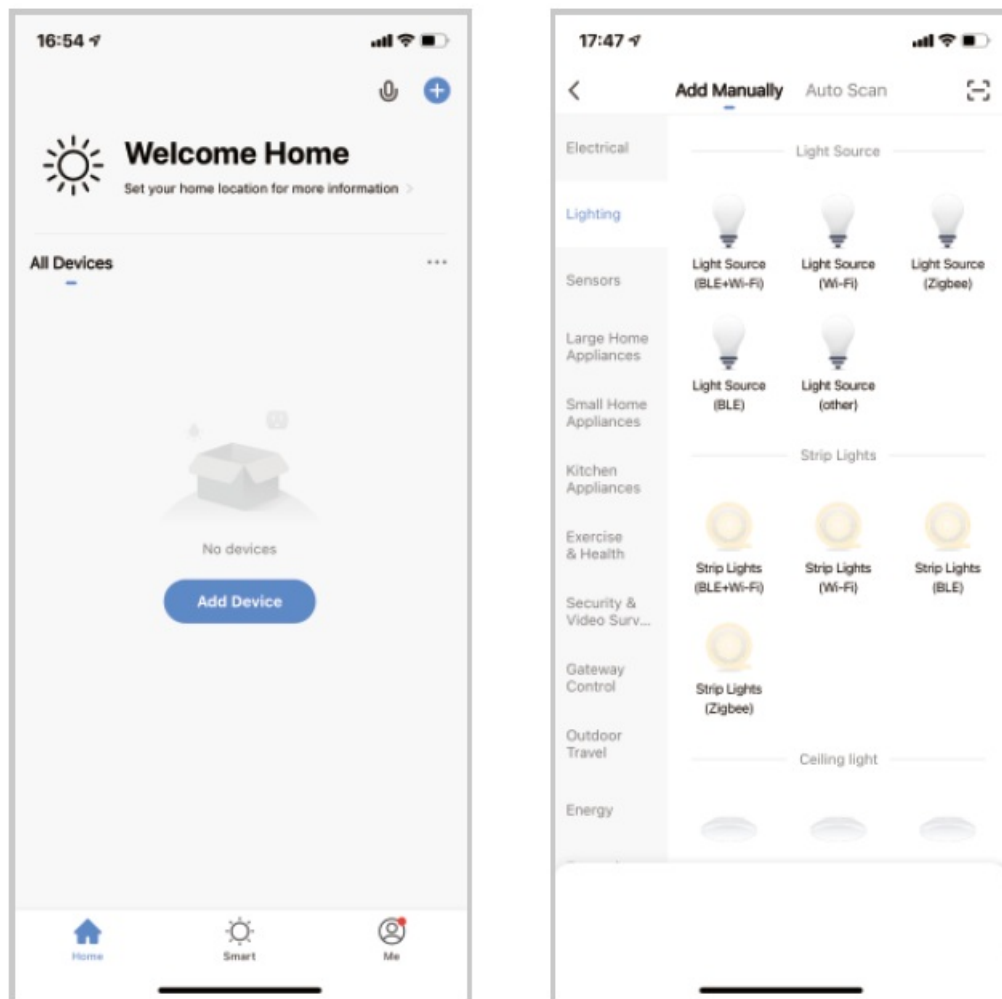


2. Enter your Wi-Fi Password and press “Next” to add device
3. Once connected, the App will prompt the to connect press Done”



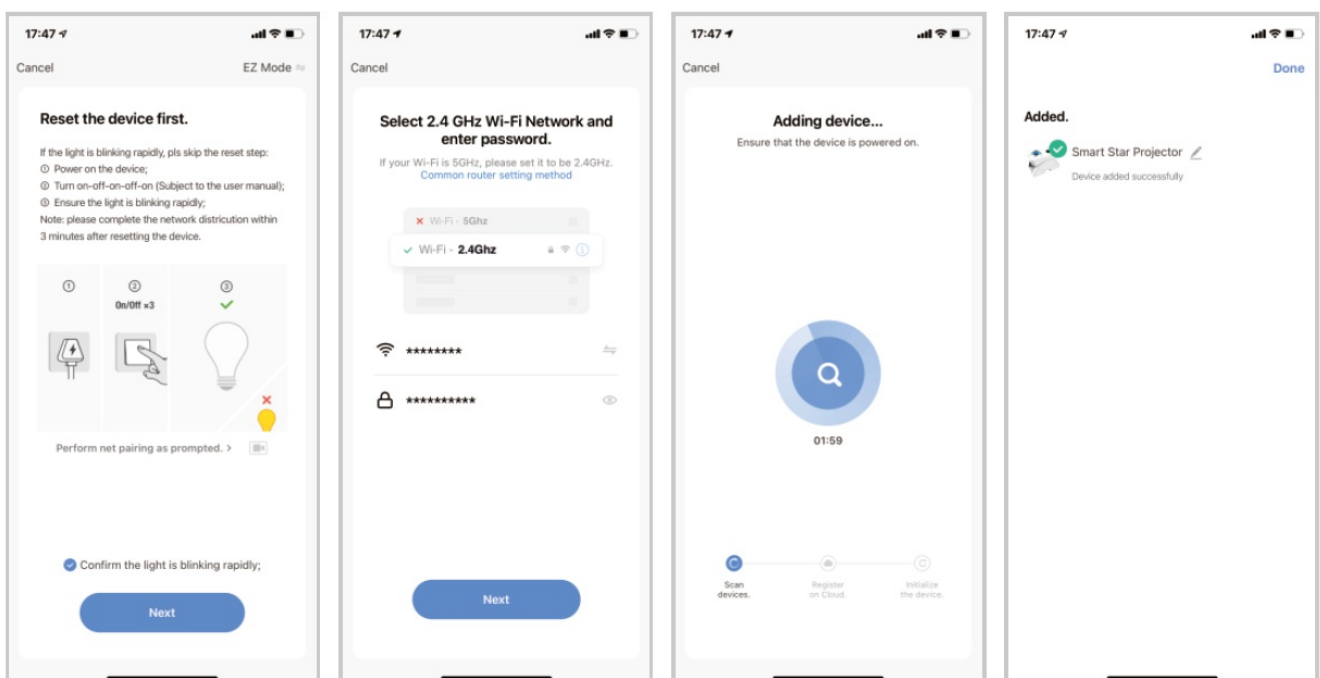
## Quick Mode Configuration

1. Make sure quick mode configuration is initiated: The projector light blinks red rapidly( twice per second). If it blink red (once every 3 seconds), press and hold the power button on the Smart Star Projector for 5 seconds until the projector light blinks rapidly.
2. Tap the icon”+” on the top right, choose any device type and enter into “Add Manually”.



**Please remember to choose the fast blinking**

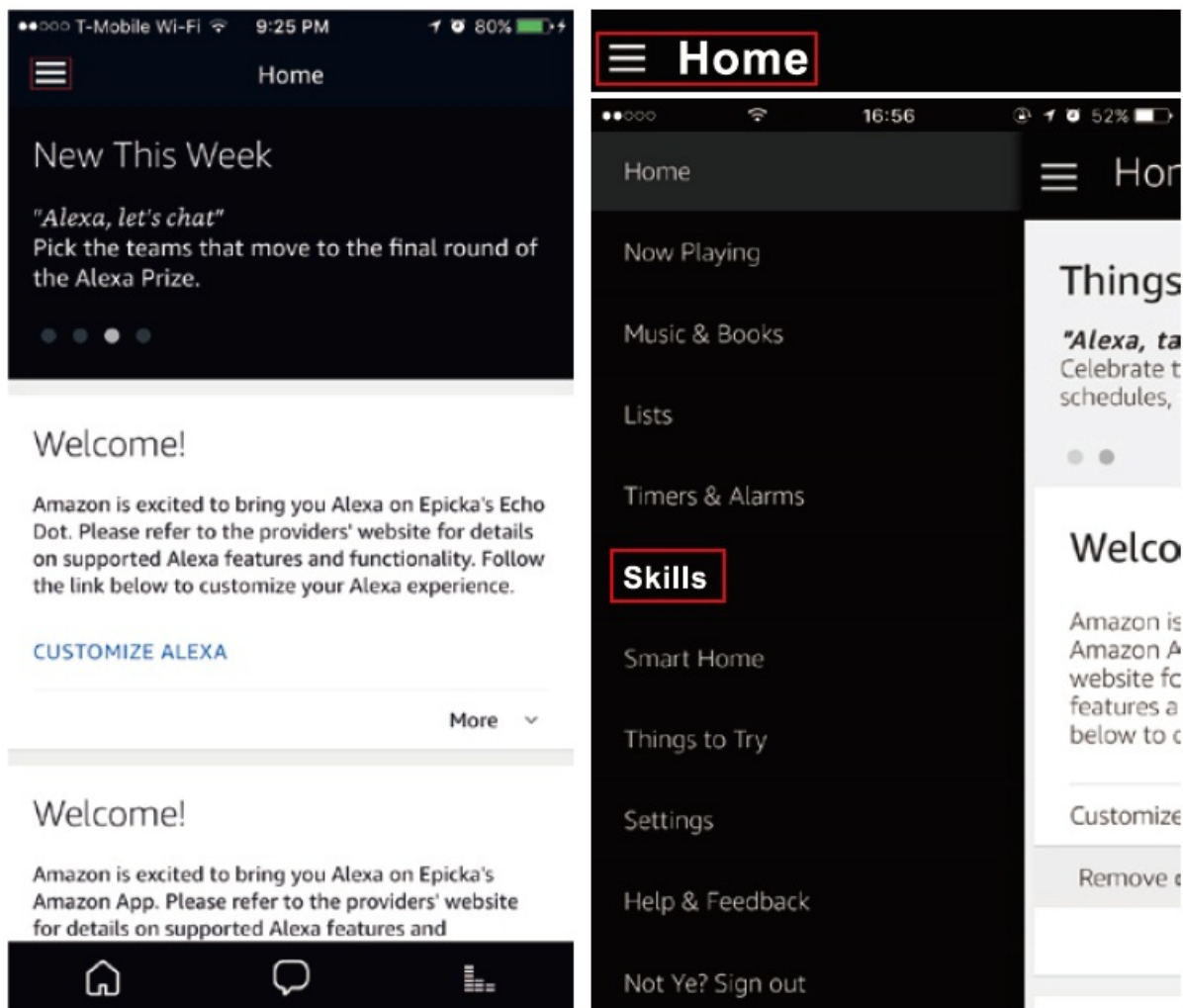
- Follow the In-app instructions to connect the Smart Star Projector to your WI-FI network.



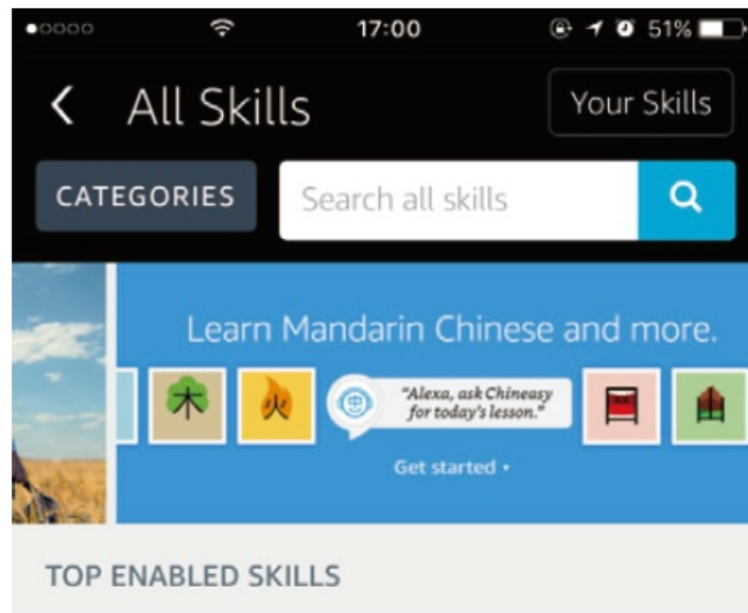
- Once connected, the App will prompt you to connect. Press “Done”
- Now you can control Smart Star Projector through Smart Life APP
- Once the configuration has been completed Successfully, the indicator light will turn solid and the device will be added to the “Device List”

## How to connect Smart Star Projector to Amazon Alexa.

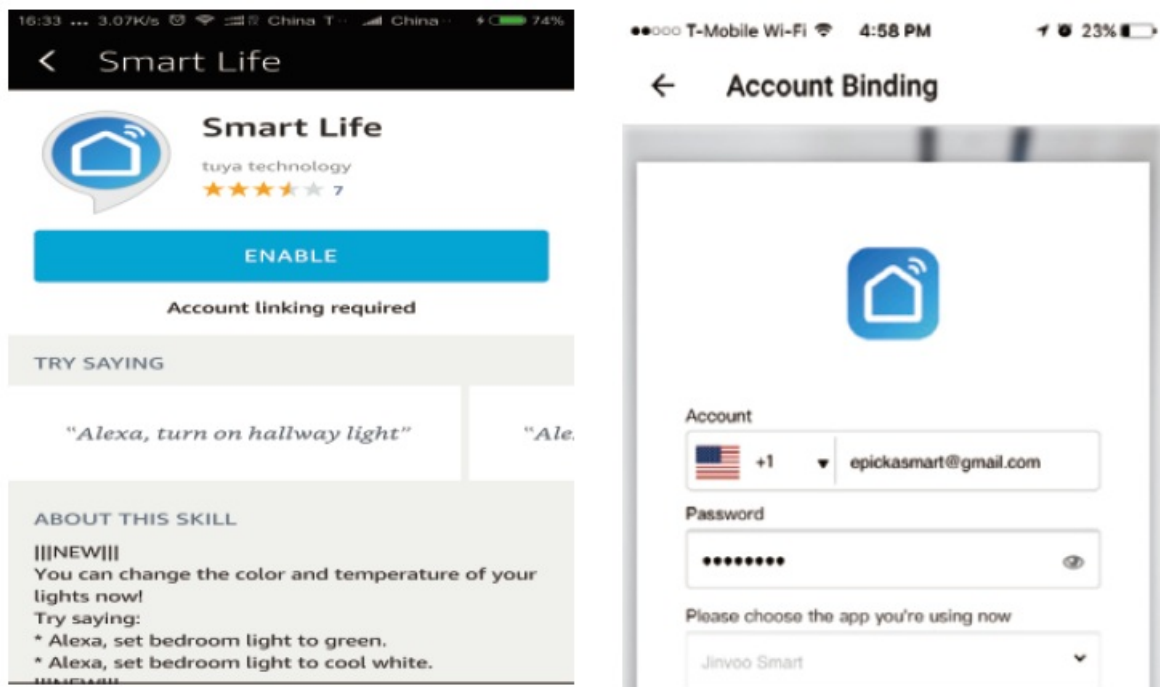
1. Launch Smart Life App, sign into your account and make Sure Smart star projector is on the device list.
2. Minimize Smart Life App, then launch the Alexa App and sign in your Alexa account and make sure you have at least one Alexa smart speaker-controlled device installed like Echo dot, etc.
3. In the upper left corner of Home page, press the button to show APP Menu. Then select Skills in the menu.



4. Type in “Smart Life “in the search and press the search button next to it.

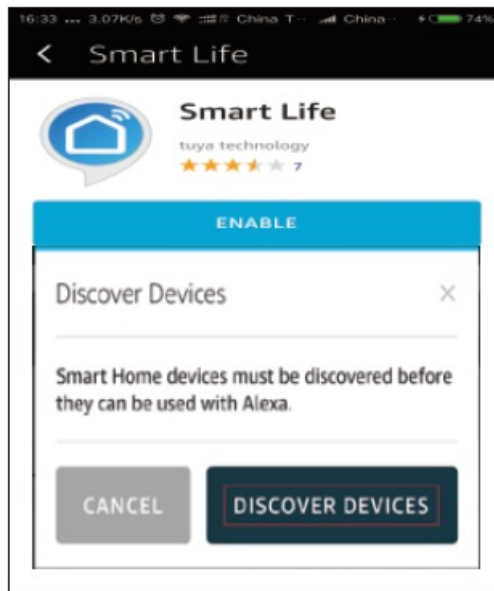


5. Enable Smart Life Smart Skill then sign in your Smart Life account to complete your account set up

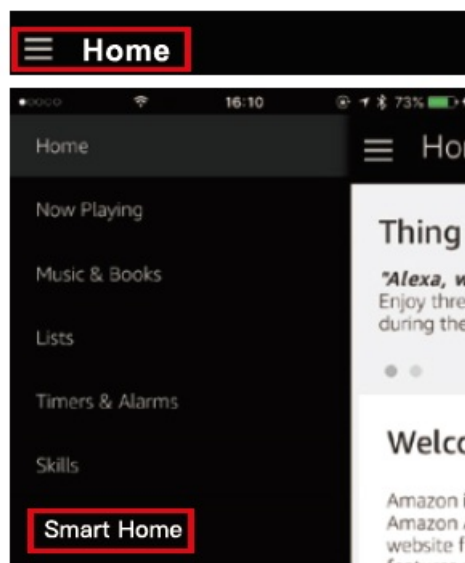


6. Once your account has been successfully linked, ask Alexa to discover devices. After a 20-second searching, Alexa will show all the available devices

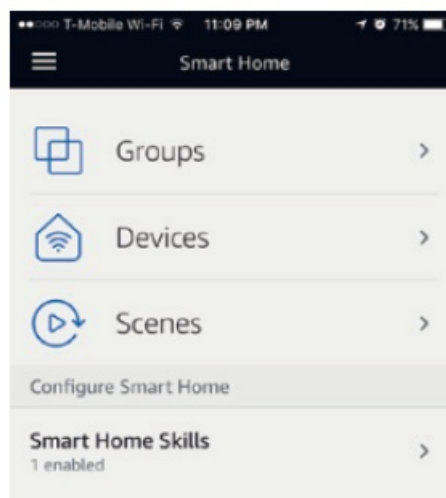




7. Go back to Menu by pressing button, and then press Smart Home button.



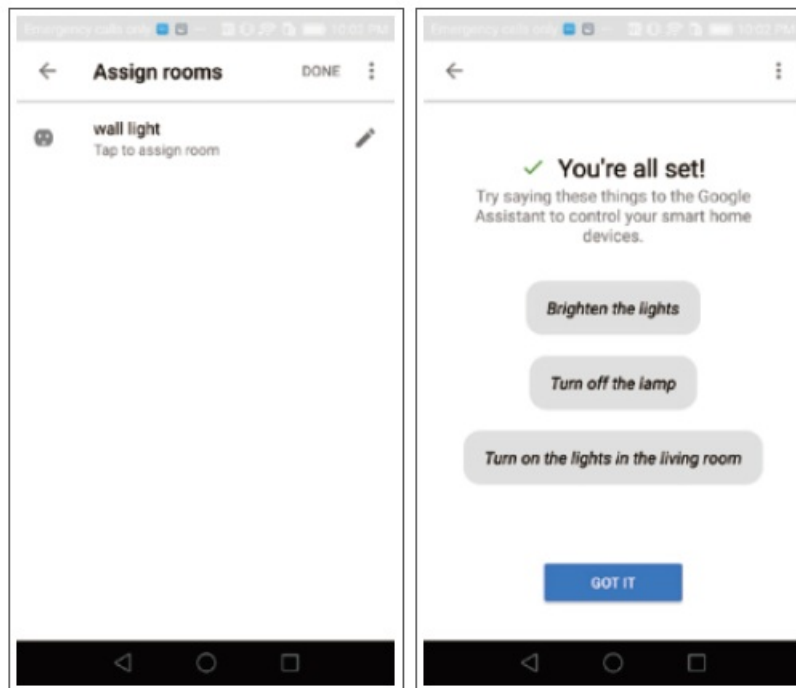
8. In the Smart Home page, you can group your devices in different categories. Your Smart Life APP has now been paired with Alexa. Now you can control your Smart star projector through Alexa.



## How to connect Smart star projector to Google Home

1. Launch the Google Home App and make sure Google Home speaker is installed. If not, please follow Google Home speaker installation instruction to complete the installation.

2. Once Google Home is installed, in the upper left corner of App Home page, PressingE button to show App menu. Then press “Home Control”in the menu.
3. After successfully linking your account, in the Google Home App you can see all your smart devices from your Smart Life App account. You can assign rooms for each device.
4. Now you can use Google Home to control your smart device, you can say like.



## FAQ

- **What should I do if I can't turn off or turn on the Smart Star Projector?**

Make sure your cellphone and the Smart Star Projector are connected to the same WiFi connection.

- **What should I do when the configuration fails?**

Make sure to connect your Smart Star Projector within a short distance of your internet router. Check whether the available internet network has a frequency of 2.4GHz; Check your internet connection is working properly.

- **How can I share devices with my family members?**

Open the Smart Life APP, select “profile”>”Devices Sharing Sent select “Add Sharing”, now you can share with your family members.

- **Can this APP be used on any type of mobile phone? Can I control the device from a distance?**

Yes, the APP can work with both android & IOS systems. Once connected to the Internet, there is no distance limitation.

- **Can I control the devices with a 2G/3G/4G connection?**

The Smart Star Projector devices must be registered first on a WiFi network, after you have successfully connected it, then the Smart Star Projector can be controlled by your Smart Phone with 2G/3G/4G networks.

- **Will it cause a fire or other safety hazards if kept on all night ?**

No, it will be safe to use all night.

- **Can I adjust the brightness on this?**

Yes, you can adjust the brightness on the APP

- **Is the indirect laser light damaging to eyesight?**

Yes, please do not look directly into the laser.

- If projected on a ceiling, what is greatest width and height of the projected image?

That depends on the height of the object you place it on.


## FCC Statement

Changes or modifications not expressly approved by the party responsible for compliance could void the user's authority to operate the equipment. This equipment has been tested and found to comply with the limits for a Class B digital device, pursuant to Part 15 of the FCC Rules. These limits are designed to provide reasonable protection against harmful interference in a residential installation. This equipment generates uses and can radiate radio frequency energy and, if not installed and used in accordance with the instructions, may cause harmful interference to radio communications. However, there is no guarantee that interference will not occur in a particular installation. If this equipment does cause harmful interference to radio or television reception, which can be determined by turning the equipment off and on, the user is encouraged to try to correct the interference by one or more of the following measures:

- Reorient or relocate the receiving antenna.
- Increase the separation between the equipment and receiver.
- Connect the equipment into an outlet on a circuit different from that to which the receiver is connected.
- Consult the dealer or an experienced radio/TV technician for help.

This device complies with part 15 of the FCC rules. Operation is subject to the following two conditions: (1) this device may not cause harmful interference, and (2) this device must accept any interference received, including interference that may cause undesired operation. This equipment complies with FCC radiation exposure limits set forth for an uncontrolled environment. This equipment should be installed and operated with minimum distance 20cm between the radiator & your body.

## Documents / Resources

	<p><a href="#">Shenzhen Nanxin Technology SK26 Smart Star Projector</a> [pdf] User Manual SK26, 2A5ET-SK26, 2A5ETSK26, SK26 Smart Star Projector, SK26, Smart Star Projector</p>
---	--