



Shenzhen Manridy Technology MF6 Smart Watch User Manual

[Home](#) » [Shenzhen Manridy Technology](#) » Shenzhen Manridy Technology MF6 Smart Watch User Manual 

Contents

- 1 Shenzhen Manridy Technology MF6 Smart Watch
- 2 Product Designs
- 3 Watch charge
- 4 Earphone charge
- 5 System setting
- 6 Download and install application
- 7 Device Bind
- 8 Operating instructions
- 9 Feature instructions-Main feature
- 10 Feature instructions-Down glide list
- 11 Feature – instructions- Down glide list – Setting
- 12 Feature instructions-Quick menu
- 13 APP
- 14 Earphone feature
 - 14.1 Connect the phone
 - 14.2 Touch feature
 - 14.3 Earphone notice
- 15 FQA
- 16 FCC STATEMENT :
- 17 Documents / Resources
- 18 Related Posts

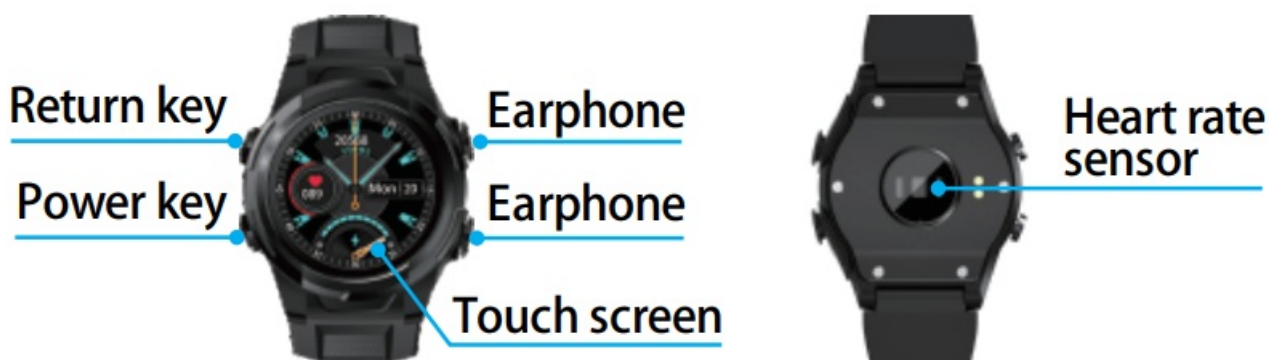


SHENZHEN

Shenzhen Manridy Technology MF6 Smart Watch

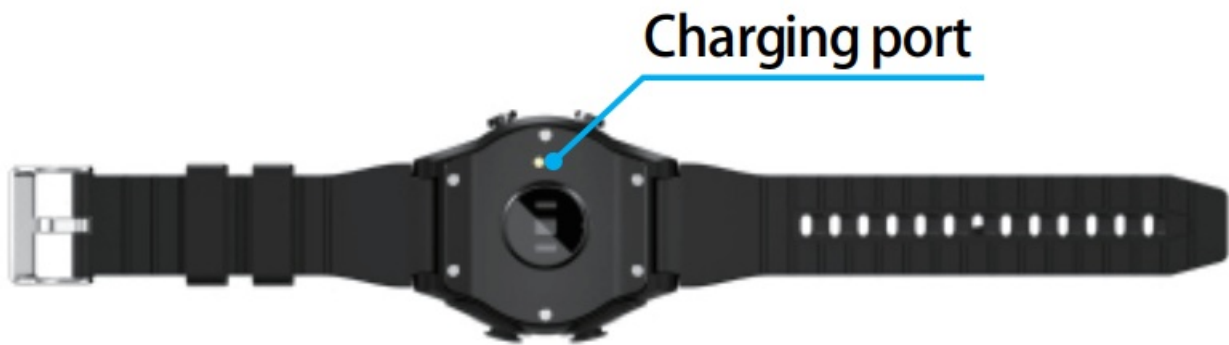


Product Designs



Watch charge

Before using the product for the first time, please charge the watch for more than 2 hours. (The input voltage of the device is 5.0V. Do not use any other power source to charge the device)



Earphone charge



Picture 1



Picture 2

Put your earphone (picture 1) on side charge slot (picture 2), The red light on indicates that the battery is charging, the red light goes out after full power.

Note: To prevent the earphones from falling off, you can adjust the wearing direction of the watch and customize the watch screen display orientation by tap "setting" as you like.

System setting



Android 8.0+



iOS9.0+

BLE

Bluetooth 4.0+

You can use all the functions when your watch connected APP, please confirm your phone system version satisfy the following conditions.

Download and install application

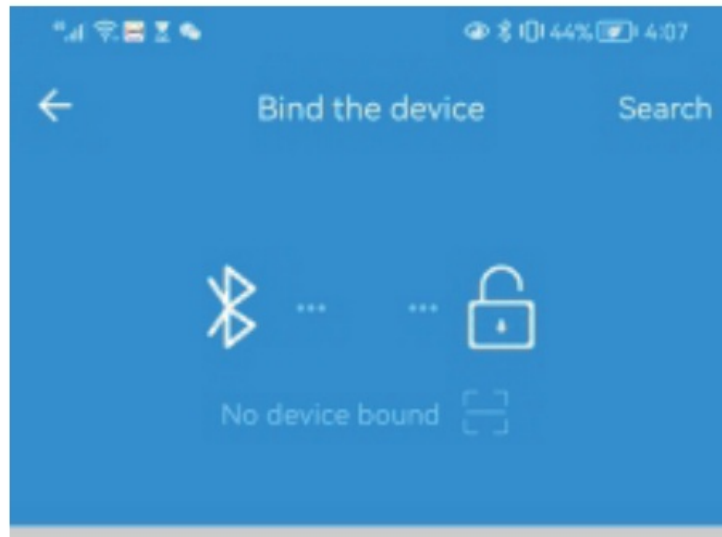


1. Scan the QR code above and download APP.
2. Can also search “iband” and download from application market.
3. Can also scan QR code and download APP from watch.

Device Bind

- Method 1: Search device and bind it.

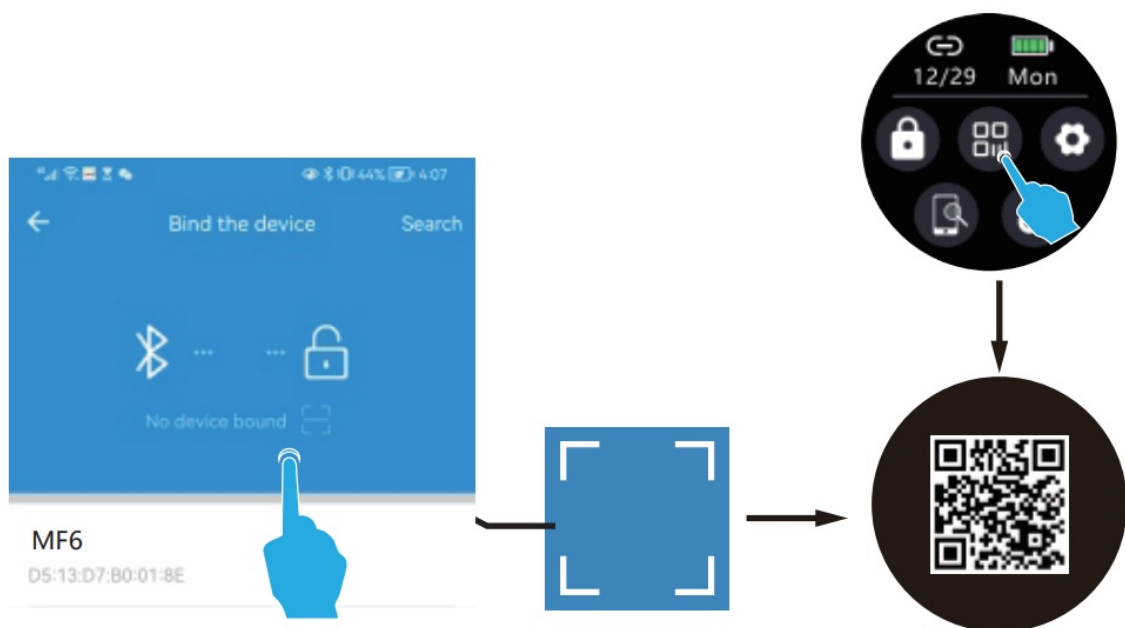
Open APP search device on the “Bind device” interface and tap bind.



MF6

D5:13:D7:B0:01:8E

- Method 2: Scan QR code bind
 1. Open QR code on watch shortcut menu
 2. Open iband “device bind” tap QR code
 3. Scan QR code and then bind.



Operating instructions

Startup: long press side button about two seconds when the device shutdown
Shutdown: long press side button about two seconds when the device working



Feature instructions-Main feature

Watch face

- 1.You can fast switch watch face when you long press this interface.
- 2.Shake your hand to show this interface when the screen shutdown.

Information

- 1.You can check unread message on this interface,
- 2.You should open notific ations in APP (on mobile phone) to use.

Pedometer

To counts the number of steps you have taken for current time, heart rate and measures the distance traveled on this interface.

Heart rate

You can measure your heart rate on this interface, please turn on the timed measurement function in the APP and set the interval of automatic measurement. (Turning on the automatic test will consume high power)

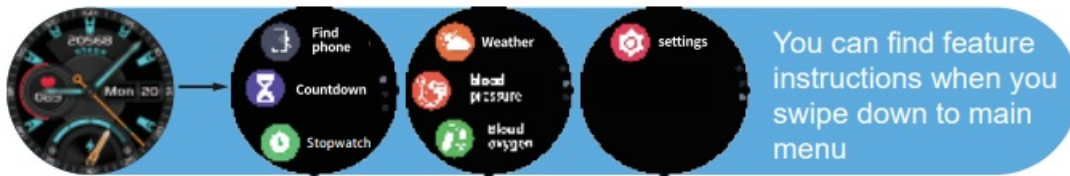
Sleep monitor

You can check your sleep data of last night on this interface.

Exercise

Please tap this interface to sub-menu,you can choose diff erent exercise sport mode.

Feature instructions-Down glide list



Search phone

In the case of bluetooth connection, tap this icon to search your phone, it will vibrate or ring a bell.

Countdown

You can choose predetermined time or customized time.

Stopwatch

You can start, pause, count, reset and view records.

Weather

You can check weather in last three days, please connect APP to update in time, APP automatic data update.

Blood pressure

You can test your blood pressure automatically when you stay on this interface for two seconds, long press stop and test again if you long press again.

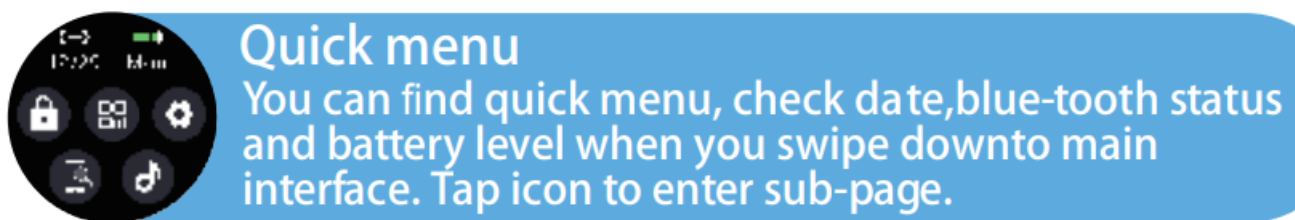
Blood oxygen

You can test your blood oxygen automatically when you stay on this interface for two seconds, long press stop and test again if you long press again.

Setting

Tap and enter secondary page, you can operate more functions.

Feature – instructions- Down glide list – Setting



Product Information

Check watch hardware information: mode; ID; hardware version; MAC etc.

APP download

Scan QR code to download APP.

Bind APP

Open: "iband" to scan QR code on this interface you can quickly bind device.

Change the watch face

To glide left or right change different preset watch face, click on and select it.

Brightness adjustment

Tap '+' / '-' icon to adjust screen brightness.

Notification text

You can adjust notification text size for convenient reading.

Delete Date

Delete all the data in the device, it will rest default language after delete data.

Restart device

The device shutdown and restart again.

Shutdown

You can shutdown tap this icon, can also long press side button.

Feature instructions-Quick menu**Quick menu**

You can find quick menu, check date,blue-tooth status and battery level when you swipe down to main interface. Tap icon to enter sub-page.

Lock screen

To prevent mistakenly touch, you can lock screen at main interface by this icon and long press side button to unlock.

QR code

You can get QR code quickly and blind QR code by this icon.(This QR code does not display if the device connection)

Search phone

In the case of blue-tooth connection, tap this icon to search yourphone, it will vibrate or ring a bell.

Music control

You can control your phone music by this icon: play,pause,control the volume, previous song , next song. (this is not working if blue-tooth disconnection)

Setting

This is the quick icon to setting, as above " Function instructions swipe down to menu-setting"

APP

You can set more functions after open APP.

Sedentary remind

You can set reminder of intervals and do not disturb times.

Photo

You can use APP control your phone take a photo by this icon.

Alarm

You can set up many alarm in APP and support to edit text alarm.

Anti-lost reminder

The watch will vibrate when the Bluetooth is disconnected for a period of time. (This Feature is turned off by default)

Search watch

In the case of Bluetooth connection, you can search your watch by APP, your watch will flash screen or vibrate.

Phone Notification

You can turn on the phone notification in the APP, the watch will display the contacts when the call comes. You can hang up or mute your phone.

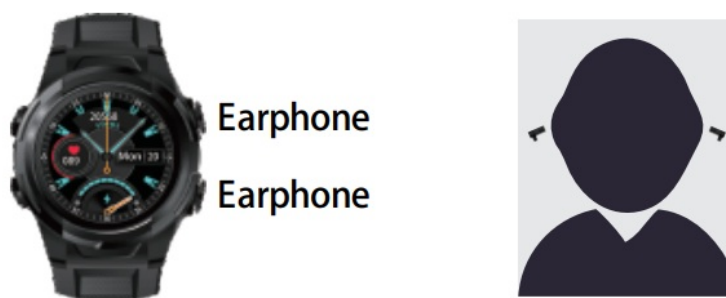
Customize the watch face

Customize to select a picture in your phone or take a photo to display on the watch face, and adjust the content and location of the display.

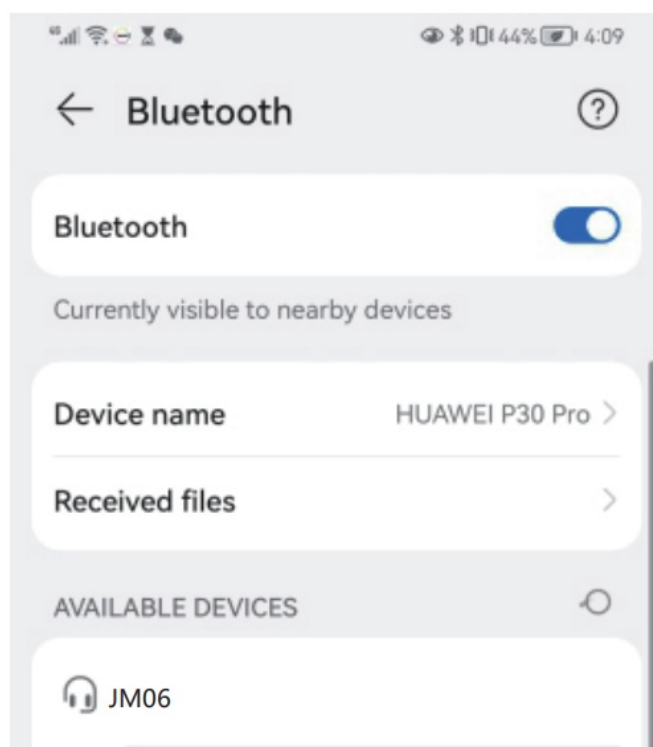
Earphone feature

Connect the phone

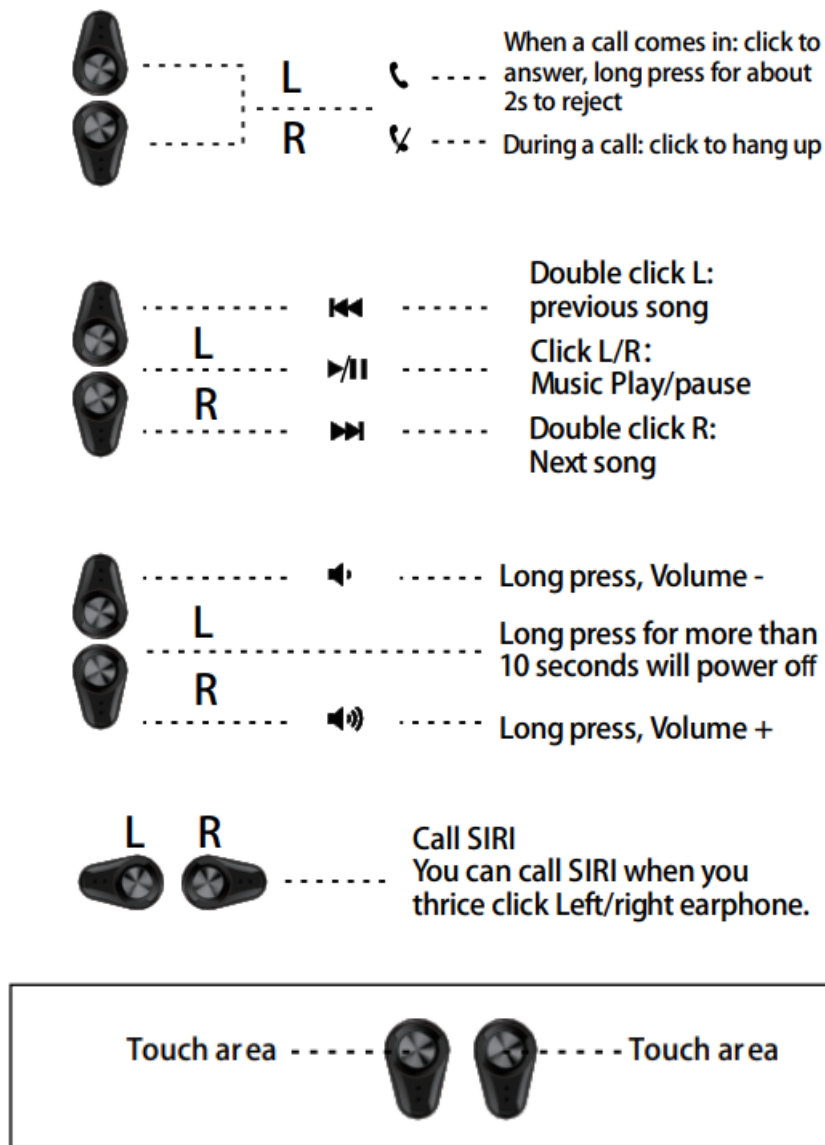
1. Take earphones out from the watch and wear in ears.



2. Open your phone blue-tooth and pair blue-tooth name "JM06", the earphones red and blue light will quick flash three times after earphones paired success.



Touch feature



Earphone notice

Power on

Take the earphones out of charging case, it will power on automatically. 2. When the earphones are turned off, touch the touch area for about 1.5 seconds to turn on.

Power off

1. Long press the touch area for 5 seconds to shut down.
2. The earphone will automatically shut down if the Bluetooth is disconnected for 5 minutes.
3. The earphone will automatically shut down when the earphone battery voltage drops to 3.2V.
4. After the earphone is put into the charging box, it will automatic turn off and charge, and the red light will go out when it is full. Phone pairing:
 1. Single ear pairing and use: Turn on the phone's Bluetooth to se for the device name: JM06, click the device name to enter Bluetooth connection and pair successfully.
 2. Turn on the left and right earphones to automatically pair TWS. When the pairing in TWS mode is successful, turn on phone's Bluetooth to search for the device name: JM06, click device name to enter the Bluetooth connection and pair successfully Re-connected:

After the earphone is taken out of the charging case, it automatically connect back to the last connected device. If the mobile phone is not connected within 15S, it will automatically enter the pairing state. At this time, the new mobile phone can search for it and click to connect to Bluetooth. If there is still no mobile phone connect in the second minute, it will automatically shut down. Low battery: the red light flashes slowly (flash every 10S), there "Battery low" voice prompt (the voice prompts every 2 minutes)

FQA

iPhone can not search the device, QR code does not display

1. Phone—Setting—Bluetooth—My device— Select a paired watch from the pairing list: Ignore this device.
2. Re-blind

Android phone cannot search for the earphone, or cannot reconnect after the Bluetooth is disconnected.

1. Please make sure "location information" is turn on in the system.(some of android system phone search blue-tooth device should turn on this feature)
2. Disconnect device/re-blind it after turn on your blue-tooth

Phone/Message/Notification function unusual

1. iPhone: Please make sure the watch is paired with the phone, then turn off notification, turn it back on. Or restart your phone's blue-tooth.
2. Android:Open "iband"—Setting—About—Help; Check that the corresponding function is enabled.

❖ **Notice:** Your watch couldn't get notification if your phone and your laptop open APP in the same time or your phone turn off notify the authority of APP.

❖ **Notes:** Press and hold the two buttons at the same time and then charge, you can restart the device and reset the system forcibly .

FCC STATEMENT :

This device complies with Part 15 of the FCC Rules. Operation is subject to the following two conditions:

1. This device may not cause harmful interference.
2. This device must accept any interference received, including interference that may cause undesired operation.

Warning: Changes or modifications not expressly approved by the party responsible for compliance could void the user's authority to operate the equipment.

NOTE: This equipment has been tested and found to comply with the limits for a Class B digital device, pursuant to Part 15 of the FCC Rules. These limits are designed to provide reasonable protection against harmful interference in a residential installation. This equipment generates uses and can radiate radio frequency energy and, if not installed and used in accordance with the instructions, may cause harmful interference to radio communications. However, there is no guarantee that interference will not occur in a particular installation. If this equipment does cause harmful interference to radio or television reception, which can be determined by turning the equipment off and on, the user is encouraged to try to correct the interference by one or more of the following measures: Reorient or relocate the receiving antenna.

Increase the separation between the equipment and receiver. Connect the equipment into an outlet on a circuit different from that to which the receiver is connected.

Consult the dealer or an experienced radio/TV technician for help.

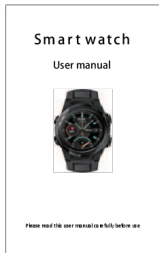
RF warning statement:

The device has been evaluated to meet general RF exposure requirement. The device can be used in portable exposure condition without restriction.

1. Charge:When the battery is too low, please timely charge can effectively protect the battery life.
2. To avoid overheating of the equipment and cause accidents, do not charge device while it is in an environment above 50°C.
3. The device uses the built-in battery, to avoid damage to the device, do not disassemble by yourself.
4. Do not make the device subjected to violent impact, puncture and extrusion to prevent damage and rupture of the battery; If the battery ruptured, please avoid contact with eyes and skin. Please do not rub the contact part if the battery contacted with the skin, rinse immediately with water and send to the doctor.
5. The measured data of this equipment are all reference data, do not use as a medical device.
6. Put the earphone into the watch, and earphone will automatically shut down and charge, take the earphone out of the watch, it will automatically power on.
7. The red light keeping on when charging and light off when earphone battery full.
8. When the power of the watch is lower than 10%, the earphones will not be charged. The earphones will automatically turn on and connect the phone, and the phone will display the connected status. (Please charge the watch in time)

Attention! After using the earphone, please clean it and then put it in the charging case. Please make sure that the charging position on the earphone is clean and free of water, sweat and dirt. To prevent abnormal charging or oxidation, causing damage to the product and affecting use!

Documents / Resources

	<p>Shenzhen Manridy Technology MF6 Smart Watch [pdf] User Manual MF6, 2A6B6-MF6, 2A6B6MF6, MF6 Smart Watch, Smart Watch</p>
---	---