



Shenzhen Kunkun Technology H66 HiFi Player User Manual

[Home](#) » [Shenzhen Kunkun Technology](#) » Shenzhen Kunkun Technology H66 HiFi Player User Manual 



SHENZHEN

Kunkun Technology H66 HiFi Player
User Manual

Contents

- [1 H66 HiFi Player](#)
- [2 KEYS Function](#)
- [3 Functions](#)
- [4 Music Scanning](#)
- [5 Bluetooth](#)
- [6 Playback Setting](#)
- [7 How to Use USB-DAC](#)
- [8 Documents / Resources](#)
- [9 Related Posts](#)

H66 HiFi Player

Caution:

When using this precision electronics gadget, some kind reminders for you:

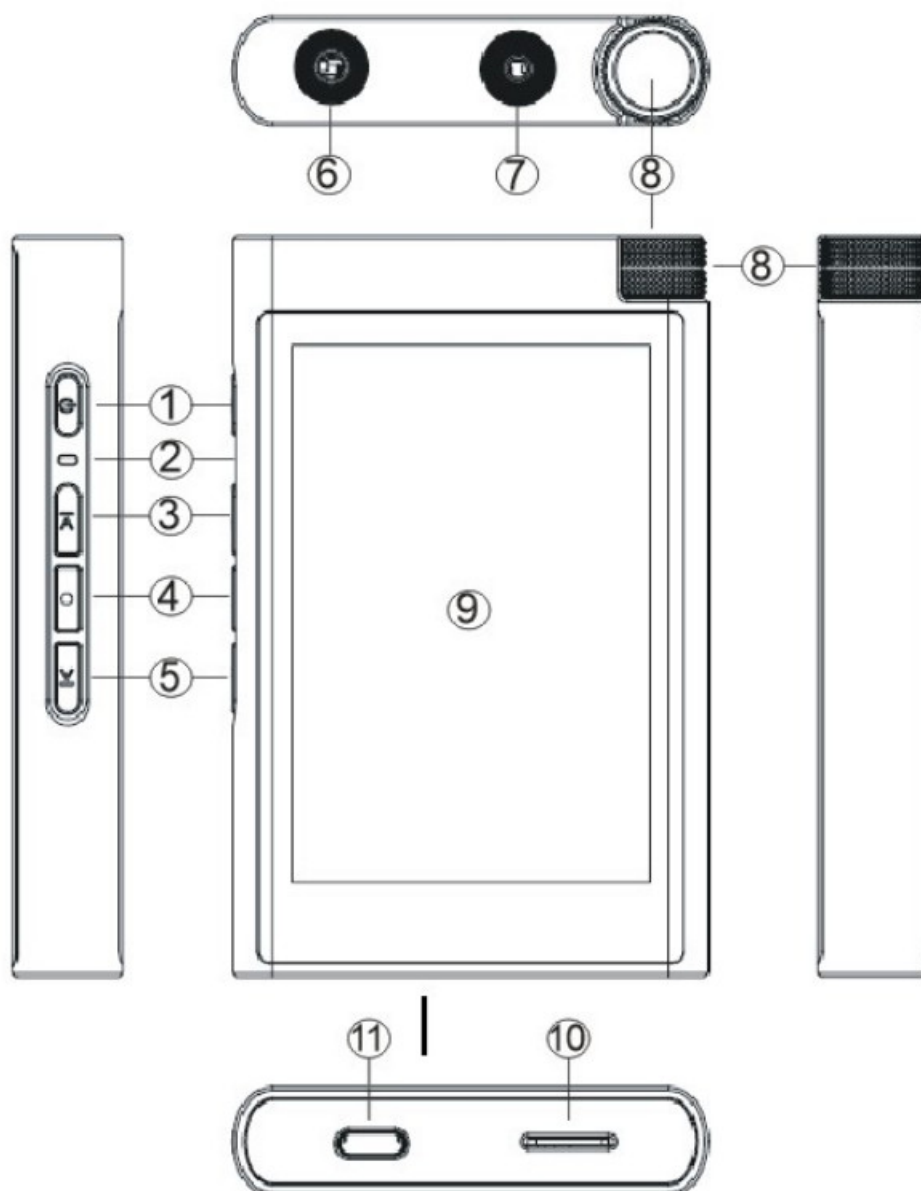
1. Keep the item away from the EME and m moisture environment.
2. Do not try to disassemble or rebuild the product.
3. Do not clan the item with corrosive detergent.
4. Keep away form water.
5. Do not squeeze the item.
6. Do not directly bath under the sun, keep away from fire or high and low temperatures.
7. Do not shock or crash it.

8. Use at low volume first, and gradually increase to the suitable volume. To Protect your hearing, do not set it at too high a volume.
9. Keep the item in a safe place, and keep it away from the child.
10. When connecting to the computer or charging, the body will be hot, it is normal. It takes 5 hours to be fully charged.
11. Do not disassemble the device, it will void the warranty, any issues, please kindly contact us via email:
12. Do not use it while driving, riding, or in other circumstances that are not suitable.
13. Charging Notice:
 - A) the device was equipped with a polymer lithium-ion battery, it can repeat charging. The first time using, we suggest being fully charged for at least 5 hours, in order to extend the battery life.
 - B) After a full charge, continue to charge for 30 minutes, so it can play longer time.
 - C) Do not change the battery by yourself.
 - D) Battery life may vary from a working environment.
14. Charging: input 5V 1000mA(overcharging or low charging may damage the battery or decrease battery life span).
15. The item may release a new firmware that may lead to difference content from the user manual. Packing list
 - 1 x H66 Device
 - 1 x USB Cable(type-c)

Product Feature

 - 3.5 inch 320X480pixels IPS High Resolution Display.
 - in cell high sensitivity full captive screen.
 - 24bit/384khz master tape grade playback, support various lossless audio formats.
 - Elegant zinc alloy housing.
 - Embed with ESS top-grade chip ES9218PC to drive the 3.5mm single-ended headphone jack.
 - Come with high definition recording function, adopted the DMIC digital recording, easy to record high-quality audio in various format and sampling rate.
 - Headphone output 2Vrms, the power is strong.
 - Touch operation and key operation, easy to use at the style you like.
 - CSR4.2 two-way Bluetooth, supports lossless transmission.
 - Independent clock system, low noise, low vibrate passive crystal to ensure the perfect hardware decoding DSD256 lossless audio.
 - USB DAC decoding, can use as a computer external sound card 1.
 - Support LINE OUT (LO)Analog output and SPDIF out digital audio output, support various audio equipment.
 - Built-in 2200mAh High Capacity battery, ensure long playback time.

KEYS Function



1. Power	7. 2.5mm balance headphone jack
2. Indicator Light	8. Volume knob
3. Prev	9. Display screen
4. Play/Pause	10. TF Card
5. Next	11. TYPE-C USB
6. 3.5mm headphone jack	

Functions

Power ON/OFF

Press the POWER button for 3 seconds, it will turn on the device, and the blue indicator light ON. When the device is ON, press the POWER button, it will turn off the device.

Notice: when the device is frozen, we can press and hold the POWER button to reset the device.

Lock Screen

Press the POWER button for 1 second to lock/unlock the screen. We can also set different buttons to lock/unlock the screen in the system setting.

Device Reset

When the device not works correctly, press and hold the POWER button for 10 seconds, until the blue indicator

lights off, and then turn on the device, an error will correct.

Blue Indicator Light

When the machine is working, it will also be on.

Charging

- charging through wall adapter: input rate 5V 2000m A
- charging through PC/Laptop: usually, its power is not enough, charging time will be longer.
- charging through the power bank

Notice: if the device is not been used for a long time, please kindly charge it every 3 months to extend the battery life.

While charging and playing, the device will be kind of hot, it is normal.

SPDIF Output

If no earphone is detected, the device will default set at SPDIF output, we can connect to the USB-C port (charging port) to hear music (if have USB C port device in your hand)

Insert TF Card

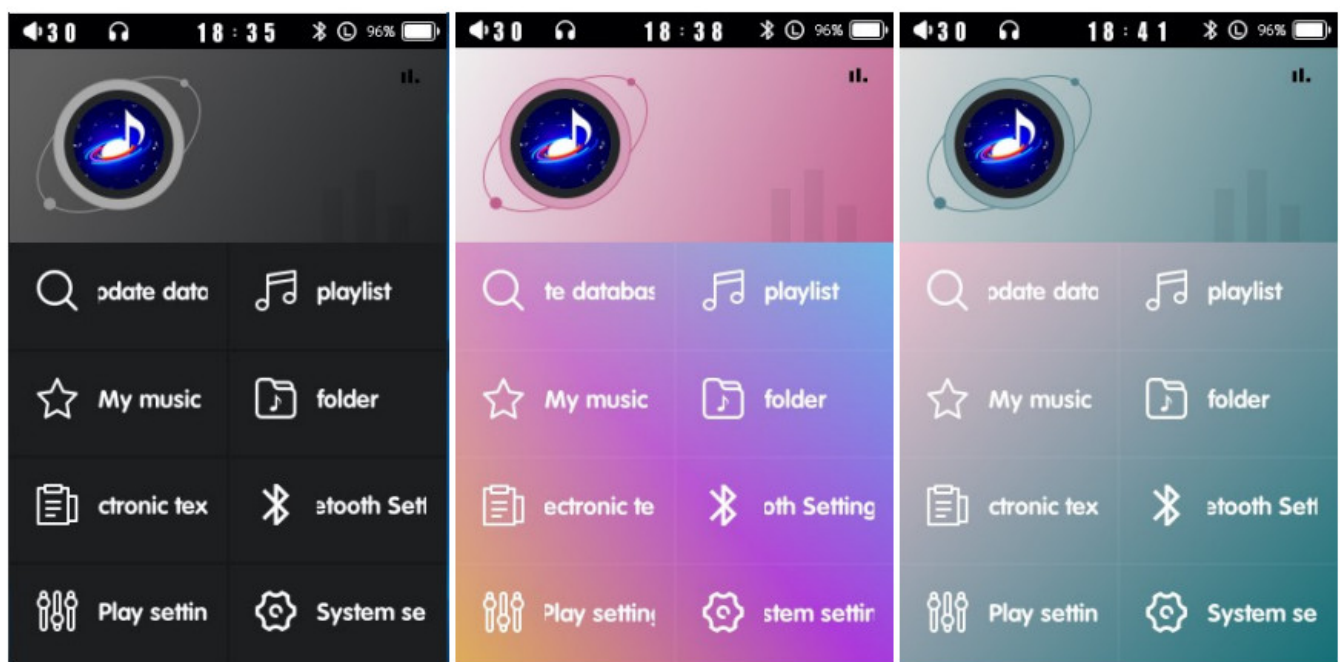
Insert TF in the correct direction, it will automatically lock the card. If need to remove the TF card, just simply push in the TF and release it, TF card will jump out, and then take it.

Note: please kindly choose CLASS10 above high-speed card, in order to get fluent music experience.

The device didn't include a TF card, need to buy an additional one.

Music Player Menu

Main Interface



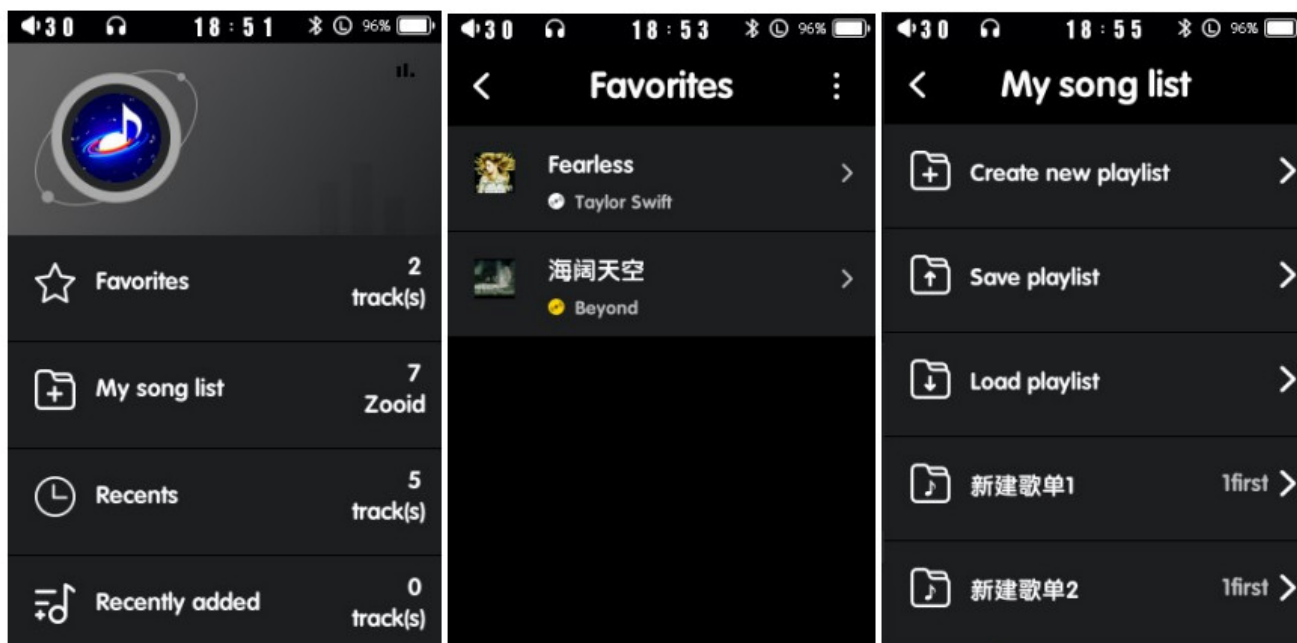
At the main interface, it has 8 sections: Music Scanning, Playlist, My music, folder, e-book, Bluetooth, Play Setting, and System Setting. Just simply touch the function to enter the respective settings.

The main interface is as shown in the picture above, which can be divided into 3 styles, You can set your favorite style in the theme style in the system Settings.

Music Scanning

Touch the Music Scanning section, it can scan all music files on the device.

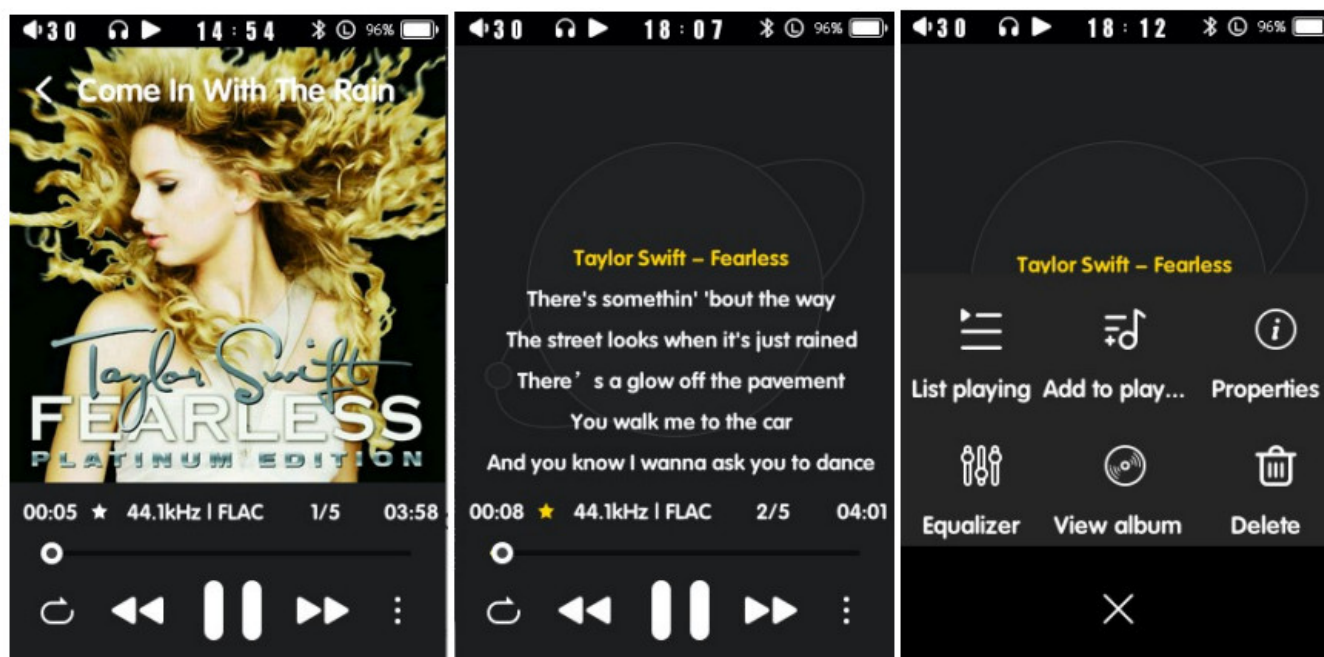
Select Scan mode from the system settings menu. If you do not scan and update the changed song, The list will still save the previous information, which may cause the song cannot be found and the file cannot be played




Playlist Interface

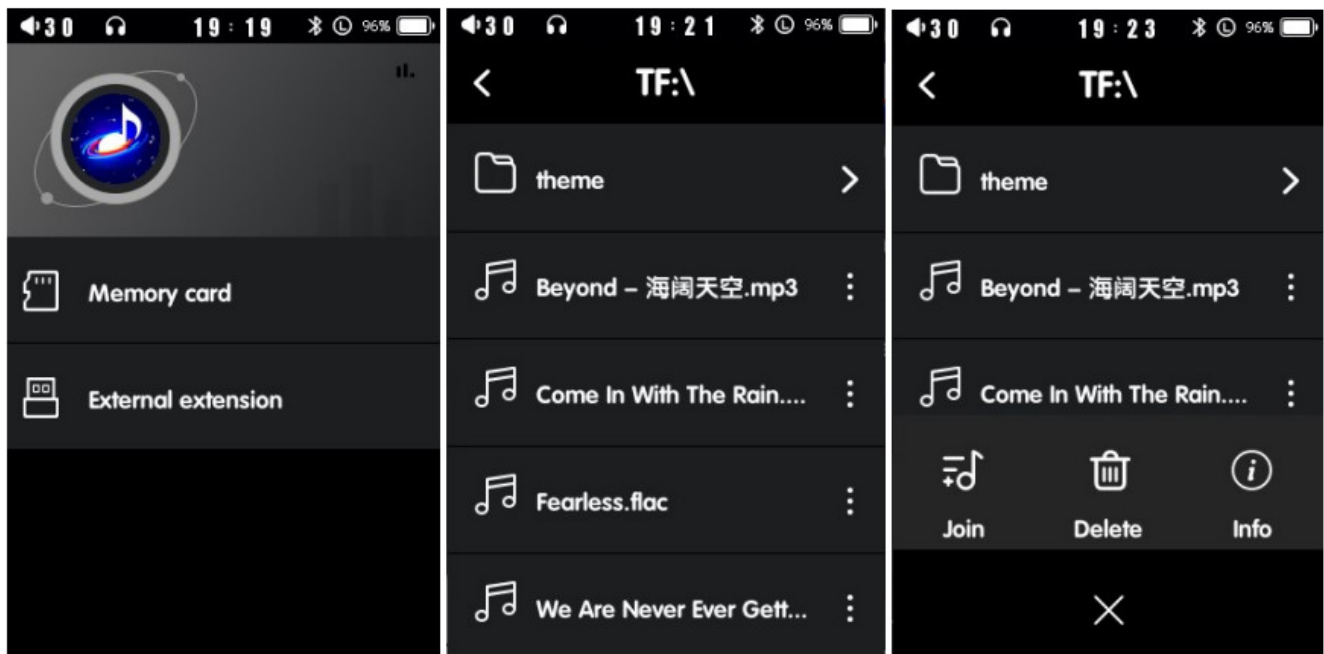
This list mainly shows all the songs stored after scanning and the number, According to the latest play, Album, singer, style classification, to quickly find favorite songs.

Playback Interface



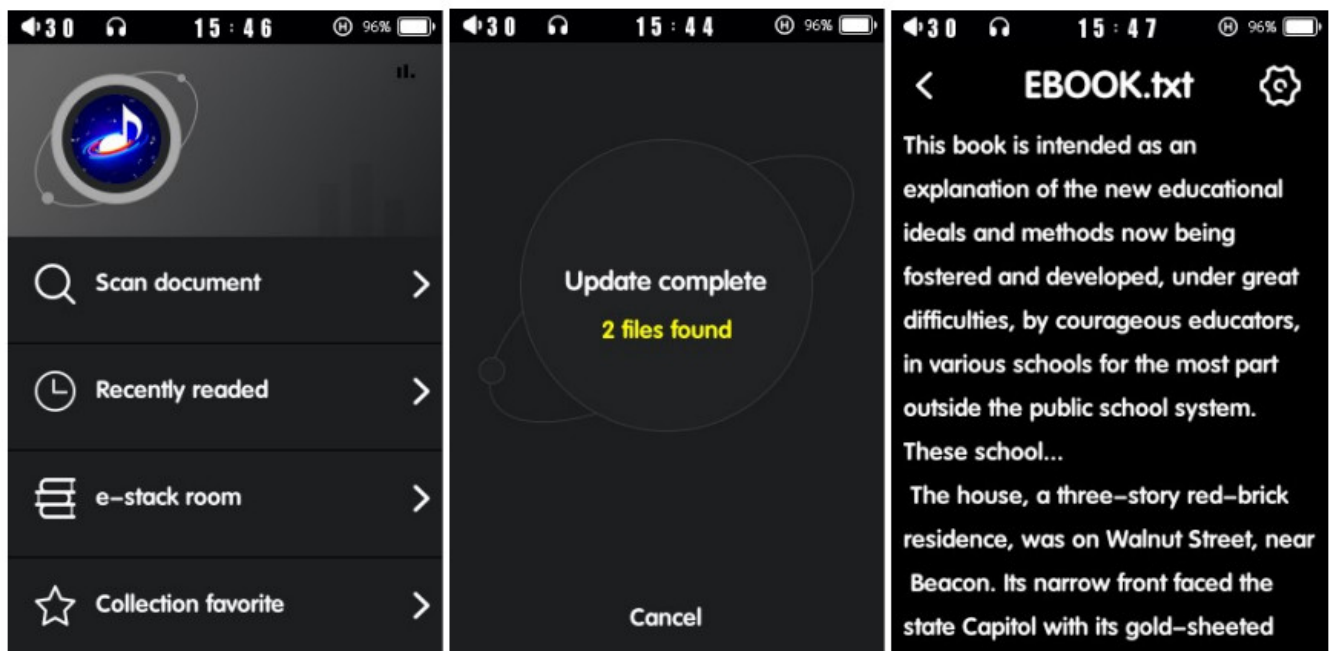
Click the blank place, it will show lyrics (if has)

Click  go to the current playlist, EQ setting, and more



My Music

My music is added to my favorites and created by myself when playing songs Create a playlist of songs folder

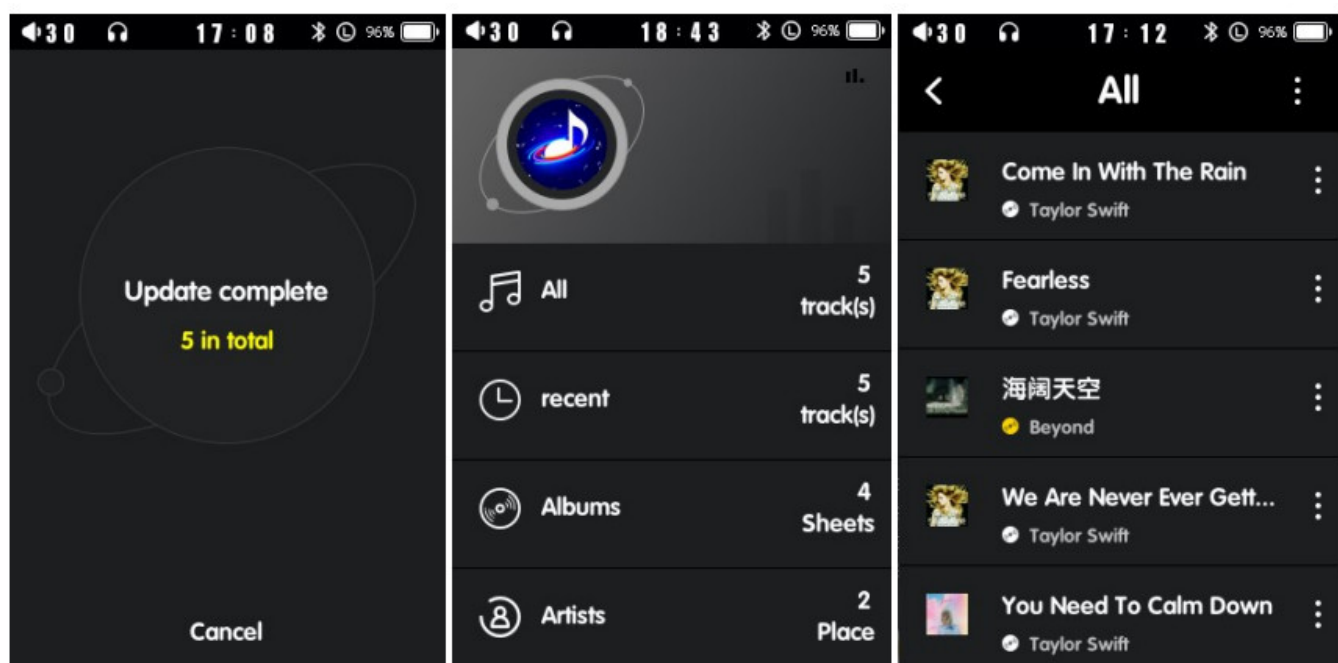


Folder

Mainly display TF Card and OTG external expansion device, view Folders, and songs in the device can also be played directly/temporarily in the song list Stop; Click after the song name to add to playlist, delete and search

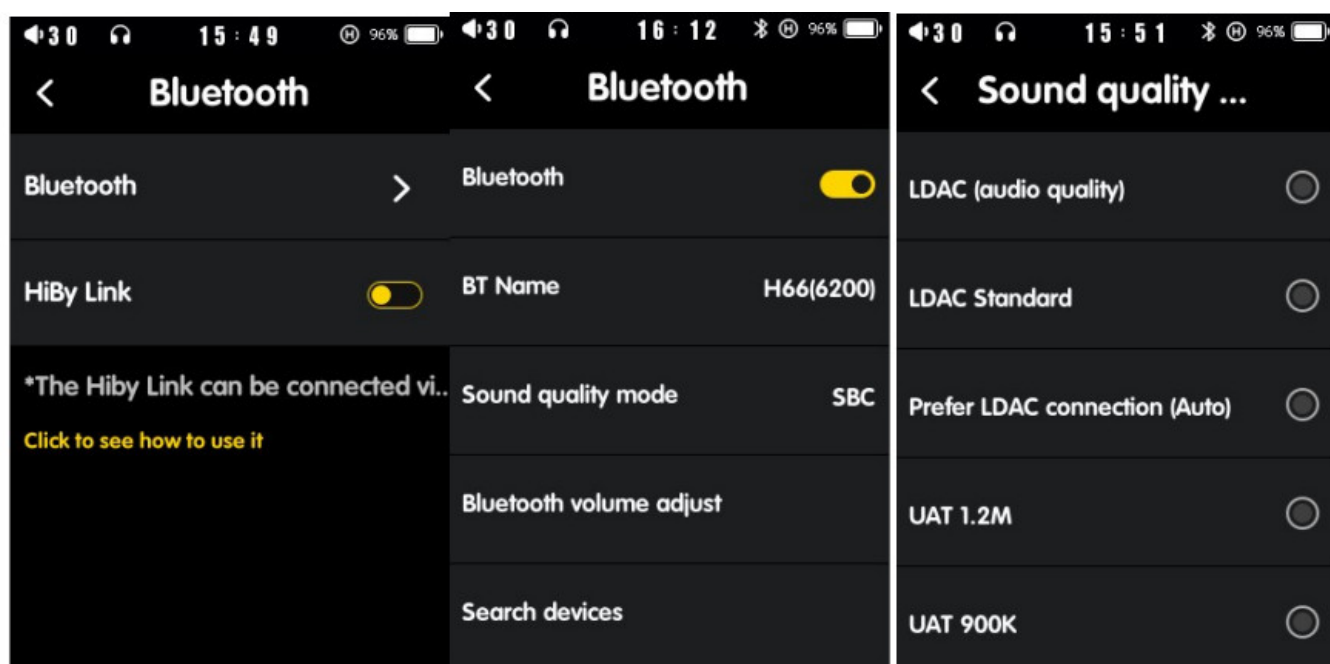
See song information

E-BOOK



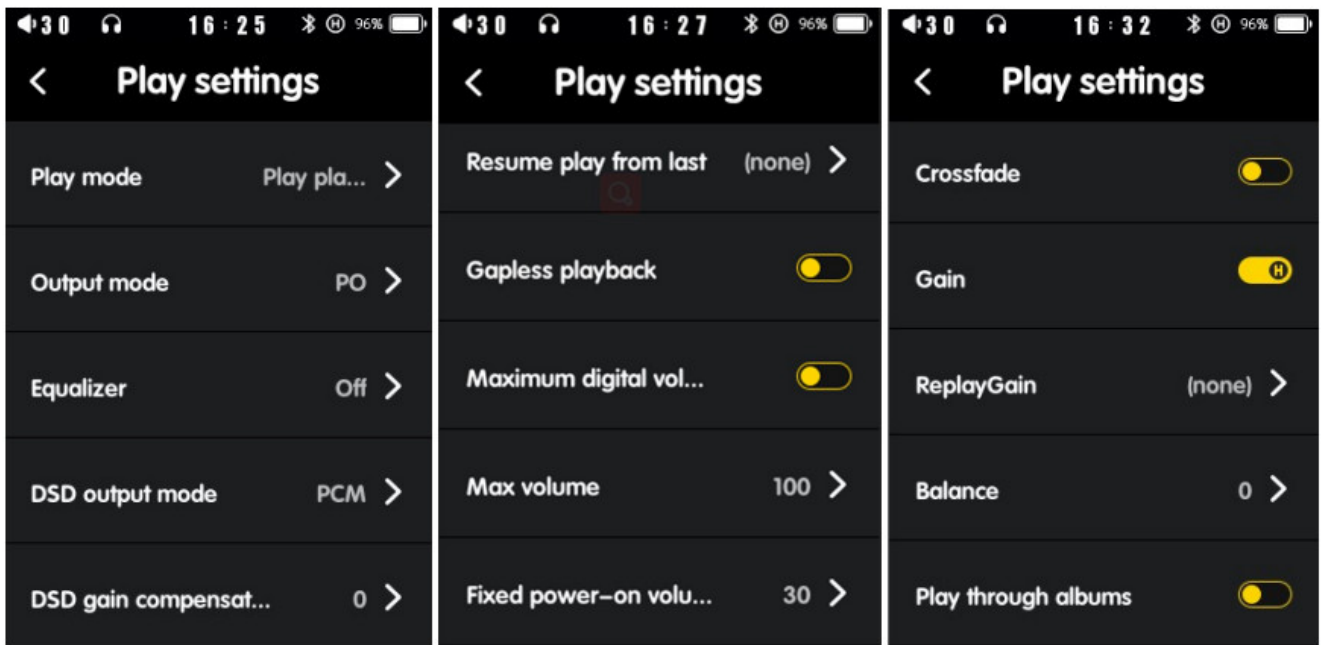
Enter the E-book, you can search the e-book document, open the e-book document you want to read, view the recently read e-book document, and edit, add favorites, or delete operations.

Bluetooth



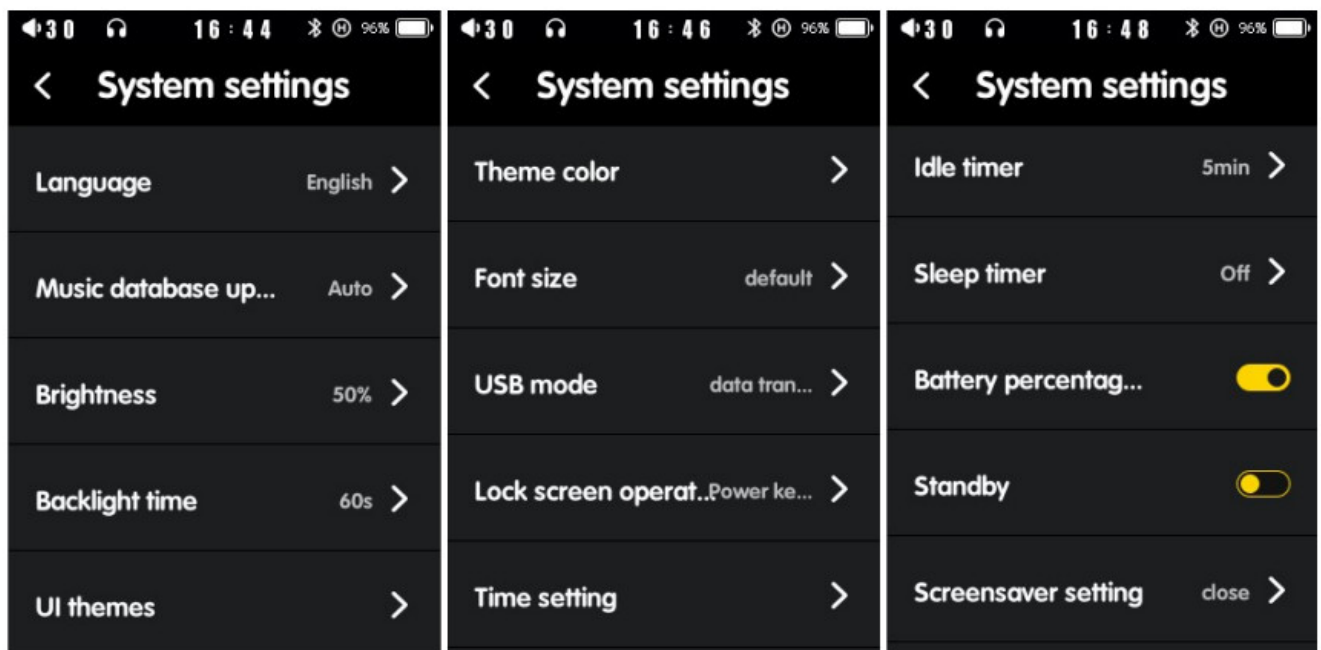
Turn the ON/OFF Bluetooth function, search for Bluetooth device, select audio quality, Bluetooth volume, and so on.

Playback Setting

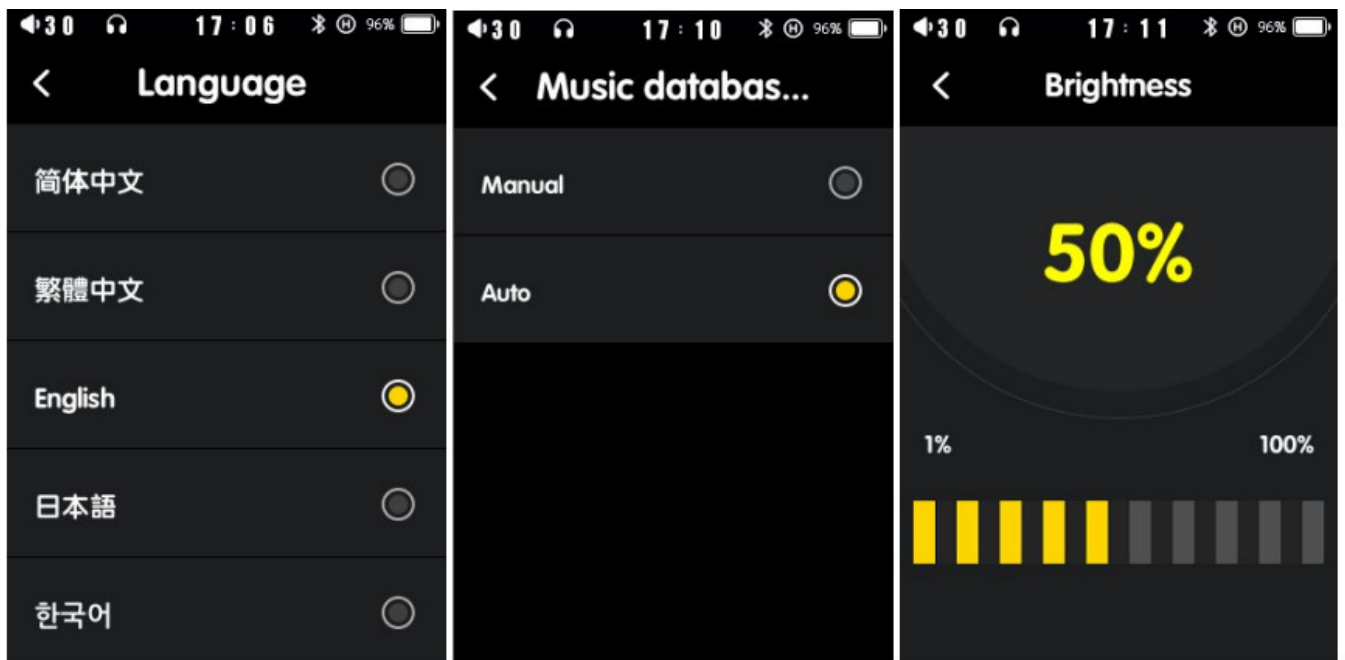


The playback setting is the function setting of music playback on the Machine, including playback mode, EQ equalizer, DSD output mode, DSD gain compensation, power-off memory playback, seamless playback, maximum digital volume output, maximum volume limit Control, startup default volume, fade in and out , gain Settings, playback gain, LR sound Track balance, digital filter, folder hop, album hop, and other Settings.

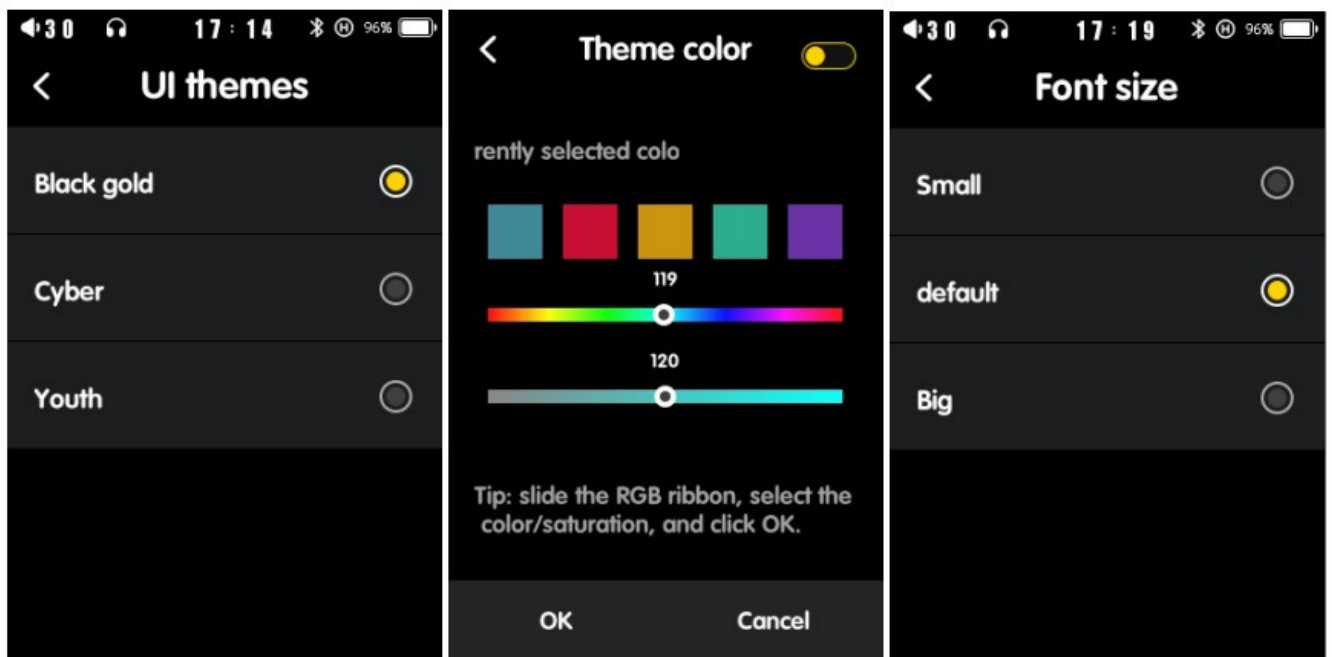
System setting



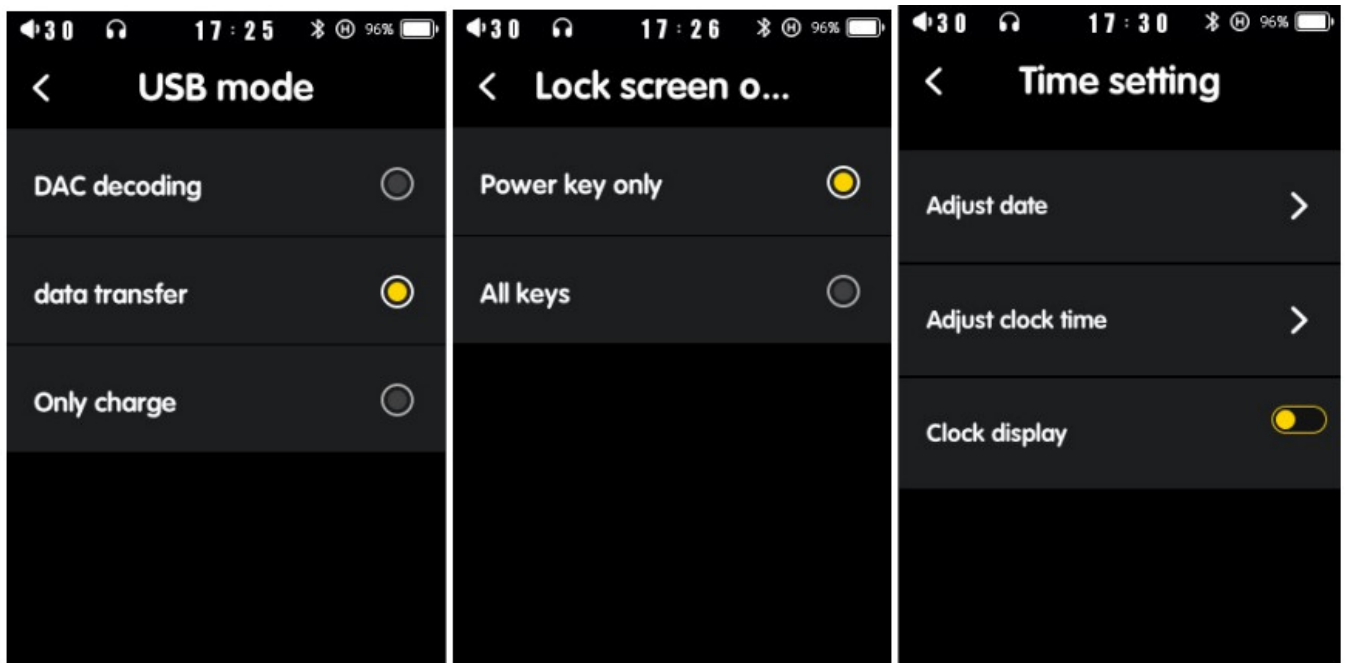
System Settings In the setting, you can set the language, music scan mode, backlight Brightness, backlight time, theme style, colorful theme, font size, USB mode Type, lock screen operation, time setting, power saving shutdown, sleep shutdown, battery power display Display, standby, screen saver Settings, factory restore, firmware upgrade and about the machine.



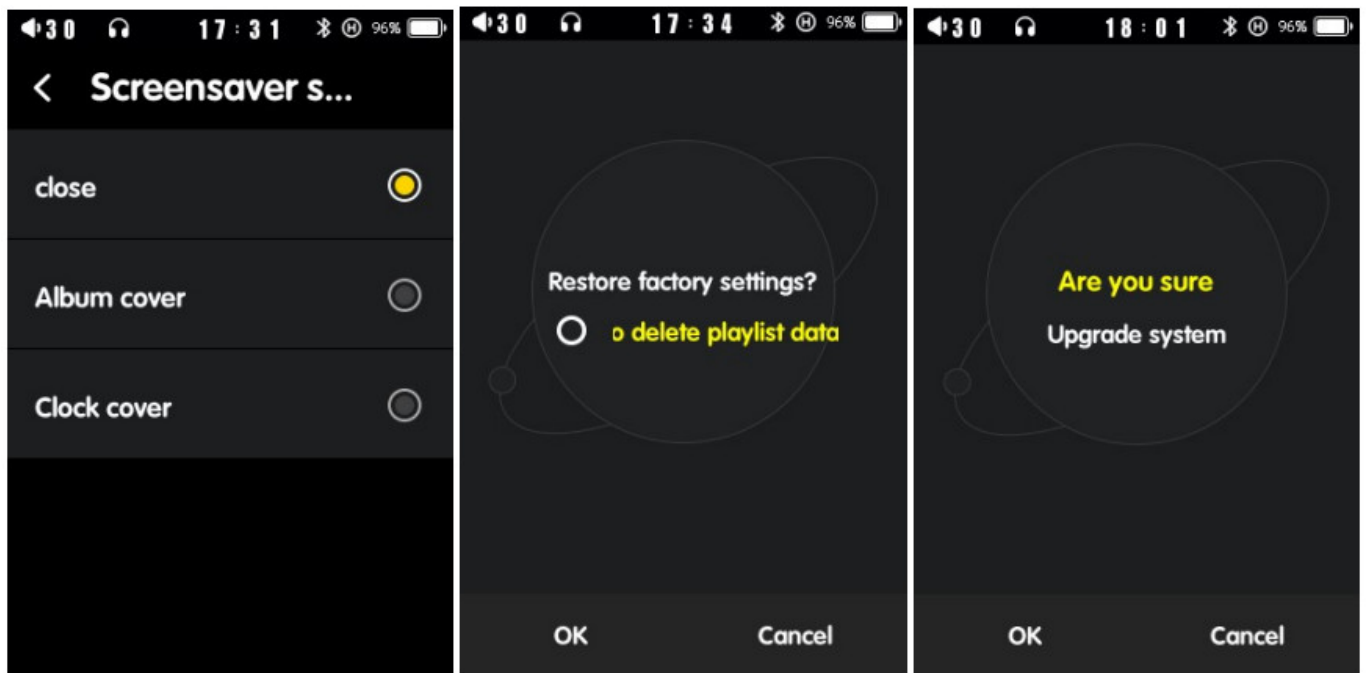
Language selection, music scan mode, and backlight brightness Settings.



Theme style selection, colorful theme Settings, and font size selection



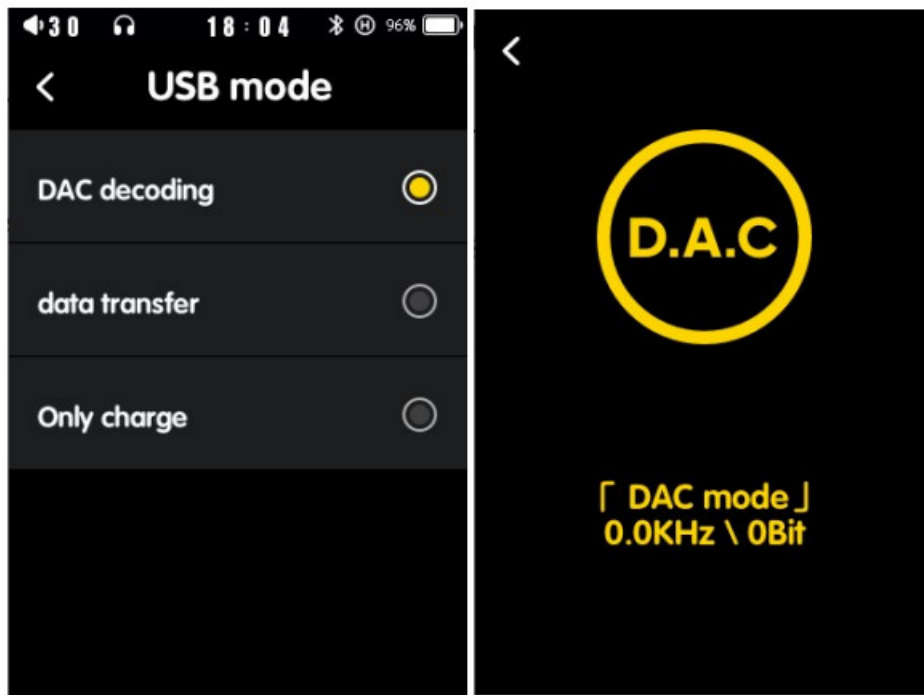
USB mode selection, lock screen key Settings, and time Settings



Screensaver picture selection, factory restoration, and firmware upgrade operations

How to Use USB-DAC

This player supports the USB-DAC function



1. Turn on the player, go to system setting, set USB mode at DAC decoding, and then connect to the PC, and then you can see the PC show "find new hardware", no need for any operation, it will automatically install.
2. Then you will see "DAC" shown on the device.
3. Insert earphones, you can hear music now.

Size	101.5mm*65mm*15mm(L*PH)
Screen	3.5" 320X480 TFT
Power	2200mAh/3.7V Rechargeable Lion battery
	TYPE-C USB 5V2A Input
Supported Music File Format	APE (192KHz/24bit)
	WAV (384KHz/24bit)
	WMA (192KHz/24bit)
	Wma Lossless (96KHz/24bit)
	FLAC (192Kz/24 bit) ,
	DSF (11.28MHz/ 1bit)
	DFF (11.28MHz/ 1 bit)
	Aiff, M4A, MC, OGG, MP2 /MP3
Total Harmonic Distortion(THD)	3.5 Single-ended output <0.005% 2.5 Balances output <0.005%
Signal-to-Noise Ratio	..?-118dB@1KHz , ± 2dB
Frequency Response	20Hz-20KHz
Headphone Output Max	3.5mm 2Vrms/32 (L/R) 125mW
	2.5mm 4Vrms/32 (L/R) 400mW

Level	
Channel Separation	3.5mm Single-ended >70dB 2.5mm Balances >90 dB
Dynamic Range	118dB ±2dB
Headphone Impedance	16 Ohm-300 Ohm
Analog Output	3.5mm Single-ended headset output
	2.5mm Balances headset output
Digital Output	SPDIF (USB—C Port)
USB C Port	USB2.0 Charging, data transfer, , USB—DAC
Card Slot	TF Card:-C. 512GB
Working temperature	32F-104F
Support	Windows XP/Vista, Win7/8.1, Win10, Mac OS 10, Linux 2.4.2 above

FCC Requirement

Any changes or modifications not expressly approved by the party responsible for compliance could void the

user’s authority to operate the equipment.

This device complies with Part 15 of the FCC Rules. Operation is subject to the following two conditions: (1) this device may not cause harmful interference, and(2) this device must accept any interference received, including interference that may cause undesired operation.

Note: This equipment has been tested and found to comply with the limits for a Class B digital device, pursuant to Part 15 of the FCC Rules. These limits are designed to provide reasonable protection against harmful interference in a residential installation. This equipment generates, uses, and can radiate radio frequency energy, and if not installed and used in accordance with the instructions, may cause harmful interference to radio communications. However, there is no guarantee that interference will not occur in a particular installation. If this equipment does cause harmful interference to radio or television reception, which can be determined by turning the equipment off and on, the user is encouraged to try to correct the interference by one or more of the following measures:

- Reorient or relocate the receiving antenna.
- Increase the separation between the equipment and the receiver.
- Connect the equipment to an outlet on a circuit different from that to which the receiver is connected.
- Consult the dealer or an experienced radio/TV technician for help.

Documents / Resources

<div><div>HiFi Player</div><div>Caution:</div><div>When using this product, electronic gadget, some kind operation for you:</div><div>1. Keep the item away from the flame and in moisture environment.</div><div>2. Do not try to disassemble or rebuild the product.</div><div>3. Do not use the item with excessive strength.</div><div>4. Keep away from water.</div><div>5. Do not separate the item.</div><div>6. Do not directly look under the sun. Keep away from the bright and low temperature.</div><div>7. Do not use in water.</div><div>8. Use at low volume first, and gradually increase to the suitable volume. To protect your hearing, do not use at too high volume.</div><div>9. Keep the item in safe place keep away from the child.</div><div>10. When connecting to the computer or charging, the supply will be hot. It is normal. It takes 3 hours to be fully charged.</div><div>11. Do not disassemble the device, it will void the</div></div>	<div>Shenzhen Kunkun Technology H66 HiFi Player [pdf] User Manual P66, 2A8UE-P66, 2A8UEP66, H66 HiFi Player, H66, HiFi Player, Player</div>
---	---