



Shenzhen Jumper Technology EZBOOKX31 Portable Computer User Manual

[Home](#) » [Shenzhen Jumper Technology](#) » Shenzhen Jumper Technology EZBOOKX31 Portable Computer User Manual 



Notice en Franc; ais–37-45
User Manual

Contents

- [1 Introduction](#)
- [2 Introduction to Desktop](#)
- [3 Basic Operations](#)
- [4 Battery charging](#)
- [5 V.BIOS – Setting & Bootmanager](#)
- [6 Troubleshooting](#)
- [7 Documents / Resources](#)
- [8 Related Posts](#)

Introduction

Thank you for choosing this product. The device brings you much convenience for your business (supports Word*, Excel*, send & receive e-mails*) and entertainment. Running on Microsoft Windows 10 operating system, It brings you a wonderful user experience. This guide serves to enable users to get to know and familiar with the product as soon as possible. Here we have made a brief introduction in figures and words. Before beginning, please refer to this user manual carefully.

*Software not included

Important Notes: Charge the battery for at least 12 hours before initial start-up.


Precautions before Use

1. This product is suitable for use in non-tropic areas below 2,000 meters
2. Prevent this product from falling to the ground. It could be strongly damaged.
3. Keep the device away from rain, moisture, direct sunlight, and heat source.
4. Avoid using it in a strong magnetic and strong static environment as much as possible.
5. Once any water or other liquid splashes onto this product, close it immediately and do not use it until it dries out.
6. Do not clean this product with any detergent containing a chemical element or other liquid to avoid causing damage due to corrosion and becoming damp. If cleaning is really necessary, clean it with dry soft cloth tissue paper.
7. Handle the screen gently. To clear fingerprints or dust on the screen, use soft cloth dedicated for camera lens instead of gauze.
8. Please back up your important files at any time to avoid loss.
9. Please do not disassemble this product by yourself; otherwise, you will lose the right to warranty.
10. Do not disconnect the device from power suddenly, when formatting or updating and downloading, which can lead to program errors.
11. Please use the original AC adapter for charging. Nonconforming chargers may cause harm.
12. Protect the power cord. When connecting the power cord, do not step onto it or place any object on it, which may cause extrusion. Protect the connector of the power cord connected devices especially.
13. Batteries: The batteries in this product cannot be easily replaced by users themselves. Replacement with incorrect type batteries may cause an explosion.
14. While using the earphone, if the volume is excessively high it may cause hearing damage. So please adjust the volume of the player to a moderate level and balance the time of using.
15. Pictures in this manual are for demonstration purposes only and may differ from the real product.
16. Caution]



This unit contains a battery. If the battery is defective, it should not be disposed of with household



waste. Batteries can possibly contain harmful substances that  can harm the environment and people's health. Please dispose of the battery commercially or at a municipal recycling plant. Return is free of charge and is prescribed by law. Please only dispose of empty batteries in the containers provided and tape the terminals.

Intended Use

This product offers many opportunities far from use. For example, surf Internet, read e-books, look at movies, play games and communication with the whole world. This product is intended for home and office use and not for industrial applications.

Introduction to Desktop

Images about select applications

Same experience as you use Desktop PC. click  first at the left-hand side corner, then click 



After calling out the APP list, select the APP you need.



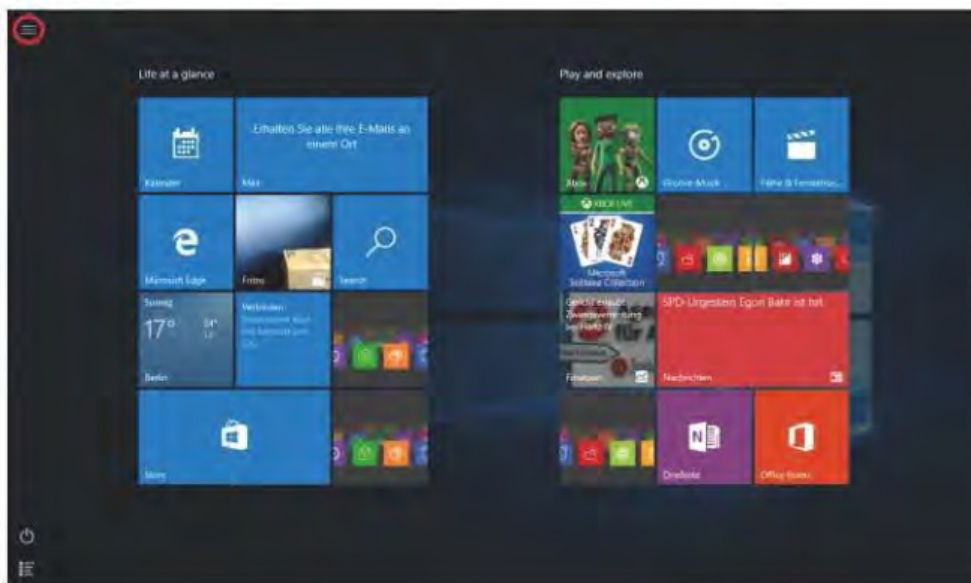
Basic Operations

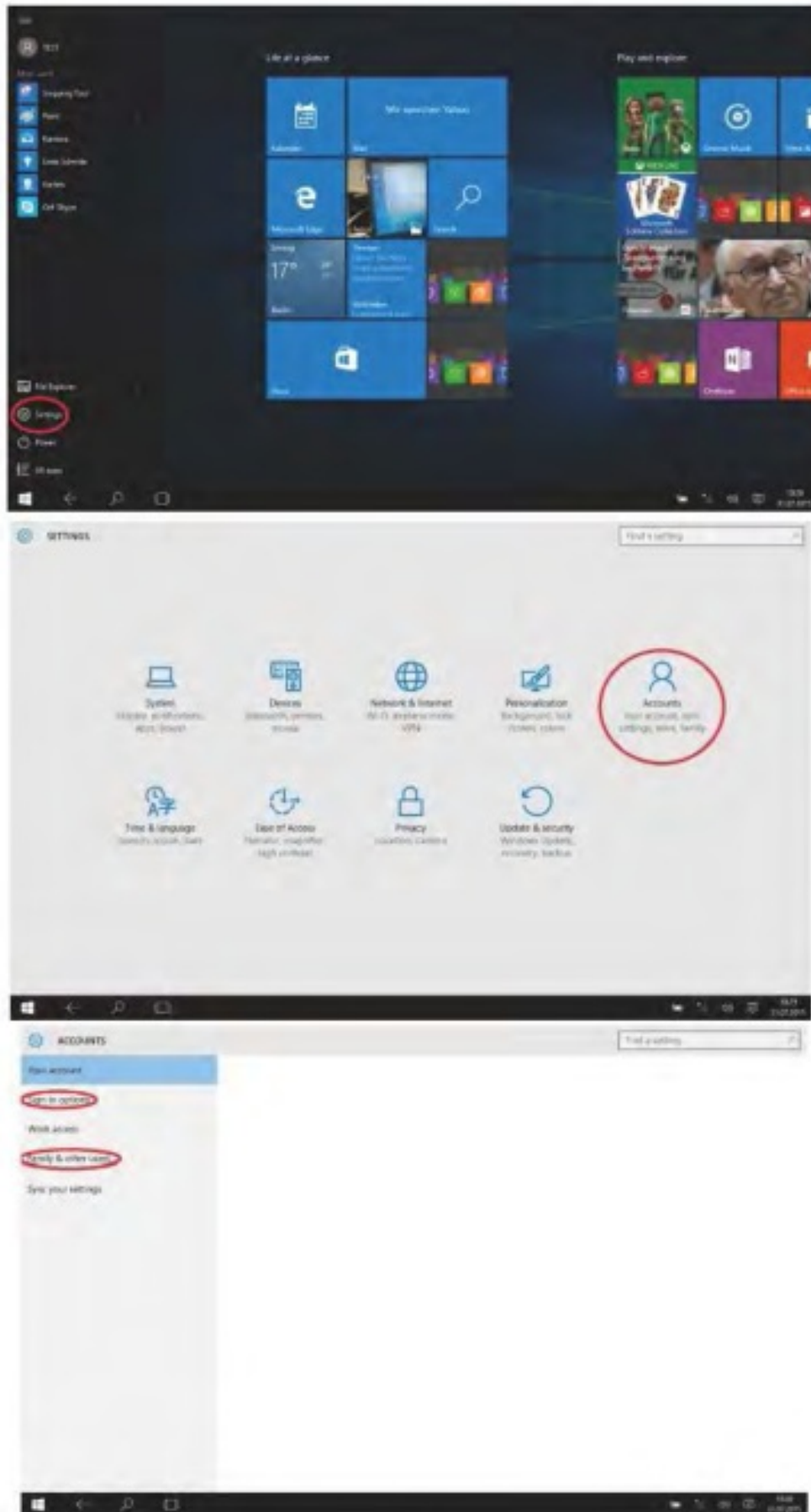
1. Sleep, restart, and Shut down



2. Security Management

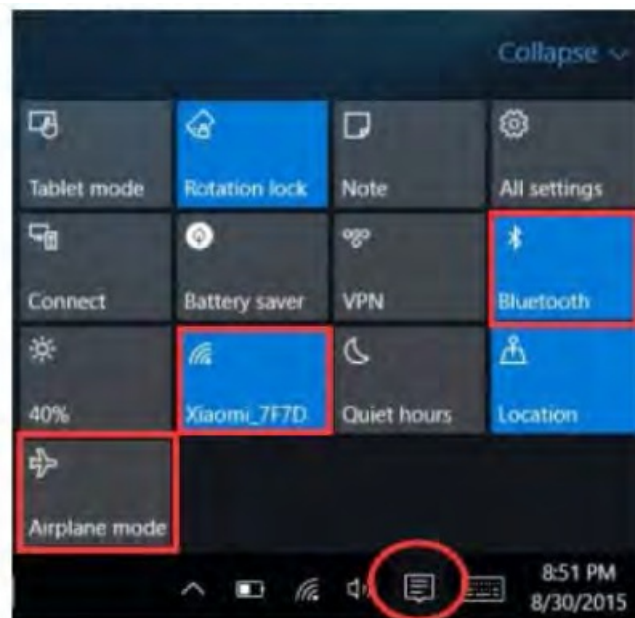
User and password setup- ► Get in Settings-accounts- ► Sign-in options to set up a password.





3. Wi-Fi, Bluetooth, Flight mode

Touch to Open Setting Tablet to set up Airplane mode / Wi-Fi /& Bluetooth, and this device can connect 2.4G and 5G Wifi.



4. Cortana

You can use Cortana (voice control) to set reminders, write emails, search, and chat with friends and family on messengers.



Battery charging

Connect the power adapter to the power port of the device. Connect the power adapter (plug into the power outlet for charging the battery). Please only use the provided original power adapter.

During charging, the icon of the battery will be  and when charging completes, the icon will be.



- You can still use the device while charging, but this will prolong the charging time.
- Use the device at least once every week.
- Fully charge the battery regularly.
- Don't keep the battery empty for a long time.

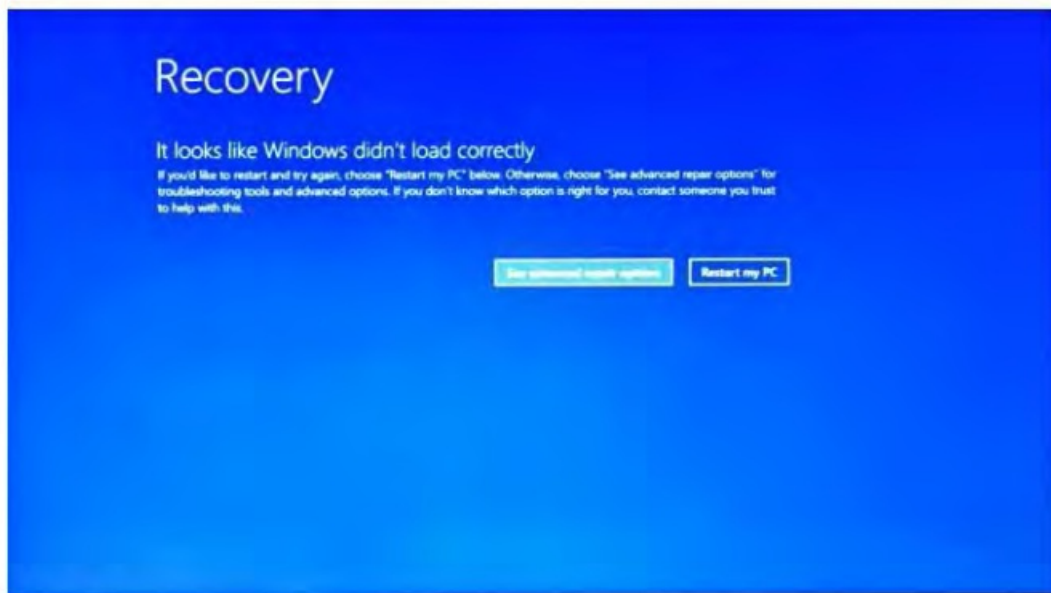
NOTE to ander to mairesungood W1-14 wart the barcoryshoakt be deargethbra minimum 0f30%.

V.BIOS – Setting & Bootmanager

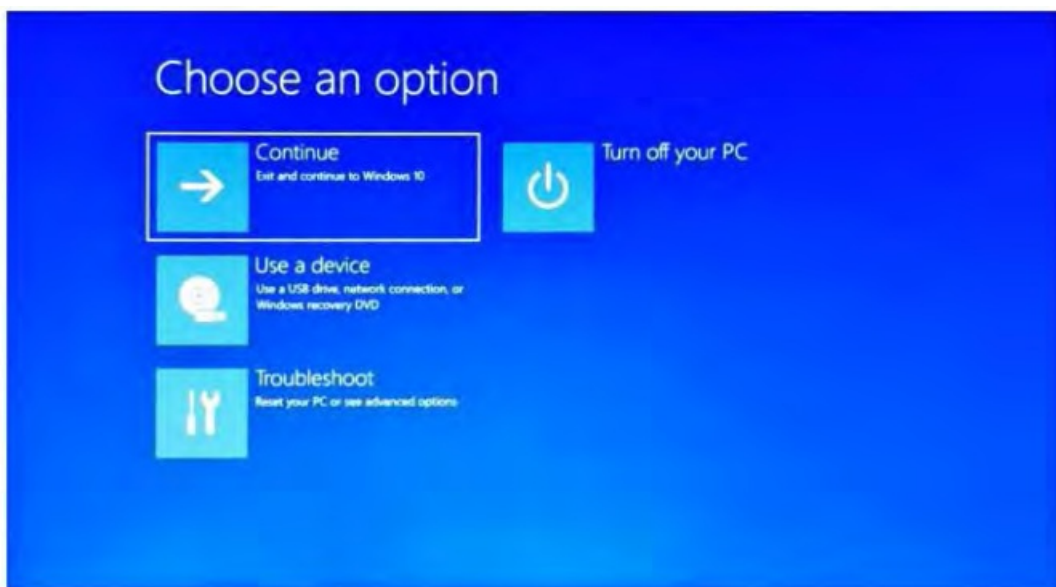
Press and hold the ESC- button on the keyboard and switch on the device (press the power button). A screen with different positions will appear. Use coil on 'Sat' for BIOS sewing and Boot Manager for operating system boot option.

Troubleshooting

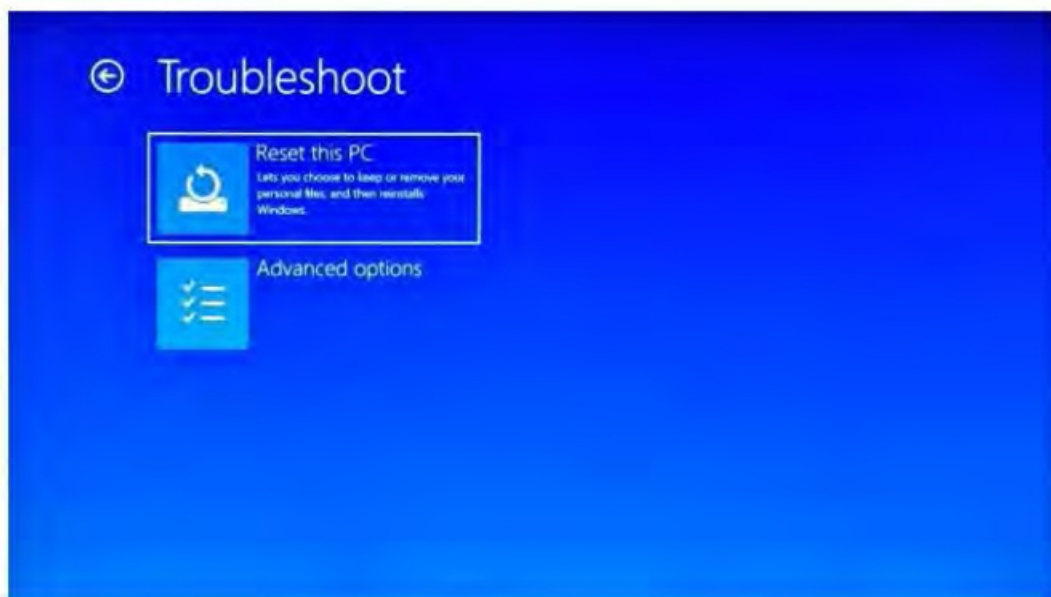
1. Con not on the device Press the power button for S seconds to turn on the device the above method doesn't work, please charge It far 30 minutes before starting.
2. 1los rad fromorphDee Check if volume Is set to '0'. Test if the earphone is broken, If so, please change to another euphony.
3. **big noise**
Check If there Is dust In the earphone or speaker. Check If the sound file Is broken.
4. **stone drifts or unresponsive screen**
Switch off the device by a long press (approx. 30 sec.) of the power button. (Do not use this way to switch off the device unless It's necessary.)
5. **Windows key cannot act immediately**
First, make sure the wl-F1 Is connected and the WI-FI network is a working network. Second. make sure the time zone and system time Are correct In your location. (Windows key active delay may happen sometimes because of the network speed or other reasons if you make sure the above two points are correct and the key still cannot active. Kindly contact our service team, please. We will support you immediately)
6. **Stow to enter desktop Interface when the first tim starts up.**
Follow the Microsoft Windows 10 starting up guide step by step to enter the desktop interface.
7. **Why has rnydevicahazatreadybeen registered byaoceuntna0**
e of "defaults are This Is a common software error that may happen In Windows 10 when the user starts up the device First, press the power button for 5-8 seconds to shut down the device. Do this 3 times, and then power on the device, below content will show up.
8. **Why when I Kan the keyboard character, la dim system it show another one?**
This may happen because you choose the wrong language when you first time turns on the device. Below Is the method to correct the language and Input. Choose the windows home button at the left bottom side of the desktop, 1. Then choose ' setting'-,choose 'Time& Language'-,choose -Reglon&language—choose "Add a language'-,choose the correct language you want,choose 'set as default". 2. Restart the device. The language will be corrected.
9. **Windows automatic update may cease some nuts recently, below Is the method of how to open or close the automatic update function.**
Long press(Tablet) or click the mouse right button(Laptop) on the windows home button at the left 0 bottom side of the desktop. Choose-Task Manager +choose 'More details' -.choose 'Services' + choose 'Open Services"-• find 'WindowsUpdate" and long press(Tablet) or click mouse right butlon(Laptop) on it...choose 'Properties'-, find Startup type and choose the option you want. There are 4 options, Automatic (Delay 5start)/Autom at c/Manu alt disabled.



Press "see advanced repair options", below content will show up.



Press Troubleshoot, below content will show up.



Press 'Reset this PC' to fix the software error.

Notice: The Reset progress will take around 3-5 hours, in order to finish the Reset successfully, please connect the adapter to charge the device during the whole Reset progress.

FCC Statement

This equipment has been tested and found to comply with the limits for a Class 0 digital device, pursuant to part 15 of the FCC Rules. Their limits are designed to provide reasonable protection against harmful interference in a residential installation. This equipment generates, uses, and can radiate radio frequency energy and, if not installed and used in accordance with the instructions, may cause harmful interference to radio communications. However, there is no guarantee that interference will not occur in a particular installation. If this equipment does cause harmful interference to radio or television reception, which can be determined by turning the equipment off and on, the user is encouraged to try to correct the interference by one or more of the following measures:

- Reorient or relocate the receiving antenna.
- Increase the separation between the equipment and receiver.
- Connect the equipment to an outlet on a circuit different from that to which the receiver is connected.
- Consult the dealer or an experienced radio/television technician for help.

Caution: Any changes or modifications to this device not explicitly approved by the manufacturer could void your authority to operate this equipment.

This device complies with part 15 of the FCC Rules. Operation is subject to the following two conditions (1) This device may not cause harmful interference, and (2) this device must accept any interference received, including interference that may cause undesired operation.


Specific Absorption Rate (SAR) information:

This Portable coupler meets the government's requirements for exposure to radio waves. The guidelines are based on standards that were developed by independent scientific organizations through periodic and thorough evaluations of scientific studies. The standards include a substantial safety margin designed to assure the safety of all persons regardless of age or health. FCC RF Exposure Information and Statement the SAR limit of the USA (FCC) is 1.6 W/kg averaged over one gram of tissue. Device types: Smartphone has also been tested against this SAR limit. This device was tested for typical body-worn operations with the back of the phone kept 5 mm from the body. To maintain compliance with FCC RF exposure requirements, use accessories that maintain an 0 mm separation distance between the user's body and the back of the phone. The use of belt clips, holsters, and similar accessories should not contain metallic components in its assembly. The use of accessories that do not satisfy these requirements may not comply with FCC RF exposure requirements and should be avoided.



SHENZHEN JUMPER TECHNOLOGY CO., LTD
101, 102, 201, 301 No.13-2 Pingxi South Rd.,
Pingxi Community, Pingdi Street, Longgang District, Shenzhen, Guangdong

Documents / Resources

	<p>Shenzhen Jumper Technology EZBOOKX31 Portable Computer [pdf] User Manual EZBOOKX3R, 2AQAA-EZBOOKX3R, 2AQAAEZBOOKX3R, EZBOOKX31, 2AQAA-EZBOOKX 31, 2AQAAEZBOOKX31, EZBOOKX3AIR, 2AQAA-EZBOOKX3AIR, 2AQAAEZBOOKX3AIR, E ZBOOKX31 Portable Computer, Portable Computer</p>
---	--