



# Shenzhen Juku Intelligent Technology SWS-V000 Smart Weather Station with Clock User Guide

[Home](#) » [Shenzhen Juku Intelligent Technology](#) » Shenzhen Juku Intelligent Technology SWS-V000 Smart Weather Station with Clock User Guide 

*Shenzhen Juku Intelligent Technology SWS-V000  
Smart Weather Station with Clock  
User Guide*

## Smart Weather Station with Clock User Guide



Please read this manual carefully before using the product and keep it in a safe place for future reference.

## Contents

- 1 Introduction
- 2 Precaution
- 3 Main machine features
- 4 Auxiliary machine features
- 5 Installation and placement
- 6 Main machine & auxiliary machine synchronization and installation
- 7 App operation
  - 7.1 App Download
  - 7.2 Bind Device
  - 7.3 App control Panel introduction
  - 7.4 Share device
  - 7.5 Remove device
- 8 Specification
- 9 Package List
- 10 Troubleshooting
- 11 Certification
- 12 Documents / Resources
- 13 Related Posts

## Introduction

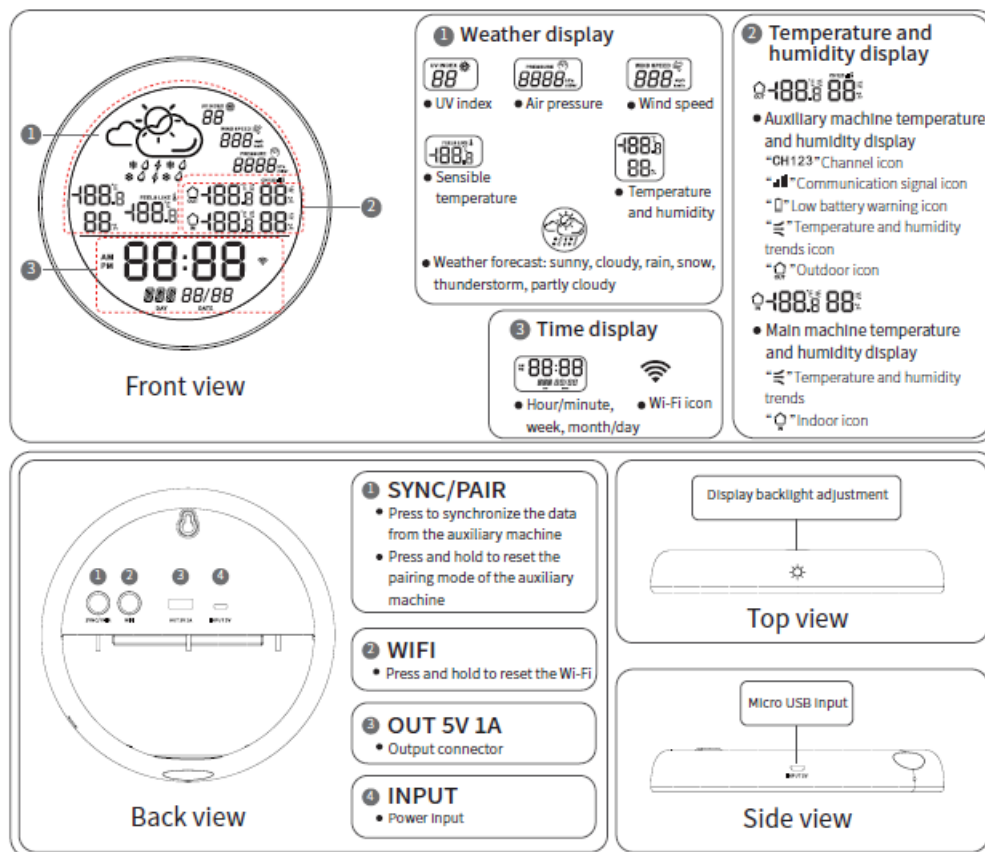
This smart weather station with clock collects weather data via internet to display weather information, time, date, temperature and humidity based on its location.

Every main machine connects up to three auxiliary machines. Place the auxiliary machine indoor or outdoor, the collected data will be transmitted and displayed to the main machine indoor. You can also configure and control it via your phone, and check the weather data, indoor/outdoor temperature history data from the APP or the main machine indoor.

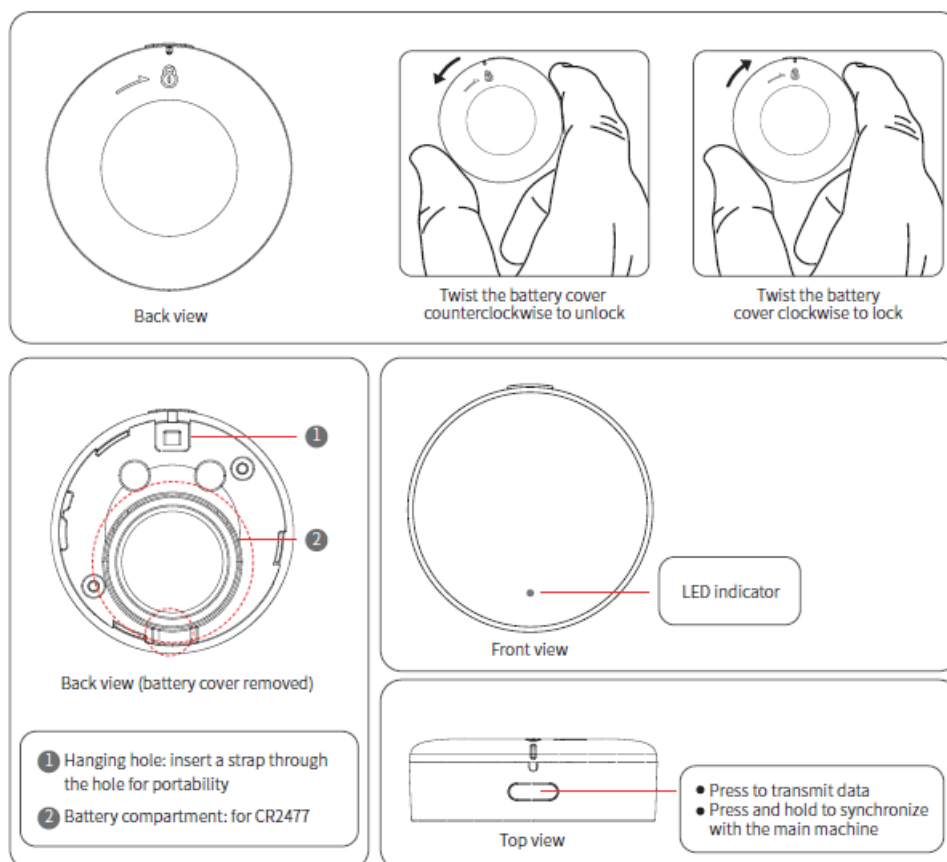
## Precaution

- Please take good care of the button battery to avoid accidental ingestion by children. For adult use only.
- The temperature of the product shall not exceed 60°C and shall not be lower than -20°C. Humidity must not be more than 99%, and not be less than 0%.
- This product is not fireproof, do not throw it into the fire or place it near any fire source.
- This product is not waterproof, do not immerse it into water in case of short circuit.
- Please remove the battery insulation sheet before using.

## Main machine features

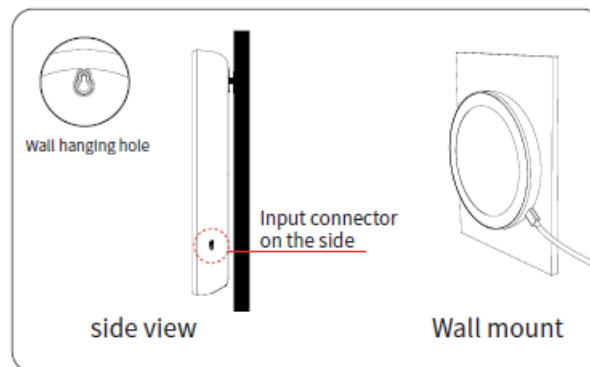
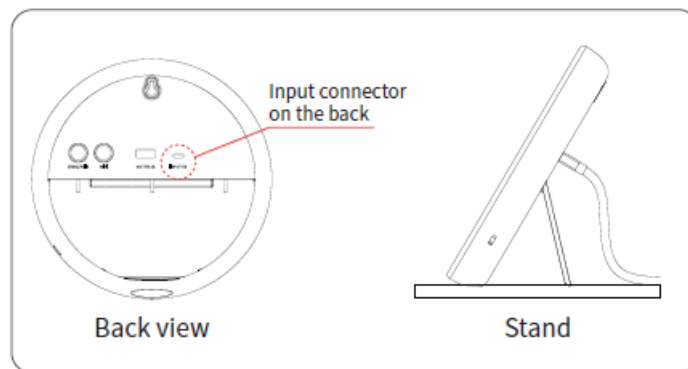


## Auxiliary machine features



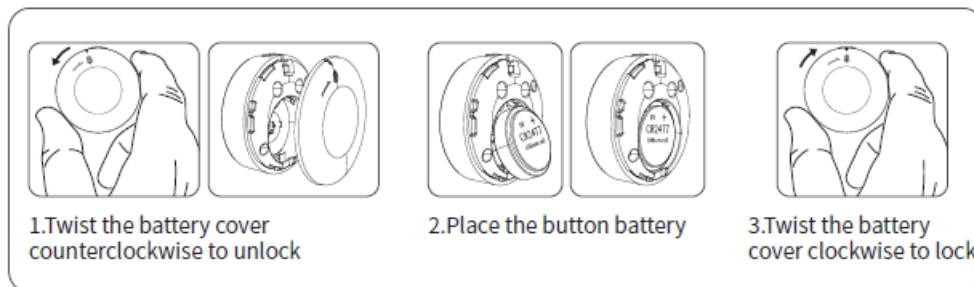
## Installation and placement

## Main machine installation

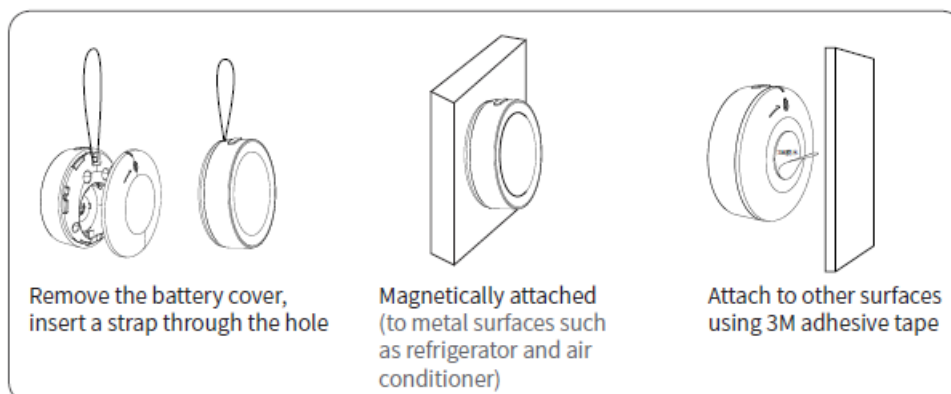


## Auxiliary machine battery replacement

\*The battery's positive pole "+" should face outward.




## Auxiliary machine placement



## Main machine & auxiliary machine installation

- 1.Place the main machine indoor.
- 2.Place the auxiliary machine indoor/outdoor. Make sure that the main machine and the auxiliary machine are within the communication distance.
- 3.Press the "SYNC/PAIR" button on the main machine to enter the data synchronization mode, and the buzzer will sound; press the button on the auxiliary machine, the auxiliary machine transmits data to the main machine. After the main machine receive the data, the buzzer will sound 3 times; repeat the step of pressing the button on the auxiliary machine until the main machine can't receive the data, the buzzer will no longer sound, indicating this is the optimal installation distance between the main machine and the auxiliary machine.

## Main machine & auxiliary machine synchronization and installation

- Once the battery is installed into the main machine, the icon " **CH123**  " will flash, indicating the main machine is in synchronization mode; press and hold the button on the auxiliary machine to synchronize with the main machine. You will hear a buzz after the successful connection. If you have only one auxiliary machine, you can press "SYNC/PAIR" to complete the synchronization mode, the screen will display the current channel of the auxiliary machine. If you have three auxiliary machines, repeat the above steps to synchronize with the other auxiliary machines' channel 2 and channel 3.
- During synchronization, press the button on the paired auxiliary machine, the main machine will display its icons and status, and the buzzer will sound for 3 times.
- During synchronization, press the "SYNC/PAIR" button on the main machine to disable the synchronization mode, and the buzzer will sound for 2 times.
- During operation mode, press the "SYNC/PAIR" button on the main machine to synchronize the data, press/press and hold the button on the paired auxiliary machine, the display on the main machine will switch to corresponding auxiliary machine channel, and the buzzer will sound for 3 times; if you have additional auxiliary machines that have not been paired, press and hold the button on the auxiliary machine to synchronize it with the unpaired channel and synchronize the data.
- Press and hold the "SYNC/PAIR" button to clear the data on all the auxiliary machine, and the buzzer will sound for 3 times.

## App operation

### App Download

Search “Smart Life” from APP store or scan the QR code to download and install the APP.


Please tap “register” to register for an account for the first use; tap “log in” if you already have an account.



### Bind Device

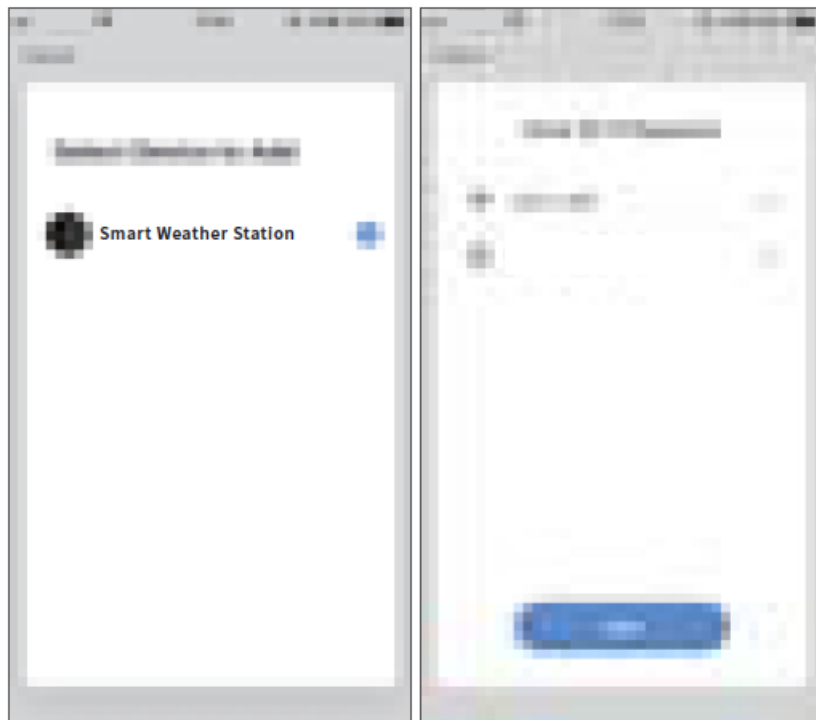
Before binding the device, turn on your phone's location, Wi-Fi, and Bluetooth function.  
Two methods to bind the device: auto scan or add manually.

#### Method One:Auto Scan

- 1.Open the APP and enter “My home” page, tap “+” .
- 2.Press the “Wi-Fi” button on the device for 3s until you hear the ticks and the icon “” on the screen flashes to enter the network configuration mode.
- 3.Available devices will be found, tap “add”.

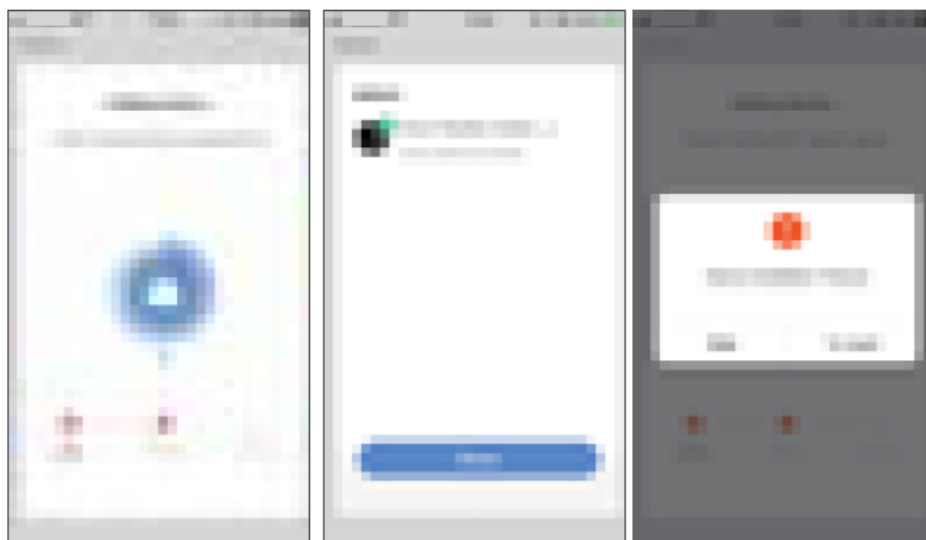


4. Select the “weather station” device, enter your Wi-Fi password, and then tap “next”.



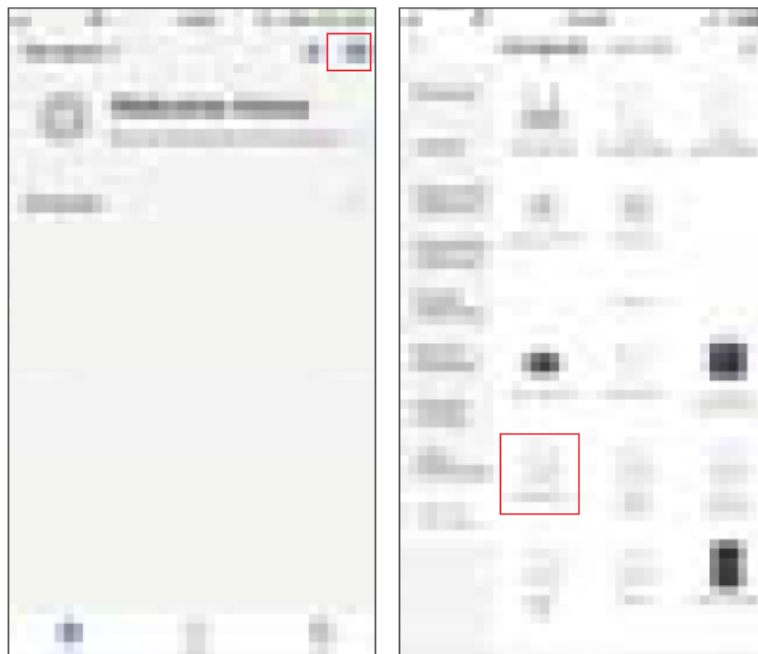
5. The connecting page is displayed. After the network is successfully connected, the device added successfully page will be displayed.

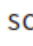
6. If the search timed out and no devices found, you can try again.



## Method Two:Add Manually

- 1.Open the APP and enter “My home” page, tap “+” in the upper right corner, and then select add manually.
- 2.Tap “others” in the “device list”; select “Wi-Fi” and follow the on-screen instruction to add the device.



- 3.Press the “Wi-Fi” button on the device for 3s until you hear the ticks and the icon “” on the screen flashes to enter the network configuration mode.
- 4.Make sure the device and your phone are connected to the same 2.4G network, enter the Wi-Fi password, and then tap “next”.
- 5.Tap “confirm the indicator rapidly flashes”, add the Bluetooth device. The connecting page will be displayed.

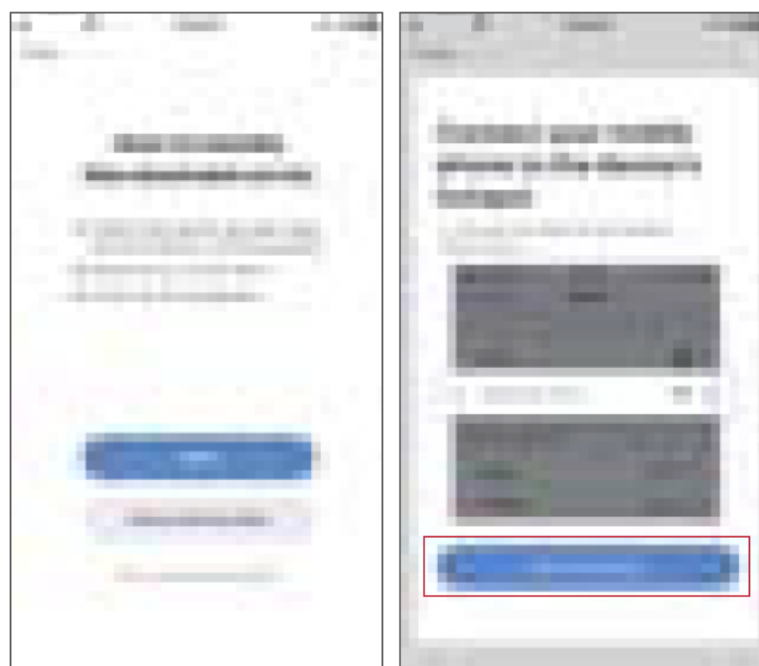





6. After the connection, tap “Done” to enter the main page.

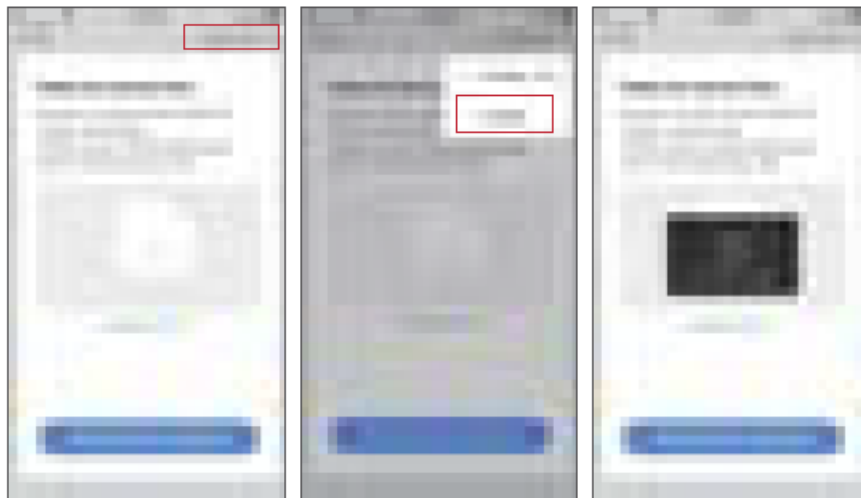


7.If the search timed out page is displayed, press and hold “Wi-Fi” button to switch the configuration method or repeat the steps above.



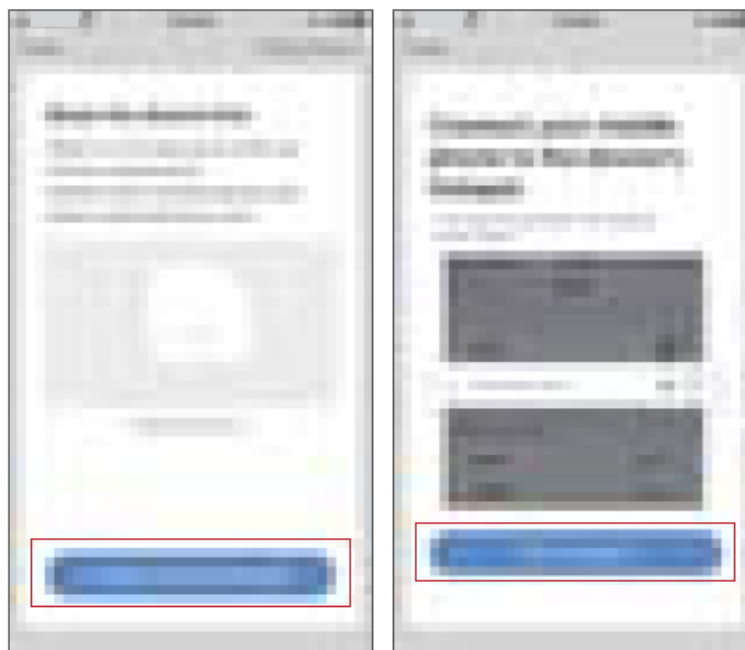
## 8. Hotspot configuration

1. Confirm the “” icon is slowly flashing, tap “AP Mode” to enter the Hotspot configuration mode.

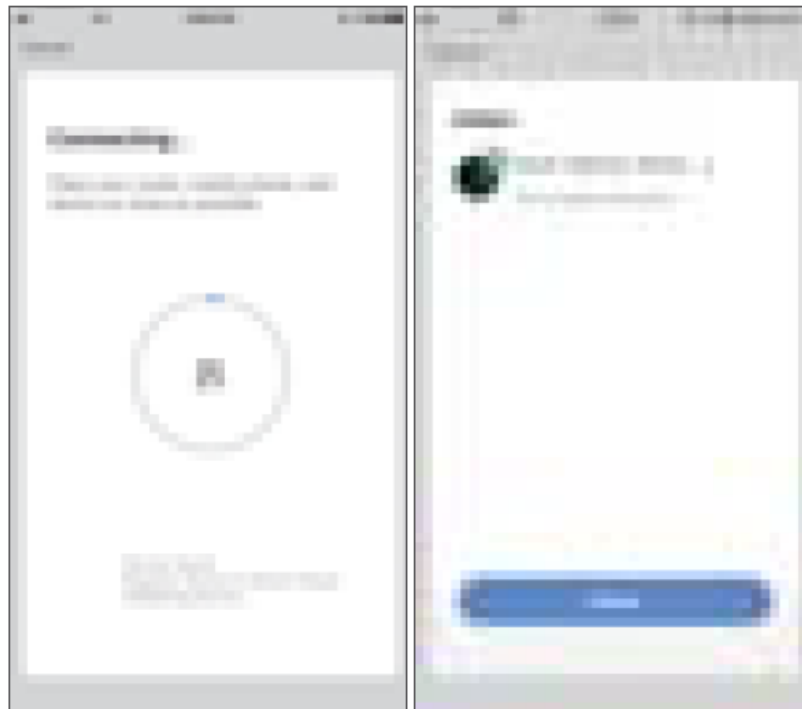


2. Enter the configuration page, tap “confirm indicator slowly blink”, and then tap “Go to Connect”.

3. Connect to the Hotspot “SmartLife\_xxxx”, go back to the App for automatic configuration.

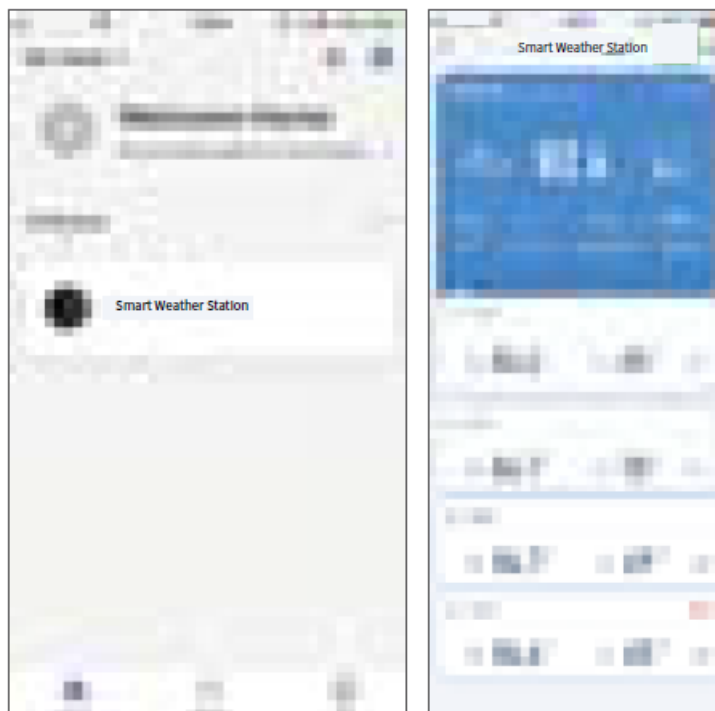


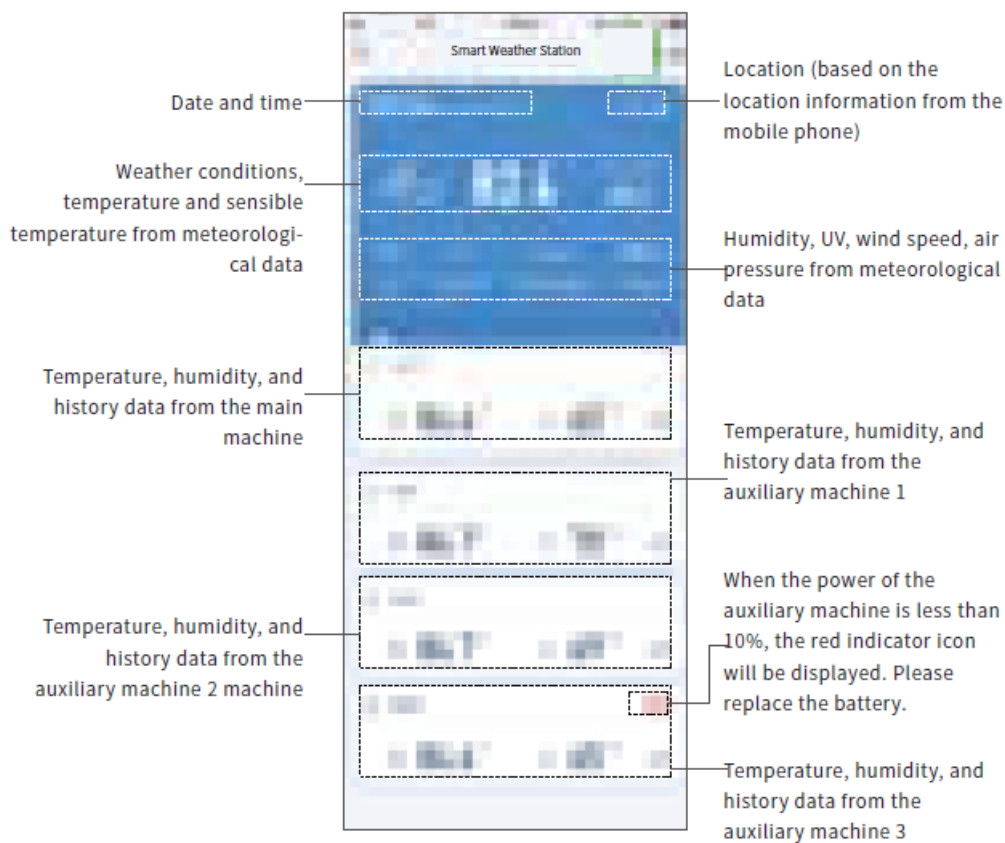
4.The connecting page is displayed; wait for the successful connection.



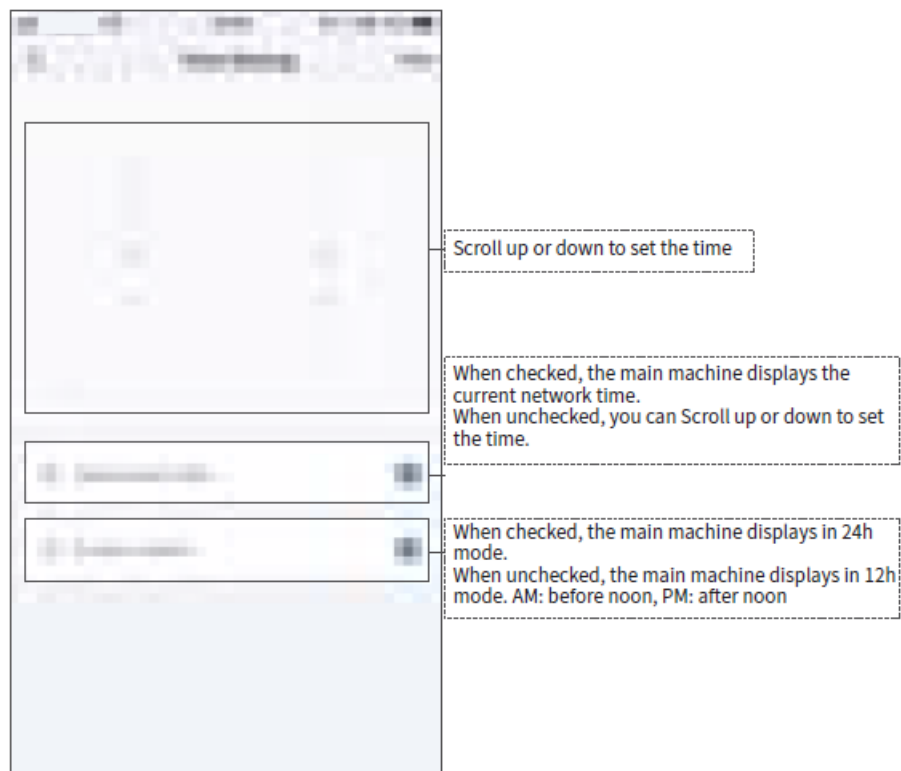
#### App control Panel introduction

1.Open the APP and enter “My home” page to check the connected device. Tap “Smart weather station” to enter the main page.

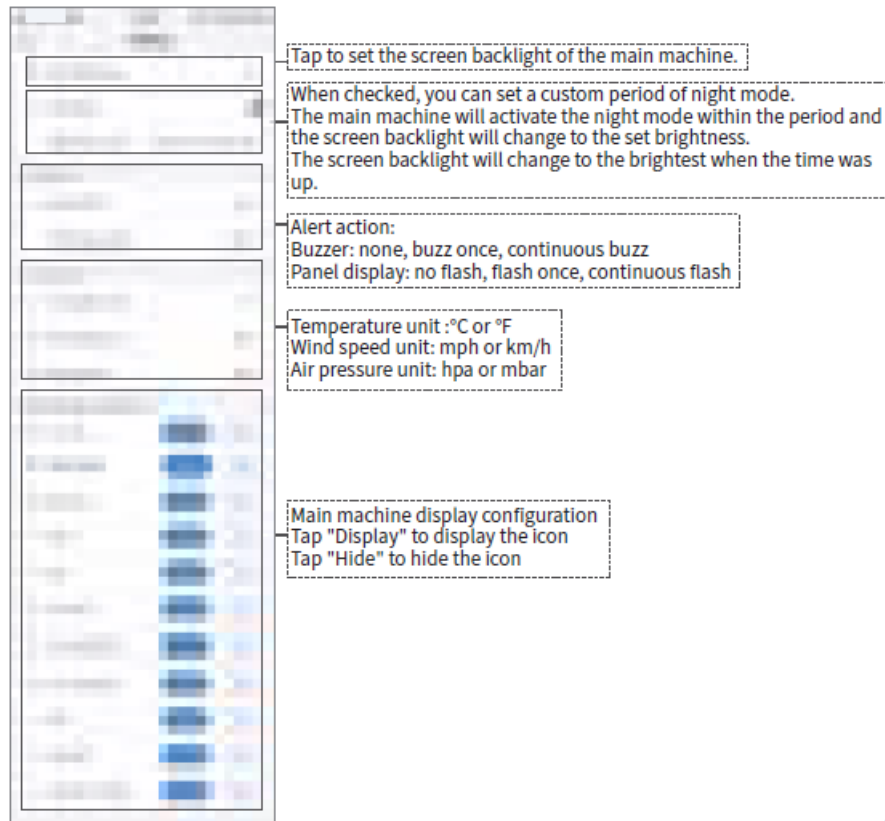




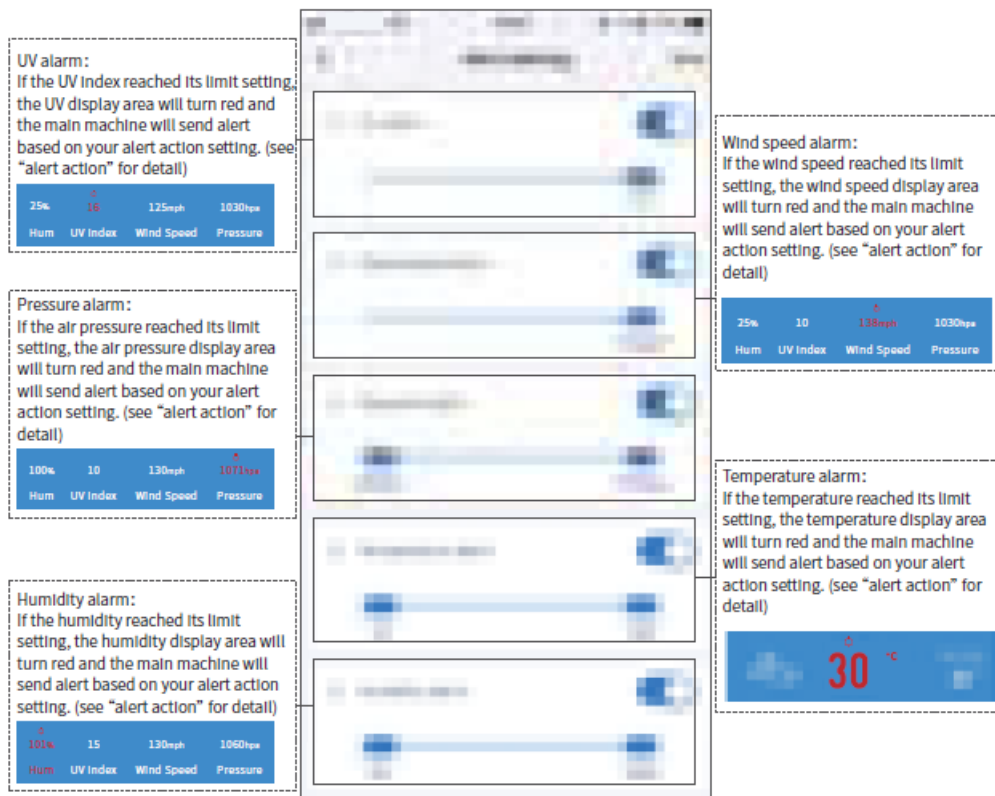
2. Tap the "Time and date" area to enter the "Time Setting" page. You can customize the settings as desired and then tap "save".



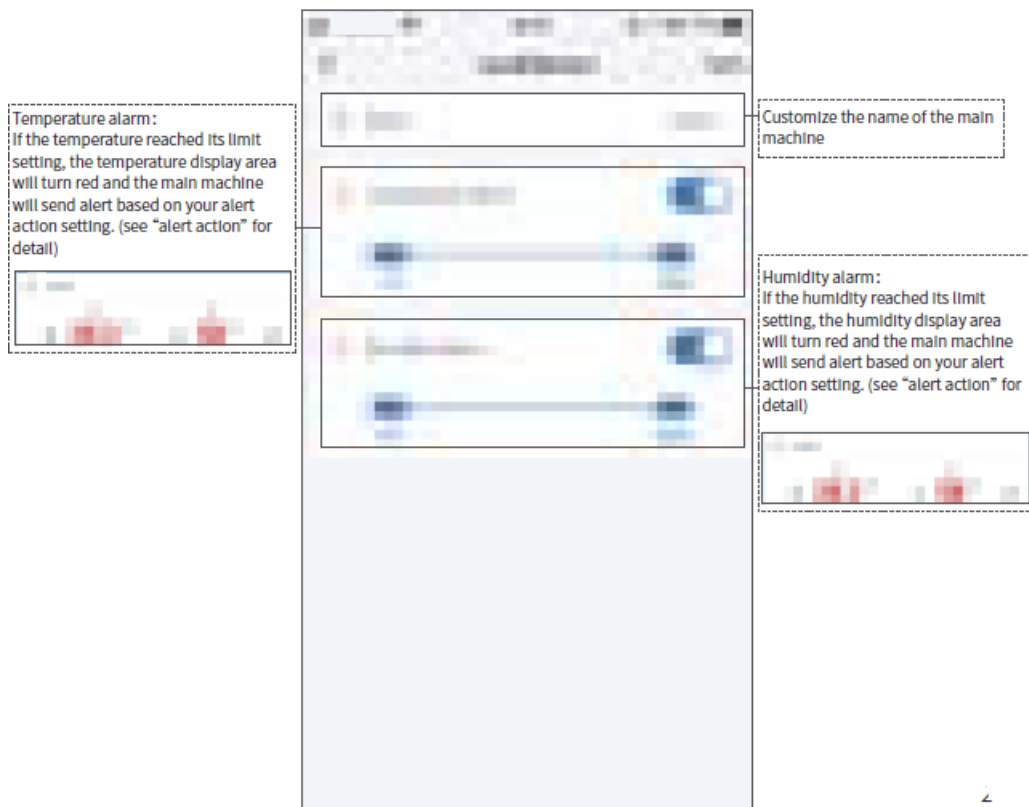
3. Tap the "Weather condition" area to enter the "Setting" page. You can customize the settings as desired and then tap "save".



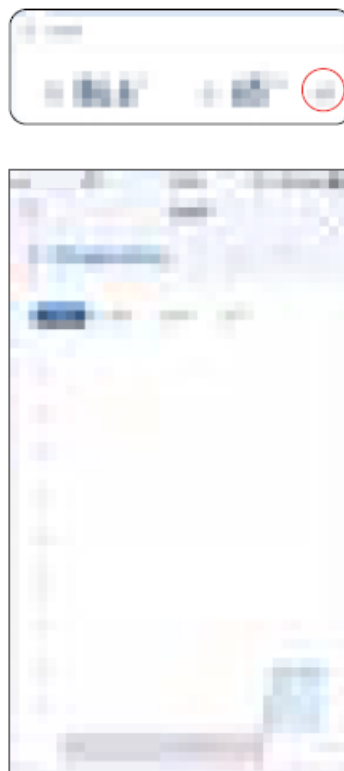
4. Tap the "Hum, UV index, Wind Speed, Pressure" area to enter the "Alert Setting" page. You can customize the settings as desired and then tap "save".



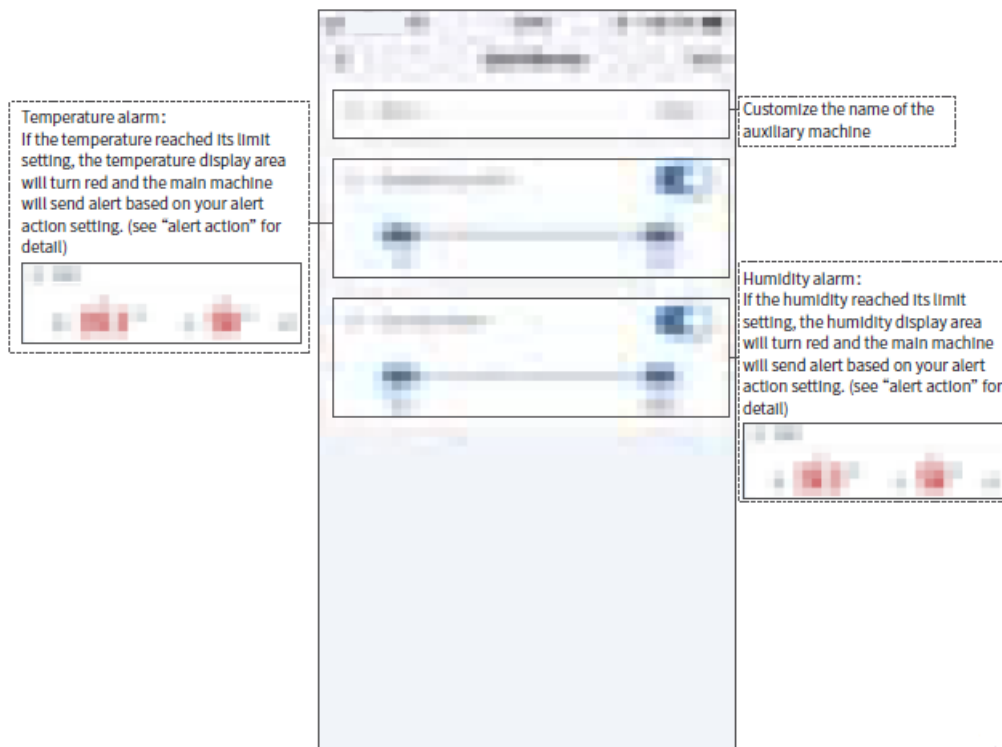
5. Tap the "Local temperature and humidity" area to enter the "Local Sensor" page. You can customize the settings as desired and then tap "save".



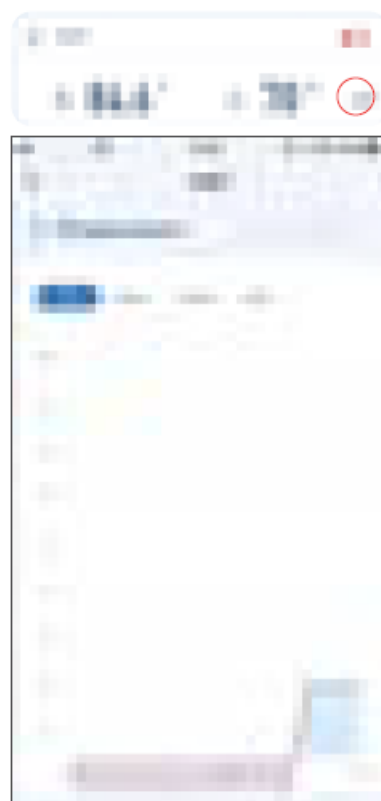
5.1 Tap the " " icon to check the maximum or minimum temperature and humidity history data from the main machine. (Day, week, month, and year)



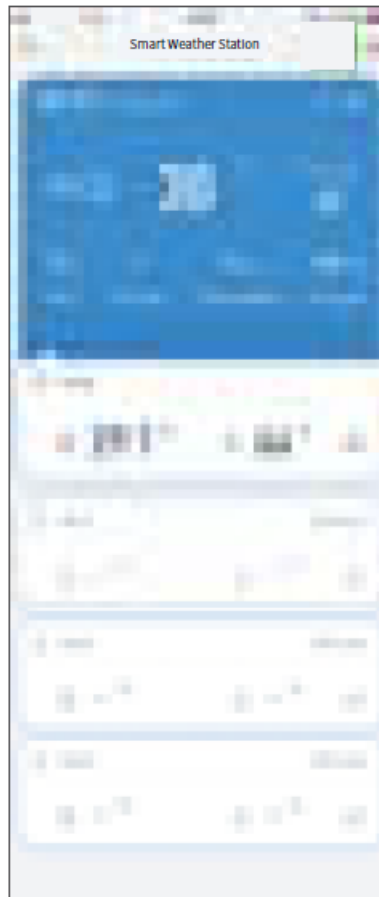
6. Tap the "Sub1 temperature and humidity" area to enter the "Sub1-Sensor" page. You can customize the settings as desired and then tap "save". (The same settings for auxiliary machine 1, 2, and 3.)



6.1 Tap the " " icon to check the maximum or minimum temperature and humidity history data from the auxiliary machine. (Day, week, month, and year)

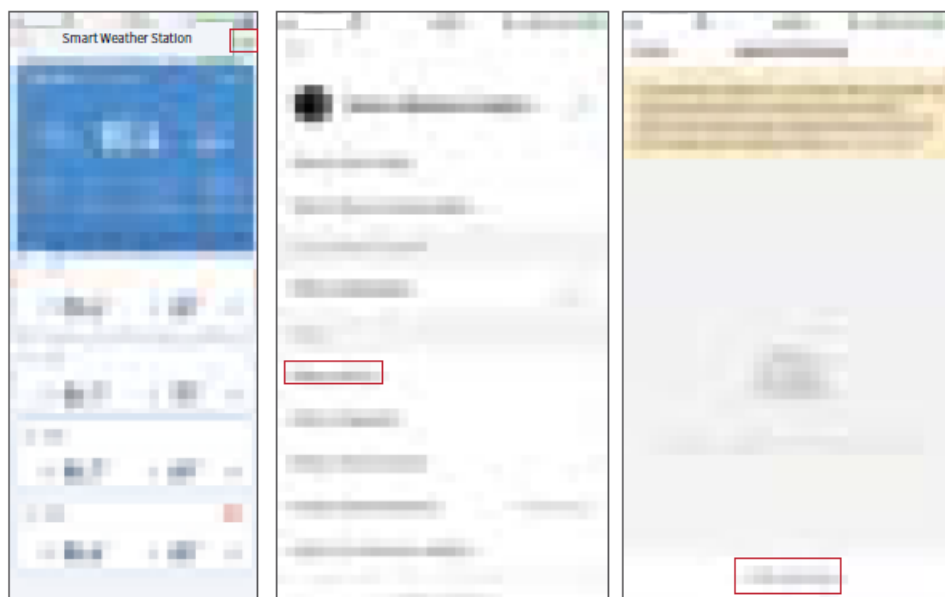


7. When the auxiliary machine is offline, the display area will be grey.



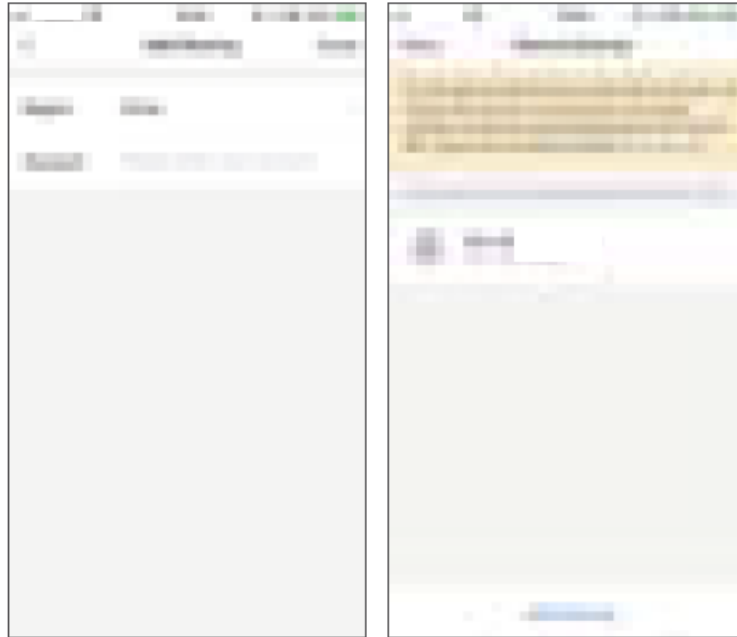
#### Share device

1. Go to the main page, tap the top right corner to enter the edit page; tap “share device”, and then tap “add sharing”.



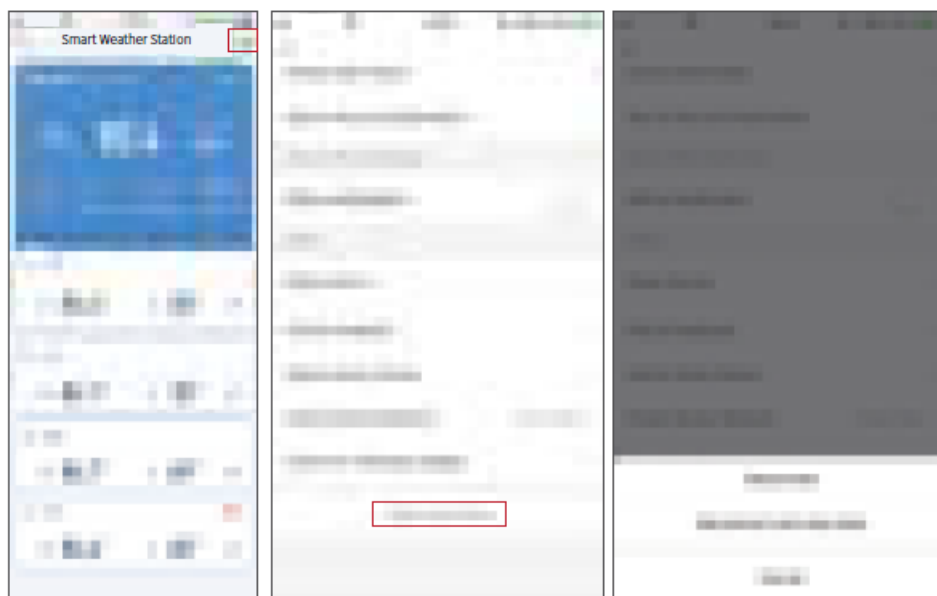


2. Enter the registered phone number, tap “Done” to share the device data.



#### Remove device

1. Go to the main page, tap the top right corner to enter the edit page;
2. Tap “Remove Device” to “Disconnect” or “Disconnect and wipe data”.



#### Specification

- Temperature display unit: °C /°F
- Humidity display unit: RH%
- Temperature range: -20°C—60°C Humidity Accuracy: ±0.2 °C
- Humidity range: 0%-99% Temperature Accuracy: ±2 %RH
- Operational temperature range: -20°C—60°C
- Output: USB-A 5V 1A
- Network configuration: Wi-Fi-2.4G
- Input: Micro USB 5V 2A
- Power supply of the auxiliary machine: 3V 1000mA, CR2477 button cell
- Standby Current: About 6uA for auxiliary machine
- Standby Time: 6 months for auxiliary machine

## Package List

Main machine×1	Adapter×1
Auxiliary machine×1	3M adhesive tape×1
Power cable×1	User guide×1

## Troubleshooting

### 1、Fail to connect to the Wi-Fi?

Answer: ①Weak Wi-Fi signal might impede the connection.

②Confirm if the Wi-Fi is 2.4G network. (5G is not allowed).

③Press and hold the Wi-Fi reset button for 5s to re-enter the configuration mode.

### 2、Fail to collect the weather data via Wi-Fi?

Answer: Re-power the main machine. After the Wi-Fi is successfully connected, the machine will collect the weather data automatically; if the Wi-Fi is disconnected during use, the machine will automatically collect the weather data with a interval of 30 minutes after the Wi-Fi is reconnected.

### 3、The main machine does not display the data of the auxiliary machine?

Answer: Press the "SYNC/PAIR" button on the main machine, and then press the button at the top of the auxiliary machine to synchronize the data.

RF Exposure Warning Statements: (Just for the indoor weather station main machine)

This equipment complies with FCC radiation exposure limits set forth for an uncontrolled environment. This equipment shall be installed and operated with minimum distance 20cm between the radiator & body.

4、 Fail to synchronize the main machine with the auxiliary machine?

Answer: Check the battery power; re-install the battery if needed. Press the "SYNC/PAIR" button on the main machine, and then press and hold the button at the top of the auxiliary machine to synchronize the main machine with the auxiliary machine.

5、 The auxiliary machine is offline?

Answer: Check if there is any metallic objects nearby. Place the machine away from metallic objects, the auxiliary machine will automatically reconnect. Or press the "SYNC/PAIR" button on the main machine, and then press and hold the button at the top of the auxiliary machine to reconnect.

6、 How to add a new auxiliary machine?

Answer: Press the "SYNC/PAIR" button on the main machine, and then press and hold the button at the top of the auxiliary machine, you will hear the main machine buzzing, the auxiliary machine will be synchronized to an unpaired channel. A main machine can pair three auxiliary machines at most.

## Certification

### FCC Information

This device complies with part 15 of FCC rules. Operation is subject to the following two conditions:

- 1- This device may NOT cause harmful interference, and
- 2- This device must accept any interference received, including interference that may cause undesired operation.

WARNING: Changes or modifications to this unit not expressly approved by the party responsible for compliance could void the user's authority to operate the equipment.

NOTE: This equipment has been tested and found to comply with the limits for a Class B digital device, pursuant to Part 15 of the FCC rules. These limits are designed to provide reasonable protection against harmful interference in a residential installation. This equipment generates, uses and can radiate radio frequency energy and, if not installed and used in accordance with the instructions, may cause harmful interference to radio communications. However, there is no guarantee that interference will not occur in a particular installation.


If this equipment does cause harmful interference to radio or television reception, which can be determined by turning the equipment off and on, the user is encouraged to try to correct the interference by one or more of the following measures:

- Reorient or relocate the receiving antenna.
- Increase the separation between the equipment and the receiver.
- Connect the equipment into an outlet on a circuit different from that to which the receiver is connected.
- Consult the dealer or an experienced radio/TV technician for help.

NOTE: The manufacturer is not responsible for any radio or TV interference caused by unauthorized modifications to this equipment. Such modifications could void the user authority to operate the equipment.



**Documents / Resources**

	<p><a href="#">Shenzhen Juku Intelligent Technology SWS-V000 Smart Weather Station with Clock</a> [pdf]</p> <p>User Guide</p> <p>SWS-V000, SWSV000, 2ARPESWS-V000, 2ARPESWSV000, SWS-V000 Smart Weather Station with Clock, SWS-V000, Smart Weather Station with Clock</p>
---	--