



Shenzhen Interthings Technology IPC167 Rotative Camera Instruction Manual

[Home](#) » [Shenzhen Interthings Technology](#) » Shenzhen Interthings Technology IPC167 Rotative Camera
Instruction Manual 

Shenzhen Interthings Technology IPC167 Rotative Camera



Contents

- [1 What's included](#)
- [2 Parts of the Camera](#)
- [3 Initial Setup](#)
 - [3.1 Turning On the Camera](#)
 - [3.2 Installing the Memory Card](#)
 - [3.3 Camera Operation](#)
 - [3.4 Install the App](#)
- [4 Connecting Your IP Camera with the App](#)
- [5 Using the Tuya Smart App](#)
- [6 Other features](#)
- [7 Specification](#)
- [8 FCC STATEMENT](#)
- [9 Documents / Resources](#)
- [10 Related Posts](#)

What's included

①



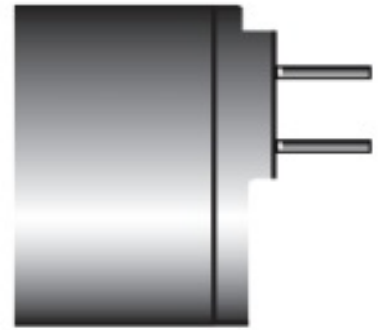
②



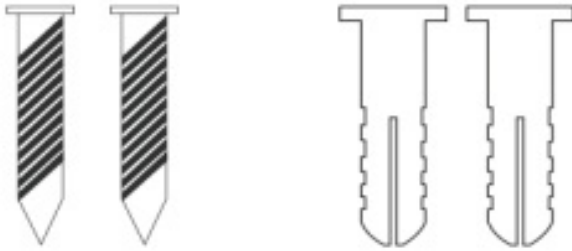
③



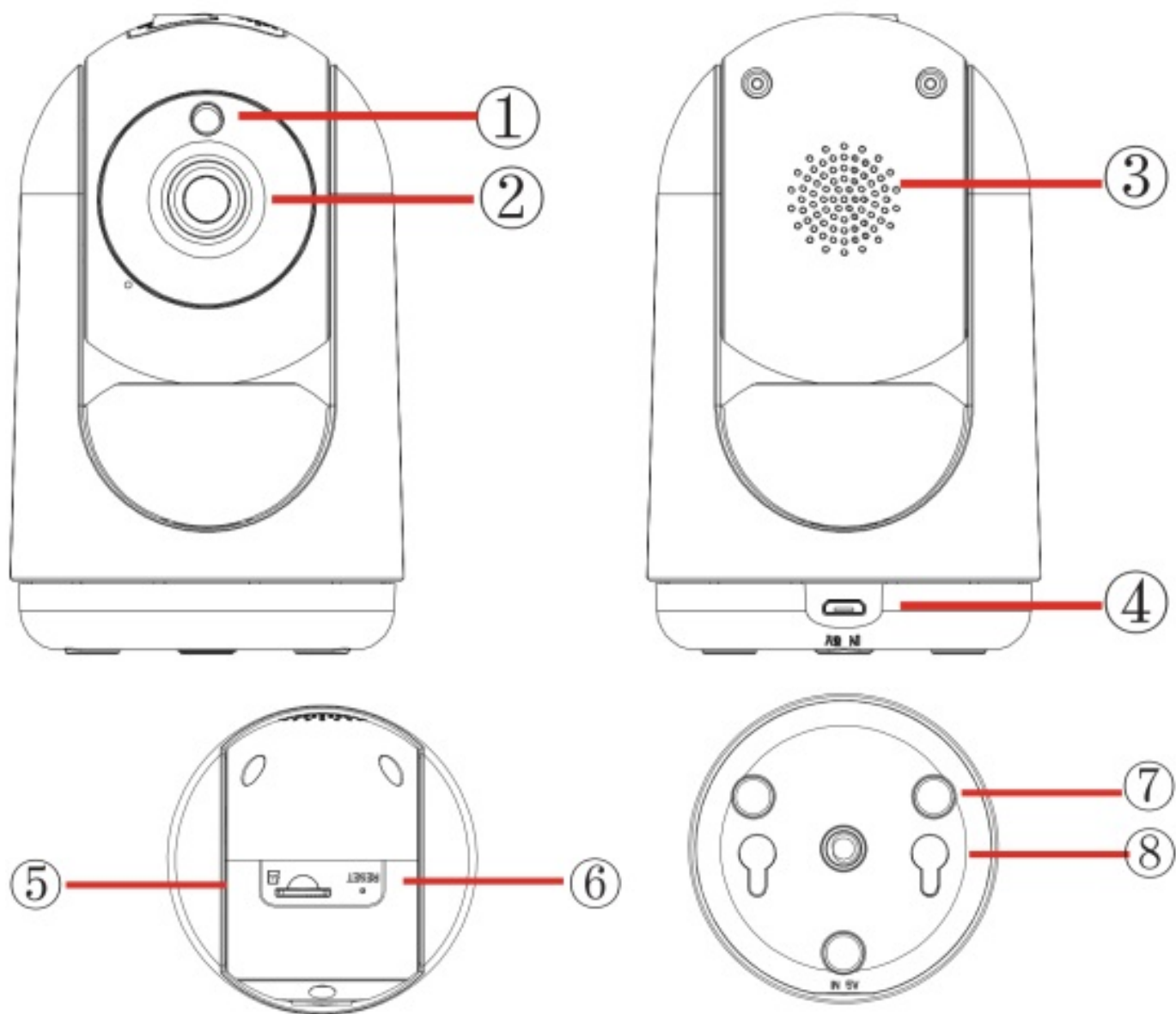
④



⑤



Parts of the Camera

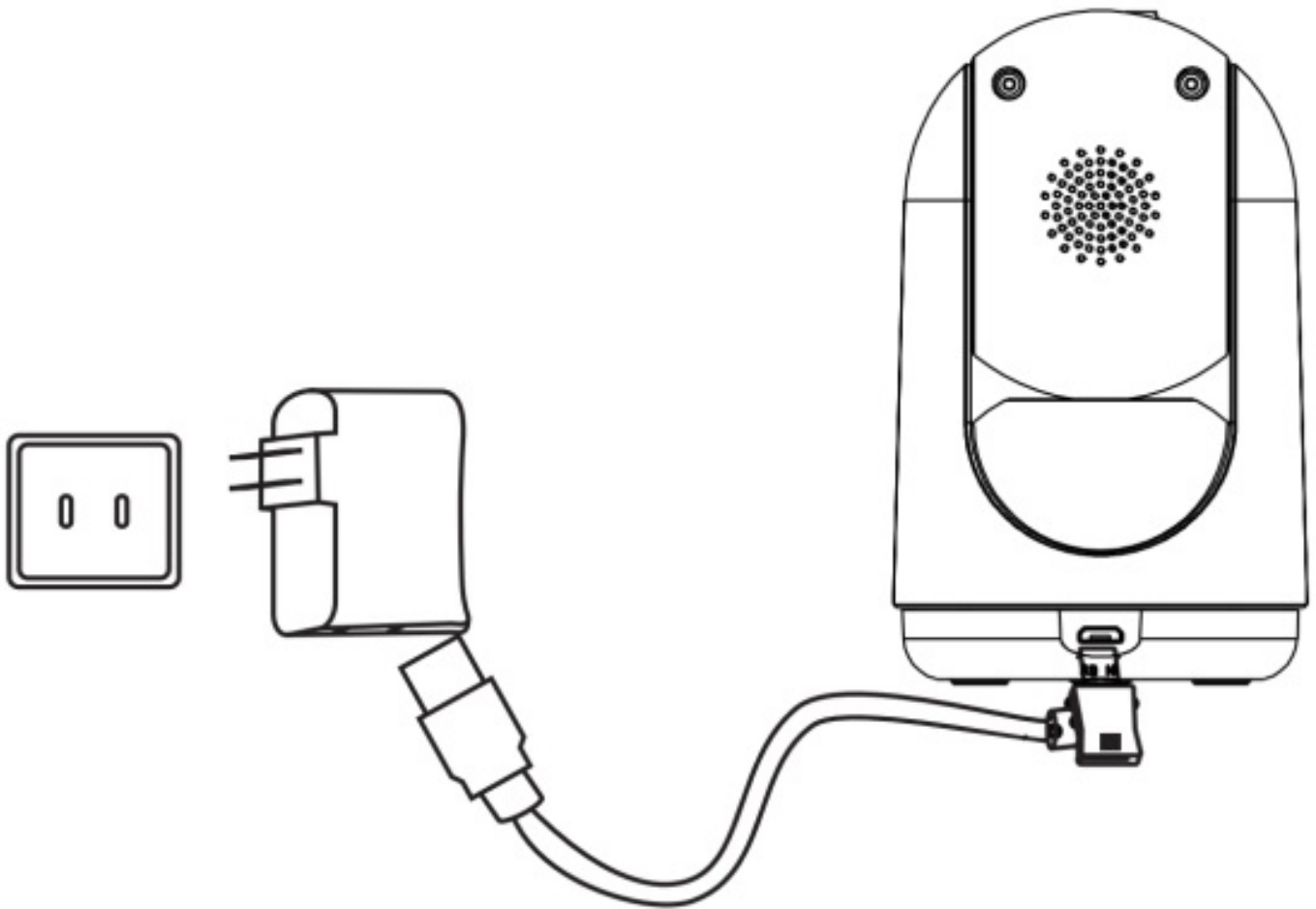


1. CDS sensor for night vision
2. Lens
3. Speaker
4. Micro USB
5. Micro SD Card Slot
6. Reset Button
7. Rubber Pad
8. Screw Hole

Initial Setup

Turning On the Camera

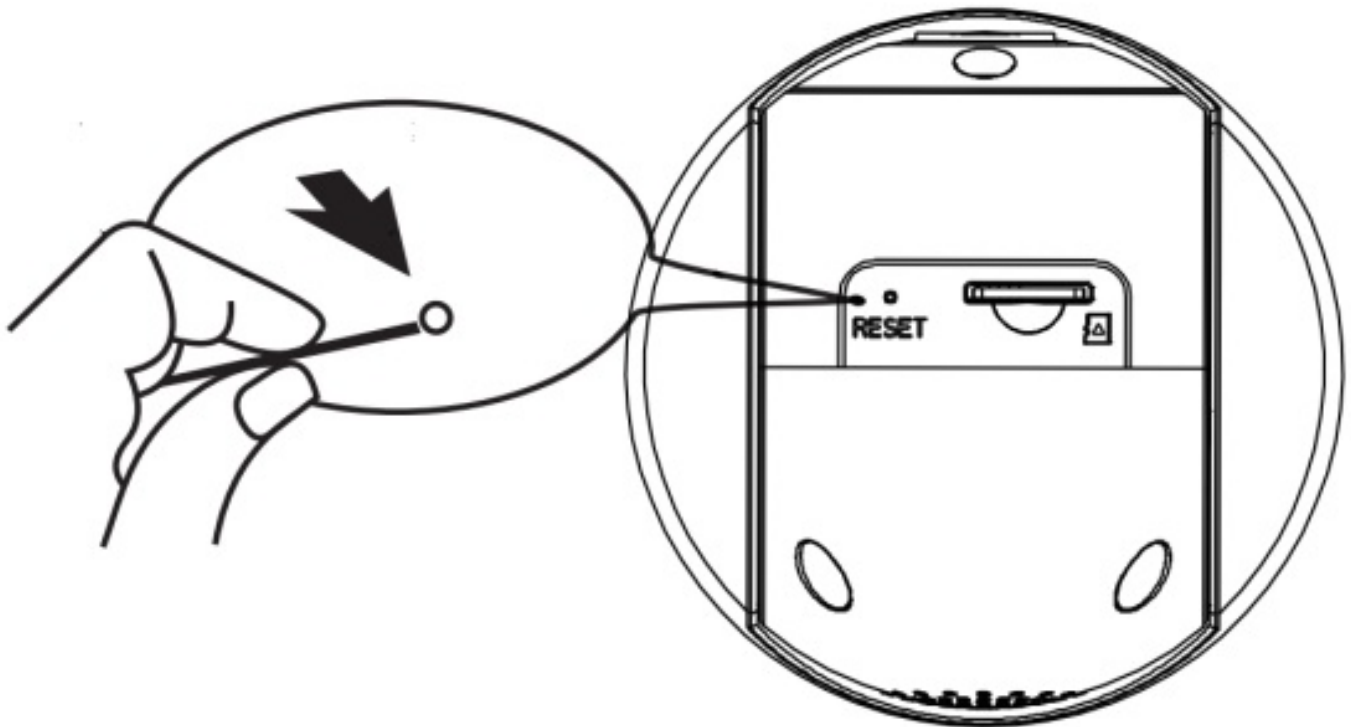
Connect the power supply with the IP camera and you will hear the sound 'camera' start.



If the camera is failed to connect, it needs to be reset.

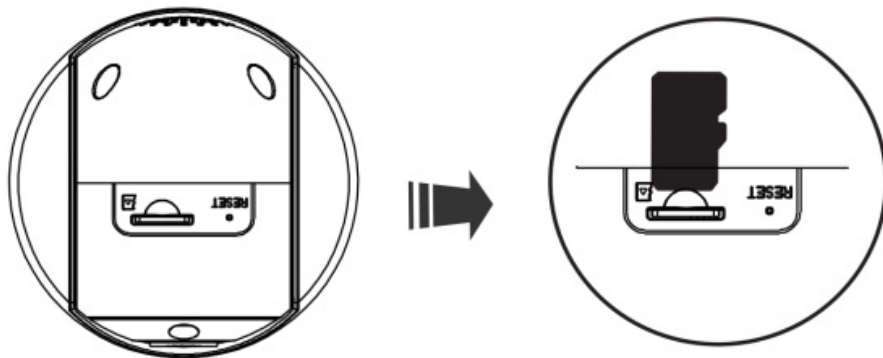
To reset the IP camera, use the reset pin to press the “Reset” hole on the top of the camera.

Press and hold until the camera automatically moving and hear the sound of ‘restore factory setting’. It will take around 15 seconds.



Installing the Memory Card

Class 4 or higher Micro SD memory card required (up to 32GB) for normal use.



Camera Operation

Preparations before use

Mobile device system requirements:

Android OS 4.4 or higher

iOS 9.0 or higher



Smart phone or tablet

IP Camera

Router

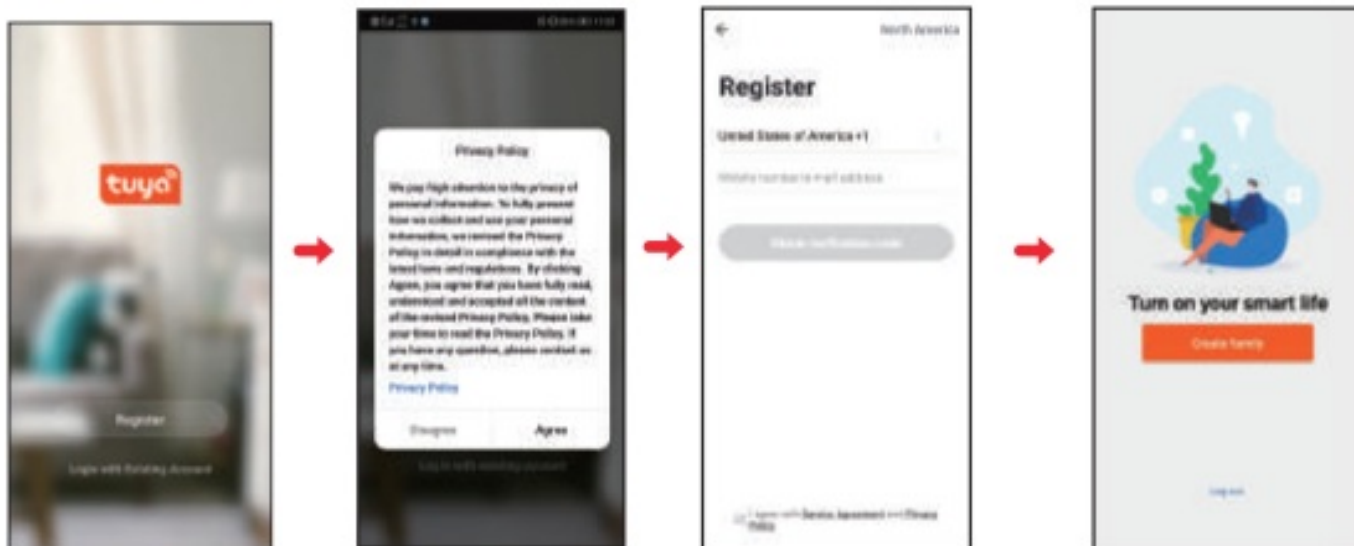
Install the App

Use your mobile phone or tablet to search for “TuyaSmart” in Google Play (for Android OS) or in the Apple app store(for iOS) to find the app, and install it according the instructions.



Register an account

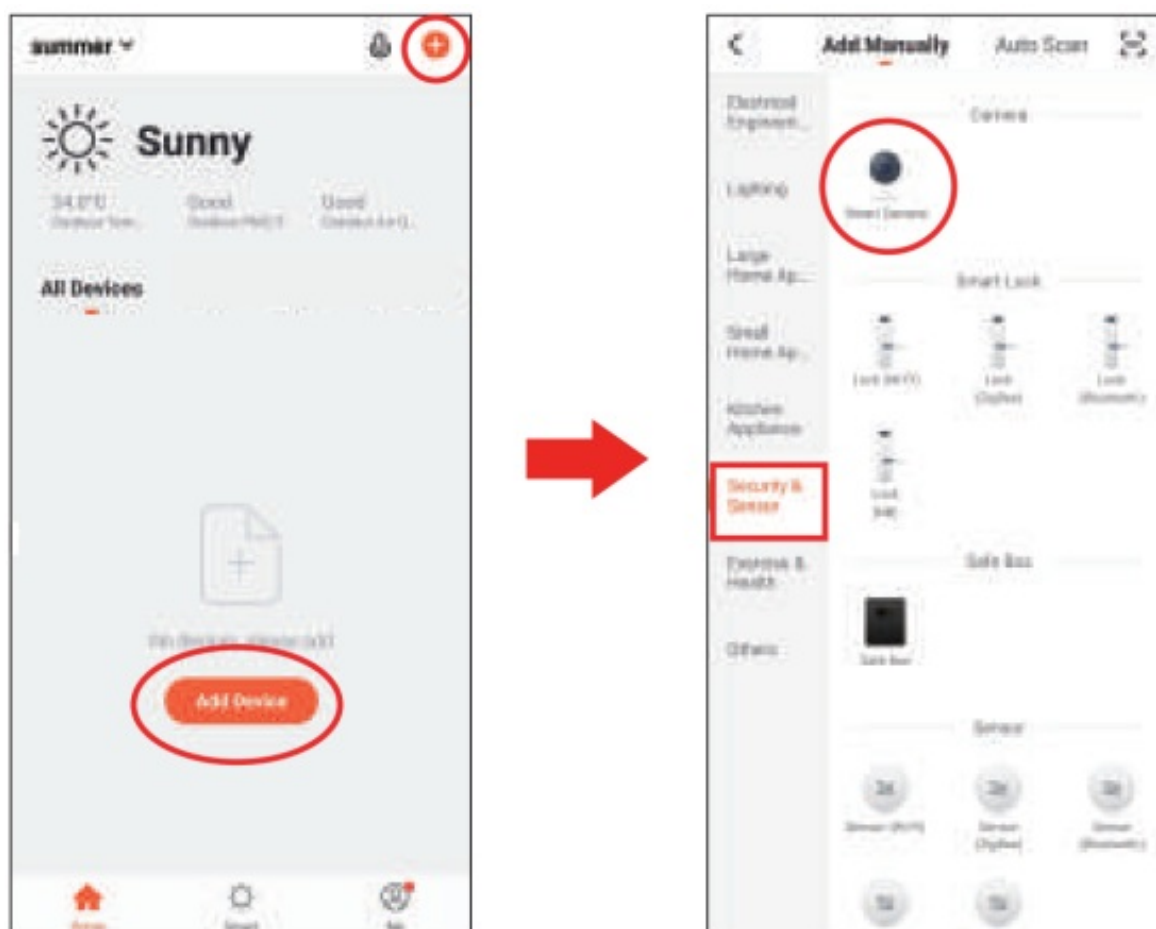
If this is the first time using the app, an account need to be registered as below:



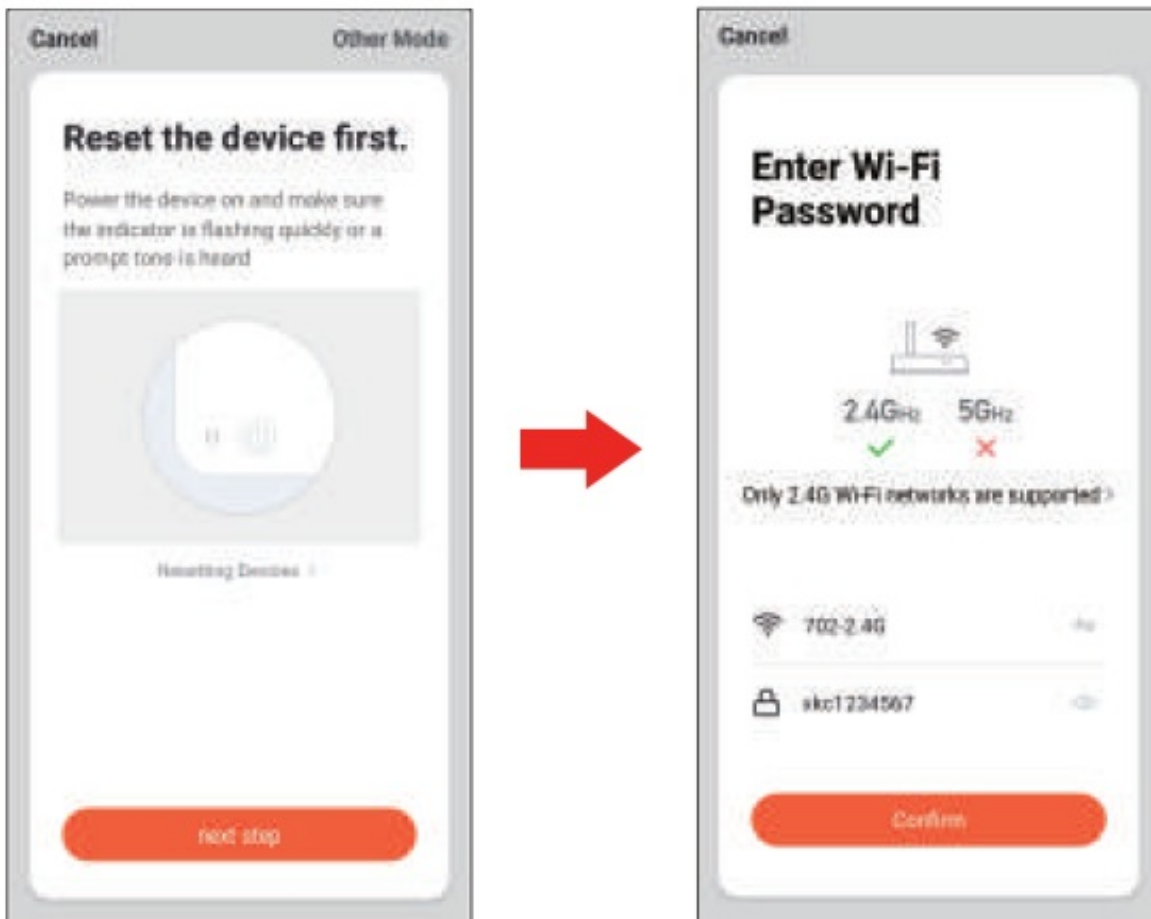
Connecting Your IP Camera with the App

Note: Your IPC Camera is supported only on a 2.4GHz Wi-Fi network. For setup, make sure your mobile device is connected to a 2.4GHz Wi-Fi network

1. After installing the app 'Tuya Smart', open the app and follow the prompts to setup the app.
Then tap '+' or 'Add Device' from the home page.
Tap 'Security & Sensor', then choose 'Smart Camera'.



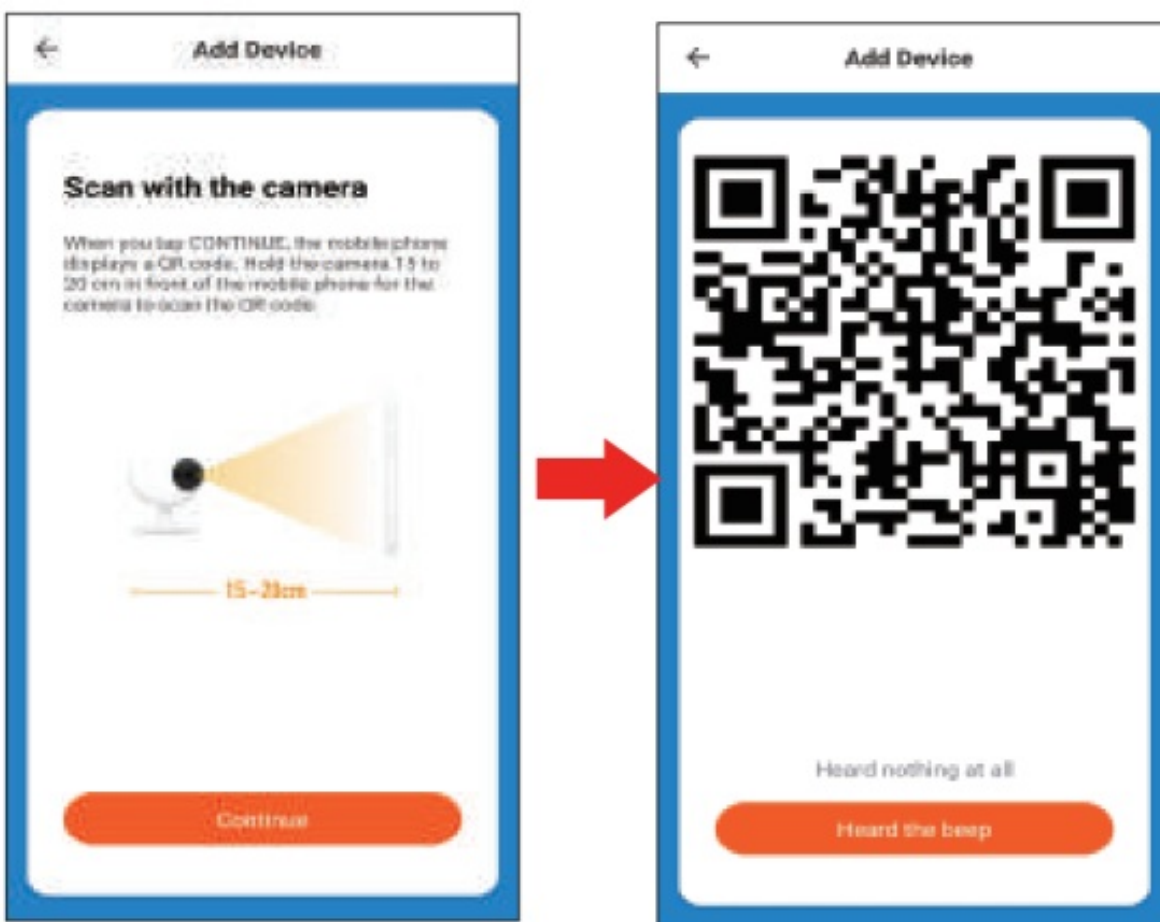
2. Power the device on and hear the sound of 'camera start'.
Make sure your smart device is connected to a 2.4G Wi-Fi network, then tap 'Confirm..'



3. The app will guide you to scan mobile device with the camera.

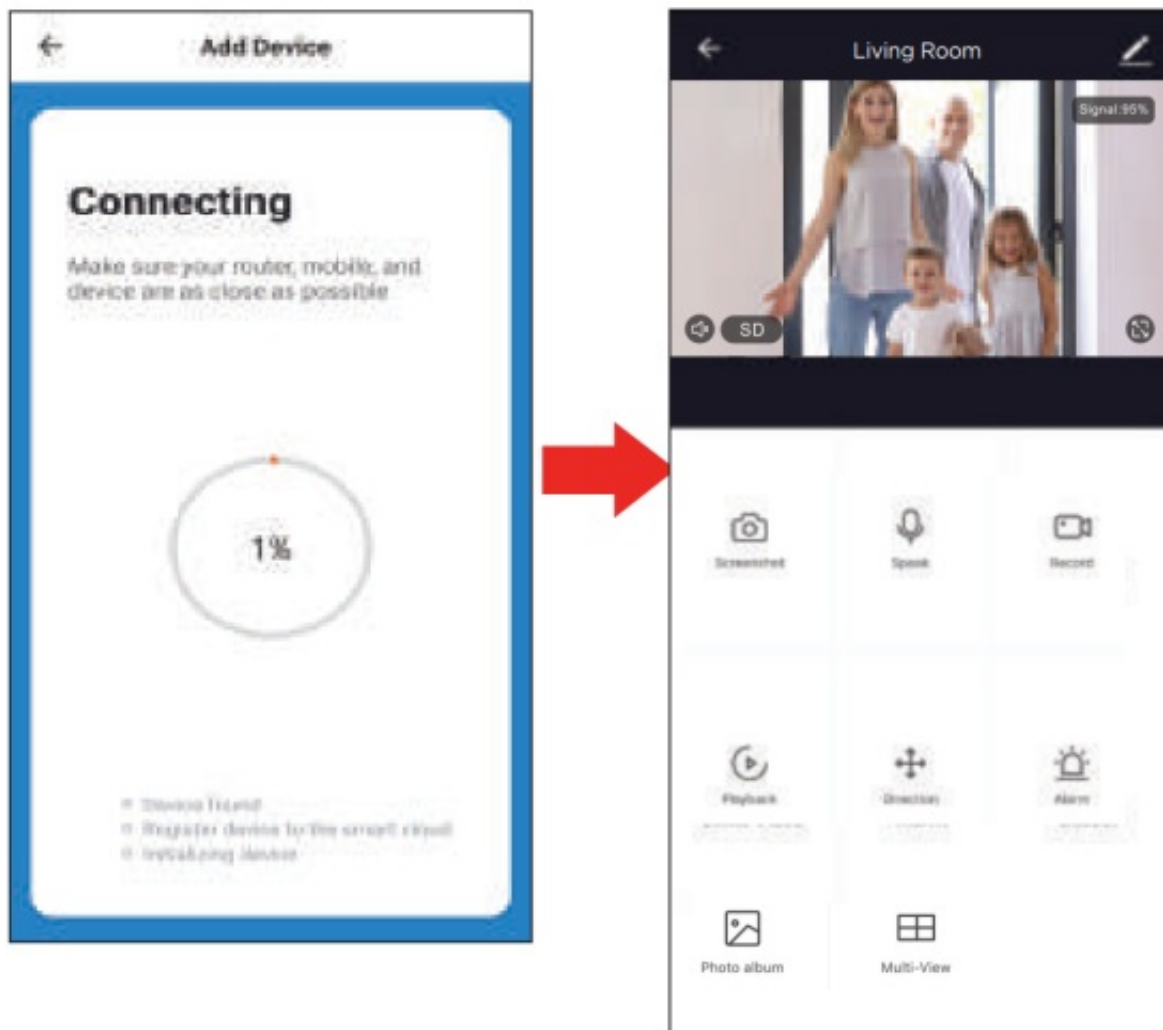
When you tap 'Continue' the mobile phone displays a QR code.

Hold the camera 15 to 20 cm in front of the mobile device for the camera to scan the QR code.

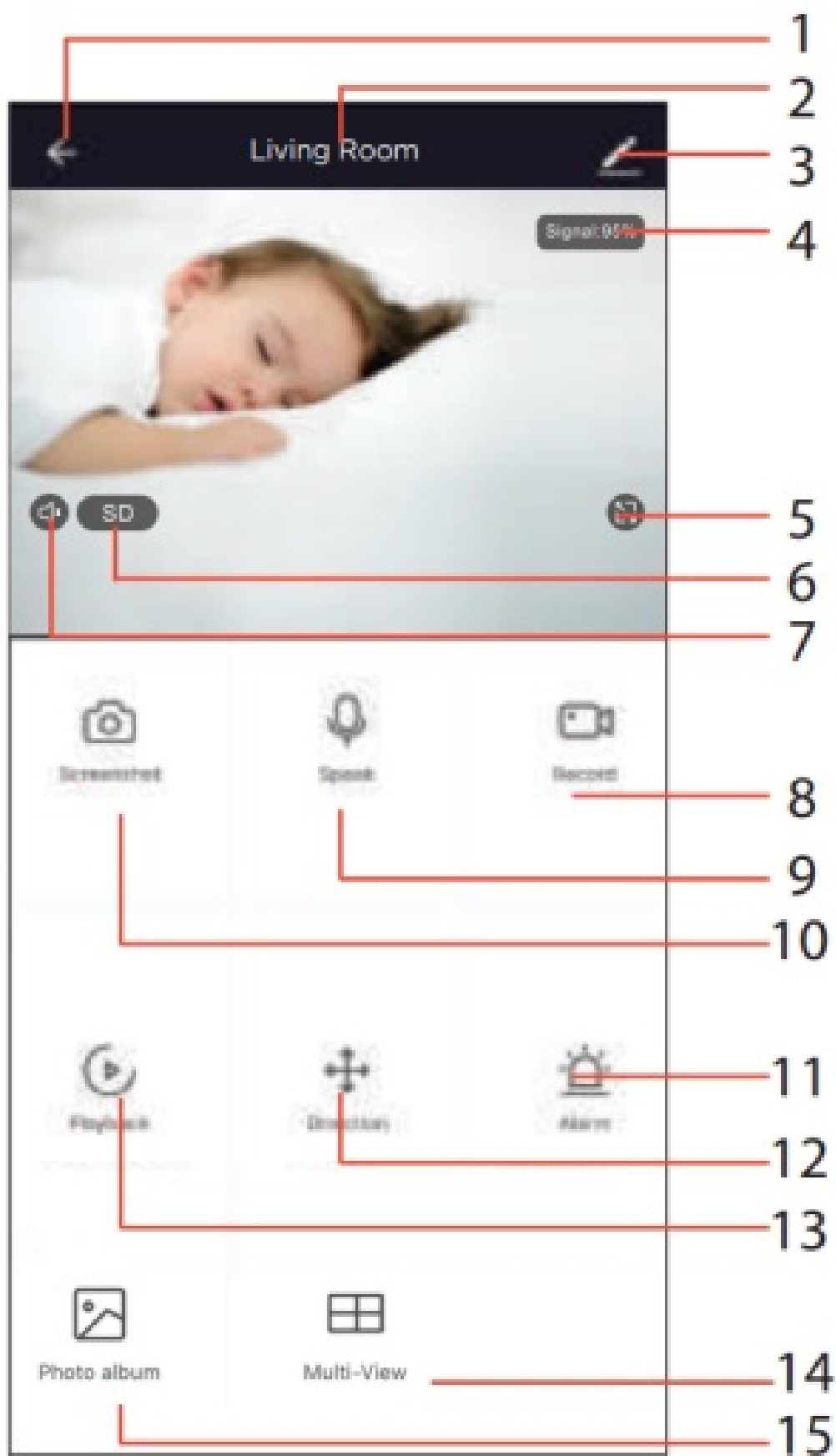


4. In connecting, make sure your router, mobile and device are as close as possible.

Once the camera get the information from mobile device, the camera will have a sound ‘camera configured’ which means the camera is connected successfully. Your camera’s Live Camera view with streaming video will be opened.



Using the Tuya Smart App



Live Camera View

1. Back to the home page
2. Device name
3. Settings

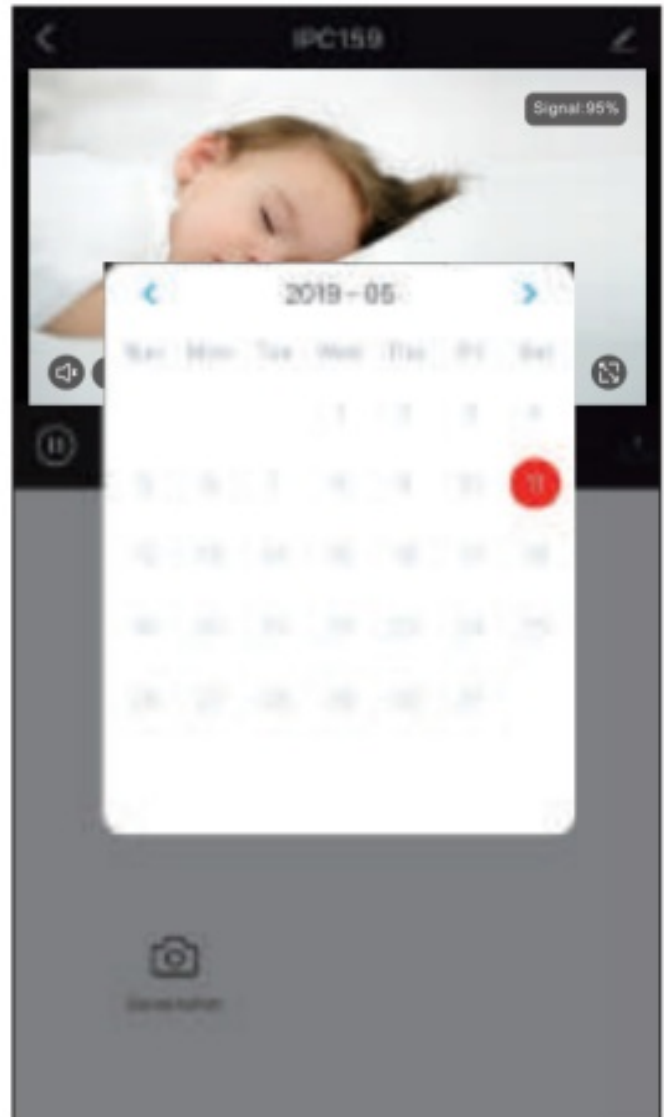
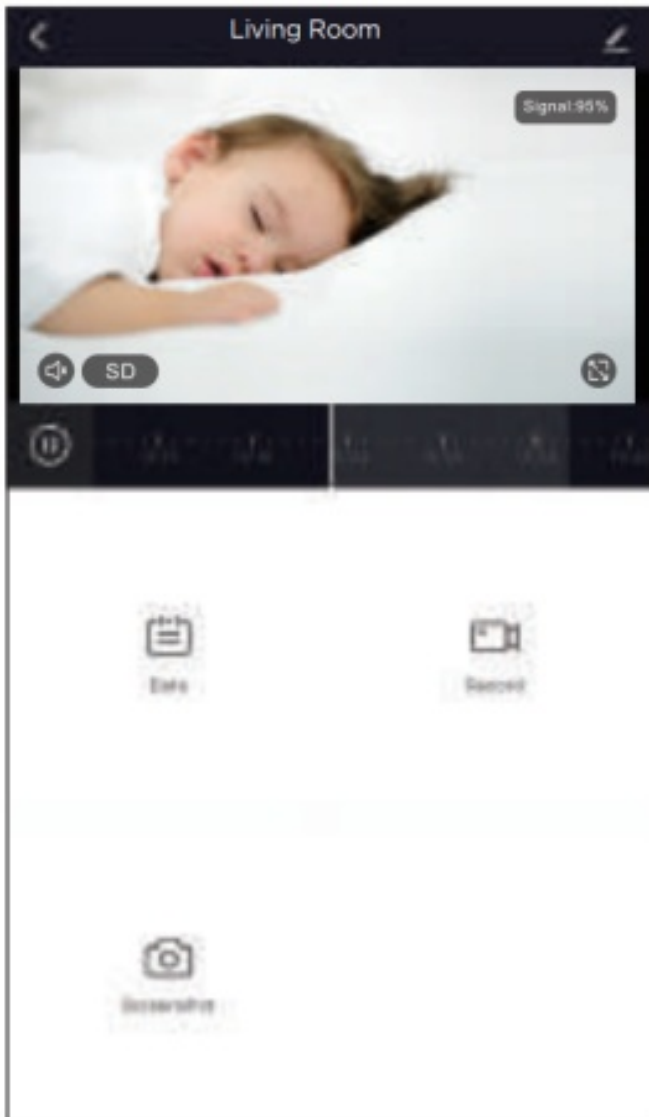
4. Wi-Fi signal
5. Switch to full screen
6. Image quality (SD/HD) switch
7. Speaker turn on/off
8. Record the view of the camera (video saved to your mobile device)
9. Speak to the camera
10. Screenshot of the live (photo saved to your mobile device)
11. Alarm (To turn on/off the motion detection alarm or choose the sensitivity of the motion detection.)
12. Direction of camera angle
13. Playback the local recorded video (Feature only available after inserted a memory card.)
14. Multi View for multi cameras' live stream showed on the monitor at once
15. Photo Album (To view the recorded images which saved in your mobile phone through the app)

Playback the Saved Files

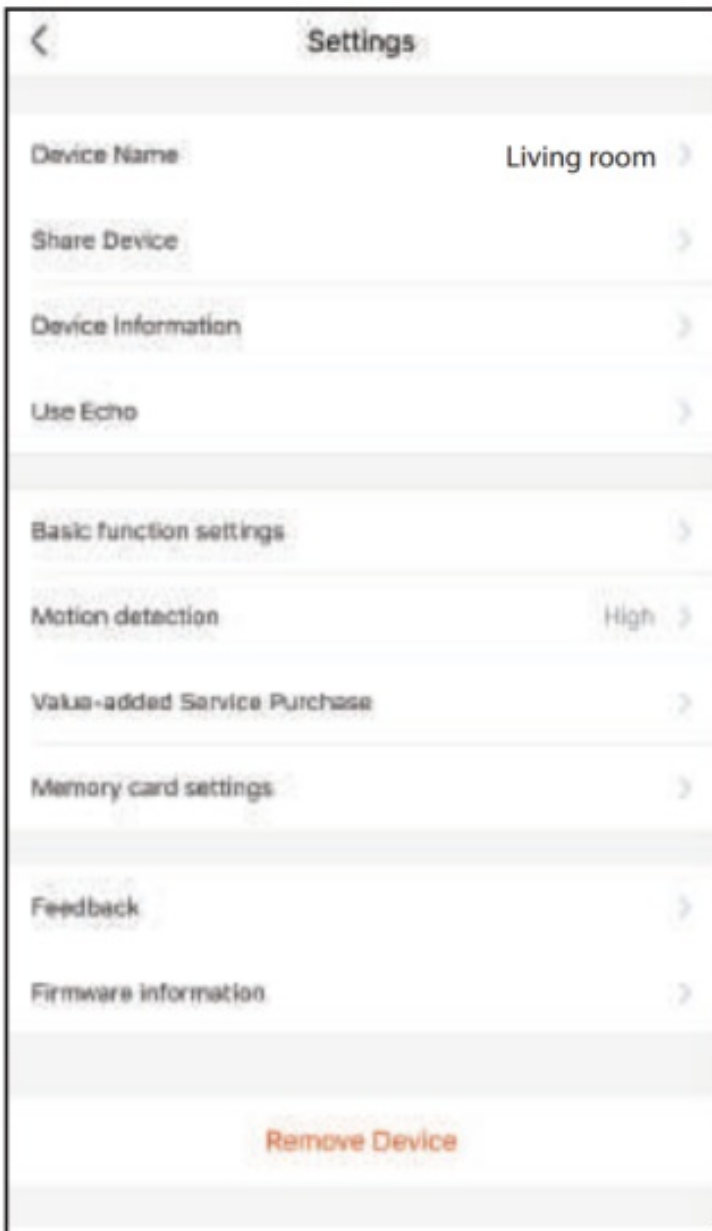
a) Choose the device, get into the live view, press the 'playback' (Only available when the micro SD card is inserted.)

b) Users could review the videos that have filmed by the camera.

c) Users could choose the date to review videos.



Camera Settings:



Device Name: Users could modify the device name.

Share Device: Users could share the device to your trusted-one.

Device Information: Users could see the device owner, IP address, device ID, etc.

Use Echo: Instruction for how to work with Amazon Alexa.

Basic Function Settings: Indicator light on/off, Flip screen, time watermark, speech method for one/two way talk.

Motion detection: User could switch on/off the motion detection alarm and set the sensitivity of motion detection.

Memory card settings: Users could check the memory of the card and wipe off the SD card memory.

Value-added Service Purchase: Cloud storage service for users.

(Subscription fee would be charged for this function.)

Feedback: Users could submit problems or advices to the service provider to optimize the service.

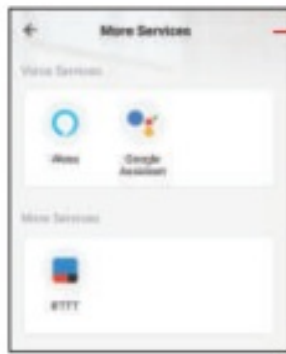
Firmware Information: To view the information of current and previous firmware version.

Remove Device:

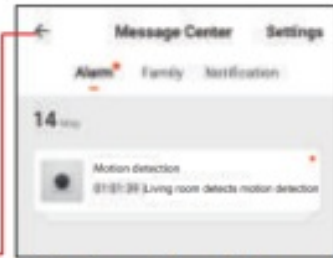
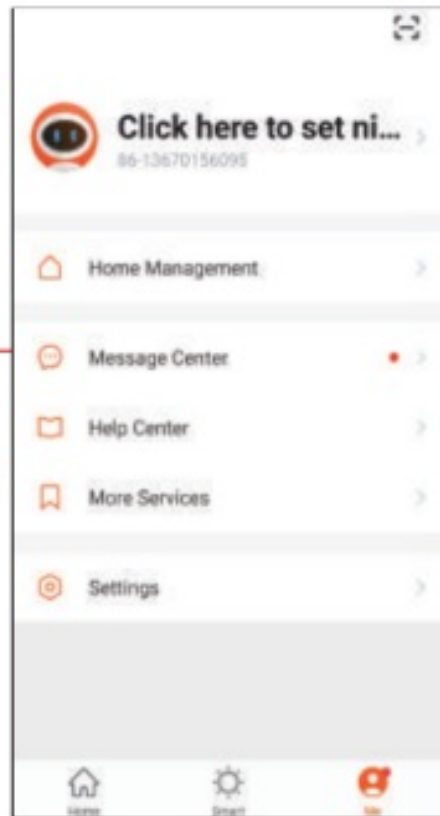
a) When users want to change the internet connection, please press 'Remove Device' and reset the camera to repairing with new Wi-Fi.

b) No longer to use the camera.

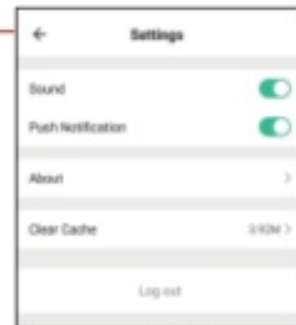
Other features



'More services' supports you to find the instructions regarding the 'Alexa', 'Google Assistant' and 'IFTTT' features.



Review the 'Alarm', 'Family' and 'Notification' events.



Turn on/off the alarm of 'Sound' and 'Push Notification'

Specification

Installation	Wall hanging, desktop
Sensor	1/2.9" CMOS
Resolution	2MP, 1920(H)*1080(V)
Frame	1080P*15fps
Focal Length	2.8mm
Lens Angle	100°
Rotative Angle	360°(H), 180°(V)
Video Compression Format	H.264
Compression Bit Rate	128 Kbps~2Mbps
Local Storage	Yes, micro SD card (up to 64GB)
Cloud Storage	Optional
Audio	Two-way audio
Power Supply	DC5V/1A
WiFi Antenna	2.4GHz
Operation Environment	-10°C 50°C,30% 80%RH

FCC STATEMENT

1. This device complies with Part 15 of the FCC Rules. Operation is subject to the following two conditions:
 - (1) This device may not cause harmful interference, and
 - (2) This device must accept any interference received, including interference that may cause undesired operation.
2. any Changes or modifications not expressly approved by the party responsible for compliance could void the user's authority to operate the equipment.

NOTE: This equipment has been tested and found to comply with the limits for a Class B digital device, pursuant to Part 15 of the FCC Rules. These limits are designed to provide reasonable protection against harmful interference in a residential installation.

This equipment generates uses and can radiate radio frequency energy and, if not installed and used in accordance with the instructions, may cause harmful interference to radio communications.


However, there is no guarantee that interference will not occur in a particular installation. If this equipment does cause harmful interference to radio or television reception, which can be determined by turning the equipment off and on, the user is encouraged to try to correct the interference by one or more of the following measures:

- Reorient or relocate the receiving antenna.
- Increase the separation between the equipment and receiver.
- Connect the equipment into an outlet on a circuit different from that to which the receiver is connected.
- Consult the dealer or an experienced radio/TV technician for help.

FCC Radiation Exposure Statement

This equipment complies with FCC radiation exposure limits set forth for an uncontrolled environment. This equipment should be installed and operated with minimum distance 20cm between the radiator & your body.

Documents / Resources

	Shenzhen Interthings Technology IPC167 Rotative Camera [pdf] Instruction Manual IPC167, 2AQ7B-IPC167, 2AQ7BIPC167, IPC167 Rotative Camera, Rotative Camera
---	---