



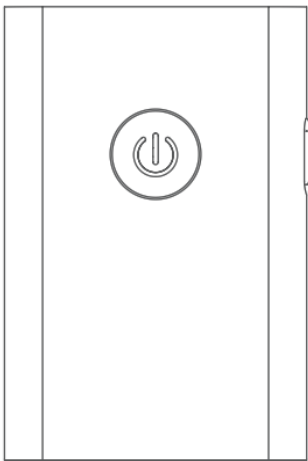
Shenzhen I Link Technology BT4810E Wireless Receiver Transmitter User Manual

[Home](#) » [Shenzhen I Link Technology](#) » Shenzhen I Link Technology BT4810E Wireless Receiver Transmitter User Manual 

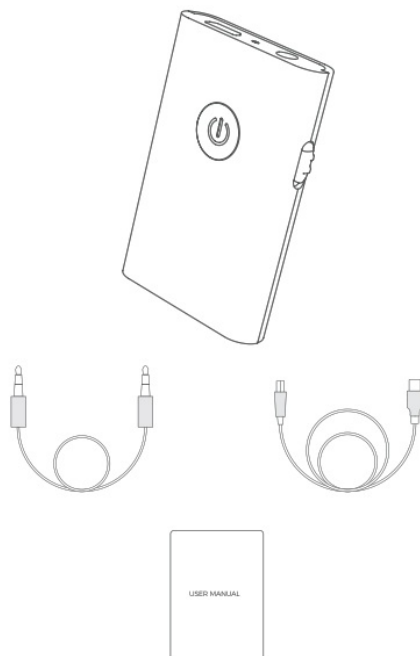


SHENZHEN

Wireless Receiver Transmitter



User Manual



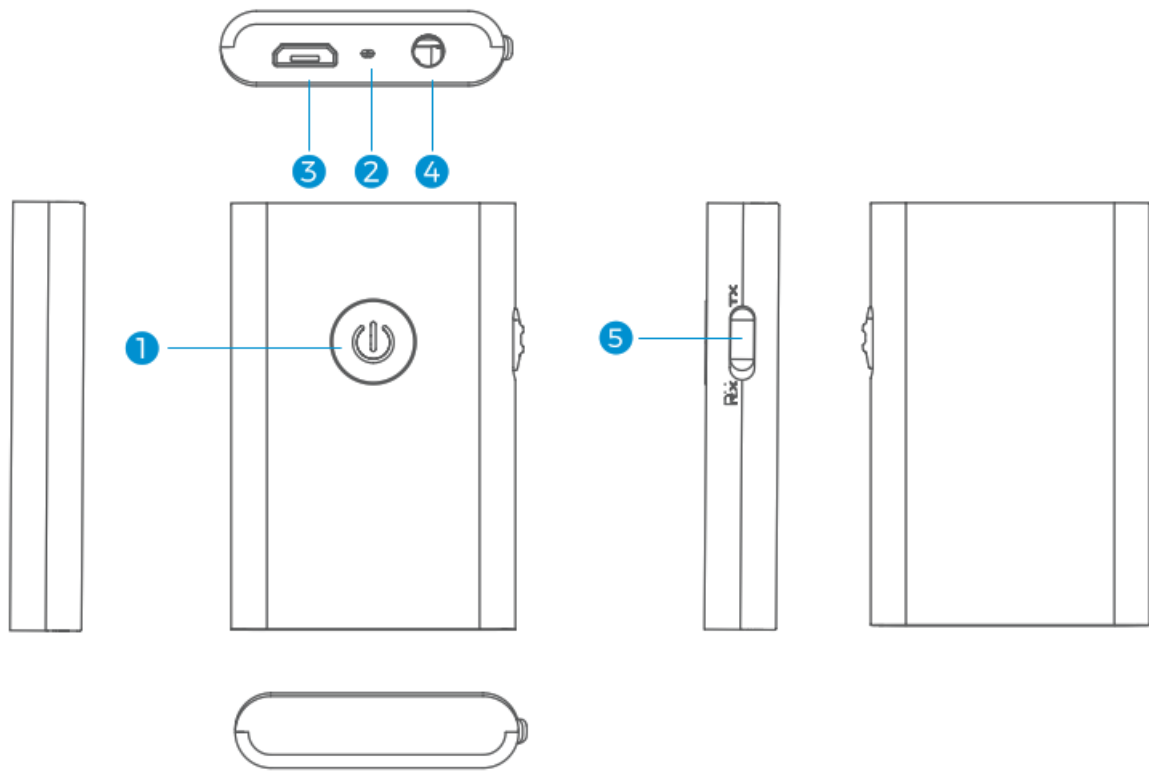
Contents

- 1 SPECIFICATIONS
- 2 POWER ON/POWER OFF
- 3 TX/RX MODE SWITCH
- 4 TRANSMIT MODE
- 5 RECEIVE MODE
- 6 CLEAR BLUETOOTH PAIRING
- 7 LOW BATTERY PROMPT
- 8 CHARGING
- 9 LITHIUM BATTERY CHARGING HIGH AND LOW-TEMPERATURE PROTECTION:
- 10 MATTERS NEEDING ATTENTION:
- 11 Documents / Resources
- 12 Related Posts

SPECIFICATIONS

Connection Technology	Bluetooth
Product Model	BT4810E
Bluetooth Range	10 m
Bluetooth Protocol	A2DP /AVRCP
Battery Capacity	Li-ion 250 mAH
Working Current	< 24 mA
Charging Voltage	DC 5.0 V
Frequency Range	2.402 GHz-2.480 GHz
Product size	52.5(L)*34.5(W)*8.7(H)mm

DIAGRAM



1. Multifunction button: Power ON/OFF: Pause/Play
2. Indicator Light
3. Micro USB Charging Port
4. Audio Input/Output Port
5. Bluetooth Receiver/Transmitter Switch

RECEIVE/TRANSMIT MODE SWITCH:

When the switch is turned to “RX”, the product is in the receiving mode; when the switch is turned to “TX”, the product is in the transmitting mode;

Note: When the product is turned on and in the working state, it can directly perform hot switching between the receiving and transmitting modes, and the product will automatically restart into the corresponding working mode after switching;

POWER ON/POWER OFF

Power On: Long press the C)-button for 3 seconds to power on BT4810. Then, the blue indicator light flashes quickly (TX Mode) or the red and blue indicator lights flash alternately quickly (RX Mode). Manual Power Off: Long press the button for 3 seconds until the red indicator light flashes once.

AUTOMATIC SHUT-DOWN:

1. After the product is turned on, it enters the state of pairing and reconnection, and no other operations are performed. If there is no connection after 10 minutes, the product will automatically shut down;
2. After the product exceeds the effective distance, it enters the pairing and reconnecting state, and if there is no connection after 20 minutes, the product will automatically shut down;
3. When the battery power is lower than 3.3V, the product will automatically shut down;

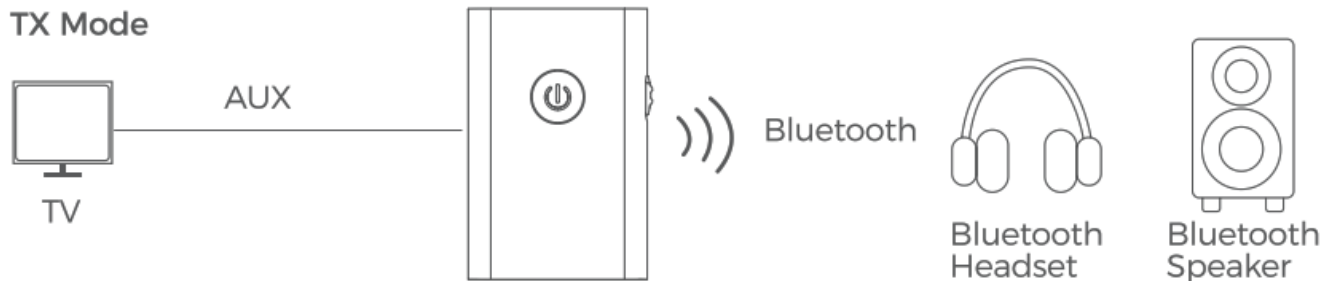
TX/RX MODE SWITCH

Convert via the TX/RX switch:

TX: Bluetooth Transmitter Mode
RX: Bluetooth Receiver Mode

TRANSMIT MODE

To enter Bluetooth transmit mode, turn the "TX / RX switch to TX position. Connect BT4810 to a non-Bluetooth multimedia audio device (such as TV and PC) with a 3.5mm audio cable. With BT4810, the music from a non-Bluetooth multimedia audio device, such as TV and PC, can be transmitted to a Bluetooth headphone or Bluetooth speaker etc. via Bluetooth Transmitter mode.



3.1 CONNECTION TO ONE BLUETOOTH HEADPHONE

1. For the first use, please pair BT4810 to a Bluetooth headphone or Bluetooth speaker after 3.5mm audio cable is connected.
2. Turn on BT4810, and it will enter pairing mode automatically with the blue indicator light flashing quickly.
3. Turn on your Bluetooth headphone or Bluetooth speaker etc. Ensure the distance is within 1 m. It may take 5-30 seconds to complete the pairing; The pairing time is 10 minutes. If the headset or receiver is not paired after 10 minutes, the BT4810 product will automatically shut down.
4. After the pairing is complete, the blue indicator light stays on.
5. Now, you can enjoy music on TV, PC etc. via Bluetooth headphones or Bluetooth speaker.

3.2 CONNECTION TO TWO BLUETOOTH HEADPHONES

1. After completing the connection to the first headphone, double press the button to enter pairing mode with the blue indicator light flashing quickly (The first device can still function normally).
2. Turn on the second Bluetooth headphone or Bluetooth speaker etc. Ensure the distance is within 1 meter. It may take 5-30 seconds to complete the pairing automatically.
3. After the pairing is complete, the blue indicator light stays on. The pairing time is 2 minutes. If the second receiver is not paired after 2 minutes, the product will automatically restore the state when it was connected to the first receiver, and the blue indicator light will be on;
4. Then, BT4810 is paired with two Bluetooth headphones or two Bluetooth speakers simultaneously.

3.3 DISCONNECT THE CURRENT CONNECTION

Disconnect manually: When BT4810 is paired to Bluetooth headphones, long press the '-' button for 2 seconds to disconnect BT4810 from the current devices and enter pairing mode with the blue indicator light flashing quickly.
Automatic disconnection: If only one receiver is currently connected to the BT4810 product, and the connected receiver is actively disconnected, the BT4810 product will automatically enter the pairing state, and the blue indicator light will flash quickly;

Note: If you want to pair to other devices, it's recommended to turn off the paired headphones.

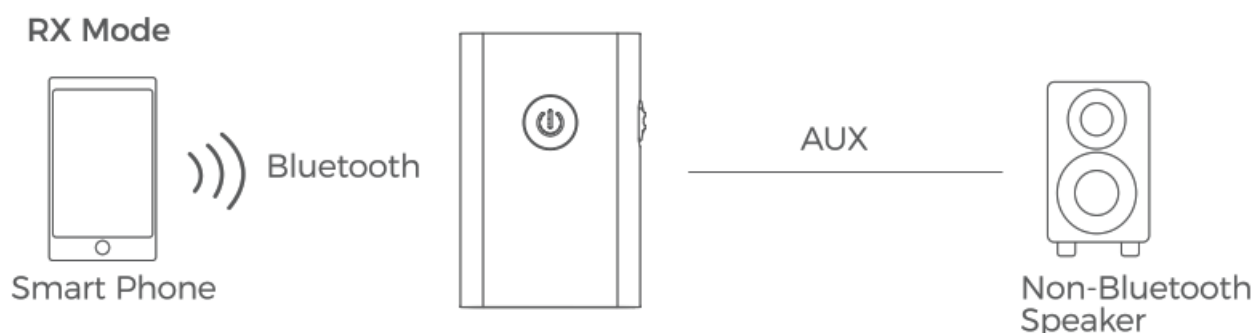
3.4 BLUETOOTH RECONNECTION

If the BT4810 product has been connected to the receiver, it will automatically enter the reconnecting state after power on. When reconnecting, the blue indicator flashes quickly, and the reconnection time is 15 seconds. If the receiver is not reconnected after 15 seconds, it will enter the pairing state. The indicator is still flashing quickly, the pairing time is 10 minutes, and the BT4810 product will automatically shut down if the receiver is not paired after 10 minutes; if the BT4810 product has only been paired with one receiver, the blue indicator light will be on after the connection is successful;

If two or more receivers have been paired, after the first receiver is successfully reconnected, it will continue to reconnect to the second receiver, the blue indicator continues to flash rapidly, the reconnection time is 15 seconds, the blue indicator light will be on for a long time after the connection is successful, if the second receiver is not successfully connected, it will automatically restore the state when the first receiver was connected, and the blue indicator will be on for a long time;

RECEIVE MODE

To enter Bluetooth receiver mode. turn the 'TX / RX' switch to 'RX' position. Then connect BT4810 to a non-Bluetooth headphone, non-Bluetooth speaker or car stereo via a 3.5 mm audio cable. Pair a smartphone etc. to BT4810 via Bluetooth to stream music to a headphone, speaker or car stereo.



4.1 CONNECTION TO ONE SMARTPHONE

1. For the first use, pair BT4810 to a smartphone or other smart devices after 3.5mm audio cable connected.
2. Turn on BT4810 it will enter pairing mode with the red and blue indicator lights flashing alternately quickly.
3. Enable Bluetooth on your smartphone. Search "BT4810" and click to connect.
4. If needed, enter the code '0000'. 5. After the pairing is complete, the blue indicator light flashes slowly.

4.2 CONNECTION TO TWO SMARTPHONES

1. After completing the connection to the first smartphone, double press the button to enter pairing mode with the red and blue indicator lights flashing alternately quickly (the first smartphone can still work normally).
2. Enable Bluetooth on the second smartphone, search "BT4810" and click to connect.
3. After the connection to the second smartphone is complete, two smartphones will be paired to BT4810 simultaneously.

4.3 DISCONNECT THE CURRENT CONNECTION

Disconnect manually: Disconnect the current paired smartphones and connect with a new one: Long press the 0 button on BT4810 for 2 seconds to enter pairing mode again with red and blue indicator lights flashing alternately quickly.

Automatic disconnection: If only one mobile phone is currently connected to the BT4810 product, and the connected mobile phone is actively disconnected, the BT4810 product will automatically enter the pairing state, and the red indicator light and the blue indicator light flash alternately;

4.4 BLUETOOTH RECONNECTION

If the 814810 product has been connected to a mobile phone, it will automatically enter the reconnecting state after powering on. When reconnecting, the red and the blue indicator light flash alternately. The reconnection time

is 15 seconds. If the mobile phone is not reconnected after 15 seconds, it will enter the pairing state. The red and the blue indicator are still flashing alternately, the pairing time is 10 minutes, and the BT4810 product will automatically shut down if it is not paired with a mobile phone after 10 minutes; if the BT4810 product has only been paired with one mobile phone, the blue indicator light flashes once every 5 seconds after the connection is successful;

If two or more mobile phones have been paired, after the first mobile phone is successfully reconnected, it will continue to reconnect to the second mobile phone. The red and the blue indicator light continue to flash alternately. The reconnection time is 15 seconds. After successful, the blue indicator flashes once every 5 seconds.

If the second mobile phone is not successfully connected after 15 seconds, it will automatically restore the state when connecting to the first mobile phone, and the blue indicator flashes once every 5 seconds;

4.5 PLAY MUSIC

Play/Pause:Short press -*button.

CLEAR BLUETOOTH PAIRING

In the power-off state, long press the button for 8 seconds until the red and blue indicator lights flash once simultaneously. After the pairing list is cleared, BT4810 will be on and enter pairing mode.

Note 1: When the product clears the pairing list, if it is in the receiving mode, it will clear the pairing record in the receiving mode, and if it is in the transmitting mode, it will clear the pairing record in the transmitting mode;

Note 2: If it's difficult to pair with new devices, you can clear the pairing list on BT4810 and the connected Bluetooth devices and start to pair again.

LOW BATTERY PROMPT

When the battery voltage is lower than 3.4V, the product enters a low voltage alarm, the red indicator light flashes 3 times every 2 minutes, and when the battery voltage is lower than 3.3V, the product will automatically shut down;

CHARGING

When BT4810 is in low power or can't be turned on. Please charge it via a DC 5 V USB charging cable. The red indicator light stays on during the charging process and goes off automatically when the charging is complete. The charging current is about 200mA, and the full charging time is about 2 hours;

LITHIUM BATTERY CHARGING HIGH AND LOW-TEMPERATURE PROTECTION:

The product has a built-in NTC temperature detection resistor to detect the temperature of the lithium battery charging to prevent the battery from being damaged due to high or low temperature during charging.

In the high-temperature state, when the temperature exceeds 45 degrees, the charging will be stopped, and the charging will be resumed when the temperature drops to about 35 degrees;

In the low-temperature state, when the temperature is lower than 0 degrees, the charging will be stopped, and the charging will be resumed when the temperature rises to about 10 degrees;

MATTERS NEEDING ATTENTION:

1. The working voltage of the product is in the range of 3.0-4.2V. When the power is low or not used for a long time, the product should be charged in time to prevent the product from working abnormally or from battery damage;
2. The wireless signal of Bluetooth will be blocked and absorbed by surrounding objects. Try to place it in a barrier-free position with the Bluetooth-connected device during use, so that you can enjoy better sound;
3. The product has a built-in lithium battery, please pay attention to charging the product in a time when using it;


4. Please keep the product away from water or other liquids to avoid damage to the product;

NOTE: This equipment has been tested and found to comply with the limits for a Class B digital device, pursuant to part 15 of the FCC Rules. These limits are designed to provide reasonable protection against harmful interference in a residential installation. This equipment generates uses and can radiate radio frequency energy and, if not installed and used in accordance with the instructions, may cause harmful interference to radio communications. However, there is no guarantee that interference will not occur in a particular installation. If this equipment does cause harmful interference to radio or television reception, which can be determined by turning the equipment off and on, the user is encouraged to try to correct the interference by one or more of the following measures:

- Reorient or relocate the receiving antenna.
- Increase the separation between the equipment and receiver.
- Connect the equipment into an outlet on a circuit different from that to which the receiver is connected.
- Consult the dealer or an experienced radio/TV technician for help.

Changes or modifications not expressly approved by the party responsible for compliance could void the user's authority to operate the equipment.

Documents / Resources

	Shenzhen I Link Technology BT4810E Wireless Receiver Transmitter [pdf] User Manual BT4810E, RCT-BT4810E, RCTBT4810E, Wireless Receiver Transmitter, BT4810E Wireless Receiver Transmitter
--	--