



SHENZHEN Hitevision Technology IEEE 802.11 a Wireless WiFi Module Instruction Manual

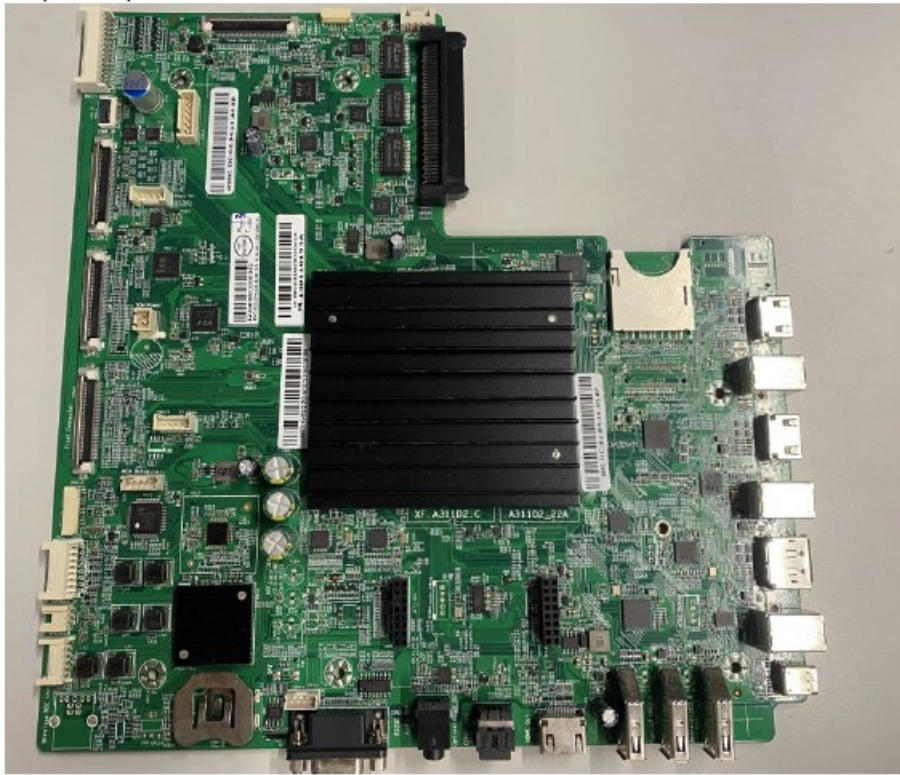
[Home](#) » [Shenzhen Hitevision Technology](#) » SHENZHEN Hitevision Technology IEEE 802.11 a Wireless WiFi Module Instruction Manual 

Contents

- [1 SHENZHEN Hitevision Technology IEEE 802.11 a Wireless WiFi Module](#)
- [2 Product Information](#)
- [3 Product Description](#)
- [4 Product Features](#)
- [5 Product Specification](#)
- [6 Installation Procedure](#)
- [7 FCC Statement](#)
- [8 Documents / Resources](#)
 - [8.1 References](#)
- [9 Related Posts](#)

SHENZHEN

SHENZHEN Hitevision Technology IEEE 802.11 a Wireless WiFi Module



Product Information

The AZ832-G is a complete 2.4GHz/5GHz WIFI module manufactured by SHENZHEN Hitevision Technology Co., Ltd. It is a network card that integrates RTL8811CU and RTL8852BU chips. The RTL8852BU provides IEEE 802.11 a/b/g/n/ac/ax and Bluetooth WLAN operation, supporting 20MHz, 40MHz, and 80MHz channels for data rates up to 1201Mbps. This module complies with IEEE 802.11 a/b/g/n/ac/ax standards and delivers reliable and cost-effective wireless connectivity at high standards. It can be connected to the entire machine through a TV interface to achieve wireless functionality.

Product Features

- Complies with IEEE 802.11b/g/n/ax for 2.4GHz and IEEE 802.11a/n/ac/ax for 5GHz.
- Bluetooth v5.2
- Works with all existing network infrastructure.
- Capable of up to 128-Bit WEP Encryption.
- Freedom to roam while staying connected.
- Up to 1201 Mbps High-Speed Transfer Rate in 802.11ax mode of operation.
- Operating Systems: Linux, Win10, Win11.
- Low power consumption.
- Easy to install and configure.
- High-speed USB 2.0 interface.
- ROHS compliant.

Product Specification

- Model: AZ832-G
- Product Name: Wireless module
- Standard: 802.11 a/b/g/n/ac/ax
- Interface: USB
- Data Transfer Rate: 1, 2, 5.5, 6, 11, 12, 18, 22, 24, 30, 36, 48, 54, 60, 90, 120 and maximum of 1201Mbps

- Modulation Method:
 - GFSK,/4-DQPSK,8DPSK (Bluetooth)
 - DQPSK,DBPSK,CCK (802.11b)
 - QPSK,BPSK,16QAM,64QAM with OFDM (802.11g)
 - QPSK,BPSK,16QAM,64QAM with OFDM (802.11n)
 - QPSK,BPSK,16QAM,64QAM,256QAM with OFDM (802.11a)
 - QPSK,BPSK,16QAM,64QAM,256QAM,1024QAM with OFDM (802.11ac)
 - BLUETOOTH 2402~2480 MHz
- Operation Mode: Security
- Operating Voltage: Current Consumption
- Antenna Type: Operating Temperature Storage Temperature
- Humidity: 5 to 95% maximum (non-condensing)

Installation Procedure

1. Step 1: Prepare a motherboard.
2. Step 2: Insert the module into the TV motherboard.
3. Step 3: Complete the connection.

Note: This wireless module only works for TV.

FCC Statement This equipment complies with Part 15 of the FCC Rules. Operation is subject to the following two conditions: (1) This device may not cause harmful interference, and (2) This device must accept any interference received, including interference that may cause undesired operation. Any changes or modifications not expressly approved by the party responsible for compliance could void the user's authority to operate the equipment.

Wireless module

IEEE 802.11 a/b/g/n/ac/ax 2T/2R

Model Number: AZ832-G

Product Description

The AZ832-G is a complete 2.4GHz/5GHz WIFI module. This module is a network card that integrates RTL8811CU and RTL8852BU chips. the RTL8852BU provides IEEE 802.11 a/b/g/n/ac/ax and Bluetooth 5.2, supports 2x2 MIMO mode, the RTL8811CU provides IEEE 802.11 a/b/g/n/ac and supports 1x1 mode. The WLAN operation supports 20MHz, 40MHz and 80MHz channels for data rates up to 1201Mbps. It fully complies with IEEE 802.11 a/b/g/n/ac/ax feature rich wireless connectivity at high standards, delivers reliable, cost-effective, throughput from an extended distance. This device is a plug-and-play module unit that is connected to the entire machine through a TV interface achieve wireless functionality

Product Features

- Complies with IEEE 802.11b/g/n/ax for 2.4GHz and IEEE 802.11a/n/ac/ax for 5GHz.
- Bluetooth v5.2
- Works with all existing network infrastructure.
- Capable of up to 128-bit WEP Encryption.
- Freedom to roam while staying connected.
- UP to 1201 Mbps High-Speed Transfer Rate in 802.11ax mode of operation.
- Operating Systems Linux, Win10, Win11.
- Low power consumption.

- Easy to install and configure.
- High-speed usb 2.0 interface.
- ROHS compliant

Product Specification

Model	AZ832-G
Product Name	Wireless module
Standard	802.11 a/b/g/n/ac/ax
Interface	USB
Data Transfer Rate	1,2,5.5,6,11,12,18,22,24,30,36,48,54,60,90,120 and maximum of 1201Mbps
Modulation Method	GFSK,π/4-DQPSK,8DPSK(blueetooth) DQPSK,DBPSK,CCK(802.11b) QPSK,BPSK,16QAM,64QAM with OFDM (802.11g) QPSK,BPSK,16QAM,64QAM with OFDM (802.11n) QPSK,BPSK,16QAM,64QAM with OFDM (802.11a) QPSK,BPSK,16QAM,64QAM,256QAM with OFDM (802.11ac) QPSK,BPSK,16QAM,64QAM,256QAM,1024QAM with OFDM (802.11ax)
Frequency Band	BLUETOOTH 2402~2480 MHz WIFI 2.4G: 2412~2462 MHz 5G: 5150~5350MHz, 5470~5725MHz 5725~5850MHz
Operation Mode	Infrastructure
Security	WEP, TKIP, AES, WPA, WPA2
Operating Voltage	12V±10%
Current Consumption	1000mA
Antenna Type	External
Operating Temperature	0 ~ 45°C ambient temperature
Storage Temperature	-40 ~ 80°C ambient temperature
Humidity	5 to 95 % maximum (non-condensing)

NOTICE

- please keep this product and accessories attached to the places which children can't touch;
- do not splash water or other liquid onto this product, otherwise it may cause damage;
- do not put this product near the heat source or direct sunlight, otherwise it may cause deformation or malfunction;
- please keep this product away from flammable or naked flame;

- please do not repair this product by yourself. Only qualified personnel can be repaired.

Installation Procedure

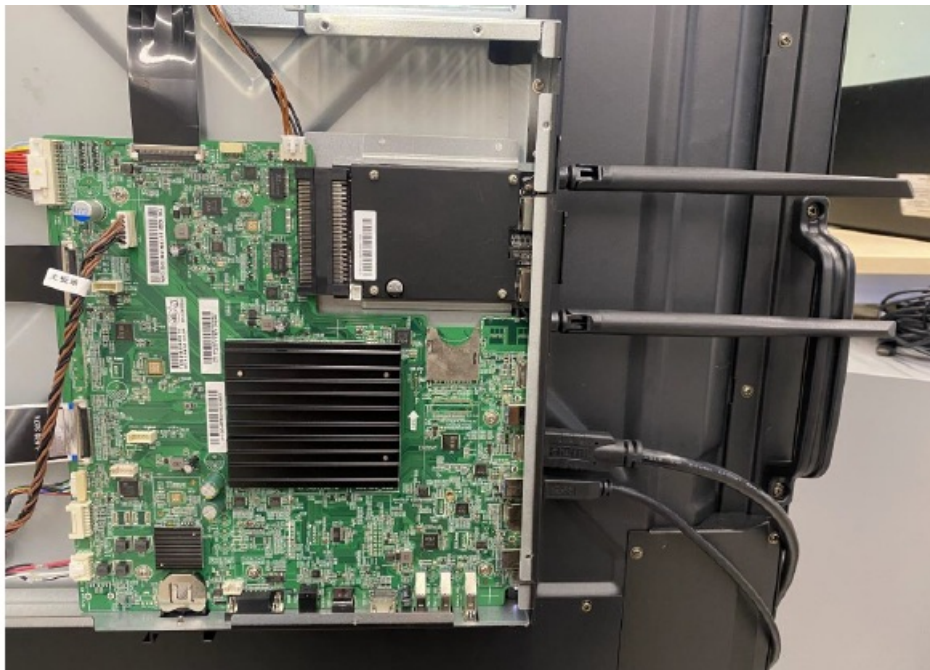
- Step 1: Prepare a motherboard



- Step 2: insert the module into the TV motherboard



- Step 3: Complete the connection



Note: this wireless module only works for TV

FCC Statement

This equipment has been tested and found to comply with the limits for a Class B digital device, pursuant to part 15 of the FCC rules. These limits are designed to provide reasonable protection against harmful interference in a residential installation. This equipment generates, uses and can radiate radio frequency energy and, if not installed and used in accordance with the instructions, may cause harmful interference to radio communications. However, there is no guarantee that interference will not occur in a particular installation. If this equipment does cause harmful interference to radio or television reception, which can be determined by turning the equipment off and on, the user is encouraged to try to correct the interference by one or more of the following measures:

- Reorient or relocate the receiving antenna.
- Increase the separation between the equipment and receiver.
- Connect the equipment into an outlet on a circuit different from that to which the receiver is connected.
- Consult the dealer or an experienced radio/TV technician for help.

This equipment complies with Part 15 of the FCC Rules. Operation is subject to the following two conditions:

1. This device may not cause harmful interference, and
2. This device must accept any interference received, including interference that may cause undesired operation.

Any changes or modifications not expressly approved by the party responsible for compliance could void the user's authority to operate the equipment.

This equipment complies with FCC radiation exposure limits set forth for an uncontrolled environment. This equipment should be installed and operated with a minimum distance of 20cm between the radiator & your body. This transmitter must not be co-located or operating in conjunction with any other antenna or transmitter.

FCC Supplier's Declaration of Conformity


- Unique Identifier(Model Name): AZ832-G
- Responsible Party -U.S Contact Information

- Company name: Newline Interactive Inc.
- Company Address: 101 East Park Blvd. Suite 807 Plano TX 75074 USA
- Contact information: plo@newline-interactive.com

FCC Compliance Statement

This device complies with Part 15 of the FCC Rules. Operation is subject to the following two conditions: (1) this device may not cause harmful interference, and (2) this device must accept any interference received, including interference that may cause undesired operation

Documents / Resources

	SHENZHEN Hitevision Technology IEEE 802.11 a Wireless WiFi Module [pdf] Instruction M anual AZ832-G, IEEE 802.11 a Wireless WiFi Module, Wireless WiFi Module, WiFi Module, Module
------------------------------------------------------------------------------------	-------------------------------------------------------------------------------------------------------------------------------------------------------------------------------------------------------

References

- [✔ Interactive - The Power of Communication - Interactive - The Power of Communication](#)
- [User Manual](#)