



# Shenzhen Hailu Technology YS37-1 Wireless Controller User Guide

[Home](#) » [Shenzhen Hailu Technology](#) » Shenzhen Hailu Technology YS37-1 Wireless Controller User Guide 



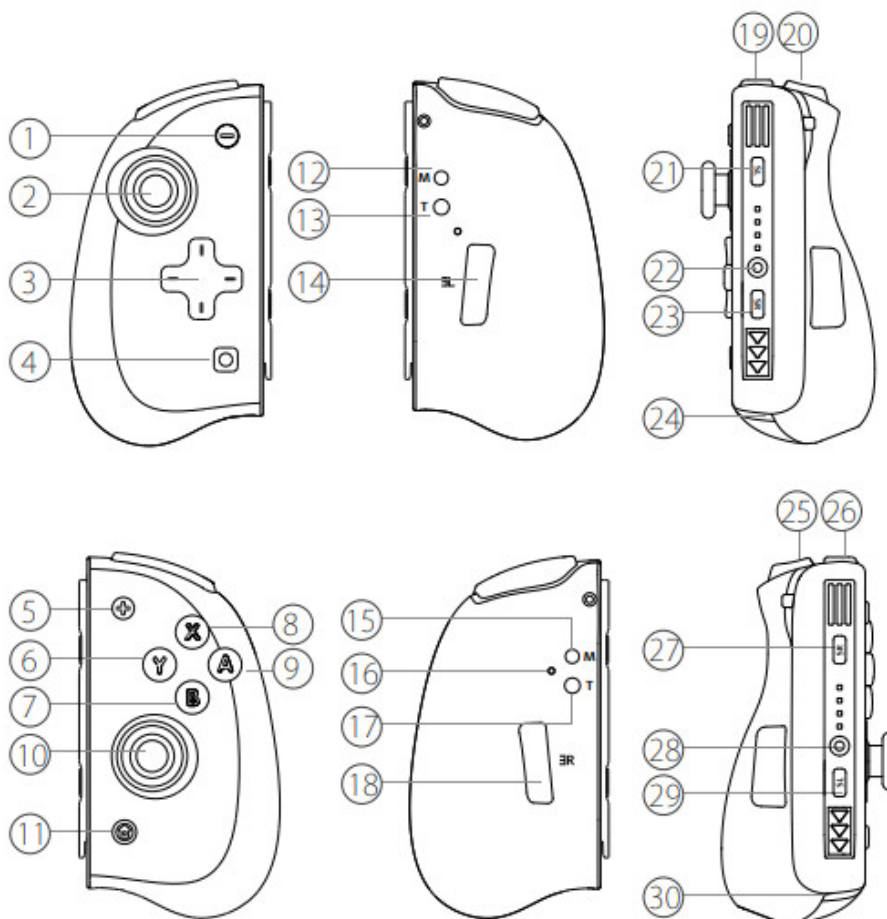
**Hailu Technology YS37-1 Wireless Controller  
User Guide**

**Welcome Guide Wireless controller**

## Contents

- 1 Button Layout
- 2 Specifications
- 3 Connection
- 4 Turbo Function
  - 4.1 Turbo Mode
  - 4.2 Turn Off
  - 4.3 Turbo Speed Adjustment
  - 4.4 Buttons can be set
- 5 Button Assaign Function
  - 5.1 Assign Setting
  - 5.2 Turn Off
  - 5.3 Buttons can be set
- 6 Vibration Level Adjustment
- 7 LED Ring Setting
  - 7.1 A: Normal Mode
  - 7.2 B: Breathing Light Mode
- 8 Gyro Calibration
- 9 Reset Button Function
- 10 Driver Package
- 11 Low Voltage Alarm
- 12 Charging Instructions
- 13 Warning
- 14 Documents / Resources
  - 14.1 References
- 15 Related Posts

## Button Layout



1. – button	16. Reset button
2. Left stick	17. Turbo button
3. Directional pad	18.3R button
4. Screenshot button	19. L button
5. +button	20. ZL button
6. Y button	21. SL button
7. B button	22. Pairing button
8. X button	23. SR button
9. A button	24. Type-C interface
10. Right stick	25. ZR button
11. Home button	26. R button
12. M button	27. SR button
13. Turbo button	28. Pairing button
14. 3L button	29. SL button
15. M button	30. Type-C interface

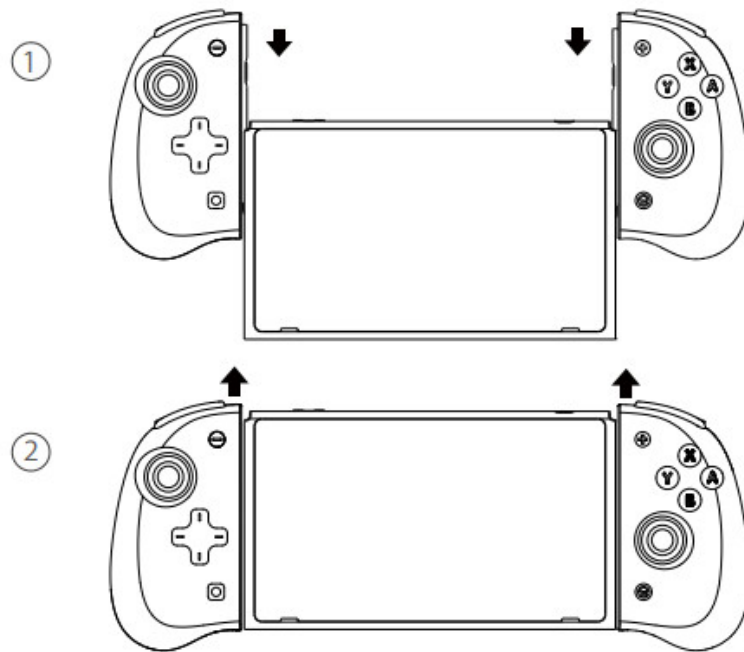
## Specifications

1. Transmission Media: Bluetooth 2.1
2. Carrier Wave: 2.402-2.480GHz
3. Protocol: Bluetooth 2.1
4. LED: 8 LED Lights & 8 Multi-Color LED lights
5. Battery: One Lithium polymer battery 3.7V 500/mAH
6. Battery life: 3-4 hours after fully charged
7. operating voltage: 3.7V-4.2V
8. charging voltage: 5V
9. Operating temperature: -10°C~50°C
10. storage temperature: -20°C~70°C
11. Dimensions (approx): 7\*20\*41mm
12. weight(approx): 149g

## Connection

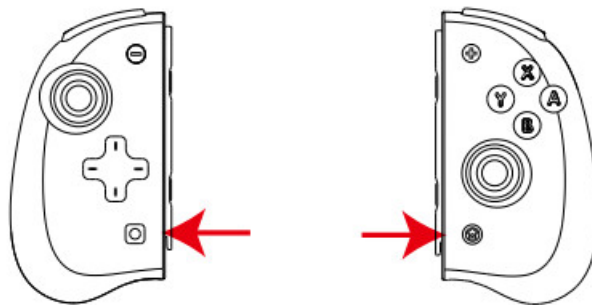
### A.Conventional Connection

1. Attaching the controllers to the console will connect them automatically.
2. The Joy-Con controllers will remain paired when you detach them from the console, and you'll be able to use them wirelessly.



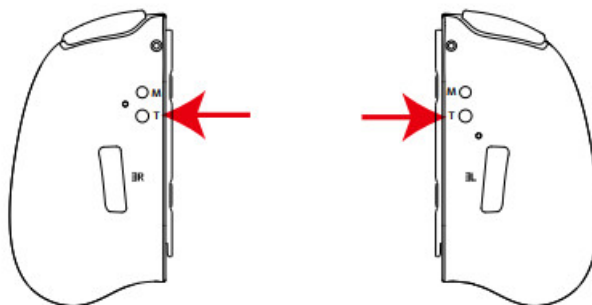
## B: Bluetooth Reconnecting

Press the Home button or the Capture button to reconnect your controllers back to the console, 4 LED indicators on the side will start to flash in a regular pattern as an indication of reconnecting.



## Turbo Function

**Note:** The T button on the left controller can only assign the buttons that are on the left controller. The same goes for the T button on the right controller.



## Turbo Mode

A: Hold down the T button and then press the button that you want to set for the 1st time to turn on the normal turbo function. (Controller will vibrate.)

B: Hold down the T button and then press the button that you want to set for the 2nd time to turn on the automatic

turbo function. (Controller will vibrate.)

### Turn Off

Hold down the T button and then press the button that you have set for the 3rd time to turn off its turbo function. (Controller will vibrate.)

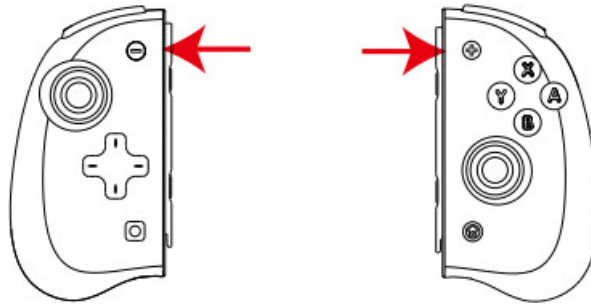
\* Hold the T button for 5 seconds to cancel the Turbo function of all buttons.

### Turbo Speed Adjustment

\* A total of 3 turbo speeds can be adjusted cyclically.

Hold down the T button and press the – button for Controller(L). (Controller will vibrate.)

Hold down the T button and press the + button for Controller(R). (Controller will vibrate.)



### Buttons can be set

Left controller L / ZL / 3L button and Control Pad (Up / Down/Left/ Right).

Right controller R / ZR / 3R button and A / B / X / Y button.

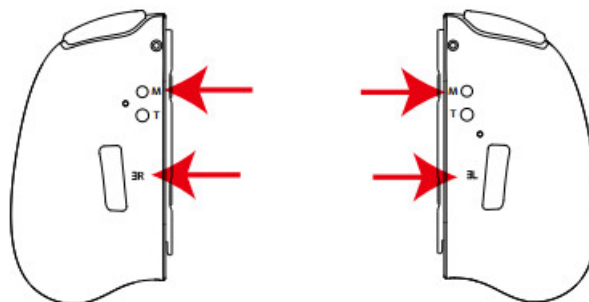
### Button Assign Function

**Note:** The M button on the left controller can only assign the buttons that are on the left controller. The same goes for the M button on the right controller.

### Assign Setting

Hold down the M button and press the button you want to assign to the 3L button for Controller(L). (Controller will vibrate.) Hold down the M button and press the button you want to assign to the 3R button for Controller(R). (Controller will vibrate.)

\*The above steps can directly change the button to be set



### Turn Off

Hold the M button for 5 seconds to cancel the assign function of the controller. (Controller will vibrate.)

## Buttons can be set

Left controller L / ZL / Left stick button and Control Pad (Up / Down/ Left/ Right).

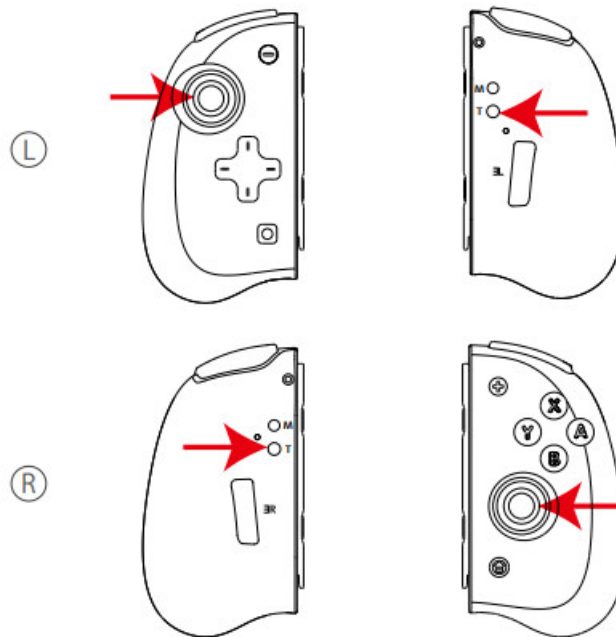
Right controller R / ZR / Right stick button and A / B / X / Y button.

## Vibration Level Adjustment

Press the T button and push the Joystick up or down to adjust the vibration level of each controller.

(Controller will vibrate when adjusting between each vibration level.)

\* There are 5 levels of Vibration 100% 75% 50% 30% and 0%. (Default level is 50%)



## LED Ring Setting

### A: Normal Mode

Hold the T button and press the joystick once to turn the light into normal mode the light will keep on this color and repeat this procedure to change color. Controller will vibrate when set successfully)

1-8 colors: 1. Red 2. Orange 3. Yellow 4. Green 5. Cyan 6.Blue 7.Purple 8.Rainbow

### Brightness Adjustment

Press & hold the T button and joystick to change the brightness, then release the joystick to fix the brightness.

Controller will vibrate when set successfully)

### B: Breathing Light Mode

Hold the T button and press the joystick twice to turn the light into breathing light mode, the following three modes will be cycled. Controller will vibrate when set successfully)

Mode 1: 1-7 color auto cycling.

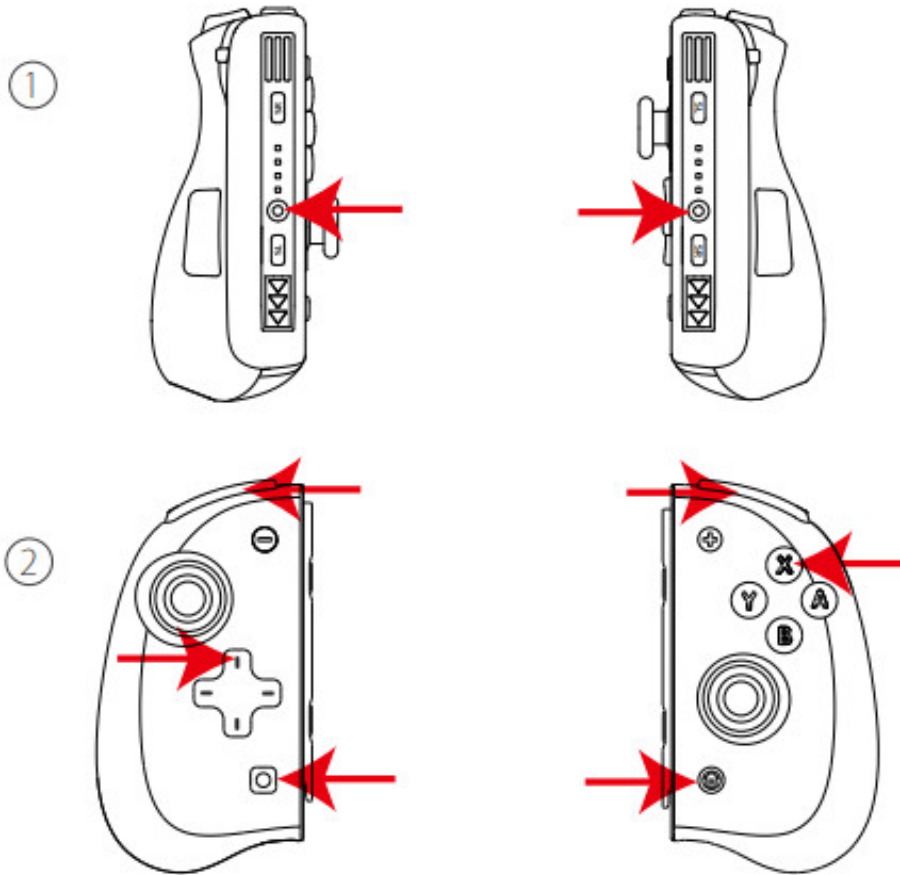
Mode 2 Rainbow light.

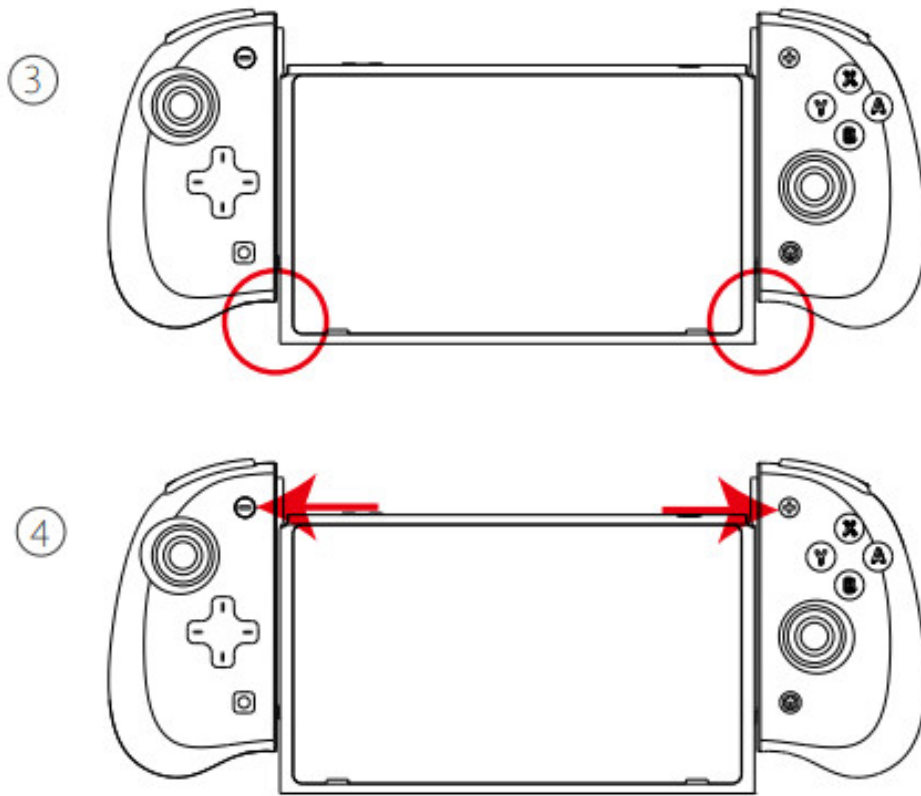
Mode 3: Light off.

## Gyro Calibration

1. First, press and hold the Pairing Button to turn off the controller.

2. For controller(L), press the L, UP, and the Capture button together to enter the calibration mode.  
For controller(R), press the R, X, and the Home button together to enter the calibration mode.
3. When entering the calibration mode, LED lights will flash alternately. Then align the controllers with the rails on either side of the console, and slide them down BUT DO NOT slide them to the bottom of the rail. (If you hear a click you need to press the release button and slide them up a little.)
4. Then press the – button for the controller(L) and the + button for the control(R) to start the calibrating.  
Controllers will be reconnected back to the console when calibration is over.





### Reset Button Function

When there are some unsolvable faults in the controller, you can try to press and hold the reset button on the back of the controller for more than 5 seconds. At this time, the controller is powered off and reset, and you need to reconnect according to the method of connecting the controller for the first time.

### Driver Package

We support downloading the driver package through a USB connection to the computer to fix some problems that may be encountered in use. If the driver package does not work, please contact us by email ([support@binbok.com](mailto:support@binbok.com)).

Driver package download website: [www.bimbok.com](http://www.bimbok.com)

**Note** No need to download the driver if it can be used normally, otherwise, new problems may occur due to version conflicts)

### Low Voltage Alarm

1. If the lithium battery voltage is lower than  $3.45V \pm 0.1V$ , the current channel light flashes quickly and indicate low voltage.
2. If the lithium battery voltage is lower than  $3.35V \pm 0.1V$ , it will automatically sleep.

### Charging Instructions

1. When the controllers are in the USB charging state, LED lights will flash slowly, if connected to the console, the lights will stay on when it is fully charged; If not, the light will be off.
2. When the pairing indication conflicts with the charging low power indicator, the pairing indicates a concern.

### Warning



1. Do not expose the controller to high temperature, high humidity, or direct sunshine.
2. Do not allow liquid or small particles to enter the controller.
3. Do not put any heavy objects on the controller.
4. Do not disassemble the controller.
5. Do not twist or pull the cable too strongly.
6. Do not throw, drop, or apply strong shock to the controller.



Binbrook Game



@BINBOKOfficial



Official Homepage: [binbok.com](http://binbok.com)

Register on this web to activate aftersales.

Business Contact: [contact@binbok.com](mailto:contact@binbok.com)



US: [support@binbok.com](mailto:support@binbok.com)

EUR: [support.eur@binbok.com](mailto:support.eur@binbok.com)

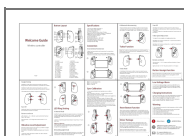
This device complies with part 15 of the FCC Rules. Operation is subject to the following two conditions: (1) this device may not cause harmful interference, and (2) this device must accept any interference received, including interference that may cause undesired operation. Any changes or modifications not expressly approved by the party responsible for compliance could void the user's authority to operate the equipment.

NOTE: This equipment has been tested and found to comply with the limits for a Class B digital device, pursuant to Part 15 of the FCC Rules. These limits are designed to provide reasonable protection against harmful interference in a residential installation. This equipment generates, uses, and can radiate radio frequency energy and, if not installed and used in accordance with the instructions, may cause harmful interference to radio communications. However, there is no guarantee that interference will not occur in a particular installation. If this equipment does cause harmful interference to radio or television reception, which can be determined by turning the equipment off and on, the user is encouraged to try to correct the interference by one or more of the following measures:

- Reorient or relocate the receiving antenna.
- Increase the separation between the equipment and receiver.
- Connect the equipment into an outlet on a circuit different from that to which the receiver is connected.
- Consult the dealer or an experienced radio/TV technician for help.

The device has been evaluated to meet general RF exposure requirements. The device can be used in portable exposure conditions without restriction

## Documents / Resources



[Shenzhen Hailu Technology YS37-1 Wireless Controller](#) [pdf] User Guide

YS37-1, YS371, 2A5W6YS37-1, 2A5W6YS371, YS37-1 Wireless Controller, YS37-1, Wireless Controller

## References

- [Home - BINBOK RGB Joy Con Switch Controller](#)

-  [Home - Binbok RGB Joy Con Switch Controller](#)

Manuals+.