



Shenzhen Haihongchang Electronics HHC-W116 Pro Controller for WU User Manual

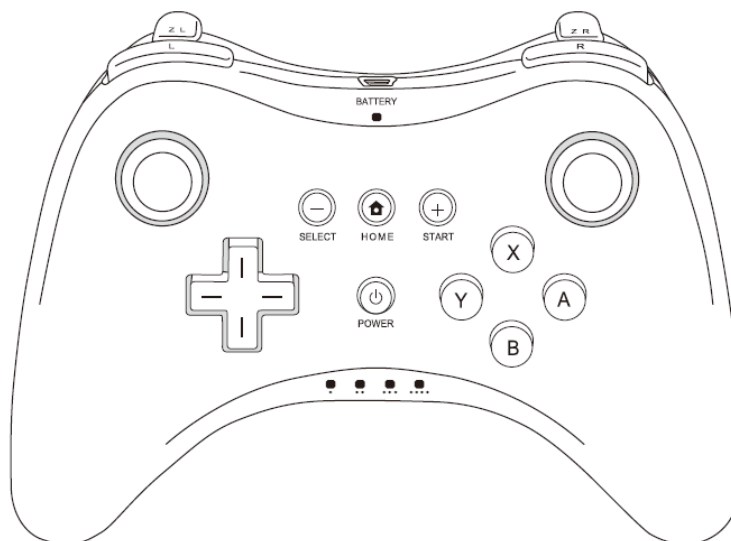
[Home](#) » [Shenzhen Haihongchang Electronics](#) » Shenzhen Haihongchang Electronics HHC-W116 Pro Controller for WU User Manual 

Contents

- [1 Shenzhen Haihongchang Electronics HHC-W116 Pro Controller for WU](#)
- [2 How to Complete the first connection](#)
- [3 TROUBLE SHOOTING for first connection](#)
- [4 FCC Warning](#)
- [5 Documents / Resources](#)
- [6 Related Posts](#)



Shenzhen Haihongchang Electronics HHC-W116 Pro Controller for WU



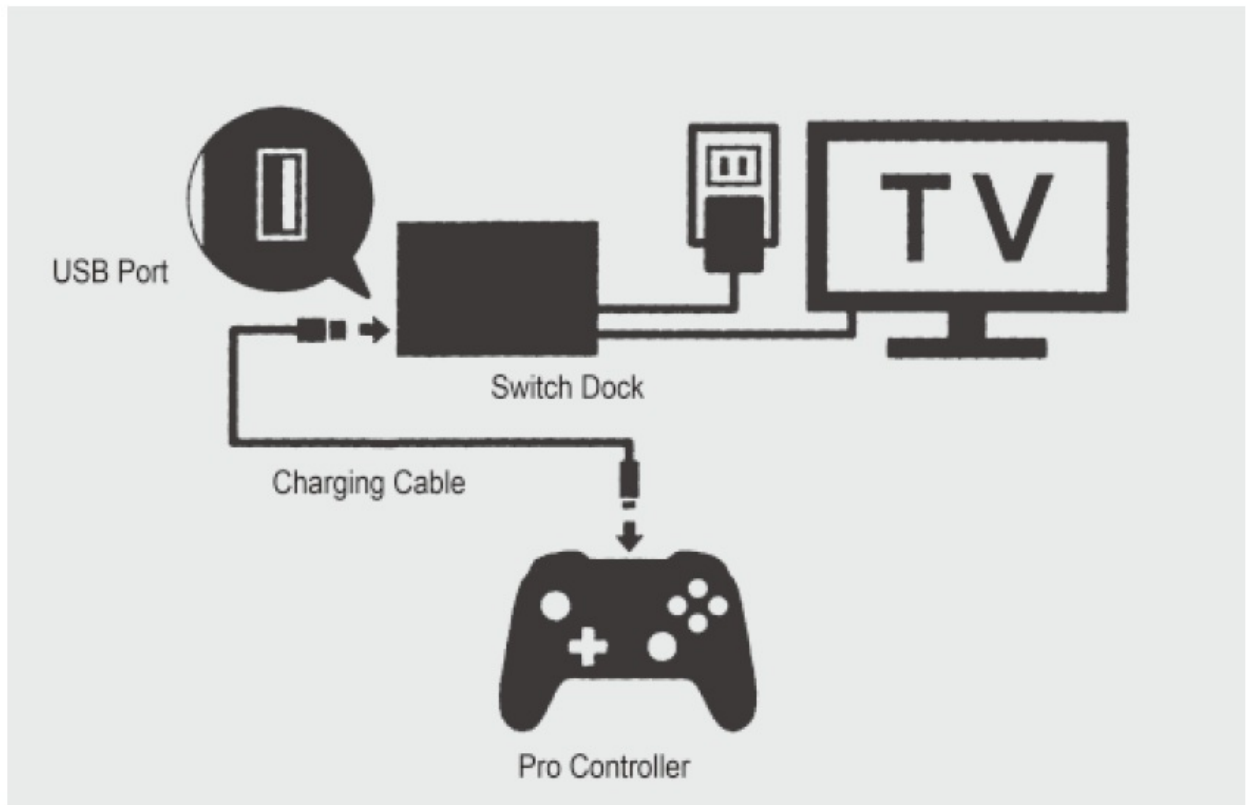
Please carefully read the wu Operations Manual completely before using this accessory. This manual contains complete instructions for using the accessory, and important health and safety information. This controller only

works with w U software that supports W u Pro Controller gameplay (see game packaging for compatibility information). This controller can be used with the WU Menu and for system operations. The WU Pro Controller must be paired with your w u console before use.

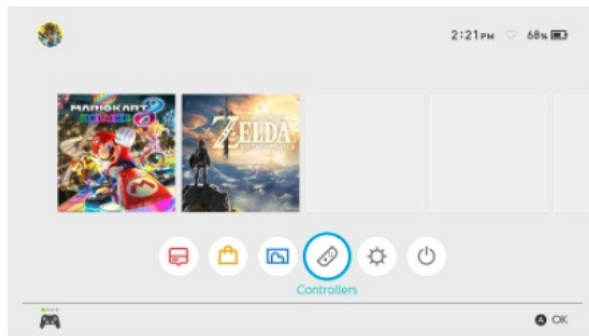
How to Complete the first connection

At the first time of connecting this controller to Switch,you have two Options.

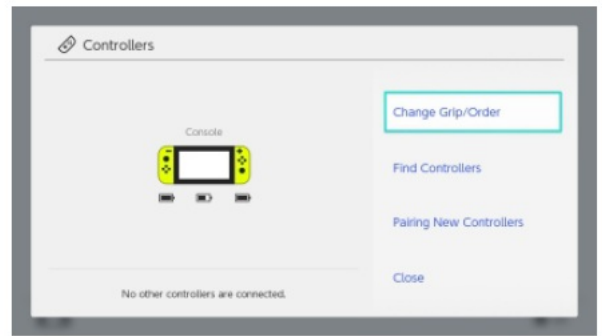
- Option 1 : Via Type-C cable
 1. Connect this controller to the dock by a type-c cable,wait till one channel light keep on
 2. Plug out the type-c cable ,controller channel light will flash (waiting to pair),wait till one channel light keep on,then connection succeed.



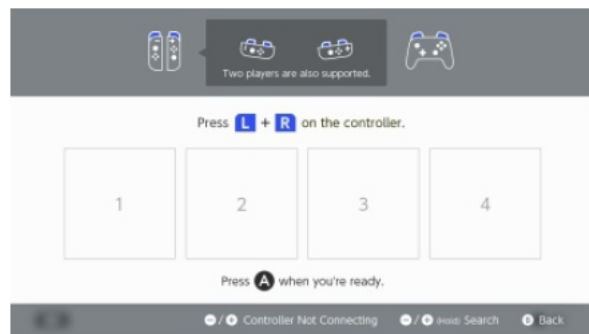
- Option 2: Wireless connection
 1. Please operate your console as following: System Settings —>Controllers and Sensors—>Change Grip/Order.
 2. Long press controller Home button for 5 seconds channel light will flash(waiting to pair).wait till one channel light keep on, then connection succeed.



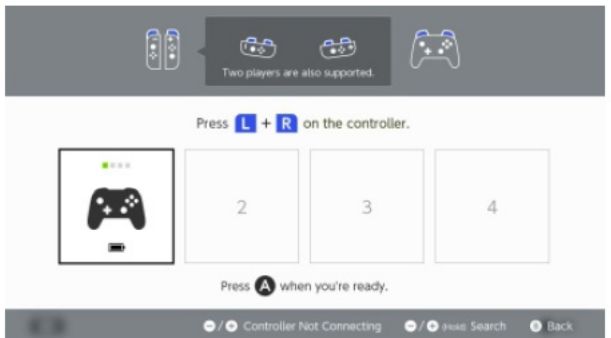
(1)



(2)



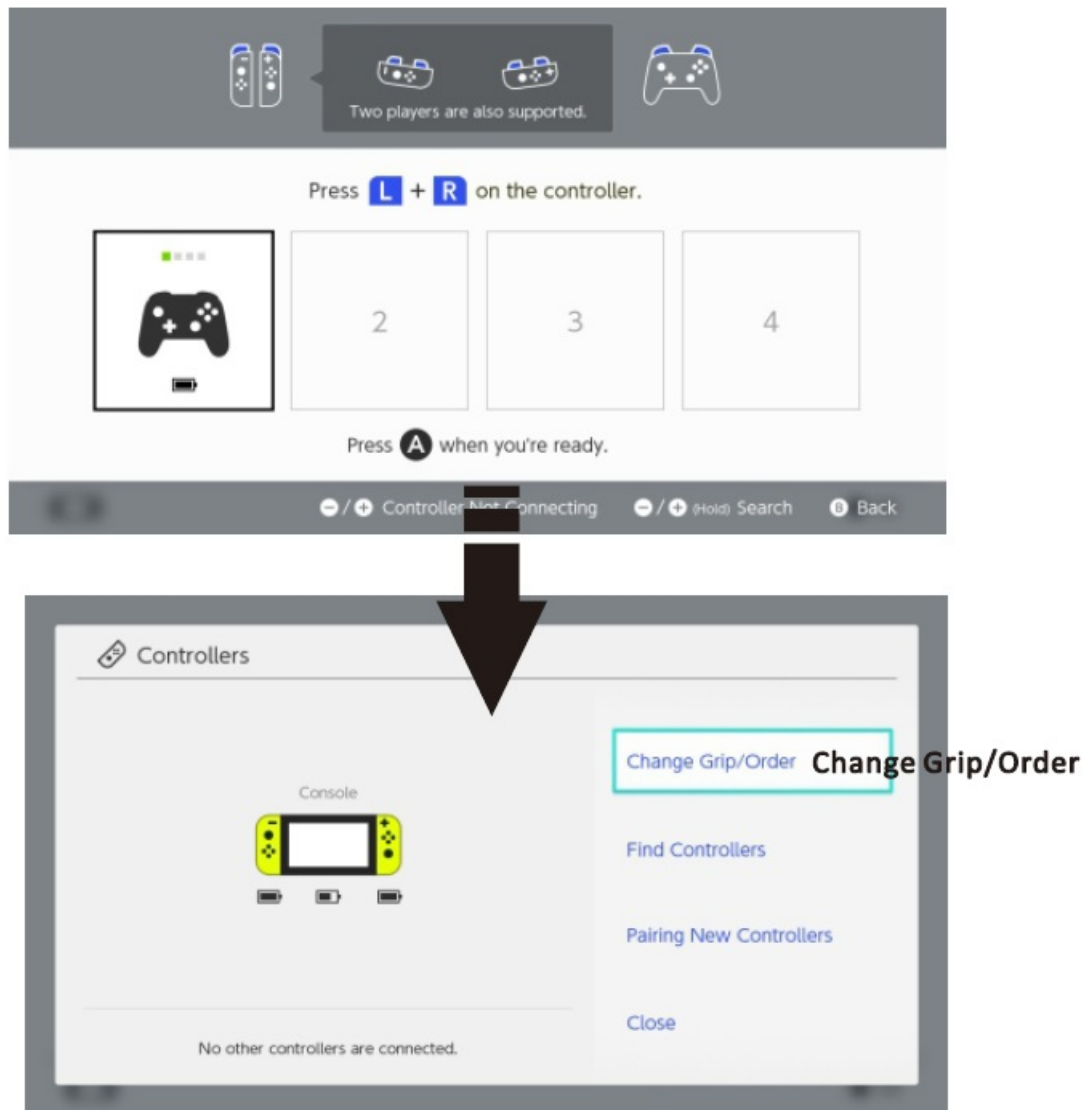
(3)



(4)

TROUBLE SHOOTING for first connection

- Solution 1: When your controller has been connected, please just press [A Button] one time to confirm.
- If you press two times A button, controller connected will be disconnected.
- [Change Grip/Order] means disconnect all the controllers that has been connected.



After you connected your controller and return to this step, please DO NOT press [A button] again, you can press [B button) or

[Home button]

Solution 2: Because Bluetooth Pairing Problems between NS Switch and controller, If you can't finish the first connection, please restart your NS Switch as below and try again.

- Hold the power button located on the top of the Switch for around 5 seconds
- Under sleep mode, you will see "Power Options"
- Under Power Options, you can choose to restart or turn the power off

FCC Warning

This device complies with Part 15 of the FCC Rules. Operation is subject to the following two conditions:

1. This device may not cause harmful interference, and
2. this device must accept any interference received, including interference that may cause undesired operation.


NOTE 1: This equipment has been tested and found to comply with the limits for a Class B digital device, pursuant to part 15 of the FCC Rules. These limits are designed to provide reasonable protection against harmful interference in a residential installation. This

equipment generates, uses and can radiate radio frequency energy and, if not installed and used in accordance with the instructions, may cause harmful interference to radio communications. However, there is no guarantee that interference will not occur in a particular installation. If this equipment does cause harmful interference to radio or television reception, which can be determined by turning the equipment off and on, the user is encouraged to try to correct the interference by one or more of the following measures:

- Reorient or relocate the receiving antenna.
- Increase the separation between the equipment and receiver.
- Connect the equipment into an outlet on a circuit different from that to which the receiver is connected.
- Consult the dealer or an experienced radio/TV technician for help.

NOTE 2: Any changes or modifications to this unit not expressly approved by the party responsible for compliance could void the user's authority to operate the equipment. The device has been evaluated to meet general RF exposure requirement.

Documents / Resources

	Shenzhen Haihongchang Electronics HHC-W116 Pro Controller for WU [pdf] User Manual HHC-W116, HHCW116, 2A6UZ-HHC-W116, 2A6UZHHCW116, HHC-W116 Pro Controller for WU, HHC-W116, Pro Controller for WU
---	--