



Shenzhen Golden Vision Technology Development S5 Smart Camera User Manual

[Home](#) » [Shenzhen Golden Vision Technology Development](#) » Shenzhen Golden Vision Technology Development S5 Smart Camera User Manual 

Contents

- [1 Shenzhen Golden Vision Technology Development S5 Smart Camera](#)
- [2 Basic Parameters](#)
- [3 Component Description:](#)
- [4 Install APP](#)
- [5 Maintenance records:](#)
- [6 FCC Statement:](#)
- [7 Documents / Resources](#)
- [8 Related Posts](#)

SHENZHEN

Shenzhen Golden Vision Technology Development S5 Smart Camera



Basic Parameters

- Product Name: Smart Camera
- Pixel: 2.0Mp/3.0MP deo
- Compression: H.264 H.265 High Profile Image
- Enhancement: Digital Wide Dynamic 3D Noise Reduction
- Local Storage: MicroTF card Wireless
- Encryption: WEP/WPA/WPA2 Encryption Power Input. 5V 1A(Min) Total Power
- Consumption: 5W (Max)
- WirelessStandard: 2,4G 802.11 b/g/n Support Platform: Android/iOS

Component Description:

Reset Button: Long press “reset” hole 5sec, reset success, It is recommended to insert 8-128GB high-speed Micro TF card, otherwise it will not be able to store, view historical video and support Important functions such as firmware upgrading. Packing list: Smart Camerax 1, Manual x 1, USB Power Cord x 1, Power Adapter x 1,Screw Accessories Package x 1

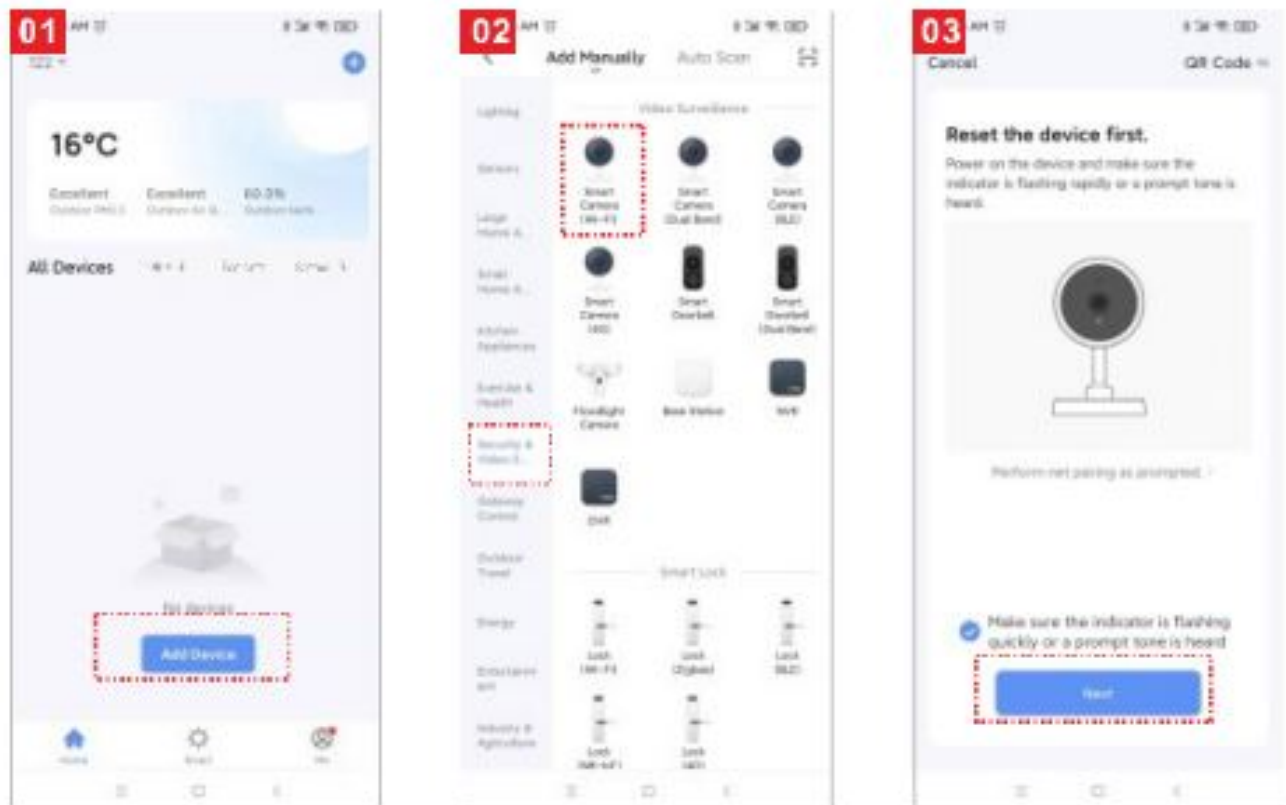
Install APP

Download APP: scan the QR code below to download and instal. Register and login: open the “Smart Life” APP to register and login according to the prompts.



Add The Device-Scan QR code mode

- Make sure Wi-Fi is available and connected to the Internet.
- Connect the camera to the power, then system startup completed,
- Open “Smart Life” APP press the ‘+’ in the upper right corner of the main screen (Figure 01), choose “Security & Video Surveillance” click “Smart Camera” (Figure 02) to
- add camera; and then click “Next step” (Figure 03);

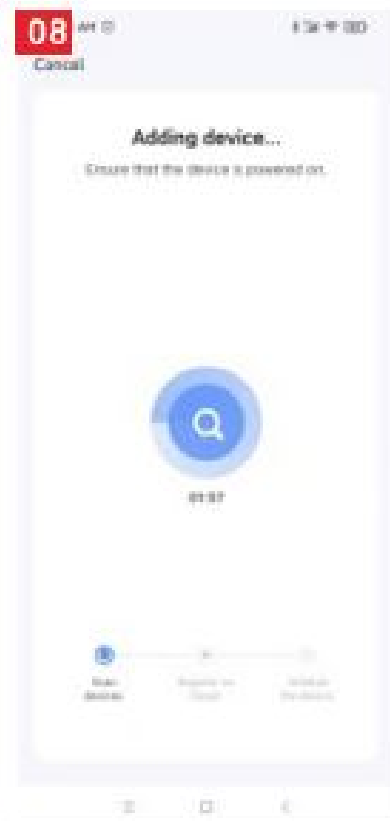
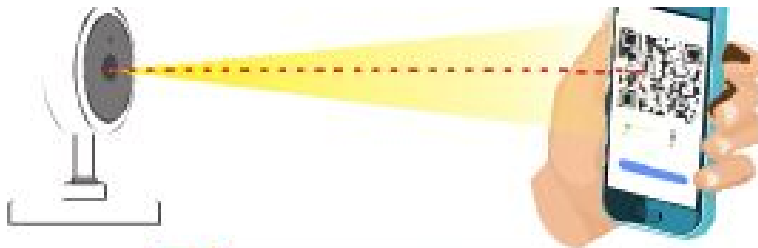


Please note that only 2.4 GH W-Fi network is supported;

- If the mobile phone is not connected to w-fi, please click “Connect to Wi-f (Figure 04);
- It will jump to the WLAN interface and connects Wi-Fi (Figure 05).
- If the phone is connected to Wi-Fi (Figure 06):

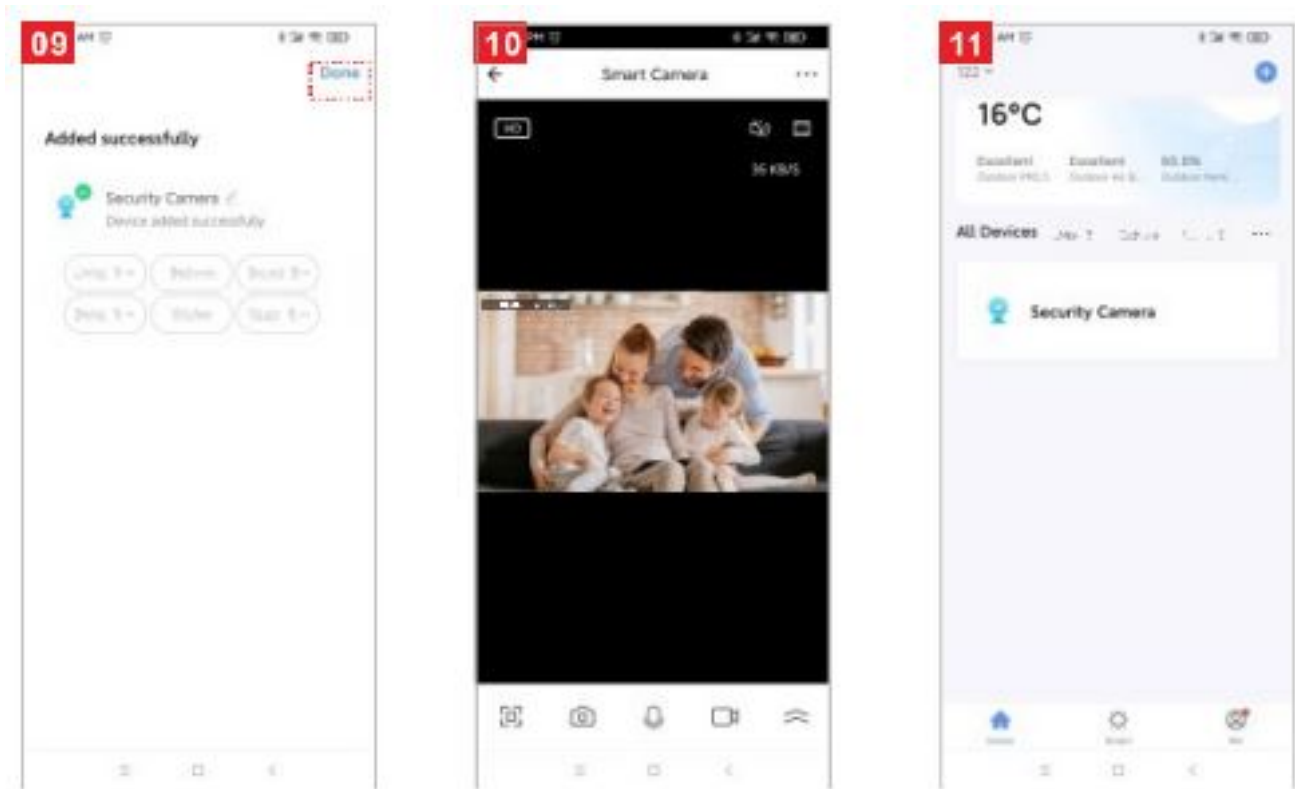


- A QR code will prompt on your screen and you need to scan it with the Smart Camera. (the camera is about 20-30 cm away from the mobile phone lens). Then click “hear the prompt sound” (Figure. 07. “
- connecting” (Figure, 08)



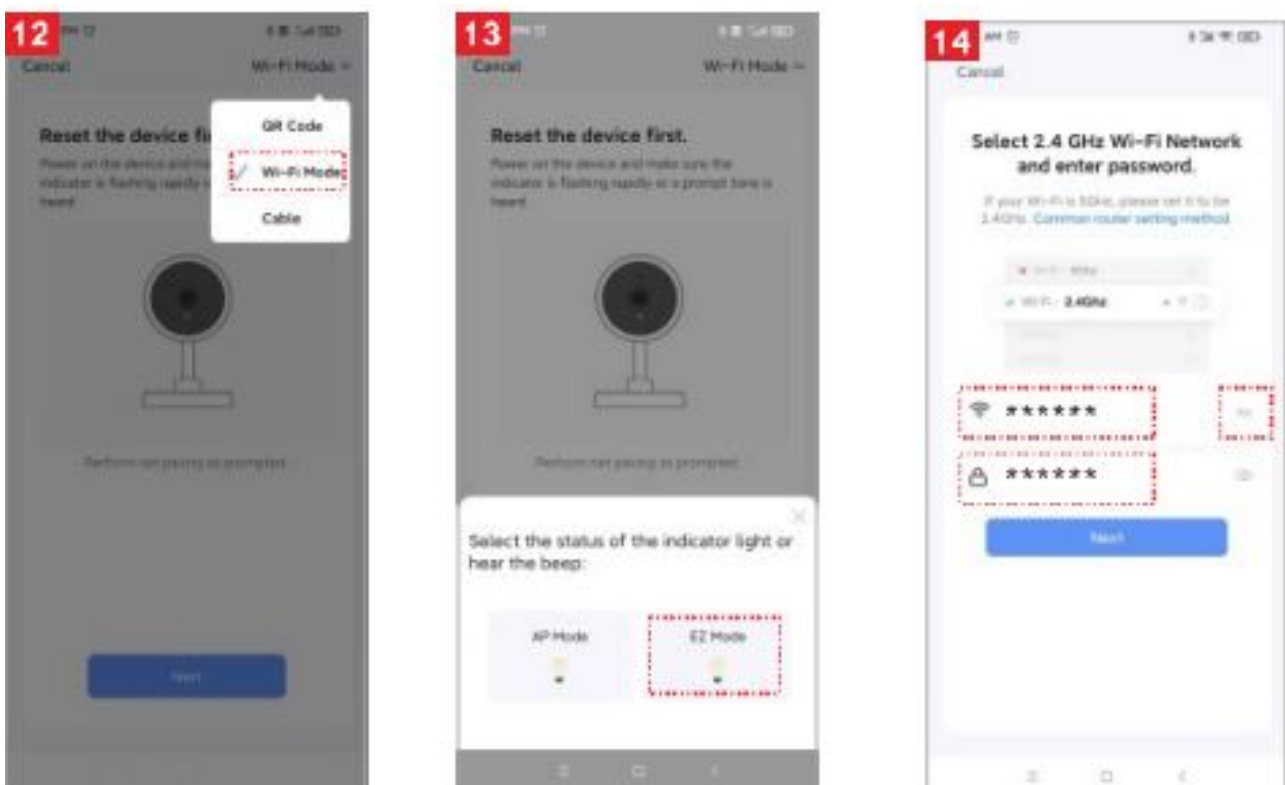
- connection completed(Figure 09), and click “Done” Then jump to preview interface (Figure 10)

- After closing the device preview interface, the interface returns to the APP home page, At this time, the connected device will appear on the APP home page (Figure 11).
- Then you can click directly to the device interface to see the monitoring situation without re-adding afterward.



Add device-WIFI fast connection mode

- Select "AP Mode" (Figure 12)
- Click Next (Figure 13)
- Enter the account and password that can connect to WIFI (Figure 14)



-

Part Name	Harmful Substance					
	Pb	Hg	Cd	Cr(VI)	PBB	PBDE
shell	<input type="radio"/>	<input type="radio"/>	<input type="radio"/>	<input type="radio"/>	<input type="radio"/>	<input type="radio"/>
Board	X	<input type="radio"/>	<input type="radio"/>	<input type="radio"/>	<input type="radio"/>	<input type="radio"/>
charger	<input type="radio"/>	<input type="radio"/>	<input type="radio"/>	<input type="radio"/>	<input type="radio"/>	<input type="radio"/>
annex	<input type="radio"/>	<input type="radio"/>	<input type="radio"/>	<input type="radio"/>	<input type="radio"/>	<input type="radio"/>

This form is based on the provisions of SJ/T 11364.

This form is based on the provisions of SJ/T 11364 This product conforms to RoHS environmental protection requirements, At present, there is no mature technology in the work to replace or reduce the lead content in the electronic oceramics. porcelain, optical glass, steel and copper alloy.

Maintenance records:

- Maintenance time:
- Fault conditions Fault cause:
- Troubleshooting:
- Return and exchange proof Date of validity:
- Original device ID:
- New device ID maintenance personnel signature:
- Maintenance Department seal

FCC Statement:

This equipment has been tested and found to comply with the limits for a Class B digital device. pursuant to part 15 of the FCC Rules. These imils are designed lo provide reasonable protection agains harmful interference in a residential installation. This equipment generates. uscs and can radiate radio froquency energy and, if not installcd and used in accordance with the instructions, may cause harmful interterence to radio communications. However, there iS no guarantee that interference will not occur ina particular installation, If this equipment does cause harmful interference to radio or television reception, which can be determined by turning the equipment off and on, the user is encouraged to try t0 correct the interference by one or more of the following measures

- Reorient or relocate the receiving antenna.
- In crease the separalion between the equipment and receiver.
- Connect the equipment into an outlet on a circuit different from that to which the recoiver is connctcd.

Consult the dealer or an experienced radio/TV technician for help. Caution:

Any changes or modifications to this device not explicitly approved by manufacturer could void your authority to operate this equipment. This dovice complics with part 15 of thc FCC Rules. Opration is subject to the following two conditions:

- This device may not cause harmful interterence, and
- this device must accept any interference received, including interference that may cause undesired operation.

RF Exposure Information:

This cquipmct complics with FCC radiation exposurc limits set forth for an uncontrolled environment. This equipment should be installed and operated with minimum distance 20cm between the radiator &your body,

Documents / Resources



[Shenzhen Golden Vision Technology Development S5 Smart Camera](#) [pdf] User Manual
S5, 2APD7-S5, 2APD7S5, S5 Smart Camera, S5, Smart Camera