



Shenzhen Freesun Technology DT01 Ditto ProjectorDT01 Ditto Projector User Guide

[Home](#) » [Shenzhen Freesun Technology](#) » Shenzhen Freesun Technology DT01 Ditto ProjectorDT01 Ditto Projector User Guide 

SHENZHEN[®]

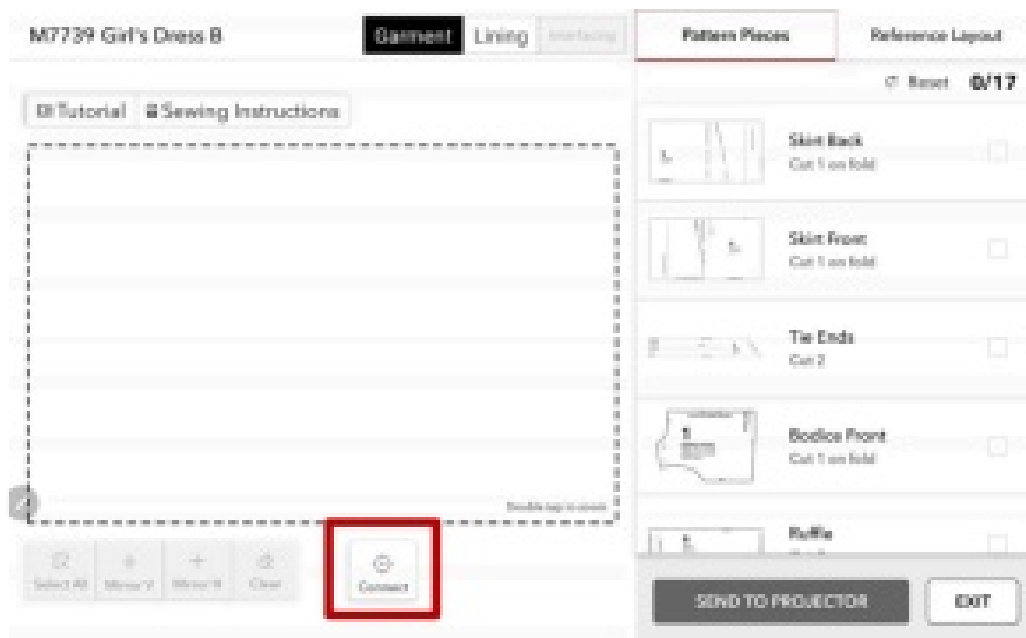
Ditto Projector
DT01

New calibration steps for ditto projector and workspace
quick start

Contents

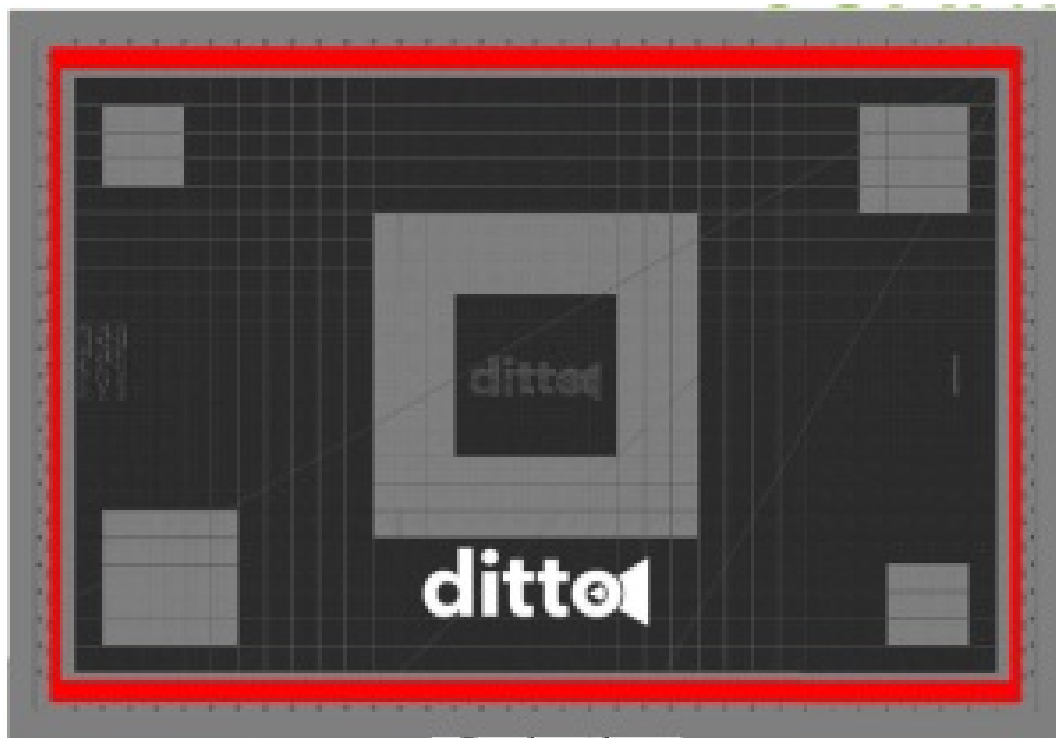
- [1 Connection steps](#)
- [2 Step 1](#)
- [3 Step 2](#)
- [4 Step 3](#)
- [5 Step 4](#)
- [6 Step 5](#)
- [7 Done](#)
- [8 Workspace](#)
- [9 FCC Warning](#)
- [10 Documents / Resources](#)
- [11 Related Posts](#)

Connection steps

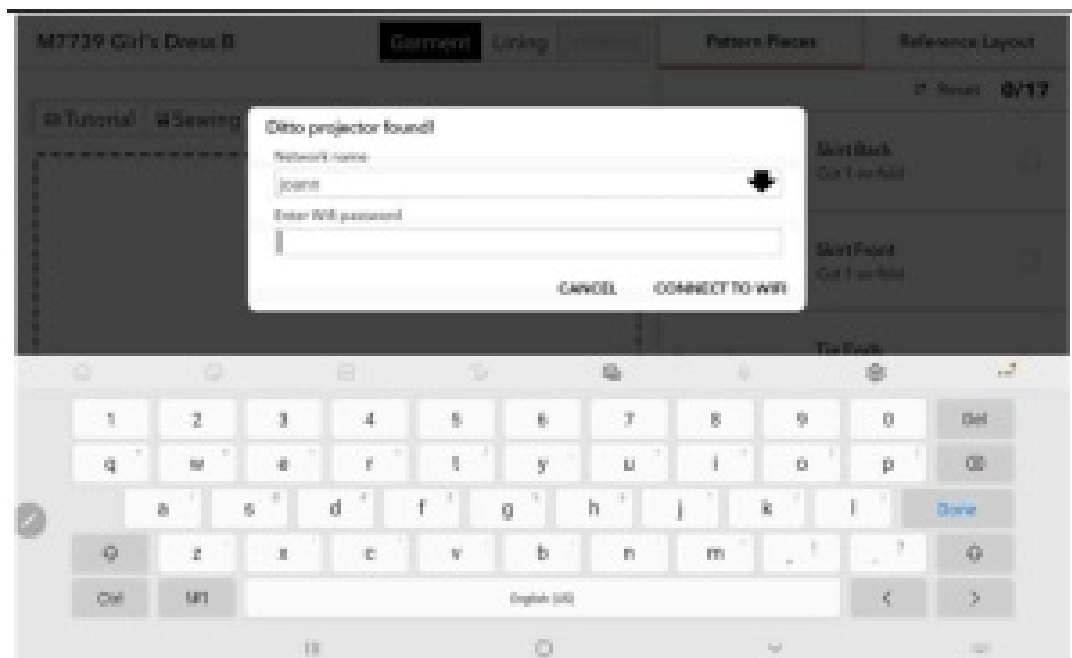


Navigate to open one pattern in the workspace. User to select Connect within workspace

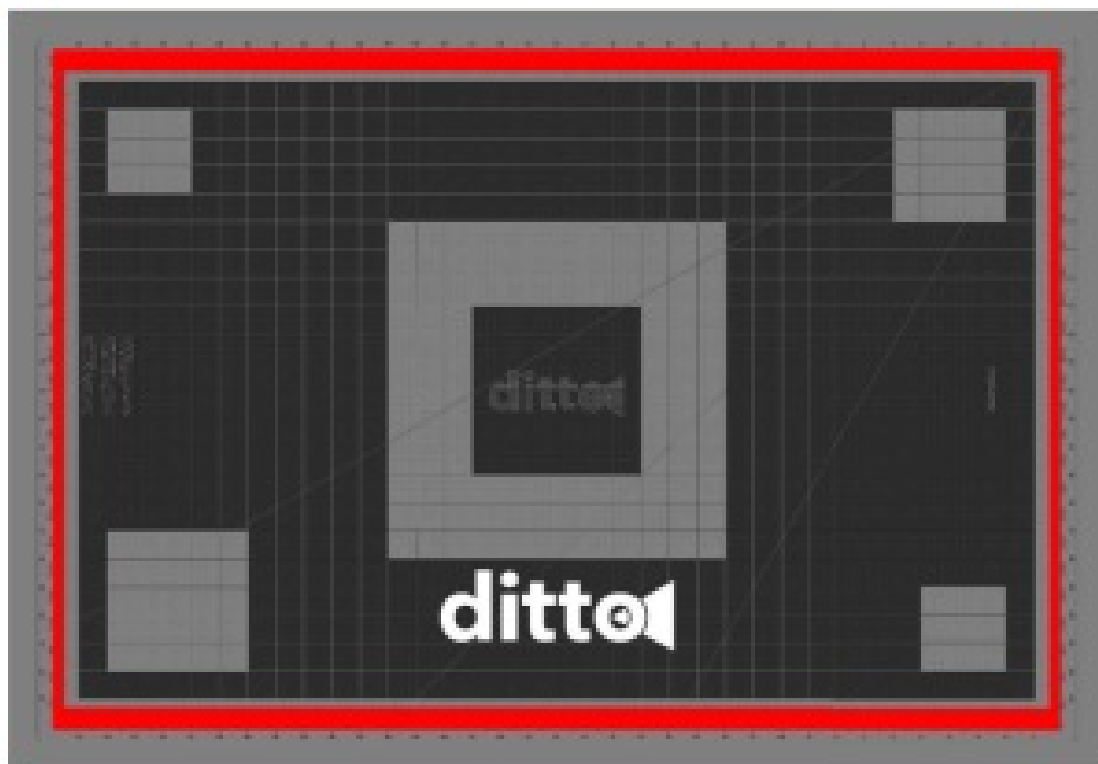
JOANN



Projection



User to select a Wi-fi network and enter the password (**Current prototype may need user to select a ditto device from the Bluetooth list**)

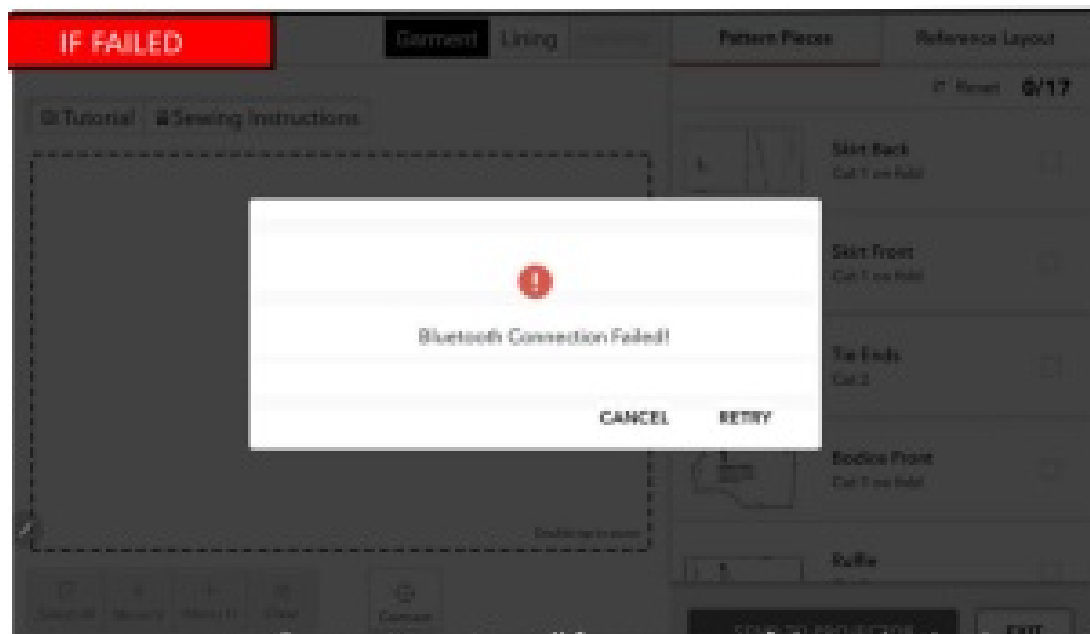


Projection

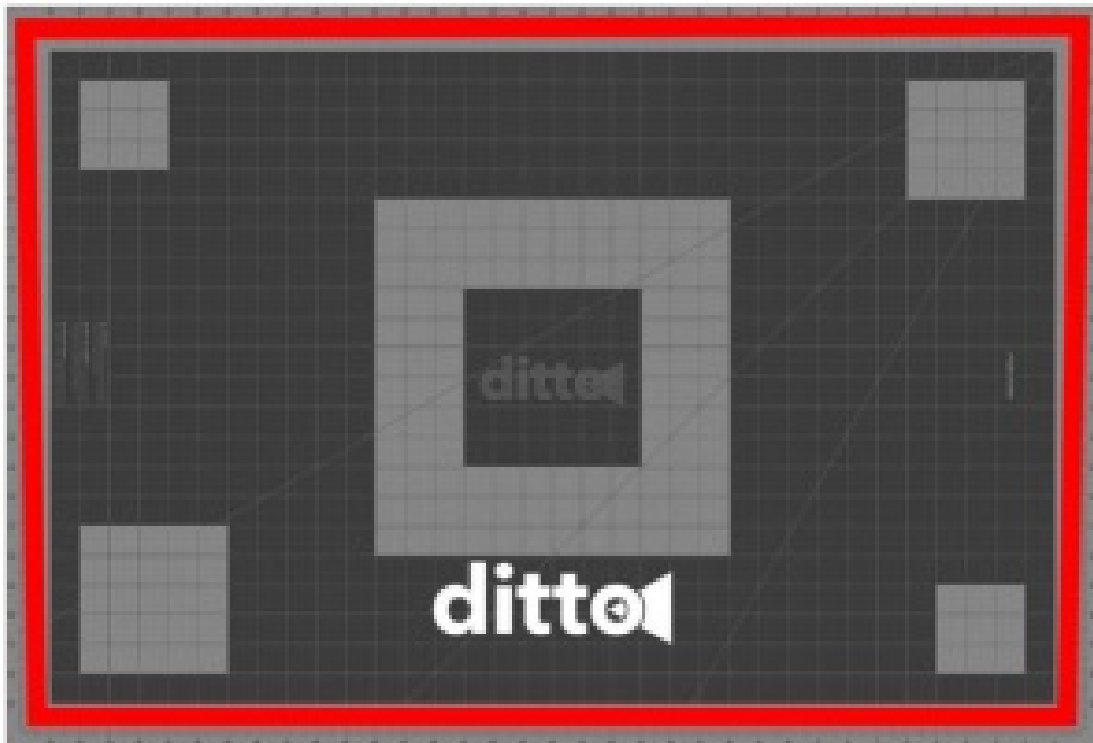


User will be advanced to optional calibration pop-up below





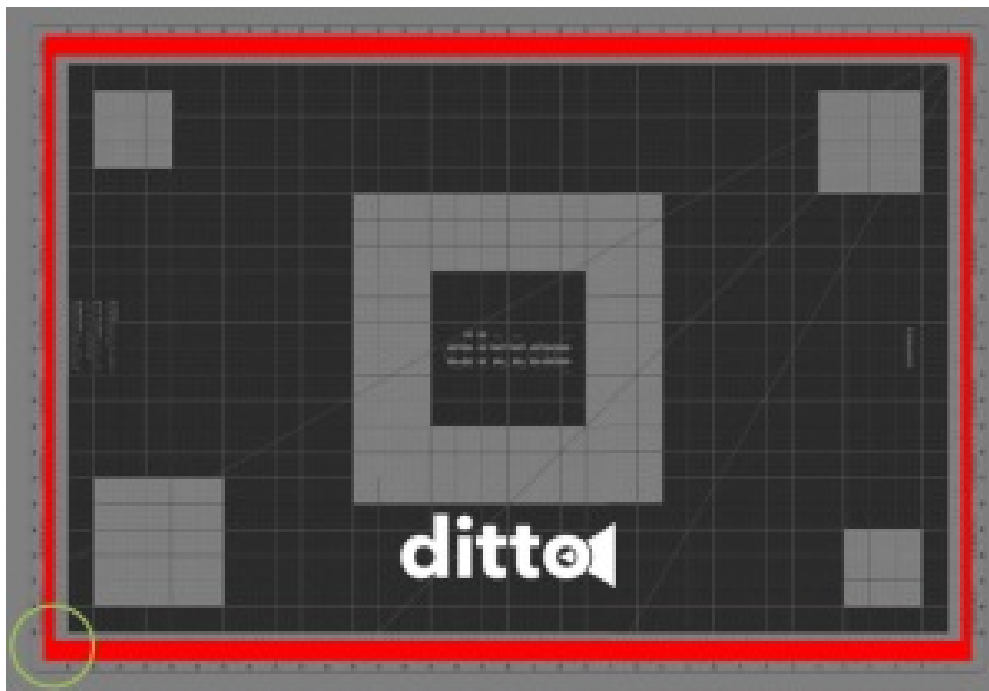
Users will be notified of what went wrong





Make sure
projector has
power

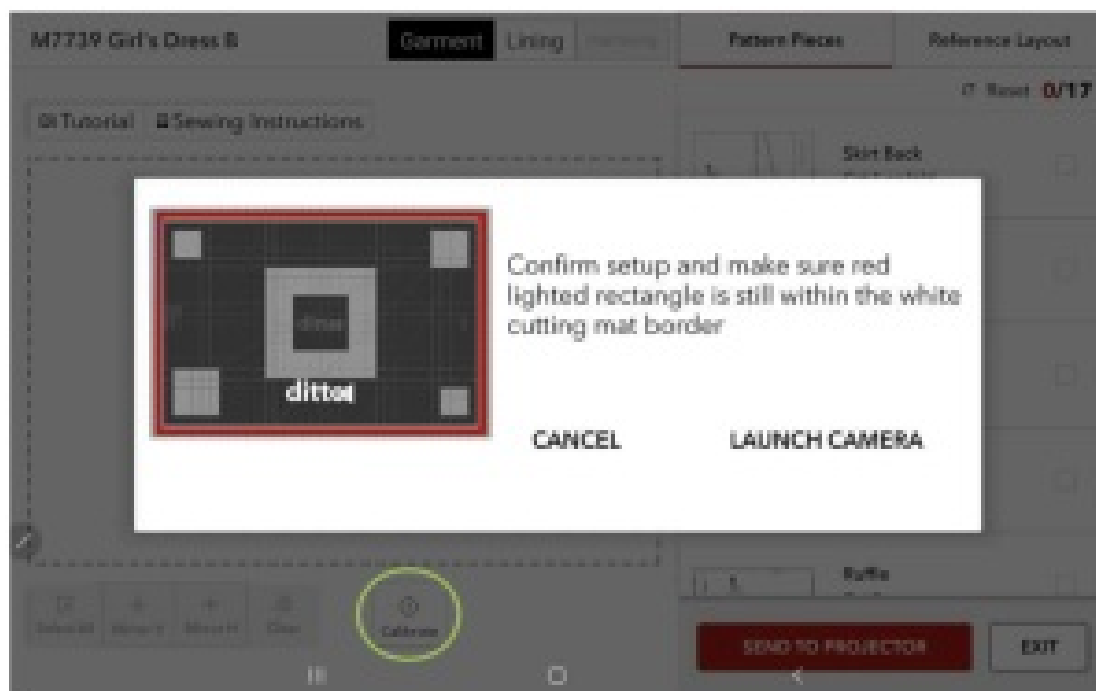
Step 1



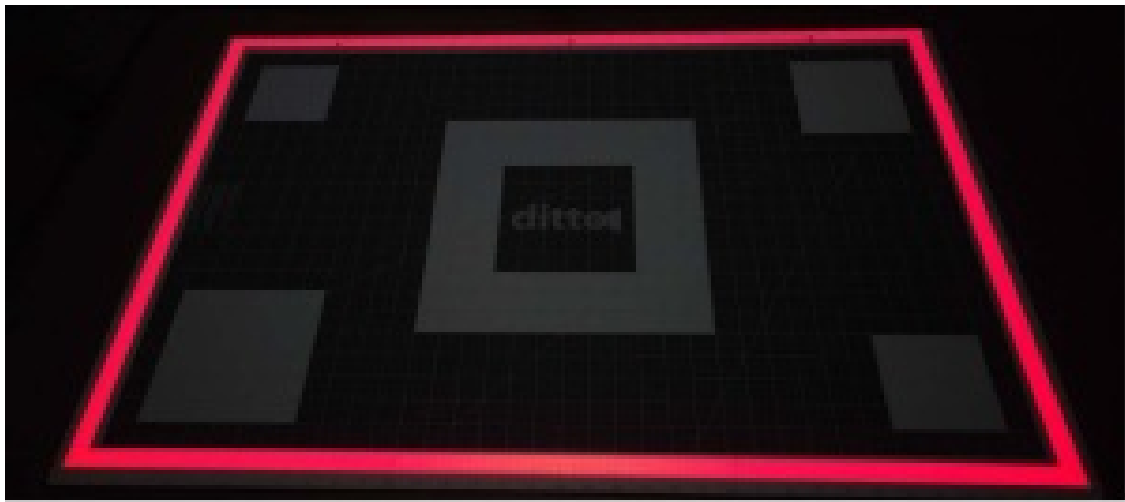
Setup projection stay projected until the app is connected to ditto projector

- Make sure the room is dimly lit showing the projected frame as vivid red. **(TIP: Try to set up the room with dim lighting, but not a dark room)**
- Slide the projector up or down or shift the cutting mat to align the thick red-lighted lines within the white cutting mat border **(TIP: target to place the red lines right in the middle of the white border, a lighted frame may be skewed)**

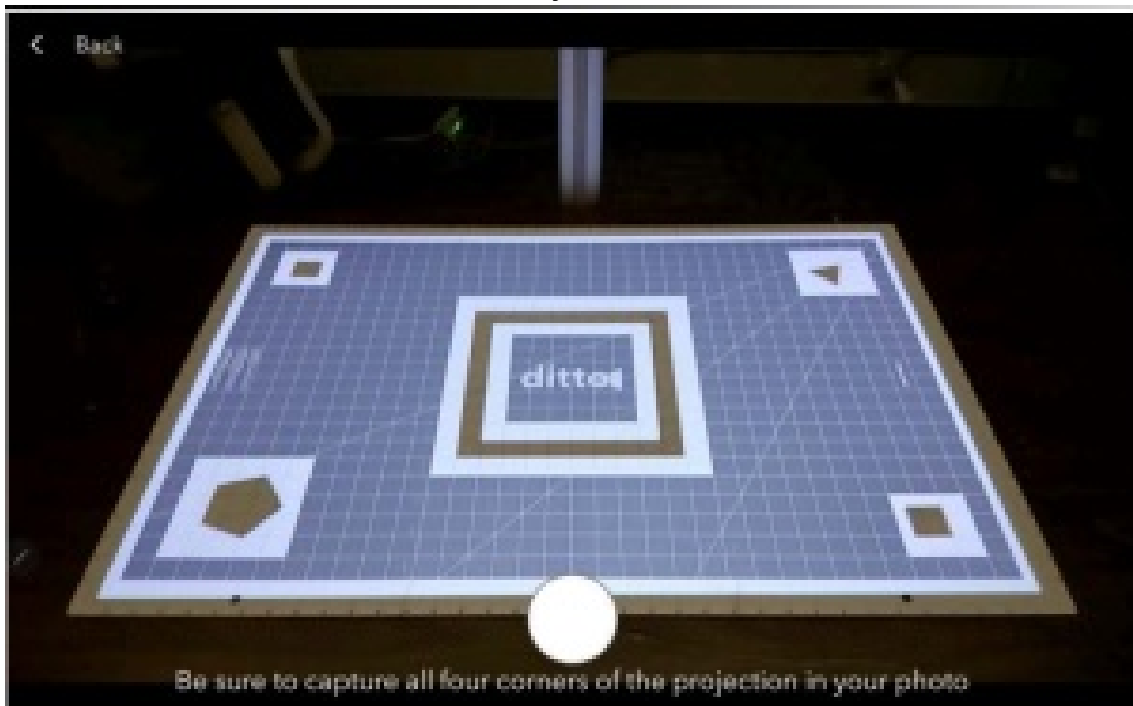
Step 2



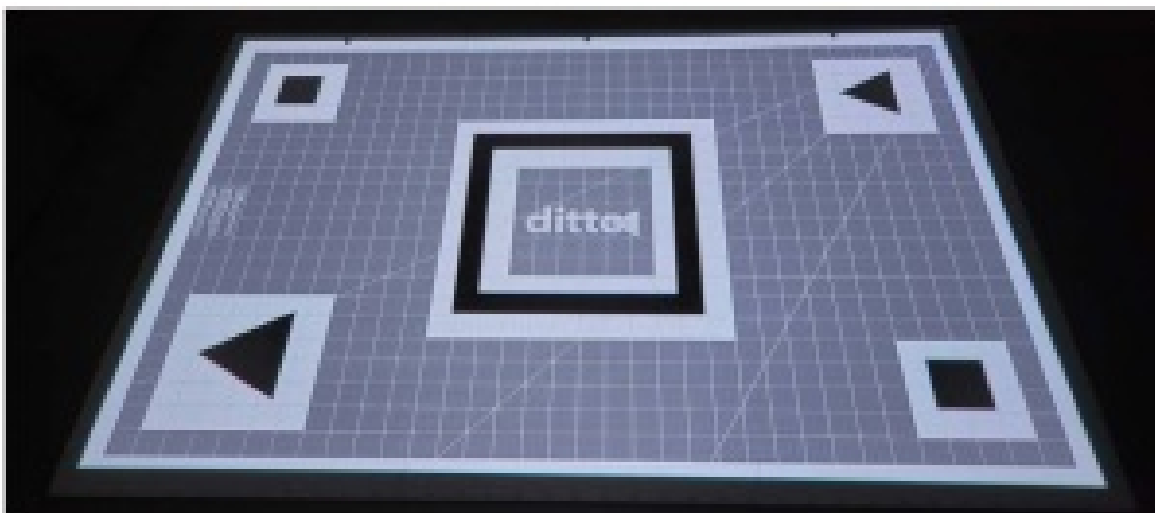
Make sure the projector is connected to the app. Click Calibrate in the workspace will bring up a setup image and a pop-up in-app



Projection



Click Launch camera to project calibration pattern



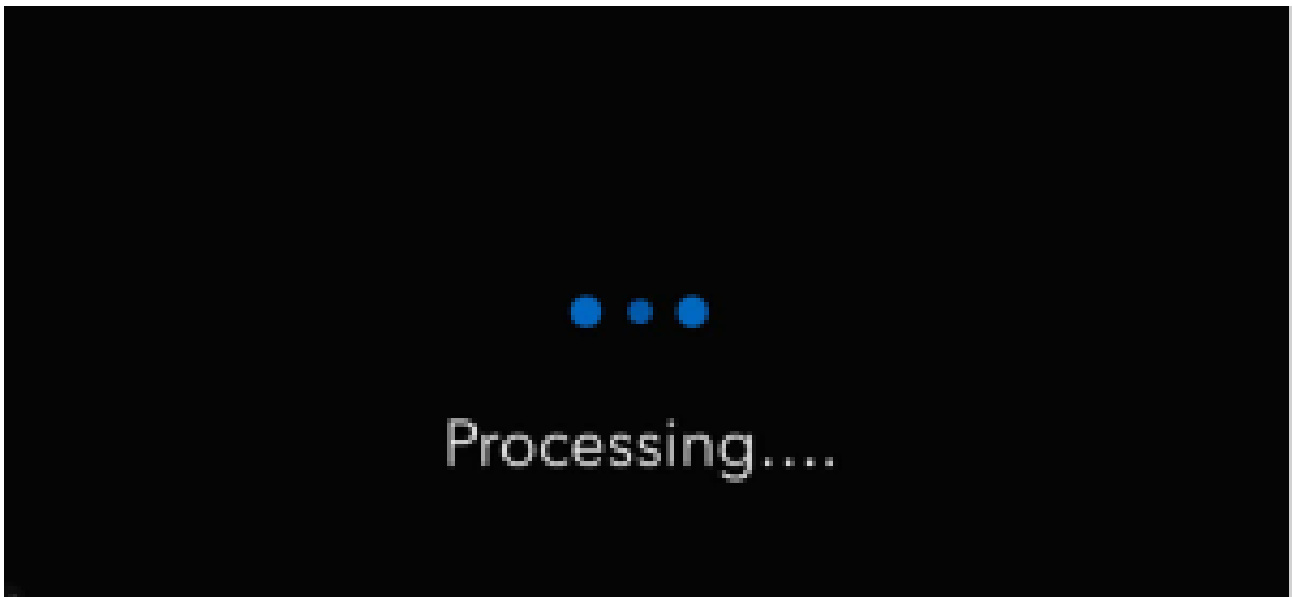


Step 3

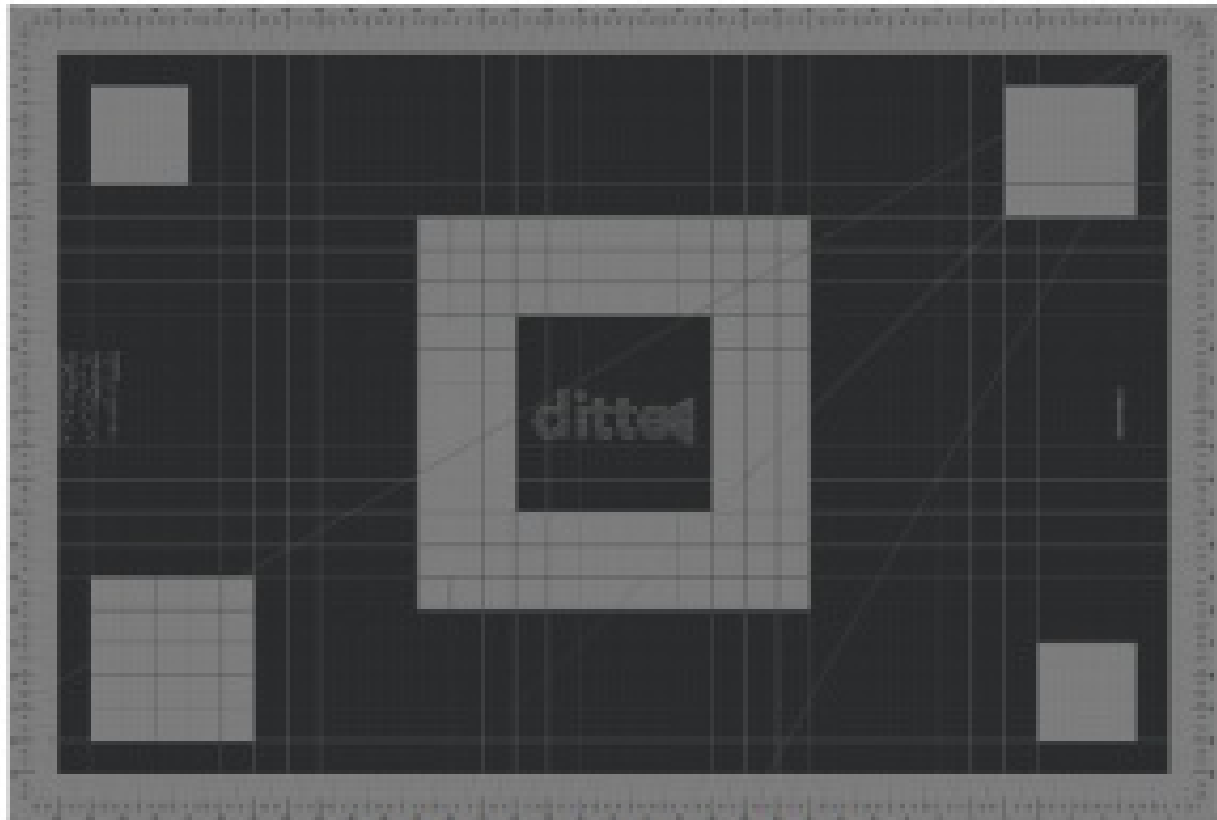


- Then, when the camera is launched within the app, take a photo of the entire calibration projection. It is best to stand opposite the table side to the beam and hold the device up high. **(TIP: make sure camera is at eye level not up too high shooting down)**
- Be sure to capture all four corners of the projection in your photo. Be sure your fingers or anything else do NOT obstruct the photo view.

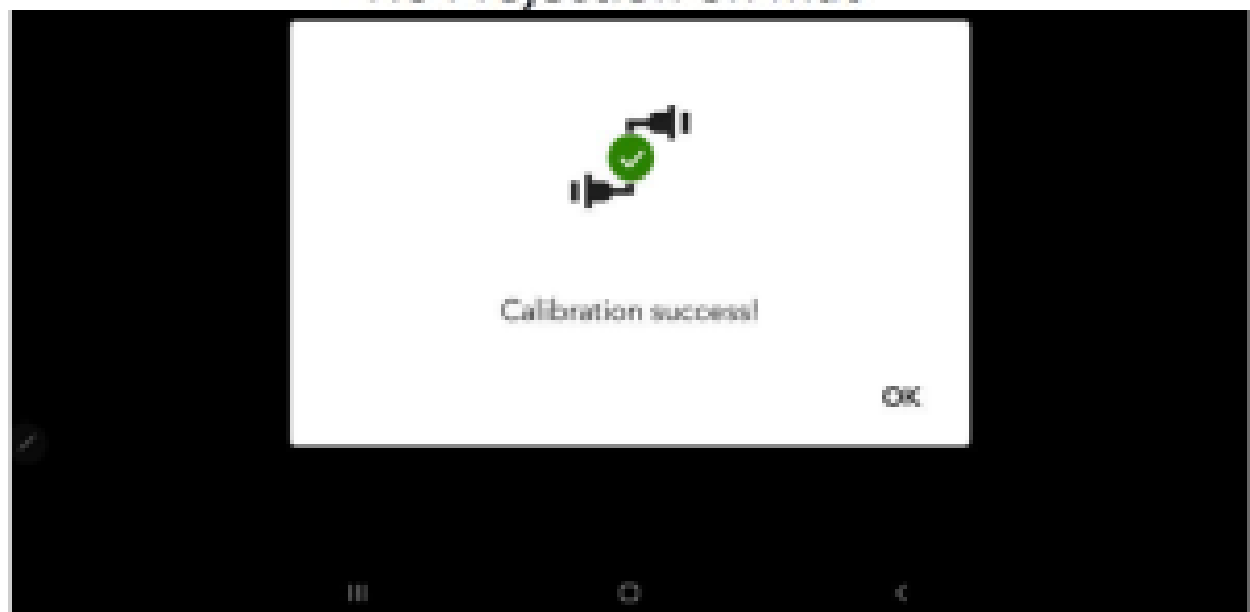
Step 4



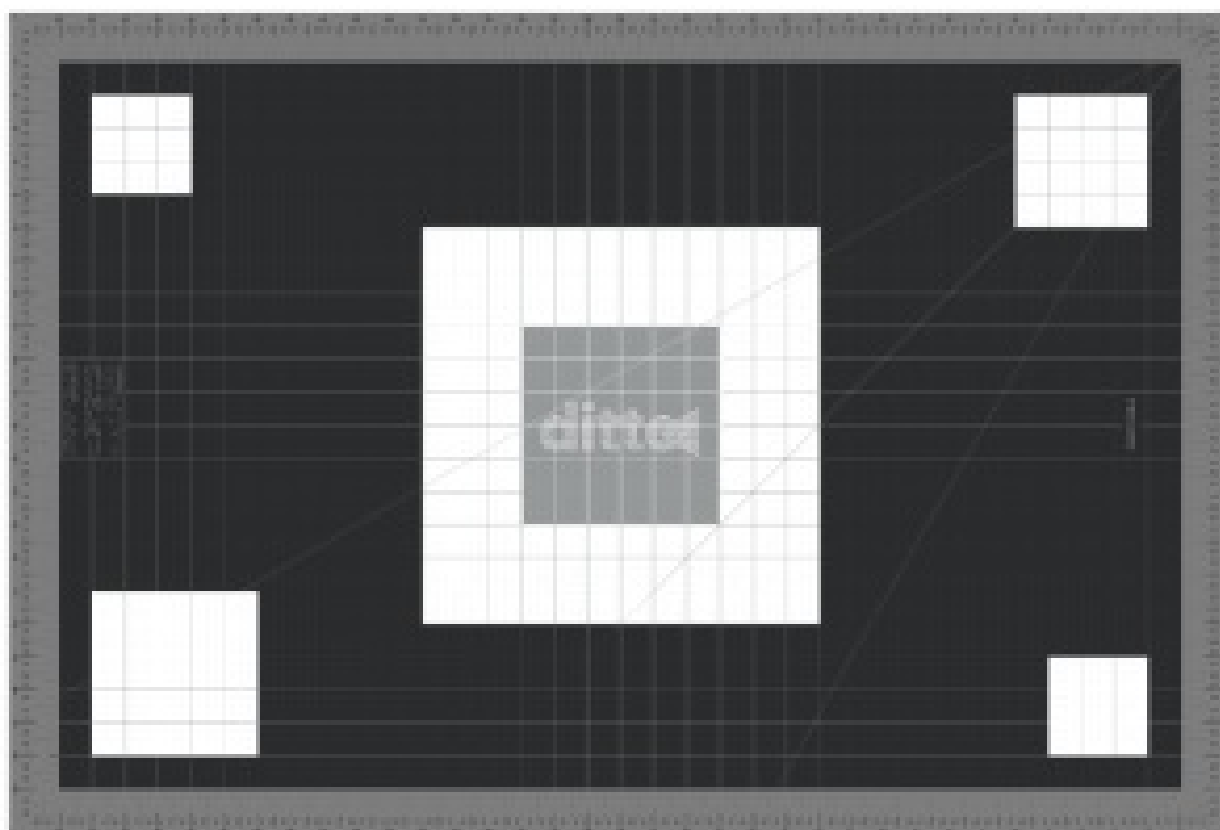
Processing of image takes a couple of second



No Projection on mat

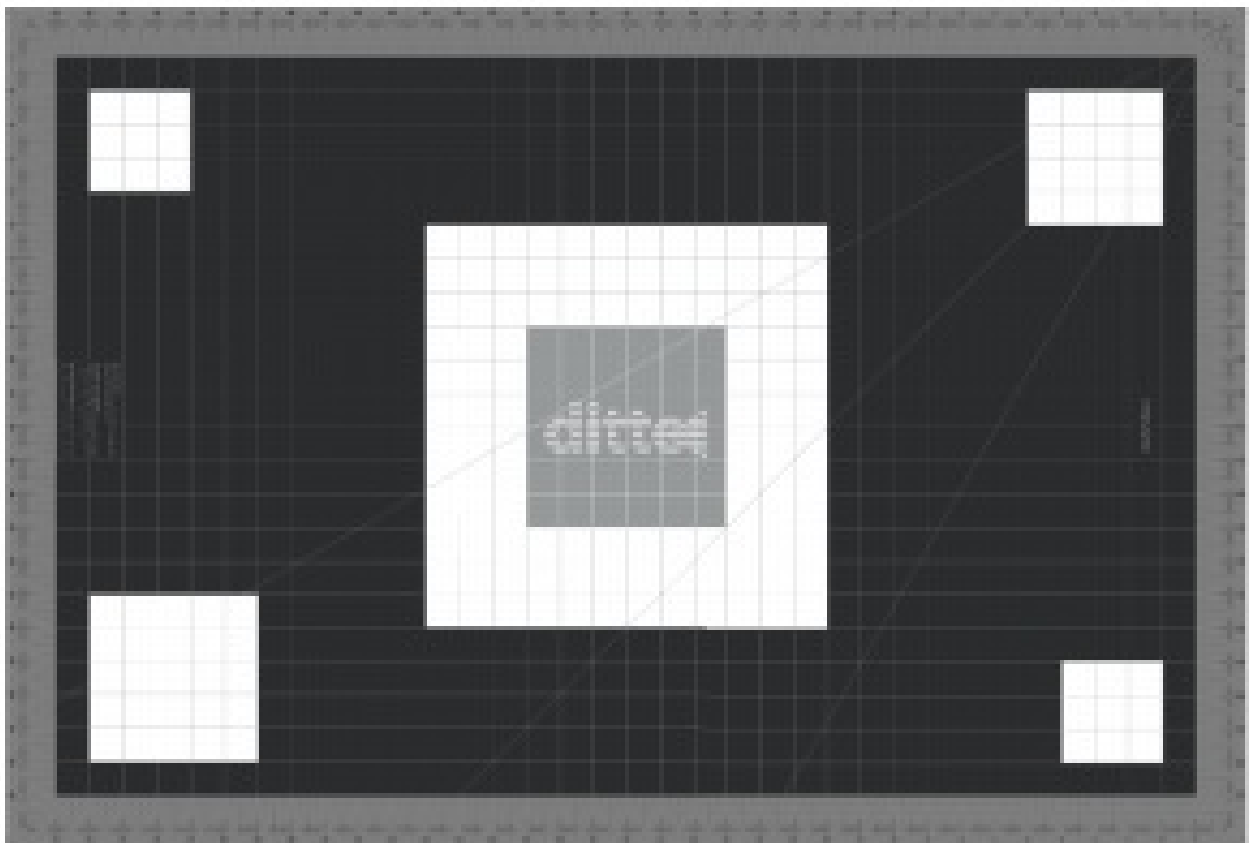


If success, there will be a confirmation, see next page



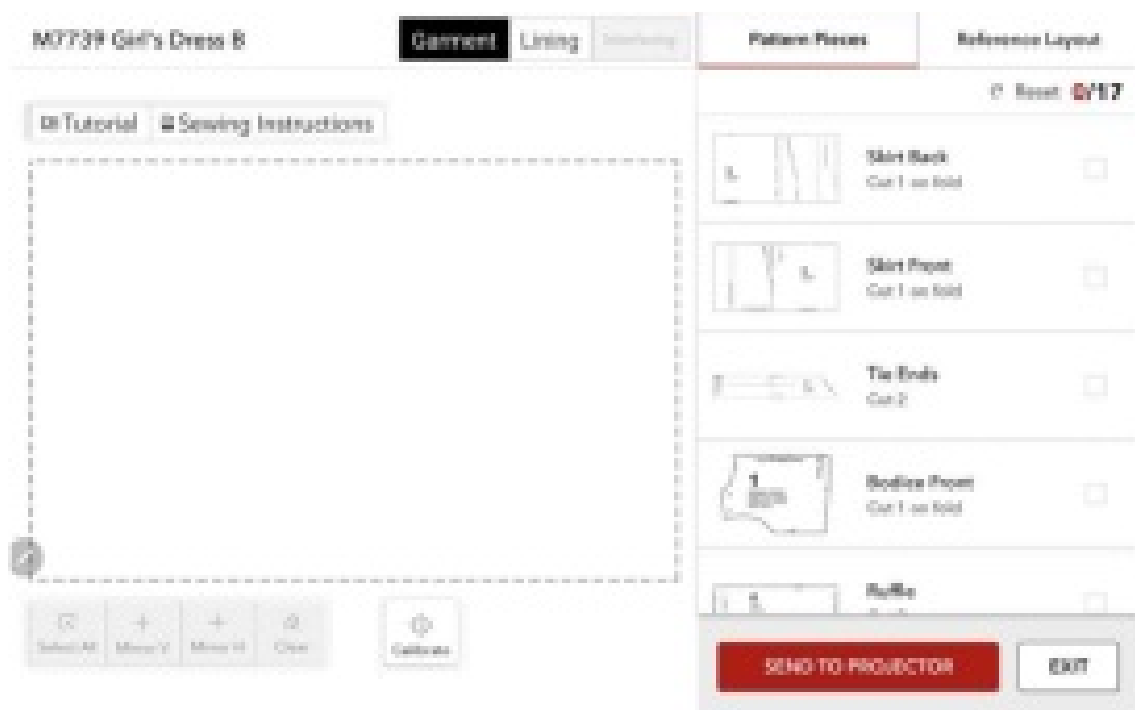


Step 5

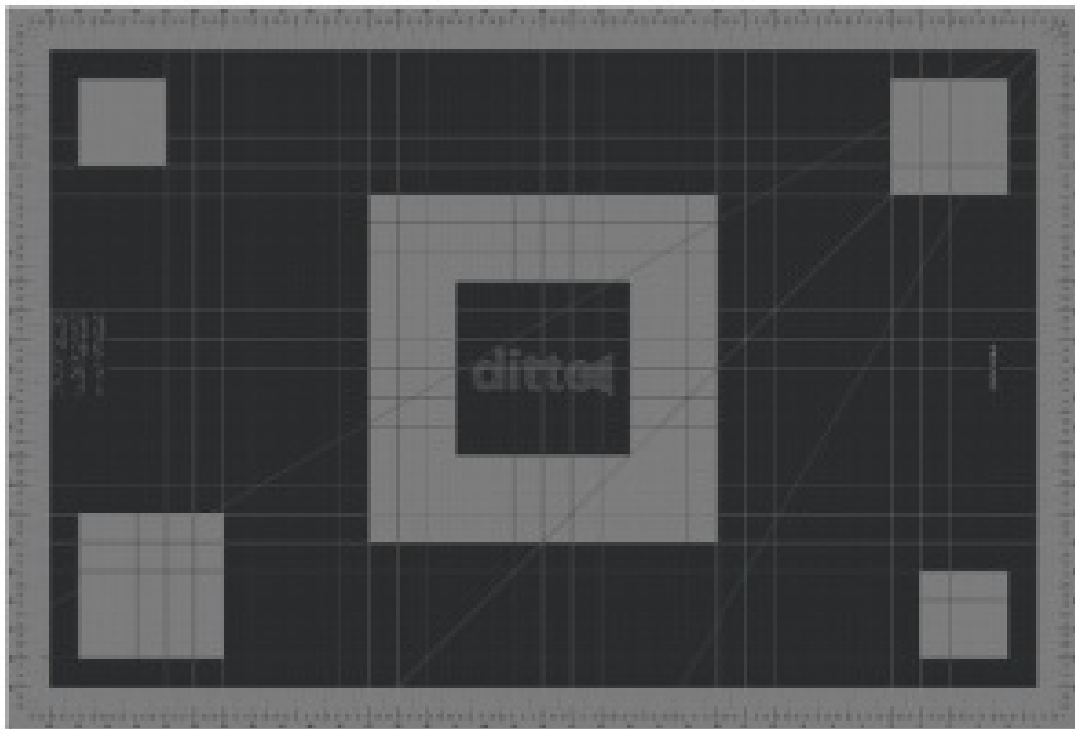


- Calibration confirmation projection will be displayed after the photo is processed for confirming successful calibration, please confirm the lighted squares are within the white squares on the cutting mat.

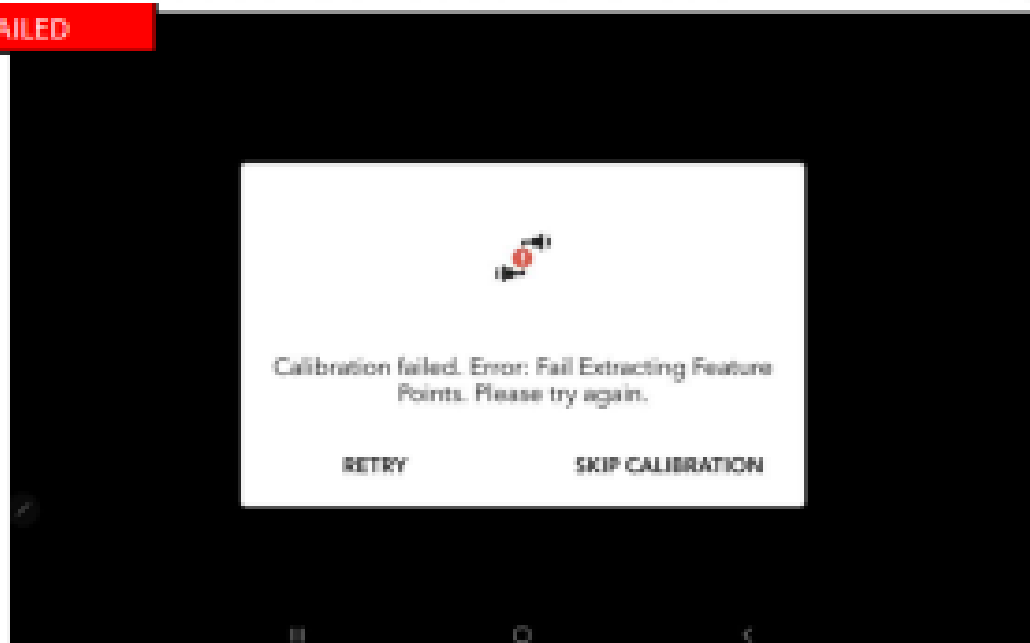
Done



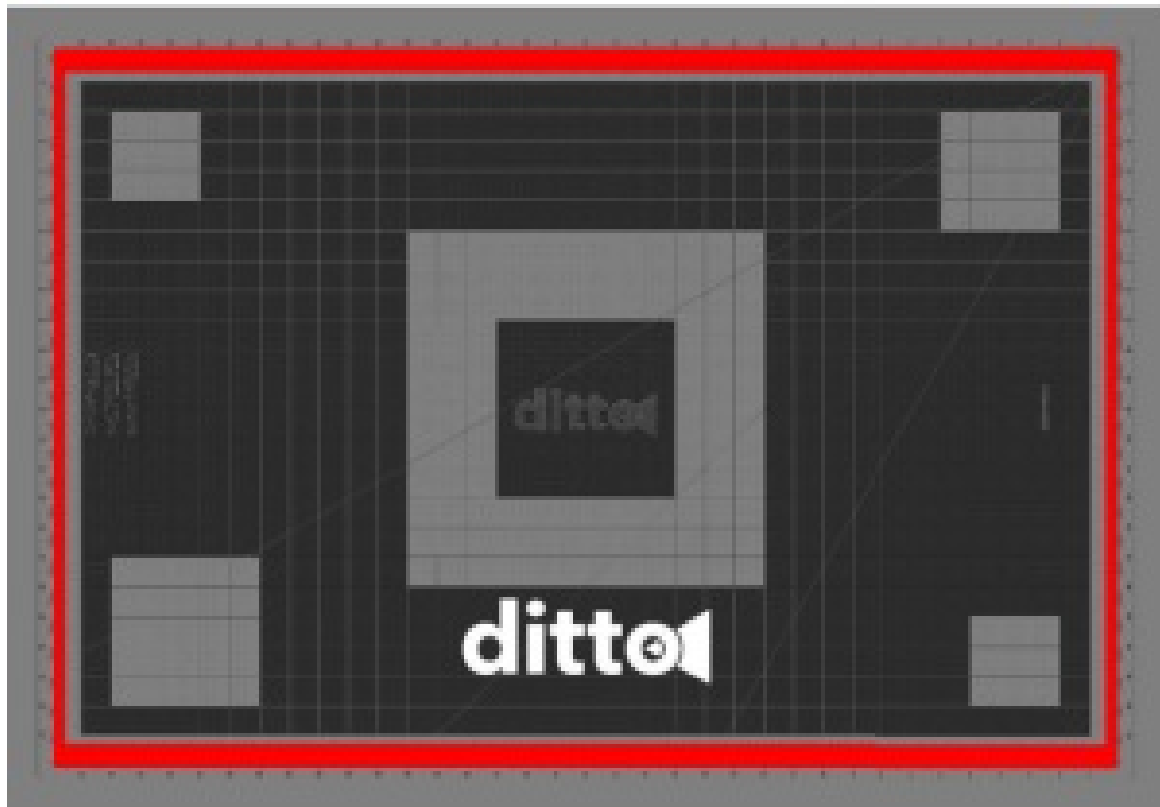
User closes success pop-up to go back the workspace



IF FAILED



If failed, there will be a pop-up showing the error



Workspace



The ditto workspace is the area where pattern pieces are arranged for projection

- **To add a pattern piece to the workspace, long press it and drag it over**
- You can place and project multiple NON-spliced pieces into the workspace at the same time (demonstrate this – many research participants thought they could only project one piece at a time)
- Next to each pattern piece is a check box to keep track of what's been cut
- The Reference Layout at the top right allows you to select a layout to follow when arranging pattern pieces in the workspace
- Select a layout for your fabric width (45" or 60")
- To enlarge the layout, double-tap the thumbnail image
- The Workspace Tools allow you to mirror, select all, and clear
- To zoom in on one apiece, double-tap it in the workspace
- To rotate, select a pattern piece within the workspace, keep one finger stationary and drag the other finger around (pattern pieces snap to the nearest 45° increment)
- *If a rotated piece exceeds the projection workspace, it will snap back to its original position

- The Select All tool selects all the pieces in the workspace
- The Clear tool clears all the selected pieces in the workspace
- **The Send to Projector button will send the items in the workspace to the projector**

FCC Warning

This device complies with part 15 of the FCC Rules. Operation is subject to the following two conditions:

1. This device may not cause harmful interference, and
2. this device must accept any interference received, including interference that may cause undesired operation.

Any Changes or modifications not expressly approved by the party responsible for compliance could void the user’s authority to operate the equipment.

Note: This equipment has been tested and found to comply with the limits for a Class B digital device, pursuant to part 15 of the FCC Rules. These limits are designed to provide reasonable protection against harmful interference in a residential installation. This equipment generates uses and can radiate radio frequency energy and, if not installed and used in accordance with the instructions, may cause harmful interference to radio communications. However, there is no guarantee that interference will not occur in a particular installation. If this equipment does cause harmful interference to radio or television reception, which can be determined by turning the equipment off and on, the user is encouraged to try to correct the interference by one or more of the following measures:

- Reorient or relocate the receiving antenna.
- Increase the separation between the equipment and receiver.
- Connect the equipment into an outlet on a circuit different from that to which the receiver is connected.
- Consult the dealer or an experienced radio/TV technician for help.

This equipment complies with FCC radiation exposure limits set forth for an uncontrolled environment. This equipment should be installed and operated with a minimum distance of 20cm between the radiator & your body.

Documents / Resources

	Shenzhen Freesun Technology DT01 Ditto ProjectorDT01 Ditto Projector [pdf] User Guide DITTO, 2AYJ8-DITTO, 2AYJ8DITTO, DT01 Ditto Projector, Ditto Projector, Projector, DT01 Ditto Projector, Ditto Projector, Projector
---	--