

# Shenzhen Four Seas Global Link Network Technology CF-813B AC Wireless Network Card Installation Guide

[Home](#) » [Shenzhen Four Seas Global Link Network Technology](#) » Shenzhen Four Seas Global Link Network Technology CF-813B AC Wireless Network Card Installation Guide 

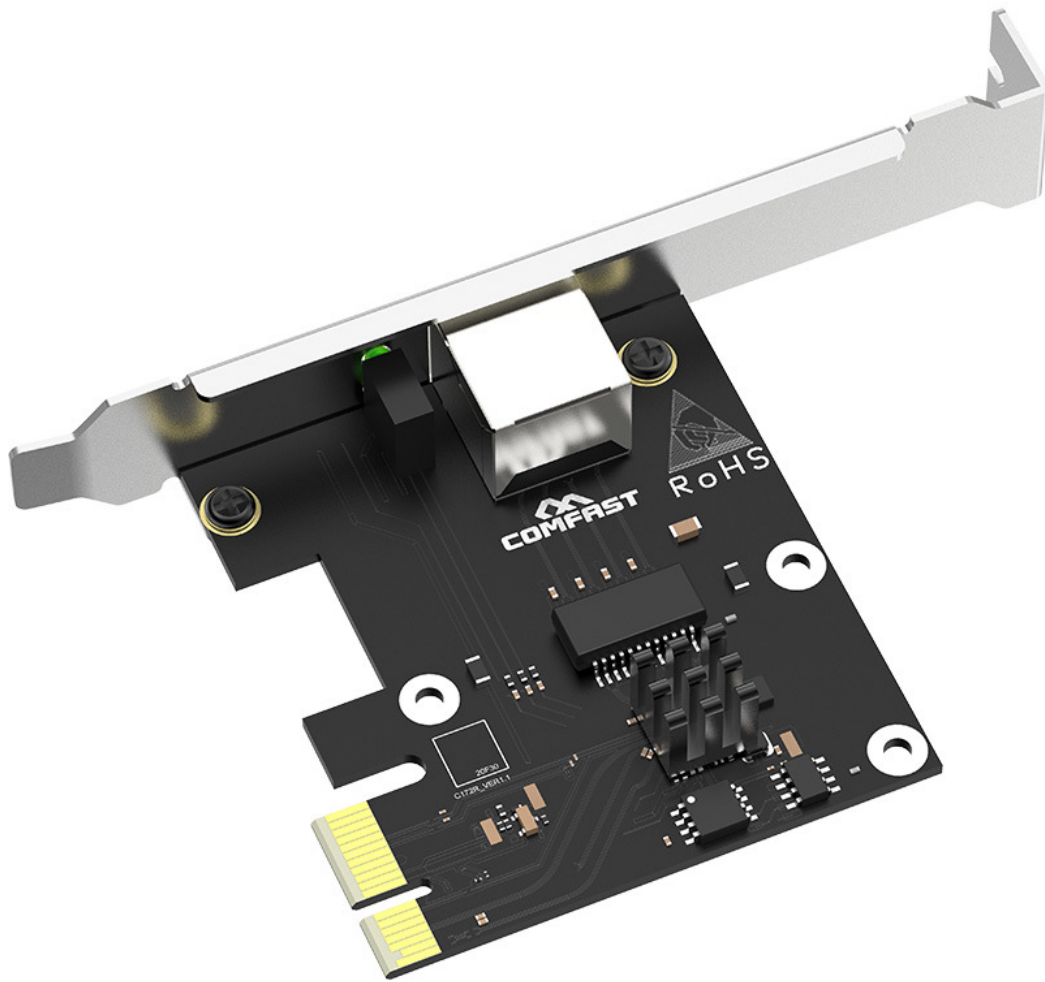
## Contents

- [1 Shenzhen Four Seas Global Link Network Technology CF-813B AC Wireless Network Card](#)
- [2 Install Wireless Adapter Driver](#)
- [3 Bluetooth Adapter Installation](#)
- [4 FCC Statement](#)
- [5 Documents / Resources](#)
- [6 Related Posts](#)



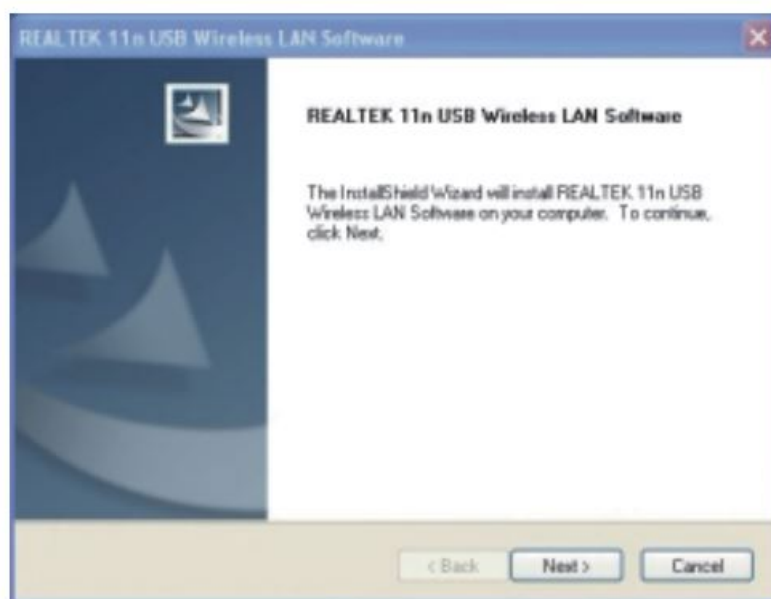
SHENZHEN

## Shenzhen Four Seas Global Link Network Technology CF-813B AC Wireless Network Card



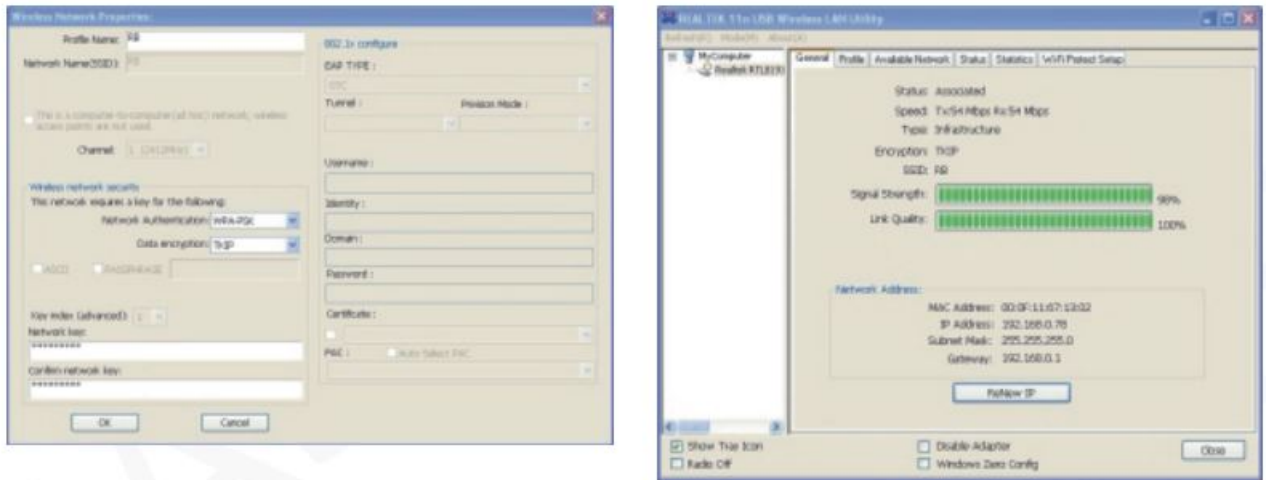
### Install Wireless Adapter Driver

1. Put the CD driver into the computer drive. Open the driver folder and double-click the installation file. Click "Install" to finish the installation.



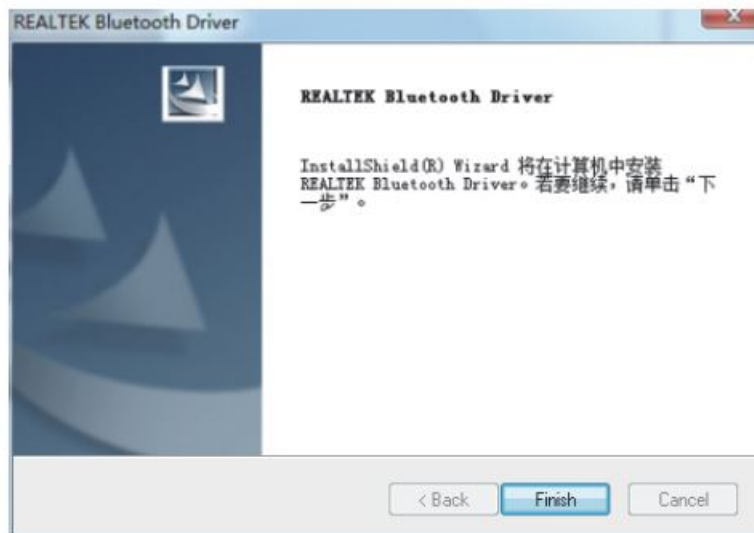
2. After the installation is complete, the client application will run automatically. Double click on the lower right corner of the computer icon. Choose your connection to the (for example WLKJ-WIFIIN), then click on "connection".

Please input the routing network key for the password, click “ok “.

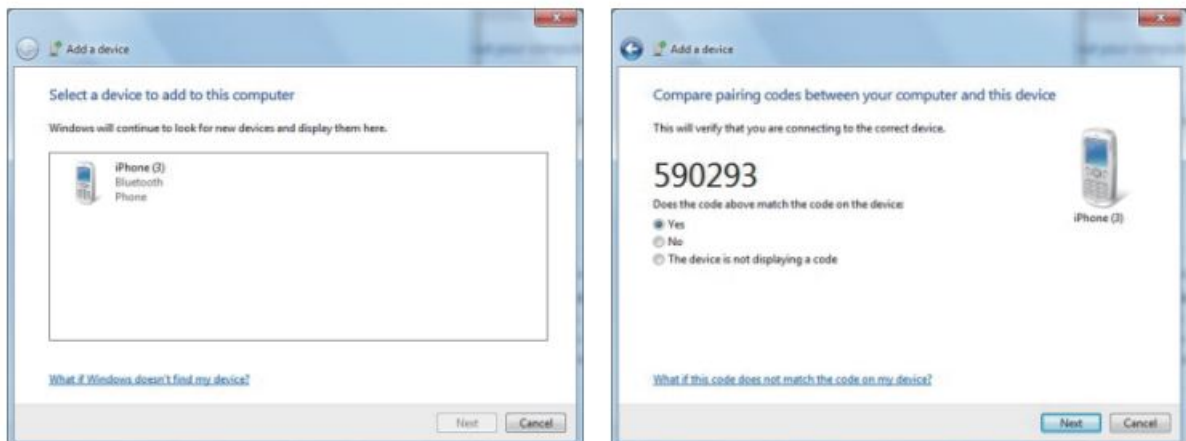


## Bluetooth Adapter Installation

1. Put the CD driver into the computer drive. Open the driver folder and double-click the installation file. Click “Install” to finish the installation. Chose “Yes that agree to restart your computer



2. After the Bluetooth driver finishes installing, the task bar has a Bluetooth signal icon, click on the “add equipment”; and open your phone, PC will search Bluetooth information of the mobile phone. Click-Nexr, mobile will receive the verification code from PC that matches mobile phone with computer, PC click “Next, you could use normally with the Bluetooth function.



**Note:** If you do not get the IP address or can not receive the data packet, that: means your password is wrong. Please re-enter the correct password to obtain IP. If your network is fixed, you need to manually set the IP address.

FCC Statement

This device complies with part 15 of the FCC rules. Operation is subject to the following two conditions: (1) this device may not cause harmful interference, and (2) this device must accept any interference received, including interference that may cause undesired operation.


Changes or modifications not expressly approved by the party responsible for compliance could void the user’s authority to operate the equipment.

**NOTE:** This equipment has been tested and found to comply with the limits for a Class B digital device, pursuant to part 15 of the FCC Rules. These limits are designed to provide reasonable protection against harmful interference in a residential installation. This equipment generates uses and can radiate radio frequency energy and, if not installed and used in accordance with the instructions, may cause harmful interference to radio communications. However, there is no guarantee that interference will not occur in a particular installation. If this equipment does cause harmful interference to radio or television reception, which can be determined by turning the equipment off and on, the user is encouraged to try to correct the interference by one or more of the following measures:

- Reorient or relocate the receiving antenna.
- Increase the separation between the equipment and receiver.
- Connect the equipment into an outlet on a circuit different from that to which the receiver is connected.
- Consult the dealer or an experienced radio/TV technician for help.

The device has been evaluated to meet general RF exposure requirements. The device can be used in portable exposure conditions without restriction.

Documents / Resources

	<p><a href="#">Shenzhen Four Seas Global Link Network Technology CF-813B AC Wireless Network Card</a> [pdf] Installation Guide</p> <p>CF-813B, CF813B, OYR-CF-813B, OYRCF813B, CF-813B AC Wireless Network Card, AC Wireless Network Card</p>
---	---