


Shenzhen Forever Young Technology TH16 Temperature and Humidity Sensor with LCD Screen and Backlight User Manual

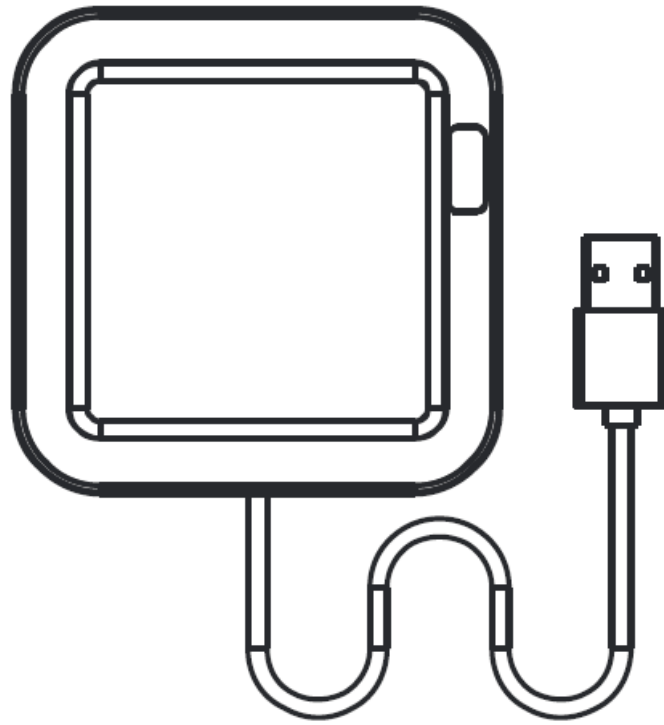
[Home](#) » [Shenzhen Forever Young Technology](#) » Shenzhen Forever Young Technology TH16 Temperature and Humidity Sensor with LCD Screen and Backlight User Manual 

Contents

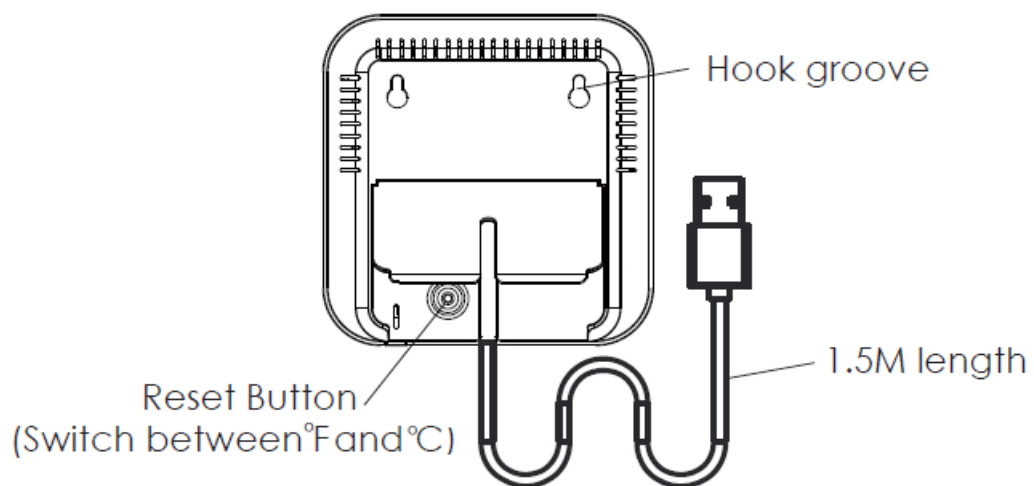
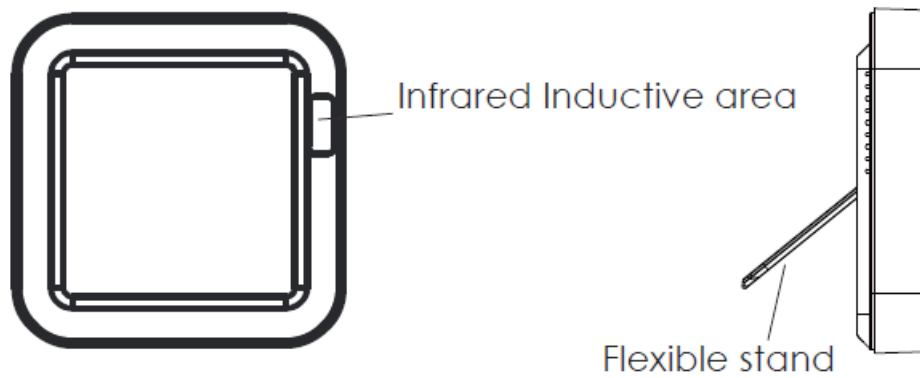
- [1 Shenzhen Forever Young Technology TH16 Temperature and Humidity Sensor with LCD Screen and Backlight](#)
- [2 Product Presentation](#)
- [3 Product Specification](#)
- [4 How to set up](#)
- [5 Functions](#)
- [6 FAQ](#)
- [7 FCC Warning](#)
- [8 Documents / Resources](#)
- [9 Related Posts](#)



Shenzhen Forever Young Technology TH16 Temperature and Humidity Sensor with LCD Screen and Backlight



Product Presentation



Product Specification

- Size: 80*80*16mm
- Micro Input: DC 5V/1A
- LED Indicator: Blue

- Wi-Fi Protocol: 2.4GHz
- Wi-Fi Standard: IEEE 802.11 b/g/n
- Temperature Measure Range: 0 °C~ 60°C
- Temperature Accuracy: +-1°C
- Humidity Measure Range: 0% RH~99% RH
- Humidity Accuracy: +-5% RH
- Cable: 1.5M length

How to set up

1. Use your smartphone to scan QR code, or search “Smart Life” app in Google Play Store or APP Store to download and install.



2. Create an account with your mobile number and authentication code.



3. Connect your mobile to your Wi-Fi router, connect the USB cable to USB power source, click “+” in the upper right corner of homepage or click “Add Device” .



4. Turn on the Bluetooth in mobile:

1. The app will advise you to turn on the bluetooth in your mobile, then you choose the device to add. enter into your Wi-Fi name and Wi-Fi password, it will connect the network automatically.

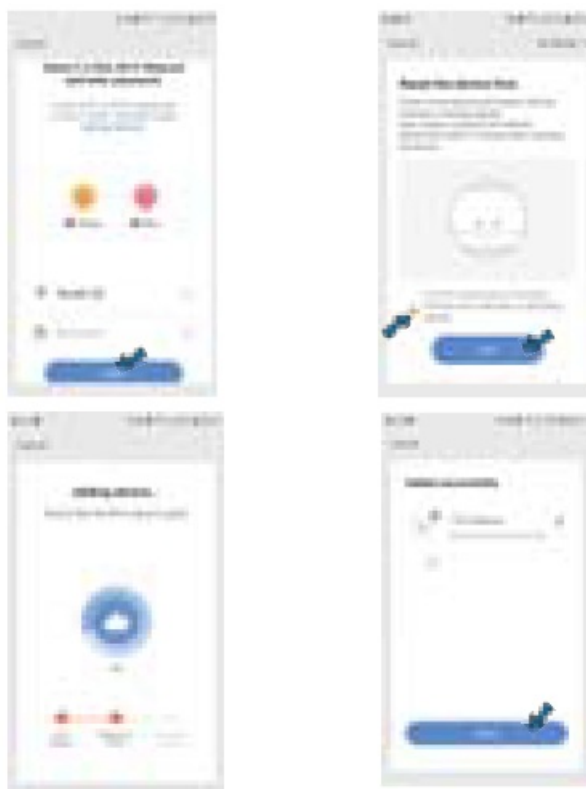




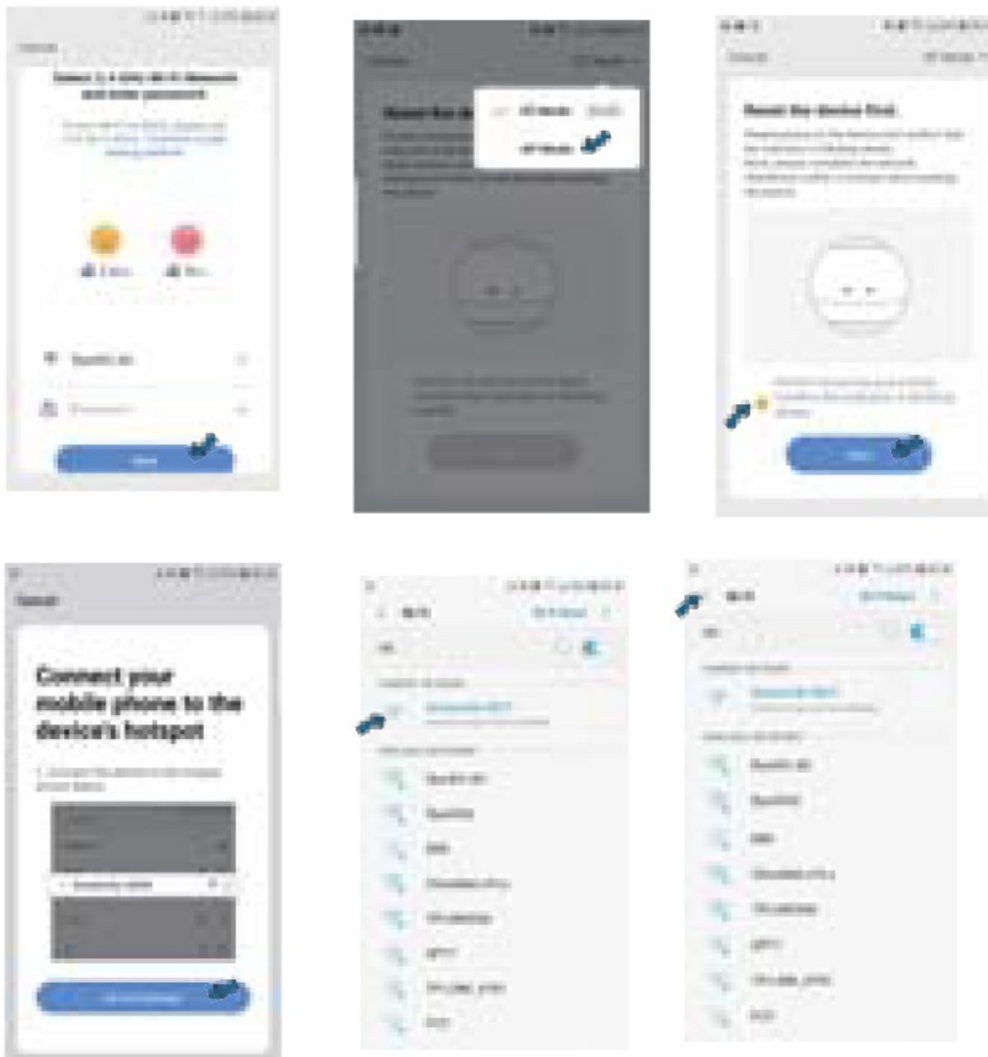
2. Do not turn on the bluetooth:

Select "Temperature and Humidity Sensor(Wi-Fi)" from

"Sensors", enter into the Wi-Fi password, make sure LED indicator is blinking rapidly, if not, please open the stand at the back, hold the reset button for about 5s till LED indicator blink rapidly. it will connect.



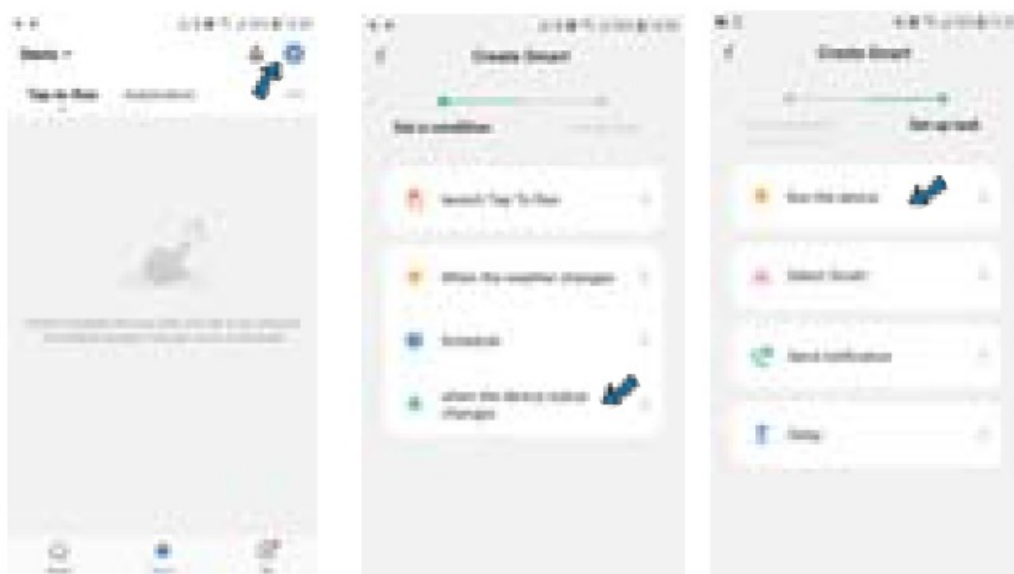
3. If your Wi-Fi router open both 2.4GHz and 5GHz with the same name, enter Wi-Fi password, please select "AP Mode", hold the reset button for about 5 seconds till LED indicator blink slowly, connect your mobile to the device's hotspot: "SmartLife-XXXX", then click to return to App interface, it will connect to Wi-Fi automatically, configuration complete.



Functions

1. Intelligent Linkage

When the ambient environment change, you can execute intelligent linkage. For example, when the room temperature surpass 35°C , the air-conditioner will open automatically or when the humidity lower than 20% RH, the humidifier will spray.



2. Backlight Display

when the object pass through the infrared inductive area less than 5CM away, the backlight will be triggered

and last for about 10s. So you can see the data on the screen clearly at night.

3. Screen Display

About 30 minutes after Wi-Fi configuration, the temperature and humidity is closer to the actual ambient environment. the readings are more accurate. You can real-time monitor the data on-screen directly, and view the records.

4. Temperature Scale Switch

You can switch temperature scale between and °C press of the reset button once. The temperature value will change accordingly after switch, and you can only see on the screen, there is no change in the App.

5. Third-party Voice Control

Works with amazon alexa and google assistant.

FAQ

1. When the temperature and humidity displayed on the screen is more accurate?

About 30 minutes after configuration completed, the temp and humidity displayed on the screen is closer to actual ambient environment, so the readings are more accurate.

2. After temperature scale switch, the temperature value shown on screen and in-app will sync?

the temperature value will change accordingly after switch, and you can only see on the screen, no change in the App.

3. When the backlight will be triggered?

when the object pass through the infrared inductive area less than 5CM away, the backlight will be triggered and last for about 10 seconds.

4. Can we touch the screen with hard or sharp objects or drop it down on the floor?

Please don't use hard or sharp objects to touch the screen, and prevent it from falling on the floor, otherwise, these actions may cause damage to the screen, and influence its usage.

5. Please keep the sensor away from any heat source.

FCC Warning

This device complies with part 15 of the FCC Rules. Operation is subject to the following two conditions: (1) This device may not cause harmful interference, and (2) this device must accept any interference received, including interference that may cause undesired operation.


Any Changes or modifications not expressly approved by the party responsible for compliance could void the user's authority to operate the equipment.

Note: This equipment has been tested and found to comply with the limits for a Class B digital device, pursuant to part 15 of the FCC Rules. These limits are designed to provide reasonable protection against harmful interference in a residential installation. This equipment generates uses and can radiate radio frequency energy and, if not installed and used in accordance with the instructions, may cause harmful interference to radio communications. However, there is no guarantee that interference will not occur in a particular installation. If this equipment does cause harmful interference to radio or television reception, which can be determined by turning the equipment off and on, the user is encouraged to try to correct the interference by one or more of the following measures:

- Reorient or relocate the receiving antenna.
- Increase the separation between the equipment and receiver.
- Connect the equipment into an outlet on a circuit different from that to which the receiver is connected.
- Consult the dealer or an experienced radio/TV technician for help.

The device has been evaluated to meet general RF exposure requirements. The device can be used in portable exposure conditions without restriction

Documents / Resources

	<p>Shenzhen Forever Young Technology TH16 Temperature and Humidity Sensor with LCD Screen and Backlight [pdf] User Manual</p> <p>TH16, 2ANK8-TH16, 2ANK8TH16, TH16 Temperature and Humidity Sensor with LCD Screen and Backlight, Temperature and Humidity Sensor with LCD Screen and Backlight</p>
---	---