



Shenzhen Forever Young Technology S16 Universal IR Remote with Temperature and Humidity Display User Manual

[Home](#) » [Shenzhen Forever Young Technology](#) » Shenzhen Forever Young Technology S16 Universal IR Remote with Temperature and Humidity Display User Manual 

Contents

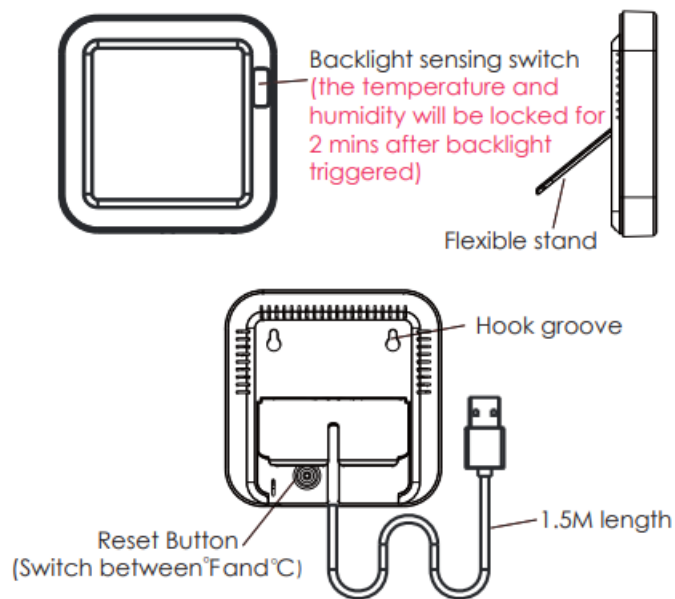
- [1 Shenzhen Forever Young Technology S16 Universal IR Remote with Temperature and Humidity Display](#)
- [2 Product Specification](#)
- [3 Functions](#)
- [4 Intelligent Linkage](#)
- [5 FAQ](#)
- [6 FCC Statement](#)
- [7 Documents / Resources](#)
- [8 Related Posts](#)

SHENZHEN

Shenzhen Forever Young Technology S16 Universal IR Remote with Temperature and Humidity Display



Product Presentation



Product Specification

- **Size:** 80*80*16mm
- **Cable:** 1.5M length
- **Micro Input:** DC 5V/1A
- **LED Indicator:** Blue
- **Infrared Frequency:** 38KHz
- **Infrared Range:** 12 Meters
- **Wi-Fi Protocol:** 2.4GHz
- **Wi-Fi Standard:** IEEE 802.11 b/g/n Temperature Measure Range: 0 °C~ 60°C Temperature Accuracy: +-1°C

- **Humidity Measure Range:** 0% RH~99% RH Humidity Accuracy: $\pm 5\%$ RH

Checklist before using the device:

- Your smartphone has connected to a 2.4GHz Wi-Fi.
- You have input the correct Wi-Fi password.
- Your smartphone must be Android 4.4 + or iOS 8.0 +.
- Your Wi-Fi router is MAC-open.
- If the numbers of devices connected to Wi-Fi router reach the limit, you can try to disable a device to vacate the channel or try with another Wi-Fi router.

How to set up:

1. Use your smartphone to scan QR code, or search “Smart Life” app in Google Play Store or APP Store to download and install.



2. Create an account with your mobile number and authentication code.



3. Connect your mobile to your Wi-Fi router , connect the USB cable to USB power source, click “+” in the upper right corner of homepage or click “Add Device” .



4. Turn on the bluetooth in mobile: The app will advise you to turn on the bluetooth in your mobile, then you choose the device to add. Enter your Wi-Fi name and Wi-Fi password, it will connect to the network automatically.



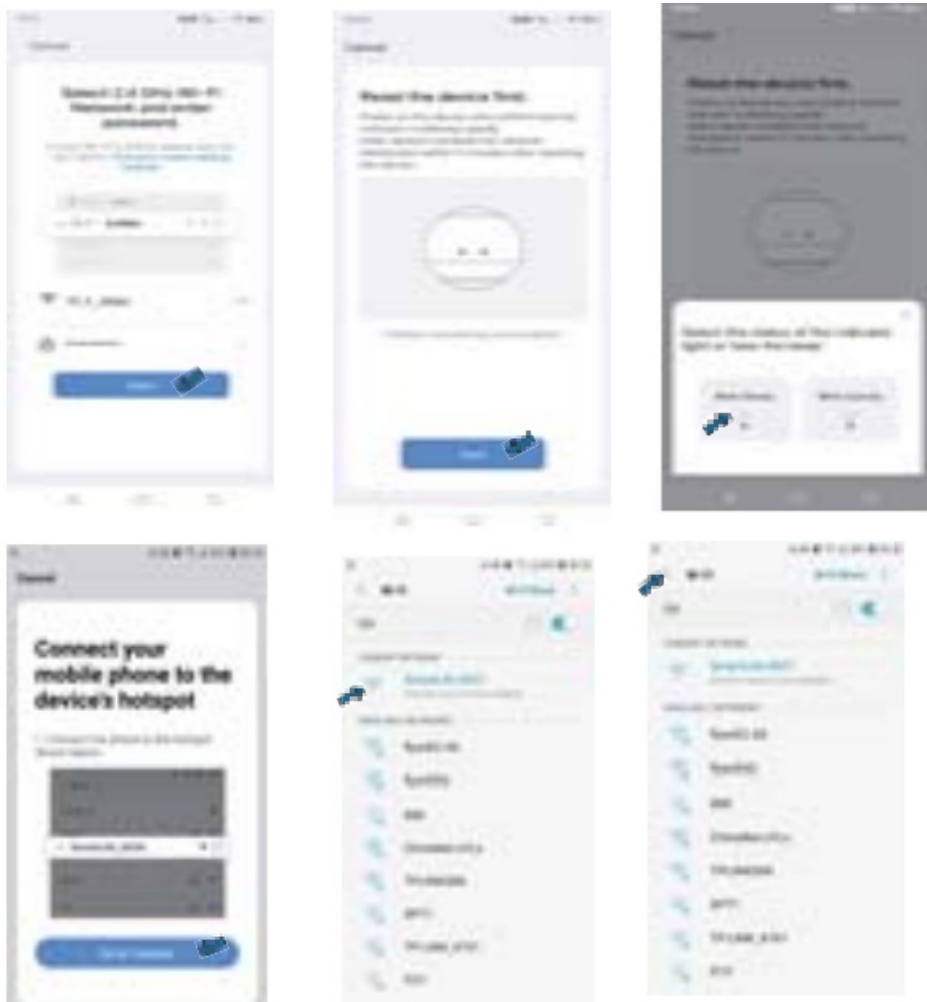


Do not turn on the bluetooth:

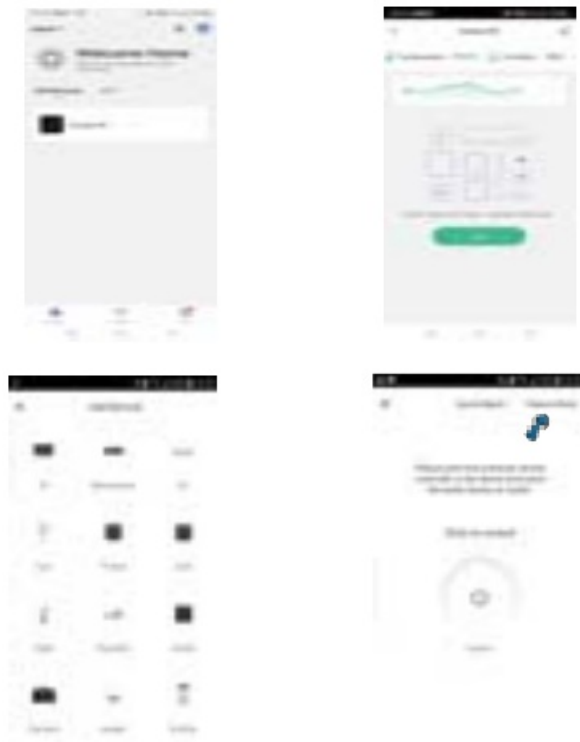
Select "Universal Remote Control (Wi-Fi+BLE)" from "Others", enter the Wi-Fi password, select "Blink Quickly", make sure the LED indicator is blinking rapidly. if not, please hold the reset button for about 5s till indicator blink rapidly. it will connect.



You can also select "Blink Slowly", make sure the LED indicator is blinking slowly, if not, hold the reset button for about 5s till indicator blink slowly. Connect your mobile to the device's hotspot: "SmartLife-XXXX" , click to return to App interface, it will connect to router automatically, configuration completed.



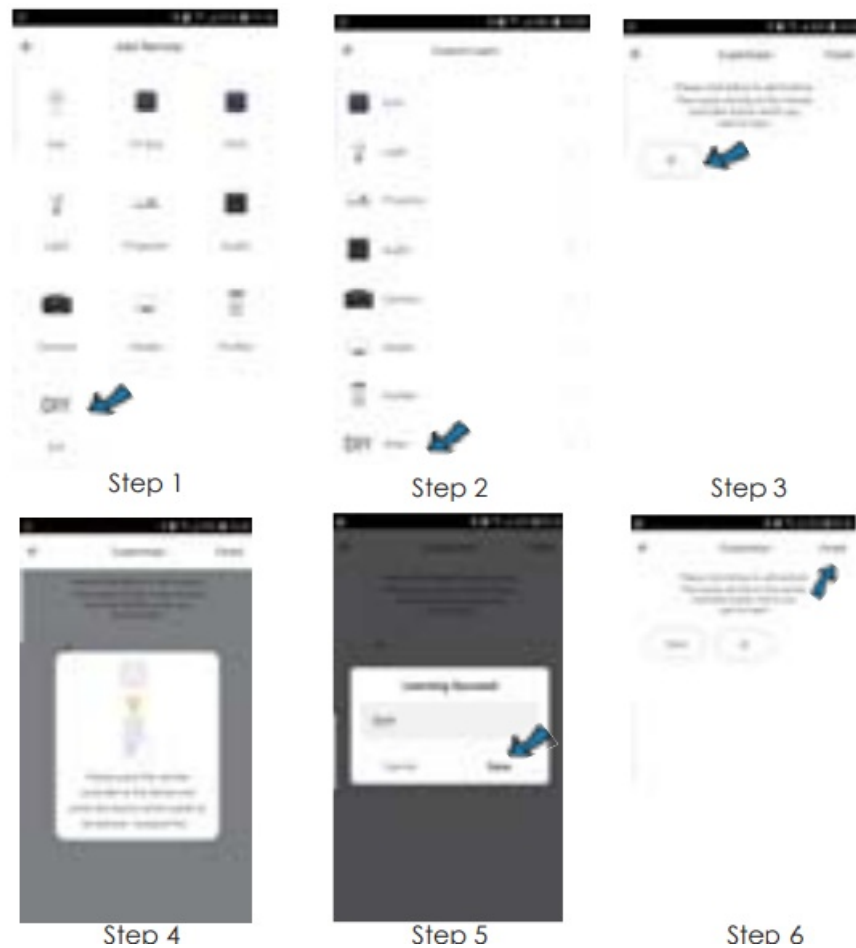
Tap “Smart IR”, then click “Add”, select the device and its brand you need control, please select “Manual Mode” to match the buttons, please match at least 3 buttons to check if the device reacts properly, if yes, then match completed, you can control the device.



After adding the device, if you want to edit the device name, For Android, long press the box, it will pop up “Rename”, click it to edit. For iOS, slide the box towards the left, choose “Rename” to edit.



If you can not find the brand of the device in the brand list, you can choose “DIY” to learn the buttons of other brands’ remote control, so you can also control the device.



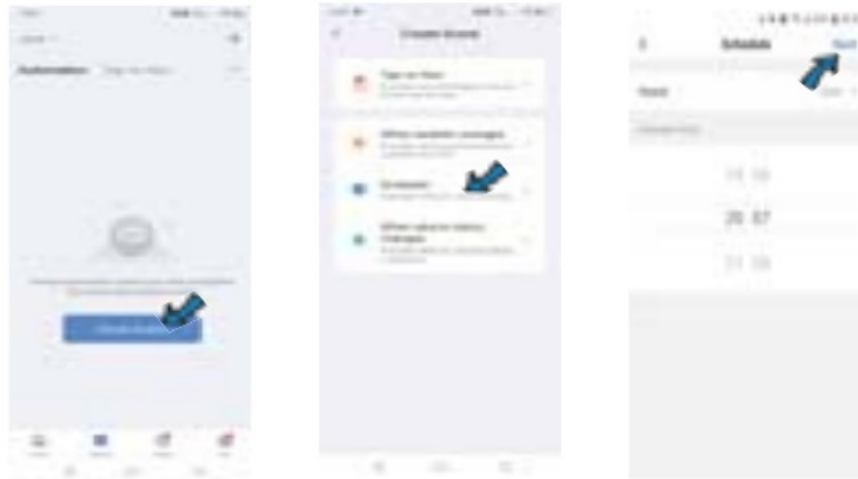
You can click “+” to continue to copy other buttons or click “Finish”.

Notes:

1. It only support 38KHz frequency, if the IR remote unable to receive commands from the IR device, it is likely that the frequency of IR device does not match, unable to study commands.
2. DIY does not support voice control.

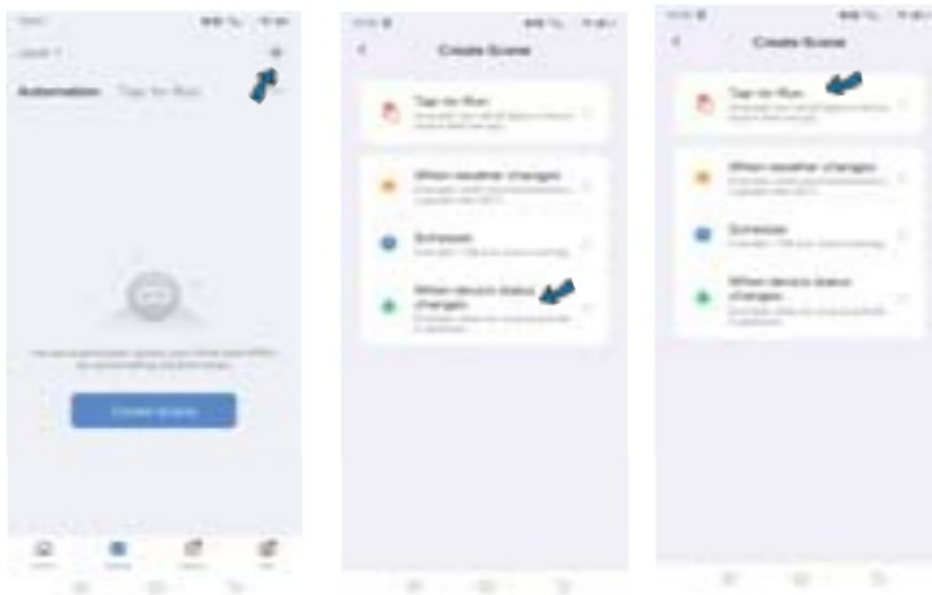
Functions

1. Customize Scenario Create smart scenario for IR devices, click "Scene" page, then click "+" at the upper right corner to set conditions and tasks.
2. **Remote control** With all-in-one integration, you can control added IR devices remotely wherever you are at anytime on the mobile App.
3. Set Schedule Select "Tap to Run" or "Automation" in "Scene" page, tap "+" to select "Schedule" to set power on/off for IR devices.



Intelligent Linkage

When the ambient environment change, you can execute intelligent linkage. For example, when the room temperature surpass 35°C , the air-conditioner will open automatically or when the humidity lower than 20% RH, the humidifier will spray.



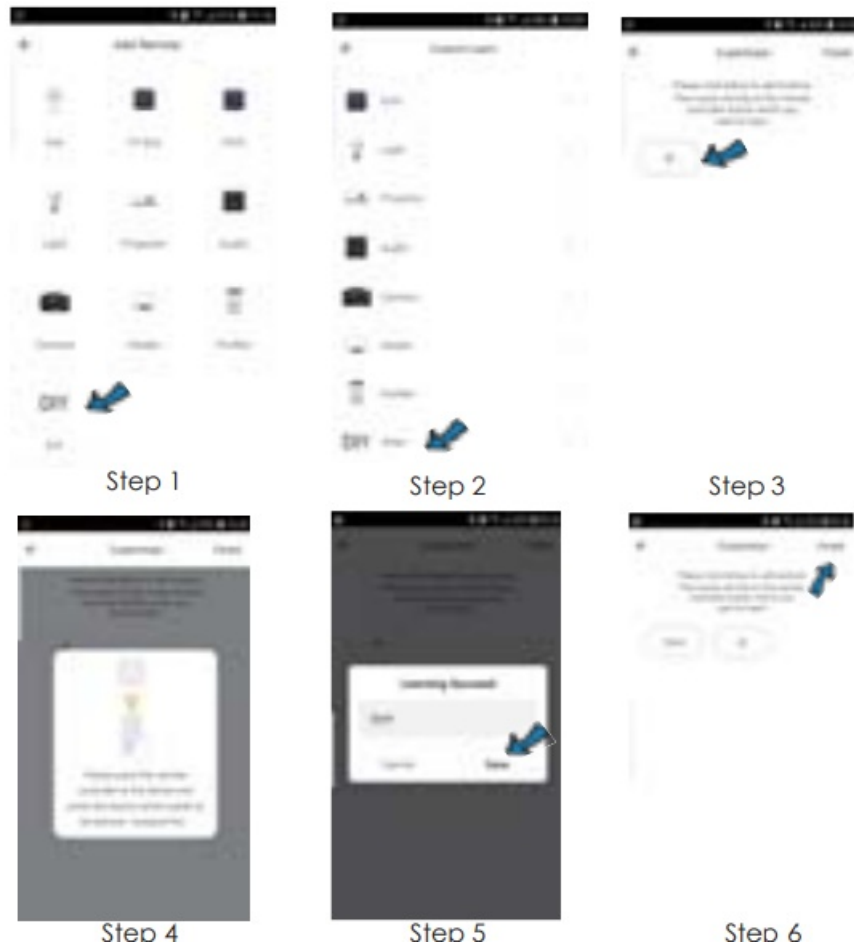
After adding the device, if you want to edit the device name, For Android, long press the box, it will pop up "Rename", click it to edit. For iOS, slide the box towards the left, choose "Rename" to edit.



Android

iOS

If you can not find the brand of the device in the brand list, you can choose “DIY” to learn the buttons of other brands’ remote control, so you can also control the device.



Share devices

You can share your added devices with family members, so they can also control the devices.



Third-party Voice Control

Works with amazon alexa and google assistant.

Backlight Display

when the object pass through the backlight sensing switch less than 5CM away, the backlight will be triggered, and the temperature and humidity will be locked for 2 mins, then restore to real-time update.

Screen Display

About 30 minutes after Wi-Fi configuration, the temperature and humidity is closer to the actual ambient environment, the readings are more accurate. You can real-time monitor the data on screen directly, and view the records.

Temperature Unit Switch

You can switch temperature unit between F and °C press of the reset button once. The temperature value will change accordingly after switch, and you can only see on the screen, there is no change in the App.

FAQ

1. When the temperature and humidity displayed on the screen is more accurate?

About 30 minutes after configuration completed, the temp and humidity displayed on the screen is closer to actual ambient environment, so the readings are more accurate.

2. After temperature scale switch, the temperature value shown on screen and in app will sync?

The temperature value will change accordingly after switch, and you can only see on the screen, no change in the App.

3. When the backlight will be triggered ?

When the object pass through the backlight sensing switch less than 5CM away, the backlight will be triggered and last for about 10 seconds.

1. When the backlight is off, the screen will display real-time temperature and humidity. if the ambient temperature change 0.3°C, or the humidity change >3%, the screen will immediately synchronize the temperature and humidity with the APP. Otherwise, it will take 1 min to synchronize the temperature and humidity with the APP.
2. When the backlight is triggered, the temp and humidity on the screen will be locked for 2 mins, if the backlight is triggered again within 2 mins, the temperature and humidity on the screen will be locked for no more than 15

mins, the temp and humidity display will return to normal after unlocking.

3. Can we touch the screen with hard or sharp objects or drop it down on the floor ? Please don't use hard or sharp objects to touch the screen, and prevent it from falling on the floor, otherwise, these actions may cause damage to the screen, and influence its usage.
4. Please keep the IR remote away from any heat source.

FCC Statement

This equipment has been tested and found to comply with the limits for a Class B digital device, pursuant to part 15 of the FCC rules. These limits are designed to provide reasonable protection against harmful interference in a residential installation. This equipment generates, uses and can radiate radio frequency energy and, if not installed and used in accordance with the instructions, may cause harmful interference to radio communications. However, there is no guarantee that interference will not occur in a particular installation. If this equipment does cause harmful interference to radio or television reception, which can be determined by turning the equipment off and on, the user is encouraged to try to correct the interference by one or more of the following measures:

- Reorient or relocate the receiving antenna.
- Increase the separation between the equipment and receiver.
- Connect the equipment into an outlet on a circuit different from that to which the receiver is connected.
- Consult the dealer or an experienced radio/TV technician for help.


To assure continued compliance, any changes or modifications not expressly approved by the party. Responsible for compliance could void the user's authority to operate this equipment. (Example- use only shielded interface cables when connecting to computer or peripheral devices). This equipment complies with Part 15 of the FCC Rules. Operation is subject to the following two conditions

1. This device may not cause harmful interference, and
2. This device must accept any interference received, including interference that may cause undesired operation.

FCC Radiation Exposure Statement:

The equipment complies with FCC Radiation exposure limits set forth for uncontrolled environment. This equipment should be installed and operated with minimum distance 20cm between the radiator and your body.

Documents / Resources

	<p>Shenzhen Forever Young Technology S16 Universal IR Remote with Temperature and Humidity Display [pdf] User Manual</p> <p>S16, 2A8TU-S16, 2A8TUS16, S16 Universal IR Remote with Temperature and Humidity Display, S16, Universal IR Remote with Temperature and Humidity Display, Universal IR Remote, IR Remote, Remote</p>
---	---