



Shenzhen Five Six One Network Technology HC-Q1 Wireless Bluetooth Speaker User Manual

[Home](#) » [Shenzhen Five Six One Network Technology](#) » Shenzhen Five Six One Network Technology HC-Q1 Wireless Bluetooth Speaker User Manual 

SHENZHEN

Wireless charging Bluetooth speaker manual
mobile: HC-Q1

Contents

- [1 Charge](#)
- [2 Key operation](#)
- [3 Bluetooth connectivity](#)
- [4 LED light](#)
- [5 Documents / Resources](#)
- [6 Related Posts](#)

Charge

Plug in 5V to charge the machine. The LED is always on when charging.

Key operation

1. Long press: next song Short press: volume increase



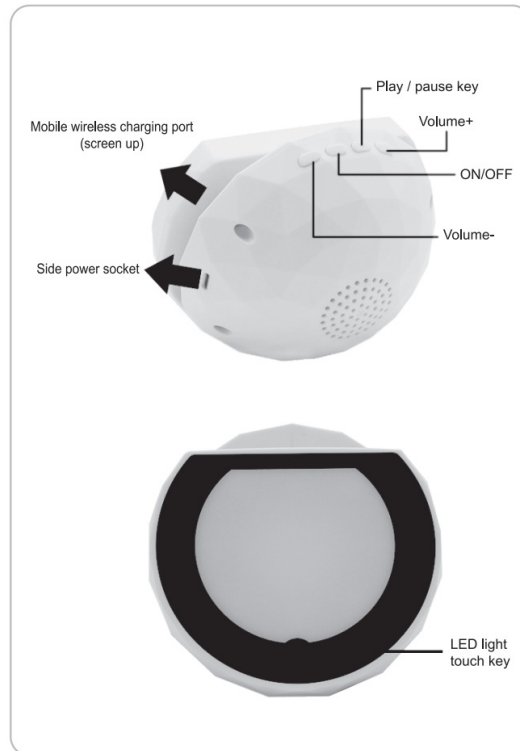
2. Long press: last song Short press: volume down



3. Short press: play Press again: pause



4. Long press: power on Press and hold again: turn off



Bluetooth connectivity

Turn on and enter Bluetooth mode automatically. Turn on Bluetooth to search he-q1 and click Connect

LED light

Touch the LED light switch, the first dark light, the second normal light, and the third light
It is recommended to use a 2A charging cable.

FCC STATEMENT :

This device complies with Part 15 of the FCC Rules. Operation is subject to the following two conditions:

1. This device may not cause harmful interference, and
2. This device must accept any interference received, including interference that may cause undesired operation.

Warning: Changes or modifications not expressly approved by the party responsible for compliance could void the user's authority to operate the equipment.

NOTE: This equipment has been tested and found to comply with the limits for a Class B digital device, pursuant

to Part 15 of the FCC Rules. These limits are designed to provide reasonable protection against harmful interference in a residential installation. This equipment generates uses and can radiate radio frequency energy and, if not installed and used in accordance with the instructions, may cause harmful interference to radio communications. However, there is no guarantee that interference will not occur in a particular installation. If this equipment does cause harmful interference to radio or television reception, which can be determined by turning the equipment off and on, the user is encouraged to try to correct the interference by one or more of the following measures:

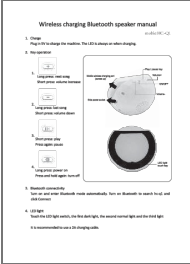
- Reorient or relocate the receiving antenna.
- Increase the separation between the equipment and receiver.
- Connect the equipment into an outlet on a circuit different from that to which the receiver is connected.
- Consult the dealer or an experienced radio/TV technician for help.

FCC Radiation Exposure Statement:

This equipment complies with FCC radiation exposure limits set forth for an uncontrolled environment. This equipment should be installed and operated with a minimum distance of 20cm between the radiator & your body.

SHENZHEN

Documents / Resources

	<p>Shenzhen Five Six One Network Technology HC-Q1 Wireless Bluetooth Speaker [pdf] Use r Manual HCQ1, 2AW6D-HCQ1, 2AW6DHCCQ1, HC-Q1 Wireless Bluetooth Speaker, HC-Q1, Wireless Bl uetooth Speaker</p>
--	--