



Shenzhen Fine Offset Electronics Co GW2000 Weather Station User Guide

[Home](#) » [Shenzhen Fine Offset Electronics Co](#) » Shenzhen Fine Offset Electronics Co GW2000 Weather Station User Guide 



SHENZHEN

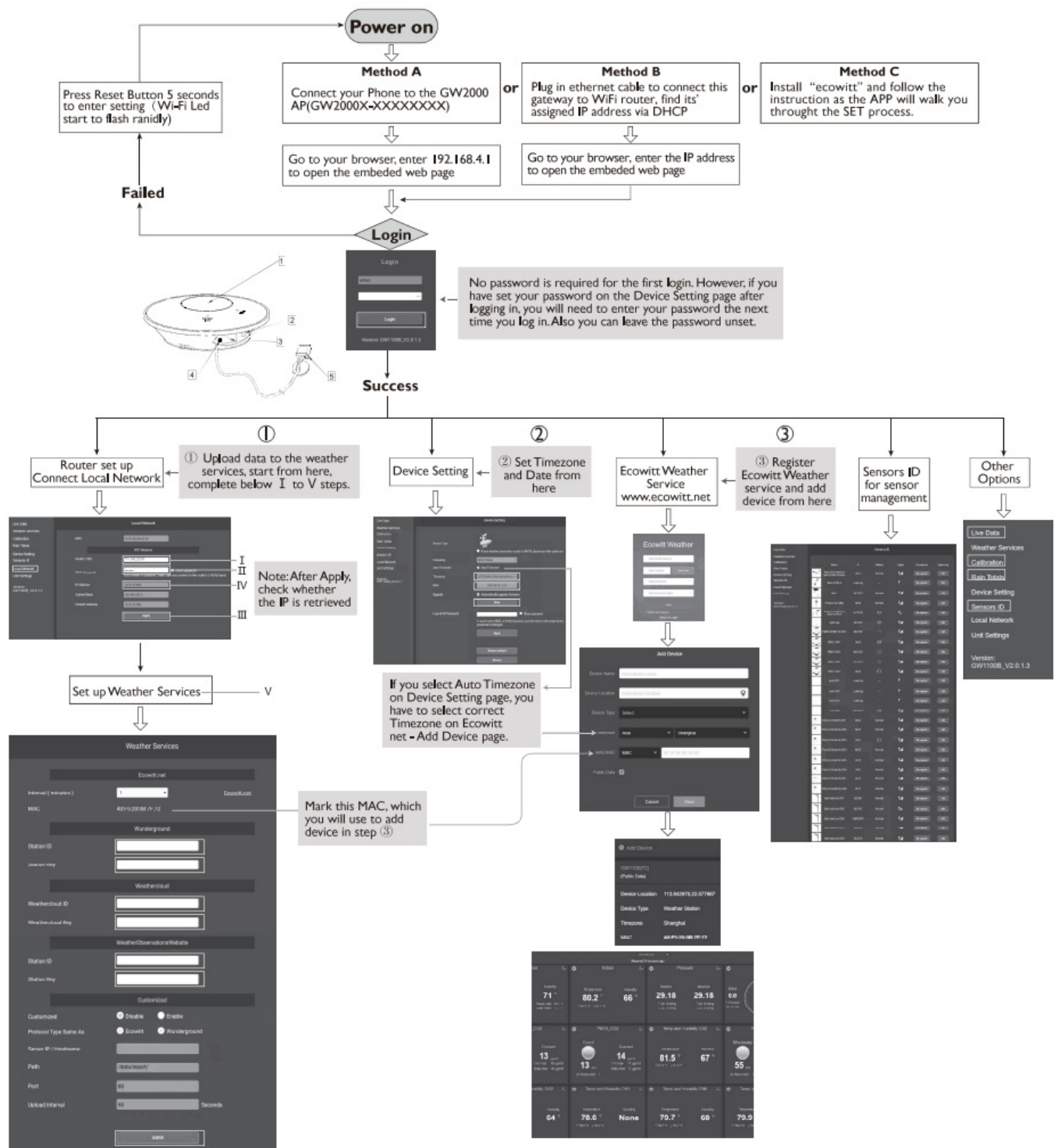
Fine Offset Electronics Co GW2000 Weather Station
User Guide

Contents

- [1 GW2000 Weather Station](#)
- [2 Specification](#)
- [3 FCC WARNING](#)
- [4 Documents / Resources](#)
- [5 Related Posts](#)

GW2000 Weather Station

5	Temp. & Humidity Sensor
4	Network LED
3	Ethernet socket
2	DC Socket
1	Reset button
No	Description



Please choose method A,B or C to start the setup. we recommend:

1. Method C to be used first
2. Method B to be used if Method C doesn't work for you.
3. Method A to be used if you don't have an ethernet port but have a mobile phone only.

Attention:

Our product is continuously changing and improving, particularly online services and associated applications. To download the latest manual and additional help, please contact us at support@ecowitt.com or support.eu@ecowitt.net (EU/UK).

Manufacturer:

ShenZhenShi OuSaiTeDianZi YouXianGongSi Add: C Dong 4 Ceng A. Minzhujijugonggyecheng AQu. Xihuanlu. Shajingjiedao. Baoanqu Shenthen. Guangdong 518101. CN E-mail: support@ecowitt.com support.eu@ecowitt.net (EU/UK)

UK representative

UK AR

HUA TENG LIMITED 3 Glass Street, Hanley, Stoke On Trent, ST1 2ET United Kingdom

EC representative

EC REP

AC WORKS CONSULTING Srl Via Vilfredo Pareto 125,47521 Casena(FC),ITALY



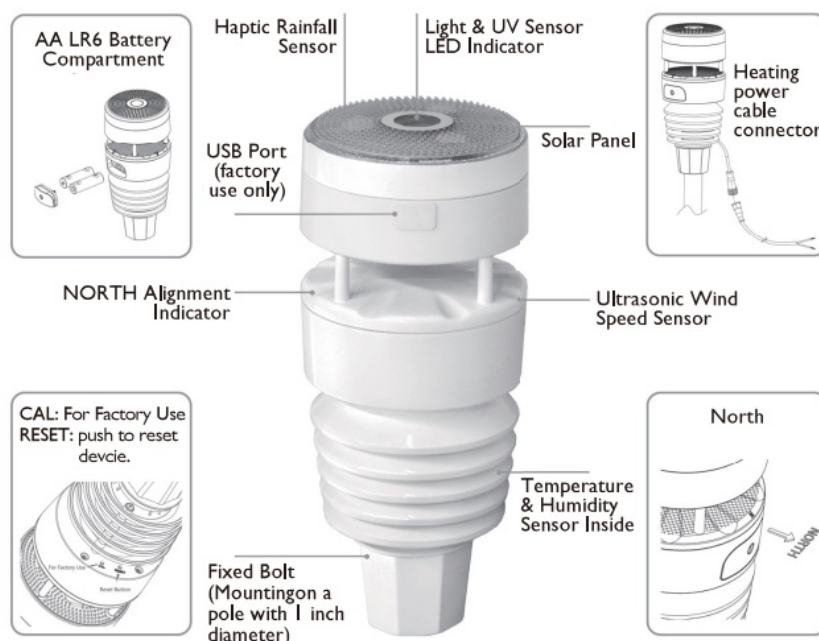
<https://www.ecowitt.com/support/download/178>

- Please scan the QR code to read English manual and keep it for future reference

Instruction manuals

<https://www.ecowitt.com/support/download/178>

Compact and Built to last



Feature

All in one

Weather Station

Temperattre. humidity. wind direction and speed. light and UV levels



Dud-Power Supply

Solar Power Autonomy & Backup Battery



Supports a bundle of sensors

Those already developed sensors or to be developed future sensors are all supported.



Haptic Rainfall Sensor

More accuracy with Anti-vibration design



Light compact yet robust IPXS

install it outdoors and let it do its weather station magic



Near – Zero maintenance

All-in-one weather station with no moving parts



Get Live data Maundy

View live data on Ecowitt app or at EcoWitt.net



Easy Integration to r patty

With its unique data exdiange protocol, it can be integrated easily with r party systems.



Get alert emails

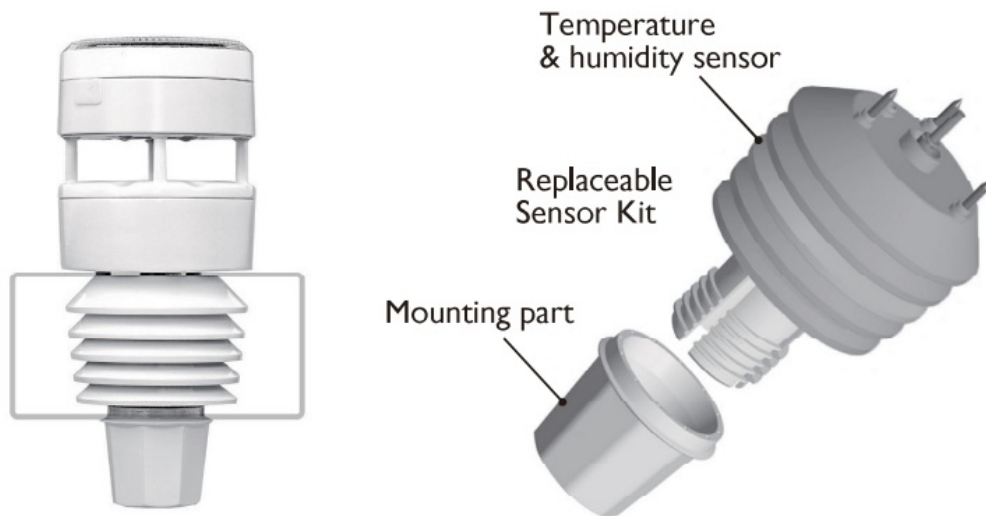
on your own defined alert condition, mails an be triggered to notify you the alert



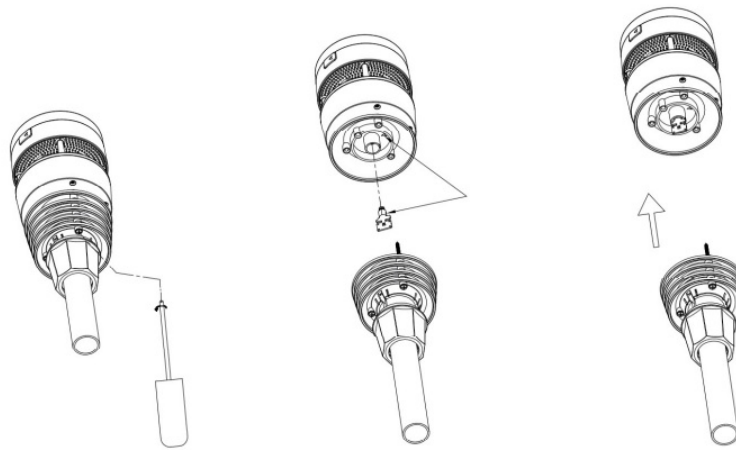
Easy Integration to 3 party

Data on be picked up&received through Hub GW2000 in 150m range

Replaceable Temperature & Humidity Sensor



While compact the entire structure of WittBoy is built to be robust and designed to withstand the test of time. The Temperature and Humidity Sensor Kit can be replaced whenever required.



1. Use screwdriver to untight the screws of the sensor.

2. unplug the old sensor

3. Replace the old Temp & Humidity sensor with new one

Paired with W-Fi Hub GW2000



Your private weather station will pick up data of temperature, humidity, wind direction and speed, light and UV levels, as well as rainfall, and report it to you through its APP or the ecowitt.net website.



We Support



or your own defined server



Specification

Measurement specification

Measurement	Range	Accuracy	Resolution
Wind speed	0-40m/s	<10m/s,+/-0.5m/s 10m/s,+/-5%	0.1 M/S
Wind direction	0-359°	<4m/s,TBA 10m/s,±10°	1°
Temperature	-40-60°C	±0.5°C	0.1°C
Humidity	1—99%	±5%	1%
Light	0-300Klux	± 15%	1 OKlux
UVI	H15	±2	1
Rain	0-9999	±10%	0.1 mm

Power consumption

Anemometer sensor (main)	Anemometer sensor (backup)
Solar panel (built-in) 6.5V/4mA(Integrated)	2 x AA 1.5V battery (not included,recommended to use Lithium none rechargeable batteries)

FCC WARNING

This device complies with part 15 of the FCC Rules. Operation is subject to the following two conditions: (1) this device may not cause harmful interference, and (2) this device must accept any interference received, including interference that may cause undesired operation. Any changes or modifications not expressly approved by the party responsible for compliance could void the user's authority to operate the equipment.

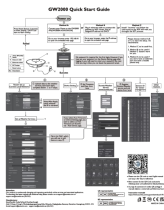
NOTE: This equipment has been tested and found to comply with the limits for a Class B digital device, pursuant to Part 15 of the FCC Rules. These limits are designed to provide reasonable protection against harmful

interference in a residential installation. This equipment generates, uses and can radiate radio frequency energy and, if not installed and used in accordance with the instructions, may cause harmful interference to radio communications. However, there is no guarantee that interference will not occur in a particular installation. If this equipment does cause harmful interference to radio or television reception, which can be determined by turning the equipment off and on, the user is encouraged to try to correct the interference by one or more of the following measures:

- Reorient or relocate the receiving antenna.
- Increase the separation between the equipment and receiver.
- Connect the equipment into an outlet on a circuit different from that to which the receiver is connected.
- Consult the dealer or an experienced radio/TV technician for help. To maintain compliance with FCC's RF Exposure guidelines, This equipment should be installed and operated with minimum distance between 20cm the radiator your body: Use only the supplied antenna.



Documents / Resources

	Shenzhen Fine Offset Electronics Co GW2000 Weather Station [pdf] User Guide GW2000 Weather Station, GW2000, Weather Station, Station
---	---