



Shenzhen Edup Electronics Technology EPEP9655 Bluetooth PCI-E WiFi Card User Manual

[Home](#) » [Shenzhen Edup Electronics Technology](#) » Shenzhen Edup Electronics Technology EPEP9655 Bluetooth PCI-E WiFi Card User Manual

Shenzhen

Bluetooth PCI-E WiFi Card USER MANUAL

support wint 10, wint 11 64 bit
After the installation is complete, restart the computer.

Contents [[hide](#)]

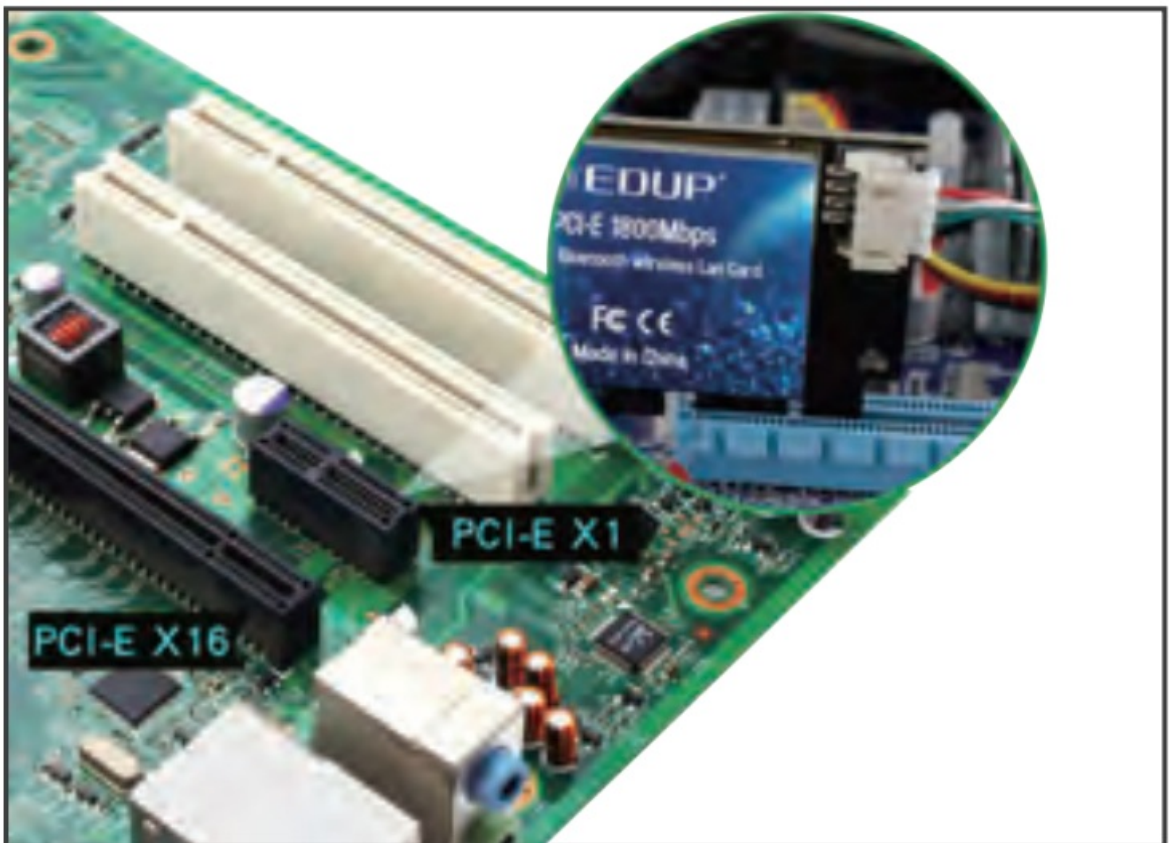
- [1 Hardware Installation](#)
- [2 How to install the PCI-E card driver?](#)
- [3 How to connect the PCI-E card to Wi-Fi?](#)
- [4 How to install the Bluetooth driver?](#)
- [5 How to connect the Bluetooth Earphones with the adapter?](#)
- [6 Documents / Resources](#)
 - [6.1 References](#)
- [7 Related Posts](#)

Hardware Installation

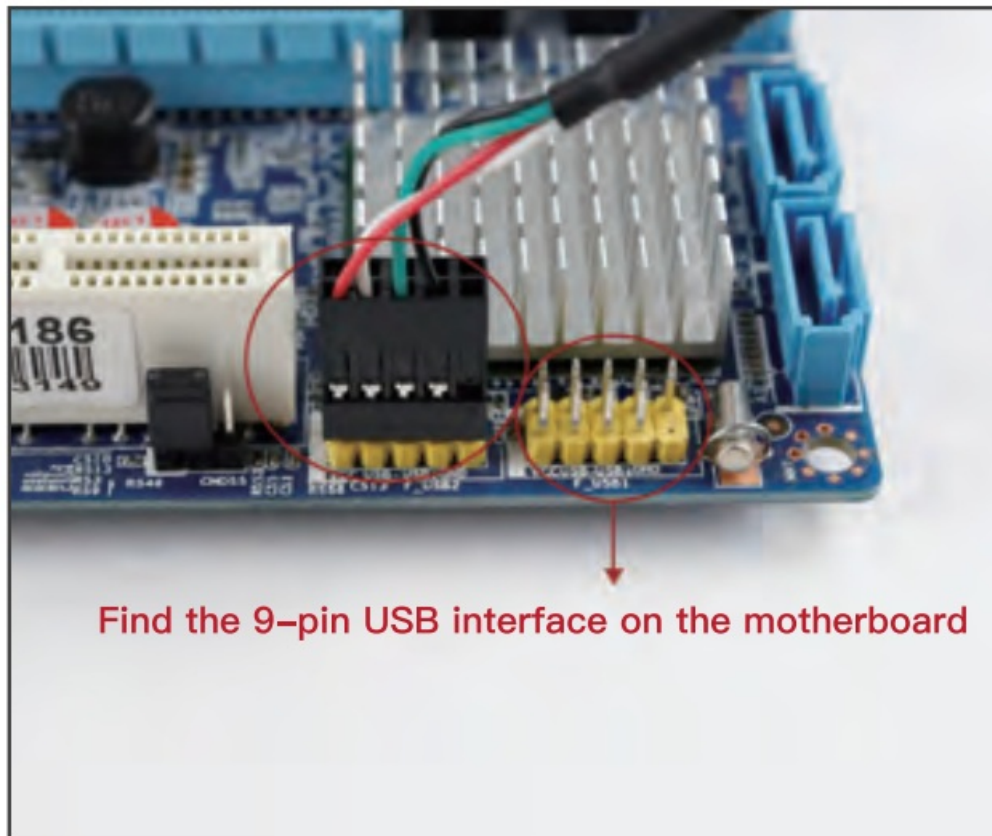
1. Open the side cover of the chassis and remove the chassis tailgate screws of the PCI-E card slot.



2. Insert the product into the corresponding card slot tightly, and either PCI-E/X1M4/X8R16 slots are available.

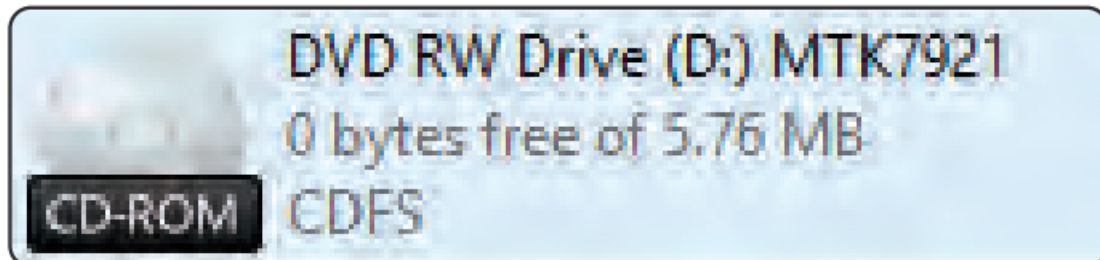


3. Find the 9-pin USB interface on the motherboard, insert the external wiring of the PCI-E card into the USB interface of the motherboard, and install the screws to secure the bracket.

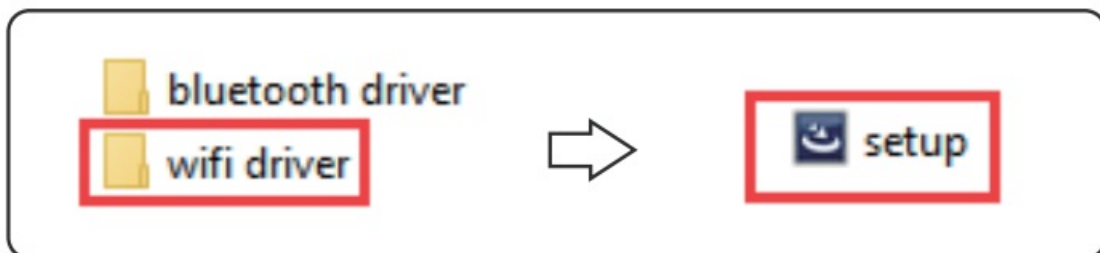


How to install the PCI-E card driver?

1. Right-click on the CD-ROM to open the driver files.



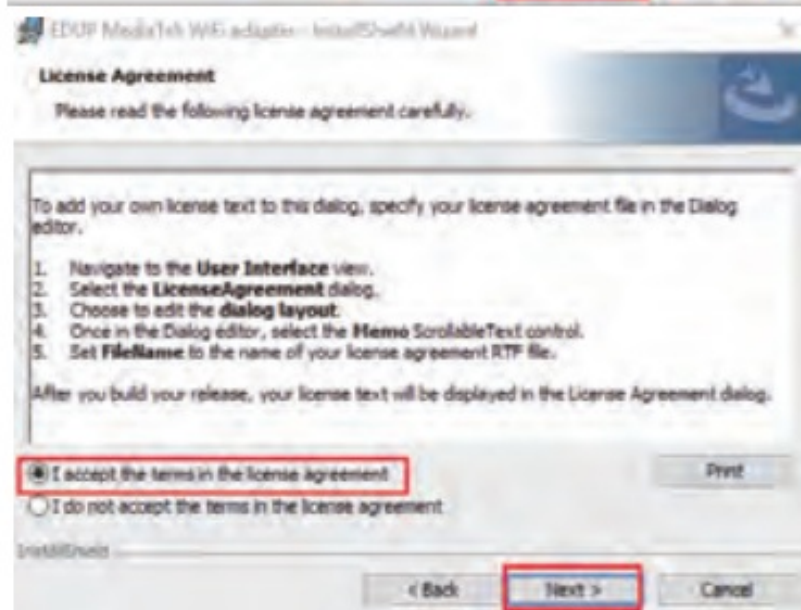
2. Choose "WiFi driver", click "setup", show as below picture:

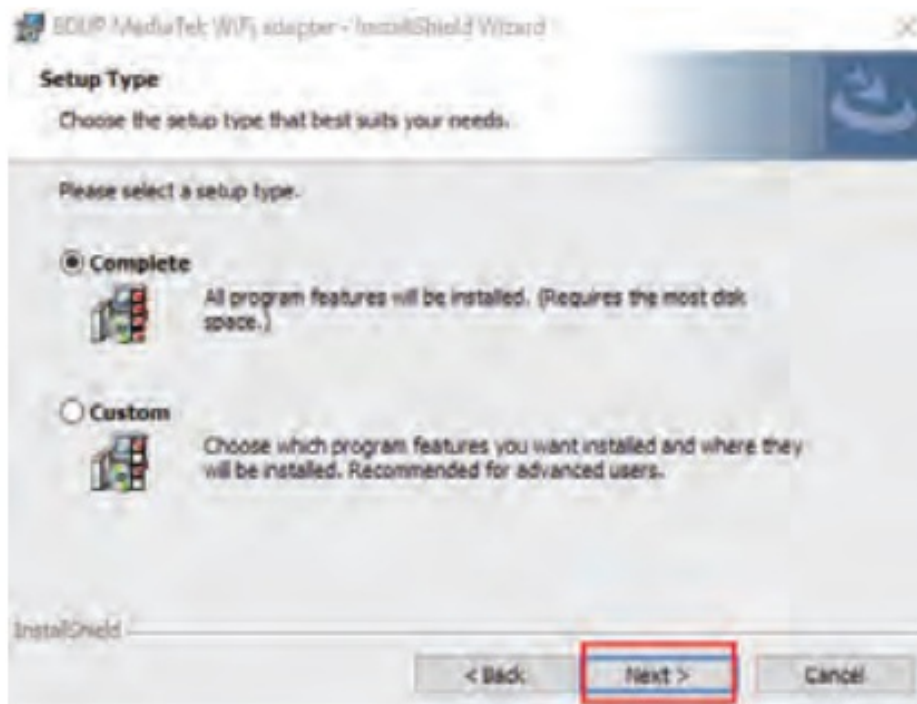


3. Ready to install, show as below picture:

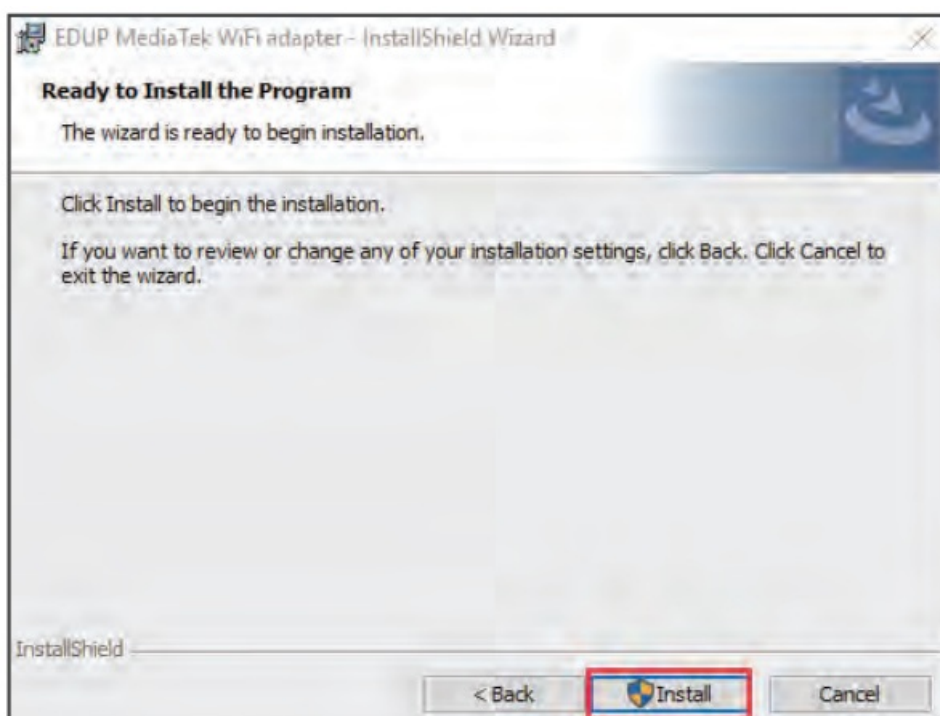


4. Click "Next", then choose " I accept the terms in the license agreement", Click " Next " :

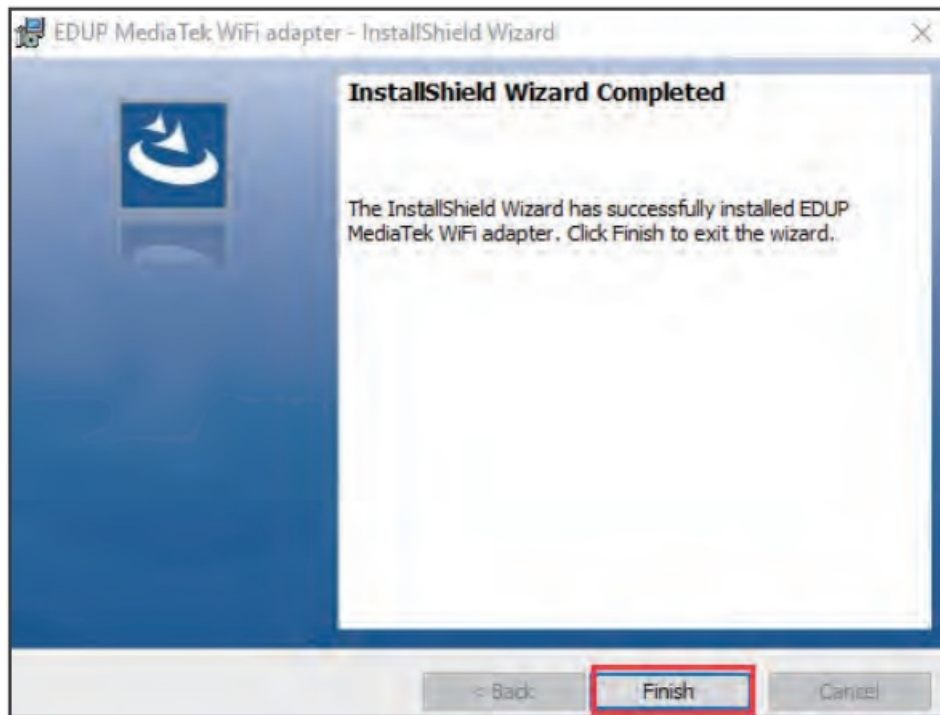






5. Click Install °, install driver program:

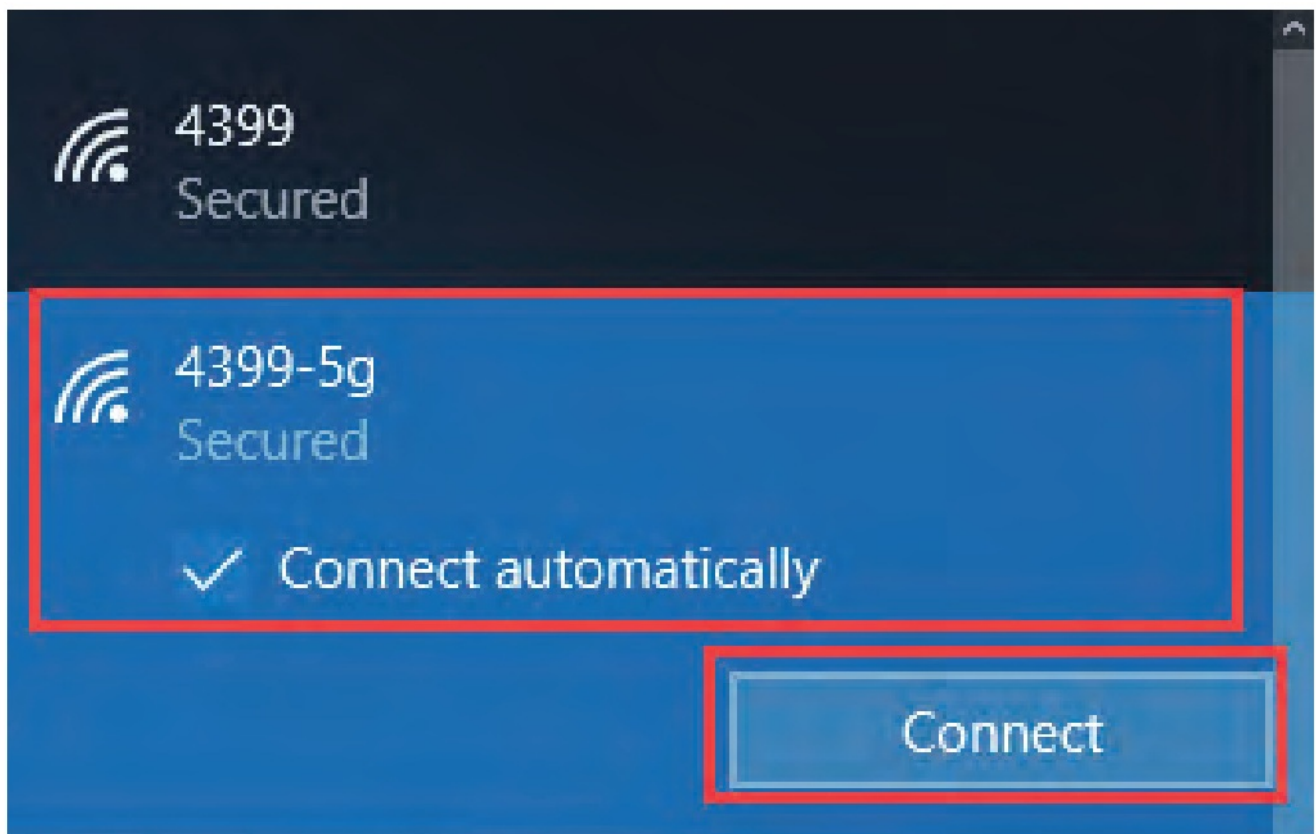


6. After installed, click " Finish " :

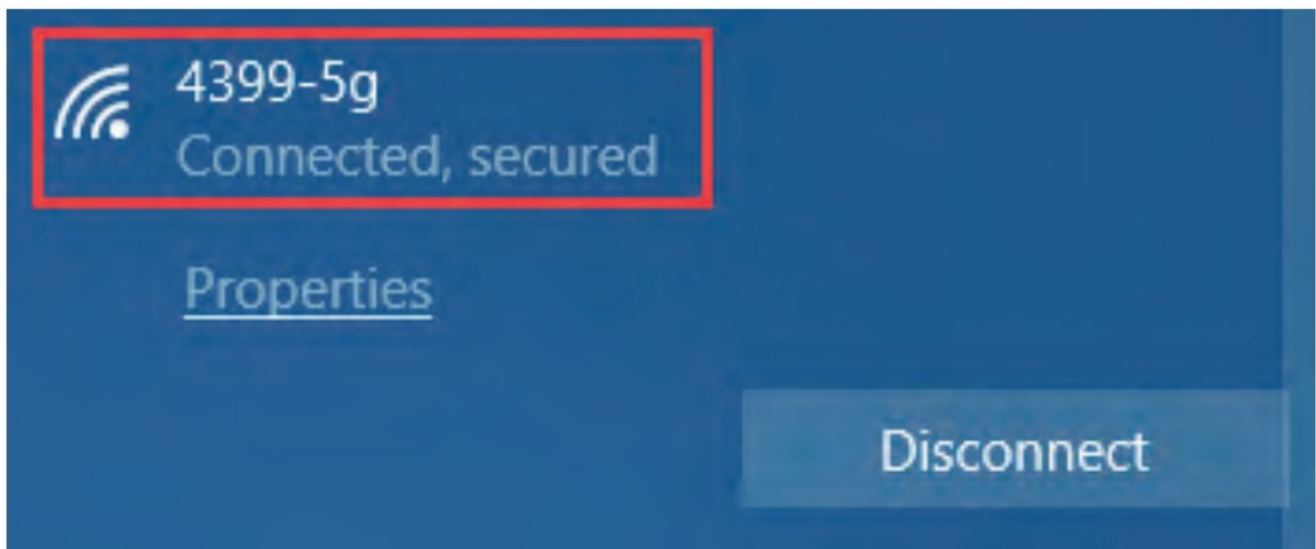
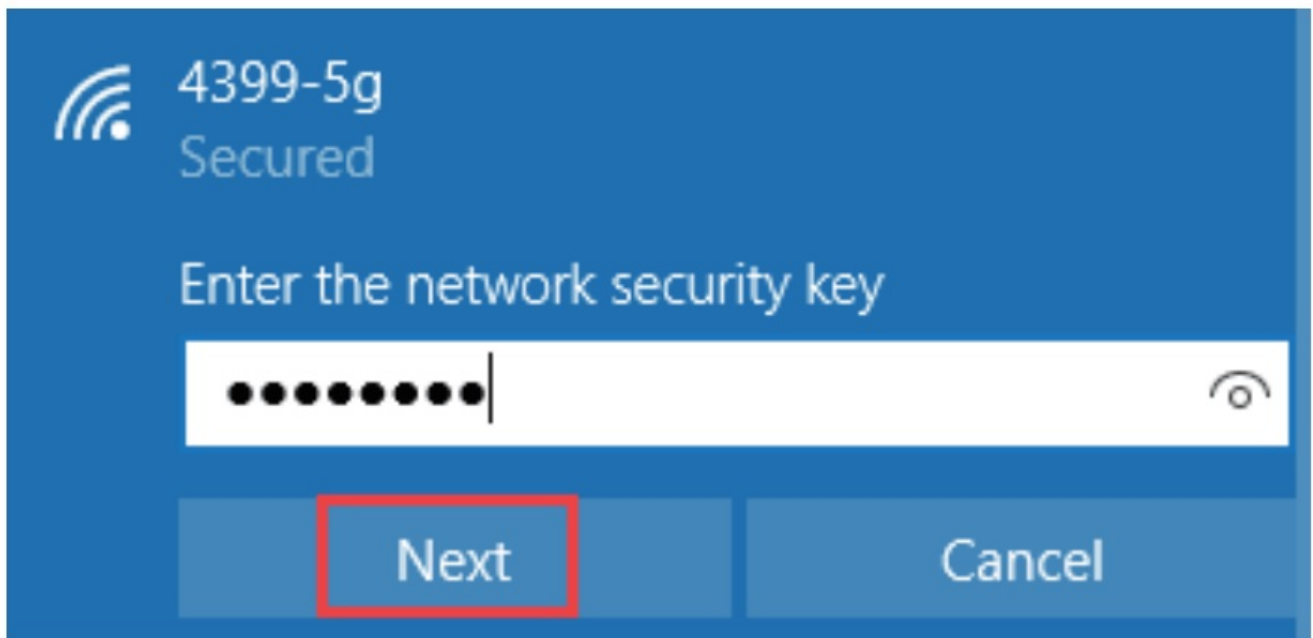


How to connect the PCI-E card to Wi-Fi?

1. Open the Internet icon  or  at the lower right corner of the computer.
2. Searching and connecting the Wi-Fi you preferred on the detected Wi-Fi list.
3. Enter the Wi-Fi password to connect.

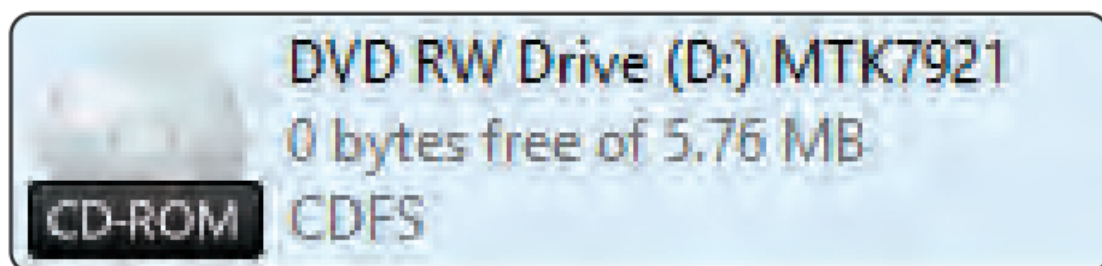


4. Finally, you are connected to the Wi-Fi.



How to install the Bluetooth driver?

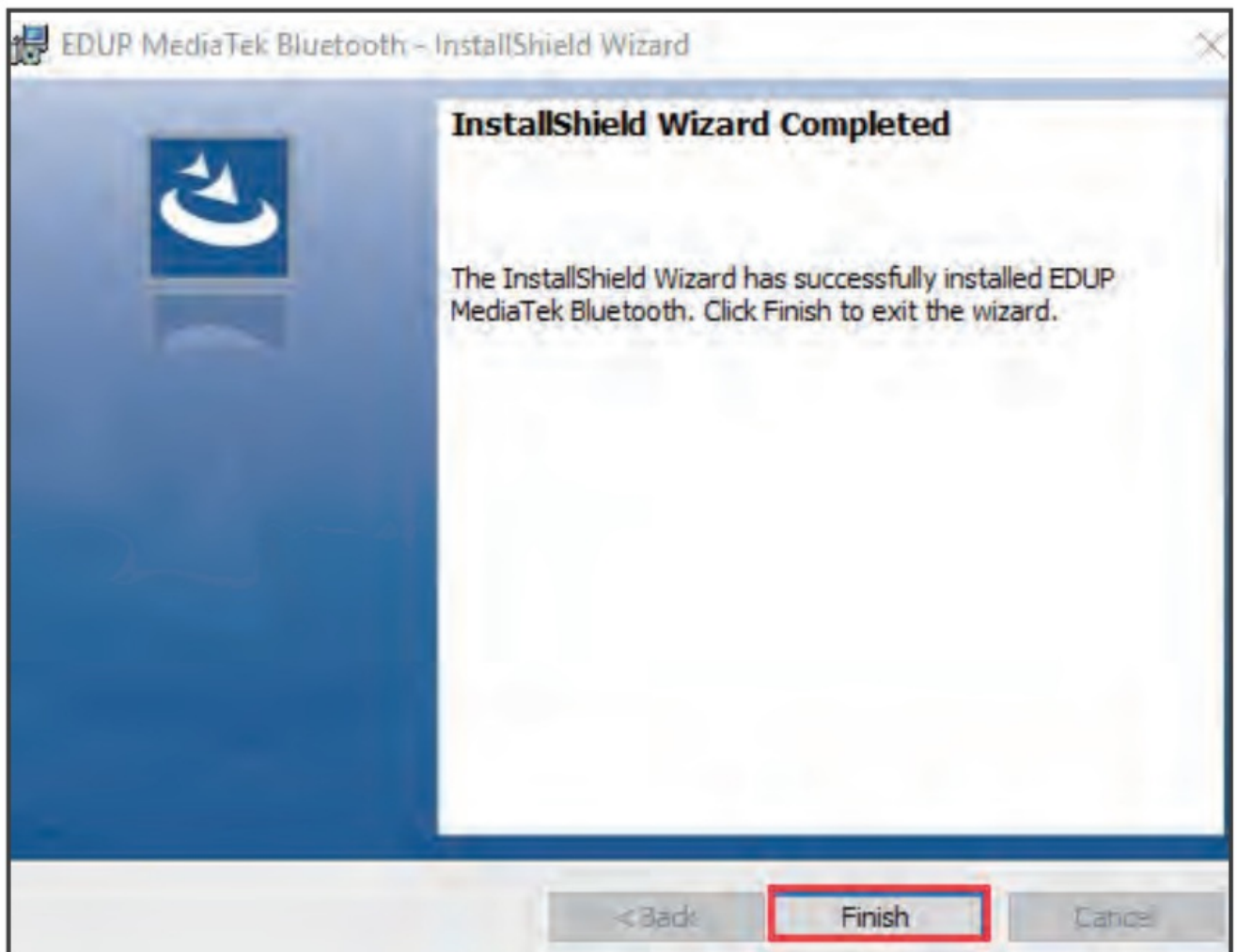
1. Right click on the CD-ROM to open the driver files.



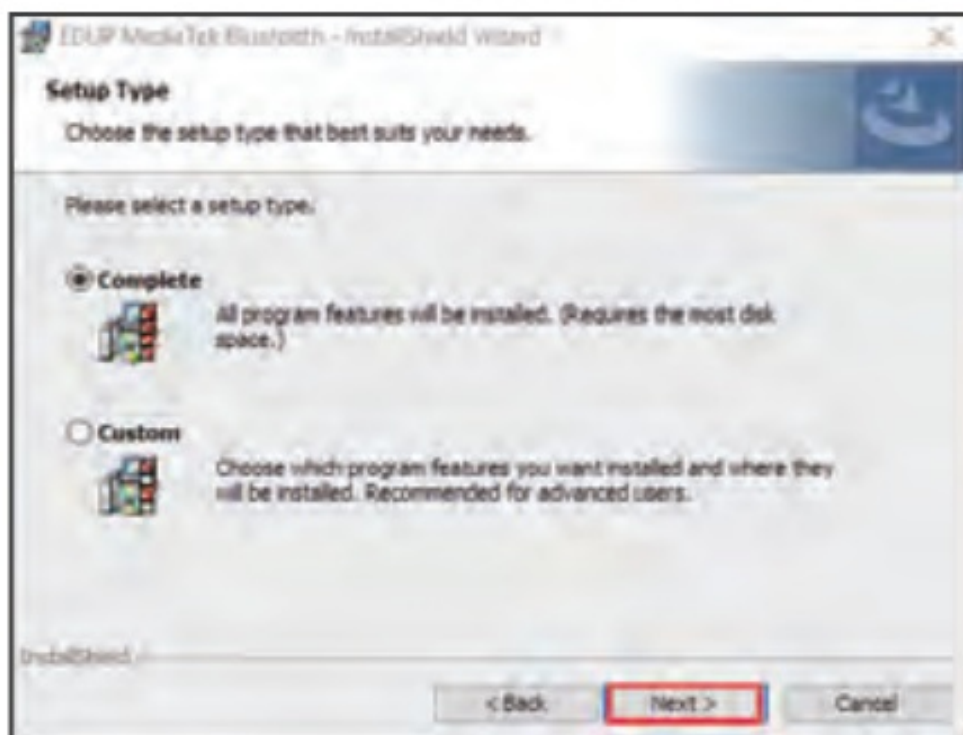
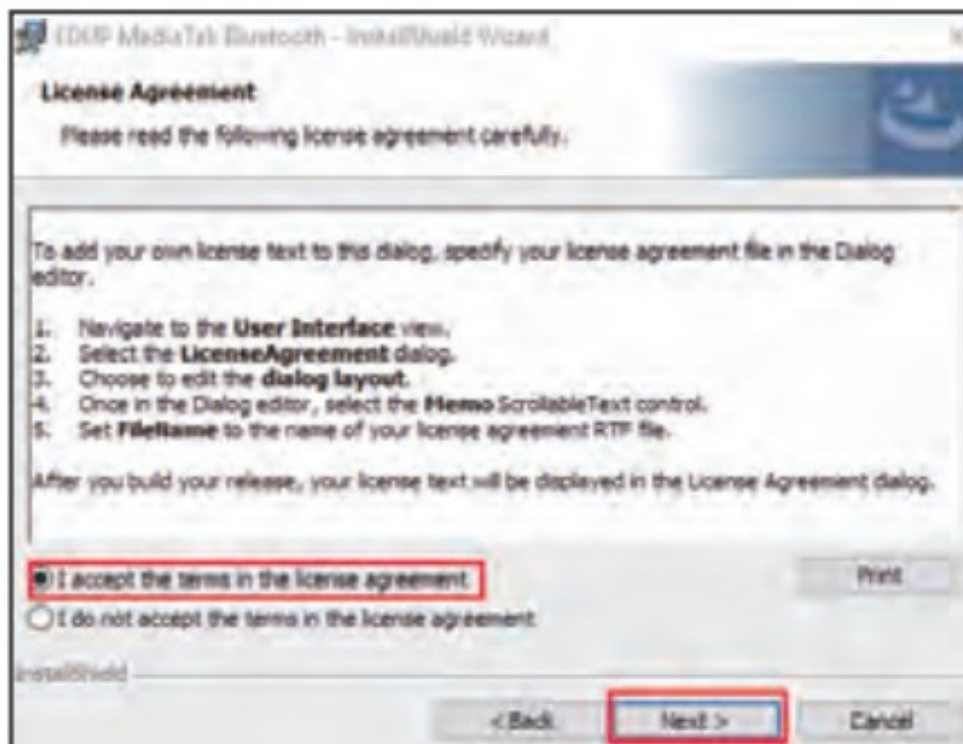
2. Choose "bluetooth driver", click "setup", show as below picture:



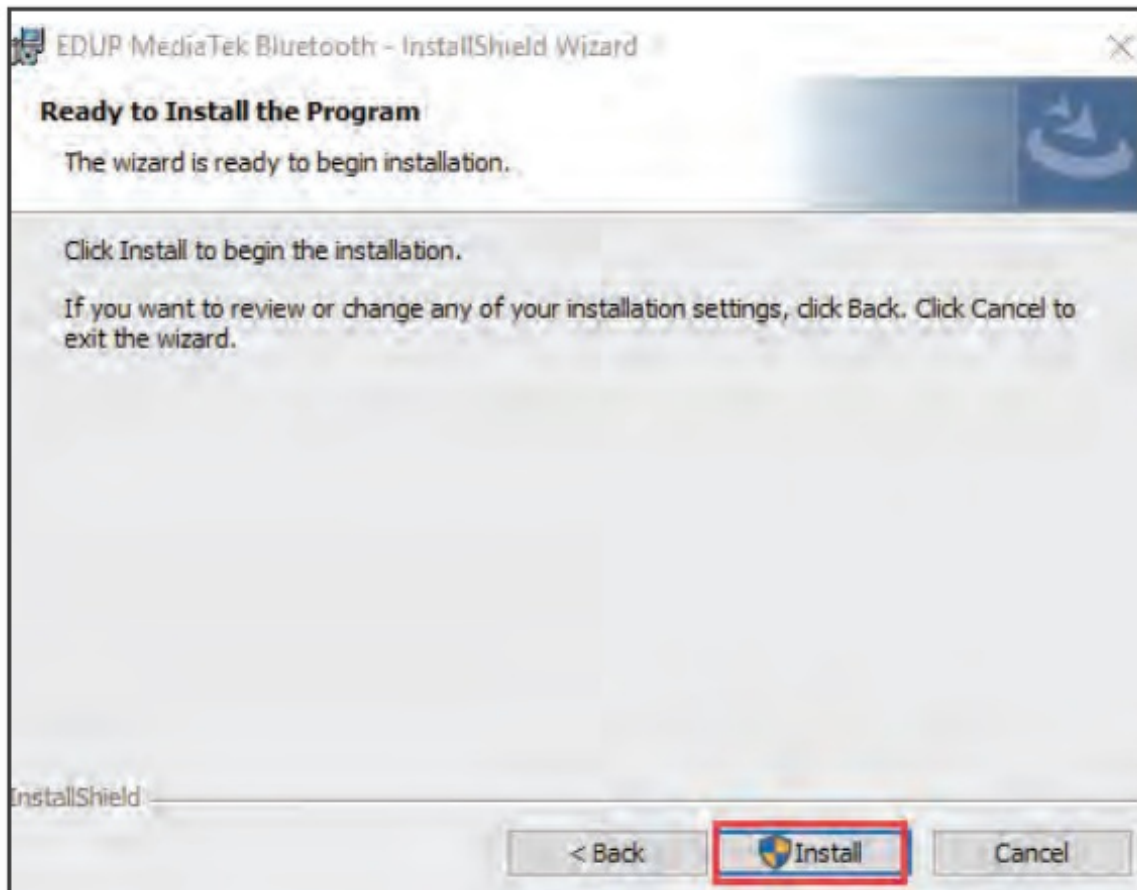
3. Click "Next", show as below picture:



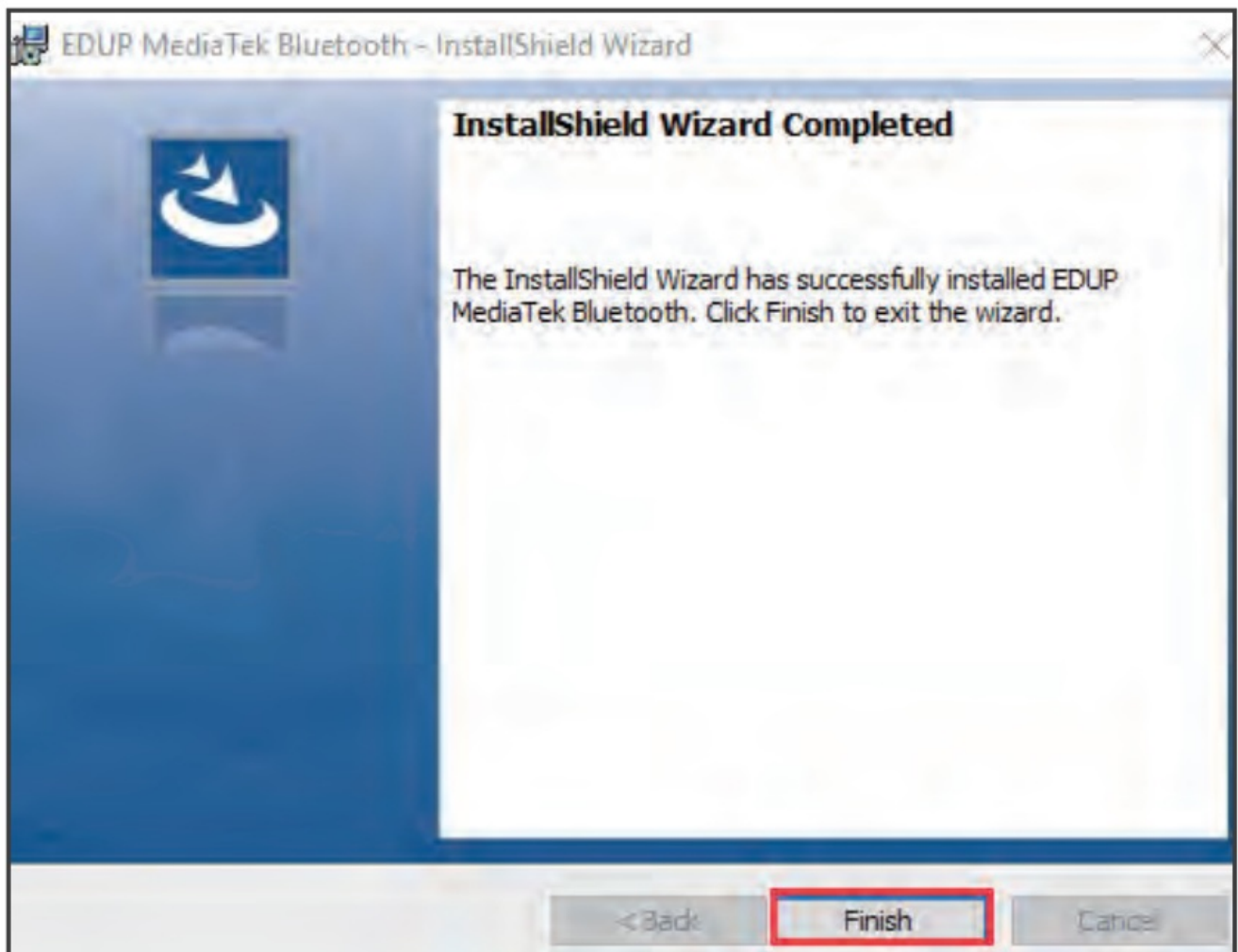
4. Choose " I accept the terms In the license agreement ", then Click " Next " :



5. Click "Install", install the driver program :



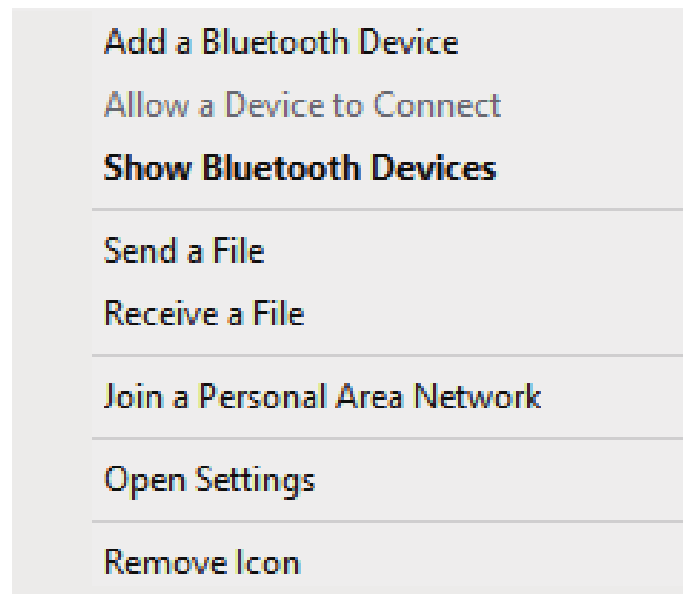
6. After installed, click " Finish " :



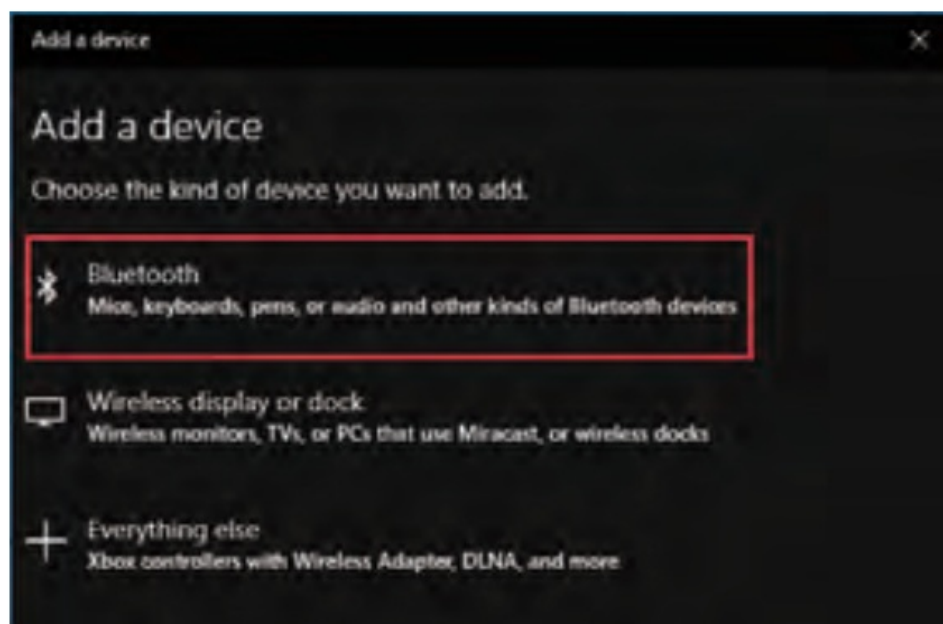
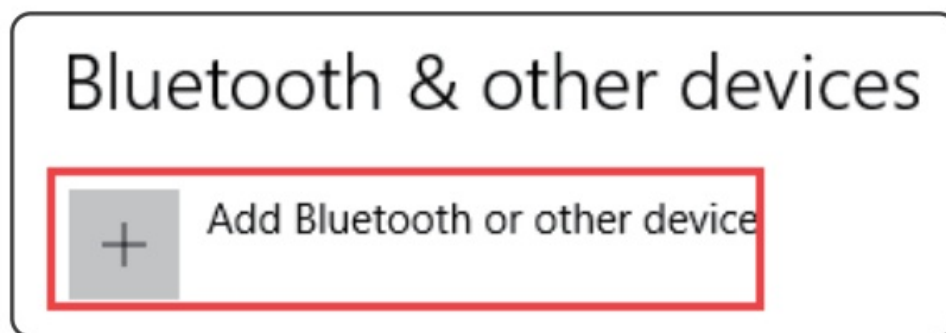
How to connect the Bluetooth Earphones with the adapter?

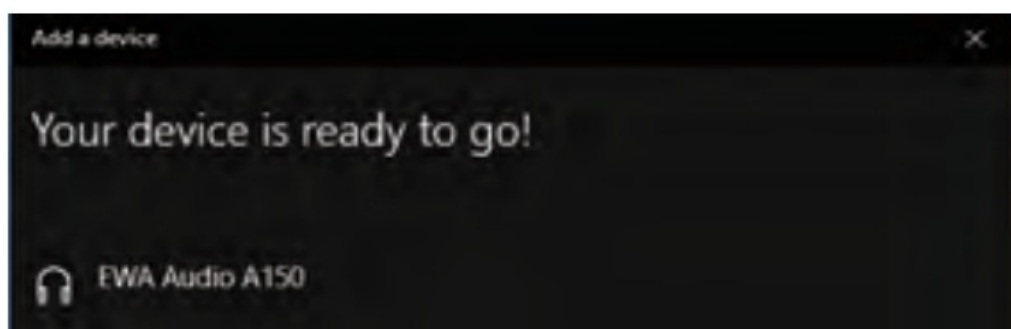
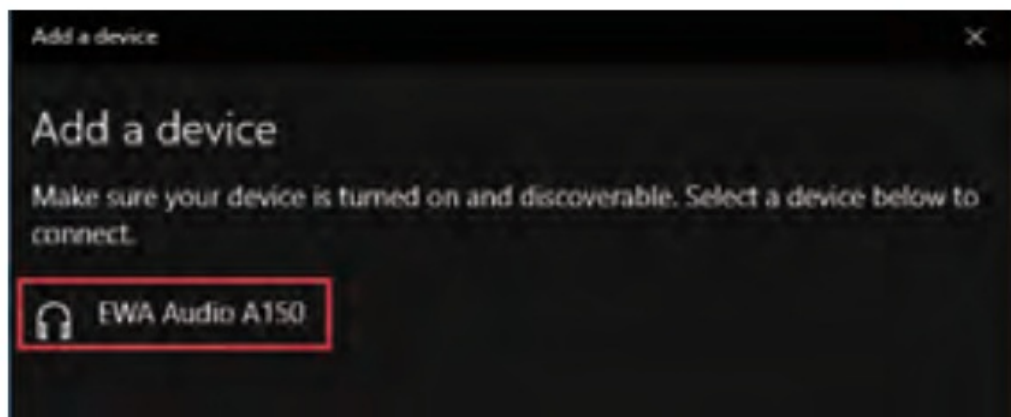


1. Find the Bluetooth Icon In the lower right corner of the desktop.
2. Right-click the mouse, select the “Add Device”, search the Bluetooth.
3. Make sure your Bluetooth device was turned on and ready to pair.




4. Bluetooth earphone will be detected below after a while. Double click the earphone icon to pairing.





Documents / Resources

	Shenzhen Edup Electronics Technology EPEP9655 Bluetooth PCI-E WiFi Card [pdf] User Manual EPEP9655, 2AHRD-EPEP9655, 2AHRDEPEP9655, EPEP9655 Bluetooth PCI-E WiFi Card, Bluetooth PCI-E WiFi Card
---	---

References

-  [PDFs ändern, bearbeiten, zusammenfügen und editieren mit dem Editor](#)