



Shenzhen Edup Electronics Technology EPAC1635 USB Wireless Adapter Installation Guide

[Home](#) » [Shenzhen Edup Electronics Technology](#) » Shenzhen Edup Electronics Technology EPAC1635 USB Wireless Adapter Installation Guide 



SHENZHEN

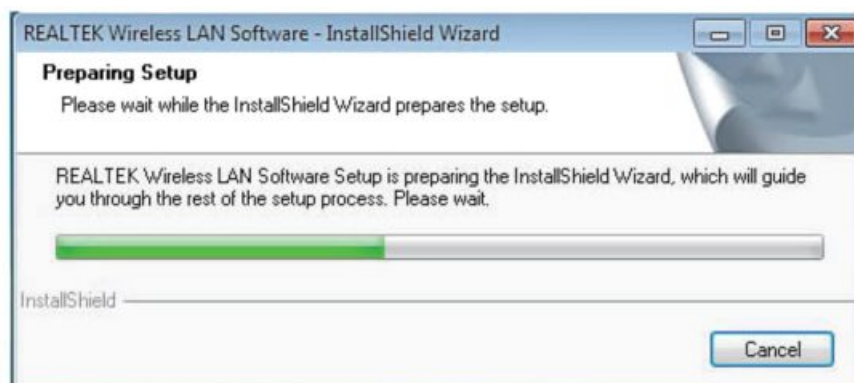
Edup Electronics Technology EPAC1635 USB Wireless Adapter Installation Guide

Note: Is this Manual is based on Windows?

1. Put in the CD and find windows file “windows (XP, Vista,win7,win8, win 1 O)” and Setup.exe.

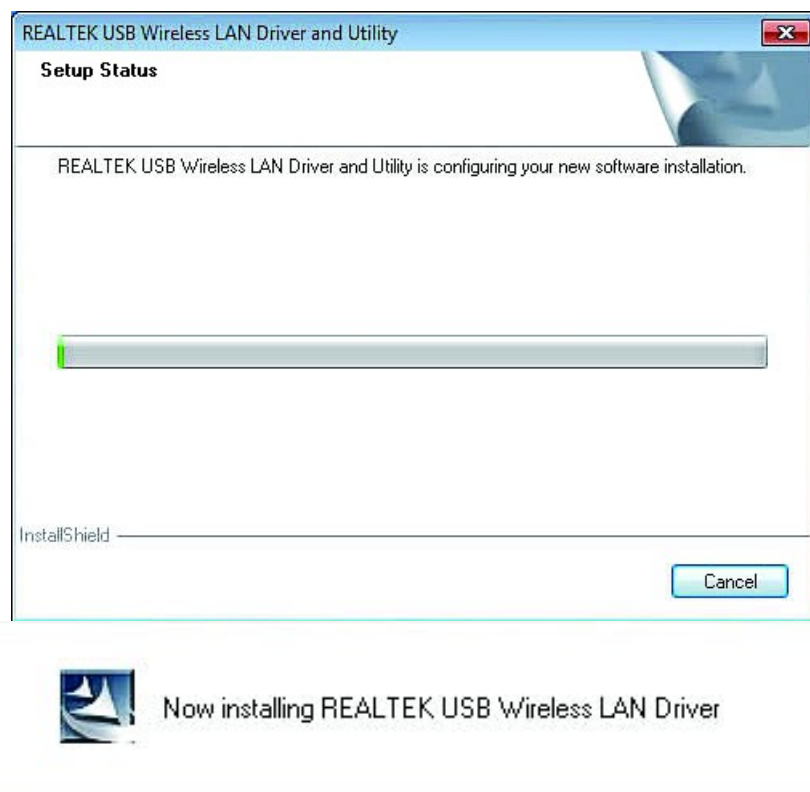


2. Double click Setup.exe file, Software begins to initialize, then click the “Next”. There shows the installation progress.





3. Do not interrupt installation, Click “Finish” to finish the driver installation. The computer automatically restarts.





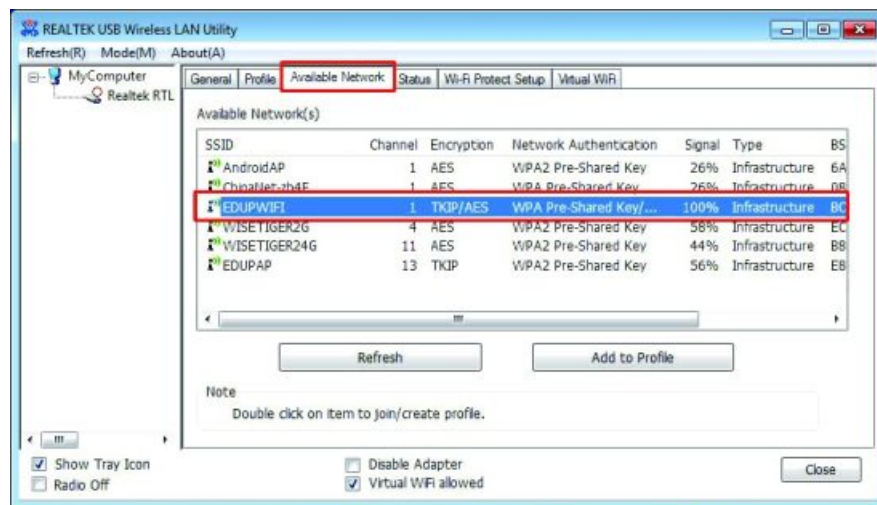


4. Plug the Wireless USB Adapter into the USB port of your PC

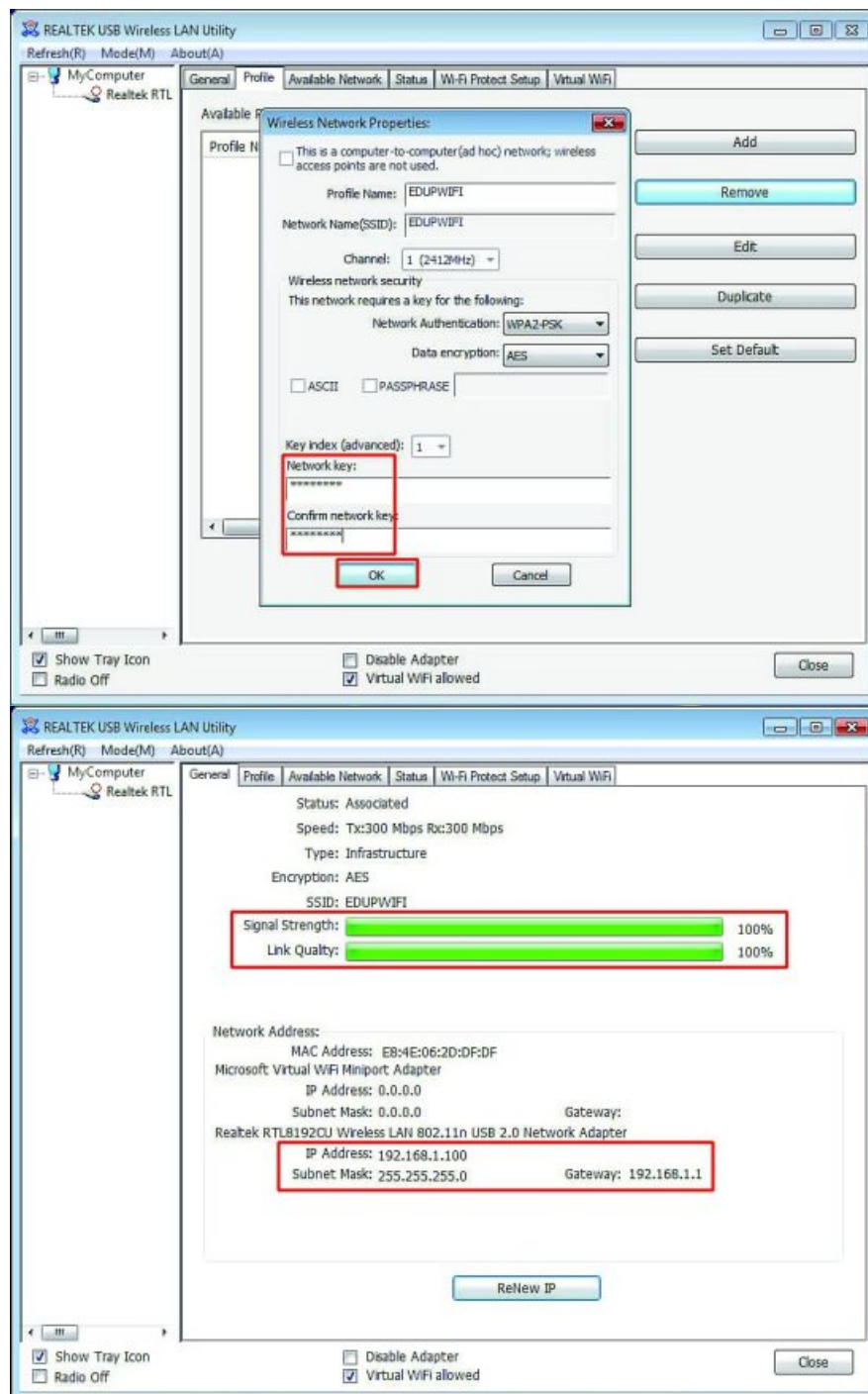
Wireless connection (two ways to realize


Wireless connection 1:

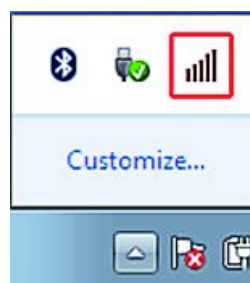
5. Click Icon  in the Windows system tray, which locates in the bottom-right corner of your computer screen or , and pops up a message and Click "Available Network" Double-click the utility icon or right-click the icon and the Wireless Network Connection window appears then double-click the SSID you preferred.




Type the encryption key that you wrote down earlier in both the Network key and Confirm network key boxes, and then click "ok".



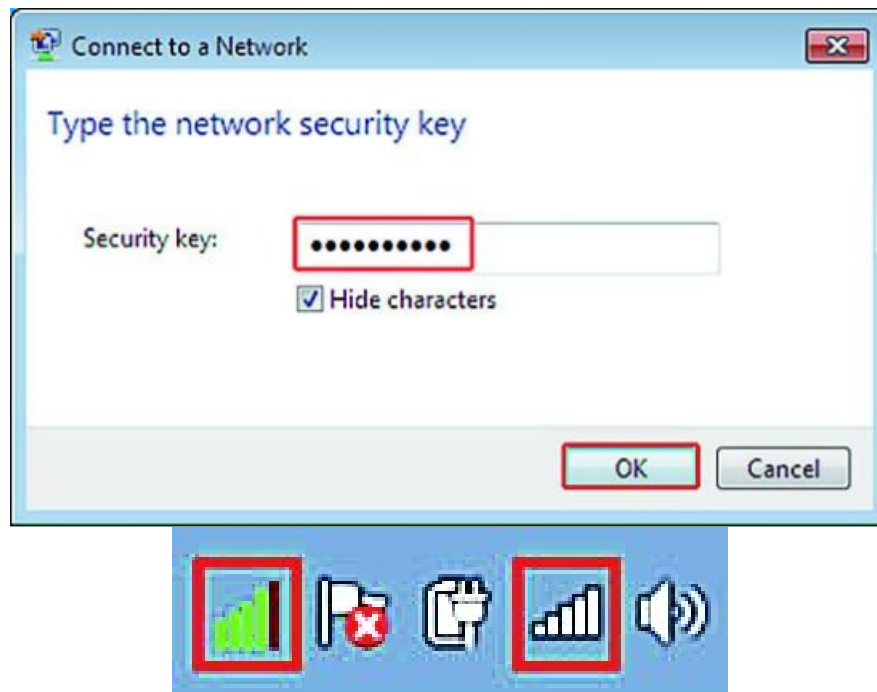
Note: if there is no icon  , please find it in the right button, it has been hidden as the following pictures shows: Wireless Connection2.



6. Click Icon  which locates in the bottom-right corner of your computer screen, click the wireless network list and choose the SSID you preferred. and double click (Or click "Connect").



Type the encryption key and then click “ok”.



FCC Warning

This device complies with part 15 of the FCC Rules. Operation is subject to the following two conditions: (1) This device may not cause harmful interference, and (2) this device must accept any interference received, including interference that may cause undesired operation.

Any changes or modifications not expressly approved by the party responsible for compliance could void the user's authority to operate the equipment.

Note: This equipment has been tested and found to comply with the limits for a Class B digital device, pursuant to part 15 of the FCC Rules. These limits are designed to provide reasonable protection against harmful interference in a residential installation. This equipment generates uses and can radiate radio frequency energy and, if not installed and used in accordance with the instructions, may cause harmful interference to radio communications. However, there is no guarantee that interference will not occur in a particular installation. If this equipment does cause harmful interference to radio or television reception, which can be determined by turning the equipment off and on, the user is encouraged to try to correct the interference by one or more of the following measures:

- Reorient or relocate the receiving antenna.
- Increase the separation between the equipment and receiver.

- Connect the equipment into an outlet on a circuit different from that to which the receiver is connected.
- Consult the dealer or an experienced radio/TV technician for help.


This equipment complies with FCC radiation exposure limits set forth for an uncontrolled environment. This equipment should be installed and operated with a minimum distance of 20cm between the radiator & your body. Operations in the 5.15-5.25GHz band are restricted to indoor usage only.

Contents

1 Documents / Resources

2 Related Posts

Documents / Resources

	<div>Shenzhen Edup Electronics Technology EPAC1635 USB Wireless Adapter [pdf]</div> <div>Installation Guide</div> <div>EPAC1635, 2AHRD-EPAC1635, 2AHRDEPAC1635, EPAC1635 USB Wireless Adapter, USB W ireless Adapter, Wireless Adapter, Adapter</div>
---	---