



Shenzhen Edup Electronics Technology EP-9619 Wireless Adapter Installation Guide

[Home](#) » [Shenzhen Edup Electronics Technology](#) » Shenzhen Edup Electronics Technology EP-9619 Wireless Adapter Installation Guide 



SHENZHEN

600Mbps Dual Band PCI-E Wireless Adapter
Quick Installation Guide



Note: This manual is based on Windows 7, other systems can refer installation steps

Contents

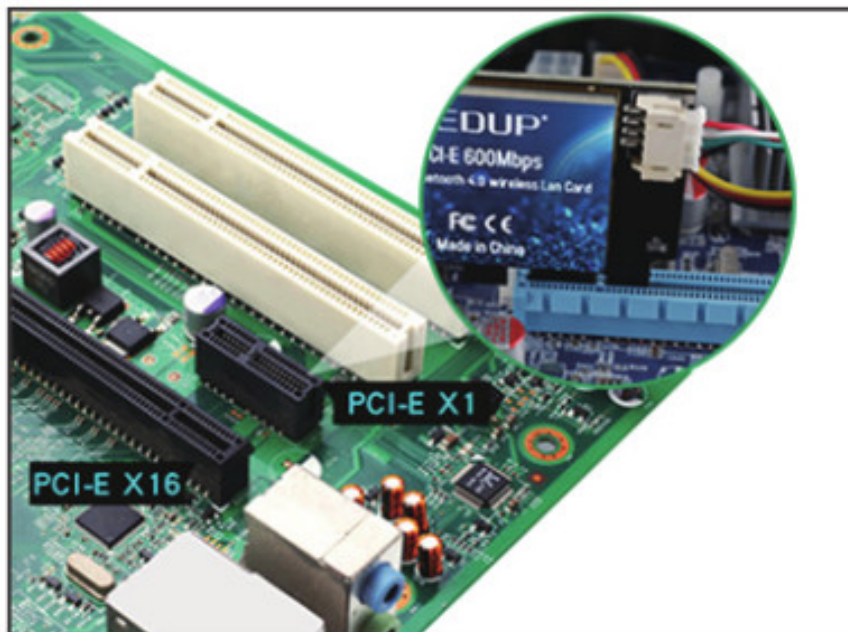
- [1 Hardware Installation](#)
- [2 Software Installation](#)
- [3 Documents / Resources](#)
- [4 Related Posts](#)

Hardware Installation

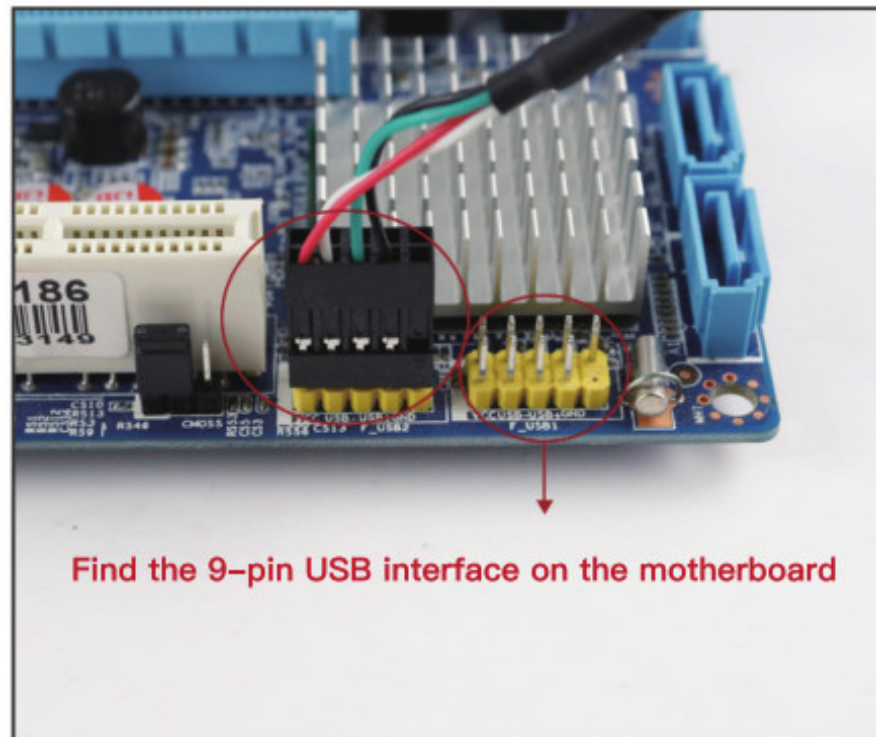
1. Open the side cover of the chassis and remove the chassis tailgate screws of the PCI-E card slot.



2. Insert the product into the corresponding card slot tightly, and either PCI-E/X1/X4/X8/X16 slots are available.



3. Find the 9-pin USB interface on the motherboard, insert the external wiring of the PCI-E card into the USB interface of the motherboard, and install the screws to secure the bracket.



Software Installation

A. Driver Installation steps (Based on Windows 7)

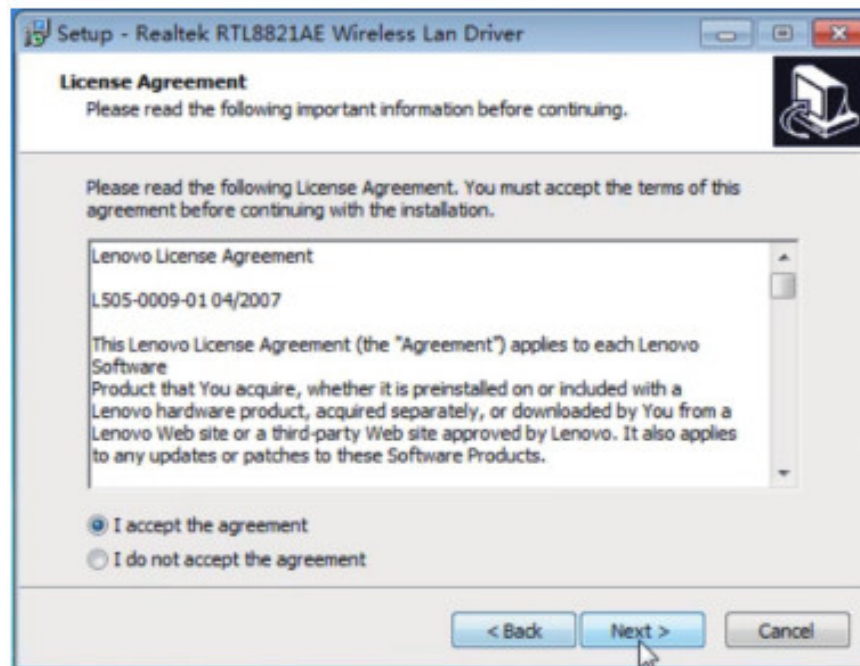
1. Open the driver CD (or you can download the driver from EDUP official website “www.szedup.com” — “Support” – “Driver Download”), and find the folder named “Wi-Fi”, click and find the corresponding system version driver to install.



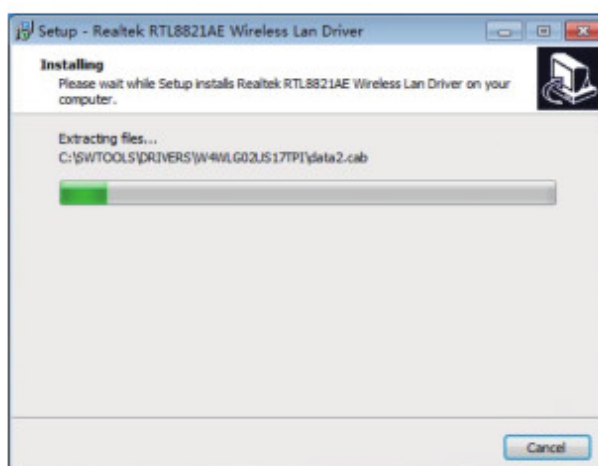
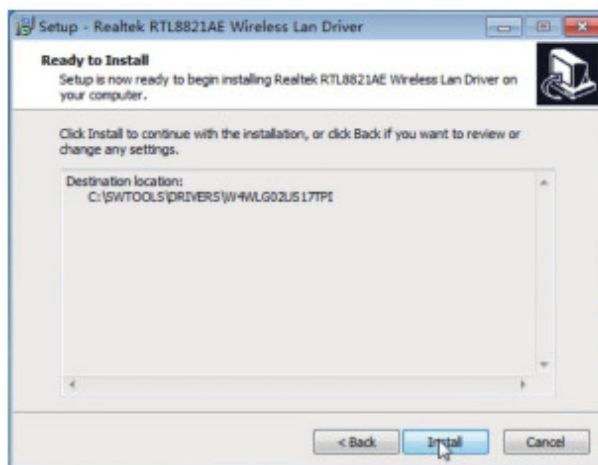
2. Click on the corresponding file to install, and click “Next”.

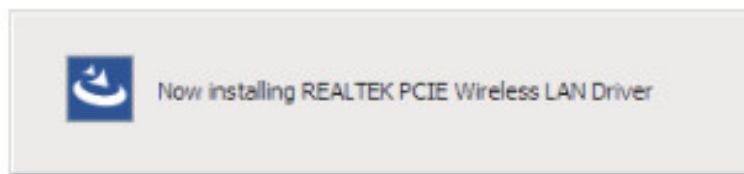
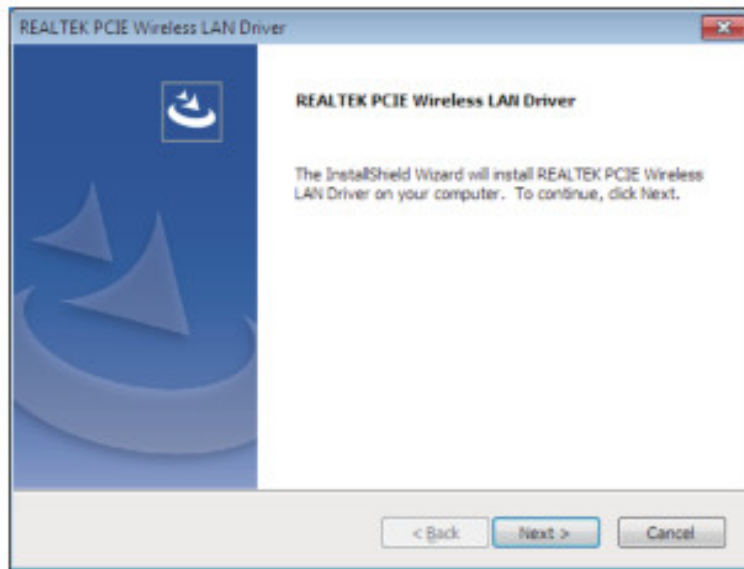


3. Click on "I accept the agreement", then click "Next".

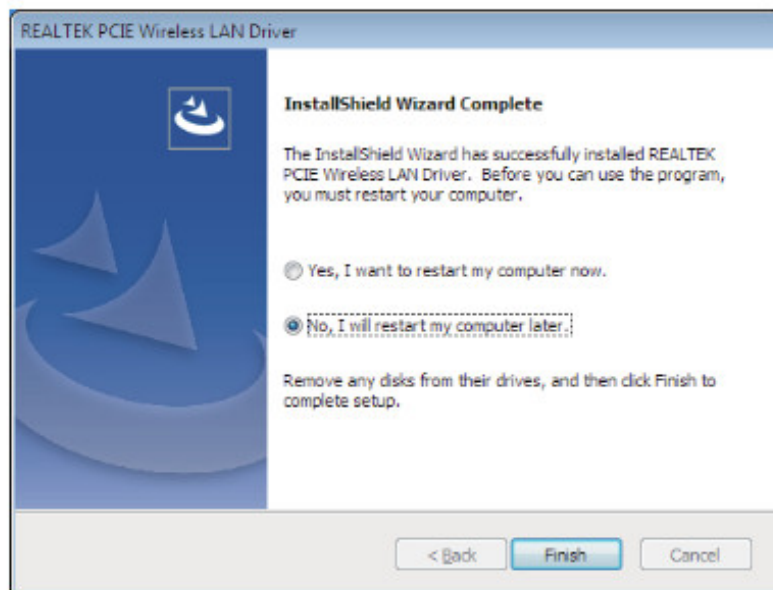


4. Display the installation interface.





5. Finishing installation, click “No, I will restart my computer later”, Click “Finish”.



B. Bluetooth Driver Installation Steps

1. Open the driver CD or the driver file, and find the folder named “Bluetooth” click and find the corresponding system version driver to install(Based on Windows 7).

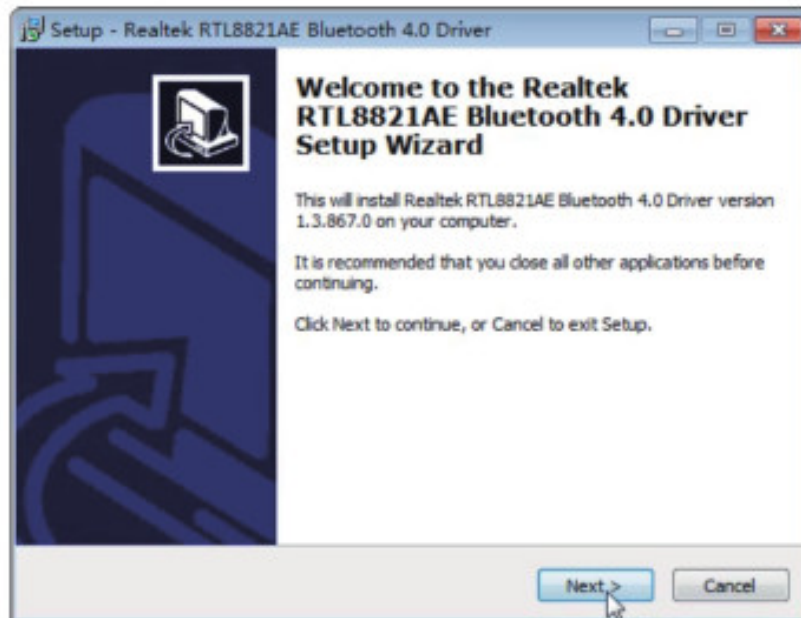


bluetooth

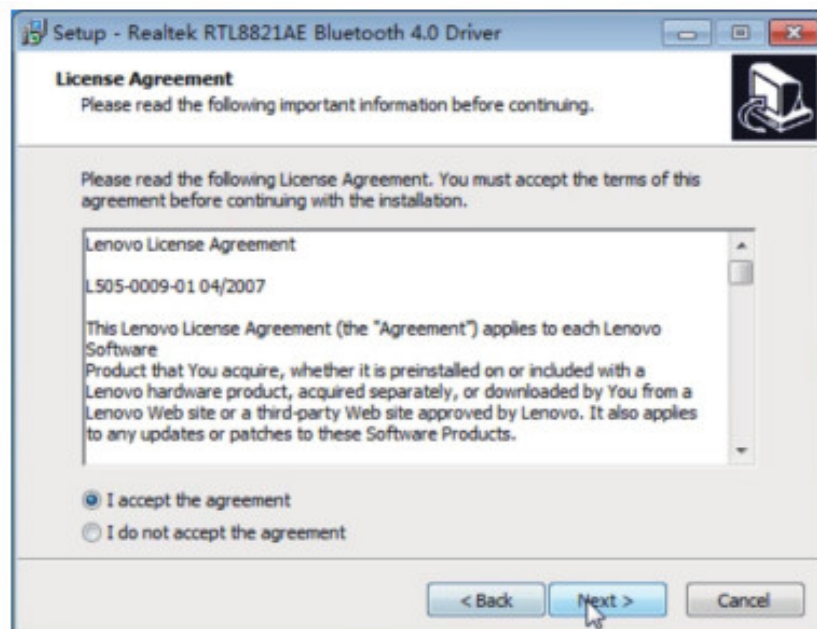


win7 32x.exe

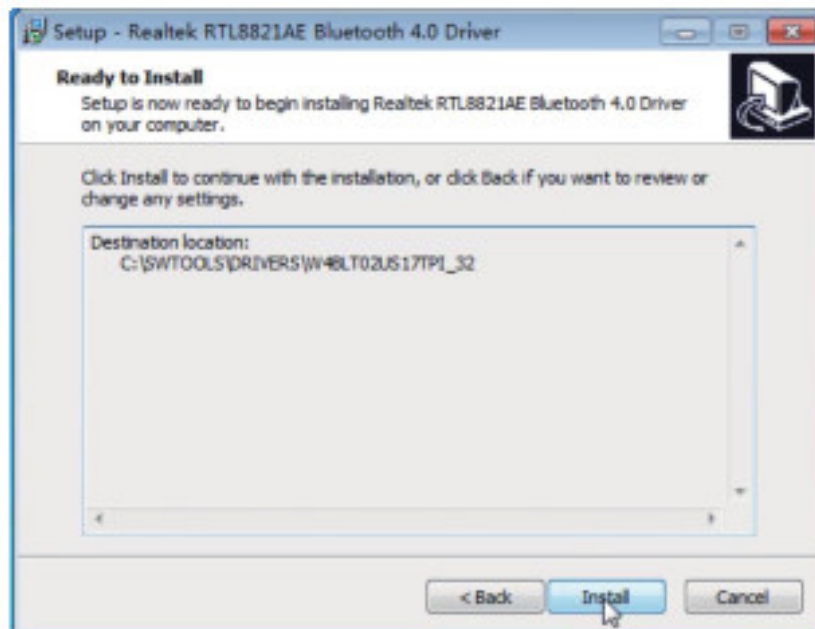
2. Click the driver version you need to install and click “Next”.



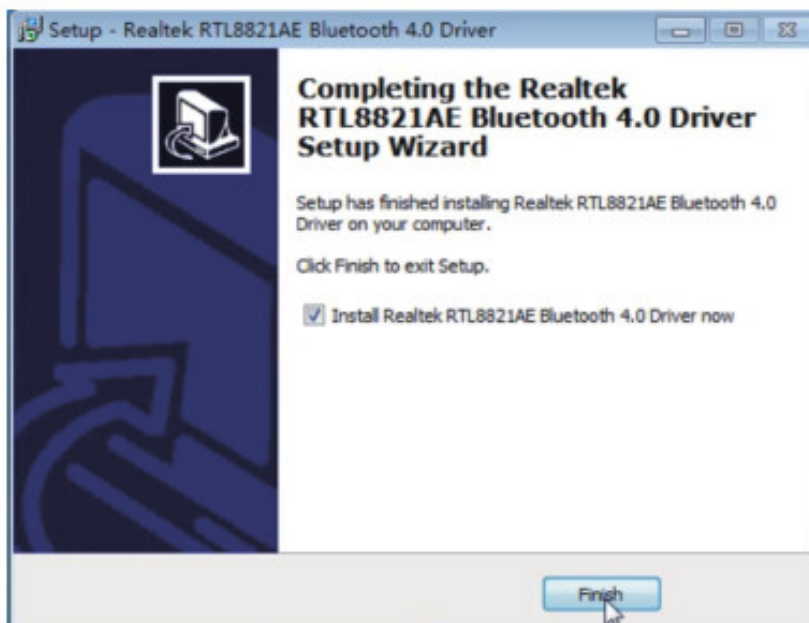
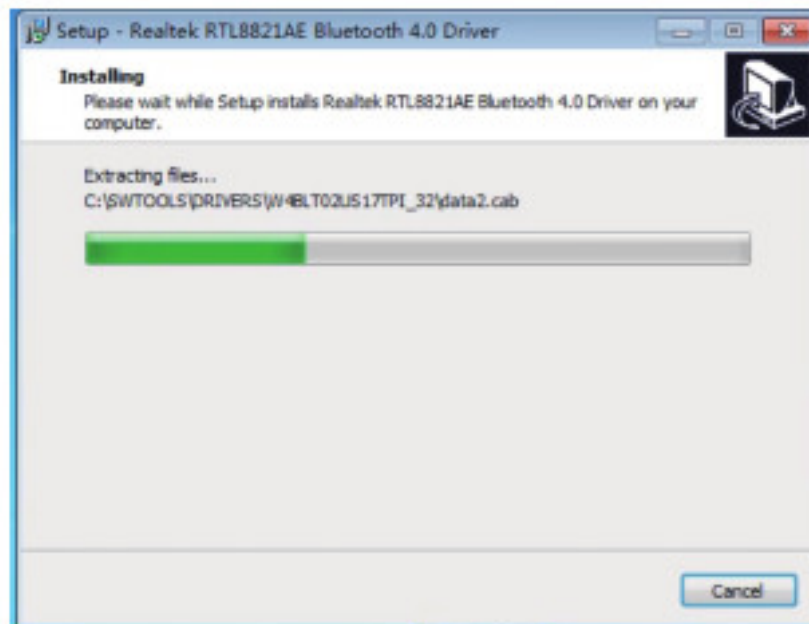
3. Click “ I accept the agreement” and click “Next”.

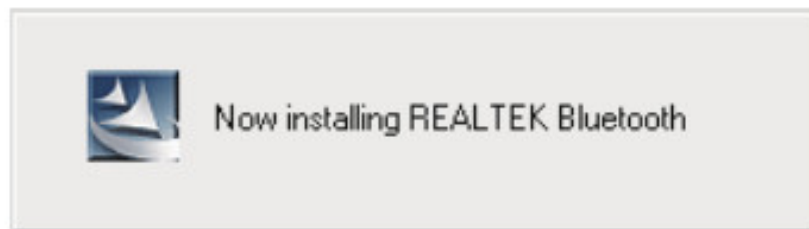
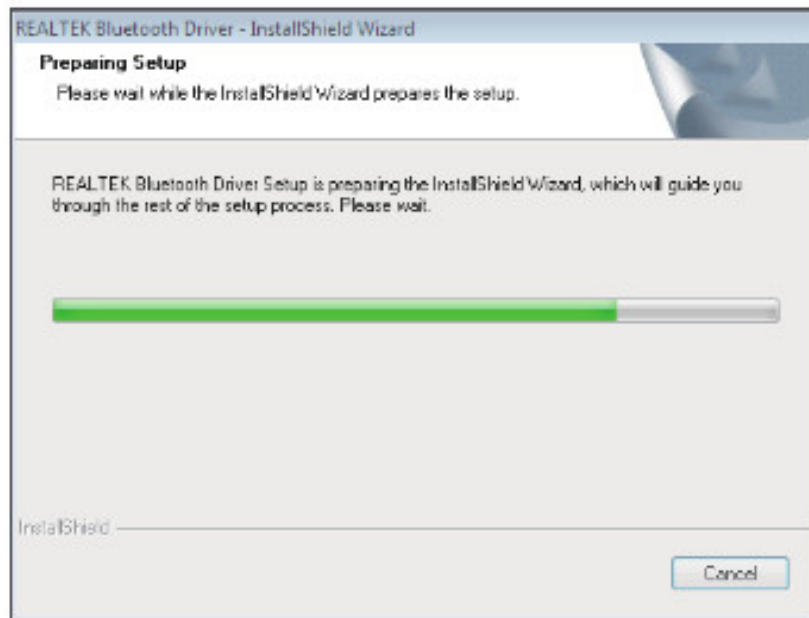


4. Click “Install” and start to install.

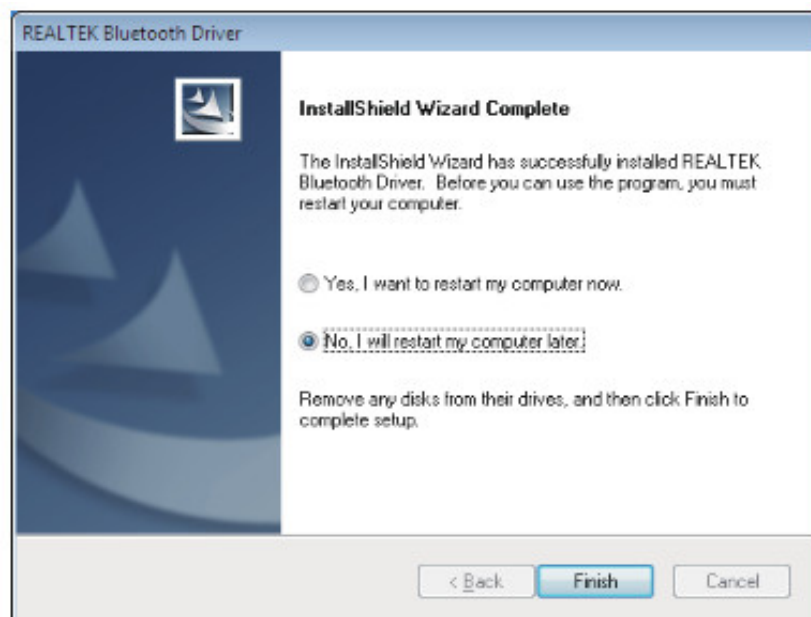


5. Installation interface display.





6. Finish installing, click "No, I will restart my computer later" Click " Finish".



FCC Statement

This device complies with part 15 of the FCC Rules. Operation is subject to the following two conditions:

1. This device may not cause harmful interference, and
2. this device must accept any interference received, including interference that may cause undesired operation.

Any changes or modifications not expressly approved by the party responsible for compliance could void the user's authority to operate the equipment. FCC Radiation Exposure Statement: This equipment complies with FCC radiation exposure limits set forth for an uncontrolled environment. This transmitter must not be co-located or

operating in conjunction with any other antenna or transmitter. This equipment should be installed and operated with minimum distance 20cm between the radiator & your body.

Documents / Resources

	<p>Shenzhen Edup Electronics Technology EP-9619 Wireless Adapter [pdf] Installation Guide EP-9619, EP9619, 2AHRDEP-9619, 2AHRDEP9619, EP-9619 Wireless Adapter, Wireless Adapter, Adapter</p>
---	---