



## Shenzhen Edup Electronics Technology AX1696 WiFi 6 AX1800 USB Wireless Adapter Installation Guide

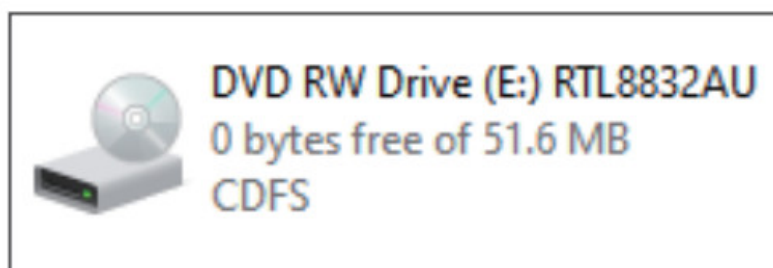
[Home](#) » [Shenzhen Edup Electronics Technology](#) » Shenzhen Edup Electronics Technology AX1696 WiFi 6 AX1800 USB Wireless Adapter Installation Guide



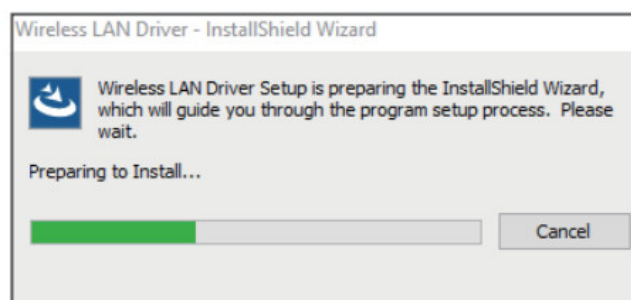
# SHENZHEN

**Quick Installation Guide**  
**WiFi 6 AX1800 USB Wireless Adapter**

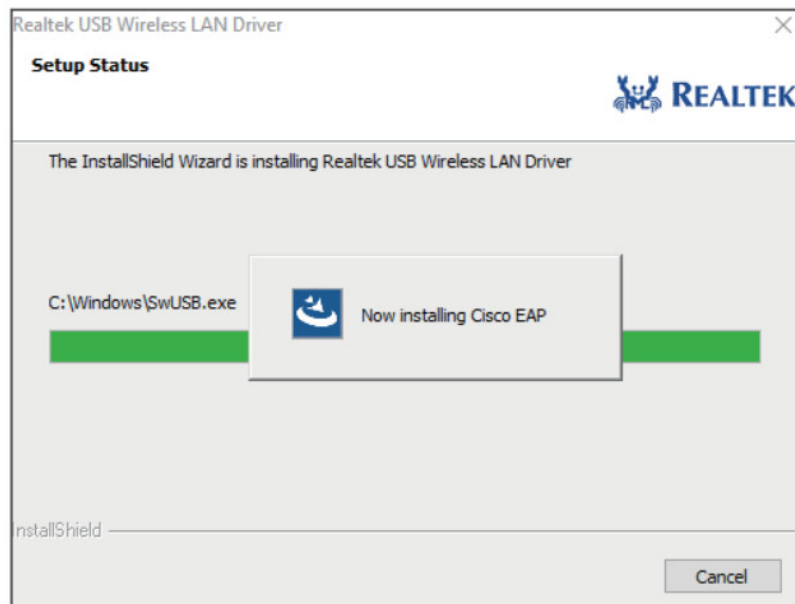
1. Insert the included CD into the CD—ROM, and find the file RTL8832AU. Or you can download the appropriate driver from the EDUP website.



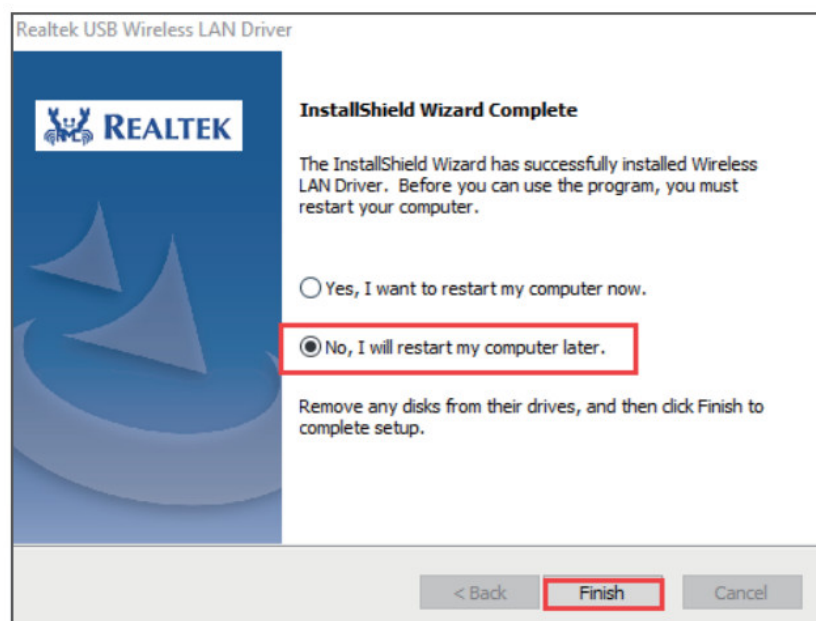
2. Plug the wifi adapter into your computer, open the driver folder and double click “Setup”.



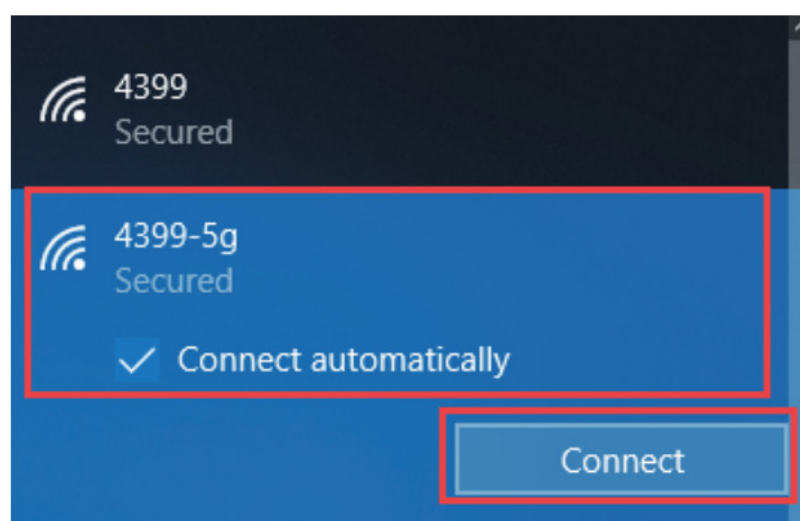
3. It may take about 1 minute to complete installation, wait for the



4. Choose "No, I will restart my computer later" to finish the process.

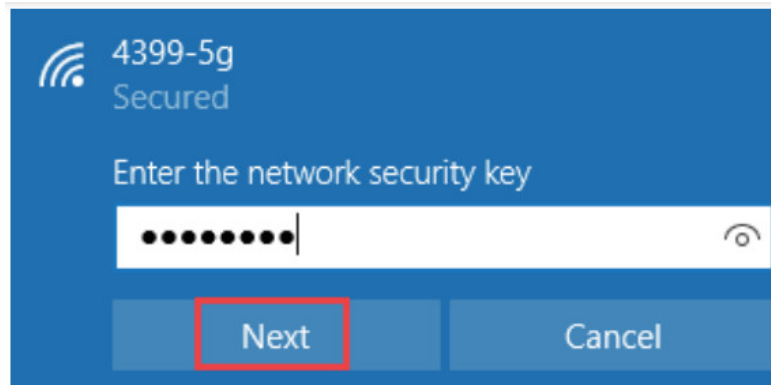


5. Connect wifi correctly then you can access to the Internet.

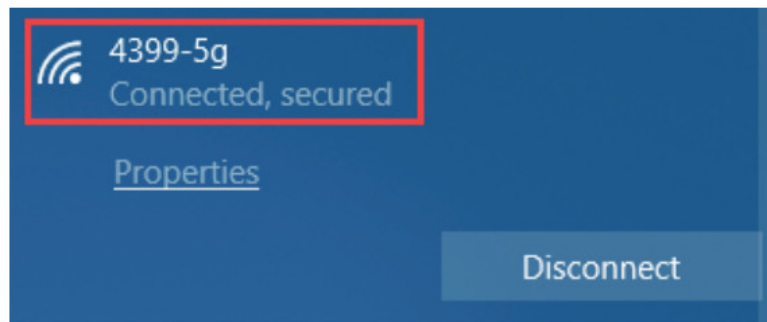


1. Open the Internet icon at the lower right corner of the computer.
2. Searching and connecting the Wi-Fi you preferred on the detected Wi-Fi list.

3. Enter the Wi-Fi password to connect.



4. Finally, you are connected to the WI-Fi.



This product needs to be installed on a fixed host, and the distance from the antenna to the human body needs to be greater than 20cm



**Contents** [ [hide](#)

[1 FCC Warning](#)

[2 Documents /  
Resources](#)

[3 Related Posts](#)

**FCC Warning**

This device complies with part 15 of the FCC Rules. Operation is subject to the following two conditions:  
(1) This device may not cause harmful interference, and (2) this device must accept any interference received, including interference that may cause undesired operation.


Any changes or modifications not expressly approved by the party responsible for compliance could void the user's authority to operate the equipment.

**Note:** This equipment has been tested and found to comply with the limits for a Class B digital device, pursuant to part 15 of the FCC Rules. These limits are designed to provide reasonable protection against harmful interference in a residential installation. This equipment generates uses and can radiate radio frequency energy and, if not installed and used in accordance with the instructions, may cause harmful interference to radio communications. However, there is no guarantee that interference will not occur in a particular installation. If this equipment does cause harmful interference to radio or television reception, which can be determined by turning the equipment off and on, the user is encouraged to try to correct the interference by one or more of the following measures:

- Reorient or relocate the receiving antenna.
- Increase the separation between the equipment and receiver.
- Connect the equipment into an outlet on a circuit different from that to which the receiver is connected.
- Consult the dealer or an experienced radio/TV technician for help.

This equipment complies with FCC radiation exposure limits set forth for an uncontrolled environment. This equipment should be installed and operated with a minimum distance of 20cm between the radiator & your body.

Documents / Resources

	<a href="#">Shenzhen Edup Electronics Technology AX1696 WiFi 6 AX1800 USB Wireless Adapter</a> [pdf] Installation Guide EPAX1696, 2AHRD-EPAX1696, 2AHRDEPAX1696, AX1696 WiFi 6 AX1800 USB Wireless Adapter, WiFi 6 AX1800 USB Wireless Adapter, AX1800 USB Wireless Adapter, Wireless Adapter , Adapter
---	--