



# Shenzhen Divoom Technology PIXOO64 Pixoo 64 with WiFi User Guide

[Home](#) » [Shenzhen Divoom Technology](#) » Shenzhen Divoom Technology PIXOO64 Pixoo 64 with WiFi User Guide 



SHENZHEN

Divoom Technology PIXOO64 Pixoo 64 with WiFi  
User Guide

## Nice to meet you!

This is Pixar 64, a new multi-functional informative smart display for your home.

With a 64×64 pixel art LED display and wireless Internet connectivity, Pixoo 64 unlocks the world of pixel art, and you can decorate your house with this unique gadget.

### Contents

- [1 What's included?](#)
- [2 Product details](#)
- [3 General Troubleshoot:](#)
- [4 Product specification](#)
- [5 Warranty information:](#)
- [6 Limited Warranty](#)
- [7 PRODUCT WARRANTY CARD](#)
- [8 Documents / Resources](#)
- [9 Related Posts](#)

## What's included?

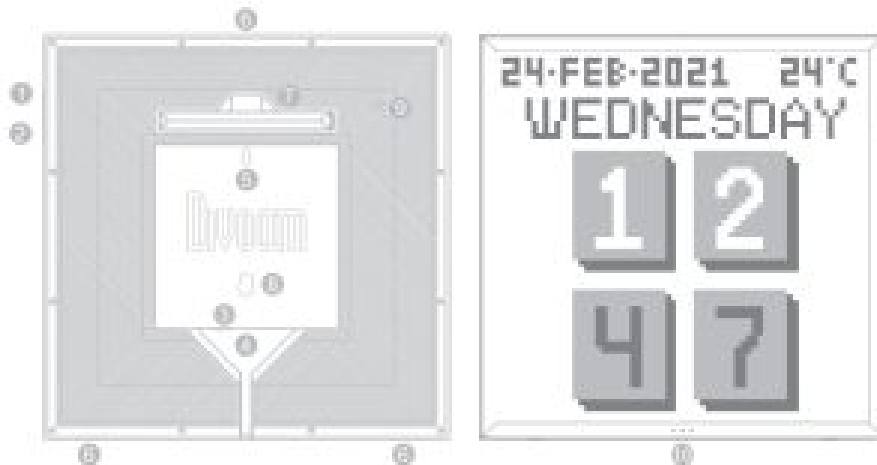
- Pixoo 64
- Mounting screws
- User manual
- USB-C Charging cable



Thank you for purchasing a Divoom product! Please read this manual carefully. Visit [www.divoom.com](http://www.divoom.com) to learn more about our other products.

Due to the nature of the technology products, the information on this manual is subject to change without prior notice. If you have any questions, please feel free to contact the Divoom customer representative.

## Product details



1. PRESS: Power ON/OFF HOLD (8 seconds): Reset network settings	6. MOUNTING SCREW HOLES
2. PRESS: Change channels HOLD (3 seconds): Switch recent clock interfaces/Music visualizer effects / Custom channels	7. MOUNTING STAND/TRAY
3. TF CARD: For Divoom use only. For a new card, format the TF card before use (use FAT file format, ex FAT not supported).	8. MOUNTING STAND HOLE
4. USB-C POWER PORT	9. BUZZER HOLE
5. WALL MOUNT HOLES	10. MICROPHONE HOLE

## How to set up the network connection?

The Divoom application is available in both iOS and Android APP stores. You can search 'Divoom' or scan this QR code.

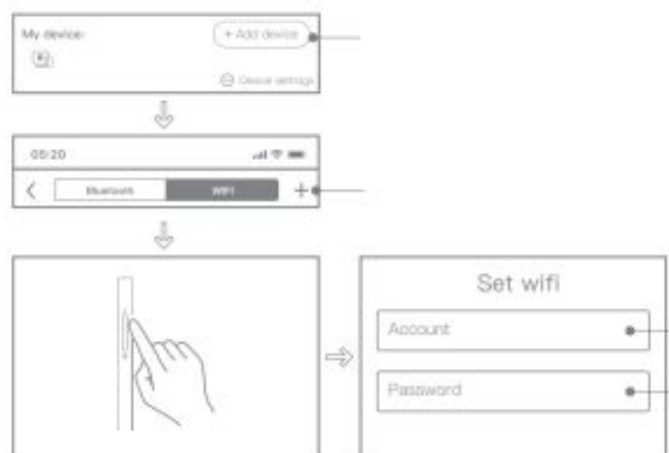


Download the Divoom  
from the App Store  
and Google Play™

<http://www.divoom.com/AppDownload/>

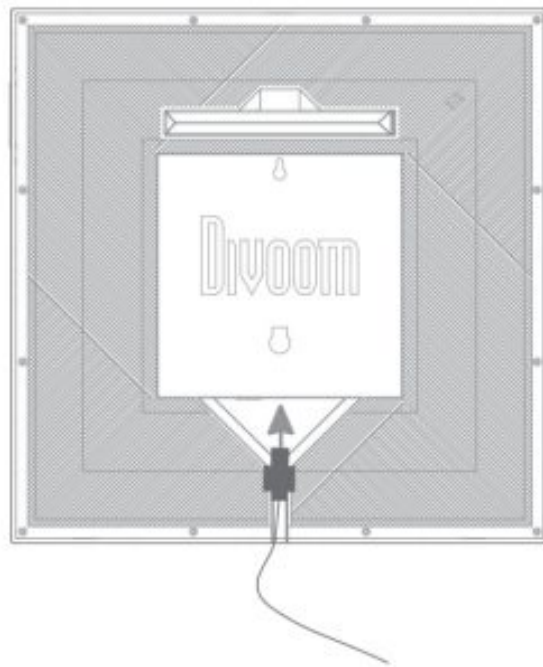
1. Please download and install the Divoom APP from the App Store or Google Play
2. Please turn on the phone's Bluetooth, and connect to a 2.4G wireless Internet network.  
(keep your phone/device close to the network router)
3. Open the App, press Me>My device, and select Internet to pair the device.
4. Connect the device with power, and it should show a 'waiting for config' logo.
5. In-App, press 'Start to pair', and enter the password for the connected network.
6. In-App, it would show 'pairing' for 10 to 20 seconds.
7. Once the device is connected to the network, the App will show successfully connected.

\*If there's an update message, please proceed with the update. Do not unplug the device during its update.



### Reset network?

1. Connect the device to the power cable. Once the device is ON, please hold the ON/OFF button for 8 seconds.
2. The device should be ready for Internet configuration.



### How to power it?

1. Insert the USB-C cable into the USB port on the rear panel.
2. The device will power ON instantly.
3. If the device is currently OFF, you can press its power button to turn it ON.
  - \*Please use the stock USB-C cable. The maximum supported length is 2M.
  - \*\*Please use a USB charger with a 5V2A output.
  - \*\*\*If the device is flickering or random power OFF, please try a different USB cable and/or charger.

### General Troubleshoot:

1. Device is connected with power, but the screen and ON/OFF button is unresponsive.
  - a) Please make sure it's connected with a 5V/2A charger, b) Try a different USB-C cable.
2. Network pairing timeout
  - a) Restart Bluetooth function, delete Bluetooth paired device history, and enable GPS function
  - b) Make sure the phone's connected with a 2.4G Internet network (5G network not supported).
  - c) Make sure the Internet network is working properly, and both devices are near the router.
  - d) Try the pairing process on a different phone. Or reset and re-do the network pairing process.
  - e) Download the latest Divoom App
3. Device shows a nonsupported TF card logo
  - a) Make sure the TF card is properly inserted. b) Try a different TF card(Device will download the firmware to the card via Internet, please pull & insert the USB cable when the new card's ready).
4. Device shows number and full panel coloring
  - a) Make sure the lighting key is unstuck, b) Reconnect the power cable

### Product specification

Dimension (mm): 262×17.8×261.4 Weight: 740g Color: Full RGB	Color Temp: 1600-6500K Color: Full RGB
Brightness: 80@4000K Output: 10W	Microphone: 6050 Full Direction -42+/-3dB Charge: via USB cable, 5V(+/-0.25V)/2A

### Warranty information:

1. If you believe your product is defective within the warranty period, please bring the product back to where the product was initially purchased. Alternatively, or within any other questions or concerns, please call customer support at +0755 86290767, or contact us via email at [support@divoom.com](mailto:support@divoom.com).
2. If within 12 (24 if required by local law) months of purchase this device or any part thereof is proven to be defective by reason of faulty workmanship or defects in materials, we will at our option repair or replace the same free of charge of labor or materials on condition that similar to the product current condition.
3. The sales invoice or receipt with the date and source of purchase must be presented together with the defective unit. We cannot validate the product warranty information without an invoice.
4. The warranty does not cover product failures that have been caused by the use of accessories other peripheral devices which are not Divoom branded original accessories intended for use with the product.
5. The warranty does not cover product failures caused by: modification, repair, and disassembling by any person who is not authorized by the manufacturer.
6. The warranty is nontransferable. Any defective unit or part shall become the property of the manufacturer.
7. Warranty does not cover any damage caused by misuse, drop, hit or negligence.
8. The customer is responsible for the return shipping charges.

This product is in compliance with Directive 2011/65/EU of the European Parliament and of the Council of 8 June 2011 on the restriction of the use of certain hazardous substances in electrical and electronic equipment.

### Please read the following instructions carefully:

- Please follow our product installation and operation instructions.
- Always place the product on a smooth and stable surface.
- Do not push any objects into product vents or slots. Do not apply any great force on the product.
- Please keep the product at a room temperature environment. Do not place the product near heat sources (such as radiators, heat registers, stoves, fireplace, or direct sunlight). Do not place the product near any open flame source.
- Do not attempt to service the product by yourself. Always refer to the instructions by qualified service personnel.
- To avoid the risk of electrical hazards, do not expose this product to a wet surfaces.

**Declaration of conformity:**

CE This device meets the essential requirements of the following Directive 2014/53/EU of the European parliament of the council of 16 April 2014.

The waste container symbol with the X through it on the device indicates that the device must be disposed of separately from normal domestic waste at an appropriate waste disposal facility at the end of its useful service life

**Limited Warranty**

1. If within 12 months of purchase this device or any part thereof is proven to be defective by reason of faulty workmanship or defects in materials, we will at our option repair or replace the same free of charge of labor or materials on condition that.
2. The original invoice or sales receipt with the date of purchase, or stamp from the dealer is presented together with the defective unit.
3. The warranty does not cover product failures that have been caused by the use of accessories other peripheral devices which are not DIVOOM branded original accessories intended for use with the product.
4. The warranty does not cover product failures caused by: Modification, repair, and disassembly by any person who is not authorized by the manufacturer. Any defective unit or part shall become the property of the manufacturer. The warranty does not cover any damage caused by misuse, drop, hit or neglect.

**FCC STATEMENT :**

This device complies with Part 15 of the FCC Rules. Operation is subject to the following two conditions:

1. This device may not cause harmful interference, and
2. This device must accept any interference received, including interference that may cause undesired operation.

**Warning:** Changes or modifications not expressly approved by the party responsible for compliance could void the user's authority to operate the equipment.

**NOTE:** This equipment has been tested and found to comply with the limits for a Class B digital device, pursuant to Part 15 of the FCC Rules. These limits are designed to provide reasonable protection against harmful interference in a residential installation. This equipment generates uses and can radiate radio frequency energy and, if not installed and used in accordance with the instructions, may cause harmful interference to radio communications. However, there is no guarantee that interference will not occur in a particular installation.

If this equipment does cause harmful interference to radio or television reception, which can be determined by turning the equipment off and on, the user is encouraged to try to correct the interference by one or more of the following measures:

Reorient or relocate the receiving antenna.

Increase the separation between the equipment and receiver.

Connect the equipment into an outlet on a circuit different from that to which the receiver is connected.

Consult the dealer or an experienced radio/TV technician for help.

**FCC Radiation Exposure Statement:**

This equipment complies with FCC radiation exposure limits set forth for an uncontrolled environment. This equipment should be installed and operated with a minimum distance of 20cm between the radiator & your body.

**PRODUCT WARRANTY CARD**

Product name:.....

Serial number:.....

purchasing store:.....


Purchasing date:.....

Owner Name:.....  
Contact Email:.....  
owner address:.....

Divoom official website: <http://www.divoom.com/>  
Divoom warranty information: <http://www.divoom.com/article/detail/id/60.html>  
Divoom product FAQ: <http://www.divoom.com/article/detail/id/59.html>  
Divoom support Email: [support@divoom.com](mailto:support@divoom.com)  
Divoom support contact number: **0755-29494509**

**Divoom repair & return address:**  
Shenzhen Divoom Technology Limited Corporation 1st Floor, 5th Building, XinLianHe Industrial Complex Shajing Town, Baoan District Shenzhen City, Guangdong Province  
518000 The people's republic of China

## Documents / Resources

	<p><a href="#">Shenzhen Divoom Technology PIXOO64 Pixoo 64 with WiFi</a> [pdf] User Guide PIXOO64, A8IPIXOO64, PIXOO64 Pixoo 64 with WiFi, Pixoo 64 with WiFi</p>
---	---