



# Shenzhen Daping Computer DP-WG001 WiFi Wireless Garage Door Controller User Guide

[Home](#) » [Shenzhen Daping Computer](#) » Shenzhen Daping Computer DP-WG001 WiFi Wireless Garage Door Controller User Guide 



## SHENZHEN

Smart Garage



## Contents

### [1 WARNING](#)

### [2 WHAT'S IN THE BO](#)

### [3 COMPATIBILITY CHECK](#)

### [4 INSTALLATION](#)

#### [4.1 Installation Overview](#)

### [5 Quick Guide of Using Siri to Control Smart Devices](#)

### [6 A quick guide to link Smart Life account to Google Home](#)

### [7 A quick guide to link Smart Life account to Amazon Alex.](#)

### [8 Documents / Resources](#)

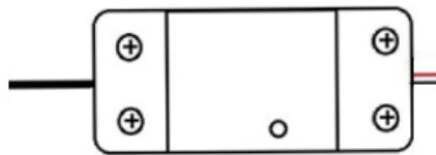
### [9 Related Posts](#)

## WARNING

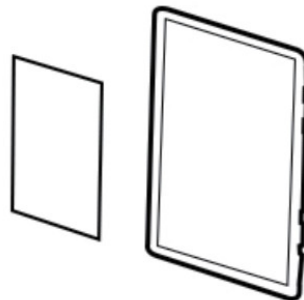
### TO PREVENT SERIOUS INJURY FROM YOUR MOVING GARAGE DOOR OR GATES:

- DO NOT let children use Smart Garage Door Opener products and apps without adult supervision.
- ONLY operate your Smart Garage Door Opener device when you are in clear view of your garage or gate, and you have verified that there are no objects are obstructing the operation of the door. ),.
- ALWAYS wait for the garage door or gate to be completely closed.

## WHAT'S IN THE BO



**Smart Garage Controller**



**Magic Tape**



**Sensor Mounting Bracket**



**Wireless Door Sensor**

## COMPATIBILITY CHECK

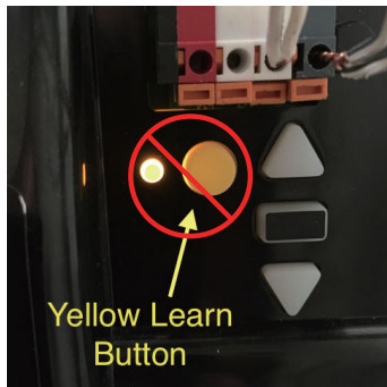
### Verify the Smart Garage Door Controller works with your garage door

1. Look for your garage door opener on the included "Garage Door Compatibility Guide".

Garage door openers with yellow / purple learn buttons will likely NOT work.

2. Manually ensure your garage door opener is compatible with the Smart Garage Door Controller.

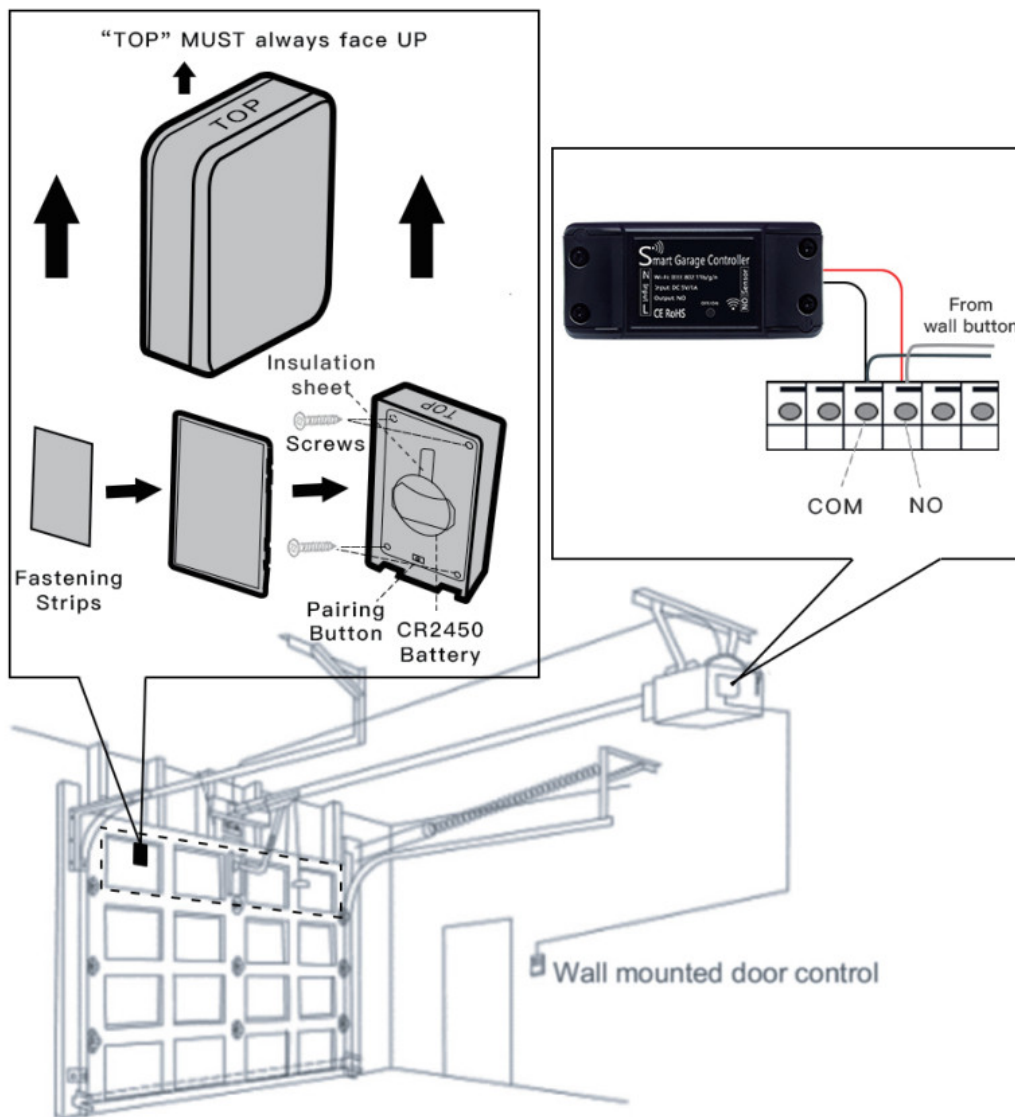
Follow the wires from the wall-mounted garage controller to your garage door opener. Where the wall-mounted garage door controller wires connect to the opener, use a needle nose plier or paperclip to touch the two garage door opener terminals together.



- If the garage door opens or closes, the Smart Garage Door Controller is compatible with your garage door opener; these will be the terminals the Smart Garage Door Controller will plug into.

## INSTALLATION

### Installation Overview



## 1. Check your Wi-Fi

Check the Wi-Fi signal in the garage, where the Smart Garage Controller will be mounted 4 to 5 feet away from the garage door opener.

If your Wi-Fi is SGHz, please set it to be 2.4GHz.



## 2. Download the APP



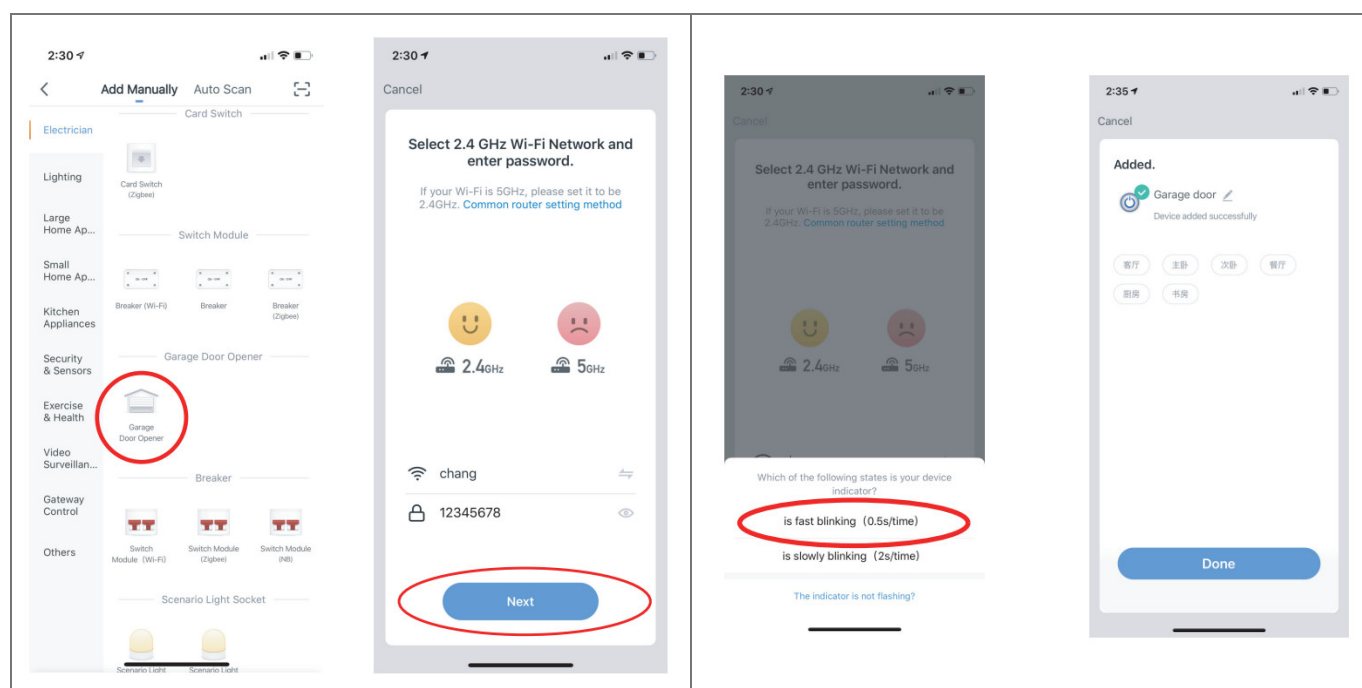
Install the “Tuya Smart” or “Smart Life” app on your mobile phone from the Apple app store or Google Play store.

### 3. Power up your device

Find a convenient location and power the Smart Garage Controller by plugging it in. The blue LED will start blinking.

### 4. Add device in the APP

Launch the app and Tap the icon “+” on the right top to add a device. Select “Electrician”, then select “Garage Door Opener”. Connect to your Wi-Fi network, enter a password, then select “Next”. . Tap “is fast blinking (0.5s/time)”, it will auto-connect with the device.

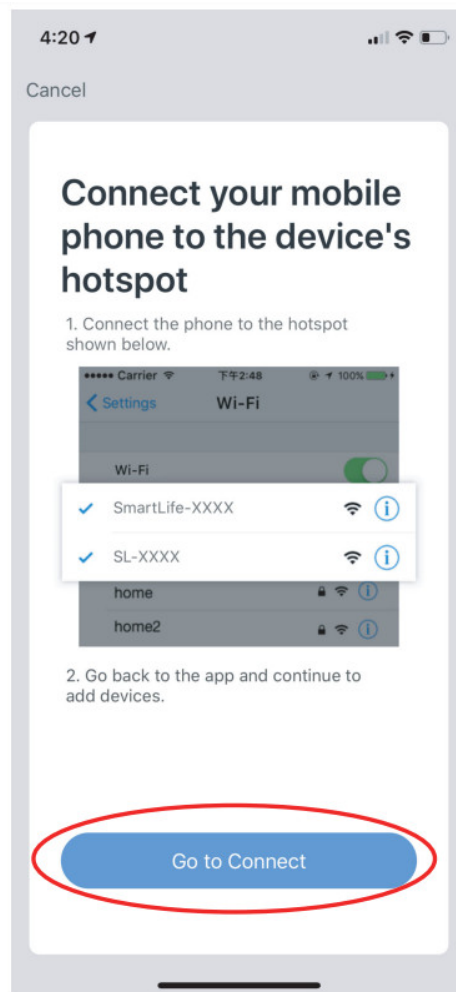
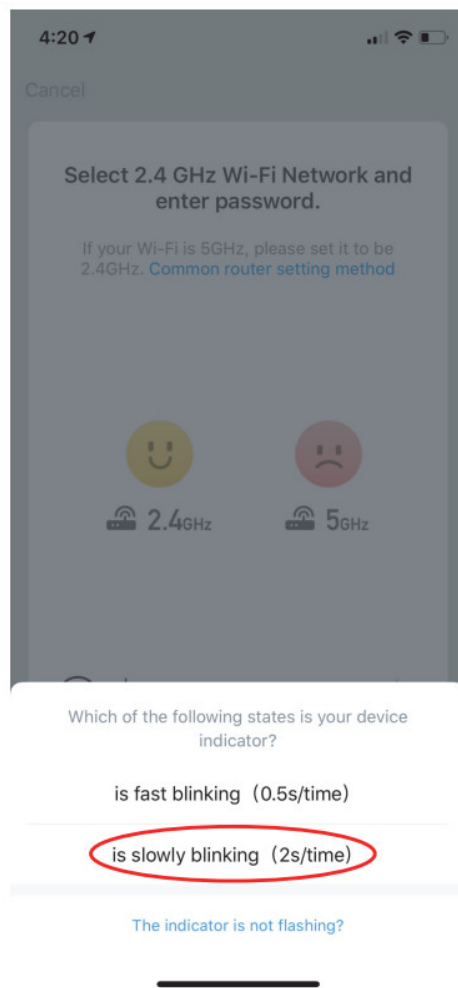


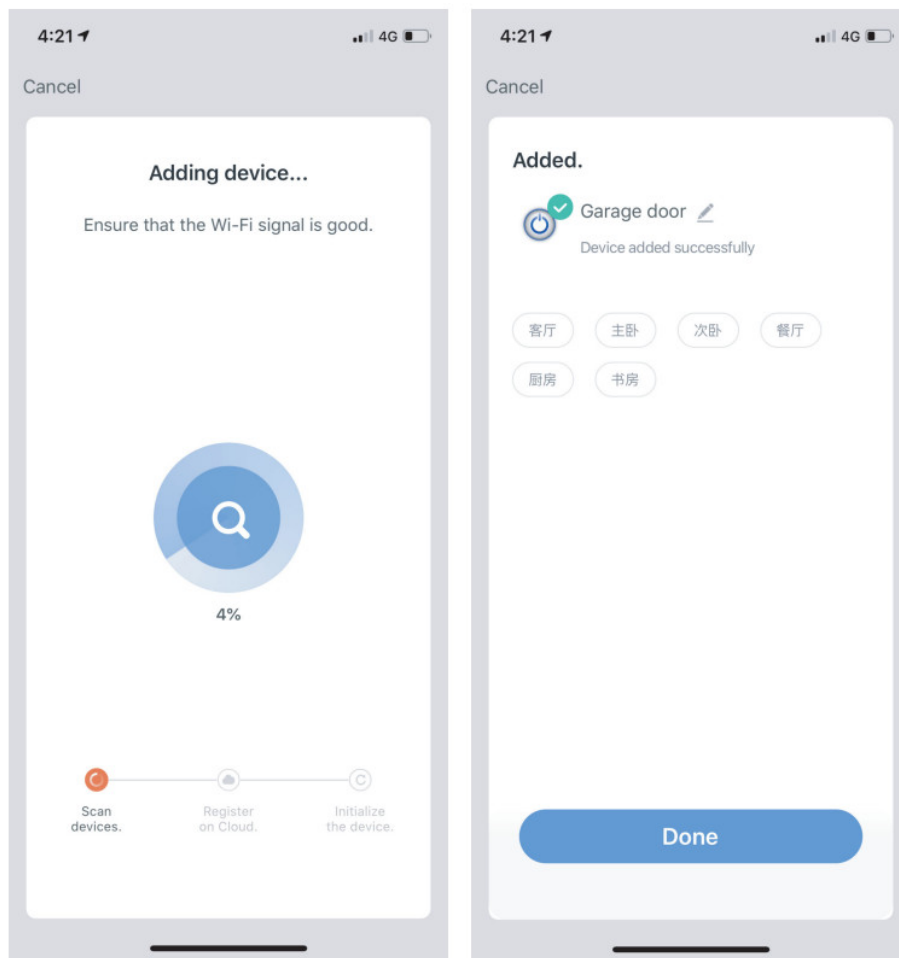
**Note:(AP Mode Connection)** If the connection failed under a normal connection, it maybe is a network problem. You can now be connected with the following steps:”AP MODE ”

- Press the “on/off” button for 8 seconds and make sure your device’s light is flashing slowly.
- Tap the icon “+” on the right top, Select “Electrician”, then select “Garage Door Opener”. Connect to your Wi-Fi network, enter a password, then select “Next”.
- Tap “is slowly blinking (2s/time)”, then tap Go to Connect
- Now, you will see the mobile phone WIFI. There will be a connection option: “Smartlife-XXX”, select it. In the

tap that your wifi is already connected to, it will state,"Smartlife-XXX" on it and return to"Smart life" The APP Screen, and you will see the connection percentage.

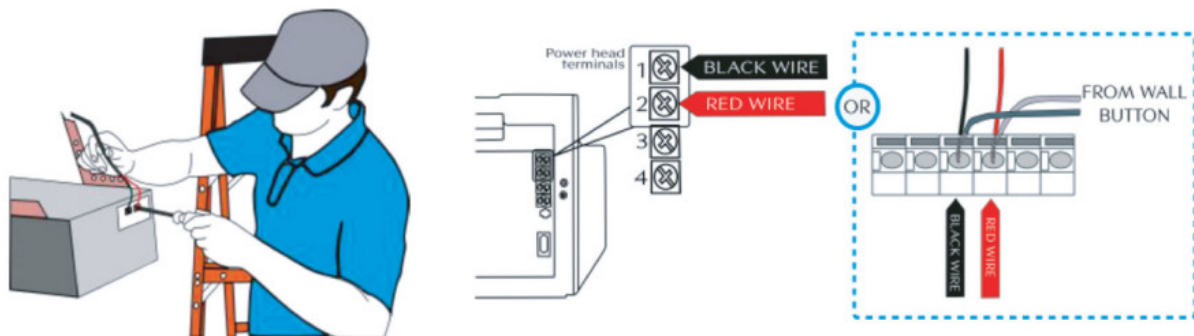
- Waiting until the connection is successful.





## 5. STEP 1: Connect Controller to Opener

- > Locate the 2 exposed wires coming out of the Controller
- > Insert the 2 exposed wires into the terminals on the back of your Garage Door Opener



## 6. STEP 2 : Install the Door Sensor

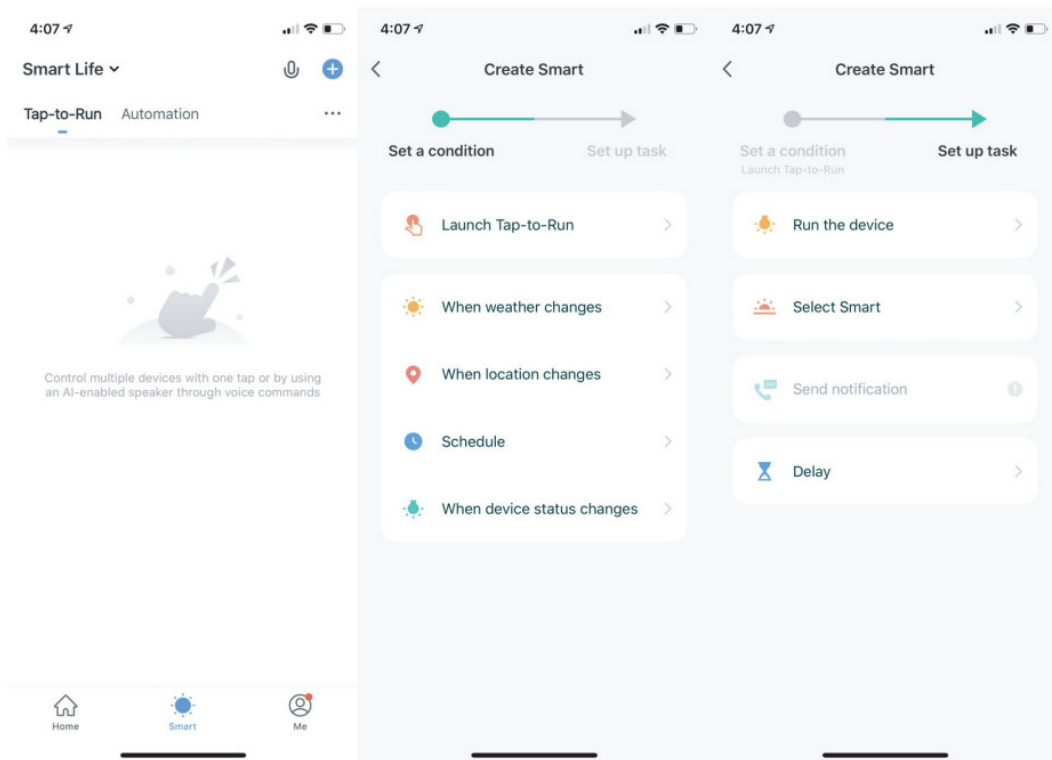
- > Remove the pull tab from the sensor to activate the battery.
- > Install the door sensor to a clean and dry location on the top panel of the garage door using the fastening strips, or provided hardware.

- **Note:** If using screws, only install solid wood or insulated doors. DO NOT drill through the door.

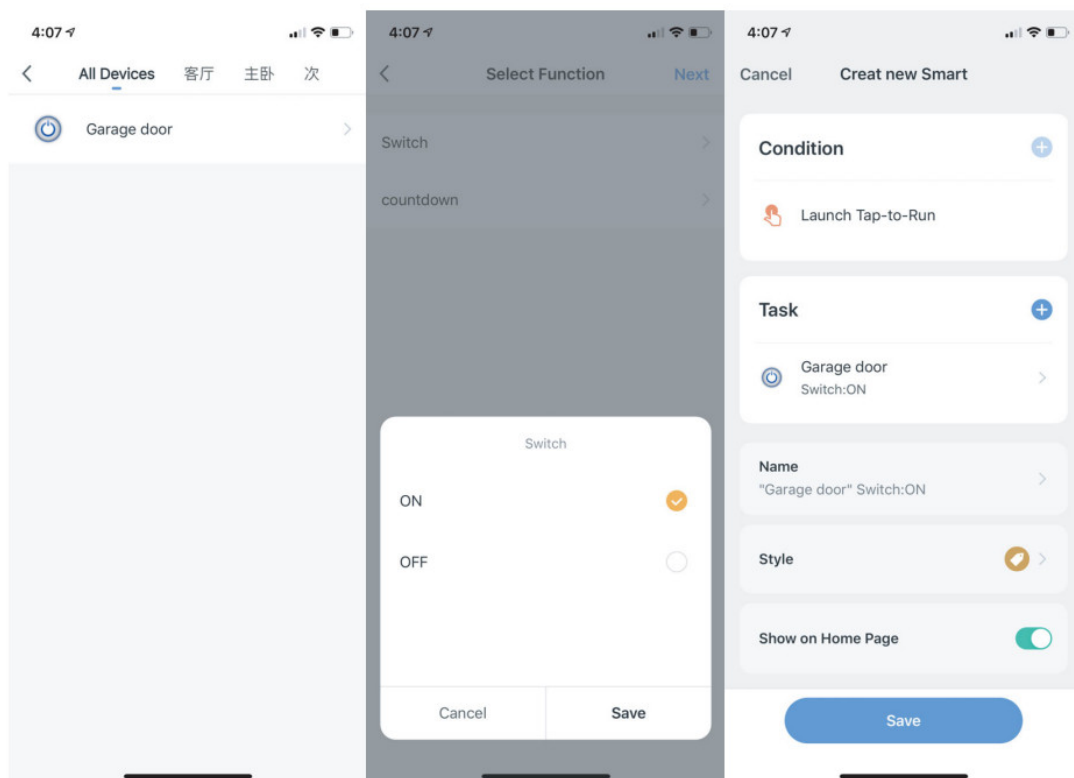
After installation, the wireless sensor does not respond and the APP does not notify. Please follow the steps below: 1) Please single click 5 times on the on/off button of the controller, the red and blue lights flash alternately 2) Open the wireless sensor and click on the button inside



## Quick Guide of Using Siri to Control Smart Devices

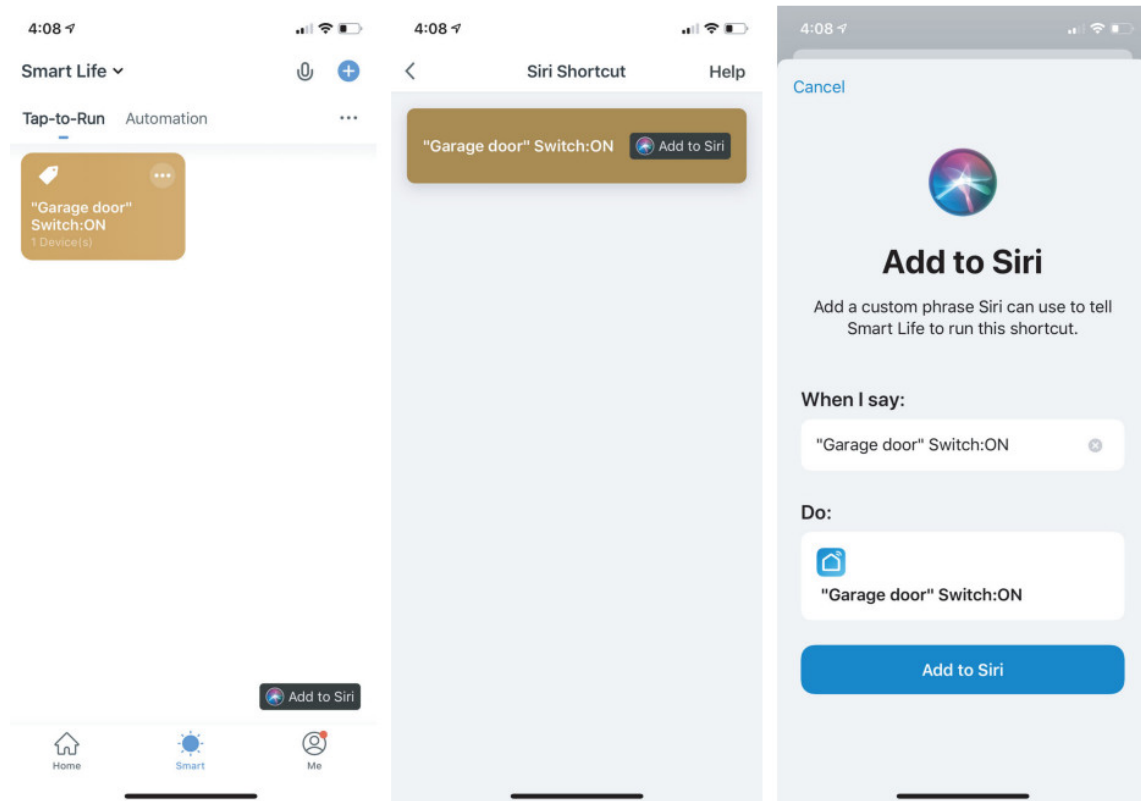


1. Log in to the “Smart life” app, select “Smart” at the bottom
2. Tap “+”, select “Launch Tap To Run”, select “Run the device”



3. Select “Garage door”, tap “switch”, then select “ON”, click “Save”, and click “Save” again.



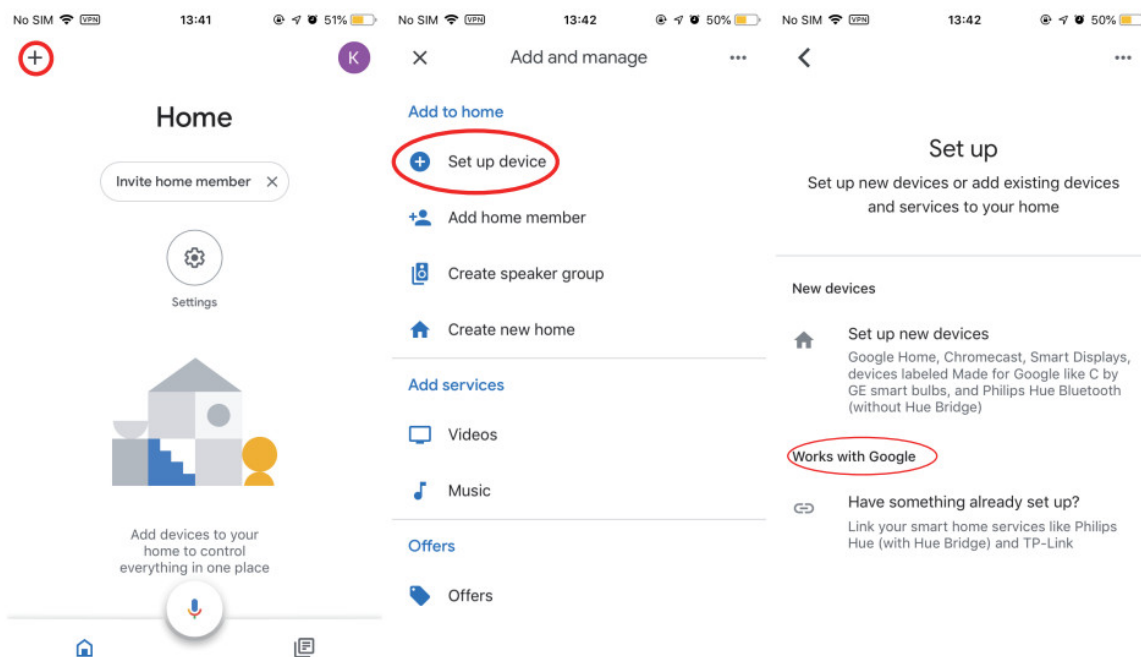


4. Back to the “Smart” page, tap the “Add to Siri” icon at the right bottom. Select the tab “Garage door” switch: ON.
5. Select Add to Sid. Now you can say the magic word “Open the garage door”.

## A quick guide to link Smart Life account to Google Home

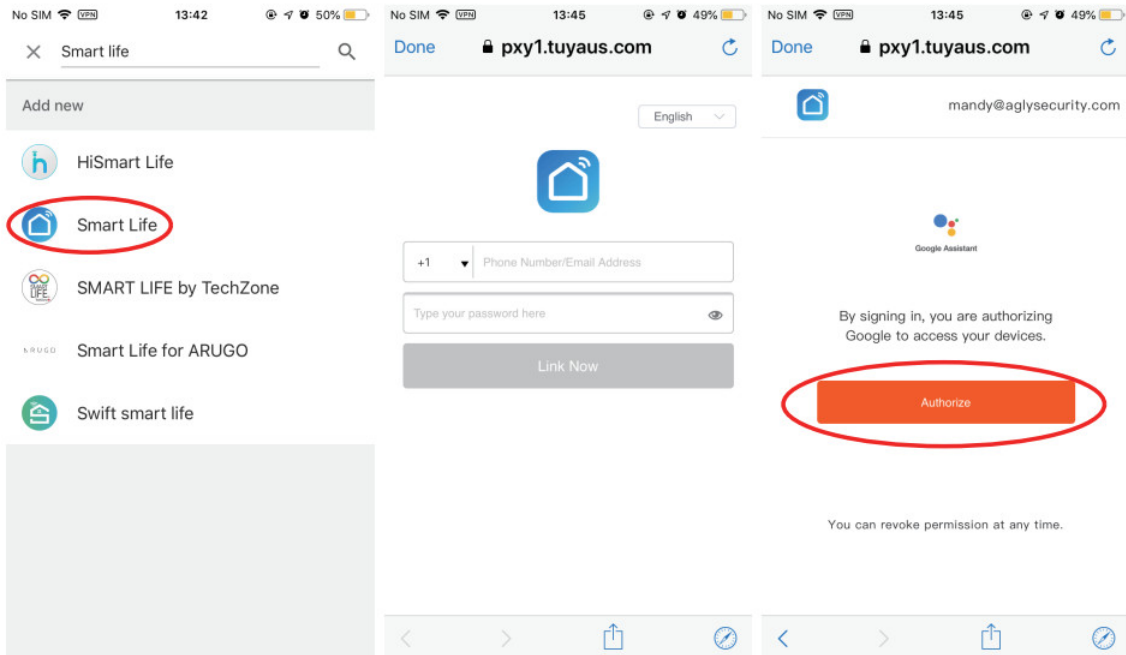
### Before linking Smart Life to Google Home:

1. Launch the “Google Home ” app, tap on the menu in the upper left corner. Go to “Set up device”. Then select “Works with Google”



2. Enter “Tuya Smart” or “Smart Life” in the search field and search.
3. Tap”Tuya Smart” or “Smart Life”, Enter your account information and Tap on ” Link now” to link your account to your google home account.

4. If your account is a phone number, you should select your country, If your account is in an email address, please select a random country/region code.
5. Select “Authorize” that you are authorizing Google to access your devices.



#### Voice commands:

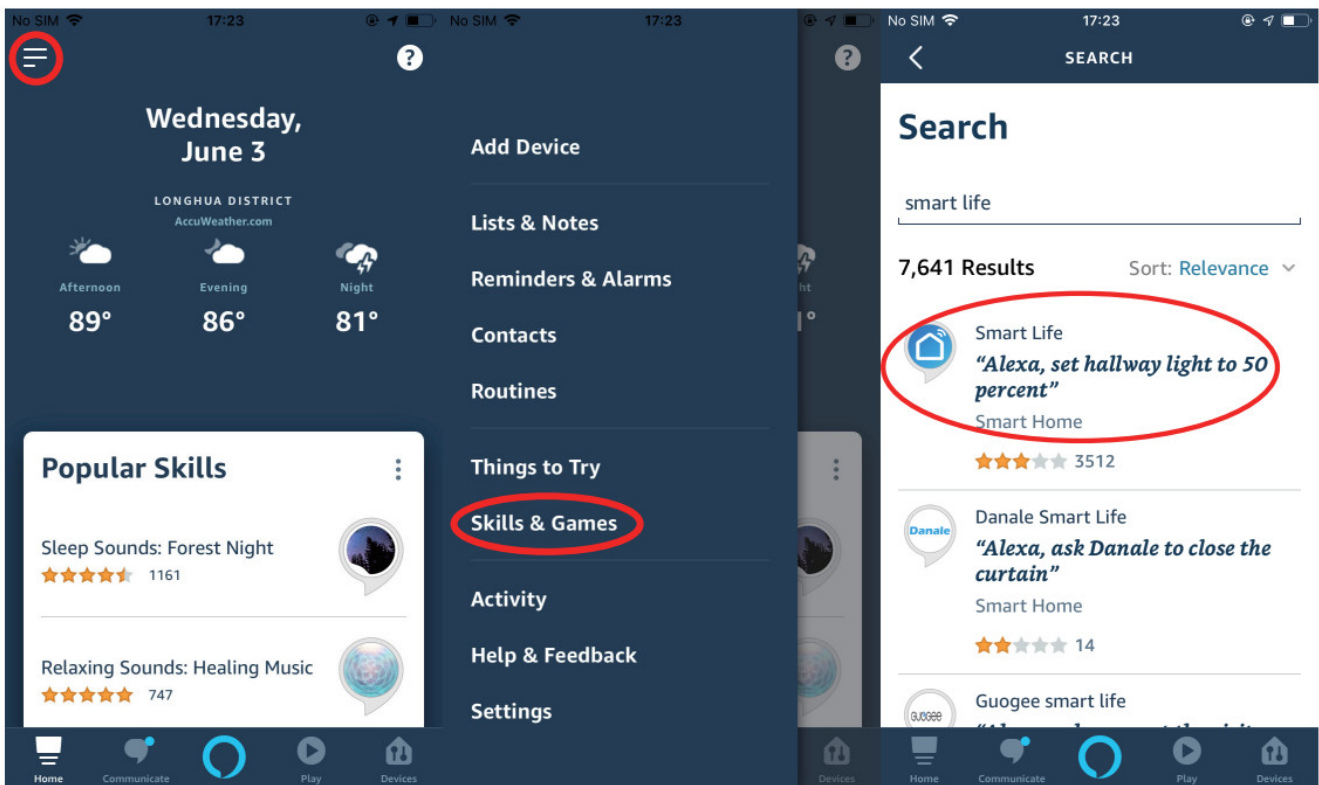
- “Hey Google, open my {device name}”.
- “Can I have your security code?”
- “{One two x x}”
- “Hey Google, close my {device name }”
- “Hey Google, is my{device name}opened / closed”



#### A quick guide to link Smart Life account to Amazon Alex.

##### Before linking Smart Life to Amazon Alexa:

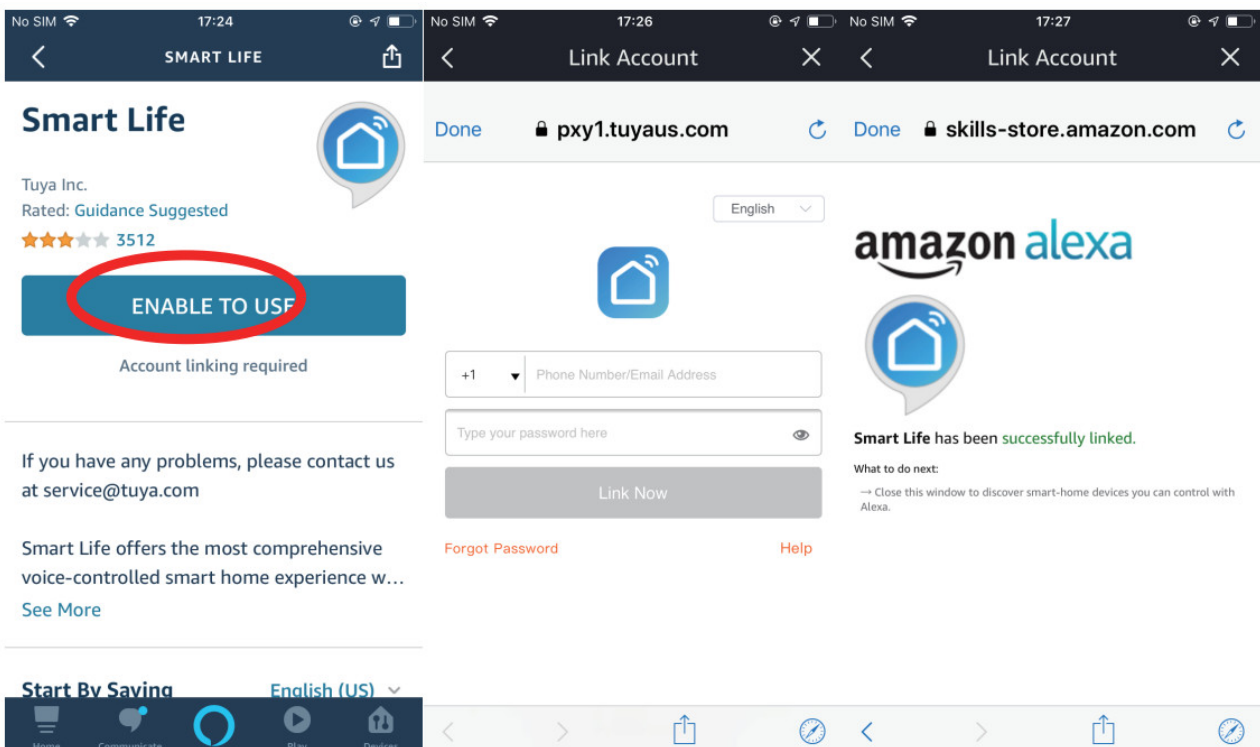
1. Launch the “Amazon Alexa” app, tap on the menu in the upper left corner. Go to “Skills & Games”.
2. Enter “Tuya Smart” or “Smart Life” in the search field and search.



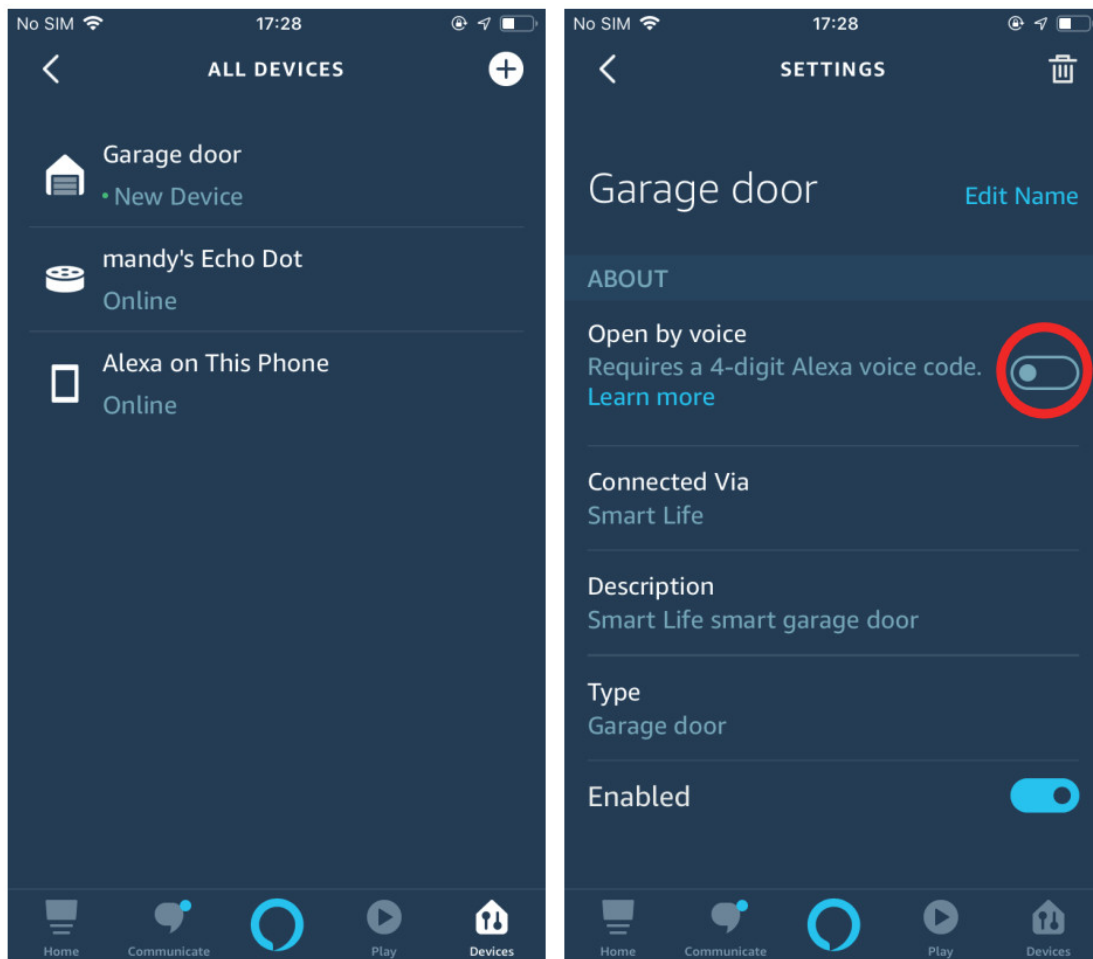
3. Tap "Tuya Smart" or "Smart Life", Enter your account information, and tap on "ENABLE TO USE" to link your account to your Amazon account.
4. If your account is a phone number, you should select your country, If your account in an email address, please select a random country/region code.

#### Voice commands:

"Alexa, Open{device name}"  
 "Can I have your security code?"  
 "{One two x x}"  
 "Alexa, Close{device name}"  
 "Alexa, is my{device name} opened / closed?"



**More Setting:** Create a code to open by voice, then enter ALL DEVICES to select garage door. Setting the voice command, which you can perform a series of actions.



**FCC Warning:**

This equipment has been tested and found to comply with the limits for a Class B digital device, pursuant to part 15 of the FCC Rules. These limits are designed to provide reasonable protection against harmful interference in a residential installation. This equipment generates, uses, and can radiate radio frequency energy and, if not installed and used in accordance with the instructions, may cause harmful interference to radio communications. However, there is no guarantee that interference will not occur in a particular installation. If this equipment does cause harmful interference to radio or television reception, which can be determined by turning the equipment off and on, the user is encouraged to try to correct the interference by one or more of the following measures:

- Reorient or relocate the receiving antenna.
- Increase the separation between the equipment and receiver.
- Connect the equipment into an outlet on a circuit different from that to which the receiver is connected,
- Consult the dealer or an experienced radio/TV technician for help.

**Caution:** Any changes or modifications to this device not explicitly approved by the manufacturer could void your authority to operate this equipment.

This device complies with part 15 of the FCC Rules. Operation is subject to the following two conditions: (1) This device may not cause harmful interference, and (2) this device must accept any interference received, including interference that may cause undesired operation. This equipment complies with FCC radiation exposure limits set forth for an uncontrolled environment. This equipment should be installed and operated with a minimum distance of 20cm between the radiator and your body.

<div>Smart Garage</div> <div></div>	<div><a href="#">Shenzhen Daping Computer DP-WG001 WiFi Wireless Garage Door Controller</a> [pdf] User Guide</div> <div>DP-WG001, DPWG001, 2AYOK-DP-WG001, 2AYOKDPWG001, DP-WG001 WiFi Wireless Garage Door Controller, WiFi Wireless Garage Door Controller</div>
----------------------------------------------------------------------------------------------------------------------	--------------------------------------------------------------------------------------------------------------------------------------------------------------------------------------------------------------------------------------------------------------------