



# Shenzhen Chengxian Optoelectronics Technology CX16A LED Display User Manual

[Home](#) » [Shenzhen Chengxian Optoelectronics Technology](#) » Shenzhen Chengxian Optoelectronics Technology CX16A LED Display User Manual 



## SHENZHEN

LED Display  
User's Manual

### Contents

- [1 CX16A LED Display](#)
- [2 Smart phone operating instructions](#)
- [3 Computer software operation instructions](#)
- [4 Chapter II How to add a new program](#)
- [5 FCC Requirement](#)
- [6 Documents / Resources](#)
  - [6.1 References](#)
- [7 Related Posts](#)

## CX16A LED Display

Thank you for using this LED display of our company. In order to let you experience the product swimmingly, detailed instruction is provided and you can find the product's introduction. Before using this product, please read the manual carefully, so that you can correctly use it. In case if any printing or translation errors, we apologize for the inconvenience. As for the content change, we are sorry for the further notice.

## Smart phone operating instructions

**The steps to install FKshow are as follows:**

**Step 1.** Scan the QR code to download the mobile phone software.

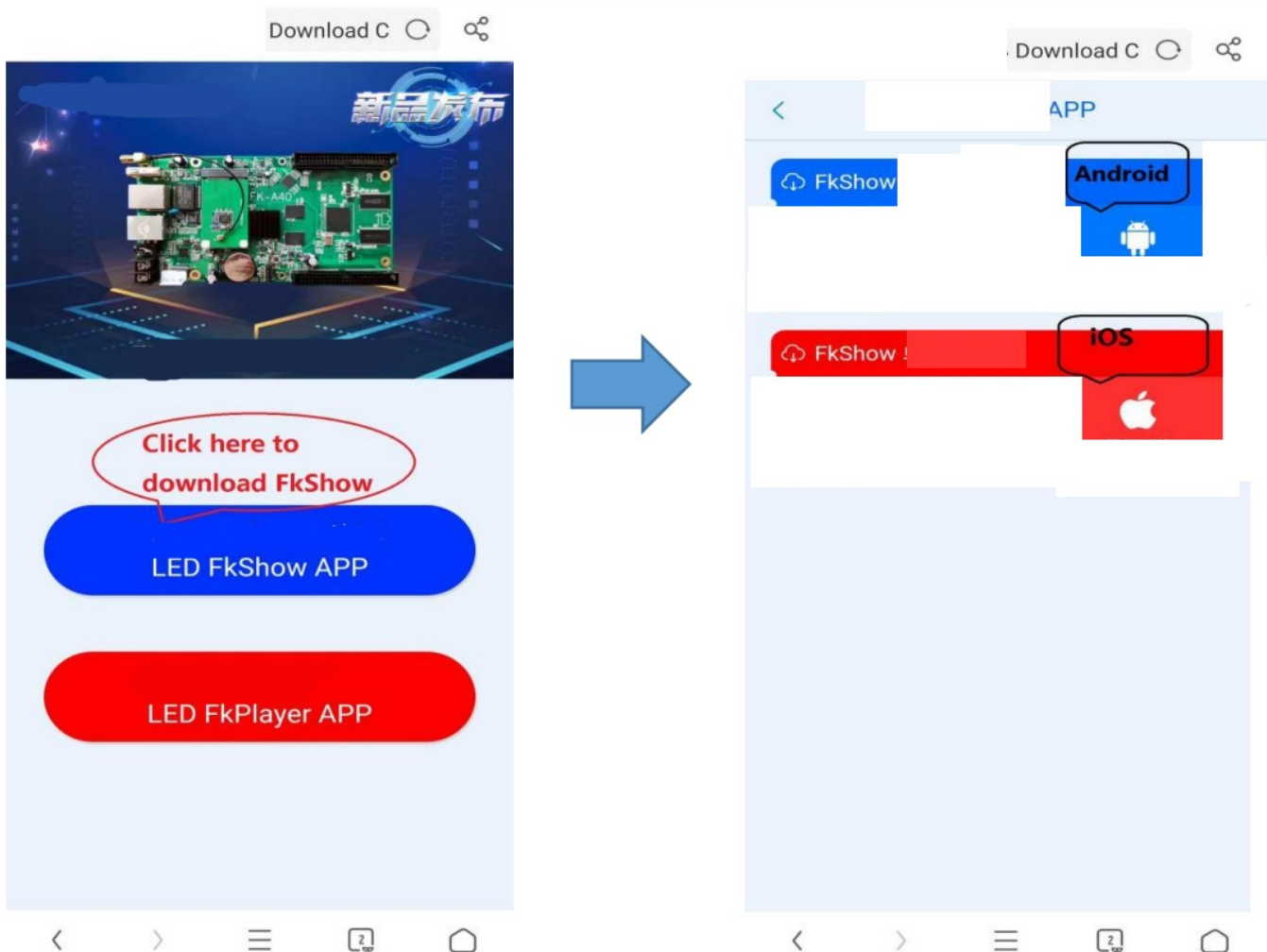


<http://www.fk189.com/apk.html>

Can also download via this link:

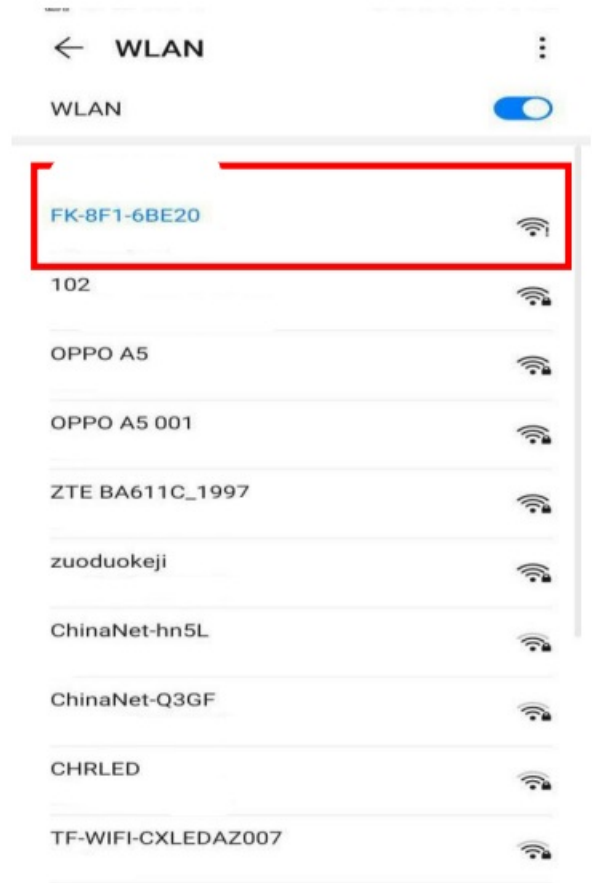
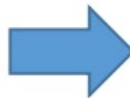
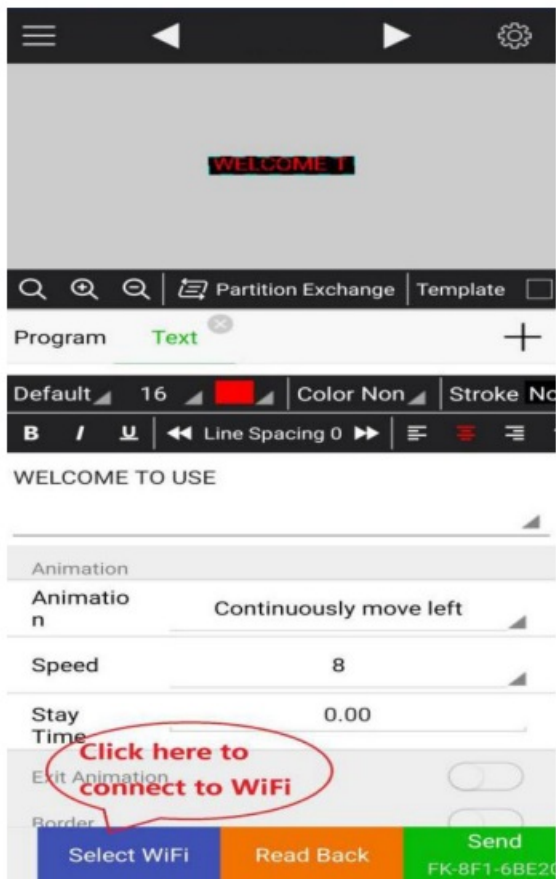
<http://www.fk189.com/double.html?t=1593657205389>

**Step 2.** Scan the QR code and open it in the browser, this interface will appear:

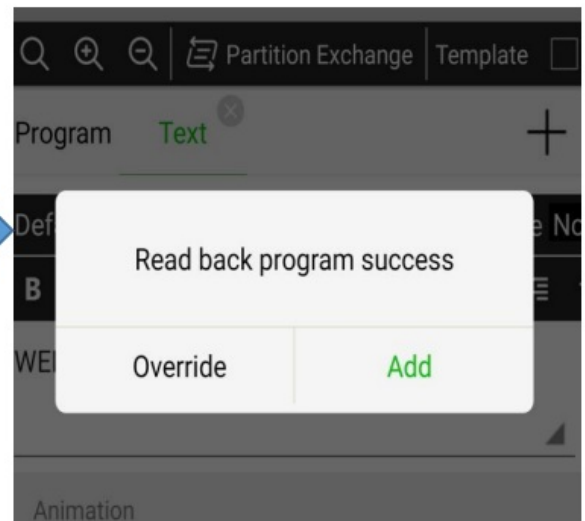
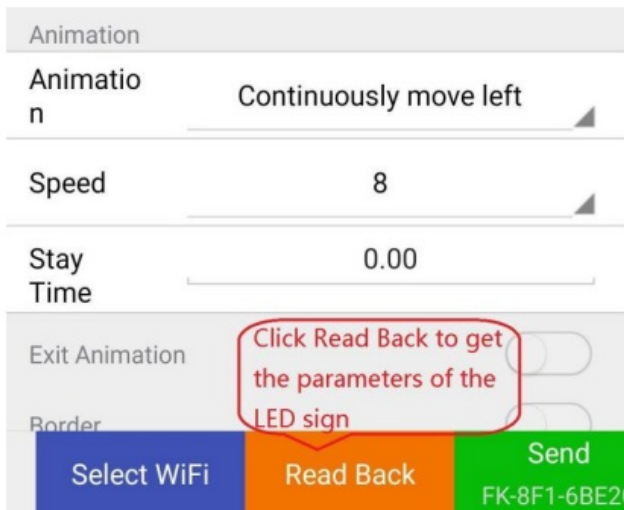


### The steps to edit the program

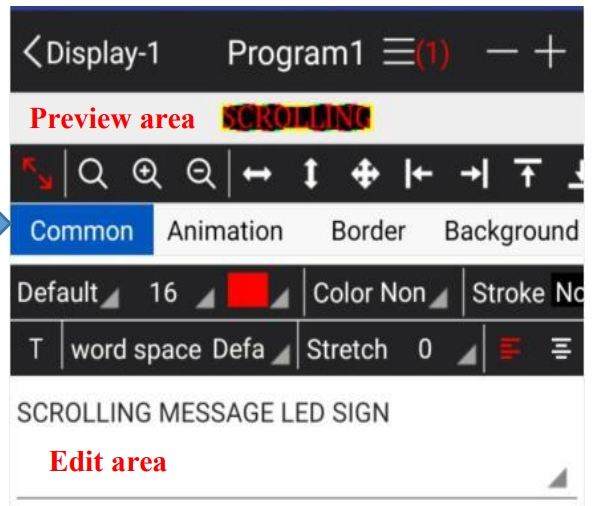
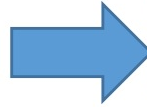
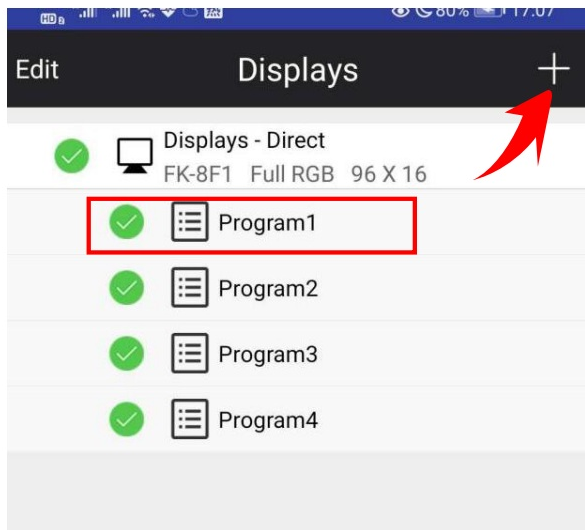
**Step 1.** Power on the LED SIGN, and Click "Select WiFi" to find the WiFi name device that begins with an "FK" character and connect it, Default password is 88888888 connect to the WiFi, and then return to the APP.



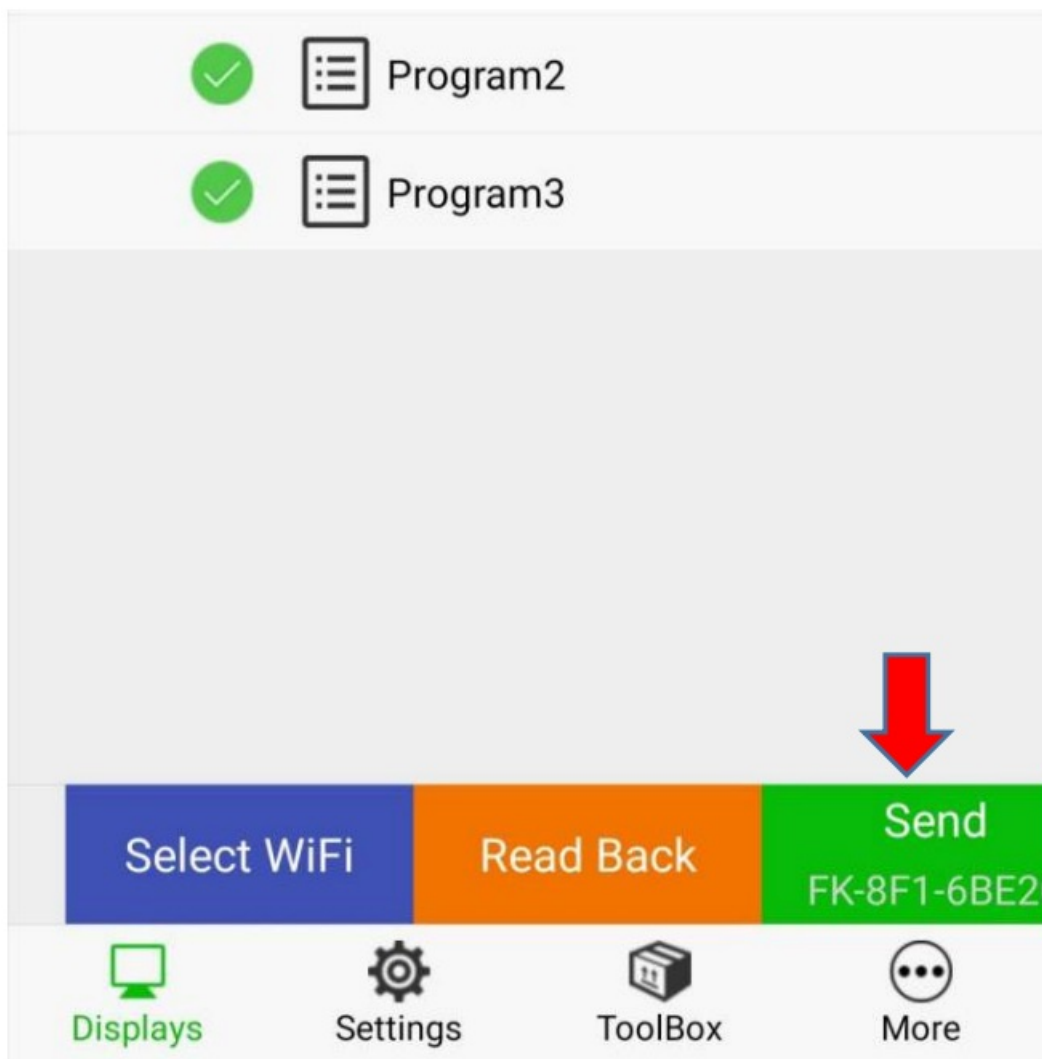
**Step 2.** Click Read Back to get the parameters on the LED sign (This step is the most important), then click “Add” on the message box to overwrite the parameters.



**Step 3.** Press and hold the program can delete it. Click the “+” button to add the program on the display page, then click the program to enter the editing page.



**Step 4.** After editing, Return to the “Display” page then click “Send” to send the programs to the led sign.



If you are prompted that the password is too simple and needs to be changed, please set a new password according to the prompt. After setting it, please use the new password to connect to the control card WiFi to resend

## Computer software operation instructions

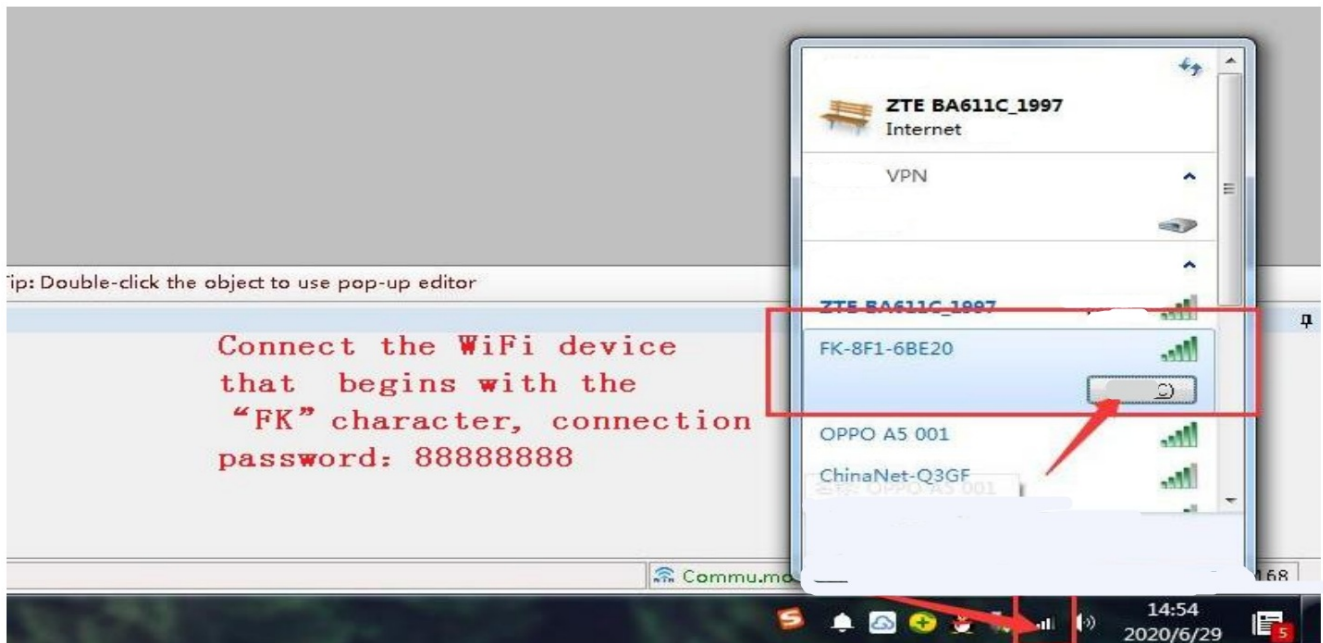
Official download address: [www.fk189.com](http://www.fk189.com)

Download  computer software through this link

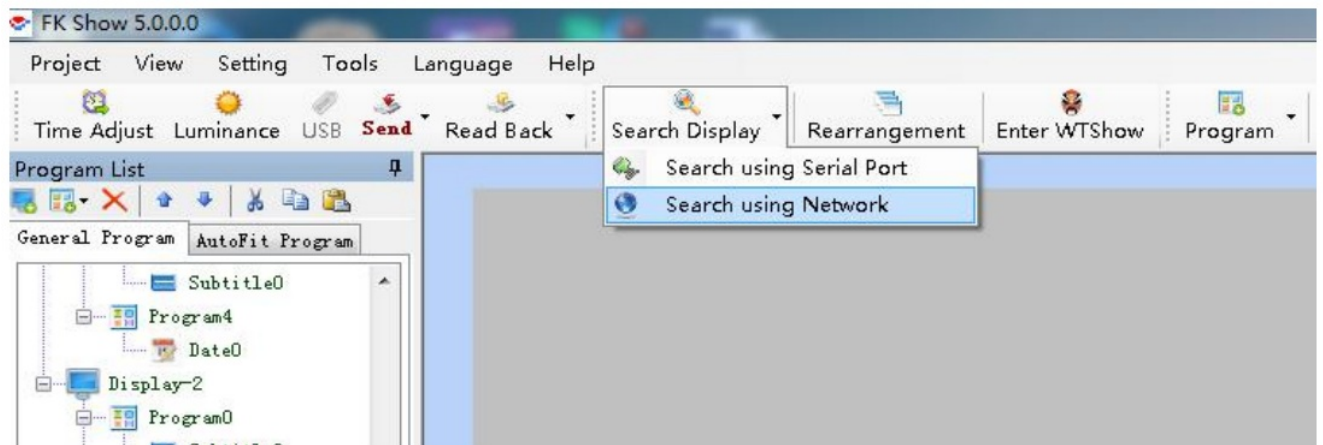
<http://www.fk189.com/uploads/soft/fksoft/FKShow4.0.Win7Setup.zip>

## Chapter I How to get parameters

1. Power on the led sign, and connect the WiFi device that begins with the “FK” character first on your computer, the connection password: is 88888888

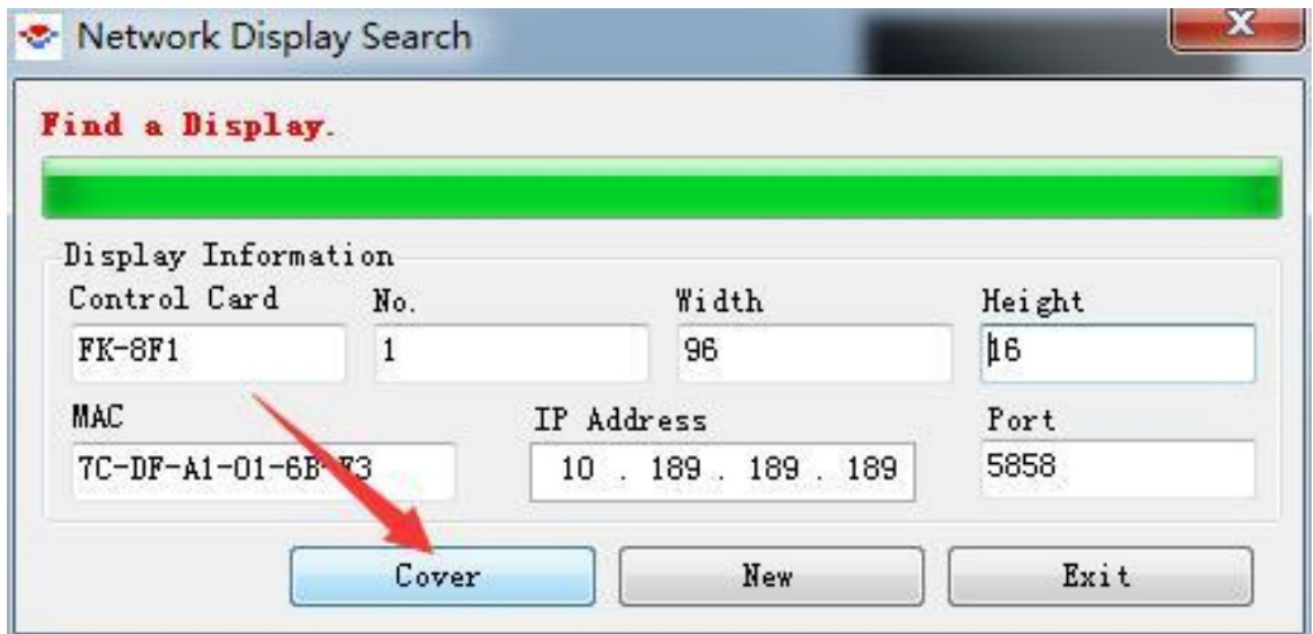


2. Run the software, Click the “Search Display” button at the top right of the software and select “Search using Network”.

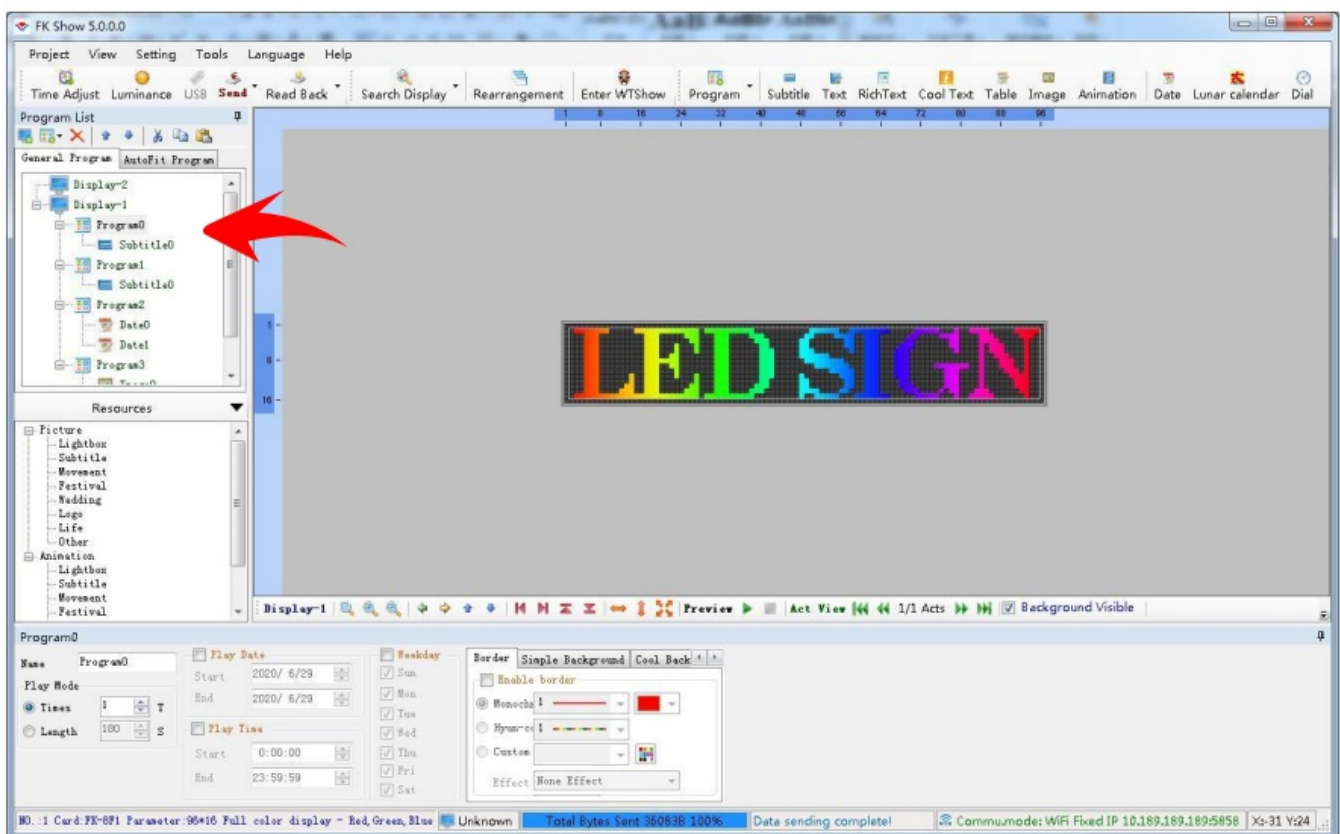


3. After completing the search, click “Cover” to import the display information into the software



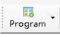
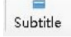


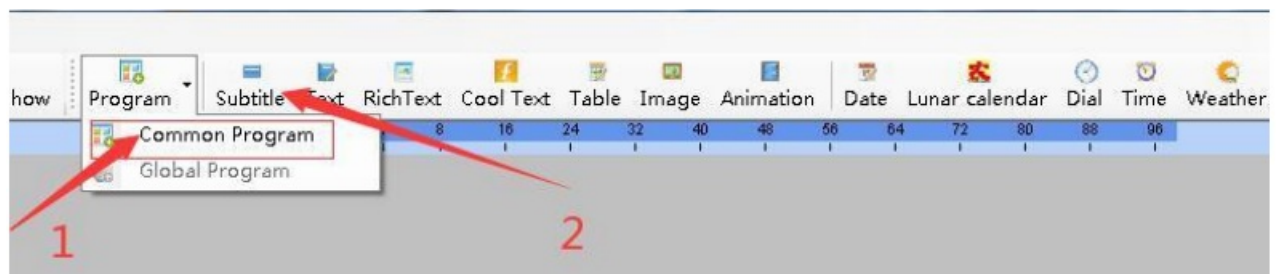
4. In the Program list, the user can delete the original program by right-clicking the program and select “Delete Program”, or can modify the original program also can add a program freely



## Chapter II How to add a new program

### Add a Subtitle program

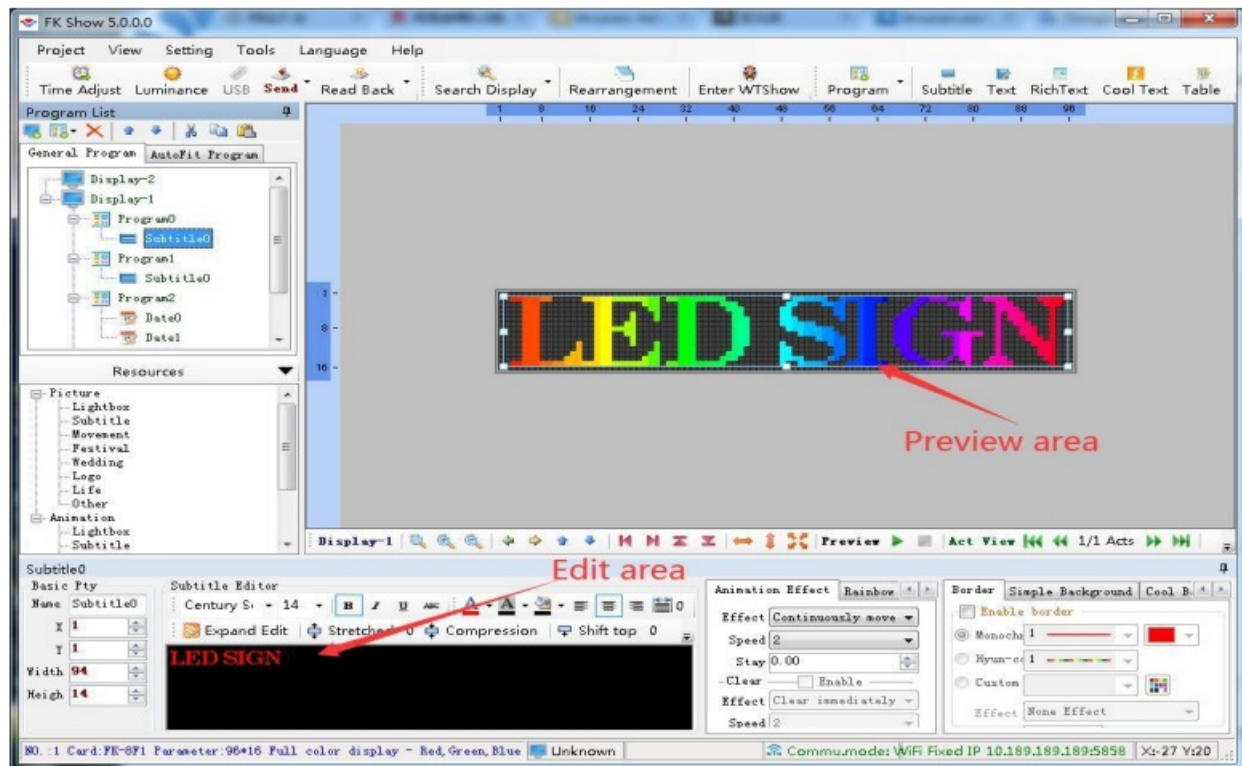
1. Click the program icon  choose a common program, then click subtitle icon  in the toolbar to add one subtitle.



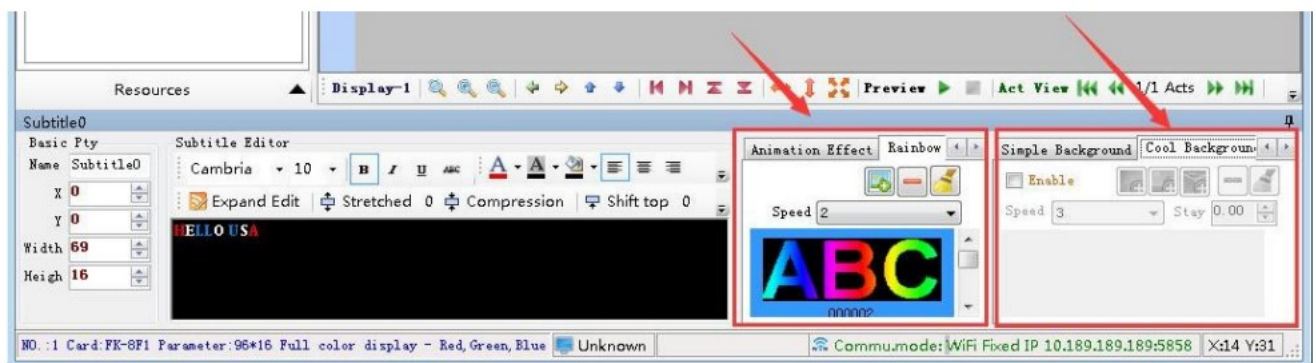
Users can key in text in the black editing area, and can also change the font, size, bold, italic, underline, color, paragraph, left alignment, middle alignment, right alignment, character space, etc. Users can click the “+” button



to expand the preview area to better view the edited content

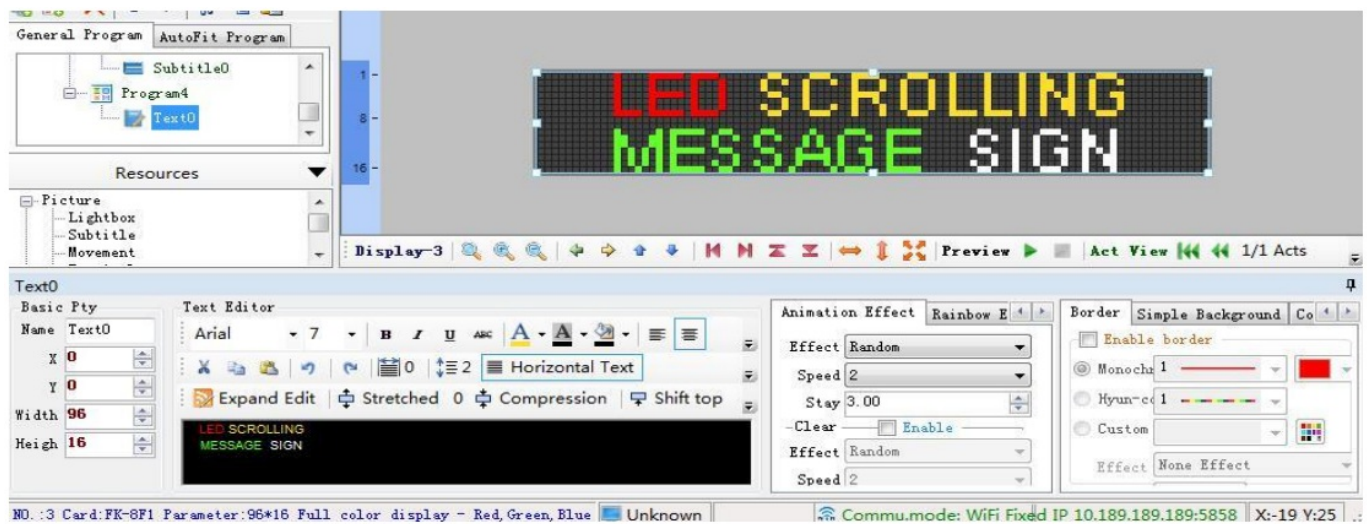


More display effects can be selected on the right side of the editing area, animation effects, rainbow effects, backgrounds, etc.





### Add a Text program

Click the program icon and then the Text button in the toolbar to add one text, Text means multi-row text. If you need two or more lines of display, you can choose “text”, if you want to display on a single line, then choose subtitles. The text is edited in the same way as the subtitles



## Add a time program

1. Click the program icon  and  then the date icon in the toolbar to add one date program. The operation window is as follows:



1. Date format Pick if to show the date and set the format.
2. Time format Pick if to show the time and set the format.
3. Week format: Pick if to show the week and set the format.



4. To choose what to be shown, year, month, date, hour, minute, and second.



5. Can set the time zone.



6. to show the division in a single line or multi-line.

7. Text: Add text before the date according to the user's need.

8. Font: To set the font, size, color, etc. properties.

## Text box partition

If users want to add two or more items in the same program, they need to partition the two text boxes to prevent overlapping. User can directly use the mouse to adjust the text box





### Time adjust

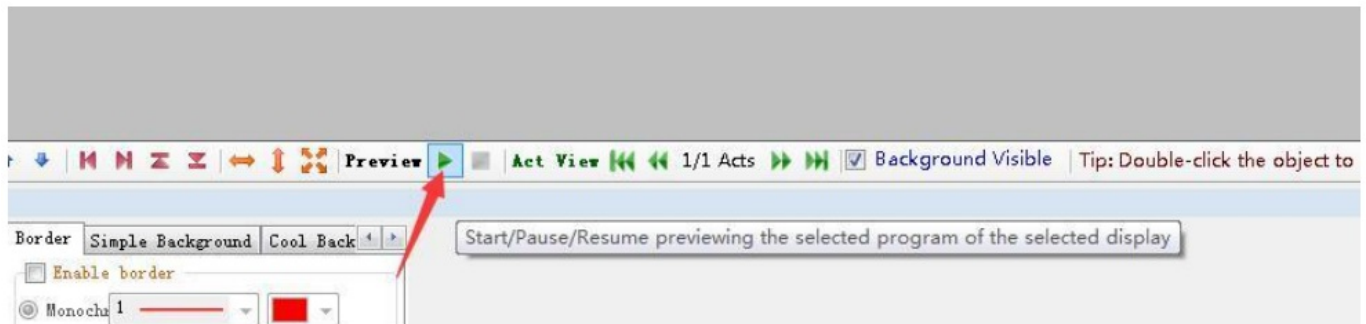
Users can click “Time adjust” on the upper left of the software to adjust the time

### Luminance adjust

Click the button on the upper left of the software to adjust the brightness of the program display

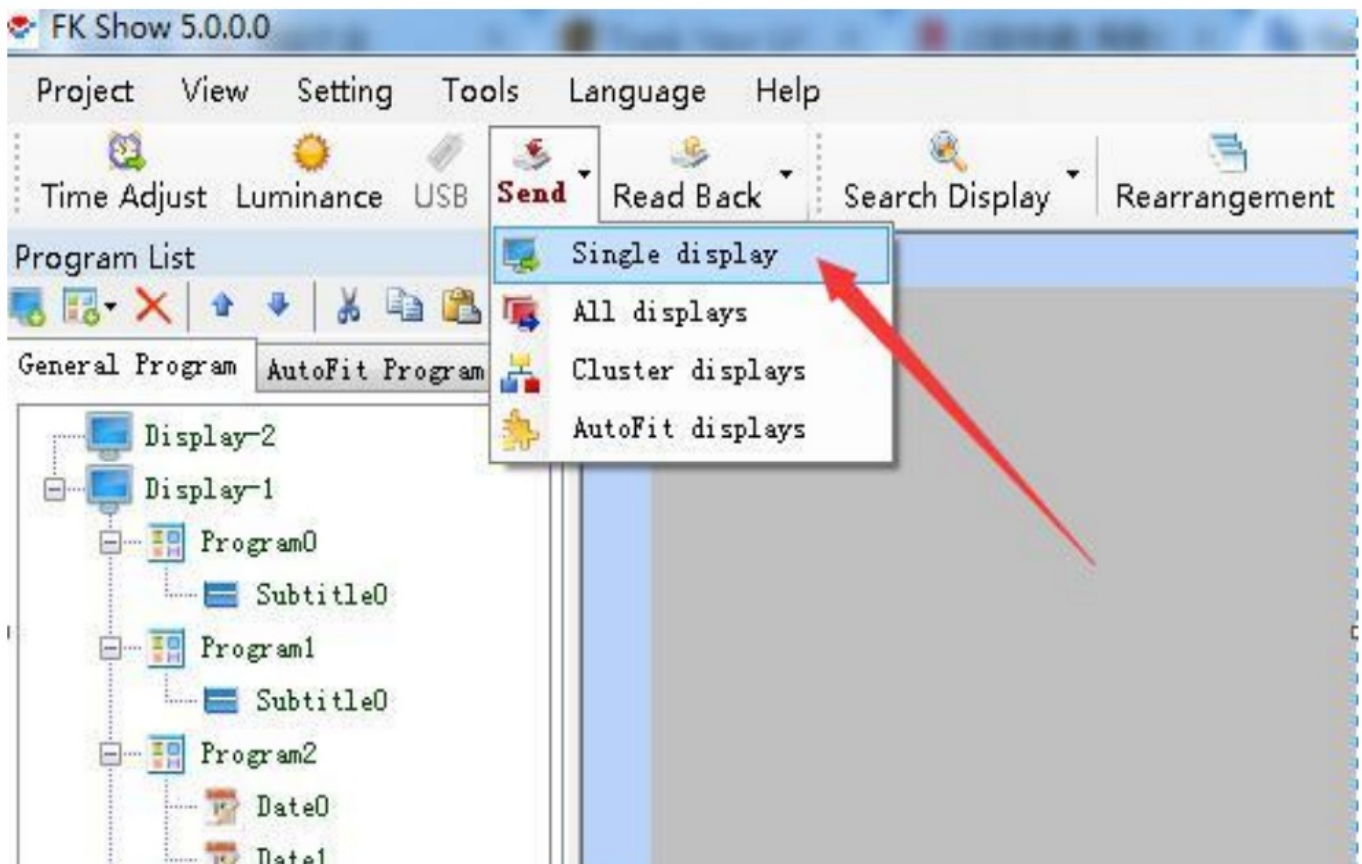
### Preview

After editing, click the preview button to preview the program

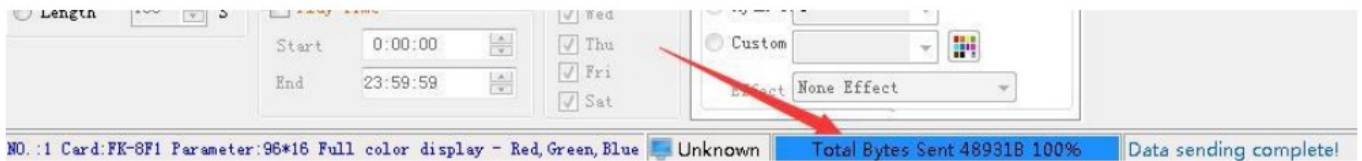


## Chapter III Send Program to LED Sign

Click the “Send” icon and choose the single display to send the programs to the LED sign Before sending, please make sure that the WiFi connection of the computer is the WiFi of the LED Sign



You can check the sending status at the bottom left of the software



### Notice

Dear friends,

Thank you for purchasing our products, here are some action items please note:

1. The product voltage is 110 V
2. The product only supports the WIFI sending program, not a USB
3. When using the software for the first time, please import display parameters through wifi before editing the program. For details, please refer to "How to get parameters" in the manual
4. If you have any questions about the product, please contact us directly through the email on the business card, we will solve the problem for you in time, thank you!

### FCC Requirement

changes or modifications not expressly approved by the party responsible for compliance could void the user's authority to operate the equipment.

This device complies with Part 15 of the FCC Rules. Operation is subject to the following two conditions:

1. this device may not cause harmful interference, and
2. this device must accept any interference received, including interference that may cause undesired operation.

**Note:** This equipment has been tested and found to comply with the limits for a Class B digital device, pursuant to Part 15 of the FCC Rules. These limits are designed to provide reasonable protection against harmful interference in a residential installation. This equipment generates, uses, and can radiate radio frequency energy, and if not installed and used in accordance with the instructions, may cause harmful interference to radio communications. However, there is no guarantee that interference will not occur n a particular installation. If this equipment does cause harmful interference to radio or television reception, which can be determined by turning the equipment off and on, the user is encouraged to try to correct the interference by one or more of the following measures:

- Reorient or relocate the receiving antenna.
- Increase the separation between the equipment and the receiver.
- Connect the equipment to an outlet on a circuit different from that to which the receiver is connected.
- Consult the dealer or an experienced radio/TV technician for help.

This equipment complies with FCC radiation exposure limits set forth for an uncontrolled environment. This equipment should be installed and operated with a minimum distance of 20cm between the radiator & your body. This transmitter must not be co-located or operating in conjunction with any other antenna or transmitter.



Documents / Resources

<div>LED Display User's Manual</div> <div><small>Thank you for using the LED Display of our company. In order to better experience the product, we have prepared this User's Manual. Before using the product, please read the manual carefully, so that you can correctly use it. In case of any problem, we will provide you with the appropriate solution. We will continue to improve the product and service.</small></div>	<div><a href="#">Shenzhen Chengxian Optoelectronics Technology CX16A LED Display</a> [pdf] User Manual CX16A, 2A46A-CX16A, 2A46ACX16A, CX16A LED Display, CX16A, LED Display, Display</div>
--	---

References

- [APP](#)
- [Download Center](#)