



# Shenzhen Chaoran Technology P01-007 Smart Socket User Manual

[Home](#) » [Shenzhen Chaoran Technology](#) » Shenzhen Chaoran Technology P01-007 Smart Socket User Manual



## SHENZHEN

Chaoran Technology P01-007 Smart Socket  
User Manual

### Contents

- [1 Product Schematic](#)
- [2 Product Feature](#)
- [3 Product Parameter](#)
- [4 Amazon Echo speaker settings](#)
- [5 Google Home speaker settings](#)
- [6 Troubleshooting](#)
- [7 Notice](#)
- [8 Customer Service](#)
- [9 Documents / Resources](#)
  - [9.1 References](#)
- [10 Related Posts](#)

### Product Schematic



## Product Feature

1. Remote control APP (Android&IOS)
2. SupportAmazon Echo, Google Assistant, TmallGenie voice control, IFTTT
3. Timing control, Grouping control
4. The one-key scene, Automatic scene
5. Device sharing control, family sharing control

## Product Parameter

Technical Parameters

Rated Current: 10A 16A

Rated voltage: AC 110-250V 50/60Hz

Wi-Fi Type: 2.4GHz 802.11 b/g/n

Working Temp: -20°C-50°C

Support system: Android \10S

Turn On Intelligence

**Use your phone to scan the QR code below or search “Cloud intelligence” application market to download and install the App**



<https://g.aliplus.com/ilop/static/download/ilopdownload.html?locale=en-US>

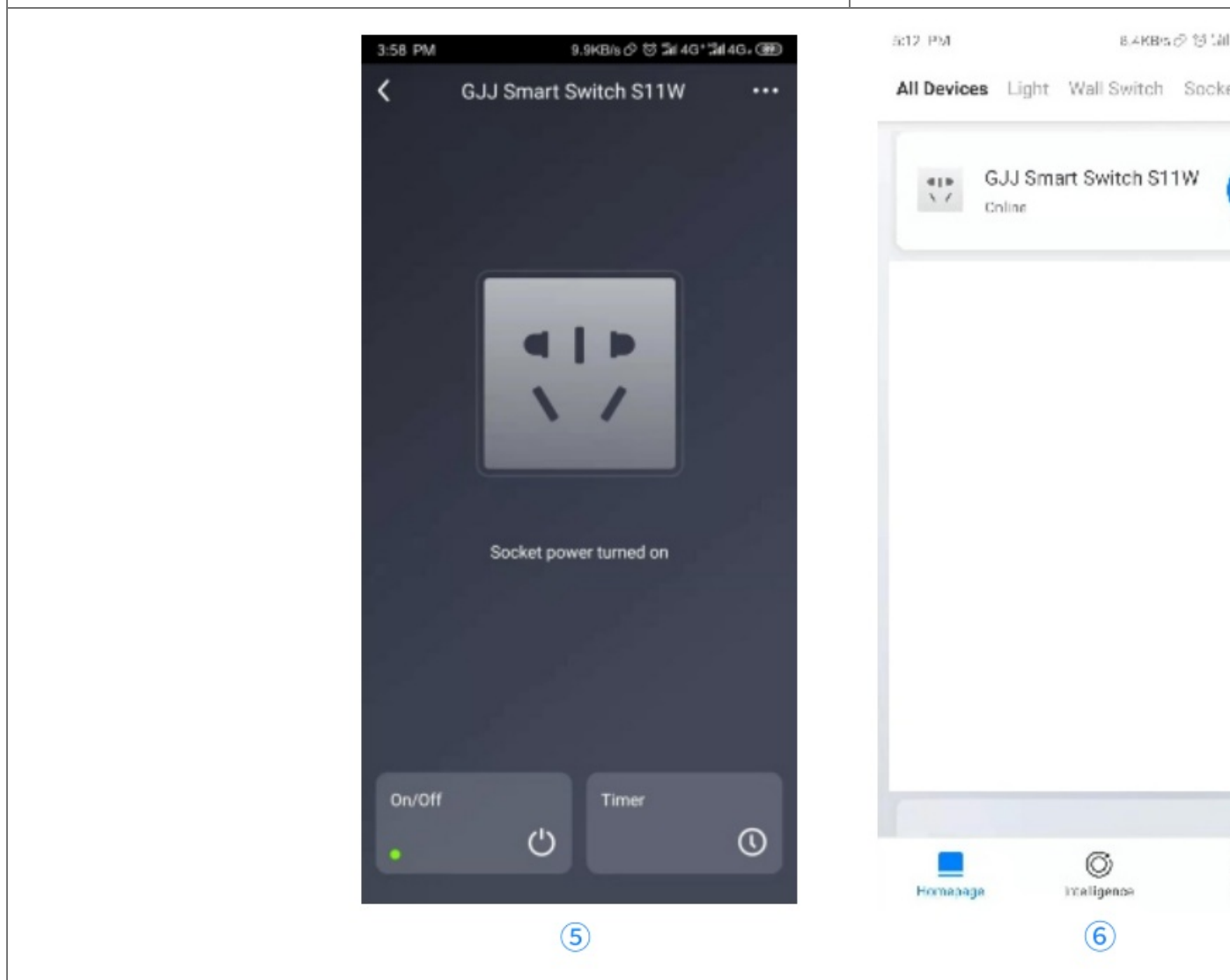
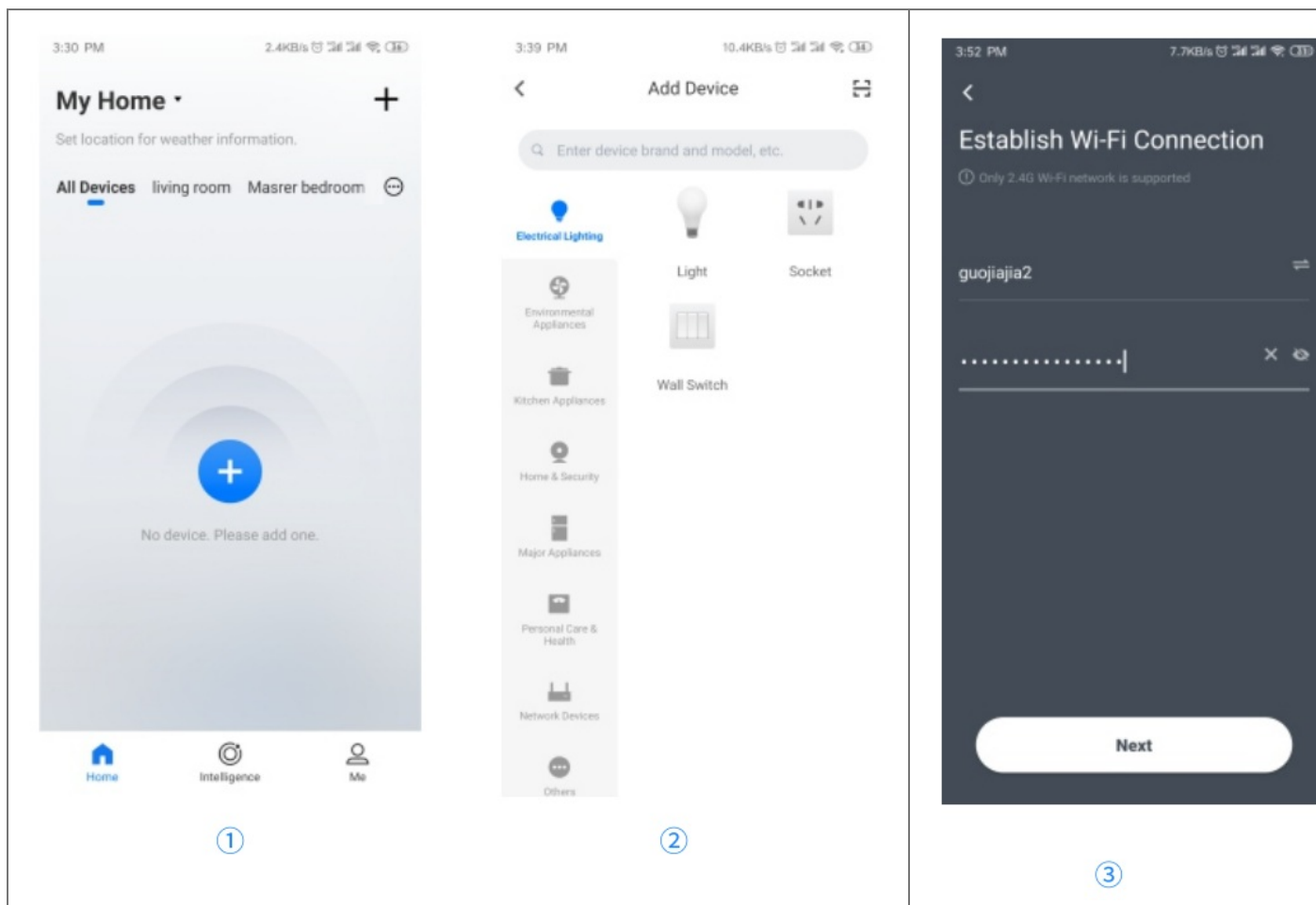
Scan to download the “Cloud intelligence” APP

**>Connecting Your Plug to a Wi-Fi Network**

Follow the on-screen instructions to register and log in to set up your smart home.  
On the Apple App Store, Google Play, or scan the QR code below and install it.  
Follow the on-screen instructions to register and log in to set up your smart home

#### **A. Easy mode (recommended)**

1. Install the socket and power on
2. Press and hold the power key for 5 seconds (according to the APP guide) to make the blue light flash
3. Open the "Cloud Intelligence" APP, click"  
Add Device" or "+" in the upper right corner of the page, and select "Manual Add"(pic1)
4. Then select "Socket" to make sure the blue light flashes cyclically and confirm in the app (pic2)
5. Select the local WIFI and enter the correct password. (The device only supports 2.4 GHz WIFI), Click  
"Next"(pic3)
6. Click "Confirm, Next"
7. Wait for the device to be added successfully



## **B. Nearby device mode**

1. If the connection fails in "Easy Mode", please change to "Near Device Mode", the mode is on the "Add Device" page
2. Long press the power key for 5 seconds (according to the APP guide) to make the blue light flash, then the corresponding socket to be added will appear in the App, click "+"
3. Select the local WIFI and enter the correct password, click "Next"
4. Click "Confirm, Next"
5. Wait for the device to be added successfully

> Control Your Smart Bulb with Alexa /Google Assistant/FTTT

## **IFTTT voice speaker settings**

1. Bind device Purchase a device that supports the "Cloud Intelligence" APP binding, add it to the device list on the homepage, and rename it, such as "My Light".
2. Create Applet You must first download the IFTTT APP and create a New Applet, using the device as a trigger or action.
3. Have found "Cloud Intelligence" Search for Service "Cloud Intelligence", enter the account number and password of the "Cloud Intelligence" APP, and also -ciate "Cloud Intelligence" with "IFTTT".
4. Complete automation setup After the association, you can set the device bound to the "Cloud Intelligence" APP to Trigger or Action, and build your own cloud intelligence, such as: "Set light to cool white when the rain comes" or "Dim the light at 9 PM" "Power on your outlet at sunset. "

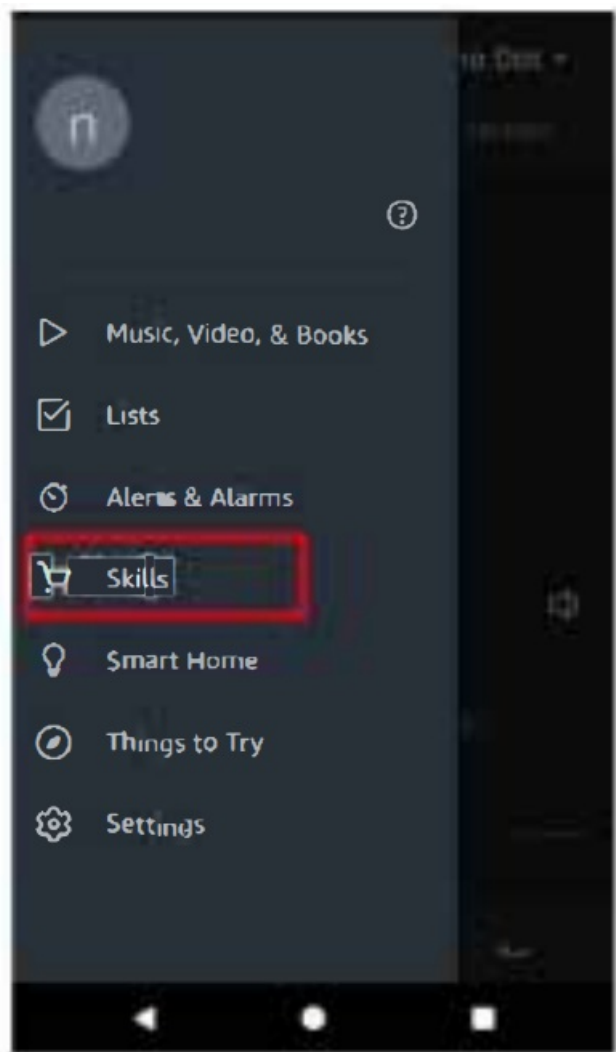
## **Amazon Echo speaker settings**

1. Bind device Purchase a device that supports the "Cloud Intelligence" APP binding, add it to the device list on the homepage, and rename it, such as "My Light".
2. Turn on "Cloud Intelligence" skills (pic7-9) You have to own an Amazon Echo speaker, then search for "Cloud Intelligence" in the Skills of the Alexa app and click "Enable".
3. Linked account(pic) Enter the account and password of the "Cloud Intelligence" APP to associate "Cloud Intelligence" with "Alexa".
4. Voice control equipment( pill) After association, you can perform voice control on the devices bound to the "Cloud Intelligence" APP, such as: "Alexa, turn on/ off my light."

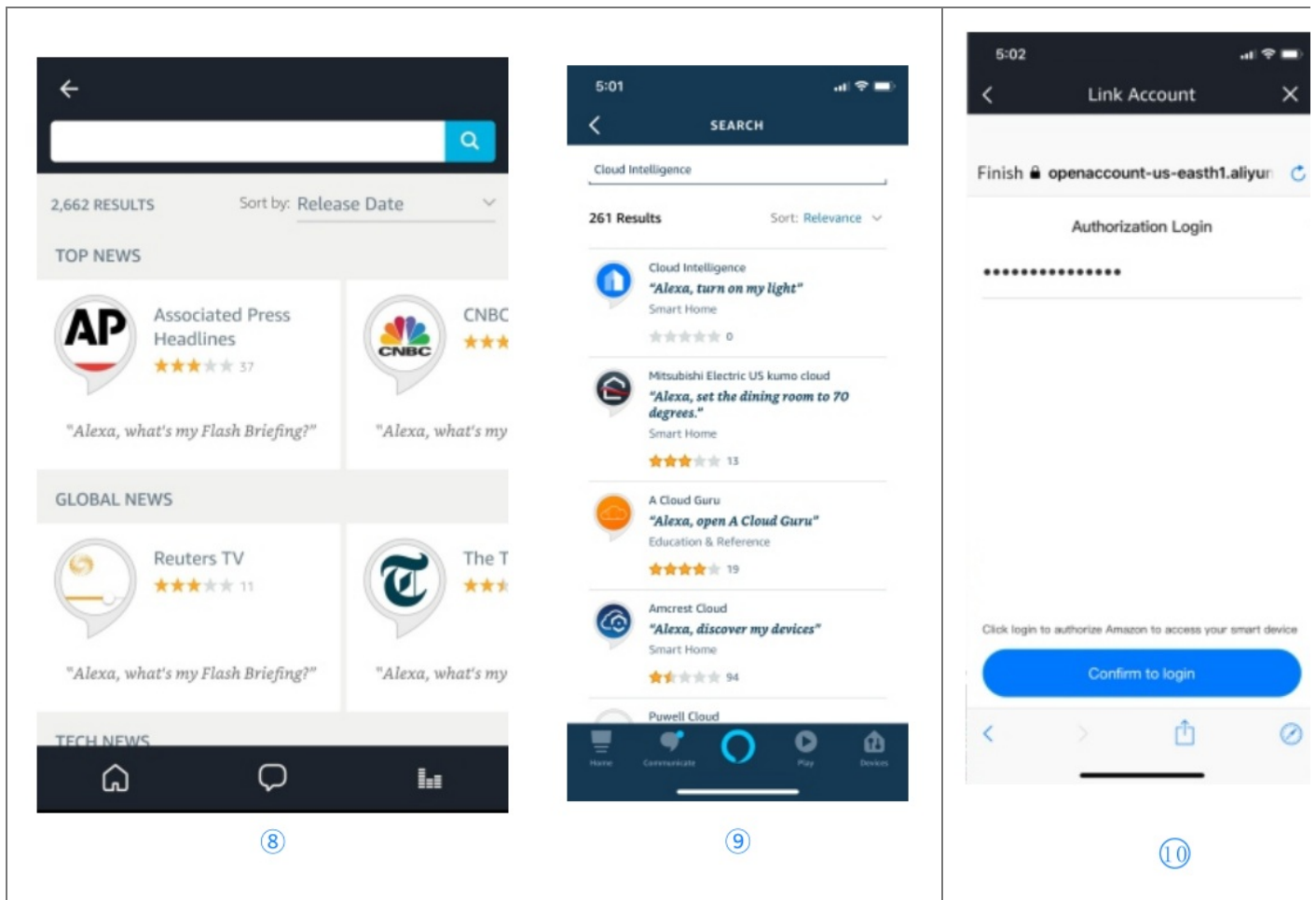
"Alexa, brighten/ dim my light."

"Alexa set my light to yellow."

"Alexa, set my light to warm white."



⑦



## Google Home speaker settings

1. Bind device Purchase a device that supports the “Cloud Intelligence” APP binding, add it to the device list on the homepage, and rename it, such as “My Light”.
2. Turn on “Cloud Intelligence” skills(Pic7) You have to have a Google Home speaker, then search for “Cloud Intelligence” in the Home control of the Google Home (or Google Assistant) app.(Pic 8-9)
3. Linked account (Pie 10) Enter the account and password of the “Cloud Intelligence” APP to associate “Cloud Intelligence” with “Google Assistant”.
4. Voice control equipment After association, you can perform voice control on the devices bound to the “Cloud Intelligence” APP, such as:
  - “OK, Google, turn on/ off my lights.”
  - “OK, Google, dim my lights to fifty percent.”
  - “OK, Google, turn my lights [color].”
  - “OK, Google, lock the front door.”

## Troubleshooting

1. Cannot connect to Wi-Fi Check if you have selected a 2.4 GHz wifi which is the same that your phone is connected with.(If your router is dual band, make sure your phone and the smart plug are connected to the 2.4 G signal.)
  - Check if you have entered the correct WiFi password
  - Check if there are any internet problems If necessary, reset your Wi-Fi router and try again
2. Cannot control the devices with Alexa/Google voice control.

·Check if there are any internet problems

·Check if you have enabled"Cloud intelligence" in Alexa or Google APP.

Check if you are using proper commands when talking to Alexa/Google Assistant, repeat your question, and speak clearly to Alexa/ Google Assistant in English Check if you have modified the name of the plug-in "Cloud intelligence"app. If yes, you need to rediscover the devices through Alexa/ Google app

## Notice

- Please check if there is damage caused by transportation.If broken, please contact the supplier for replacement.
- Please follow the instruction and notice to keep the product in a good and safe use condition
- Do not disassemble or reinstall the bulb.

## Customer Service

-12-month limited warranty

·Lifetime technical support

—[service@gjj-iot.com](mailto:service@gjj-iot.com)

For any inquiries or comments concerning this product, please do not hesitate to contact the seller. We appreciate your support!

FCC Caution: Any changes or modifications not expressly approved by the party responsible for compliance could void the user's authority to operate this equipment.

This device complies with part 15 of the FCC Rules. Operation is subject to the following two conditions: (1) this device may not cause harmful interference, and (2) this device must accept any interference received, including interference that may cause undesired operation. This device and its antenna(s) must not be co-located or operating in conjunction with any other antenna or transmitter.

**NOTE:** This equipment has been tested and found to comply with the limits for a Class B digital device, pursuant to Part 15 of the FCC Rules. These limits are designed to provide reasonable protection against harmful interference in a residential installation.


This equipment generates, uses, and can radiate radio frequency energy and, if not installed and used in accordance with the instructions, may cause harmful interference to radio communications. However, there is no guarantee that interference will not occur in a particular installation. If this equipment does cause harmful interference to radio or television reception, which can be determined by turning the equipment off and on, the user is encouraged to try to correct the interference by one or more of the following measures:

- Reorient or relocate the receiving antenna.
- Increase the separation between the equipment and receiver.
- Connect the equipment into an outlet on a circuit different from that to which the receiver is connected.
- Consult the dealer or an experienced radio/TV technician for help.

To maintain compliance with FCC's RF exposure guidelines, This equipment should be installed and operated with a minimum distance between 20cm between the Radiator and your body: Use only the supplied antenna.  
FCC ID: 2AWCY-P01-007

## Documents / Resources



	<p><a href="#">Shenzhen Chaoran Technology P01-007 Smart Socket</a> [pdf] User Manual P01-007, P01007, 2AWCY-P01-007, 2AWCYP01007, P01-007 Smart Socket, P01-007, Smart Socket</p>
--	--

References

-  [IOT Group](#)