



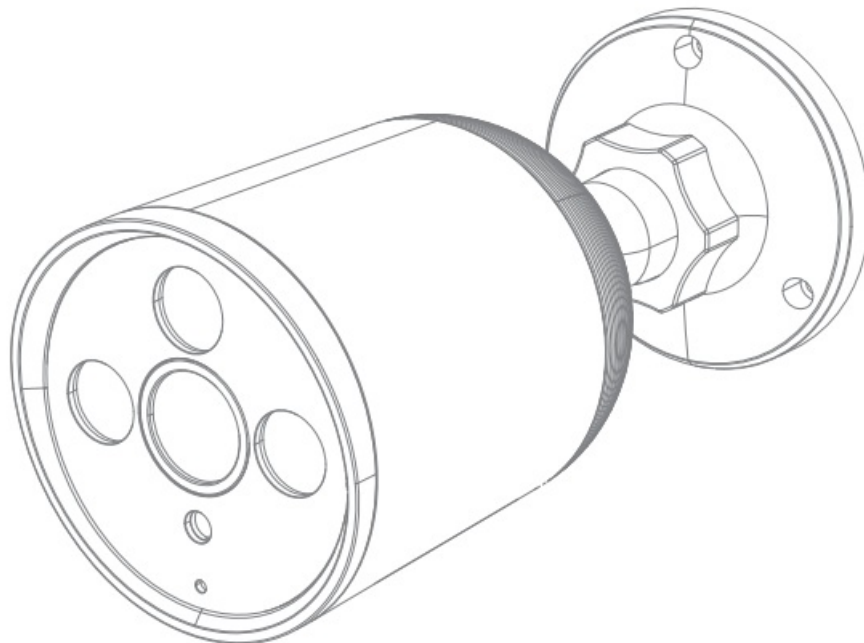
# Shenzhen Bovision Technology FVQ12AVKP wifi camera User Guide

[Home](#) » [Shenzhen Bovision Technology](#) » Shenzhen Bovision Technology FVQ12AVKP wifi camera User Guide



## SHENZHEN

**Bovision Technology FVQ12AVKP wifi camera  
QUICK GUIDE**

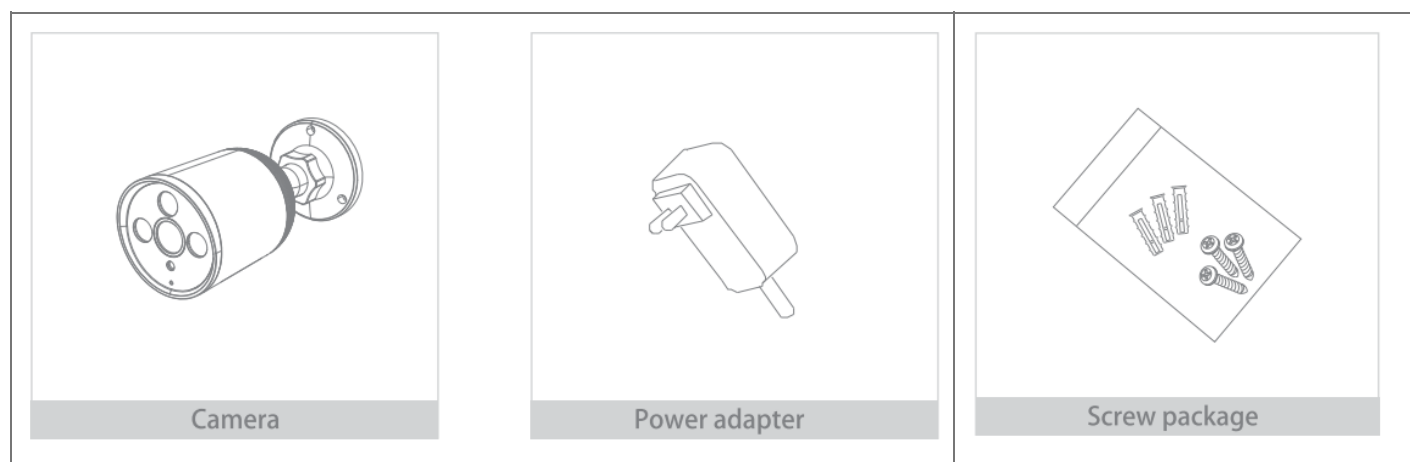


## Contents

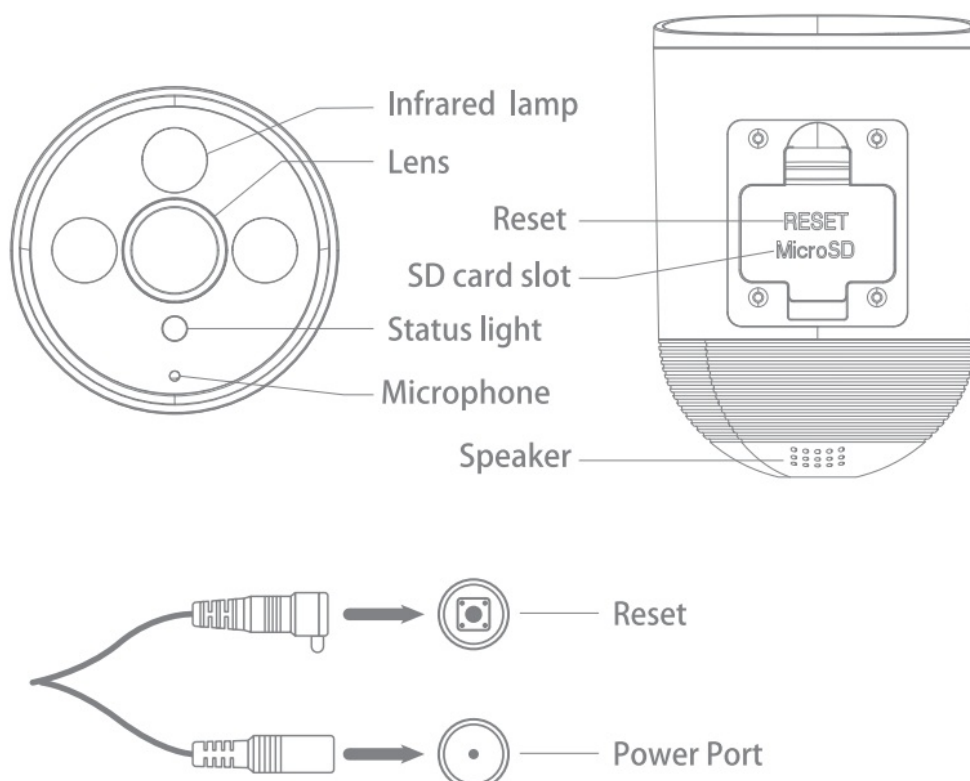
- [1 What's in the box](#)
- [2 Description](#)
- [3 Install](#)
- [4 Connect](#)
- [5 FAQ](#)
- [6 Functions](#)
- [7 Documents / Resources](#)
- [8 Related Posts](#)

## What's in the box

Consult the checklist below for all components.



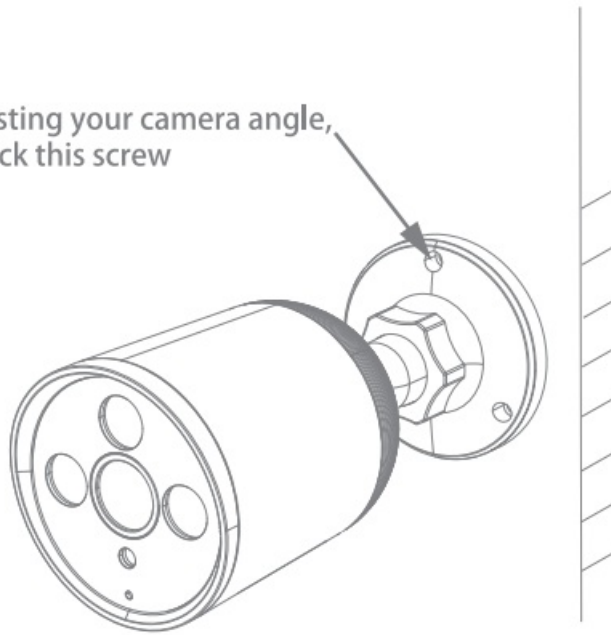
## Description



Power	DC12±10%
Status light	<ul style="list-style-type: none"> <li>• Solid red light on: the camera is turning on or malfunctional</li> <li>• Blinking red light: awaiting WiFi connection (faster blinking)</li> <li>• Solid blue light on: camera running correctly</li> <li>• Blinking blue light: currently connecting</li> </ul>
Microphone	Captures sound for your video
SD card slot	Supports local SD Card storage (Max.128G)
Reset	Press and hold for 5 seconds to reset the camera (if you have modified settings, they will r eturn to factory defaults)

## Install

After adjusting your camera angle,  
please lock this screw



1. Fix the Camera to the wall with screws
2. Adjust the camera angle to a correct view (as shown in the picture)

## Connect

### Download

CloudEdge is available for both iOS and Android OS. Search the name 'CloudEdge In App Store or Google Play, or scan the QR-Code to download the App.

- Support



### Add device

Log in to the CloudEdge, select “Add Device, and add the smart camera to the App according to the screen tips(Make the smart camera close to the router when configuring).



**NOTE:** If you need to re-select the WWI network, please press and hold the “RESET” button for 5 seconds, the device will restart, and the indicator will be flashing red.

### FAQ

**Q: The device cannot be previewed properly?**

A: Check whether the network is normal, you can place the camera close to the router, and if not, it is recommended to reset the device and add it again.

**Q: Why is it still in the list of devices after resetting?**

A: The reset device only resets the network configuration of the camera, but cannot change the configuration on the App, remove the camera, and must be deleted by the App.

**Q: How to cut the camera network to another router?**

A: First remove and reset the device on the App and then configure the device again by the App.

**Q: Why doesn't the device identify the SD card?**

A: It is recommended to plug in an SD card after a power cut. Confirm whether the SD card is normally available and the format is FAT32. And the TF card can't be identified when the internet environment is not good.

**Q: Why I can't get notifications with my cell phone App?**

A: Please confirm that the App has been running on the phone, and the relevant reminder function has been opened; Message notification and authority confirmation in the mobile phone system has been opened.

### Functions

**Video flip**

Flip your video stream up or down for maximum flexibility.

### Motion detection

Built-in motion sensors detect movement, and the camera will send you to push notifications and app alerts.

### Record

Support 24H continuous recording with high capacity SD storage.

### Day & Night

Never miss a moment, even in complete darkness, with powerful night-vision technology.



Daytime



Night

### FCC WARNING

This device complies with part 15 of the FCC Rules. Operation is subject to the following two conditions: (1) this device may not cause harmful interference, and (2) this device must accept any interference received, including interference that may cause undesired operation. Any changes or modifications not expressly approved by the party responsible for compliance could void the user's authority to operate the equipment.

**NOTE:** This equipment has been tested and found to comply with the limits for a Class B digital device, pursuant to Part 15 of the FCC Rules. These limits are designed to provide reasonable protection against harmful interference in a residential installation. This equipment generates, uses, and can radiate radio frequency energy and, if not installed and used in accordance with the instructions, may cause harmful interference to radio communications. However, there is no guarantee that interference will not occur in a particular installation. If this equipment does cause harmful interference to radio or television reception, which can be determined by turning the equipment off and on, the user is encouraged to try to correct the interference by one or more of the following measures:

- Reorient or relocate the receiving antenna.
- Increase the separation between the equipment and receiver.
- Connect the equipment into an outlet on a circuit different from that to which the receiver is connected.
- Consult the dealer or an experienced radio/TV technician for help.

To maintain compliance with FCC's RF exposure guidelines, This equipment should be installed and operated with a minimum distance of 20cm from the radiator of your body: Use only the supplied antenna.

### Documents / Resources



[Shenzhen Bovision Technology FVQ12AVKP wifi camera](#) [pdf] User Guide  
FVQ12AVKP, 2AVKPFVQ1, wifi camera