



Shenzhen Avatarcontrols ALB201W WiFi Smart Bulb User Manual

[Home](#) » [Shenzhen Avatarcontrols](#) » Shenzhen Avatarcontrols ALB201W WiFi Smart Bulb User Manual 

Contents

- [1 Shenzhen Avatarcontrols ALB201W WiFi Smart Bulb-PROD](#)
- [2 Preparation of content](#)
- [3 Add a device](#)
- [4 Troubleshooting](#)
- [5 FCCC STATEMENT](#)
- [6 Documents / Resources](#)
- [7 Related Posts](#)

Shenzhen

Shenzhen Avatarcontrols ALB201W WiFi Smart Bulb-PROD



Preparation of content

- ANatarContros APP (Aso compatible with the “smart jire” app)
- AvatarControls APP account (users need to register their own account)
- Smart Bulb
- Reset sitch on-off-on-off-on within 10 seconds Until the bub fast fashing state. Ir not operate within 3 minutes, the bulb will restore to stable white It,
- 24 GHz WIFI environment (turn off GHz)

Add a device

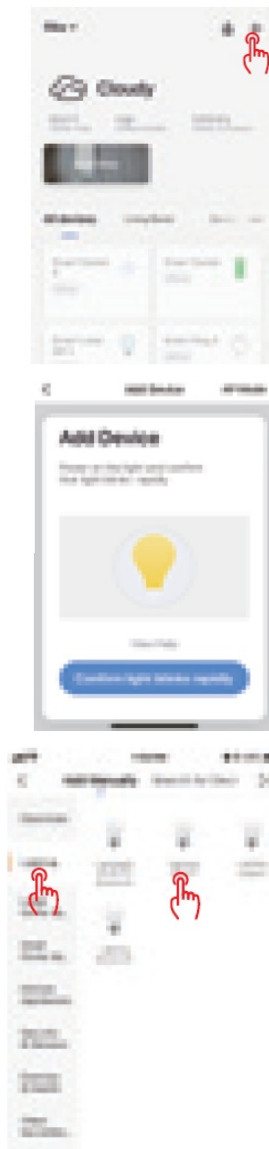
Download AvatarControls APP

- Please downbad AatarControls APP first
- Please scan the OR Code, or get AatarControls downloaded from App Store, Android Market

Register an account in AvatarControls

- Open AvatarControls into account registration page, click on the”Register
- On the registration page soecd your region and enter the email to create a new account (Phone number is not avallable)
- After successful registration, you can add a device on your ADP now.

Add devices (Smart Bulb)



- After login to AvatarControls APP, click on “.
- AvatarControls APP supports two types of distribution network modes: EZ mode and AP mode.
- EZ mode The Smart Bulb is in a state of fast Hashing. about two times a second).
- AP mock: The Smart Bub is in a state of slow Aashing About once 2 seconds If the bulb can not be paired in EZ mode rapid blink, please switch to AP mode(blink slowly)
- After entering the “Add Device page, confirm whether the Smart Bulb is in EZ mode. If not can switch to EZ mode by a continuous operation of “on-off-on off-on. Then click on “indicator light is ashing fast to start adding Smart Bulb.

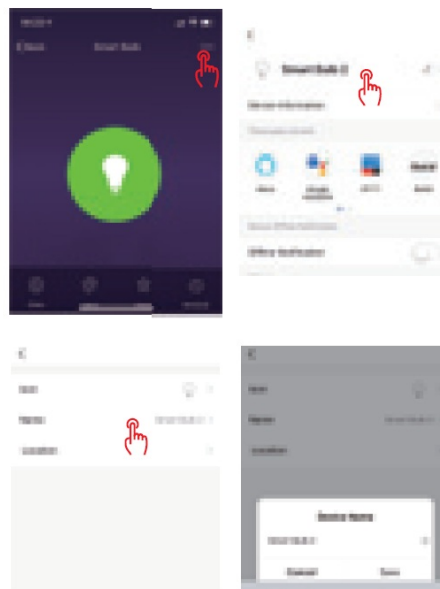


- Select the Device Work WiFi and enter the password, then start the configuration of the device. “Deke added Successfully will be displayed after a successful operation.



Rename the device

- After the device is added successfully, click the device description text to modify the device name. The name of the device is recommended to use the easy pronunciation of the English words. (Amazon Echo only supports English temporarily.



Multiple devices can be added and renamed according to the above procedures

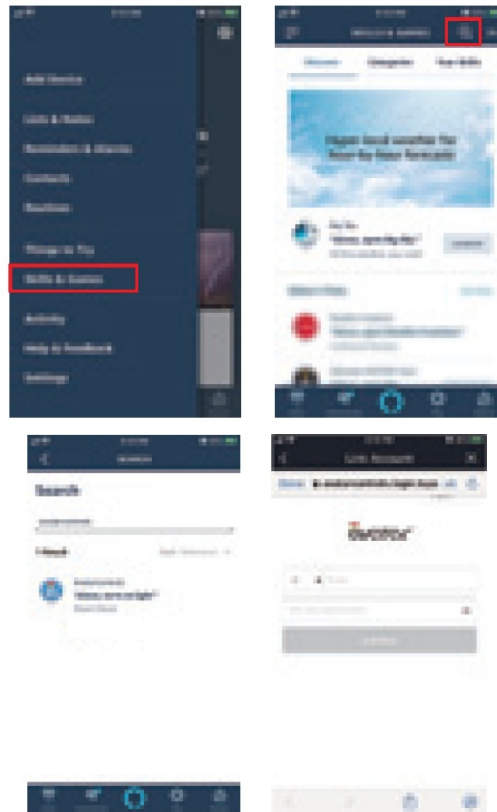
- Your smart bulb is connected to wifi and can be controlled by an app
- You have a Alexa-enabled device (ie Echo, Echo Dot, and Amazon Tap) or a device enabled with Google Assistant .e. Google Home)
- The Amazon Alexa app or the Google Home app is already installed on your smart device and you have created an account.

To control your devices with Amazon Alexa

1. Open the Alexa app and select Skills&Game from the menu in the top left corner of the homepage
2. On the Skills&Game screen, search for “Avatar- Controls
3. Enable I in the Alexa app

4. Login with your AvatarControls account to authorize Aexa to access to your account
5. Discover new smart devices via the “Smart Home menu in the Alexa app or Alexa voice control
6. Sav simple commands to Alexa

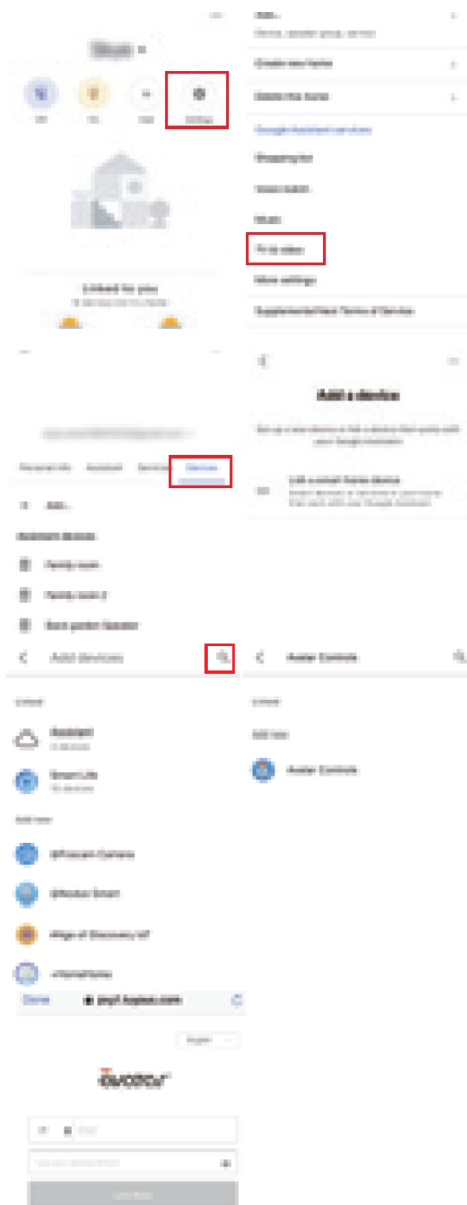
“Alexa, turn on/off bedroom light. (Turn on/off the lght “Alexa, set bedroom light to 50 percent. (Set the light to any brightness)” Next, brighten/dim bedroom light. (Increase weaken the brightness of the lghty lexa, set bedroom light to green. (Adjust the cobr of the light)



To control your devices with Google Assistant

1. Open the Google Home app and select “Settings” on the home page,
2. Find “More Settings” on the bottom of the page.
3. Choose “Devices”, and Tap the add, then you wil into And a device “page. dick “ink a Smart home device”, and “Q Icon, input “AvatarControls
4. Log in with your Avatar Controls account to authorize Google Home to access to your account
5. After successtul configuration, say simple commands to Google Assistant to control the light with your voice.

Ok Google, turn on/off the bedroom light. (Turn on/or the light or other device Ok Google, set bedroom It to 50 percent. (Set the light to any brightness Ok Google, brighten the bedroom light. (Brighten the light” Ok Google, set the bedroom light to red. (Set the color or the light only color changing lights support this function”



Troubleshooting

Cannot connect to WF

- Check If you have selected a 2.4 GHz wifi which the same that your phone is connected with. (If your) the router is dual band make sure your phone and the smart bulb are connected to the 2.4G signal)
- Check if you have entered the correct WHfi password,
- Check if there are any internet problems nece scary, reset your WHi router, and try again.

Cannot control the devices with Alexa/Google voke control

- Check If you have enabled "AvatarControls in Alexa or Google APP
- Check if the bulb is online on the app/Do not turn off the bulb through your wal switch otherwise it will go offline
- Check if you are using proper commands when toking to Alexa/ Google Assistant, repeat your question, speak clearly to Alexa/Google Assistant in English
- Check if you have modified the name of the bulb in 'The AwatarControls app. If yes, you need to rediscover the devices through Alexa/Google app.

Notice

- Please check if there is damage caused by transportation. If broken, please contact the supplier for replacement
- Please follow the instruction and notice to keep the product in good and safe use condition
- Do not disassemble or reinstall the bulb

Please be assured that we always provide a 12-month warranty (replace or refund) that covers any quality or manufacturing-related issue. Any supports, please send your order number and issue to service@avatarcontrols.com directly. We will process your case within 48 hours, thank you

FCCC STATEMENT

This device complies with Part 15 of the FCC Rules. Operation is subject to the following two conditions: (1) this device may not cause harmful interference, and (2) this device must accept any interference received, including interference that may cause undesired operation. Changes or modifications not expressly approved by the party responsible for compliance could void the user's authority to operate the equipment.


NOTE: This equipment has been tested and found to comply with the limits for a Class B digital device, pursuant to Part 15 of the FCC Rules. These limits are designed to provide reasonable protection against harmful interference in a residential installation. This equipment generates, uses, and can radiate radio frequency energy and, if not installed and used in accordance with the instructions, may cause harmful interference to radio communications. However, there is no guarantee that interference will not occur in a particular installation. If this equipment does cause harmful interference to radio or television reception, which can be determined by turning the equipment off and on, the user is encouraged to try to correct the interference by one or more of the following measures:

- Reorient or relocate the receiving antenna.
- Increase the separation between the equipment and receiver.
- Connect the equipment into an outlet on a circuit different from that to which the receiver is connected.
- Consult the dealer or an experienced radio/TV technician for help.

RF Exposure Statement

To maintain compliance with FCC's RF exposure guidelines, This equipment should be installed and operated with a minimum distance of 20cm from the radiator of your body. This device and its antenna(s) must not be co-located or operated in conjunction with antenna or transmitter any other

Documents / Resources

	<p>Shenzhen Avatarcontrols ALB201W WiFi Smart Bulb [pdf] User Manual ALB201W, 2ANJP-ALB201W, 2ANJPALB201W, ALB201W WiFi Smart Bulb, WiFi Smart Bulb</p>
---	---