



Shenzhen Apexel Technology K1 Wireless Microphone User Manual

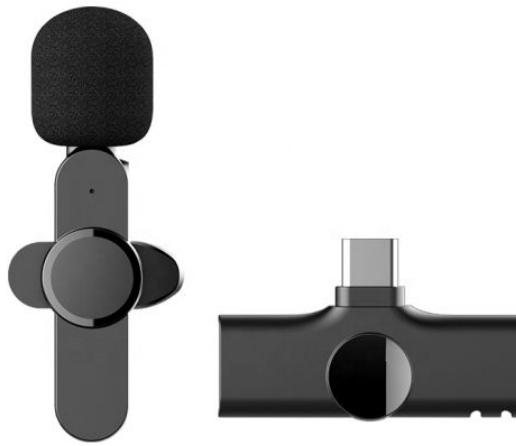
[Home](#) » [Shenzhen Apexel Technology](#) » Shenzhen Apexel Technology K1 Wireless Microphone User Manual 

Contents

- 1 Shenzhen Apexel Technology K1 Wireless Microphone
- 2 Introduction
- 3 ID Diagram
- 4 How to use
- 5 About UI
 - 5.1 Microphone Transmitter
 - 5.2 Receiver
- 6 Packing List
 - 6.1 content of packing
- 7 Documents / Resources
- 8 Related Posts

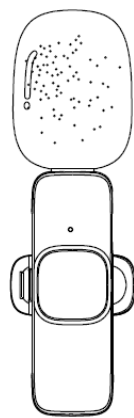
SHENZHEN

Shenzhen Apexel Technology K1 Wireless Microphone

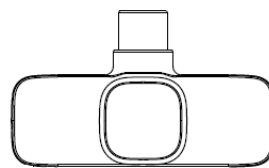


Introduction

Thanks for choosing our product. This product is a smart wireless microphone that provides professional-grade recording output. Plug and play, no app required. Multiple uses: It can be used in noured live broadcast, video Vlog shooting, program interview, recording, video teaching and other occasions. The wireless Microphone consists of 13No parts, one is Microphone transmitter , the other one is receiver.
(see as below picture)

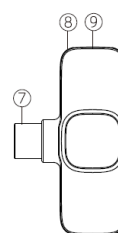
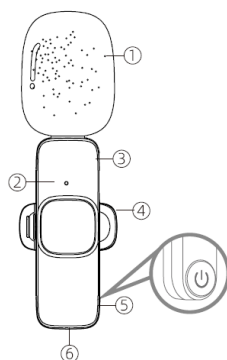


(Microphone transmitter)



(receiver)

ID Diagram

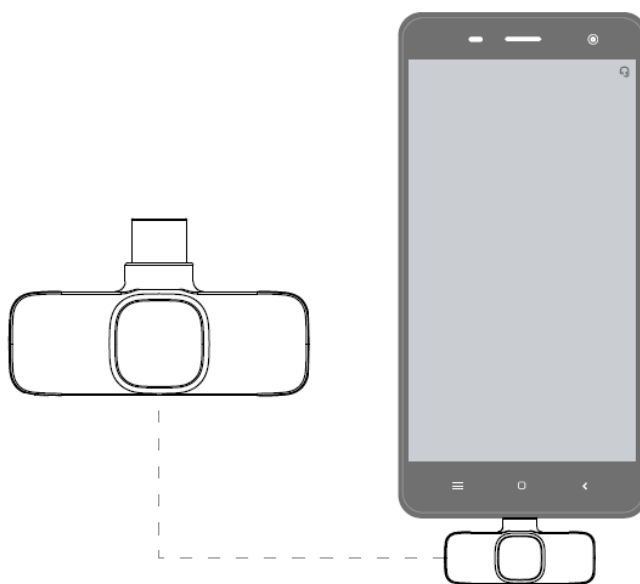


1. Windproof net

2. Microphone clip
3. Switch key
4. port to connect phone
5. Receiver indicator
6. Reset key of receiver
7. port to connect phone
8. Receiver indicator
9. Reset key of receiver

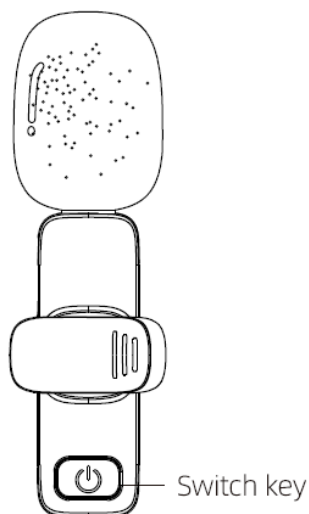
How to use

Step 1: connect the receiver to phone with port.

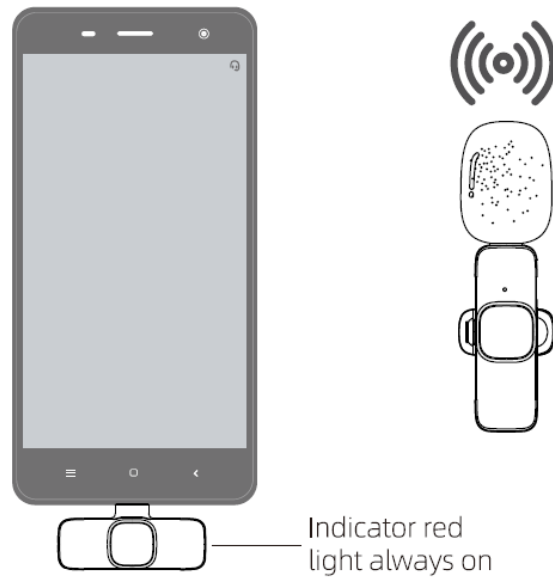


Note: oppo / vivo/ iqoo / realm brand mobile phones can be used normally only when they go to the settings (search 'OTG' – turn on OTG power supply)

Step 2: Press switch key of microphone, the indicator Light turns green, and then power is turned on.

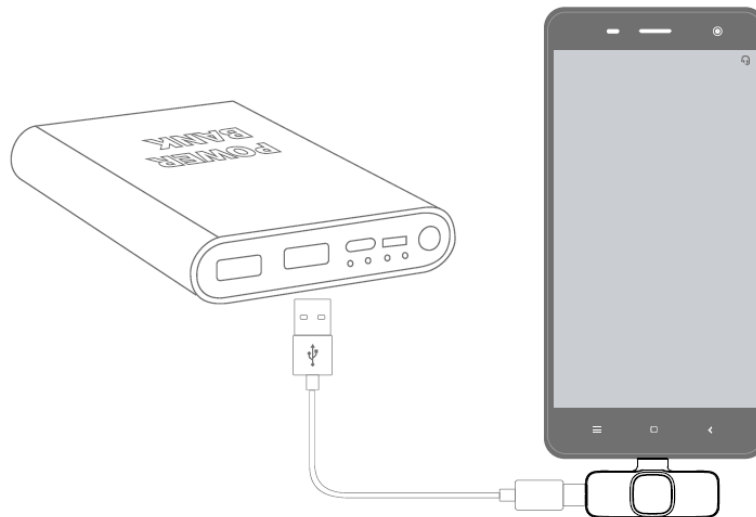


Step 3: The indicator red Light of receiver keeps always on, then open the phone camera, live App or other Apps, and then to use the microphone to receive sound.



Special Note:

For the use of port : there is no battery in receiver, and no need to recharge during live. If the phone is low power during Live, it can be recharged directly through port.



About UI

Microphone Transmitter

Function	How to use	Light
Power on	Press switch key once	Green light on
Power off	Press switch key about 3 seconds	Light off
Pairing		Red and green flash alternately
Paired		Green light keeps on
Pause	Press switch key once	The green light flashes slowly during pause
Reset	Press reset key for 3 seconds	
Low battery alarm	Power on state	The red and green lights come on every 10 seconds
Charging	Charging with cable	The red light goes out when it is fully charged

Receiver

Function	How to use	Light
Power on	Plug in the device	Red light on
Power off	Plug off the device	Light off
Pairing		Red light flashes slowly
Paired		Red light on

Packing List

content of packing

1. Microphone transmitter
2. Receiver
3. Charging cable
4. User manual

FCC STATEMENT :

This device complies with Part 15 of the FCC Rules. Operation is subject to the following two conditions:

1. This device may not cause harmful interference, and
2. This device must accept any interference received, including interference that may cause undesired operation.

Warning: Changes or modifications not expressly approved by the party responsible for compliance could void the user's authority to operate the equipment.

NOTE: This equipment has been tested and found to comply with the limits for a Class B digital device, pursuant to Part 15 of the FCC Rules. These limits are designed to provide reasonable protection against harmful interference in a residential installation. This equipment generates uses and can radiate radio frequency energy


and, if not installed and used in accordance with the instructions, may cause harmful interference to radio communications. However, there is no guarantee that interference will not occur in a particular installation. If this equipment does cause harmful interference to radio or television reception, which can be determined by turning the equipment off and on, the user is encouraged to try to correct the interference by one or more of the following measures:

- Reorient or relocate the receiving antenna.
- Increase the separation between the equipment and receiver.
- Connect the equipment into an outlet on a circuit different from that to which the receiver is connected.
- Consult the dealer or an experienced radio/TV technician for help.

RF warning statement:

The device has been evaluated to meet general RF exposure requirement. The device can be used in portable exposure condition without restriction.

Documents / Resources

	Shenzhen Apexel Technology K1 Wireless Microphone [pdf] User Manual MIC004, 2A72M-MIC004, 2A72MMIC004, K1 Wireless Microphone, Wireless Microphone
---	---