



## Shenzhen Aiyoula Technology HP68 Dash Cam App Instruction Manual

[Home](#) » [Shenzhen Aiyoula Technology](#) » Shenzhen Aiyoula Technology HP68 Dash Cam App Instruction Manual 

### Connect to APP via WiFi

You can check out and download videos and photos on the phone after connecting to the App via WiFi.

### Download and Install APP

1. Search “RoadCam” in the Android or Apple App store.
2. Scan the code to download the App.

#### NOTE:


To make sure the App works correctly, please allow the permissions of the App installation when you download and install the App.



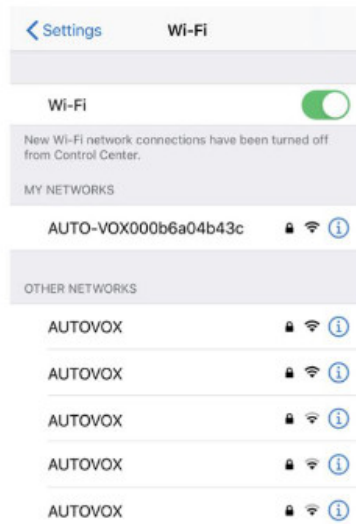
<http://139.224.70.115/app/roadcam/roadcam.html>

### Connect to the App



1. Click,  and enter the WiFi interface.
2. Enter the wife setting on your phone, find the WiFi name: AUTO-VOX xxxxx, and enter password: 12345678.
3. Enter the App, click and connect it to your dashcam and you will see the recording interface.

**NOTE:** After connecting the WiFi, the Android mobile data will be unavailable but Apple's is available.



## Contents

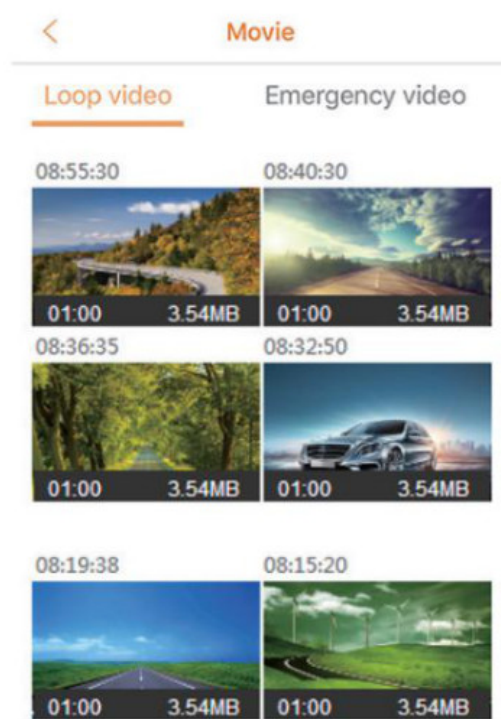
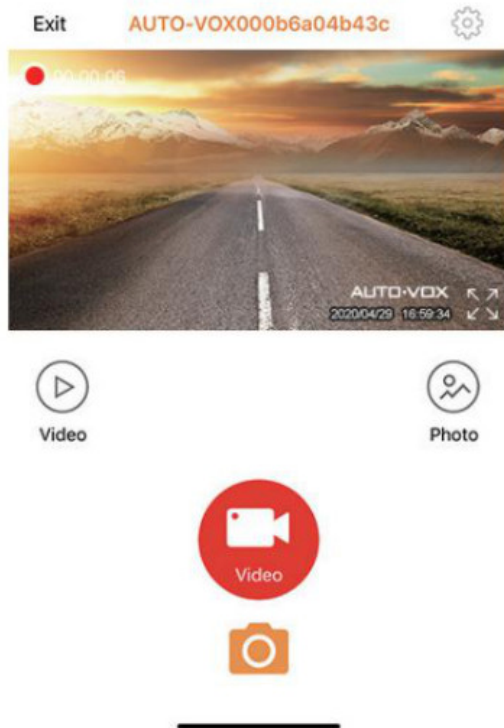
- [1 App Introduction](#)
- [2 Documents / Resources](#)
- [3 Related Posts](#)

## App Introduction

1. Check out files


Click "Video" you can view loop-recording videos and emergency videos, and you can browse the photos by clicking "Photo".

**NOTE:** The dashcam will stop recording when you view video files on the App.

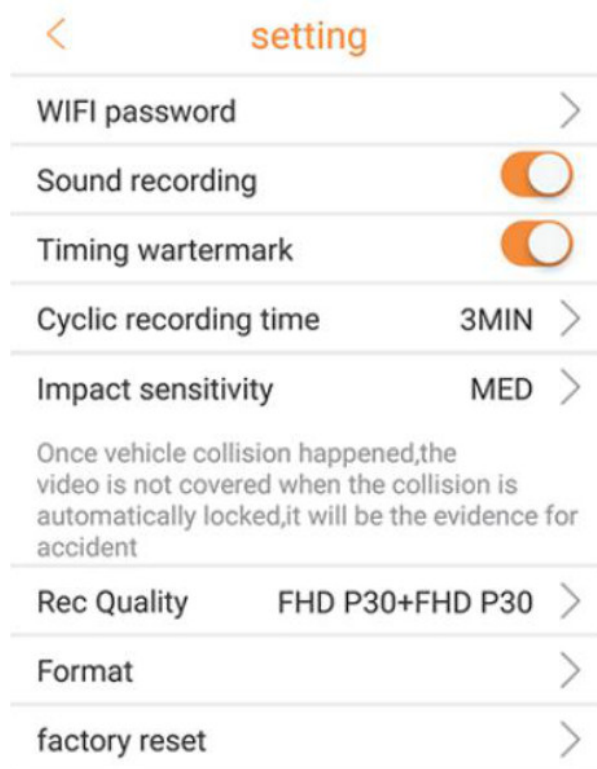


## 2. Settings



Click the  icon in the upper right of the recording interface to enter Settings.

- Wifi Password: Change the WiFi password
- Sound Recording: Able/unable 'Timing Watermark: Able or unable watermark the time on video
- Cyclic Recording time: Set the fragment length of loop-record
- Impact Sensitivity: OFF/LOW/MED/HIGH
- Rec Quality: FHD: 1080P, HD: 720P
- Format: Format the SD card
- Factory Reset




This device complies with part 15 of the FCC Rules. Operation is subject to the following two conditions: (1) This device may not cause harmful interference, and (2) this device must accept any interference received, including interference that may cause undesired operation.

Any changes or modifications not expressly approved by the party responsible for compliance could void the user's authority to operate the equipment.

**Note:** This equipment has been tested and found to comply with the limits for a Class B digital device, pursuant to part 15 of the FCC Rules. These limits are designed to provide reasonable protection against harmful interference in a residential installation. This equipment generates uses and can radiate radio frequency energy and, if not installed and used in accordance with the instructions, may cause harmful interference to radio communications. However, there is no guarantee that interference will not occur in a particular installation. If this equipment does cause harmful interference to radio or television reception, which can be determined by turning the equipment off and on, the user is encouraged to try to correct the interference by one or more of the following measures:

- Reorient or relocate the receiving antenna.
- Increase the separation between the equipment and receiver.
- Connect the equipment into an outlet on a circuit different from that to which the receiver is connected.
- Consult the dealer or an experienced radio/TV technician for help.

## Documents / Resources

	<p><a href="#">Shenzhen Aiyoula Technology HP68 Dash Cam App [pdf] Instruction Manual</a>  HP68, 2AZ2D-HP68, 2AZ2DHP68, HP68 Dash Cam App, Dash Cam App</p>
---	---