



Shenzhen 1mii Technologies B06T1 Wireless Transmitter and Receiver User Manual

[Home](#) » [Shenzhen 1mii Technologies](#) » Shenzhen 1mii Technologies B06T1 Wireless Transmitter and Receiver User Manual

Contents [[hide](#)]

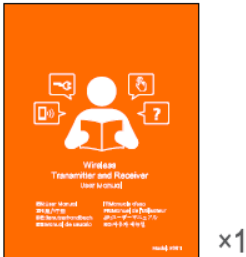
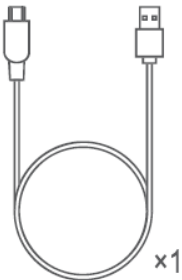
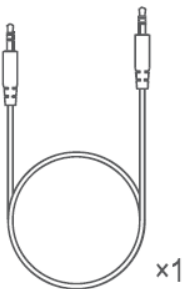
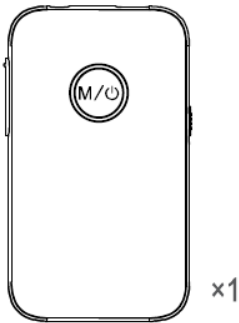
- [1 Shenzhen 1mii Technologies B06T1 Wireless Transmitter and Receiver](#)
- [2 IN THE BOX](#)
- [3 PRODUCT OVERVIEW](#)
- [4 TX Mode](#)
- [5 RX Mode](#)
- [6 Control Functions](#)
- [7 Instructions](#)
- [8 FCC:](#)
- [9 Documents / Resources](#)
- [10 Related Posts](#)

Shenzhen

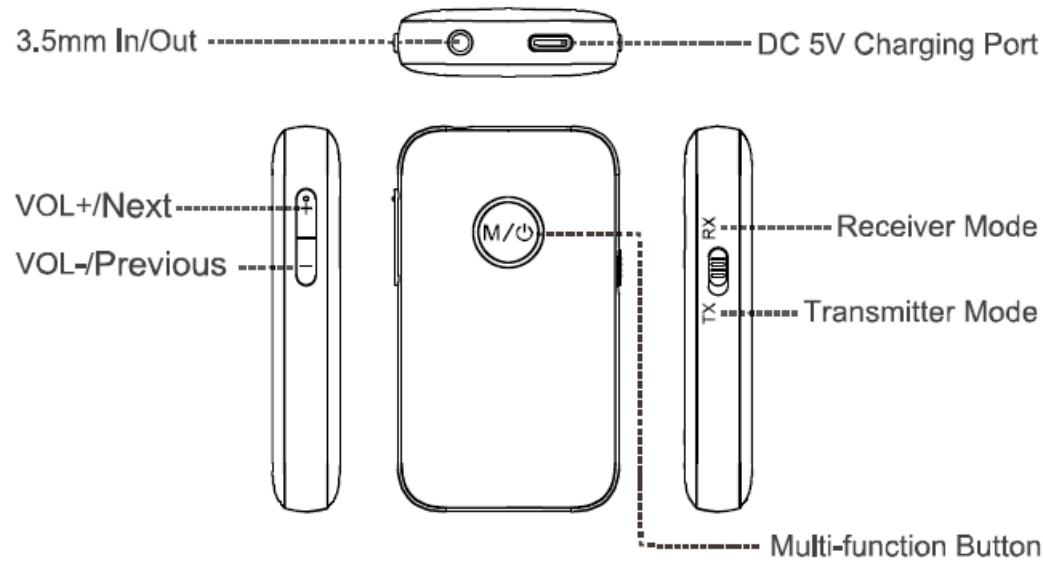
Shenzhen 1mii Technologies B06T1 Wireless Transmitter and Receiver



IN THE BOX

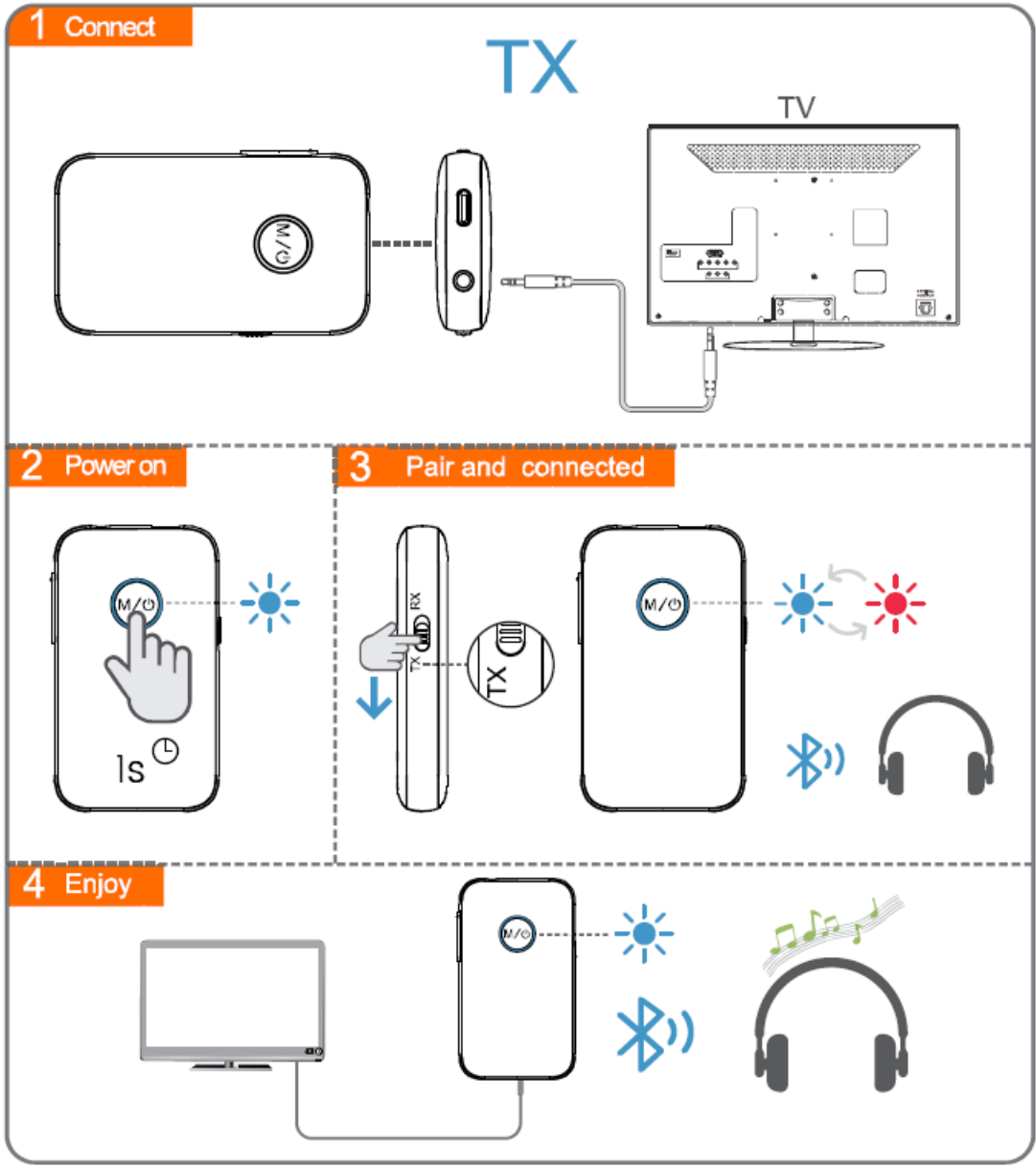


PRODUCT OVERVIEW

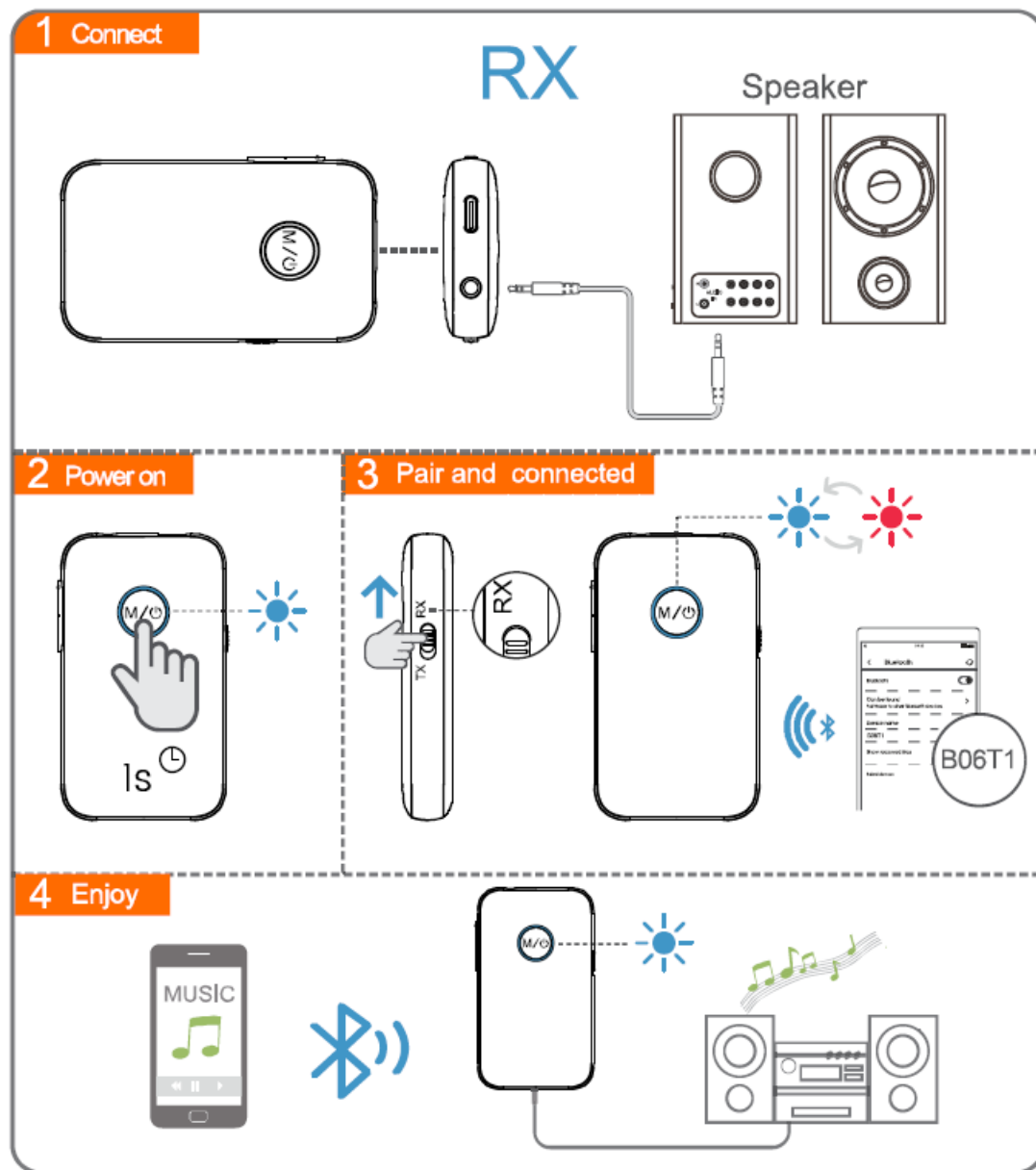


Button	Function	Operation
	Power on	Press for about 1s
	Enter pairing mode	Press for about 2s
	Power off	Press for about 4s
	Reset	Press for about 10s
TX	Transmitter mode	Slide to TX to enter transmitter mode
RX	Receiver mode	Slide to RX to enter receiver mode
+	Volume up	Short press
	Next	Long press
-	Volume down	Short press
	Previous	Long press

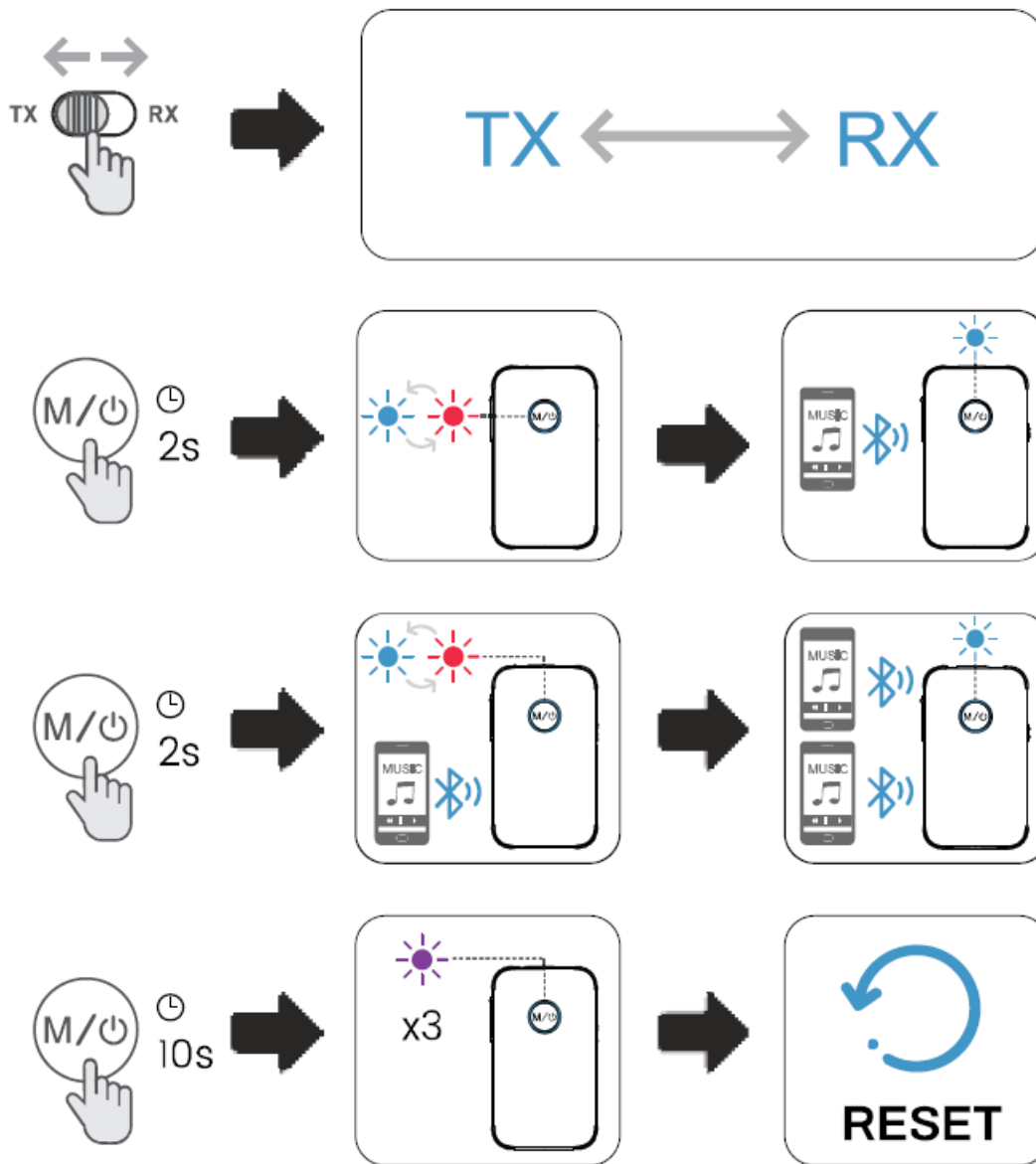
TX Mode



RX Mode



Control Functions



Instructions

TX Mode:


1. Connect B06TI to non-Bluetooth TV or another device with 3.5mm audio cable
2. Flip the mode button to TX after powered on, the adapter will automatically enter the pairing mode (LED lights flashing red and blue)
3. Set your device (Bluetooth headphone or Bluetooth speaker) to pairing mode, and wait for the pairing to succeed.
4. **Enjoy your music.**

RX Mode


1. Connect B06TI to an amplifier or powered speaker with a 3.5mm audio cable.
2. Flip the mode button to 'RX after powered on, the adapter will automatically enter the pairing mode (LED lights flashing red and blue).

3. Activate the Bluetooth of the mobile phone/computer/tablet, click 'BO6TI' to connect, and wait for the pairing to succeed.
4. Enjoy your music.

How to enter pairing mode?

Press and hold the button  for 2 seconds after powered on, B06TI will enter the pairing mode (LED lights flashing red and blue).

How to pair the second device?

1. Set B06TI to pairing mode again (press and hold the button  for 2 seconds until the LED flashes red and blue).
2. Activate the Bluetooth of the second mobile phone, find B06TI", click connect and wait for the pairing to succeed.
3. Enjoy your music.


Note: You can only play music on one device at a time, so if you want to play music on the second device, you need to pause the music on the first device before playing it on the second device.

Charging method

- Plug in the charging cable to charge the B06TI, and the LED will be steady red.
- When the battery is fully charged, the LED indicator will turn off.

How to reset the device?

if B06TI cannot be connected or does not work normally, please refer to the following methods to reset the device:

Turn off B06TI, and Long press  for 10 seconds, the purple indicator light flashes 3 times at the same time, then it will turn on automatically, and enter pairing mode.

The Bluetooth® word mark and logos are owned by the Bluetooth SIG, Inc. and any use of such marks by IMli Ltd. is under license. other trademarks and trade names are those of their respective owners.

FCC:

This device complies with part 15 of the FCC rules. Operation is subject to conditions:

1. This device may not cause harmful interference, and
2. This device must accept any interference.

Changes or modifications not expressly approved by IMli Ltd. will void the user's authority to operate the equipment. This equipment has been tested and found to comply with the limits for a Class B digital device, pursuant to part 15 of the FCC Rules. These limits are designed to provide reasonable protection against harmful interference in a residential installation. This equipment generates, uses and can radiate radio frequency energy and, if not installed and used in accordance with the instructions, may cause harmful interference to radio communications.

However, there is no guarantee that interference will not occur in a particular installation. If this equipment does cause harmful interference to radio or television reception, which can be determined by turning the equipment off and on, the user is encouraged to try to correct the interference by one or more of the following measures.

- Reorient or relocate the receiving antenna.
- Increase the separation between the equipment and receiver.
- Connect the equipment to an electrical outlet on a different circuit to the one to which the receiver is connected.
- Consult the manufacturer or an experienced radio/ TV technician for help.

This product, like other radio devices, emits radio frequency electromagnetic energy and operates within the guidelines found in radio frequency safety standards and recommendations. These standards and recommendations reflect the consensus of the scientific community and result from deliberations of panels and committees or scientists who continually review and interpret the extensive research on radio frequency exposure.

The device has been evaluated to meet general

RF exposure requirement. The device can be used in portable exposure conditions without restriction.

CE

IMii Ltd. hereby declares that this product is in compliance with the essential requirements and other relevant provisions of Directive 2014/53/EU

The full text of the EU declaration of conformity is available at the following internet address: www.imii.com In accordance with Article 10 (2) and Article 10(10), this product is allowed to be used in all EU member states
Shenzhen IMii Technologies Limited Baoan District, Shenzhen 518100 China

EU Importer

evatmaster Consulting GmbH Bettinastr. 30, 60325 Frankfurt am Main, Germany

Warranty

Warranty service is limited to normal use. Any man-made damages such as from connecting to an unsuitable power source, using an unsuitable device, or not following the instructions, as well as damages that did not occur during shipping, repairs and adjustments not approved by the company, damages from misuse, inattention, or improper installation may cause the warranty to be ineffective immediately. This warranty does not include shipping fees.

Disposal

Always dispose of the used appliance at a recycling center. Do not dispose of the used appliance together with household waste.

Manufacturer: Shenzhen Ankit Electronics Limited

Address: Runfeng Industrial Park, No. 4197 Baoan Blvd, Xixiang St., Baoan Dist., Shenzhen, China

Operator Shenzhen IMii Technologies Limited

Address: Qianhai Complex A201, Qianwan Road 1, Qianhai Shenzhen-Hong Kong Cooperation Zone, Shenzhen, China

We hope you never have the need, but if you do, our service is friendly and hassle-free.

support@imii.com

[web: www.imii.com](http://www.imii.com)

Documents / Resources



[Shenzhen 1mii Technologies B06T1 Wireless Transmitter and Receiver](#) [pdf] User Manual
RT5017, 2AUFR-RT5017, 2AUFRRT5017, B06T1 Wireless Transmitter and Receiver, B06T1,
Wireless Transmitter and Receiver