



[Home](#) » [SHENGXUAN](#) » **SHENGXUAN 821 P5 Super Mini Game Console User Manual** 

Contents [[hide](#)]

- [1 SHENGXUAN 821 P5 Super Mini Game Console](#)
- [2 Product Information](#)
- [3 Product Usage Instructions](#)
- [4 INTRODUCTION FOR CONNECTING TV](#)
- [5 Introduction of the machine's Function](#)
- [6 Attention for Using](#)
- [7 using the Attention for Power Adapter](#)
- [8 Introduction of the buttons](#)
- [9 FCC Warning](#)
- [10 FAQ](#)
- [11 Documents / Resources](#)
 - [11.1 References](#)

SHENGXUAN

SHENGXUAN 821 P5 Super Mini Game Console



Product Information

Specifications

- **Compliance:** Part 15 of the FCC Rules
- **Radiation Exposure Limits:** FCC approved for an uncontrolled environment
- **Minimum Distance:** 0cm between the radiator and the body

Product Usage Instructions

Installation

1. Ensure the device is placed in a well-ventilated area.
2. Keep a minimum distance of 0cm between the radiator of the device and your body.

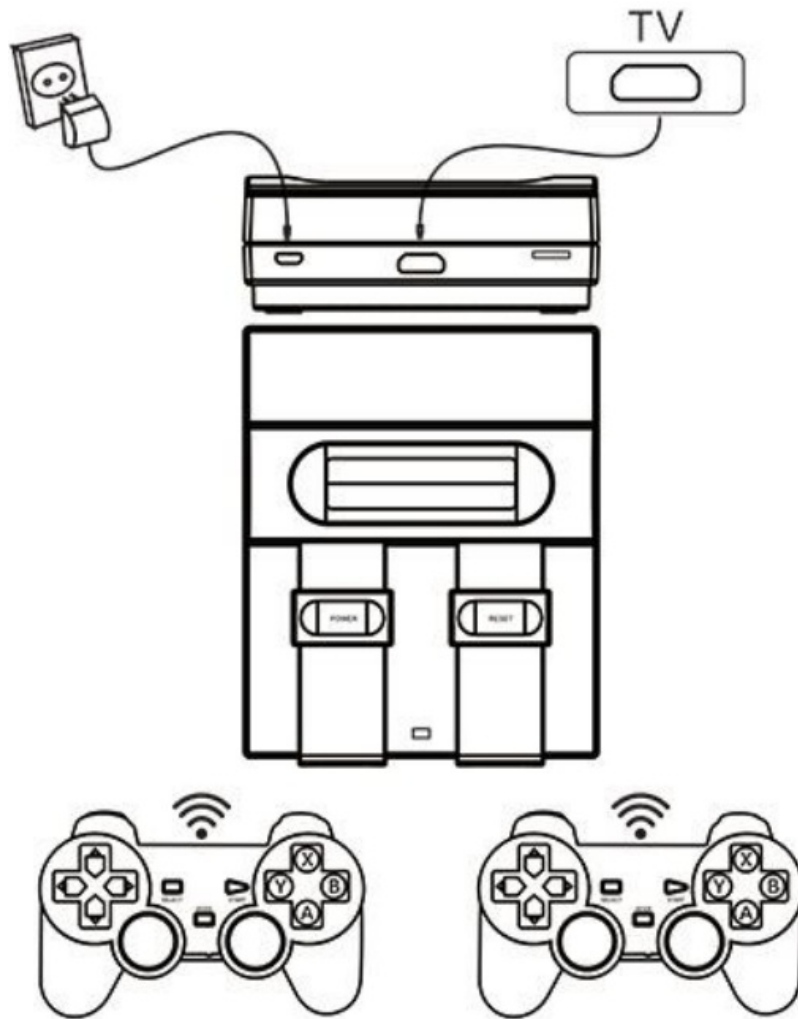
Operation

1. Power on the device using the designated power button.
2. Follow the user manual for specific instructions on device operation.

Maintenance

1. Clean the device regularly with a soft, dry cloth to prevent dust accumulation.
2. Avoid exposing the device to extreme temperatures or moisture.

INTRODUCTION FOR CONNECTING TV



- **Note:** There may be some differences when connecting different televisions.
- For more details, consult the dealers or the TV factory.

Introduction of the machine's Function

1. It TF Card has built-in classic games in total. which cannot be changed.
2. It uses a 5V charger for power supply, and the available voltage is 110V-220V, so the ordinary household power source can provide that
3. It will send with an AV cable which supports TV output
4. There are A and B buttons on the machine. which do not support running-kick, so it has a higher requirement on APM and othe operations of the playability is also higher.

Attention for Using

1. Never allow children to play with it alone, for it comes into the power of using.
2. Please turn off the machine and operate it after cooling it when there is something

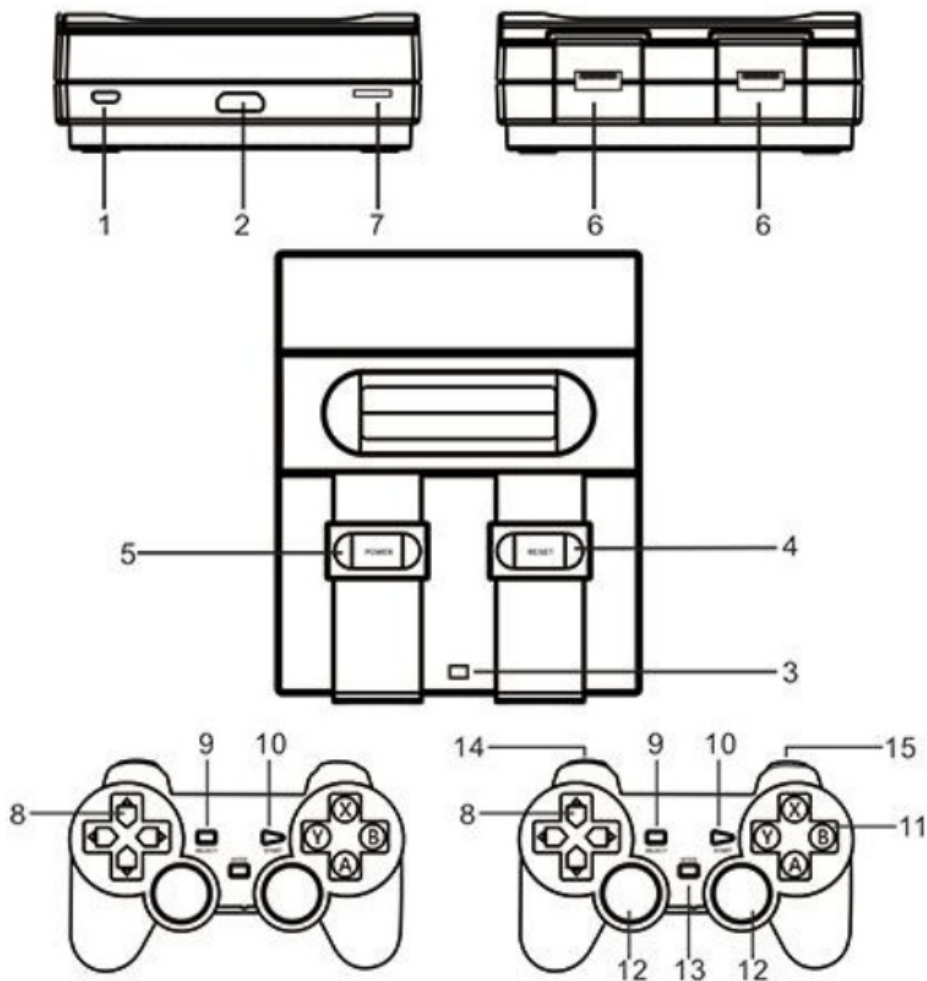
wrong with the running machine, like the system halting.

3. Never put the machine in places extremely cold or hot.
4. Never disassemble or repair the machine by yourself.
5. It may be unavailable for some TVs with a 4K resolution ratio

using the Attention for Power Adapter

1. Never allow children below 3 years old to use it alone.
2. Never play with the transformer casually, for it is not a toy.
3. The machine is available for those recommended transformers conforming to the international standard.
4. Please disconnect the machine from the power source when cleaning the machine
5. Please check the lines, plug, shell and other parts regularly. And stop using them if there is anything wrong with them until they are repaired.
6. Never play it with Other power sources, not recommended.

Introduction of the buttons



1. Adapter input
2. HDMI-OUT
3. Power Indicator light
4. Reset
5. Power
6. USB interface
7. TF card
8. Direction keys
9. Select
10. Start
11. Function keys
12. Joystick
13. Mode
14. **L/L1** Key
15. **R/RI** Key

FCC Warning

This device complies with part 15 of the FCC Rules. Operation is subject to the following two conditions:

1. This device may not cause harmful interference,
2. This device must accept any interference received, including interference that may cause undesired operation.

Caution: Any changes or modifications to this device not explicitly approved by the manufacturer could void your authority to operate this equipment.

This equipment complies with FCC radiation exposure limits set forth for an uncontrolled environment. This equipment should be installed and operated with minimum distance 0cm between the radiator and your body. This equipment has been tested and found to comply with the limits for a Class B digital device, under part 15 of the FCC Rules.

These limits are designed to provide reasonable protection against harmful interference in a residential installation. This equipment generates, uses and can radiate radio frequency energy and, if not installed and used according to the instructions, may cause harmful interference to radio communications. However, there is no guarantee that


interference will not occur in a particular installation. If this equipment does cause harmful interference to radio or television reception, which can be determined by turning the equipment off and on, the user is encouraged to try to correct the interference by one or more of the following measures:

- Reorient or relocate the receiving antenna.
- Increase the separation between the equipment and receiver.
- Connect the equipment to an outlet on a circuit different from that to which the receiver is connected.
- Consult the dealer or an experienced radio/TV technician for help.

FAQ

- **Q: Can I modify the device for better performance?**
 - **A:** No, any changes or modifications not approved by the manufacturer could void your warranty and authority to operate the equipment.
- **Q: How far should the device be from my body during operation?**
 - **A:** The device should be operated with a minimum distance of 0cm between the radiator and your body as per FCC regulations.

Documents / Resources

	SHENGXUAN 821 P5 Super Mini Game Console [pdf] User Manual 821 P5, 821 P5 Super Mini Game Console, Super Mini Game Console, Mini Game Console, Game Console
---	--

References

- [User Manual](#)

Leave a comment

Your email address will not be published. Required fields are marked *

Comment *

Name

Email

Website

☐ Save my name, email, and website in this browser for the next time I comment.

Post Comment

Search:

e.g. whirlpool wrf535swhz

Search

[Manuals+](#) | [Upload](#) | [Deep Search](#) | [Privacy Policy](#) | [@manuals.plus](#) | [YouTube](#)

This website is an independent publication and is neither affiliated with nor endorsed by any of the trademark owners. The "Bluetooth®" word mark and logos are registered trademarks owned by Bluetooth SIG, Inc. The "Wi-Fi®" word mark and logos are registered trademarks owned by the Wi-Fi Alliance. Any use of these marks on this website does not imply any affiliation with or endorsement.