



SHEN ZHEN WB603 Dual Band Wireless Adapter with Bluetooth Function User Manual

[Home](#) » [SHEN ZHEN](#) » SHEN ZHEN WB603 Dual Band Wireless Adapter with Bluetooth Function User Manual



SHEN ZHEN WB603 Dual Band Wireless Adapter with Bluetooth Function User Manual



Contents

- [1 Installation](#)
- [2 B: Bluetooth driver installation:](#)
- [3 Install Drivers:](#)
- [4 Documents / Resources](#)
 - [4.1 References](#)
- [5 Related Posts](#)

Installation

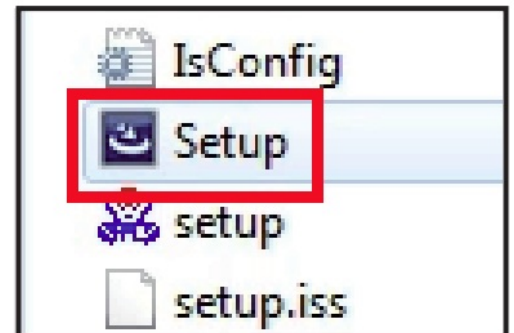
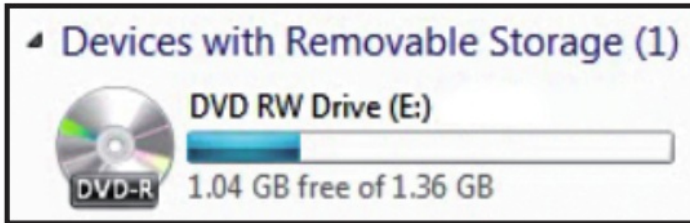
A WiFi driver installation (Page 1 ~ 7)

B: Bluetooth driver installation (Page 8 ~ 14)

Note: This instruction take Windows 7 as an example, other system can refer to these steps.

A: WIFI driver installation:

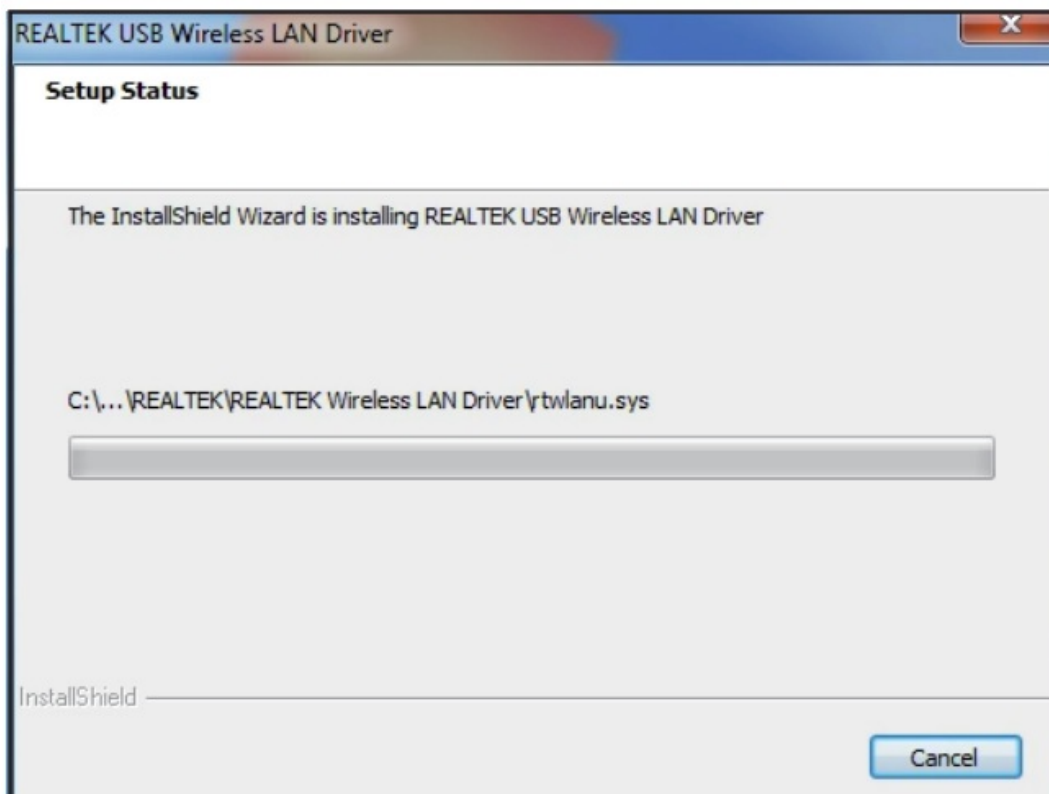
1. Please insert the CD into your CD-ROM driver, find and double click "Setup.exe" as below,

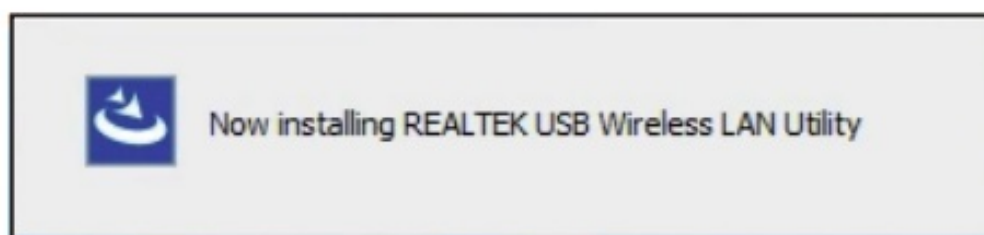
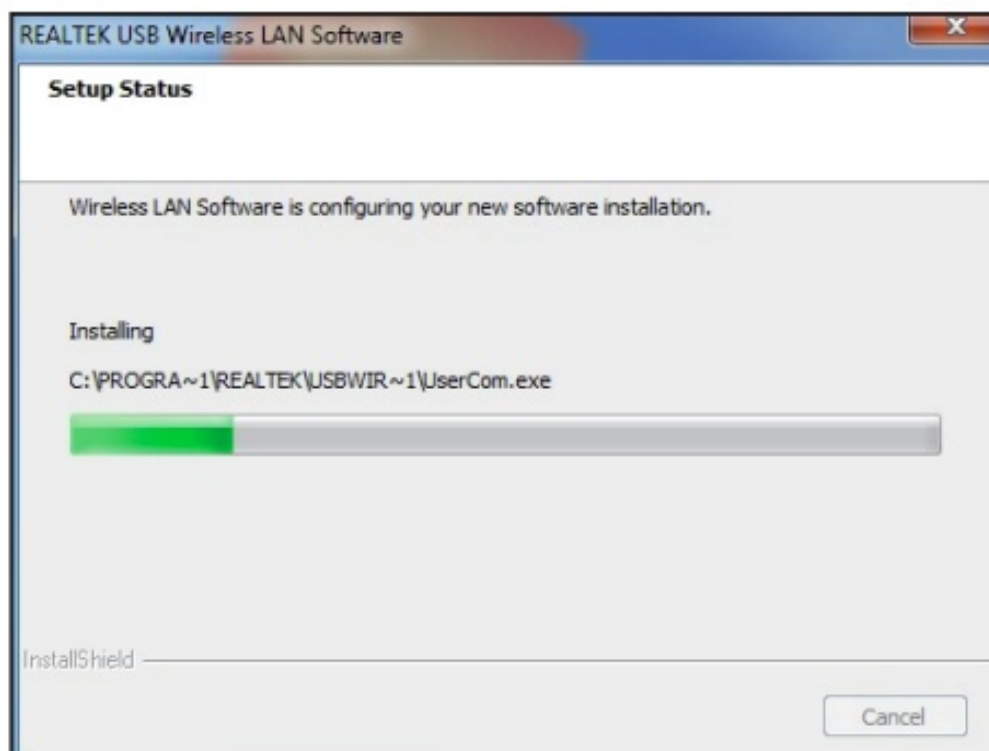


2. Software installation is in preparation:

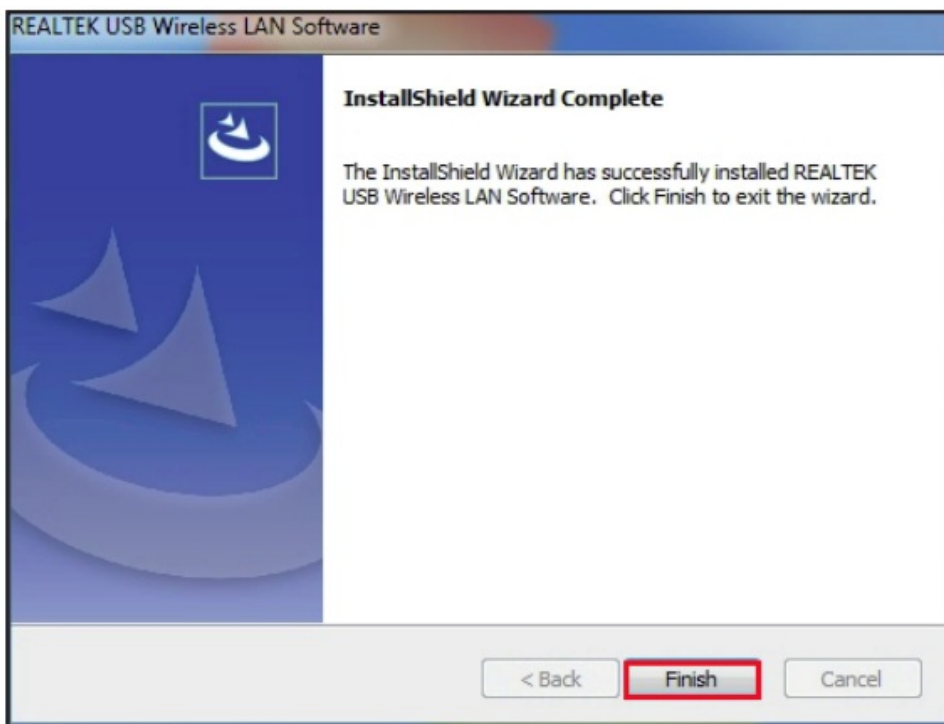


3. Setup Status:






4. The Software Installation is Completed:

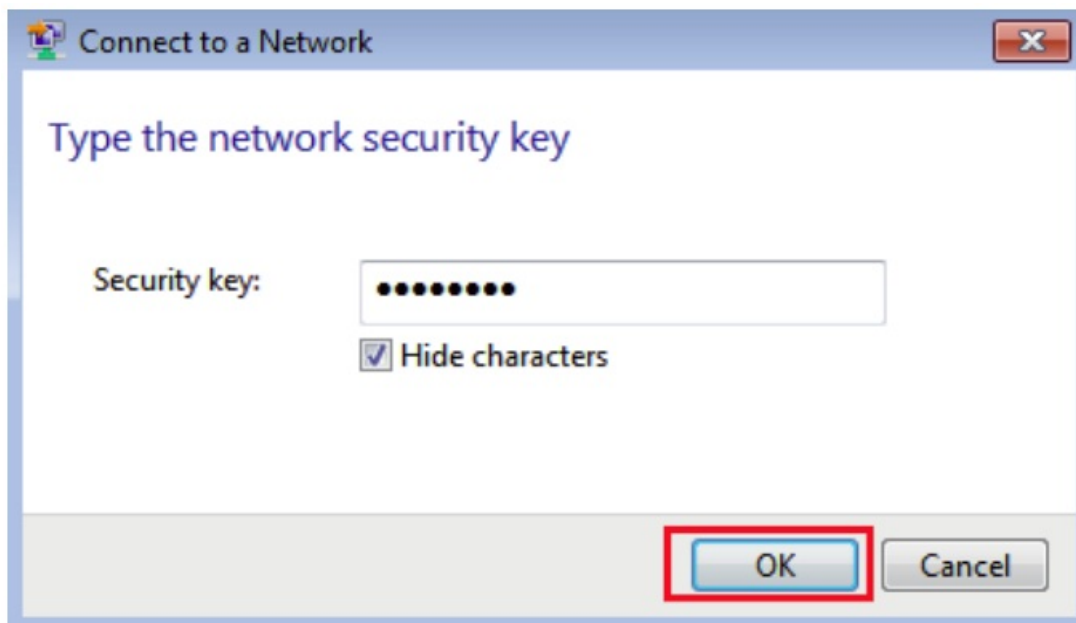


5. How to use Wi-Fi Adapter to connect?

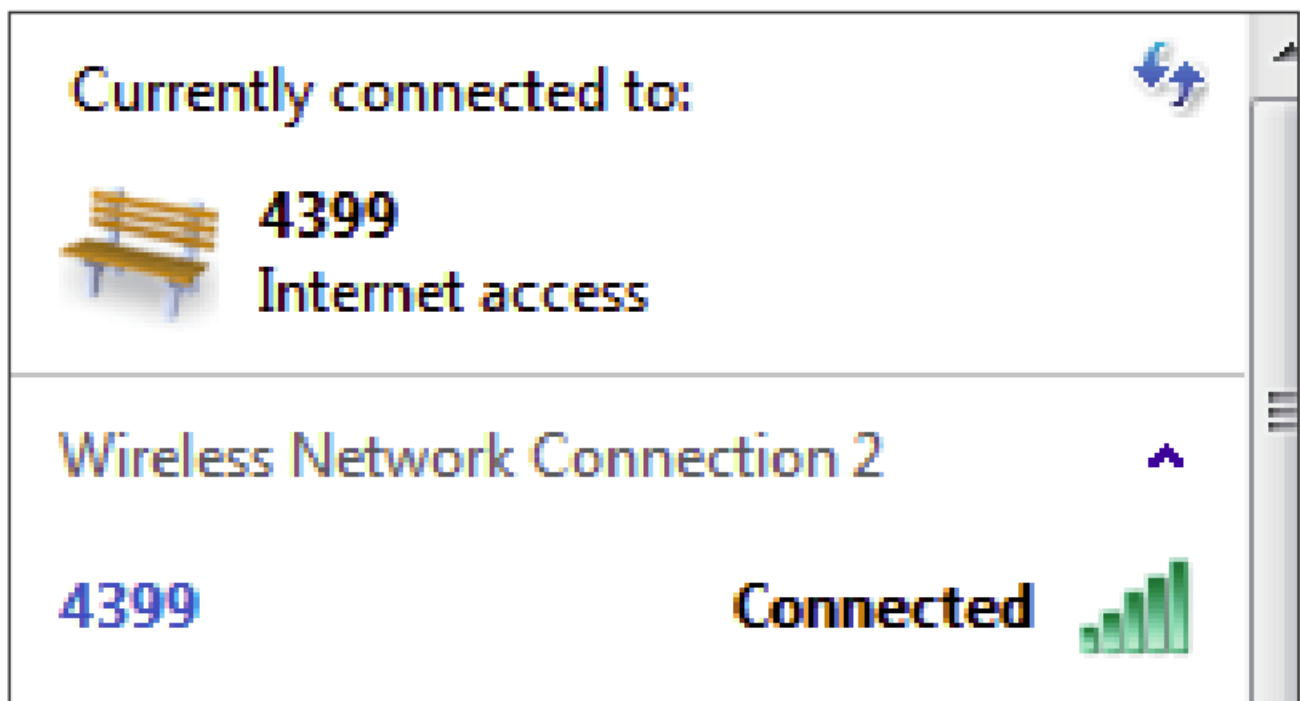
- a. Plug the Wi-Fi Adapter in, click the icon at  the bottom right corner of the computer.
- b. Search and connect to the Wi-Fi you need from the available Wi-Fi list.



- c. Enter the Wi-Fi password to connect.

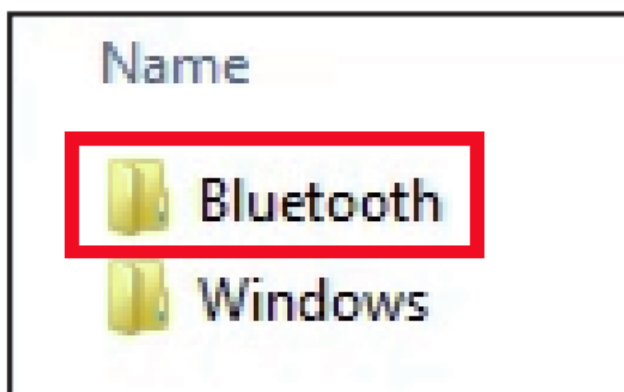


d. Finally your Wi-Fi is connected.

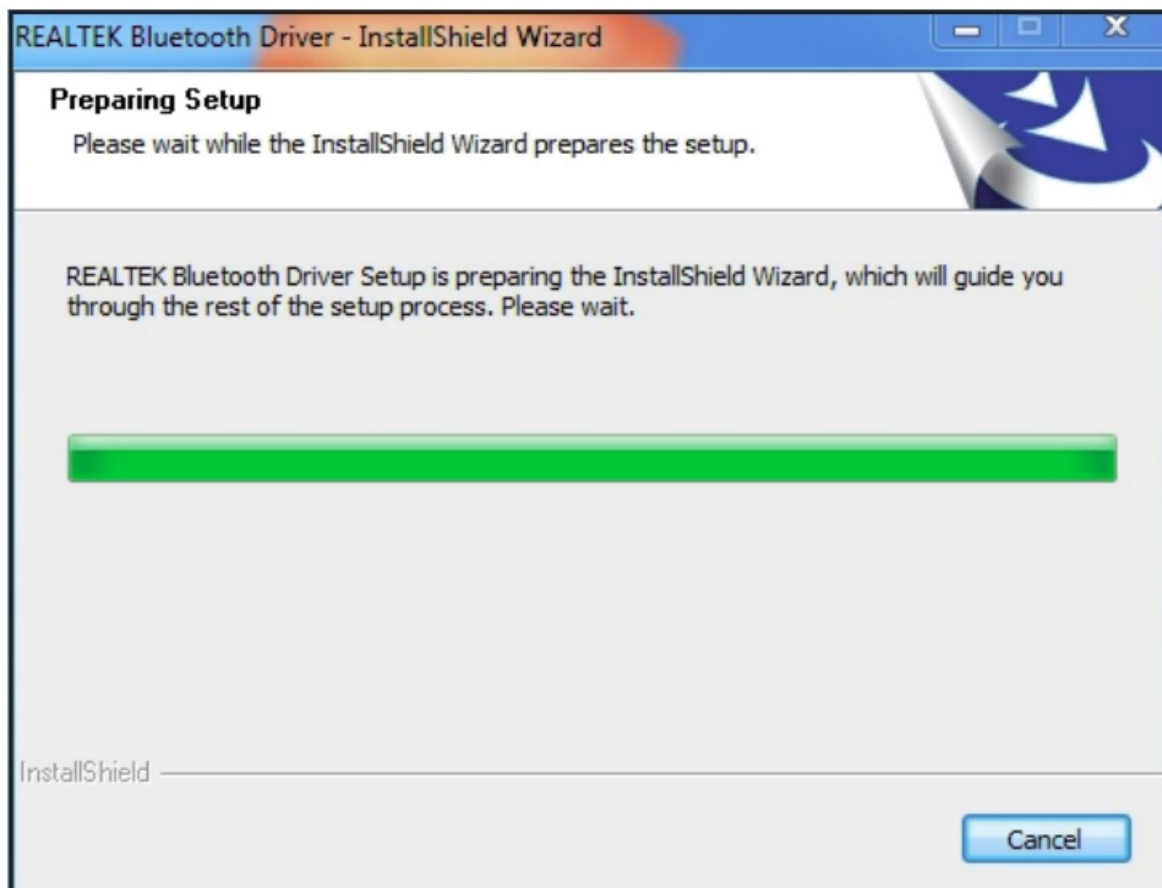


B: Bluetooth driver installation:

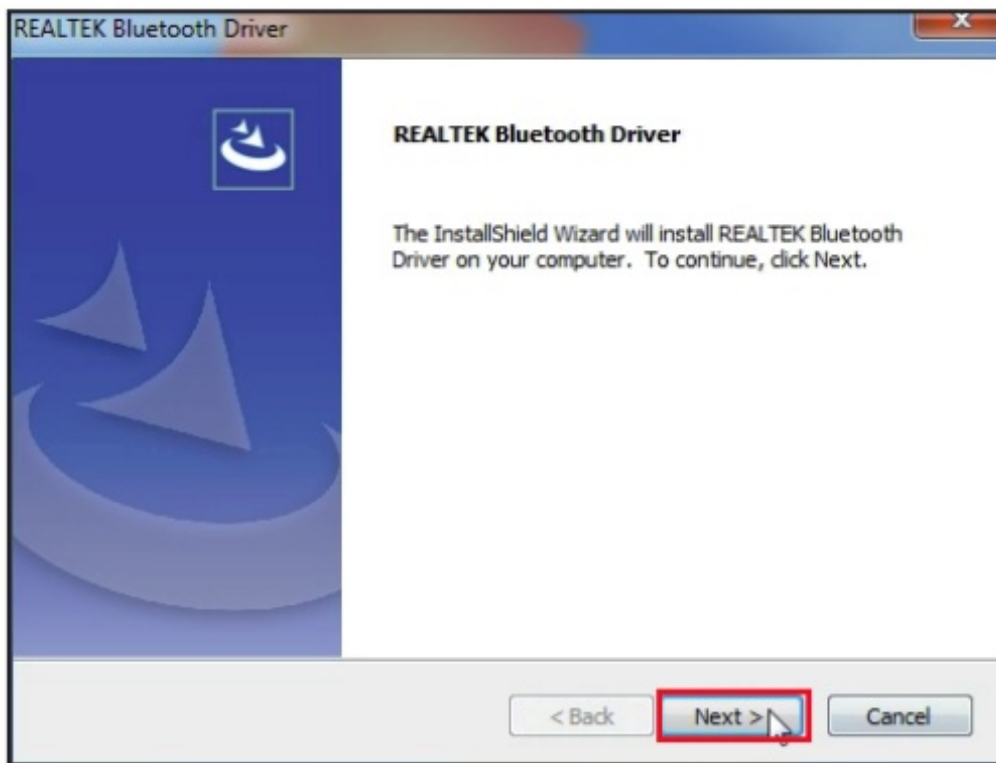
1. Please ensure the Wi-Fi Adapter is plugged in, insert the CD Into your CD-ROM driver, find the bluetooth folder and double click "Setup.exe" as below.



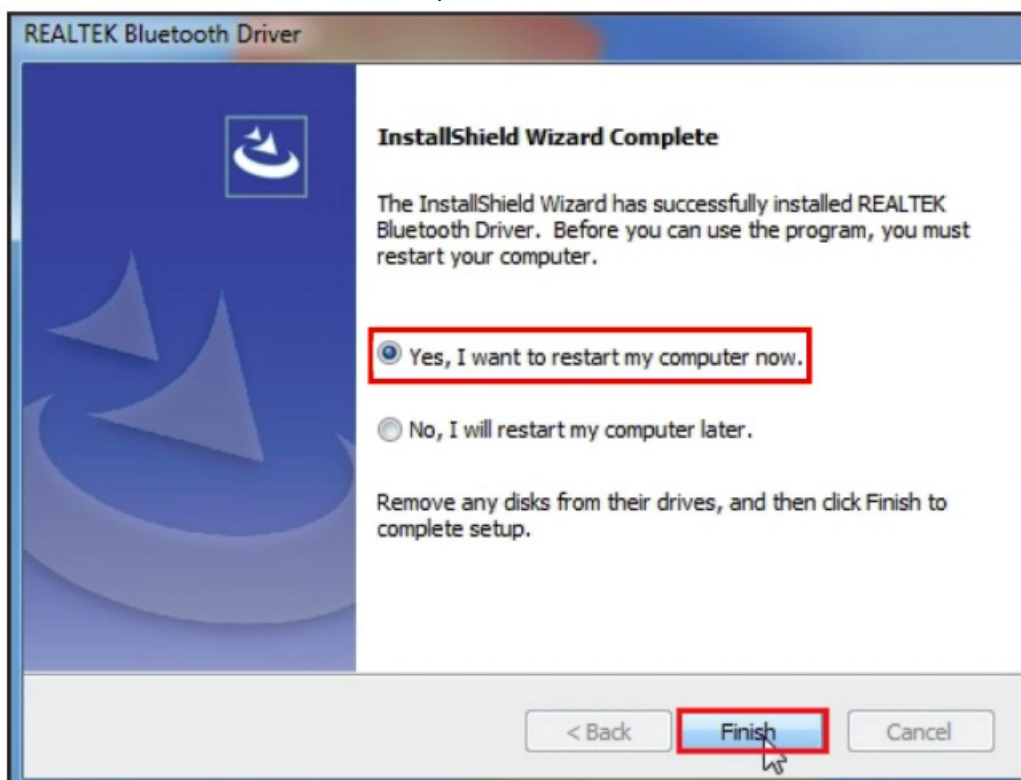
2. Software installation is in preparation:



3. Click "Next" and it will be installing as below:



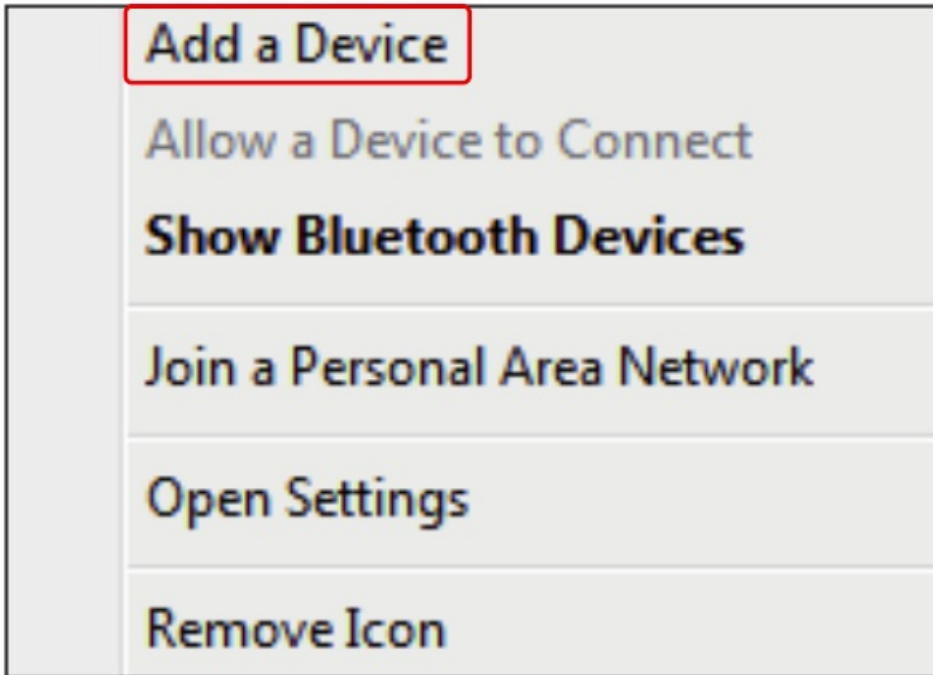
4. Choose Yes, I want to restart computer now



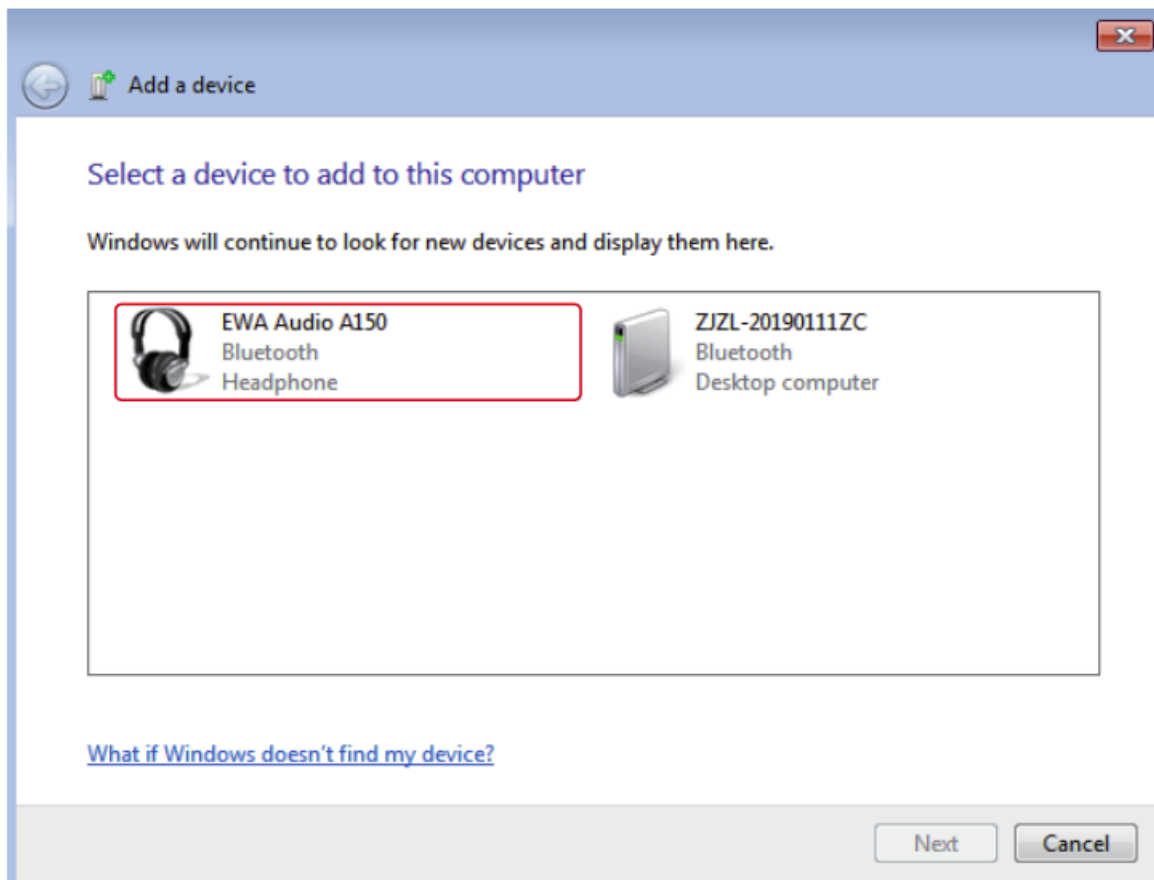
5. Bluetooth Connection:

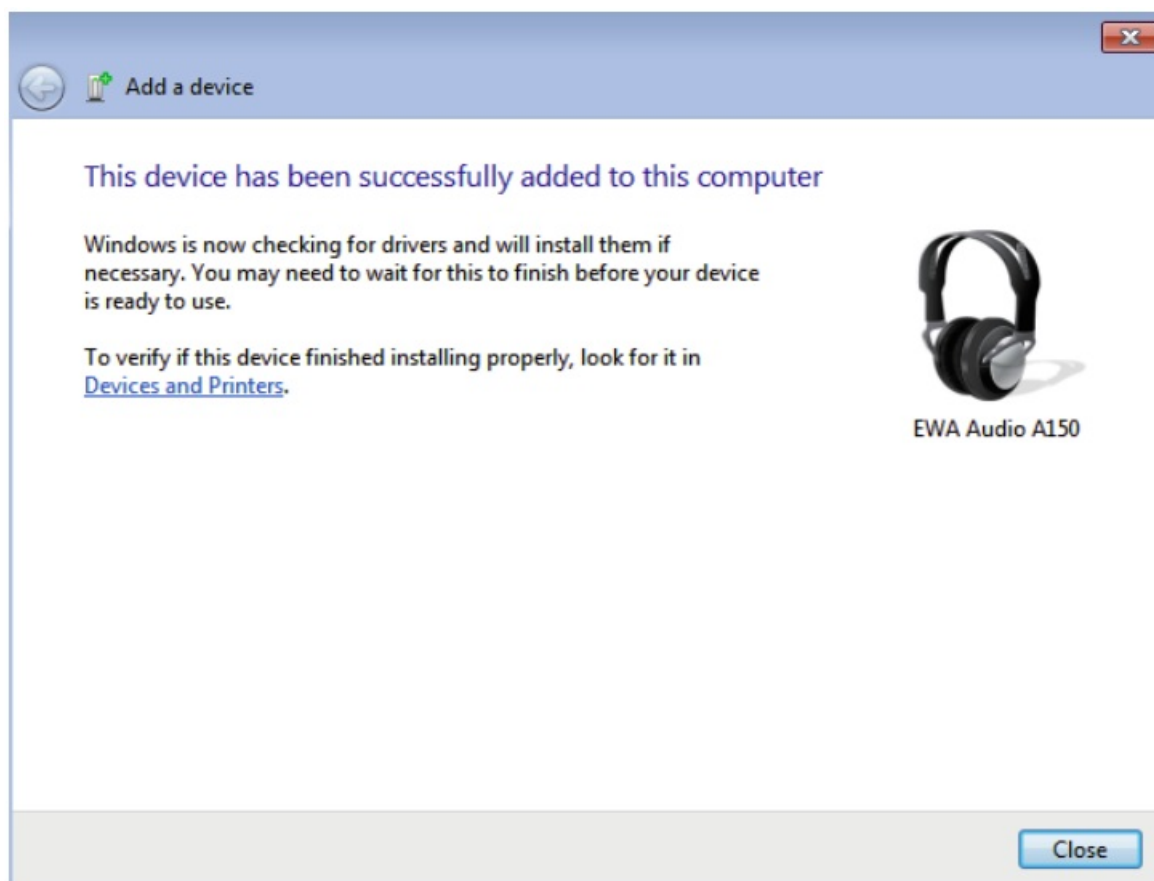


- a. Click the bluetooth icon in the bottom right corner of the computer
- b. Right click the mouse, choose “Add a Device”, and search the Bluetooth
- c. Ensure your bluetooth devices have been turned on and ready to pair.



- d. Bluetooth devices will be detected as below after a while. then double click the icon to pair. (Eg. Bluetooth Earphone)





Install Drivers:

Please plug the wireless adapter into computer first before installing the drivers (WiFi driver or Bluetooth driver).

NOTE: This equipment has been tested and found to comply with the limits for a Class B digital device, pursuant to part 15 of the FCC Rules. These limits are designed to provide reasonable protection against harmful interference in a residential installation. This equipment generates, uses and can radiate radio frequency energy and, if not installed and used in accordance with the instructions, may cause harmful interference to radio communications. However, there is no guarantee that interference will not occur in a particular installation. If this equipment does cause harmful interference to radio or television reception, which can be determined by turning the equipment off and on, the user is encouraged to try to correct the interference by one or more of the following measures:


- Reorient or relocate the receiving antenna.
- Increase the separation between the equipment and receiver.
- Connect the equipment into an outlet on a circuit different from that to which the receiver is connected.
- Consult the dealer or an experienced radio/TV technician for help

Changes or modifications not expressly approved by the party responsible for compliance could void the user's authority to operate the equipment.

This device complies with Part 15 of the FCC Rules. Operation is subject to the following two conditions:

(1) this device may not cause harmful interference, and (2) this device must accept any interference received, including interference that may cause undesired operation.

Documents / Resources

	<p>SHEN ZHEN WB603 Dual Band Wireless Adapter with Bluetooth Function [pdf] User Manual</p> <p>WB603 Dual Band Wireless Adapter with Bluetooth Function, WB603, Dual Band Wireless Adapter with Bluetooth Function, Wireless Adapter with Bluetooth Function, Adapter with Bluetooth Function, Bluetooth Function</p>
---	---

References

- [User Manual](#)