



SHEN ZHEN DCWZC424TC Smart Color Changing Outdoor String Light User Manual

[Home](#) » [SHEN ZHEN](#) » SHEN ZHEN DCWZC424TC Smart Color Changing Outdoor String Light User Manual 

Contents

- [1 SHEN ZHEN DCWZC424TC Smart Color Changing Outdoor String Light](#)
- [2 Wiring diagram](#)
- [3 Remote Control Function description](#)
- [4 Specification](#)
- [5 Packing include](#)
- [6 FCC Statement](#)
- [7 QR SCAN](#)
- [8 Documents / Resources](#)
 - [8.1 References](#)
- [9 Related Posts](#)

SHENZHEN

SHEN ZHEN DCWZC424TC Smart Color Changing Outdoor String Light

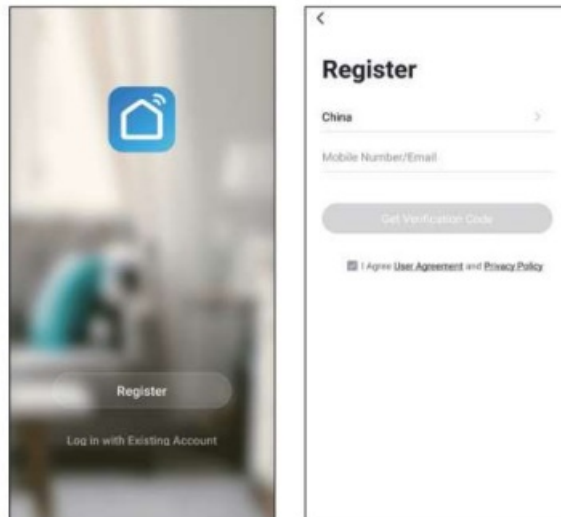


Please read this carefully before using Before going to the next steps, please download the APP by scanning the Above code or simply search keywords: “Smart Life” in the APP” store Or Google Play.

Add devices to the Smart Life APP

Register and Login

Open the Smart Life APP and Log in to your account (sign up for a new account if you don’t have one).



APP connection

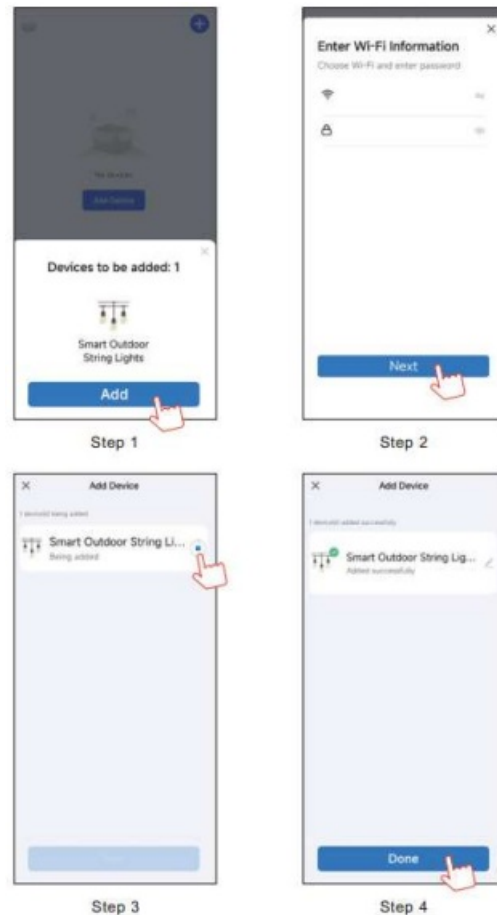
Preparation jobs: Power on the LED lamp and enter the home of APP, please make sure your mobile and the smart kits are connected to the same WIFI.

Connect the LED lamp Solution 1)

1. The LED lamp will flash after powered on, tap the button “Add all devices” on the APP. The APP will popup an interface with tips about the info of LED lamp, tap the “Add” button, it will show the interface of “Bluetooth devices”, then tap the “+” to the next interface and log in with the WiFi password, the devices turn to connect

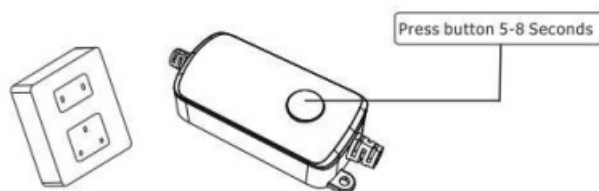
automatically.

- Just wait until pairing is successful and tap “Done” to enter the mode control interface. (If solution 1 is not suitable for your devices, please try solution 2)



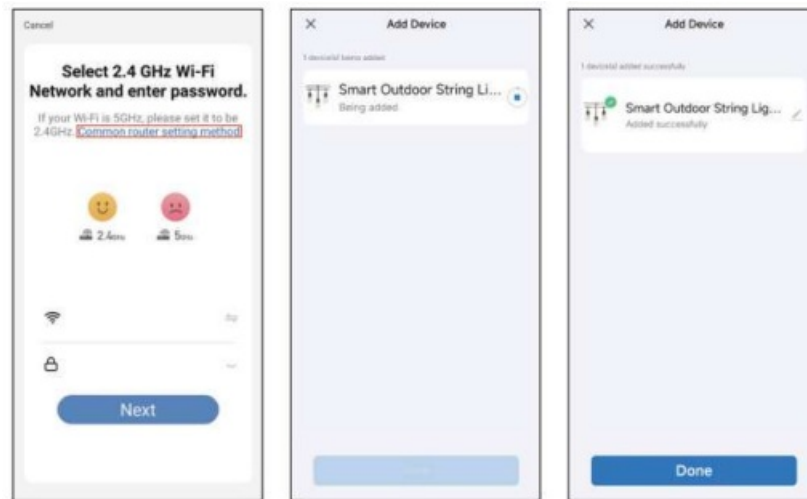
Solution 2)

- The LED lamp will flash after powered on, tap the button “Add all devices” on the APP. Enter into the interface of “Add manually” and choose “Lighting” then the corresponding “LED lamp”.
 - We will turn to the interface of device pairing, log in with the correct WiFi name and password, and tap “Next” (make sure all devices are connected to the same WiFi).
 - Make sure the LED lamp is under quick flash status, then tap “Next” to start pairing. Just wait until pairing success and tap “Done” to enter into the mode control interface
- When the LED lamp does not quickly flash after powered on. Please press the switch button for over 5 seconds, and then the light turns to quick flash, enter into the APP, and choose to add all the devices in the corresponding room in the APP. Enter into the interface of adding a lighting device and match the LED lamp. How to make the Color Changing String Lights into Blinking rapidly status and get ready to pair to The Smart Life APP?



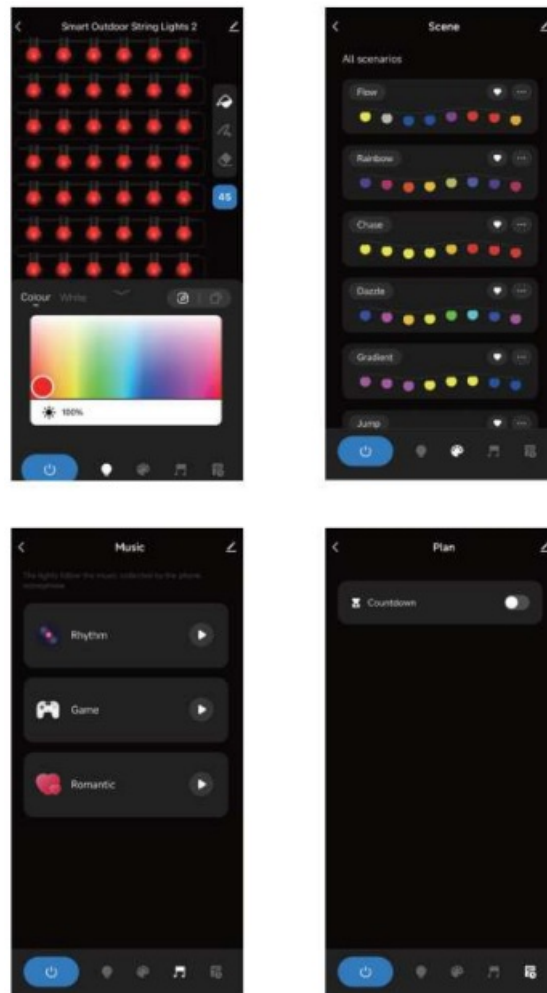
- Power on the color-changing string lights
- Long press the round button on the power adapter for 5-8 seconds
- Long press the button, and all the bulbs appear and blink rapidly in Red color.
Lights are ready to pair, go back to your smart Life APP.
- Enter the WiFi password, tap “next” and wait till the pairing process is done.

(Important tip: The Smart Life APP only supports 2.4GHz signal, the pairing process would fail under a 5GHz signal)



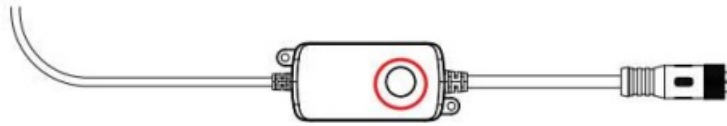
Interface Introduction

The app operating page of String Light has a variety of color selection methods, which can select color individually, select color as a whole, turn off the bulb individually, and adjust the brightness.



Button Function Description:

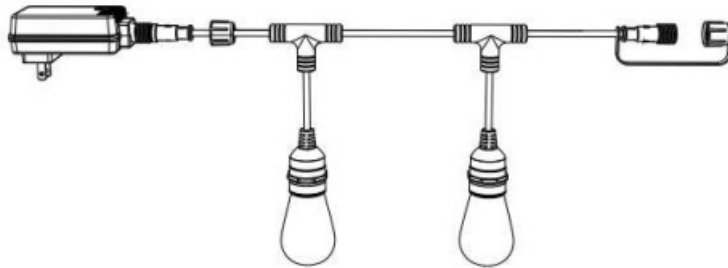
- **Control: single press:** power on-Mode Adjust
- **double press:** power off
- **long press 5 seconds:** reset



Wiring diagram

Model No:

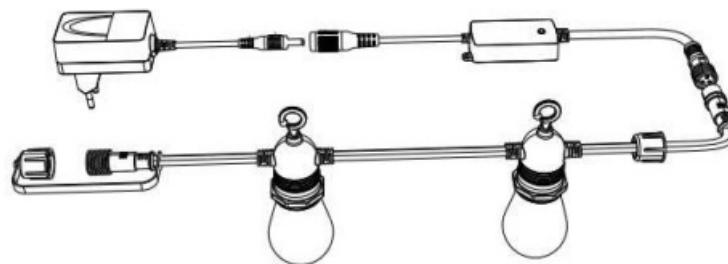
- DCWZB9-24TC
- TIB



DCWZB9-24TC-A



DCWZC4-24TC



The picture is for reference only, it will be subject to the actual product.

Attention

1. Do not cover any metal parts on the power supply to avoid affecting the control signals.
2. This product should not be used in water, be careful of electric shock.
3. Before replacing, please unplug the adapter and let it cool to avoid electric shock or burns.
4. Do not overload! When connecting a string of lamps, the overall maximum power capacity is 45 bulbs (maximum)

5. Please stop twisting the bulbs once the bulbs have been tightened enough, otherwise, it will slip.

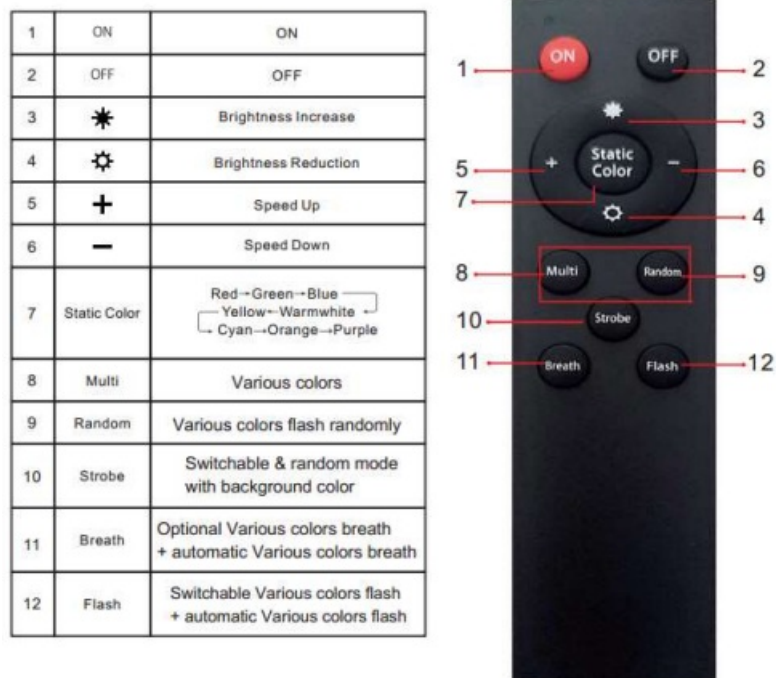
Remote Control Function description

Remote operation instructions:

- This RGBW string light has a memory function.
- Whenever you turn on the light, it will start as the last time when you turn off.

[Important] Request Code Matching Before Using the Remote Controller

1. Power on the light and pair the remote controller with the light within 30 seconds
2. and press the button of “Multi” +”Random” for over 5 seconds at the same time
3. When the lights flash, it means the pairing is successful.



Specification

Item	Rating	Unit
Length	48	ft
Sockets Qty.	15	PCS
Distance from male plug To first sockets	0.67	M
Distance from female plug To last sockets	0.25	M
IP	65/54	-
Bulb materials	PET	-
Bulb voltage	DC12V	V
Max load bulbs qty.	45	PCS
Input voltage	AC100-240	V
Operation temperature	-20~+45	℃
Bulb Type	E26	-
Beam Angle	270°	°
Optimal Remote Distance	48 Ft	Ft

Packing include



A CAUTIONS

- Before replacing it, turn it off and let it cool to avoid electrical shock or burn
- This bulb is not intended for use with emergency exit fixtures rated average life based on engineering testing
- And probability analysis. Risk of electric shock DO NOT USE IT DIRECTLY IN WATER

STRING CABLE WITH BULB IS WATERPROOF 1P65. BUT THE ADAPTER ISN NOT COMPATIBLE WITH INCANDESCENT LIGHT BULBS 1 DOES NOT OVERLOAD! THE OVERALL MAXIMUM WATTAGE CAPACITY WHEN CONNECTING STRING LIGHT SETS IS 45 PC BULBS(MAXIMUM).|

FCC Statement

This device complies with Part 15 of the FCC Rules. Operation is subject to the following two conditions:

1. This device may not cause harmful interference.
2. This device must accept any interference received, including interference that may cause undesired operation.

Changes or modifications not expressly approved by the party responsible for compliance could void the user's authority to operate the equipment.

Note: This equipment has been tested and found to comply with the limits for a class B digital device, under Part 15 of the FCC Rules. These limits are designed to provide reasonable protection against harmful interference in a residential installation. This equipment has been tested and found to comply with the limits for a Class B digital device, under part 15 of the FCC Rules. These limits are designed to provide reasonable protection against harmful interference in a residential installation. This equipment generates, uses, and can radiate radio frequency energy and, if not installed and used by the instructions, may cause harmful interference to radio communications. However, there is no guarantee that interference will not occur in a particular installation. If this equipment does cause harmful interference to radio or television reception, which can be determined by turning the equipment off and on, the user is encouraged to try to correct the interference by one or more of the following measures:

- Reorient or relocate the receiving antenna.
- Increase the separation between the equipment and the receiver.
- Connect the equipment to an outlet on a circuit different from that to which the receiver is connected.
- Consult the dealer or an experienced radio/TV technician for help.

This equipment should be installed and operated with a minimum distance of 20 cm between the radiator and your body

ISED Statement

- This device contains licence-exempt transmitter(s)/receivers) that comply with Innovation,
- Science and Economic Development Canada's license-exempt RSSs). Operation is subject to the following two conditions:

This device may not cause interference.


1. This device must accept any interference, including interference that may cause undesired operation of the device.
2. This equipment should be installed and operated with a minimum distance of 10 cm between the radiator and your body.

QR SCAN

- Smart Color Changing
- Outdoor String Lights



Documents / Resources

	SHEN ZHEN DCWZC424TC Smart Color Changing Outdoor String Light [pdf] User Manual DCWZC424TC Smart Color Changing Outdoor String Light, DCWZC424TC, Smart Color Changing Outdoor String Light, Changing Outdoor String Light, Outdoor String Light, String Light
---	---

References

- [User Manual](#)