

SHEN ZHEN

**BR15 2 in 1 Bluetooth
Transmitter and
Receiver**



SHEN ZHEN BR15 2 in 1 Bluetooth Transmitter and Receiver User Manual

[Home](#) » [SHEN ZHEN](#) » SHEN ZHEN BR15 2 in 1 Bluetooth Transmitter and Receiver User Manual 

Contents

- [1 SHEN ZHEN BR15 2 in 1 Bluetooth Transmitter and Receiver](#)
- [2 Product Usage Instructions](#)
- [3 Frequently Asked Questions](#)
- [4 Product Overview](#)
- [5 Product Features](#)
- [6 Operating instructions](#)
- [7 TX transmission mode](#)
- [8 Technical parameters](#)
- [9 Troubleshooting](#)
- [10 FCC Statement](#)
- [11 Documents / Resources](#)
 - [11.1 References](#)

SHEN ZHEN

SHEN ZHEN BR15 2 in 1 Bluetooth Transmitter and Receiver

**Specifications:**

- Charging voltage: 5V
- Working current: 50 minutes
- Shutdown current: N/A
- Charging times: N/A
- Working times: RX 13 hours / TX 16 hours
- Battery capacity: 240mAh
- Bluetooth version: V5.3
- Bluetooth transmission distance: N/A

Product Information:

The 2 IN 1 Bluetooth Transmitter & Receiver BR15 is a portable Bluetooth transceiver that supports Bluetooth V5.3. It features automatic reconnection to paired devices, a playtime of approximately 13 hours, and the ability to connect to two Bluetooth devices simultaneously.

Product Usage Instructions**Receiver Mode (RX):**

1. Long press the power button for 2 seconds to power on and select RX mode.
2. Pair with your phone by searching for device BR15 in your phone's Bluetooth settings.
3. To play/pause music, click the button.

4. To answer/hang up calls, click the button.
5. To reject phone calls, long press the button for 2 seconds.
6. To switch between your phone and Bluetooth for answering calls, long press the button for 2 seconds.

Transmitter Mode (TX):

1. After powering on, select TX mode.
2. The device will automatically search for and connect to nearby Bluetooth devices.
3. To connect a second device, click the button and follow the instructions.
4. To play music, connect the 3.5mm connector to the sound source and start playing music.

Indicator Light Status:

- RX Mode:
 - Bluetooth 1 and Bluetooth 2 indicator lights flash: waiting for Bluetooth connection
 - Bluetooth 1 indicator light remains on, Bluetooth 2 indicator light is off: a device is connected
 - Both Bluetooth indicator lights remain on: two devices are connected
- TX Mode:
 - Bluetooth 1 and Bluetooth 2 indicator lights flash slowly: waiting for Bluetooth re-connection
 - Bluetooth 1 indicator light remains on, Bluetooth 2 indicator light is off: a device is connected
 - Bluetooth 1 indicator light remains on, Bluetooth 2 indicator light flashing: searching for the second device
 - Both indicator lights remain on: two devices are connected

Clear Bluetooth:

Double click the button to clear the paired Bluetooth device.

Force Reset:

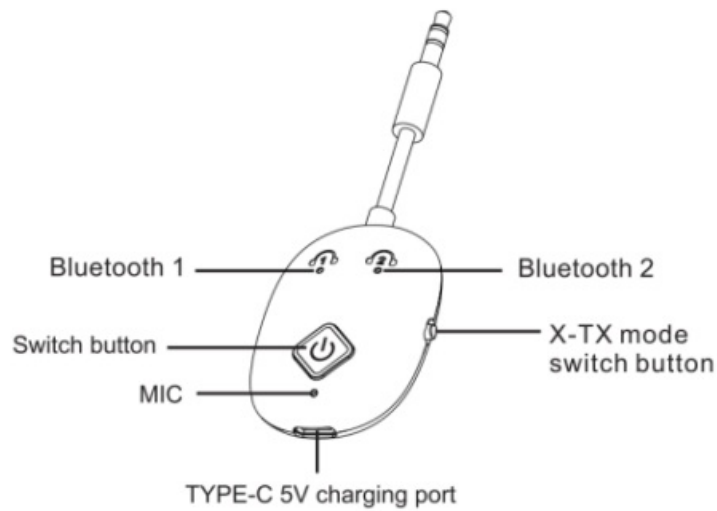
Long press the button for 10 seconds in case of a crash to forcibly reset the product.

Frequently Asked Questions

- **Q: How do I switch between RX and TX modes?**
 - A: For RX mode, long press the power button for 2 seconds to power on. For TX mode, after powering on, select TX mode.
- **Q: How do I clear a paired Bluetooth device?**
 - A: Double-click the button to clear the paired Bluetooth device.
- **Q: How do I answer calls when connected to the Bluetooth device?**
 - A: Click the button to answer calls. To switch between your phone and Bluetooth for answering calls, long press the button for 2 seconds.

Product Overview

Thank you for choosing and purchasing our



company's portable Bluetooth transceiver! Please read the manual carefully before use.

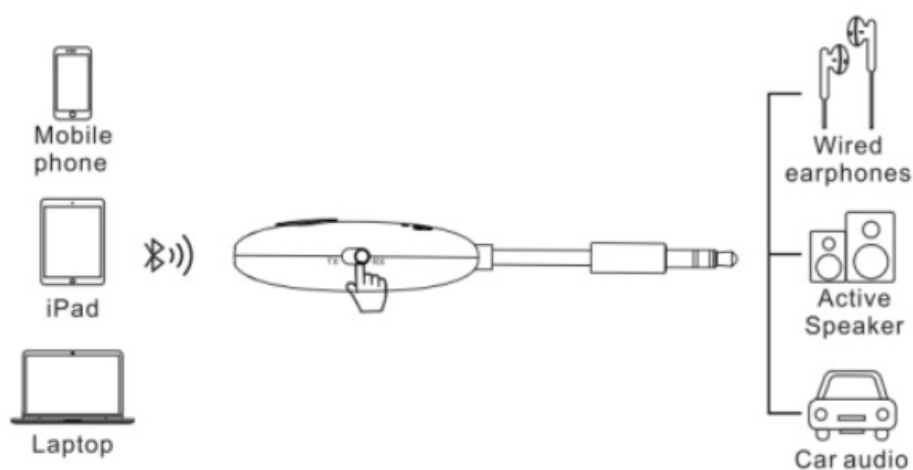
Schematic illustration


Product Features

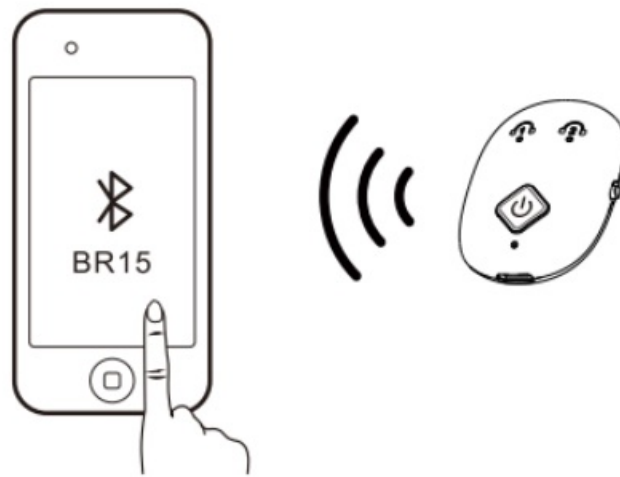
1. Bluetooth V5.3
2. Automatically reconnect to paired Bluetooth devices after powering on
3. Ten minutes without device connection, automatic shutdown
4. Play time: about 13 hours after full charge
5. Private answering
6. Can connect two Bluetooth devices

Operating instructions

RX receiving mode



1. Long press  button 2 seconds to power on, select RX mode, and the Bluetooth indicator light will flash.
2. Open Bluetooth on your phone and search for device "BR15", click "BR15" to pair



Bluetooth indicator light 1 remains on when the B Bluetooth connection is successful, the first device is paired. Connect the second device, open Bluetooth on your other phone and search for the device name “BR15”, click to pair Bluetooth indicator light 2 remains on when the Bluetooth connection is successful, the second device is paired

3. Music playback Insert the audio cable into the amplifier, speaker, AUX hole in the car, or other player, and click on your phone’s music playback to enjoy the music



4. Pause/Play click button



5. Answer/hang up calls click button.

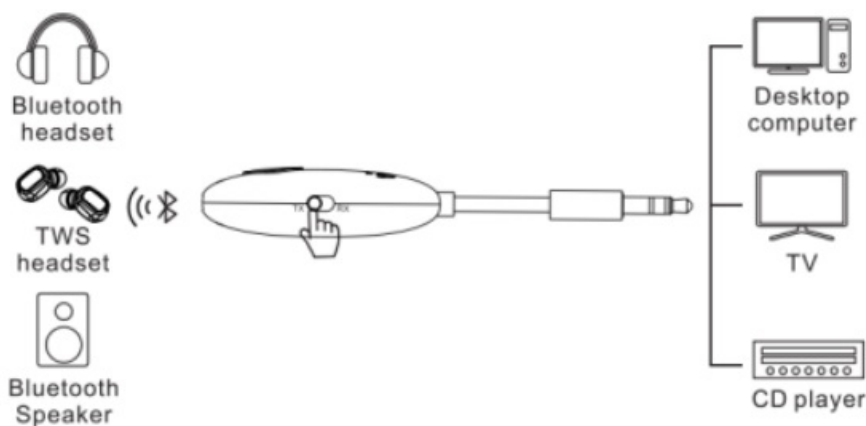


6. Reject phone calls long-press button 2 seconds s

7. Private answering: when you want to answer a call using your own phone long press the” button 2 seconds can switch between your phone and Bluetooth.

*Caution: When you want to play music from another phone, you need to pause the current phone’s music and then click to play music from another phone

TX transmission mode



1. After power on, select TX mode
2. The product will automatically search for and connect to nearby Bluetooth devices (such as Bluetooth earphones,

and Bluetooth speakers). After a successful connection, Bluetooth indicator light 1 will remain on.



3. Second device connection, click button, and the Bluetooth indicator light 2 flashes, starting to search and connect to nearby Bluetooth devices. After a successful connection, Bluetooth indicator light 2 remains on

*If the second device is not successfully connected after 2 minutes of searching, the search will automatically stop.

4. Music playback

Connect the 3.5mm connector with the sound source (mobile phone, MP3 computer, etc.) and play music



*Caution Playing in TX mode button unable to control music and phone calls

Indicator light status:

RX mode

- Bluetooth 1 and Bluetooth 2 indicator lights flash: waiting for

Bluetooth connection

1. Bluetooth 1 indicator light remains on, Bluetooth 2 indicator light is off: a device is connected
2. The Bluetooth 1 and Bluetooth 2 indicator lights remain on: two devices are connected.

TX mode

- Bluetooth 1 and Bluetooth 2 indicator lights flash slowly: waiting for Bluetooth re-connection
- Bluetooth 1 and Bluetooth 2 indicator lights flash quickly:

Bluetooth search status

- Bluetooth 1 indicator light remains on, Bluetooth 2 indicator light is off: a device is connected
- Bluetooth 1 indicator light remains on, Bluetooth 2 indicator light flashing: searching for the second device
- Two indicator lights remain on: two devices are connected. The red light remains on during charging and goes off after fully charged.

Clear Bluetooth



Double click button to clear the paired Bluetooth device

Low battery prompt/automatic shutdown

1. In RX mode, when the battery level is low, the red light starts to flash, and the voice prompt for the low battery

- level is given once every 30 seconds. After 5 consecutive prompts, the device shut down automatically.
2. In TX mode, when the battery is low, the red light starts flashing and automatically shuts down after 2 minutes.
 3. If there is no device connection or other button operation for 10 minutes after the product is turned on, the product will automatically shut down.

Force reset



Long press button for 10 seconds in case of a crash, the product will be forcibly reset and shut down, then restart

Technical parameters

Charging voltage	5V
Working current	16mA±2mA
Shutdown current	15uA±2uA
Charging times	50 minutes
Working times	RX13H / TX16H
Battery capacity	240mAh

Bluetooth version	Version 5.3
Bluetooth transmission distance	straight line10M

Troubleshooting

No response to power on	<ul style="list-style-type: none">·long press the power button again·Plug in the charging cable to charge the product for 5 minutes before turning it on
Can't play	<ul style="list-style-type: none">·Please ensure that the connected device is working properly·Clear Bluetooth pairing and re-pair Bluetooth·Is the audio cable plugged in properly
Can't charge	<ul style="list-style-type: none">· Please unplug the charging cable and reinsert it·Try another charger

Warm tips

1. Do not use this product in a dusty and humid environment with extremely high and low temperatures.
2. Do not drop the product to avoid surface damage or breakdown.
3. Do not disassemble the product, if you have any questions, please contact your dealer
4. Due to continuous improvement and enhancement of technology, changes in product performance and functionality are subject to change without notice.

Packaging accessories

FCC Statement

Instructions 2 Main device 3 TYPE C charging cable

NOTE: This equipment has been tested and found to comply with the limits for a Class B digital device, pursuant to part 15 of the FCC Rules. These limits are designed to provide reasonable protection against harmful interference in a residential installation. This equipment generates, uses, and can radiate radio frequency energy and, if not installed and used in accordance with the instructions, may cause harmful interference to radio communications. However, there is no guarantee that interference will not occur in a particular installation. If this equipment does cause harmful interference to radio or television reception, which can be determined by turning the equipment off and on, the user is encouraged to try to correct the interference by one or more of the following measures:

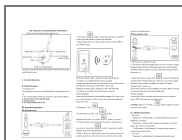
- Reorient or relocate the receiving antenna.
- Increase the separation between the equipment and the receiver.
- Connect the equipment to an outlet on a circuit different from that to which the receiver is connected.
- Consult the dealer or an experienced radio/TV technician for help

Changes or modifications not expressly approved by the party responsible for compliance could void the user's authority to operate the equipment.

This device complies with Part 15 of the FCC Rules. Operation is subject to the following two conditions:

1. this device may not cause harmful interference, and
2. this device must accept any interference received, including interference that may cause undesired operation.

Documents / Resources



[SHEN ZHEN BR15 2 in 1 Bluetooth Transmitter and Receiver](#) [pdf] User Manual
2AEYD-BR15, 2AEYDBR15, BR15 2 in 1 Bluetooth Transmitter and Receiver, BR15, 2 in 1 Bluetooth Transmitter and Receiver, Bluetooth Transmitter and Receiver, Transmitter and Receiver, Receiver, Transmitter

References

- [User Manual](#)