



Shen Zhen Hidin Technology TB41 Wi-Fi Switch Module User Manual

[Home](#) » [Shen Zhen Hidin Technology](#) » Shen Zhen Hidin Technology TB41 Wi-Fi Switch Module User Manual 

Contents

- [1 Shen Zhen Hidin Technology TB41 Wi-Fi Switch Module](#)
- [2 Package Includes](#)
- [3 Specifications](#)
- [4 Indicator light meaning](#)
- [5 Product Diagram](#)
- [6 Wiring Diagram](#)
- [7 Install the “Smart Life”APP](#)
- [8 Setup Guide](#)
- [9 APP operation interface](#)
- [10 FCC Warning](#)
- [11 Documents / Resources](#)
- [12 Related Posts](#)



Shen Zhen Hidin Technology TB41 Wi-Fi Switch Module



Package Includes

- 1x WIFI Switch Module
- 1x User Manual

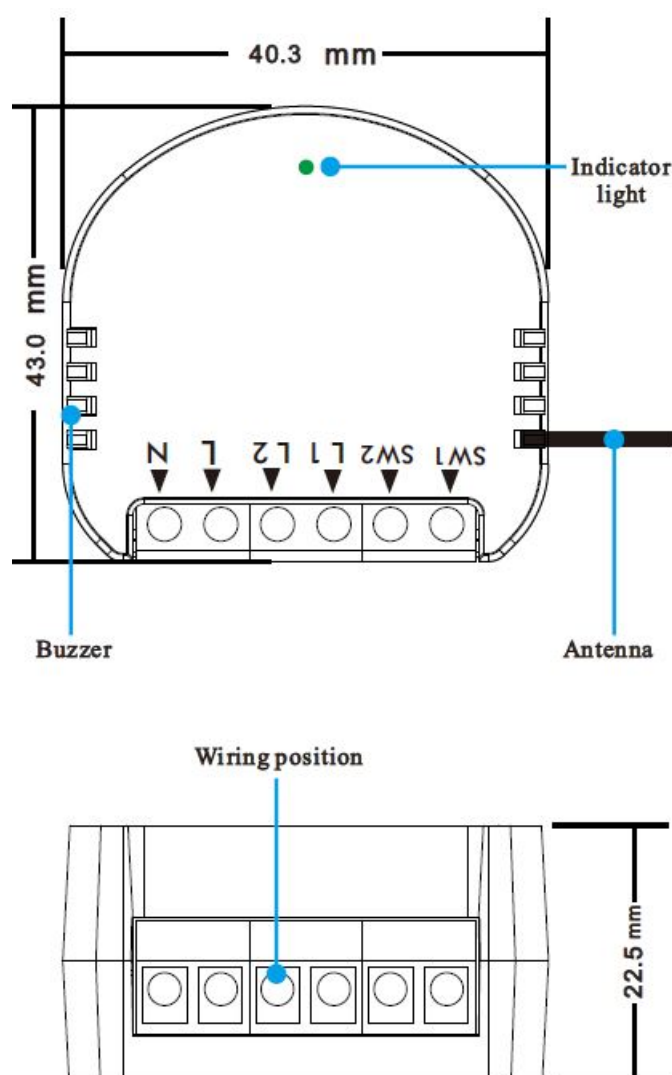
Specifications

Type	WIFI Switch Module
Model	TB41
Power supply mode	Neutral+Live Wire
Rated Voltage	AC100-250V~50/60Hz
Rated Power	INC 1200W (Max) LED 150W/ Gang (Max)
Wireless Frequency	2.4GHZ
Wireless Standard	IEEE802.11 b/g/n
Size	40.3*43*22.5mm

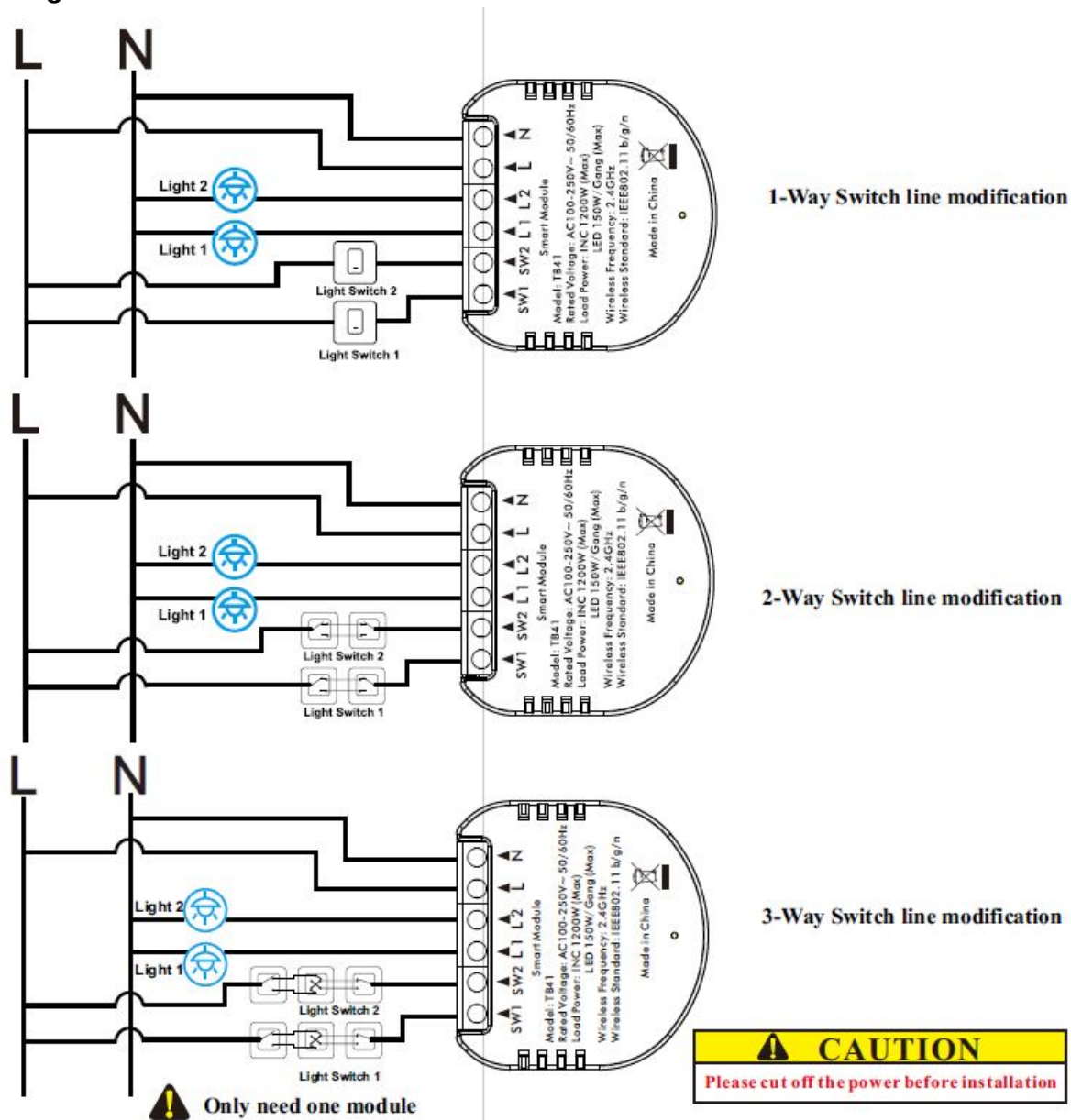
Indicator light meaning

Indicator	Status	Discription
Buzzer sound	Di Di, Di Di, ,...	Ready for connection (Default Mode Only)
Buzzer sound	Di Di Di Di,Di Di Di Di,	Ready for connection (AP Mode Only)
Green light	Flash Rapidly (2 times per second)	Ready for connection (Default Mode Only)
Green light	Flash Slowly (1 time every 3 S)	Ready for connection (AP Mode Only)

Product Diagram



Wiring Diagram



Install the “Smart Life”APP

Download the “Smart life”

1. Download and launch the “Smart life” App from the App Store or Google Play. or scan the QR code below. (The free app “Smart Life” is compatible with mobile devices that support IOS8.0 above, Android 4.4 above)



2. Create a new account.
3. Connect you mobile device to a 2.4GHz Wi-Fi network.

Note: This product only support 2.4G networks.

Setup Guide

Easy Setup

- In the app, select the + icon.(Figure 1)
- Select the device type Electrician ,and then tap Switch(WI-FI) (Figure 2)

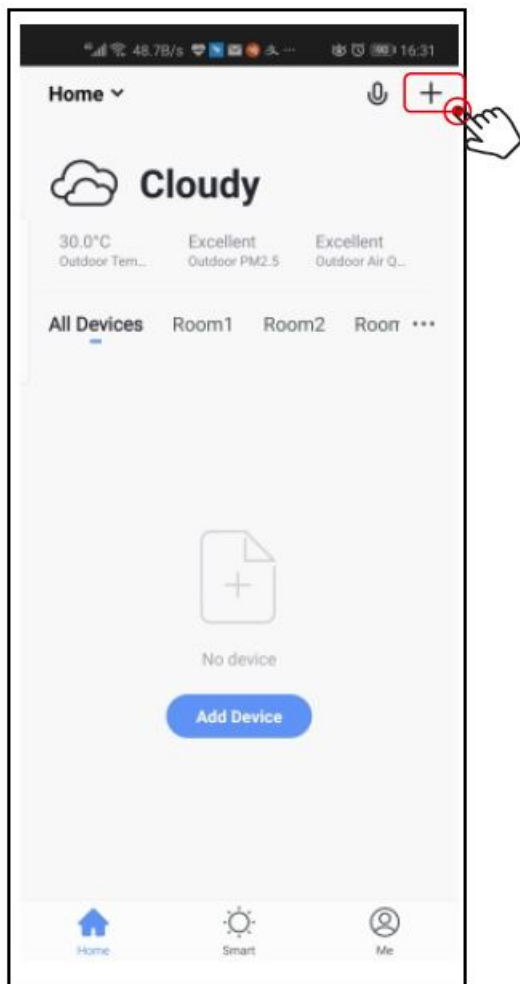


Figure 1

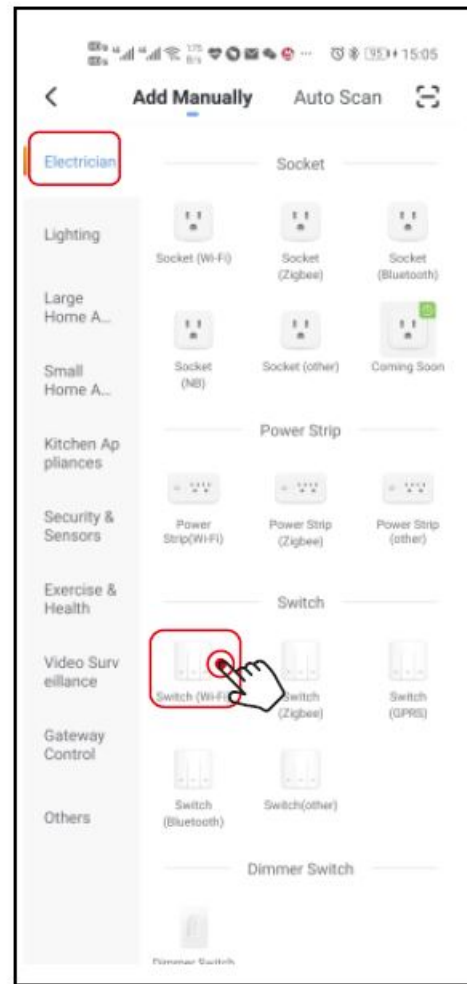


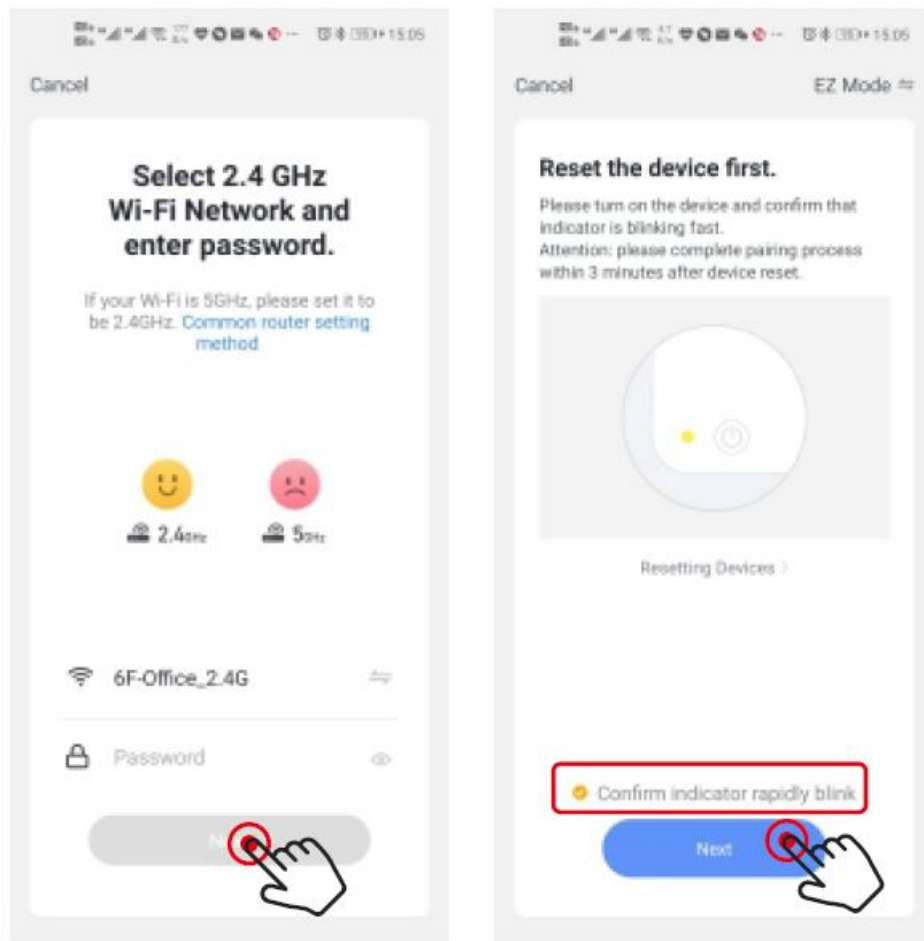
Figure 2

Default Mode(Recommend)



Quick ON/OFF
four times(Totally move 8 times)
(Buzzer sound: Di Di , Di Di ,,,,,)

- Step 1.Make sure the buzzer sound “Di Di ,Di Di, Di Di,” if not, Quick ON/OFF four times for reset.



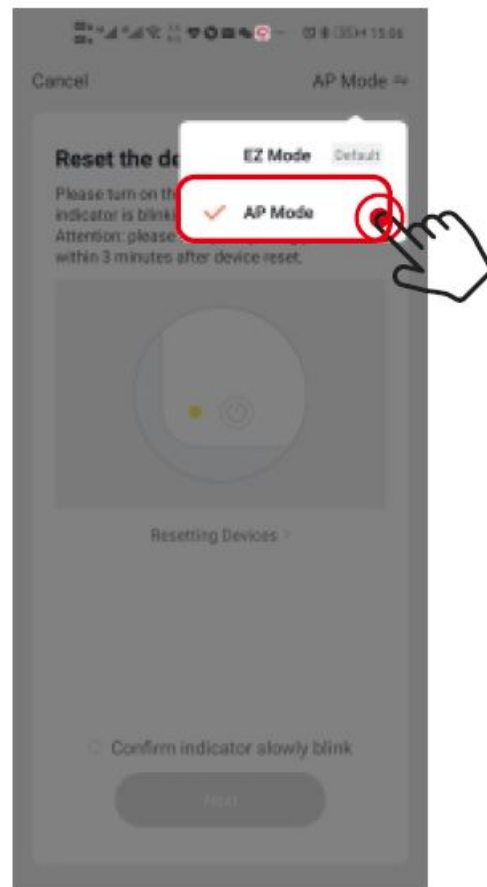
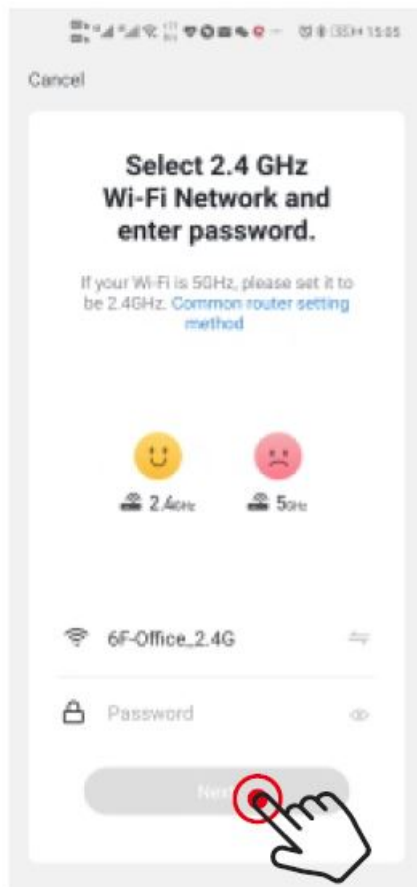
- Step.2 .Enter Wi-Fi password to join your network
- Step.3 Power on the
- device and confirm
- Step4.Follow the prompts to complete the next step.

AP Mode(Alternative)



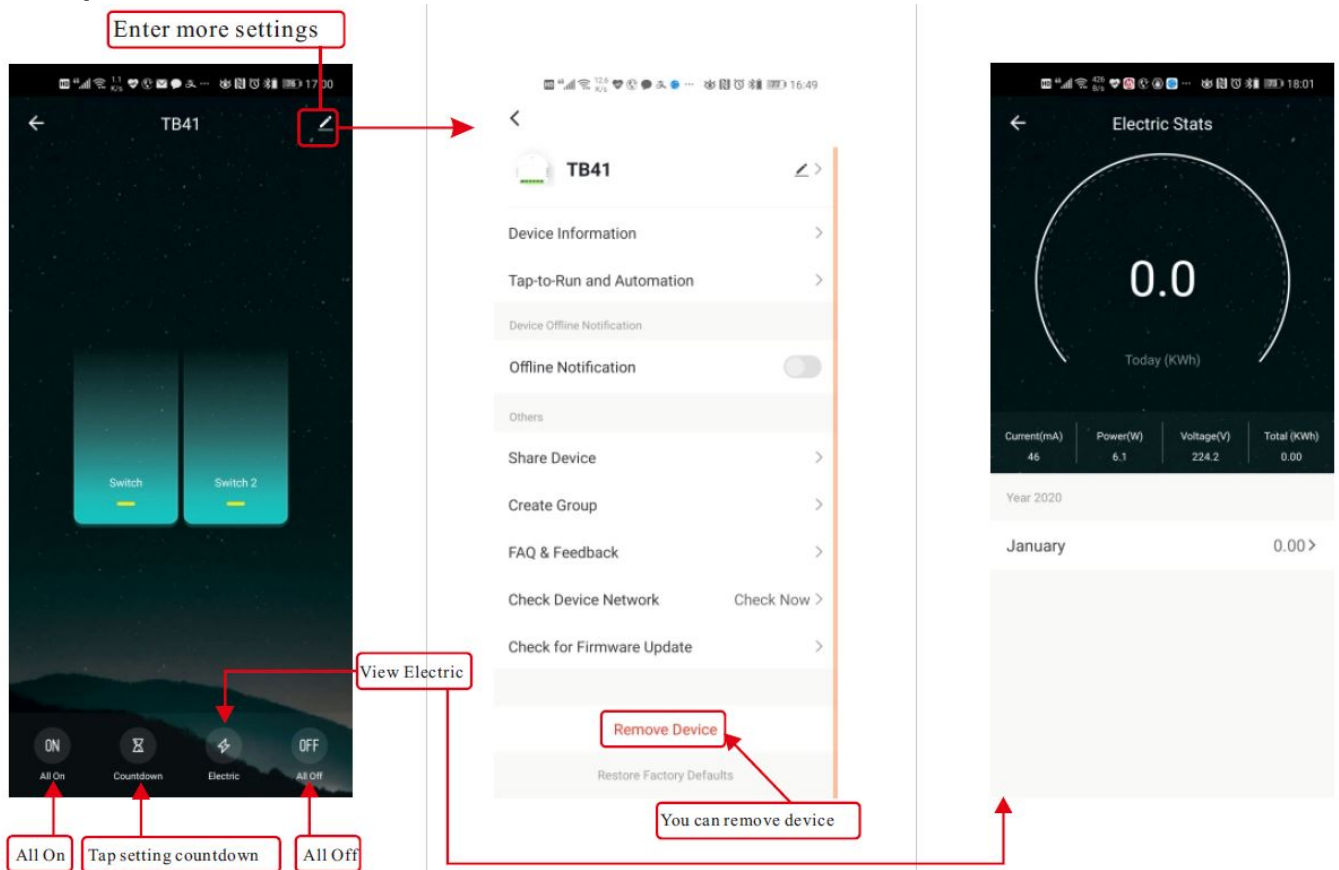
Once again quick ON/OFF four times(Totally move 8 times)
(Buzzer sound: Di Di Di Di,
Di Di Di Di, ,....)

- Step 1.When the buzzer sound “Di Di ,Di Di, Di Di,...” once again quick ON/OFF four times. until the buzzer sound: Di Di Di Di, Di Di Di Di,....



- Step2. Enter Wi-Fi password to join your network
- Step3. Select “AP Mode”
- Step4. Follow the prompts to complete the next step.

APP operation interface



FCC Warning

This device complies with part 15 of the FCC rules. Operation is subject to the following two conditions:

1. this device may not cause harmful interference, and
2. this device must accept any interference received, including interference that may cause undesired operation.

Changes or modifications not expressly approved by the party responsible for compliance could void the user's authority to operate the equipment.


NOTE: This equipment has been tested and found to comply with the limits for a Class B digital device, pursuant to part 15 of the FCC Rules. These limits are designed to provide reasonable protection against harmful interference in a residential installation. This equipment generates uses and can radiate radio frequency energy and, if not installed and used in accordance with the instructions, may cause harmful interference to radio communications. However, there is no guarantee that interference will not occur in a particular installation. If this equipment does cause harmful interference to radio or television reception, which can be determined by turning the equipment off and on, the user is encouraged to try to correct the interference by one or more of the following measures:

- Reorient or relocate the receiving antenna.
- Increase the separation between the equipment and receiver.
- Connect the equipment into an outlet on a circuit different from that to which the receiver is connected.
- Consult the dealer or an experienced radio/TV technician for help.

Radiation Exposure Statement

This equipment complies with FCC radiation exposure limits set forth for an uncontrolled environment. This equipment should be installed and operated with minimum distance 20cm between the radiator and your body.

Documents / Resources

	Shen Zhen Hidin Technology TB41 Wi-Fi Switch Module [pdf] User Manual TB41, 2AHRET41, TB41 Wi-Fi Switch Module, TB41, Wi-Fi Switch Module
---	--