



Shelly YBLUMOT Smart Motion Sensor User Manual

[Home](#) » [Shelly](#) » Shelly YBLUMOT Smart Motion Sensor User Manual 

Contents

- [1 Shelly YBLUMOT Smart Motion Sensor](#)
- [2 Legend](#)
- [3 USER AND SAFETY GUIDE](#)
- [4 Product Introduction](#)
- [5 Installation Instructions](#)
- [6 First steps](#)
- [7 Using Shelly BLU Motion](#)
- [8 Initial Inclusion](#)
- [9 Replacing the battery](#)
- [10 Troubleshooting](#)
- [11 Specifications](#)
- [12 Declaration of conformity](#)
 - [12.1 FCC Radiation Exposure Statement](#)
- [13 Documents / Resources](#)
 - [13.1 References](#)
- [14 Related Posts](#)



Shelly YBLUMOT Smart Motion Sensor



Specifications

- Product Name: Shelly BLU Motion
- Device Type: Smart Bluetooth motion detection sensor
- Features: Lux meter
- Usage: Indoor use only
- Connectivity: Wireless connection to electric circuits and appliances
- Range: Up to 30m outdoors, up to 10m indoors

Legend

-

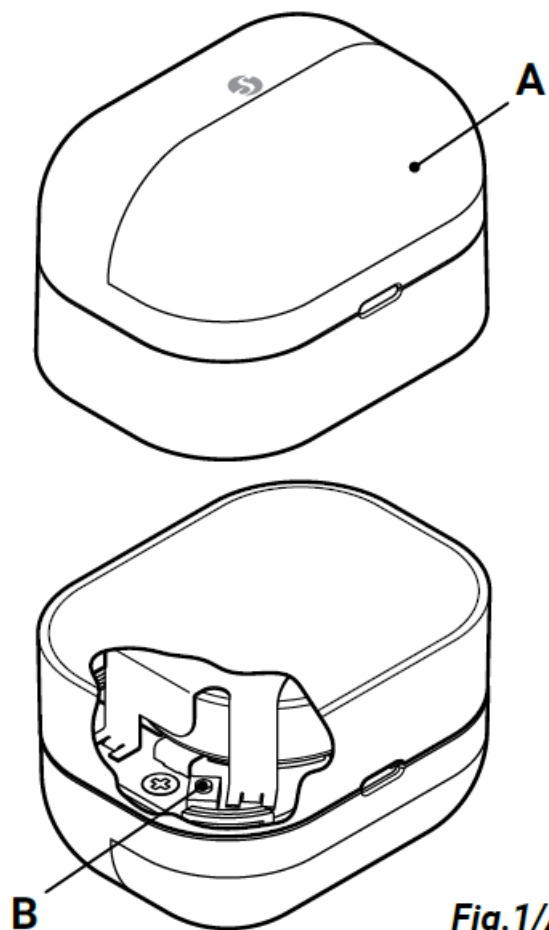
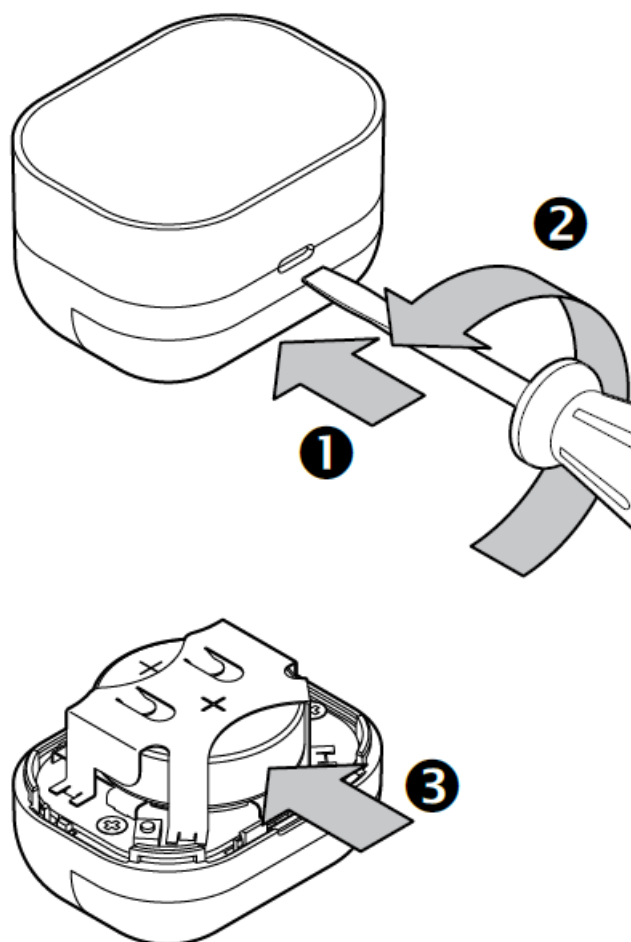


Fig.1/Abb.1

A: Motion sensor lens (light sensor and LED indicator behind the lens)

- B: Control button (behind the back cover)



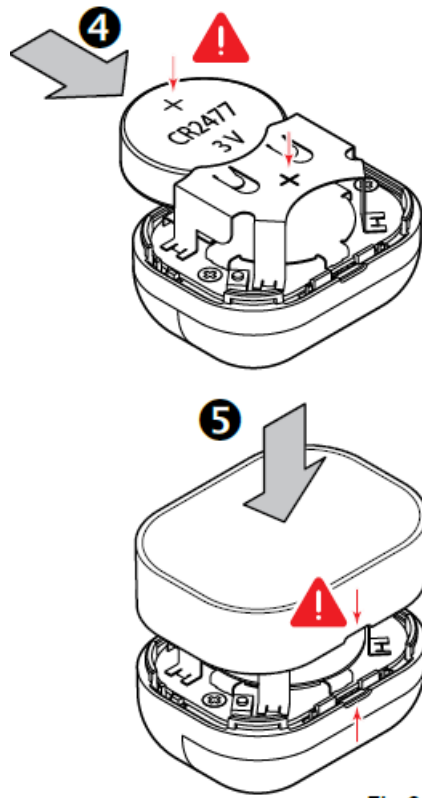


Fig.2/Abb.2

USER AND SAFETY GUIDE

Shelly BLU Motion

Read before use

This document contains important technical and safety information about the device, its safe use and installation.

- **CAUTION!** Before beginning the installation, please read carefully and entirely this guide and any other documents accompanying the device. Failure to follow the installation procedures could lead to malfunction, danger to your health and life, violation of law or refusal of legal and/or commercial guarantee (if any). Shelly Europe Ltd is not responsible for any loss or damage in case of incorrect installation or improper operation of this device due to failure of following the user and safety instructions in this guide.
- Shelly® devices are delivered with factory-in-stalled firmware. If firmware updates are necessary to keep the devices in conformity, including security updates, Shelly Europe Ltd will provide the updates free of charge through the device
- Embedded Web Interface or the Shelly mobile application, where the information about the current firmware version is available. The choice to install or not the device firmware updates is the user's sole responsibility. Shelly Europe Ltd shall not be liable for any lack of conformity of the device caused by failure of the user to install the provided updates in a timely manner.

Product Introduction

Shelly BLU Motion (the Device) is a smart Bluetooth motion detection sensor featuring a lux meter. (fig.1)

Installation Instructions

- **CAUTION!** The Device is intended for in-door use only!

- **CAUTION!** Keep the Device away from liquids and moisture. The Device shouldn't be used in places with high humidity.
- **CAUTION!** Do not use it if the Device has been damaged!
- **CAUTION!** Do not attempt to service or repair the Device yourself!
- **CAUTION!** The Device may be connected wirelessly and may control electric circuits and appliances. Proceed with caution! Ir-responsible use of the Device may lead to malfunction, danger to your life or violation of the law.

First steps

Shelly BLU Motion comes ready to use with the battery installed.

However, you might need to insert a battery if you do not see the LED indicator behind the motion sensor lens flashing red when you move in front of it.

See the Replacing the battery section.

Using Shelly BLU Motion

If motion is detected the LED indicator will flash red briefly and the Device will broadcast information about the event, the illumination, and the battery status at the time of the motion detection. The Device will not broadcast for a minute (user configurable), although motion detection will cause the LED indicator to flash red.

- **NOTICE!** The LED indication can be dis-abled in the Device settings.
- If no motion is detected within the next minute, it will broadcast information about the lack of motion, the illumination, and the battery status at the time of broadcasting. If the Device is with beacon mode enabled, it will broadcast
- information about the current motion detection, the illumination, and the battery status every 30 seconds.
- To pair Shelly BLU Motion with another Blue-tooth device press and hold the control but-ton for 10 sec.
- You have to open the Device to access the control button.
- See the Replacing the battery section.
- The Device will await connection for the next minute. The available Bluetooth characteristics are described in the official Shelly API documentation at <https://shelly.link/ble>
- Active pairing mode is indicated by brief blue flashes.
- To restore the device configuration to factory settings, press and hold the control button for 30 seconds shortly after inserting the battery.
- If you want to check the motion detection range or the communication with the Device, double-press the control button to set the Device in test mode. For a minute, the Device will broadcast every motion detection, indicating it by a red flash.
- Find the best location for the Device and use the supplied double-sided foam stickers to affix it.

Initial Inclusion

NOTICE! If you choose to use the Device with the Shelly Smart Control mobile application, you must have at least one permanently powered Shelly Wi-Fi and Bluetooth (Gen2 or following) device, which during installation should be referred to as a Bluetooth gateway. You can find instructions on how to connect the Device to the Cloud and control it through the Shelly Smart Control app in the mobile application guide.

The Shelly mobile application and Shelly

Cloud service are not conditions for the De-vice to function properly. This Device can be used standalone or with various other home automation platforms which support Theme protocol.
For more information visit bthome.io

Replacing the battery

CAUTION! Use only 3 V CR2477 or a compatible battery! Pay attention to the battery polarity!

1. Insert a 3 to 5 mm wide flat blade screw-driver in the slot, as shown in Fig. 2.
2. Carefully turn the screwdriver to pop open the back cover of the Device.
3. Extract the exhausted battery by pushing it out of its holder.
4. Slide in a new battery.
5. Replace the back cover by pressing it against the main body of the Device until you hear a clicking sound.

CAUTION! Make sure the small cutout on the back cover is on the same side as the matching cutout on the main body as shown in Fig. 2!

Troubleshooting

In case you encounter problems with the installation or operation of Shelly BLU Motion, please check its knowledge base page: https://shelly.link/blu-motion_kb

Specifications

- Dimensions (HxWxD): 32x42x27 mm / 1.26x1.65x1.06 in
- Weight: 26 g / 0.92 oz (with battery)
- Ambient temperature: from -20 °C to 40 °C / from -5 °F to 105 °F
- Humidity 30 % to 70 % RH
- Power supply: 1x 3 V CR2477 battery (included)
- Battery life: 5 years
- Radio protocol: Bluetooth
- RF band: 2402 – 2480 MHz
- Beacon function: Yes
- Encryption: AES encryption (CCM mode)
- Operational range (depending on local conditions):
 - up to 30 m outdoors
 - up to 10 m indoors

Declaration of conformity

Hereby, Shelly Europe Ltd. (former Allterco Robotics EOOD) declares that the radio equipment type Shelly BLU Motion is in compliance with Directive 2014/53/EU, 2014/35/EU, 2014/30/EU, 2011/65/EU. The full text of the EU declaration of conformity is available at the following internet address:

<https://shelly.link/blu-motion-DoC>

FCC Radiation Exposure Statement

This equipment complies with FCC radiation exposure limits set forth for an uncontrolled environment. This equipment should be in-stalled and operated with minimum distance 20cm between the radiator & your body. FCC Warning

This device complies with Part 15 of the FCC Rules.

Operation is subject to the following two conditions:

1. This device may not cause harmful interference, and
2. this device must accept any interference received, including interference that may cause undesired operation.

Note: This equipment has been tested and found to comply with the limits for a Class B digital device, pursuant to part 15 of the FCC Rules. These limits are designed to provide reasonable protection against harmful interference in a residential installation. This equipment generates, uses and can radiate radio frequency energy and, if not installed and used in accordance with the instructions, may cause harmful interference to radio communications. However, there is no guarantee that interference will not occur in a particular installation. If this equipment does cause harmful interference to radio or televi-sion reception, which can be determined by turning the equipment off and on, the user is encouraged to try to correct the interference by one or more of the following measures:

- Reorient or relocate the receiving antenna.
- Increase the separation between the equip-ment and receiver.
- Connect the equipment into an outlet on a circuit different from that to which the receiver is connected.
- Consult the dealer or an experienced radio/TV technician for help.
- NOTE 2: Any changes or modifications to this unit not expressly approved by the party responsible for compliance could void the user's authority to operate the equipment. Manufacturer: Shelly Europe Ltd.
- Address: 103 Cherni Vrah Blvd., 1407 Sofia, Bulgaria
- Tel.: +359 2 988 7435

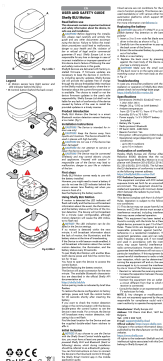
E-mail: support@shelly.cloud

Official website: <https://www.shelly.com> Changes in the contact information data are published by the Manufacturer on the official website.






<https://www.shelly.com>

All rights to the trademark Shelly® and other intellectual rights associated with this Device belong to Shelly Europe Ltd.

Documents / Resources

	<p>Shelly YBLUMOT Smart Motion Sensor [pdf] User Manual YBLUMOT Smart Motion Sensor, YBLUMOT, Smart Motion Sensor, Motion Sensor, Sensor</p>
---	--

References

-  [BTHome: Open standard for broadcasting sensor data over Bluetooth LE](#)
-  [Shelly BLE devices](#)
-  [ShellyBLU Motion](#)
-  [ShellyBLU Motion](#)
-  [Shelly - Shelly](#)
- [User Manual](#)