

*Shelly*  
**RCB4 Smart  
Bluetooth Button**



# Shelly RCB4 Smart Bluetooth Button User Guide

[Home](#) » [Shelly](#) » Shelly RCB4 Smart Bluetooth Button User Guide 

## Contents

- 1 Shelly RCB4 Smart Bluetooth Button
- 2 Specifications:
  - 2.1 FAQ
  - 2.2 Safety information
  - 2.3 Product Description
  - 2.4 Mounting on a switch box (US standard)
  - 2.5 Replacing the battery
  - 2.6 Specifications
  - 2.7 Shelly Cloud inclusion
  - 2.8 Troubleshooting
- 3 Documents / Resources
  - 3.1 References

*Shelly*

**Shelly RCB4 Smart Bluetooth Button**



### **Specifications:**

- Product Name: Shelly BLU RC Button 4 US
- Type: Smart Bluetooth four-button control interface

### **Product Description**

1. Place the magnetic holder on the switch box and fix it with screws.
2. Attach the switch decorative plate using the magnetic holder.
3. Mount on flat surfaces by following the provided instructions.

### **Replacing the Battery:**

1. Remove the screw securing the battery cover.
2. Gently slide open the battery cover as indicated.
3. Remove the exhausted battery and insert a new one.

### **Shelly Cloud Inclusion:**

Contact customer support for assistance with Shelly Cloud inclusion.

### **Troubleshooting:**

If you encounter any issues, refer to the troubleshooting section in the manual or contact customer support for

help.

## FAQ

### Q: Can I use rechargeable batteries with the device?

A: No, only use batteries that comply with all applicable regulations. Using inappropriate batteries can cause damage to the device and fire.

### Q: What should I do if the device shows signs of damage?

A: Do not use the device and contact customer support for guidance. Do not attempt to repair the device yourself.

## User and safety guide Shelly BLU RC Button 4 US Smart Bluetooth four-button control interface

### Safety information

For safe and proper use, read this guide, and any other documents accompanying this product. Keep them for future reference. Failure to follow the installation procedures can lead to malfunction, danger to health and life, violation of law, and/or refusal of legal and commercial guarantees (if any). Shelly Europe Ltd. is not responsible for any loss or damage in case of incorrect installation or improper operation of this device due to failure to follow the user and safety instructions in this guide.



This sign indicates safety information.



This sign indicates an important note.



#### **WARNING!**



- **INGESTION HAZARD:** This product contains a button cell or coin battery.
- **DEATH** of serious injury can occur if ingested.
- A swallowed button cell or coin battery can cause Internal Chemical Burns in as little as 2 hours.
- **KEEP** new and used batteries OUT OF REACH of CHILDREN.
- Seek immediate medical attention if a battery is suspected to be swallowed or inserted inside any part of the body.



**CAUTION!** Make sure batteries are installed correctly according to polarity + and -.



**WARNING!** Do not attempt to charge non-rechargeable batteries. Charging non-rechargeable batteries can cause an explosion or fire, leading to serious injury or death.



**WARNING!** Do not force discharge, recharge, disassemble, or heat batteries. Doing so may result in injury due to venting, leakage, or explosion, causing chemical burns.



**WARNING!** Do not mix old and new batteries, different brands, or types of batteries, such as alkaline, carbon-zink, or rechargeable batteries.



**WARNING!** If the Device will not be used for an extended period, remove the battery. Reuse it if it still has power, or dispose of it according to local regulations if it is exhausted.



**WARNING!** Always completely secure the battery compartment. If the battery compartment does not close securely, stop using the product, remove the batteries, and keep them away from children.



**WARNING!** Even used batteries may cause severe injury or death. If a battery is suspected to be swallowed, contact your local poison control center immediately for treatment information.



**CAUTION!** Use the Device only with batteries that comply with all applicable regulations. Using inappropriate batteries can cause damage to the Device and fire.



**CAUTION!** Batteries can emit hazardous compounds or cause fire if not disposed of properly. Remove and immediately recycle or dispose of used batteries according to local regulations and keep them away from children. Do NOT dispose of batteries in household trash or incinerate them.



**CAUTION!** Do not use the Device if it shows any sign of damage or defect.



**CAUTION!** Do not attempt to repair the Device yourself.

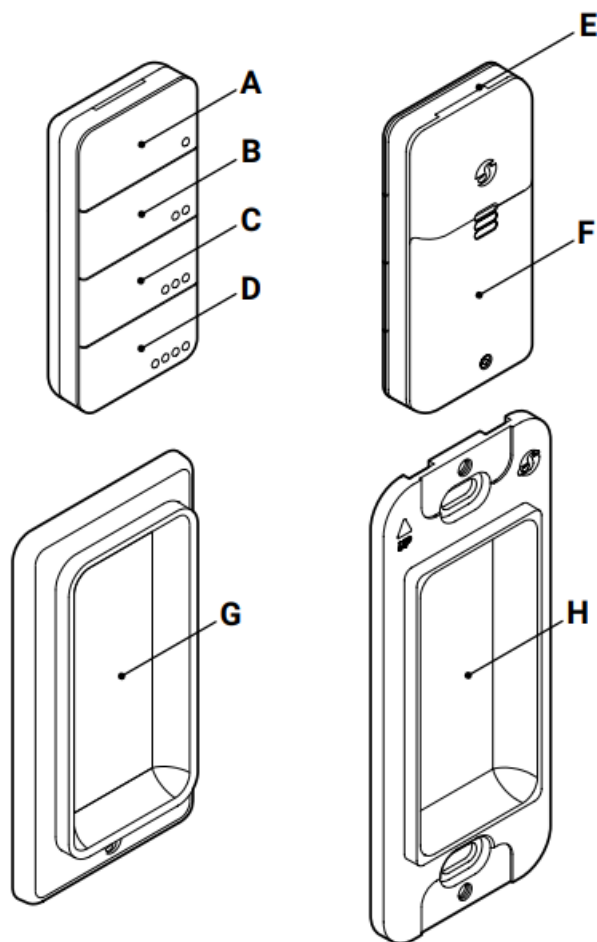
## Product Description

Shelly BLU RC Button 4 US (the Device) is a smart four-button Bluetooth remote control interface. It features a long battery life, multi-click control, and strong encryption. The Device comes with two magnetic holders:

- Holder that attaches to any flat surfaces using the included double-sided foam sticker (Fig. 1G).
- Holder that fits into standard US wall switch boxes (Fig. 1H). Both holders and the Device itself can attach to any surface that has magnetic properties.



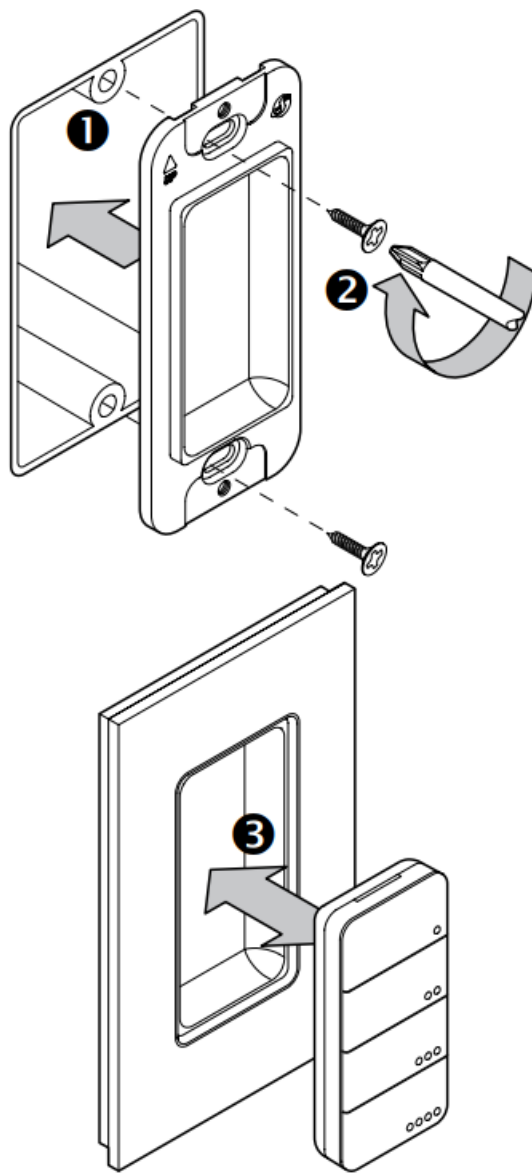
The Device comes with factory-installed firmware. To keep it updated and secure, Shelly Europe Ltd. provides the latest firmware updates free of charge. Access the updates through the Shelly Smart Control mobile application. Installation of firmware updates is the user's responsibility. Shelly Europe Ltd. shall not be liable for any lack of conformity of the Device caused by the failure of the user to install the available updates promptly.



**Fig. 1**

- **A:** Button 1
- **B:** Button 2
- **C:** Button 3
- **D:** Button 4
- **E:** LED indicator
- **F:** Battery cover
- **G:** Magnetic holder (for flat surfaces)
- **H:** Magnetic holder (for wall switch boxes)

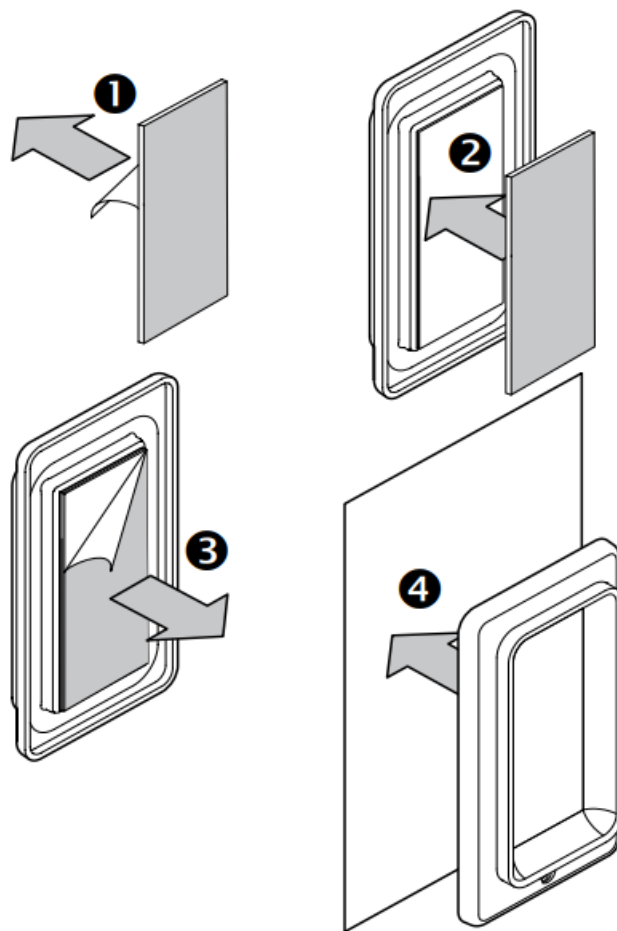
### **Mounting on a switch box (US standard)**



**Fig. 2**

1. Place the magnetic holder (Fig. 1 H) on the switch box as shown in Fig. 2.
2. Fix the holder to the switch box using two screws.
3. Now you can attach the switch decorative plate and use the magnetic holder to store the device.

### **Mounting on flat surfaces**



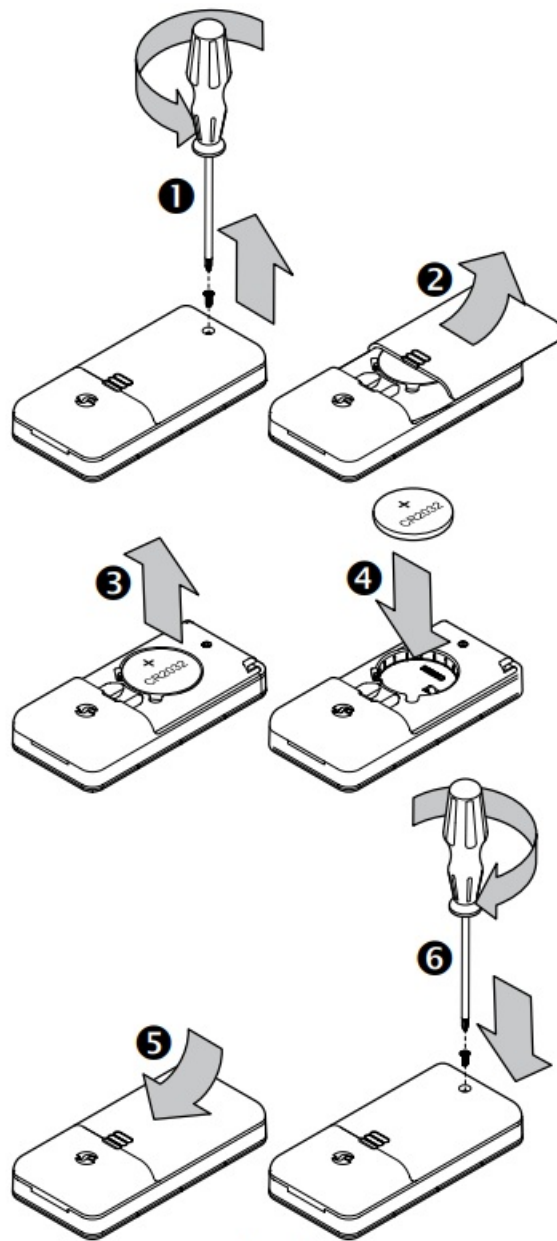
**Fig. 3**

1. Remove the protective backing from one side of the double-sided foam sticker as shown in Fig 3.
2. Press the sticker to the magnetic holder (Fig. 1G).
3. Remove the backing from the other side of the sticker.
4. Press the button holder with the attached sticker to a flat surface

### Using Shelly BLU RC Button 4 US

The Device comes ready to use with the battery installed. However, if pressing any of the buttons does not make the Device start transmitting signals, you might need to insert a new battery. For more details, see section Replacing the battery. Pressing a button causes the Device to transmit signals for one second in compliance with the BT Home format. Learn more at <https://bthome.io>. Shelly BLU RC Button 4 US supports multi-click, single, double, triple, and long-presses. The Device supports pressing several buttons simultaneously. It allows to control of several connected appliances at the same time. The LED indicator emits the same number of red flashes as button presses. To pair Shelly BLU RC Button 4 US with another Bluetooth device, press and hold any of the buttons for 10 sec. The blue LED flashes for the next minute indicating that the Device is in Pairing mode. The available Bluetooth characteristics are described in the official Shelly API documentation at <https://shelly.link/ble>. Shelly BLU RC Button 4 US features beacon mode. If enabled, the Device will emit beacons every 8 seconds. Shelly BLU RC Button US has an advanced security feature and supports encrypted mode. To restore the device configuration to factory settings, press and hold any of the buttons for 30 seconds shortly after inserting the battery

### Replacing the battery



**Fig. 4**

1. Remove the screw that secures the battery cover as shown in Fig 4.
2. Gently press and slide open the battery cover in the direction indicated by the arrow.
3. Remove the exhausted battery.
4. Insert a new battery. Make sure that the battery [ + ] sign aligns with the top of the battery compartment.
5. Slide the battery cover back into place until it clicks.
6. Fasten the screw to prevent accidental opening.

## Specifications

### Physical

- Size (HxWxD): Button: 65x30x13 mm / 2.56x1.18x0.51 in
- Magnetic holder (for wall switch boxes): 105x44x13 mm / 4.13x1.73x0.51 in
- Magnetic holder (for flat surfaces): 83x44x9 mm / 3.27x1.73x0.35 in
- Weight: 21 g / 0.74 oz
- Shell material: Plastic



- Shell color: White

## Environmental

- Ambient working temperature: -20°C to 40°C / -5°F to 105°F
- Humidity: 30% to 70% RH

## Electrical

- Power supply: 1x 3 V battery (included)
- Battery type: CR2032
- Estimated battery life: Up to 2 years

## Bluetooth

- Protocol: 4.2
- RF band: 2400-2483.5 MHz
- Max. RF power: < 4 dBm
- Range: Up to 30 m / 100 ft outdoors, up to 10 m / 33 ft indoors (depending on local conditions)
- Encryption: AES (CCM mode)

## Shelly Cloud inclusion

The Device can be monitored, controlled, and set up through our Shelly Cloud home automation service. You can use the service through either our Android, iOS, or Harmony OS mobile application or through any internet browser at <https://control.shelly.cloud/>. If you choose to use the Device with the application and Shelly Cloud service, you can find instructions on how to connect the Device to the Cloud and control it from the Shelly app in the application guide: <https://shelly.link/app-guide>. To use your BLU device with the Shelly Cloud service and Shelly Smart Control mobile app, your account must already have a Shelly BLU Gateway or any other Shelly device with Wi-Fi and Bluetooth capabilities (Gen2 or newer, different from sensors) and enabled Bluetooth gateway function. The Shelly mobile application and Shelly Cloud service are not conditions for the Device to function properly. This Device can be used standalone or with various other home automation platforms.

## Troubleshooting

In case you encounter problems with the installation or operation of the Device, check its knowledge base page: [https://shelly.link/blu\\_rc\\_button\\_4\\_US](https://shelly.link/blu_rc_button_4_US)

**Manufacturer:** Shelly Europe Ltd.

**Address:** 103 Cherni Vrah Blvd., 1407 Sofia, Bulgaria

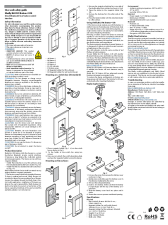
**Tel.:** +359 2 988 7435

**E-mail:** [support@shelly.cloud](mailto:support@shelly.cloud)

**Official website:** <https://www.shelly.com>

Changes in contact information are published by the Manufacturer on the official website. All rights to the trademark Shelly® and other intellectual rights associated with this Device belong to Shelly Europe Ltd.

## Documents / Resources



[Shelly RCB4 Smart Bluetooth Button](#) [pdf] User Guide  
RCB4 Smart Bluetooth Button, RCB4, Smart Bluetooth Button, Bluetooth Button, Button

## References

- [🌐 Shelly Control](#)
- [🔗 Shelly BLE devices](#)
- [User Manual](#)

### Manuals+, Privacy Policy

This website is an independent publication and is neither affiliated with nor endorsed by any of the trademark owners. The "Bluetooth®" word mark and logos are registered trademarks owned by Bluetooth SIG, Inc. The "Wi-Fi®" word mark and logos are registered trademarks owned by the Wi-Fi Alliance. Any use of these marks on this website does not imply any affiliation with or endorsement.