

Shelly[®]

Shelly INS932 Plus
Plug S Next-
Generation Wi-Fi
Device



Shelly INS932 Plus Plug S Next-Generation Wi-Fi Device User Guide

[Home](#) » [Shelly](#) » Shelly INS932 Plus Plug S Next-Generation Wi-Fi Device User Guide 

Contents

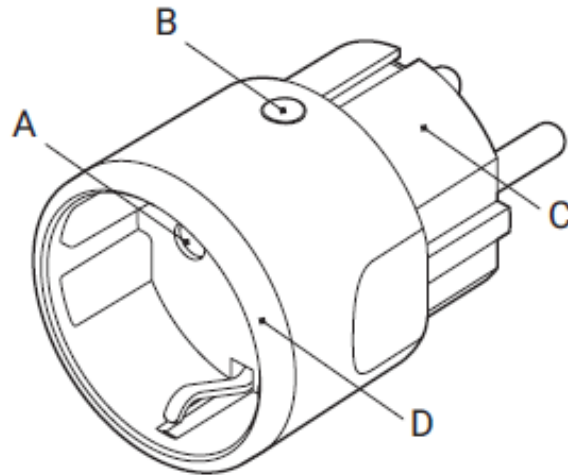
- [1 Shelly INS932 Plus Plug S Next-Generation Wi-Fi Device](#)
- [2 Legend](#)
- [3 Safety information](#)
- [4 Setting up the Device via Matter](#)
- [5 Specifications](#)
- [6 Documents / Resources](#)
 - [6.1 References](#)
- [7 Related Posts](#)

Shelly[®]

Shelly INS932 Plus Plug S Next-Generation Wi-Fi Device



Legend



- A: Socket
- B: Control button
- C: Plug
- D: LED indication ring

Smart Wi-Fi and Bluetooth plug

Referred to in this document as “the Device”



This sign indicates safety information.



This sign indicates an important note.

Safety information

For safe and proper use, read this guide, and any other documents accompanying this product. Keep them for future reference. Failure to follow the installation procedures can lead to malfunction, danger to health and life, violation of law, and/or refusal of legal and commercial guarantees (if any). Shelly Europe Ltd. is not responsible for any loss or damage in case of incorrect installation or improper operation of this device due to failure to follow the user and safety instructions in this guide.

WARNING! Do not use the Device to power or control the on/off status of life support equipment.

- Do not use the Device to operate equipment when inaccurate timing or accidental on/off commands could be dangerous. Examples of such equipment are saunas, sunlamps, electric blankets, etc.

CAUTION! Connect the Device only in the way shown in these instructions. Any other method could cause damage and/or injury.

- Connect the Device only to a power grid and appliances that comply with all applicable regulations. A short circuit in the power grid or any appliance connected to the Device can cause fire, property damage, and electric shock.
- The Device may be connected to and control only electric circuits and appliances that comply with the applicable standards and safety norms.
- Do not connect the Device to appliances that exceed the specified maximum electric load.

- Do not use the Device if it shows any sign of damage or defect.
- Immediately unplug the Device from the power outlet if it emits smoke, makes noise or has an unusual smell.
- Do not attempt to repair the Device yourself.
- The circuit on which the Device is operated must be secured by a cable protection switch in accordance with EN60898-1 (tripping characteristic B or C, max. 16 A rated current, min. 6 kA interrupting rating, energy limiting class 3).
- The Device is intended only for indoor use.
- Do not use the Device in a damp environment. Do not allow the device to get wet.
- Keep the Device away from dirt and moisture.
- Do not plug Devices into each other.
- Do not plug in any direct plug-in equipment in the Device.

Examples of direct plug-in equipment include plug-in transformers, battery rechargers, etc.

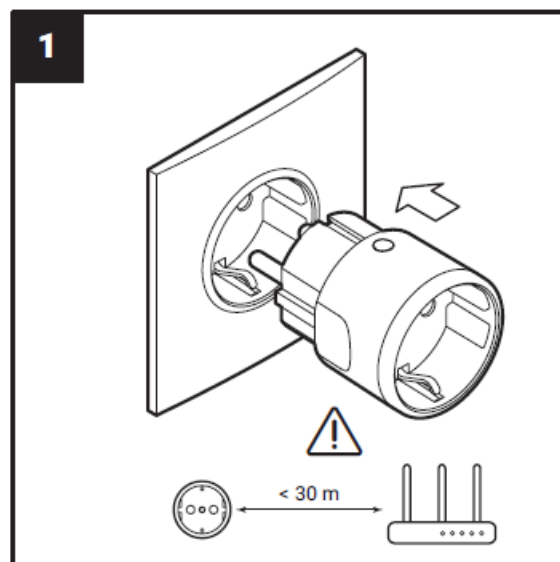
CAUTION! Do not operate covered.

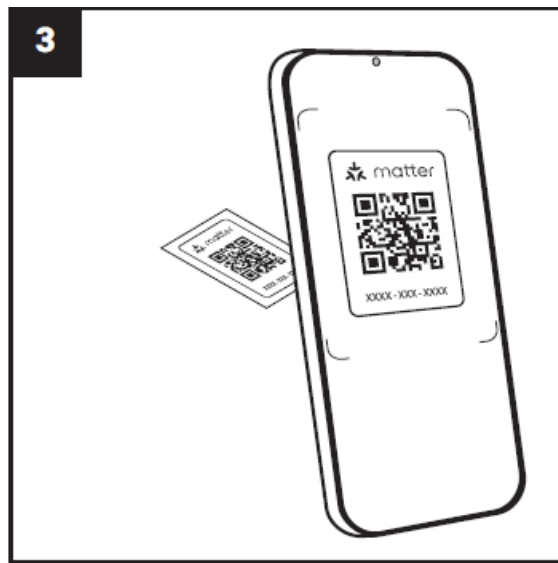
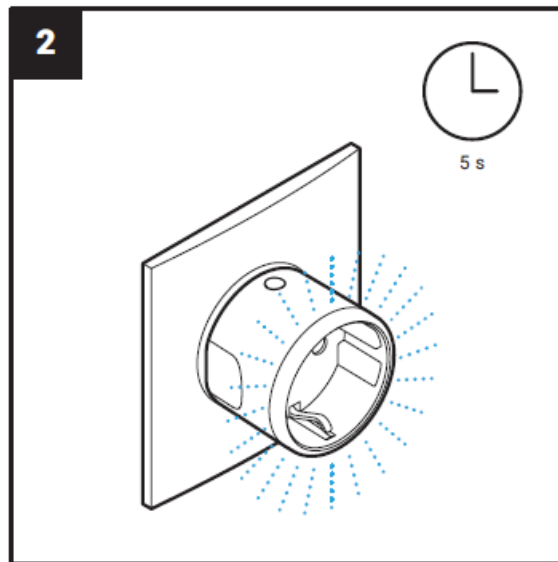
- Do not allow children to play with the buttons/switches connected to the Device. Keep the devices (mobile phones, tablets, PCs) for remote control of Shelly away from children.

Product description

Shelly Plug S MTR Gen3 is a Matter-compatible smart plug/outlet with power measurement, overvoltage, under voltage, and over heating protection. The Device allows remote control of electric appliances with various smart home platforms.

Setting up the Device via Matter





- Before you start, make sure you have:
 - 2.4 GHz Wi-Fi network
 - A Matter-compatible hub connected to the Internet
 - A mobile device with Bluetooth enabled and a Matter-compatible app installed
 - Keep the QR code for future reference. If you reset the device, you will need that code again.

Specifications

- Size (HxWxD): 44x44x70 mm / 1.73x1.73x2.75 in
- Compatible sockets: CEE 7/1, CEE 7/3 (Type F / Schuko) or CEE 7/5 (Type E)
- Compatible plugs: CEE 7/2, CEE 7/4 (Type F / Schuko), CEE 7/7, CEE 7/16 (Type C) or CEE 7/17
- Ambient working temperature: -20°C to 40°C / -5° F to 105°F
- Humidity: 30% to 70% RH
- Max. altitude: 2000 m / 6562 ft
- Pollution degree: 2
- Degree of protection: IP 20
- Power supply: 220 – 230 V~ 50/60 Hz
- Rated impulse-withstand voltage: 2500 V

- Max. switching voltage: 230 V~
- Max. switching current: 12 A
- Max. power: 2500 W (resistive)

Wi-Fi

- Protocol: 802.11 b/g/n
- RF band: 2401 – 2495 MHz
- Max. RF power: < 20 dBm
- Range: Up to 50 m / 164 ft outdoors, up to 30 m / 98 ft indoors (depending on local conditions)

Bluetooth

- Protocol: 4.2
- RF band: 2400 – 2483.5 MHz
- Max. RF power: < 4 dBm
- Range: Up to 30 m / 98 ft outdoors, up to 10 m / 33 ft indoors (depending on local conditions)

Disposal and recycling

This refers to the waste of electrical and electronic equipment. It is applicable in the EU, US and other countries to collect waste separately.



■ This symbol on the product or in the accompanying literature indicates that the product should not be disposed of in the daily – waste. Shelly® Plug S MTR Gen3 must be recycled to avoid possible damage to the environment or human health from uncontrolled waste disposal and to promote the reuse of materials and resources. It is your responsibility to dispose of the device separately from general household waste when it is already unusable.

Declaration of Conformity

Hereby, Shelly Europe Ltd. declares that the radio equipment type Shelly Plug S MTR Gen is in compliance with Directive 2014/53/EU, 2014/35/ EU, 2014/30/EU, 2011/65/EU. The full text of the EU declaration of conformity is available at the following internet address: https://shelly.link/plug_s_mtr_gen3_DoC

- Manufacturer: Shelly Europe Ltd
- Address: 103 Cherni Vrah Blvd., 1407 Sofia, Bulgaria
- Tel.: +359 2 988 7435
- E-mail: support@shelly.cloud
- Official website: <https://www.shelly.com>

Changes in contact information are published by the Manufacturer on the official website. All rights to the trademark Shelly® and other intellectual rights associated with this Device belong to Shelly Europe Ltd. For UP PSTI Act Statement of Compliance scan the QR code



https://shelly.link/plug_s_mtr_extended_UG

Documents / Resources



[Shelly INS932 Plus Plug S Next-Generation Wi-Fi Device](#) [pdf] User Guide
INS932 Plus Plug S Next-Generation Wi-Fi Device, INS932, Plus Plug S Next-Generation Wi-Fi Device, Next-Generation Wi-Fi Device, Wi-Fi Device, Device

References

- [User Manual](#)

[Manuals+](#), [Privacy Policy](#)

This website is an independent publication and is neither affiliated with nor endorsed by any of the trademark owners. The "Bluetooth®" word mark and logos are registered trademarks owned by Bluetooth SIG, Inc. The "Wi-Fi®" word mark and logos are registered trademarks owned by the Wi-Fi Alliance. Any use of these marks on this website does not imply any affiliation with or endorsement.