



Shelly BLURCBUTTON4U Smart Bluetooth Four Button Control User Guide

[Home](#) » [Shelly](#) » Shelly BLURCBUTTON4U Smart Bluetooth Four Button Control User Guide 

Shelly BLURCBUTTON4U Smart Bluetooth Four Button Control



Contents

- 1 Safety information
- 2 Product description
- 3 Mounting on a switch box (US standard)
- 4 Mounting on flat surfaces
- 5 Using Shelly BLU RC Button 4 US
- 6 Replacing the battery
- 7 Specifications
- 8 Shelly Cloud inclusion
- 9 Troubleshooting
- 10 FCC Notes
- 11 RF exposure statement
- 12 Customer Support
- 13 Documents / Resources
 - 13.1 References
- 14 Related Posts

Safety information

For safe and proper use, read this guide, and any other documents accompanying this product. Keep them for future reference. Failure to follow the installation procedures can lead to malfunction, danger to health and life, violation of law, and/or refusal of legal and commercial guarantees (if any). Shelly Europe Ltd. is not responsible for any loss or damage in case of incorrect installation or improper operation of this device due to failure to follow the user and safety instructions in this guide.


 This sign indicates safety information.


 This sign indicates an important note.


WARNING!











- **INGESTION HAZARD:** This product contains a button cell or coin battery.
- **DEATH** of serious injury can occur if ingested.
- A swallowed button cell or coin battery can cause Internal Chemical Burns in as little as 2 hours.
- **KEEP** new and used batteries **OUT OF REACH** of **CHILDREN**.
- Seek immediate medical attention if a battery is suspected to be swallowed or inserted inside any part of the body.



 **WARNING!** Even used batteries may cause severe injury or death. Call a local poison control center for treatment information!

 **WARNING!** Do not force discharge, recharge, disassemble, heat above manufacturer's specified temperature rating or incinerate! Doing so may result in injury due to venting, leakage or explosion resulting in chemical burns.

 **CAUTION!** Remove and immediately recycle or dispose of exhausted batteries according to your local regulations!

-  **CAUTION!** Do not dispose of batteries in household trash or incinerate! Batteries can emit hazardous compounds or cause fire if not disposed of properly.
-  **CAUTION!** If the Device is not used for an extended period, remove the battery. Reuse it if it still has power or dispose of it according to local regulations if it is exhausted.
-  **CAUTION!** Use only 3V CR2032 battery!
-  **CAUTION!** Ensure the batteries are installed correctly according to polarity (+ and -).
-  **CAUTION!** Always completely secure the battery compartment! If the battery compartment does not close securely, stop using the product, remove the batteries, and keep them away from children.
-  **WARNING!** Do not allow children to play with the magnets. Even relatively small magnets can cause serious injury if swallowed.
-  **CAUTION!** Keep the Device away from liquids and moisture. The Device shouldn't be used in places with high humidity.
-  **CAUTION!** Do not use it if the Device has been damaged!
-  **CAUTION!** Do not attempt to service or repair the Device yourself.
-  **CAUTION!** The Device may be connected wirelessly and may control electric circuits and appliances. Proceed with caution! Irresponsible use of the Device may lead to malfunction, danger to your life or violation of the law.

Product description

Shelly BLU RC Button 4 US (the Device) is a smart four-button Bluetooth remote control interface. It features a long battery life, multi-click control, and strong encryption. The Device comes with two magnetic holders:

- Holder that attaches to any flat surfaces using the included double-sided foam sticker (**Fig. 1G**).
- Holder that fits into standard US wall switch boxes (**Fig. 1H**).

Both holders and the Device itself can attach to any surface that has magnetic properties.

 The Device comes with factory-installed firmware.

To keep it updated and secure, Shelly Europe Ltd.

provides the latest firmware updates free of charge.

Access the updates through the Shelly Smart Control mobile application. Installation of firmware updates is the user's responsibility. Shelly Europe Ltd.

shall not be liable for any lack of conformity of the Device caused by the failure of the user to install the available updates in a timely manner.

- **A:** Button 1
- **B:** Button 2
- **C:** Button 3
- **D:** Button 4
- **E:** LED indicator
- **F:** Battery cover
- **G:** Magnetic holder (for flat surfaces)
- **H:** Magnetic holder (for wall switch boxes)

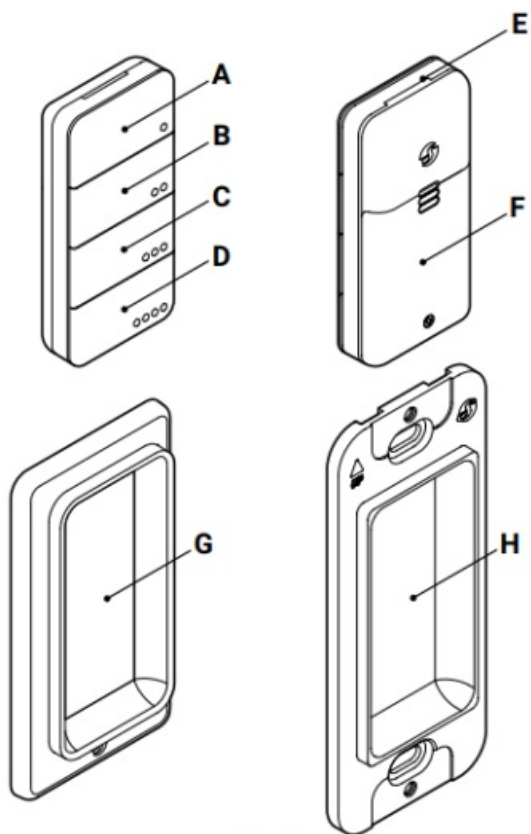


Fig. 1

Mounting on a switch box (US standard)

1. Place magnetic holder (**Fig. 1 H**) on the switch box as shown in **Fig. 2**.
2. Fix the holder to the switch box using two screws.
3. Now you can attach the switch decorative plate and use the magnetic holder to store the device.

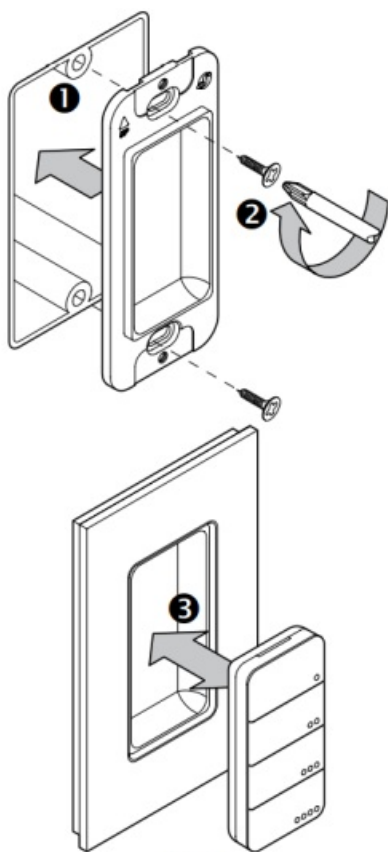


Fig. 2

Mounting on flat surfaces

1. Remove the protective backing from one side of the double-sided foam sticker as shown in **Fig 3**.
2. Press the sticker to the magnetic holder (**Fig. 1G**).
3. Remove the backing from the other side of the sticker.
4. Press the button holder with the attached sticker to a flat surface.

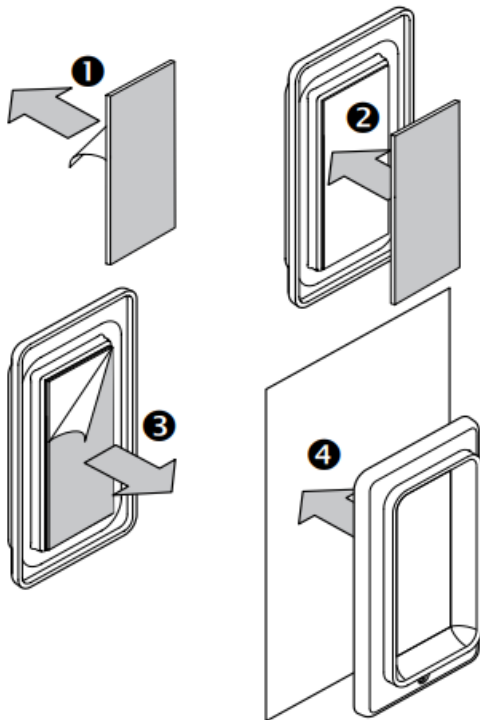



Fig. 3

Using Shelly BLU RC Button 4 US

 The Device comes ready to use with the battery installed. However, if pressing any of the buttons does not make the Device start transmitting signals, you might need to insert a new battery. For more details, see section Replacing the battery.

Pressing a button causes the Device to transmit signals for one second in compliance with the BT Home format. Learn more at <https://bthome.io>.

Shelly BLU RC Button 4 US supports multi-click, single, double, triple, and long-presses.

The Device supports pressing of several buttons simultaneously. It allows to control several connected appliances at the same time.

The LED indicator emits the same number of red flashes as button presses.

To pair Shelly BLU RC Button 4 US with another Bluetooth device, press and hold any of the buttons for 10 sec.

The blue LED flashes for the next minute indicating that the Device is in Pairing mode. The available Bluetooth characteristics are described in the official Shelly API documentation at <https://shelly.link/ble>.

Shelly BLU RC Button 4 US features beacon mode.

If enabled, the Device will emit beacons every 8 seconds.

Shelly BLU RC Button US has advanced security feature and supports encrypted mode.

To restore the device configuration to factory settings, press and hold any of the buttons for 30 seconds shortly after inserting the battery.

Replacing the battery

1. Remove the screw that secures the battery cover as shown in **Fig 4**.
2. Gently press and slide open the battery cover in the direction indicated by the arrow.
3. Remove the exhausted battery.

4. Insert a new battery. Make sure that the battery [+] sign aligns with the top of the battery compartment.
5. Slide the battery cover back into place until it clicks.
6. Fasten the screw to prevent accidental opening.

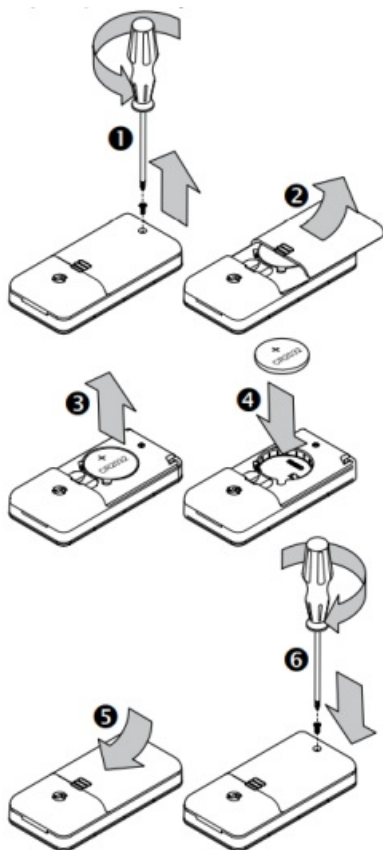


Fig. 4

Specifications

Physical

- **Size (HxWxD):** Button: 65x30x13 mm / 2.56×1.18×0.51 in
- **Magnetic holder (for wall switch boxes):** 105x44x13 mm / 4.13×1.73×0.51 in
- **Magnetic holder (for flat surfaces):** 83x44x9 mm / 3.27×1.73×0.35 in
- **Weight:** 21 g / 0.74 oz
- **Shell material:** Plastic
- **Shell color:** White

Environmental

- **Ambient working temperature:** -20°C to 40°C / -5°F to 105°F
- **Humidity:** 30% to 70% RH

Electrical

- **Power supply:** 1x 3 V battery (included)
- **Battery type:** CR2032
- **Estimated battery life:** Up to 2 years

Bluetooth

- **Protocol:** 4.2
- **RF band:** 2400-2483.5 MHz
- **Max. RF power:** < 4 dBm
- **Range:** Up to 30 m / 100 ft outdoors, up to 10 m / 33 ft indoors (depending on local conditions)
- **Encryption:** AES (CCM mode)

Shelly Cloud inclusion

The Device can be monitored, controlled, and set up through our Shelly Cloud home automation service. You can use the service through either our Android, iOS, or Harmony OS mobile application or through any internet browser at <https://control.shelly.cloud/>.

If you choose to use the Device with the application and Shelly Cloud service, you can find instructions on how to connect the Device to the Cloud and control it from the Shelly app in the application guide:

<https://shelly.link/app-guide>.

To use your BLU device with the Shelly Cloud service and Shelly Smart Control mobile app, your account must already have a Shelly BLU Gateway or any other Shelly device with Wi-Fi and Bluetooth capabilities (Gen2 or newer, different from sensors) and enabled Bluetooth gateway function.

The Shelly mobile application and Shelly Cloud service are not conditions for the Device to function properly. This Device can be used stand alone or with various other home automation platforms.

Troubleshooting

In case you encounter problems with the installation or operation of the Device, check its knowledge base page:

https://shelly.link/blu_rc_button_4_US

FCC Notes

This device complies with Part 15 of the FCC Rules. Operation is subject to the following two conditions:

1. this device may not cause harmful interference, and
2. this device must accept any interference received, including interference that may cause undesired operation.

The manufacturer is not responsible for any radio or TV interference caused by unauthorized modification or change to this equipment. Such modifications or change could void the user's authority to operate the equipment. This equipment has been tested and found to comply with the limits for a Class B digital device, pursuant to part 15 of the FCC Rules. These limits are designed to provide reasonable protection against harmful interference in a residential installation. This equipment generates, uses and can radiate radio frequency energy and, if not installed and used in accordance with the instructions, may cause harmful interference to radio communications. However, there is no guarantee that interference will not occur in a particular installation.

If this equipment does cause harmful interference to radio or television reception, which can be determined by turning the equipment off and on, the user is encouraged to try to correct the interference by one or more of the following measures:

- Reorient or relocate the receiving antenna.
- Increase the separation between the equipment and receiver.
- Connect the equipment into an outlet on a circuit different from that to which the receiver is connected.
- Consult the dealer or an experienced radio/TV technician for help.

RF exposure statement

This equipment complies with FCC radiation exposure limits set forth for an uncontrolled environment. The device has been evaluated to meet general RF exposure requirement. The device can be used in portable exposure condition without restriction.

Customer Support

Manufacturer: Shelly Europe Ltd.

Address: 103 Cherni Vrah Blvd., 1407 Sofia, Bulgaria

Tel.: +359 2 988 7435

E-mail: support@shelly.cloud

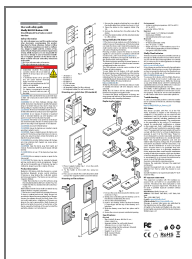
Official website: <https://www.shelly.com>

Changes in contact information are published by the Manufacturer on the official website.

All rights to the trademark Shelly® and other intellectual rights associated with this Device belong to Shelly Europe Ltd.



Documents / Resources



[Shelly BLURCBUTTON4U Smart Bluetooth Four Button Control](#) [pdf] User Guide
2BDC6-BLURCBUTTON4U, 2BDC6BLURCBUTTON4U, BLURCBUTTON4U Smart Bluetooth Four Button Control, BLURCBUTTON4U, Smart Bluetooth Four Button Control, Bluetooth Four Button Control, Four Button Control, Control

References

- [Shelly Control](#)
- [Shelly Smart Control guide](#)
- [Shelly BLE devices](#)
- [User Manual](#)

Manuals+ Privacy Policy

This website is an independent publication and is neither affiliated with nor endorsed by any of the trademark owners. The "Bluetooth®" word mark and logos are registered trademarks owned by Bluetooth SIG, Inc. The "Wi-Fi®" word mark and logos are registered trademarks owned by the Wi-Fi Alliance. Any use of these marks on this website does not imply any affiliation with or endorsement.