

Shelly
**BLU HandT Smart
Bluetooth Humidity
and Temperature
Sensor**



Shelly BLU HandT Smart Bluetooth Humidity and Temperature Sensor User Guide

[Home](#) » [Shelly](#) » Shelly BLU HandT Smart Bluetooth Humidity and Temperature Sensor User Guide 

Contents

- [1 Shelly BLU HandT Smart Bluetooth Humidity and Temperature Sensor](#)
- [2 Safety information](#)
- [3 Product Description](#)
- [4 Using Shelly BLU H&T](#)
- [5 Replacing the battery](#)
- [6 Mounting](#)
- [7 Specifications](#)
- [8 Shelly Cloud inclusion](#)
- [9 Troubleshooting](#)
- [10 CONTACT](#)
- [11 FAQ](#)
- [12 Documents / Resources](#)
 - [12.1 References](#)
- [13 Related Posts](#)



Shelly®

Shelly BLU HandT Smart Bluetooth Humidity and Temperature Sensor



Safety information

For safe and proper use, read this guide, and any other document accompanying this product. Keep them for future reference. Failure to follow the installation procedures can lead to malfunction, danger to health and life, violation of law, and/or refusal of legal and commercial guarantees (if any). Shelly Europe Ltd. is not responsible for any loss or damage in case of incorrect installation or improper operation of this device due to failure to follow the user and safety instructions in this guide.

-  This sign indicates safety information
-  This sign indicates an important note.

CAUTION

Do not use the Device if it shows any sign of damage or defect.

- **CAUTION!** Do not attempt to repair the Device yourself.
- **CAUTION!** Use the Device only with batteries that comply with all applicable regulations. Using inappropriate batteries can cause damage to the Device and fire.
- **CAUTION!** Make sure the batteries' + and – signs correspond to the marks on the Device battery compartment.
- **WARNING!** Keep your battery-powered device away from children. Swallowing batteries can cause serious injury or death.
- **CAUTION!** Batteries can emit hazardous compounds or cause fire if not disposed of properly. Take the exhausted battery to your local recycling point.

Product Description

Shelly BLU H&T (the Device) is a smart Bluetooth humidity and temperature sensor featuring long battery life.

The Device comes with factory-installed firmware. To keep it updated and secure, Shelly Europe Ltd. provides the latest firmware updates free of charge. Access the updates through the Shelly Smart Control mobile application. Installation of firmware updates is the user's responsibility. Shelly Europe Ltd. shall not be liable for any lack of conformity of the Device caused by the failure of the user to install the available updates in a timely manner.

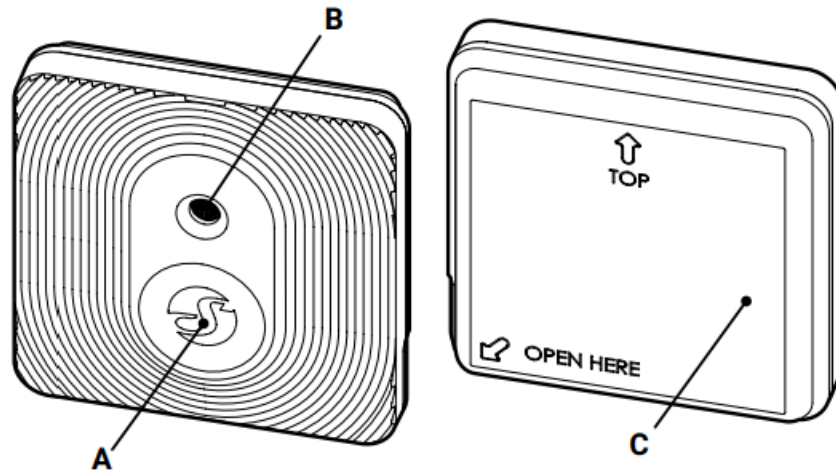


Fig. 1

A: Control button

- B: Waterproof sensor opening
- C: Back cover

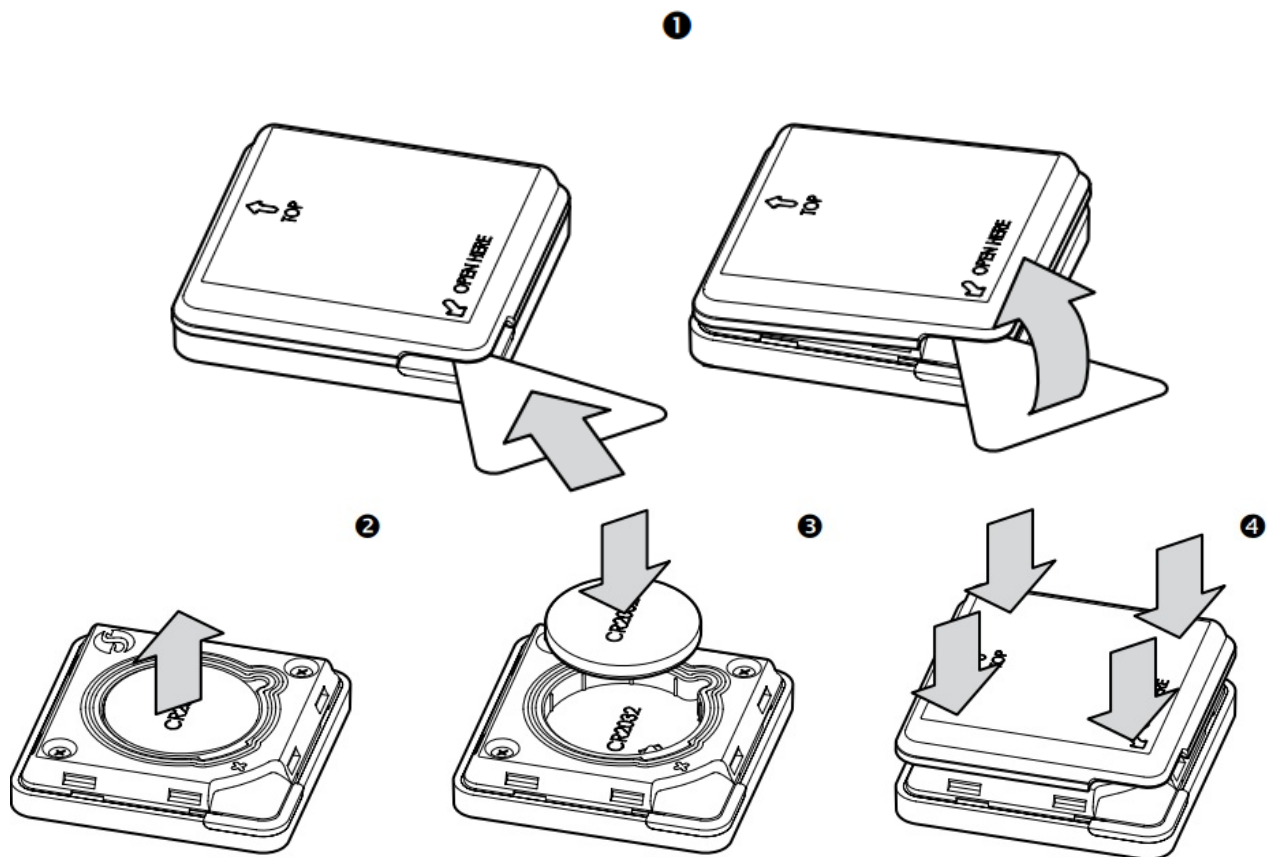
Using Shelly BLU H&T

The Device comes ready to use with the battery installed. However, if pressing the control button does not make the Device start emitting signals, you might need to insert a new battery. For more details, see section Replacing the battery. While powered the Device will broadcast every 11 seconds single data packets containing its battery status in percent, the currently measured ambient temperature in °C and relative humidity in percent.

Every 6 hours the Device will broadcast multiple data packets for a period of one second. If you press the control button the Device will immediately start broadcasting for a second the currently measured ambient temperature in °C and relative humidity in percent, as well as a button-pressed event. To pair Shelly BLU H&T with another Bluetooth device press and hold the control button for 10 sec. The Device will await connection for the next minute. The available Bluetooth characteristics are described in the official Shelly API documentation at <https://shelly.link/ble> To restore the device configuration to factory settings, press and hold the control button for 30 seconds shortly after inserting the battery.

Replacing the battery

1. Open gently the back cover using a plastic opening pick (or a credit card) as shown in Fig. 1.
2. Remove the exhausted battery.
3. Insert a new battery.
4. Replace the back cover by pressing it against the main body of the Device at the four angles until you hear a clicking sound as shown in Fig. 2.



Mounting

You can place the Device on any horizontal surface with the sensor opening pointing up, or the supplied double-sided foam stickers to affix it to a vertical or sloped surface. Make sure that nothing blocks the air circulation around the sensor opening.

Specifications

- Size (HxWxD): 37x37x10 mm / 1.46x1.46x0.39 in
- Weight: 13 g / 0.44 oz
- Mounting: On a flat surface
- Shell material: Plastic
- Shell color:
 - Black
 - Mocha
 - Ivory
- Ambient working temperature: -20 °C to 60 °C /
 - 5 °F to 140 °F
- Humidity: 0% to 100% RH
- Power supply: 1x 3 V battery (included)
- Battery type: CR2032
- Estimated battery life: 3 years
- Bluetooth protocol: 4.2
- RF band: 2400 – 2483.5 MHz
- Max. RF power: < 4 dBm

- Range: Up to 30 m / 100 ft outdoors, up to 10 m / 33 ft indoors (depending on local conditions)
- Encryption: AES (CCM mode)

Shelly Cloud inclusion

The Device can be monitored, controlled, and set up through our Shelly Cloud home automation service. You can use the service through either our Android, iOS, or Harmony OS mobile application or through any internet browser at <https://control.shelly.cloud/>.

If you choose to use the Device with the application and Shelly Cloud service, you can find instructions on how to connect the Device to the Cloud and control it from the Shelly app in the application guide:

<https://shelly.link/app-guide>. The Shelly mobile application and Shelly Cloud service are not conditions for the Device to function properly. This Device can be used standalone or with various other home automation platforms that support BTHome protocol. For more information visit <http://bthome.io>

Troubleshooting

In case you encounter problems with the installation or operation of the Device, check its knowledge base page: https://shelly.link/blu_ht_KB

Declaration of conformity

Hereby, Shelly Europe Ltd. (former Allterco Robotics EOOD) declares that the radio equipment type Shelly BLU H&T is in compliance with Directive 2014/53/EU, 2014/35/ EU, 2014/30/EU, 2011/65/EU. The full text of the EU Declaration of Conformity is available at the following internet address: https://shelly.link/blu_ht_DoC

CONTACT

- Manufacturer: Shelly Europe Ltd.
- Address: 103 Cherni Vrah Blvd., 1407 Sofia, Bulgaria
- Tel.: +359 2 988 7435
- Official website: <https://www.shelly.com>

Changes in contact information are published by the Manufacturer on the official website. All rights to the trademark Shelly® and other intellectual rights associated with this Device belong to Shelly Europe Ltd.

FAQ

- **Q:** Can I use rechargeable batteries with Shelly BLU H&T?
- **A:** It is recommended to use batteries that comply with all applicable regulations. Rechargeable batteries may not provide optimal performance.
- **Q:** How often should I replace the battery?
- **A:** The frequency of battery replacement depends on usage. Replace the battery when it is exhausted to ensure continuous operation.
- **Q:** Can I use the Shelly BLU H&T outdoors?
- **A:** The device is designed for indoor use. Using it outdoors may expose it to conditions beyond its specifications.

Documents / Resources



[Shelly BLU HandT Smart Bluetooth Humidity and Temperature Sensor](#) [pdf] User Guide 3308345, 3308347, BLU HandT Smart Bluetooth Humidity and Temperature Sensor, BLU Hand T, Smart Bluetooth Humidity and Temperature Sensor, Bluetooth Humidity and Temperature Sensor, Humidity and Temperature Sensor, Temperature Sensor, Sensor

References

- [🌐 Shelly Control](#)
- [🔗 Shelly Smart Control Guide](#)
- [🔗 Shelly BLE devices](#)
- [User Manual](#)

[Manuals+.](#) [Privacy Policy](#)

This website is an independent publication and is neither affiliated with nor endorsed by any of the trademark owners. The "Bluetooth®" word mark and logos are registered trademarks owned by Bluetooth SIG, Inc. The "Wi-Fi®" word mark and logos are registered trademarks owned by the Wi-Fi Alliance. Any use of these marks on this website does not imply any affiliation with or endorsement.